

Billet Upper Dogbone Insert, MKV/MKVI VOLKSWAGEN
GOLF/JETTA/GTI/GLI & 8J/8P AUDI TT/A3



Lower Dogbone
Mount Insert
Spacer

Upper Dogbone
Mount Insert

034Motorsport's Billet Upper Dogbone Mount Insert for MKV/MKVI VOLKSWAGEN GOLF/GTI/R/JETTA/GLI AND 8P AUDI A3/S3 & 8J AUDI TT/TTS/TTRS is the new standard in performance and durability. This dogbone insert was engineered with performance in mind, manufactured from billet aluminum to maintain proper articulation and provide longevity.

Installation Spiciness Rating



(Mild)

Installation of your 034Motorsport Billet Upper Dogbone Mount Insert is a straightforward process that will take approximately 1 hour to complete.

Required Parts

- **034Motorsport Billet Aluminum Dogbone Mount Lower Insert (Part number 034-509-1021 or equivalent) is required for this installation.**

Supplied Parts:

- 034Motorsport Billet Upper Dogbone Mount Insert
- 034Motorsport Lower Dogbone Mount Spacer

Tools Needed:

- Ratchet, Torque Wrench, Screwdriver
- Sockets – 16mm, 21mm
- Thumbs

About This Guide

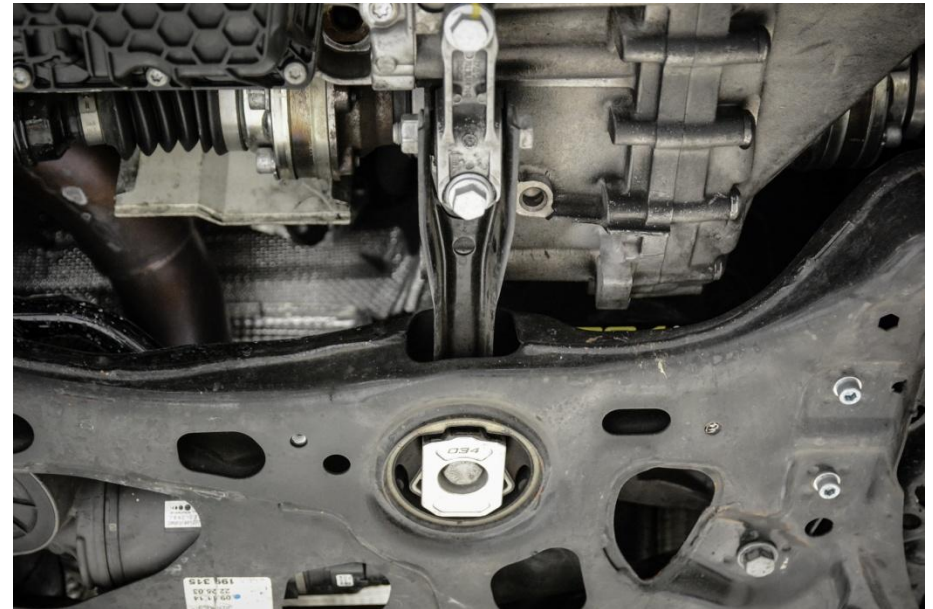
This Install Guide documents the installation process on a 2016 Audi S3, and for the upper insert portion, a 2018 TTRS. The actual installation process for your vehicle may vary by model, due to factory options, or because of existing aftermarket modifications you have installed.

Getting Started

- Ensure you have all parts and tools required for installation by reading the complete Install Guide.
- Raise your vehicle securely using a lift or safely raise your vehicle with a jack and support with jack-stands.

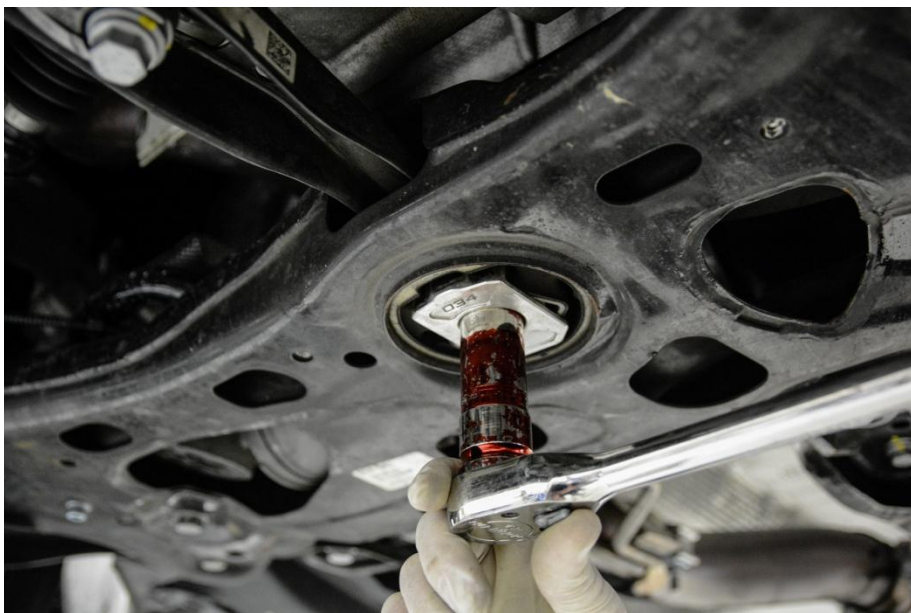
Step 1

Locate the factory dogbone mount securing the engine/transmission to the front subframe.



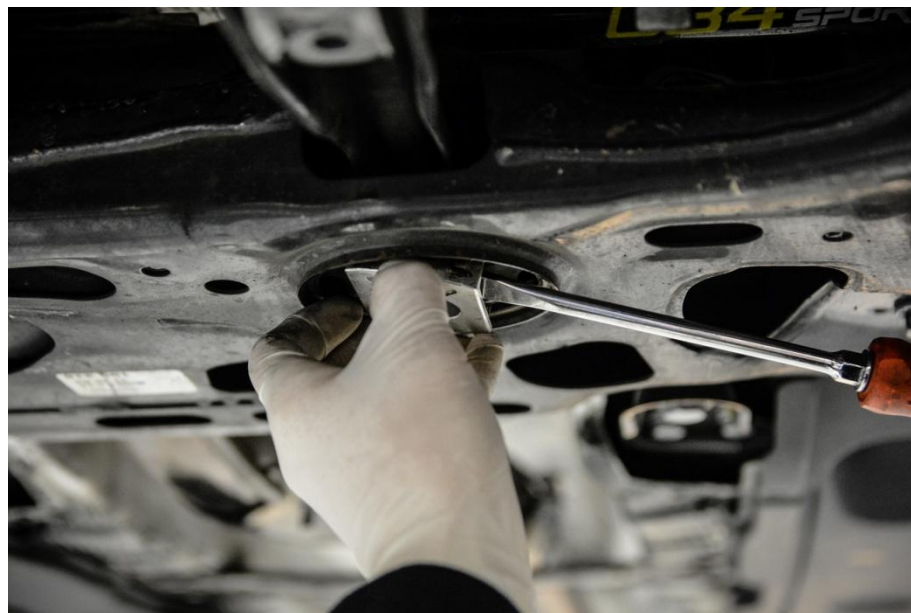
Step 2

Using a 21mm socket, remove the bolt securing the factory dogbone mount to the front subframe.



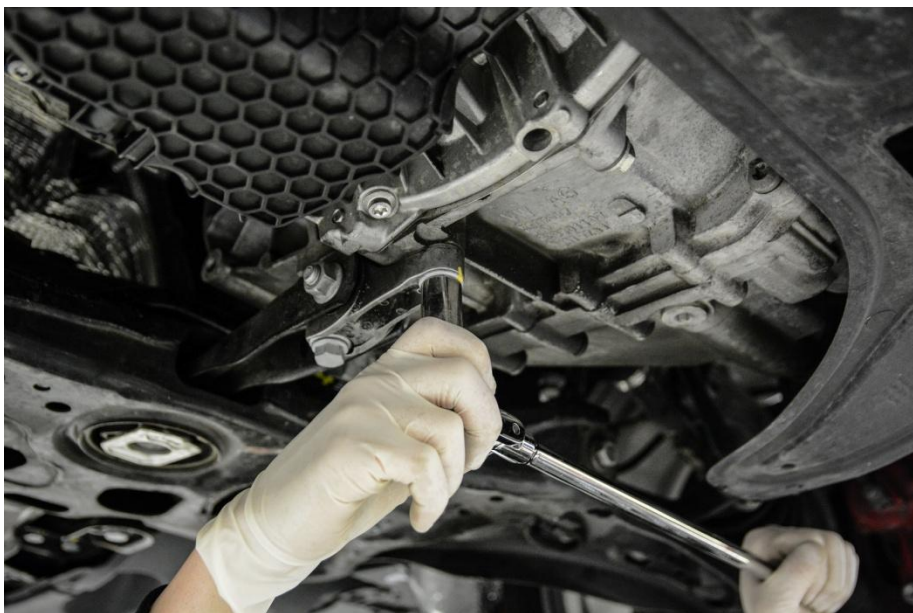
Step 3 (Optional)

Using a flathead screwdriver, remove the dogbone mount insert if one has been installed previously. The lower dogbone mount insert is required with this product.



Step 4

Using a 16mm socket, remove the two bolts securing the factory dogbone mount to the transmission.



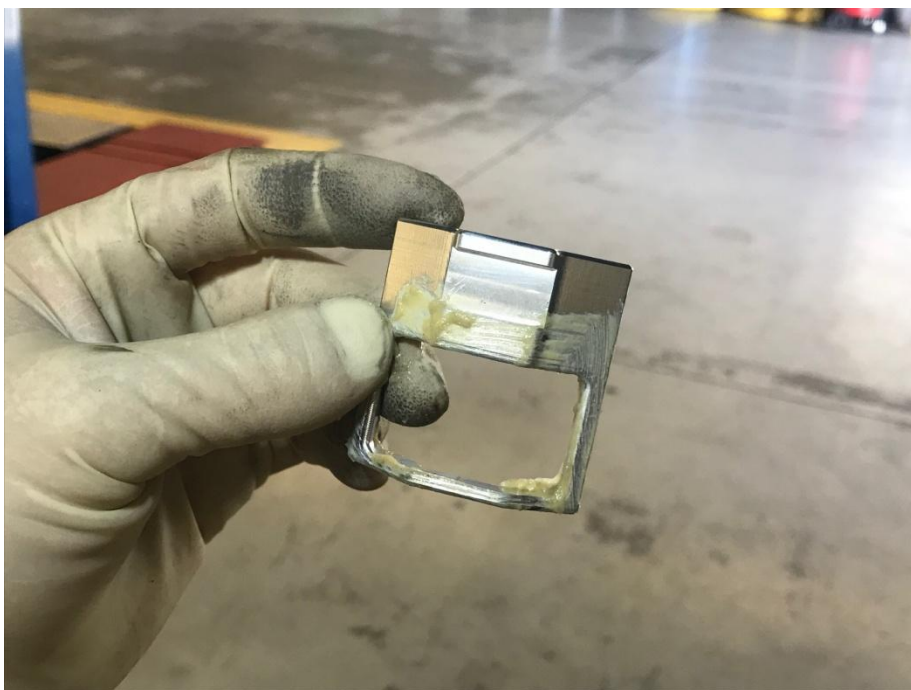
Step 5

Remove the factory dogbone mount from the vehicle by sliding forward and out of the front subframe.



Step 6

Apply a light coating of grease on the 034-509-1040 Upper Dogbone Mount Insert.



Step 7

Orientate the insert this way.



Step 8

Press insert straight up into mount, in the front void space.



Step 9

Press insert fully into mount.



Step 10

Using your thumb, press insert up into upper portion of the mount.



Step 11

Correctly seated upper insert should look like this.



Note: steps 12-17 show the 034Motorsport Billet + Spherical Dogbone Mount being installed. If you are reinstalling the stock dogbone, it will be the same steps.

Step 12

Apply a coat of grease to the tail end of the 034Motorsport Billet + Spherical Dogbone Mount to ease installation into the rubber bushing.



Step 13

Insert the tail end of the 034Motorsport Billet + Spherical Dogbone Mount into the front subframe and align front holes with those on the transmission.



Step 14

Loosely install the front two bolts securing the 034Motorsport Billet + Spherical Dogbone Mount to the transmission using the new supplied factory bolts.



Step 15

Place the Lower Dogbone Mount Spacer (that came with your new Upper Dogbone Mount Insert) inside the Lower Dogbone Mount Insert oriented correctly. Install Lower Dogbone Mount Insert and Lower Dogbone Mount Insert Spacer together. Use a spare hand to move engine/transmission and align bolt hole in the front subframe with the 034Motorsport Billet + Spherical Dogbone Mount. Loosely install the new factory bolt supplied in the kit.



Step 16

Using a 16mm socket, torque the 2 new factory bolts securing the 034Motorsport Billet + Spherical Dogbone Mount to the engine/transmission to 50 Nm + 90 degrees.



Step 17

Using a 21mm socket, torque the new factory bolt securing the 034Motorsport Billet + Spherical Dogbone Mount to the front subframe to 130 Nm + 90 Degrees.



Step 18

Ensure all bolts are secure, and lower your.

Step 19

Enjoy the Upgrade!