



[MQB Front Subframe Locking Collar Upgrade Kit, 8V/8S Audi A3/S3 & TT/TTS, Stainless Steel](#)



**Supplied Parts:**

- 034Motorsport Stainless Steel Upper Front Subframe Locking Collars (Set of 2) – **601-0029**
- 034Motorsport Stainless Steel Upper Rear Subframe Locking Collars (Set of 2) – **601-0026**
- 034Motorsport Stainless Steel Lower Subframe Locking Collars (Set of 4) – **601-0027**
- Subframe Bracket Spacing Washers (Set of 4)
- Factory Replacement Subframe Bolts (Set of 4)

**Tools Needed:**

- Hands (2) (*Opposable thumbs are required!*)
- 18mm Socket
- 16mm Socket
- 13mm Socket
- Extension
- Torque Wrench
- Transmission Jack or Similar to Support Subframe

Installation of this upgrade is a straightforward process that will take approximately 90 minutes to complete.

**Important:** Install the 034Motorsport Subframe Locking Collars into the correct location on the subframe! There are 3 unique versions – four 601-0027 for the lower holes on the subframe, two 601-0026 for the rear upper holes on the subframe, and two 601-0029 for the front upper holes on the subframe.

**Step 1** – Raise the vehicle securely on jackstands or a lift, in order to gain access to the front subframe. The bolts that are removed for installation are marked below. **Support the subframe.**



**Step 2** - Using a 16mm Socket, remove the two bolts securing the dogbone mount to the transmission.





**Step 3** – Using a 16mm Socket & 18mm Socket, remove the bolts securing the steel subframe brackets to the subframe and body. Set the brackets and smaller bolts aside.



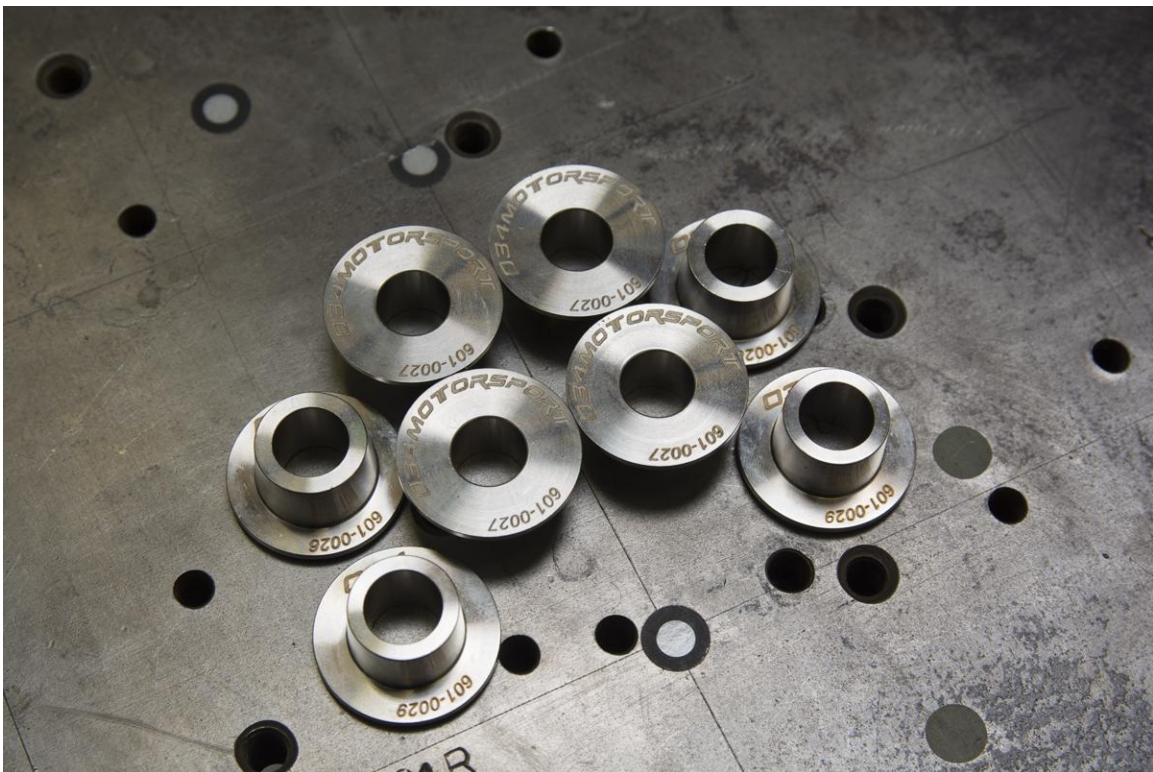
**Step 4** –Using a 13mm socket, remove the bolts securing the exhaust hanger to the subframe.



**Step 5** –Using an 18mm Socket and extension, remove the front subframe bolts.



**Step 6** –Gather the Subframe Locking Collars. The 601-0026 are rear uppers, the 601- 0029 is front uppers, and the 601- 0027 are the four lowers. They must be installed in the correct locations!





**Step 7** – Lower the subframe to allow for space to install the Locking Collars. Remove the steel shims from the top of the rear subframe holes, as pictured below.



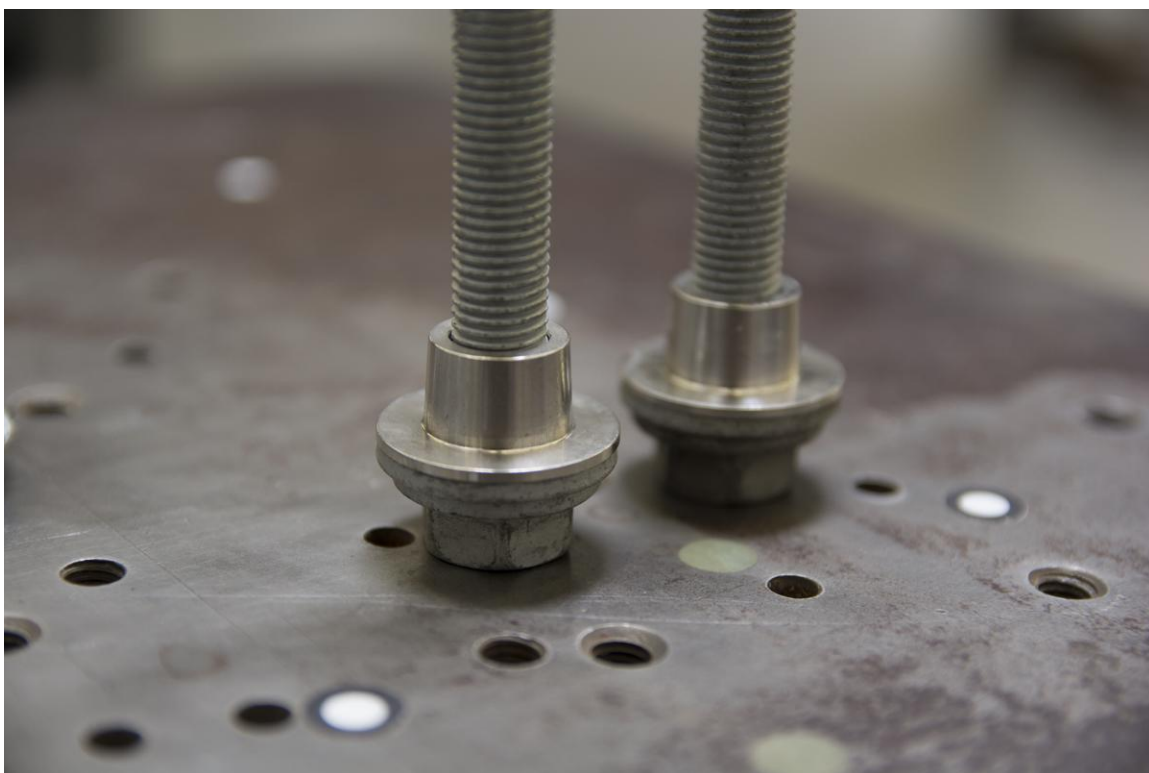
**Step 8** – Install the two 601-0026 Locking Collars into the tops of the rear subframe holes, as pictured below.



**Step 9** – Install the two 601-0029 Locking Collars into the tops of the front subframe holes, as pictured below.



**Step 10** – Preinstall two of the 601-0027 Locking Collars onto the supplied new Factory Subframe Bolts, as pictured below.



**Step 11** – Raise the subframe, and patiently install the new Factory Subframe Bolts with 601-0027 Locking Collars as pictured below. Take care to ensure that all four subframe holes are aligned, with the locking collars properly seated at the body. Do not fully torque these bolts yet!



**Step 12** – Preinstall two of the 601-0027 Locking Collars onto the Steel Subframe Brackets and insert the supplied Factory Subframe Bolts, as pictured below.





**Step 13** –Reinstall the Steel Subframe Brackets and loosely thread in the Factory Subframe Bolts, ensuring that the Locking Collars seat properly.

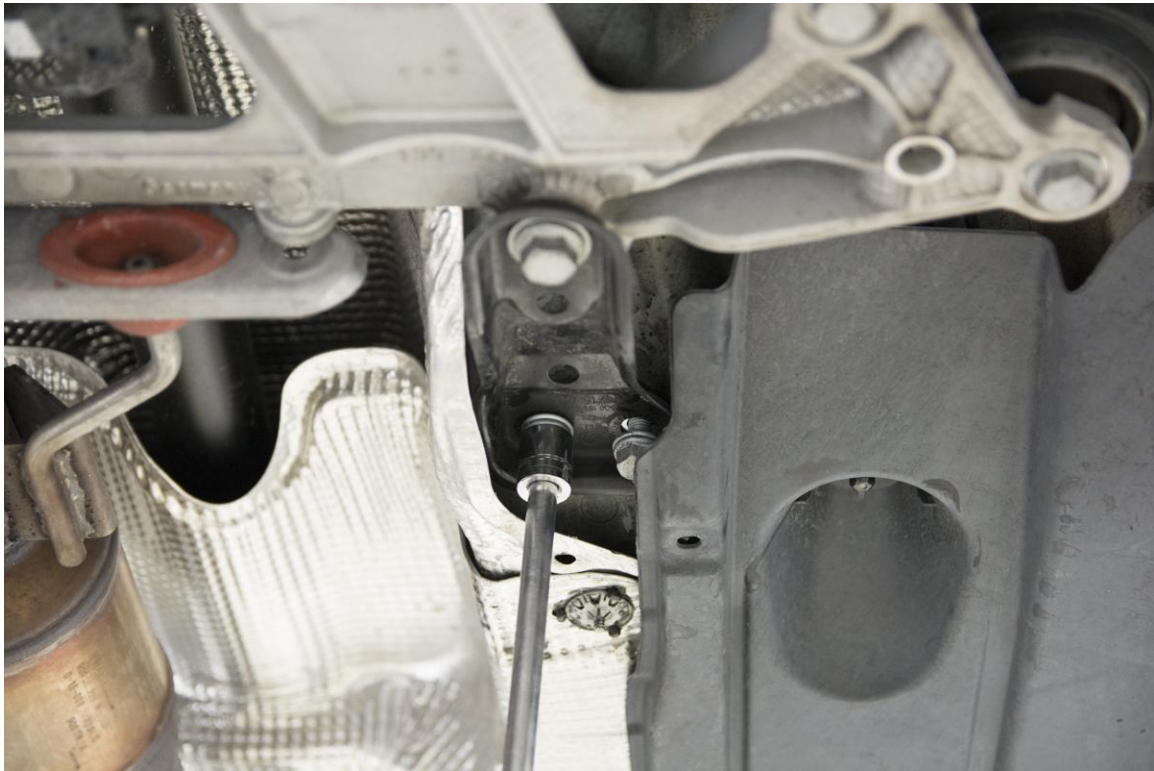


**Step 14** –Slip in spacing washers between the Steel Subframe Bracket and Body at the two rear holes, as shown below.





**Step 15** –With the spacing washers installed, reinstall the factory bolts removed in Step 3. Torque to 45 Nm with blue loctite.



**Step 16** – Reinstall the two bolts securing the dogbone mount to the transmission. Torque to 50 Nm with blue loctite.



**Step 17** – Reinstall the bolts securing the factory exhaust hanger to the subframe. Torque to 20 Nm.

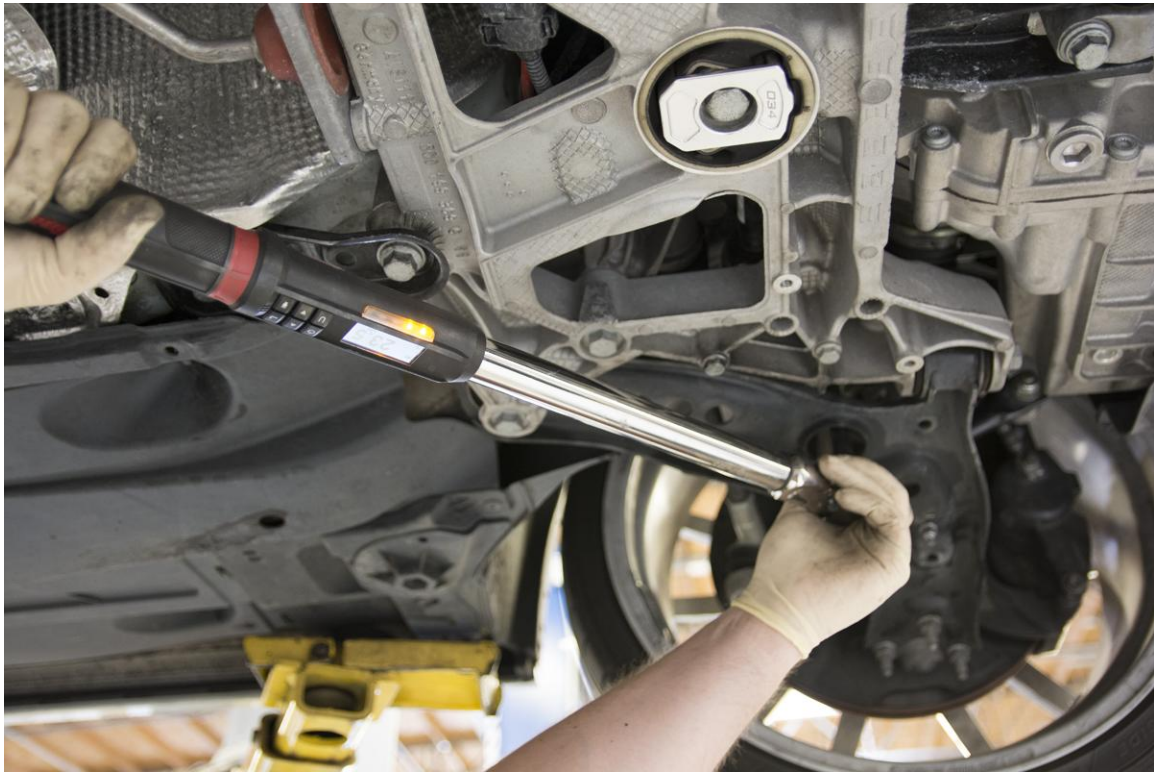


**Step 18** – Verify that the subframe is properly aligned and all Locking Collars are fully seated. Torque the new Factory Subframe Bolts to 70 Nm + 180 Degrees.





**Step 19** – Verify that the subframe is properly aligned and all Locking Collars are fully seated. Torque the new Factory Subframe Bolts to 70 Nm + 180 Degrees.



**Step 20** – Verify that all bolts have been torqued to spec and that the subframe is properly aligned with all Locking Collars fully seated. **Perform an alignment!**