

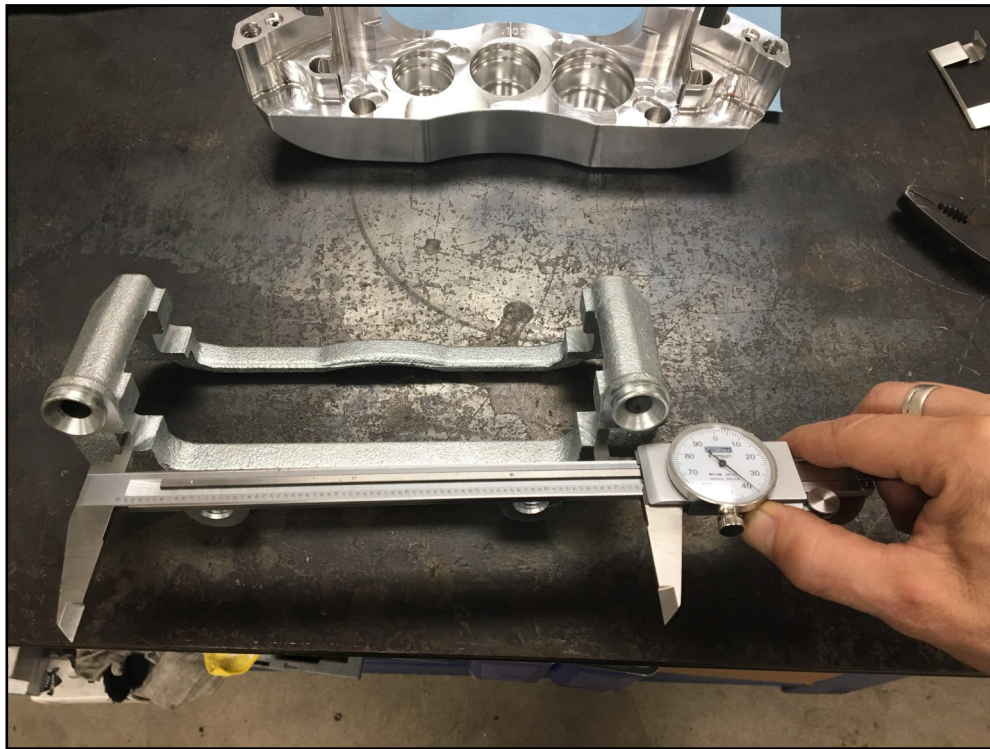
**Technical Investigation:** 6P & T4 abutment check with aftermarket D0731 pads.

11 June 2019

**Issue:** A recent customer complained about pad 'clicking' noise.

**Findings:** Our abutments are modeled after the C5/C6 abutments and our caliper (abutment area) is modeled after the C5/C6 anchor (abutment area). Upon inspection I found our caliper opening to actually be .015" narrower.

- Both our abutment and the factory C5/6 abutments measure .015" thick.
- The aftermarket backing plates can vary a good amount. The D0731 Ferodo pad seems to be a bit more loose in our abutments than our standard pad. The issue seems to be once installed (and driven on) the pad can slightly move top to bottom.



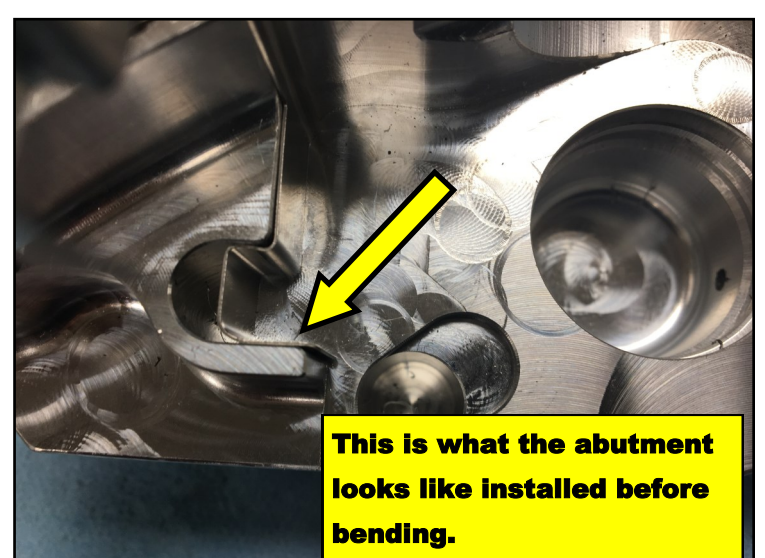
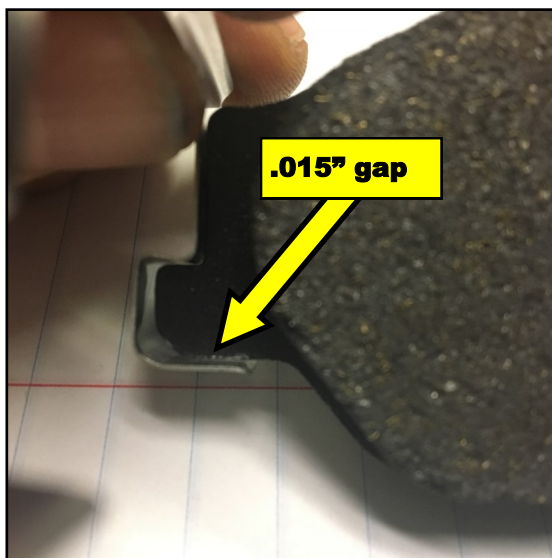
**Factory C5/C6 anchor**

The C5/6 abutment opening 7.340"



**Baer 6P caliper half**

The Baer 6p abutment opening 7.325"



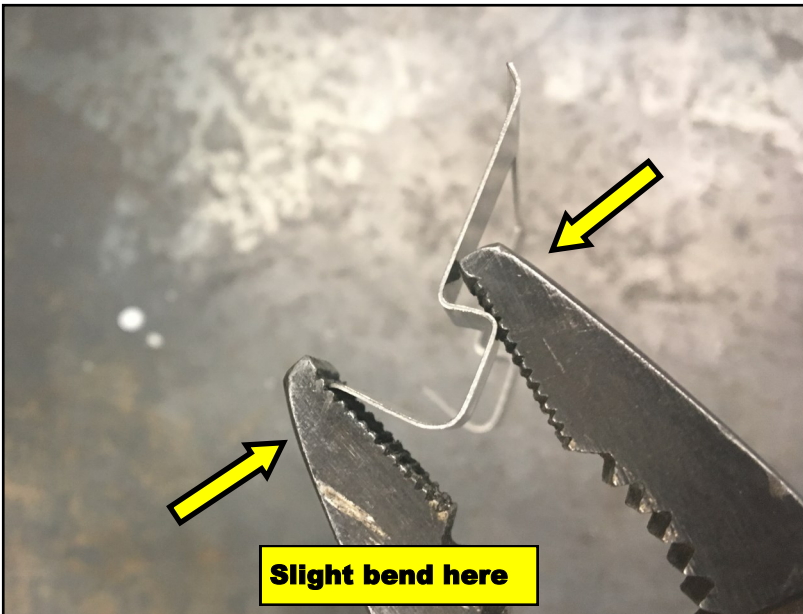
**Solution:** Using a small pliers, we can put a slight bend (Which will act like a spring) in the bottom of the abutment. This will hold a bit of tension on the bottom of the pad.



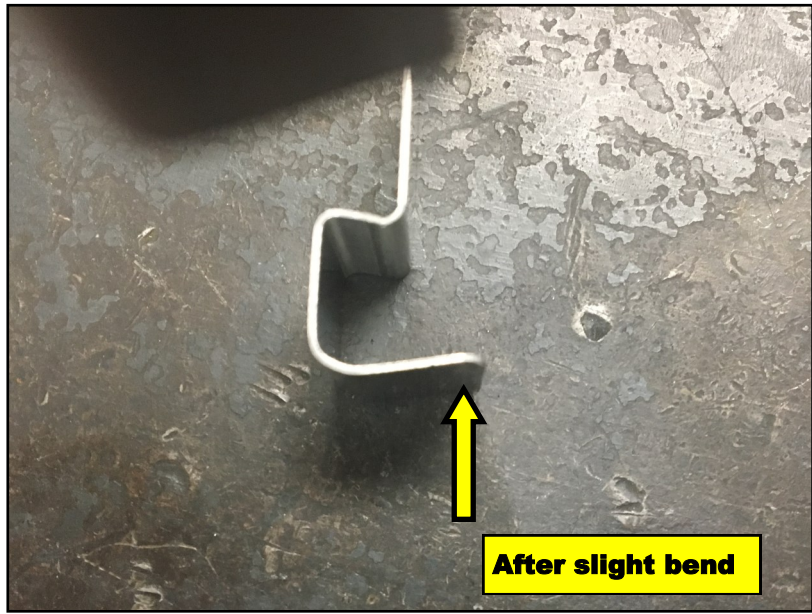
**before bend**



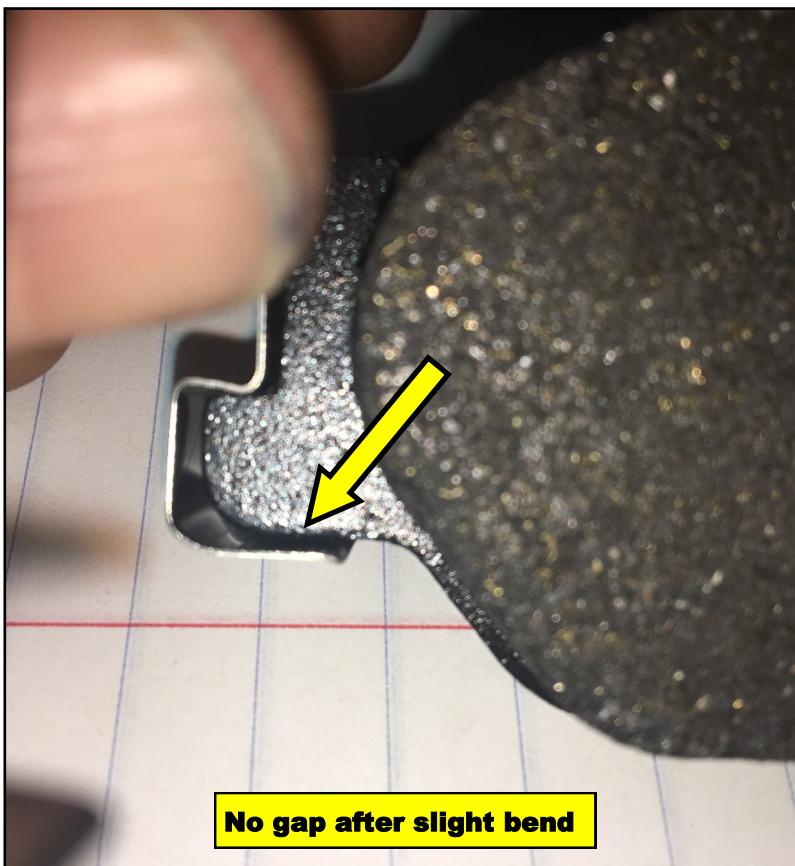
**Use pliers to slightly bend**



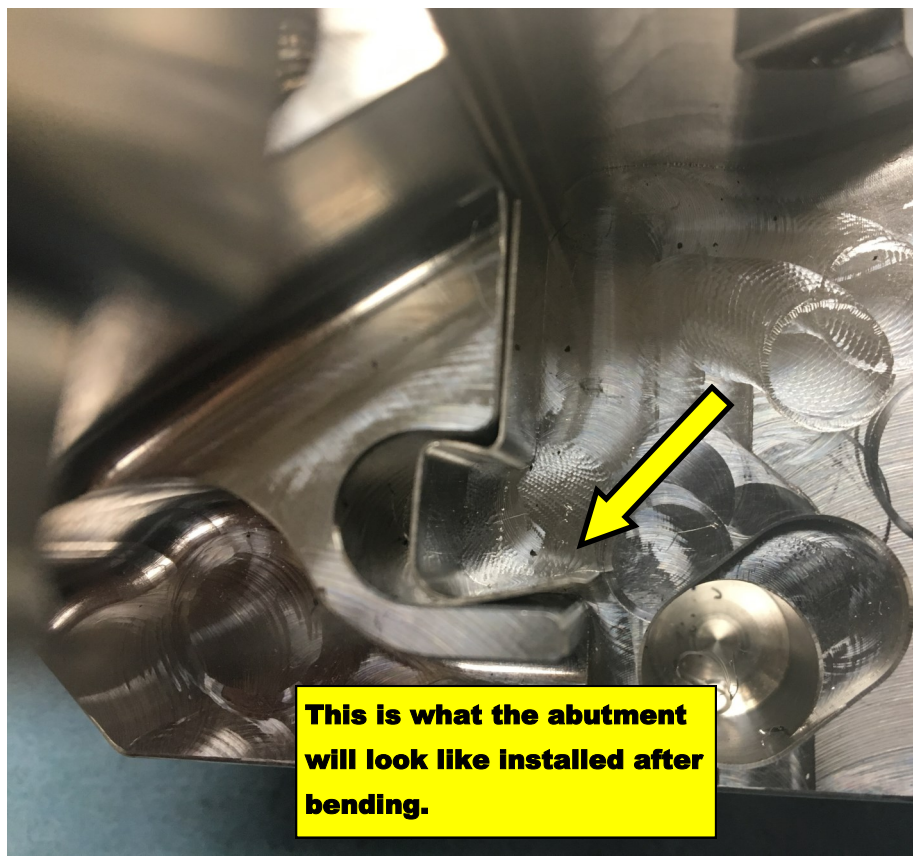
**Slight bend here**



**After slight bend**



**No gap after slight bend**



**This is what the abutment will look like installed after bending.**