



Part Number **ES2608341**

**Audi B6/B7
A4/S4/RS4
Refrigerated
Glove Box Kit**

This tutorial is provided as a courtesy by ECS Tuning.

Proper service and repair procedures are vital to the safe, reliable operation of all motor vehicles as well as the personal safety of those performing the repairs. Standard safety procedures and precautions (including use of safety goggles and proper tools and equipment) should be followed at all times to eliminate the possibility of personal injury or improper service which could damage the vehicle or compromise its safety.

Although this material has been prepared with the intent to provide reliable information, no warranty (express or implied) is made as to its accuracy or completeness. Neither is any liability assumed for loss or damage resulting from reliance on this material. SPECIFICALLY, NO WARRANTY OF MERCHANTABILITY, FITNESS FOR A PARTICULAR PURPOSE OR ANY OTHER WARRANTY IS MADE OR TO BE IMPLIED WITH RESPECT TO THIS MATERIAL. In no event will ECS Tuning, Incorporated or its affiliates be liable for any damages, direct or indirect, consequential or compensatory, arising out of the use of this material.

Audi B6/B7 (A4/S4/RS4) Refrigerated Glove Box Kit



ES2608341

You may not know it, but your Audi B6/B7 glove box can be converted into a small cooler to chill food and beverages. Installation is fast and easy, and can be completed in less than an hour using a few simple hand tools.

The upgrade is easier than most, since this is a factory installed option in some models. Our Refrigerated Glove Box Kit comes with an insulated OEM hose to route cold air from the evaporator case to the glove box. There's even a pop-out rubber plug in the evaporator case and a knockout plug in the rear wall of the glove box, ready and waiting. Since the hose flows cold air whenever the AC is on, there's a vent control at the glove box inlet so you can regulate the flow of cold air, or turn it off completely, at any time.

The **ES2608341** kit comes with an insulated tube that connects the air conditioning evaporator housing to a knock-out hole in the back wall of the glove box.

The round vent control head screws onto the threaded neck of the tube to hold it in place, and also to regulate air flow into the glove box.



Tools we used:

- 8mm socket
- short extension
- long extension
- ratchet
- (optional: small thumb driver ratchet head - not shown)
- common screwdriver
- pocket knife (optional: scissors, X-Acto knife or razor blade)

Audi B6/B7 (A4/S4/RS4) Refrigerated Glove Box Kit



ES2608341

Step 1

Open the passenger side door.

Drop the glove box door.

Pry outward on the front edge of the dashboard side panel to pop it from its retainer clips. Remove the side panel.



Step 2

Reach in with a long extension and 8mm socket and remove the two screws at the rear of the glove box.



Step 3

Reach up beneath the front upper edge of the glove box liner and use the 8mm socket with the short extension to remove the five glove box retainer screws.



Audi B6/B7 (A4/S4/RS4) Refrigerated Glove Box Kit



ES2608341

Step 4

Remove the two lower glove box screws.

(Here, we're using a small thumb ratchet and an 8mm socket to remove the right side screw.)

The mating screw is located at the opposite (left) lower edge of the glove box.



Step 5

Drop the glove box assembly down into the footwell and unplug the yellow wire harness electrical connector for the glove box lights.

Remove the glove box.

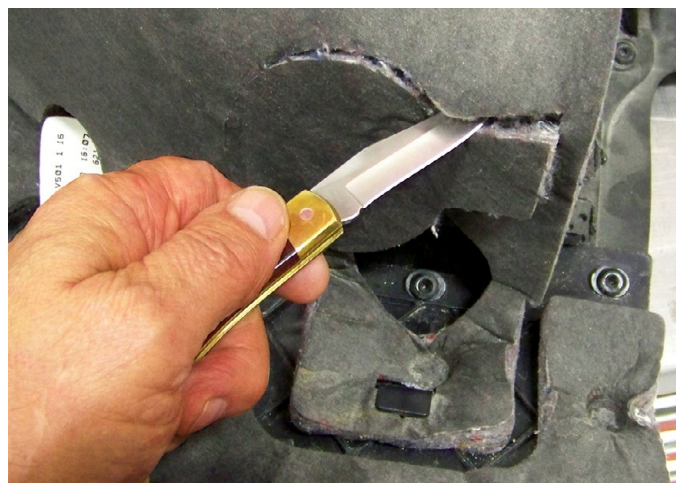


Step 6

Working at the rear of the glove box, locate the area in the insulation that has a pre-cut outline.

Using a sharp knife or other suitable substitute (scissors, X-Acto knife, etc.), cut around the perforated edge of the insulation and pull the flap back to expose the knockout plug.

No need to remove the insulation completely; just pull back the flap.



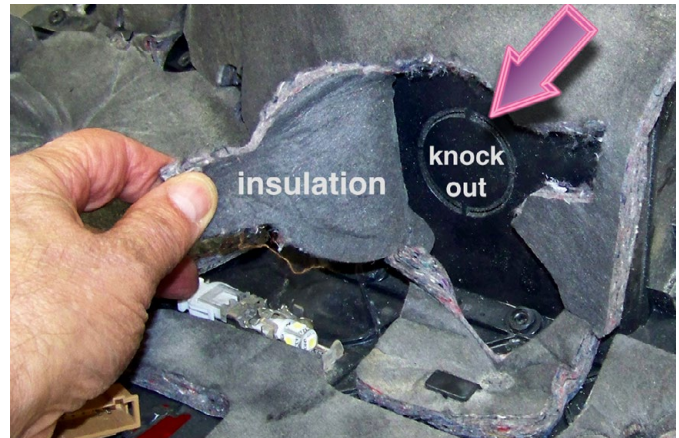
Audi B6/B7 (A4/S4/RS4) Refrigerated Glove Box Kit



ES2608341

Step 7

With the insulation pulled back, you'll see the knockout plug at the rear of the glove box.



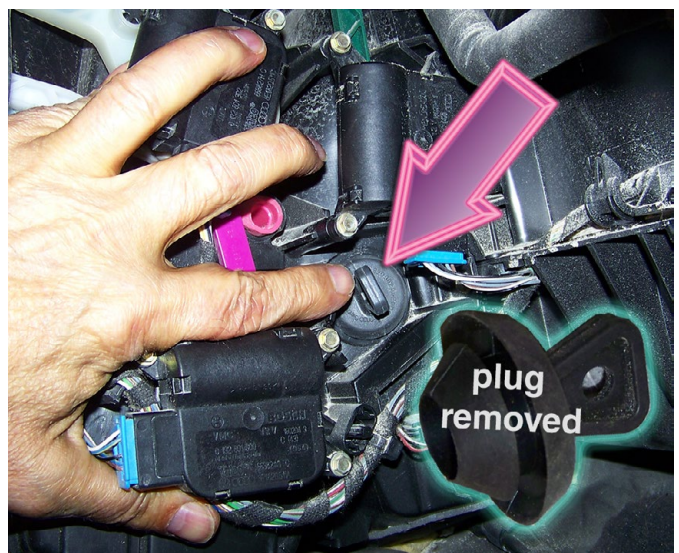
Step 8

Use a common screwdriver or other similar tool to pry the knockout hole from the glove box.



Step 9

With the glove box prepared, reach in and remove the rubber plug from the right side of the evaporator housing. The plug has a small pull handle for this purpose; just grab it and pull it out.



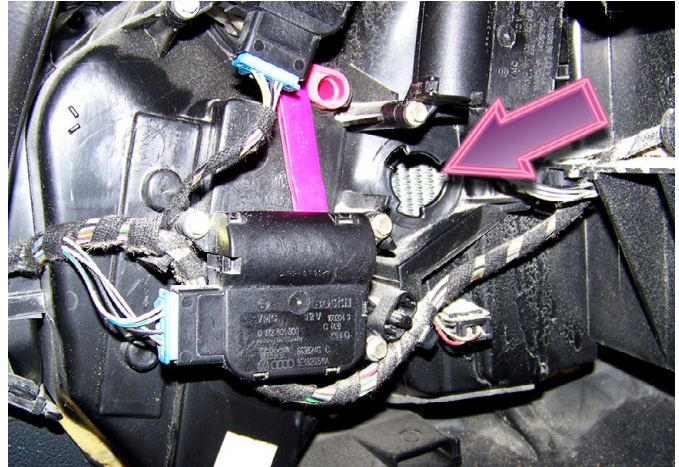
Audi B6/B7 (A4/S4/RS4) Refrigerated Glove Box Kit



ES2608341

Step 10

This photo shows the side of the evaporator case after the plug has been removed. Note the three notches in the opening. These will be used to lock the cold air tube in place.



Step 11

Insert the raised locking tabs (arrow) on the neck of the cold air hose into the notches in the evaporator opening.

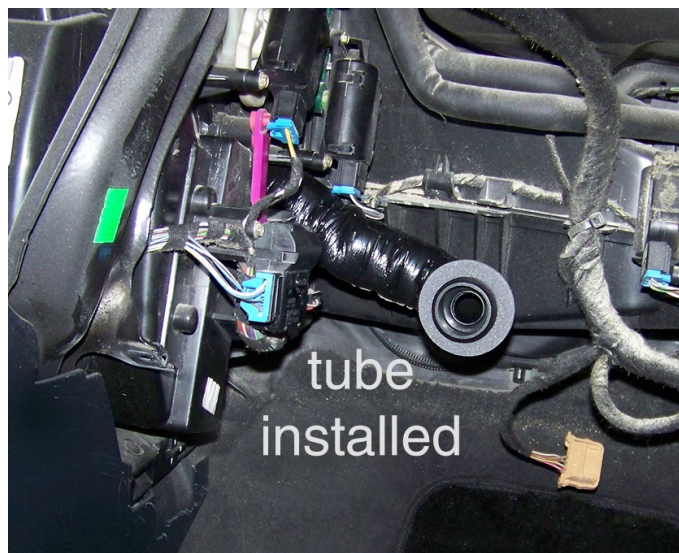
Rotate the tube by hand counterclockwise until the hose tabs lock in place.



Step 12

When properly installed in the evaporator case, the outlet of the cold air tube should face toward you, as shown here.

When the glove box is reinstalled, the tube outlet will align with the knockout hole.



Audi B6/B7 (A4/S4/RS4) Refrigerated Glove Box Kit



ES2608341

Step 13

Reinstall the glove box. Insert a couple of glove box screws to hold the box in place loosely.

(Don't forget to reconnect the yellow wire harness connector for the glove box lights. See Step 5.)

Reach behind the box and insert the cold air tube through the knockout, as shown here.



Step 14

Reach into the glove box from the front and screw the vent control head over the threaded end of the cold air tube. Hand tighten only.

When complete, the vent valve should look like this.

(Rotate the head of the valve to regulate air flow.)



Finish Up

Replace the remaining glove box retaining screws and dashboard side panel.

Your glove box refrigeration vent is installed and ready to use.

Thanks for purchasing this product from ECS Tuning. We hope this tutorial has been useful and informative.

