



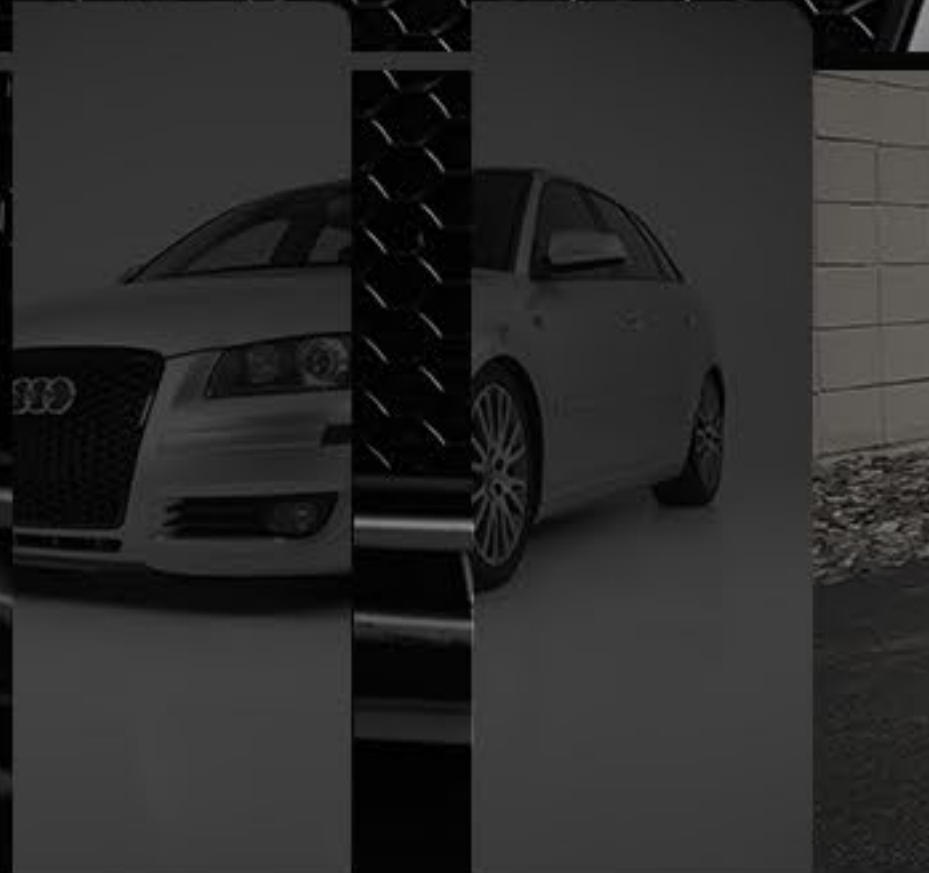
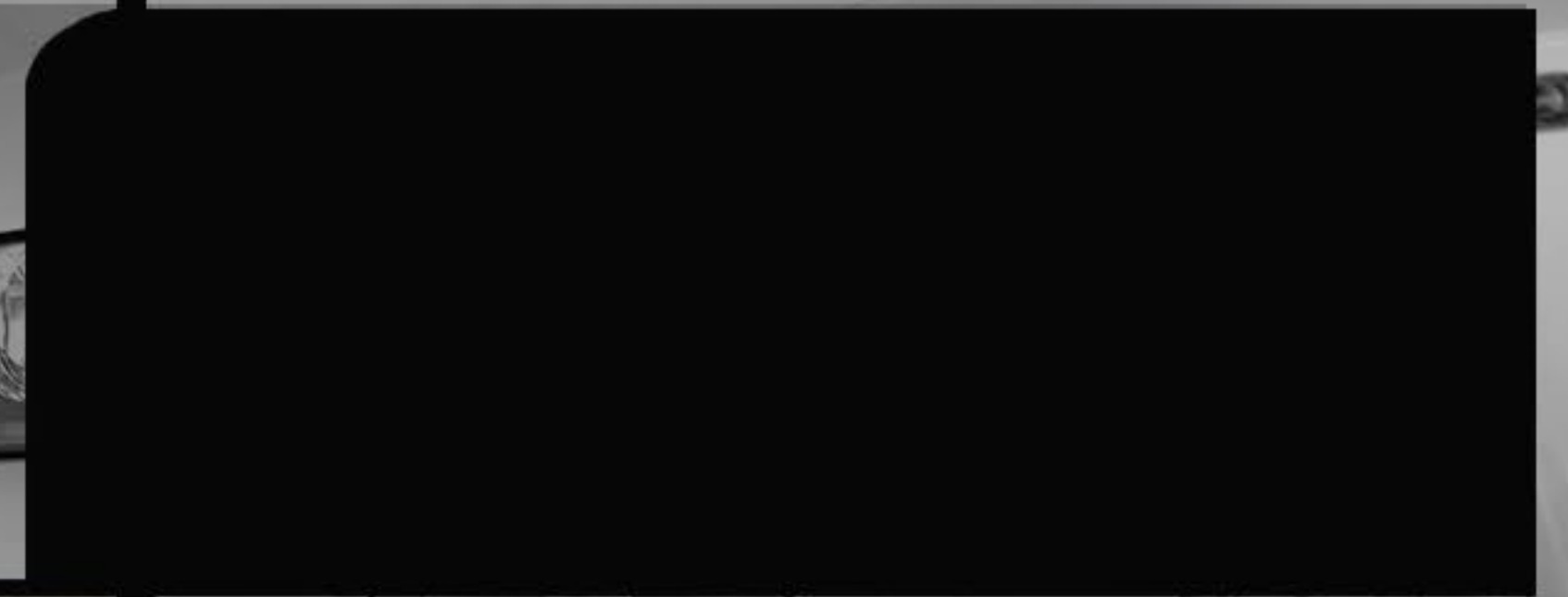
AUDI A3 8P  
RS4-STYLE GRILLE

INSTALLATION

TUTORIAL

[ES2717887](#)

[ES2717886](#)





*However you choose to lift the car into the air, always ensure the car is secured properly and that the parking brake is engaged.*

*Safety eyewear is also recommended when working underneath a vehicle.*

### Step 1

To begin the installation, the front main belly pan must be removed to access the inner bumper.

Unbolt the three torx bolts and place the pan away from your workspace.





The fender liners must also be removed to access the inner bumper.

*\*Removing both front wheels will make removing the fender liners much easier.*



## Step 2

Remove the fender liner screws.

There are two separate fender liner pieces - a front lower and a upper piece.

Remove the screws for both pieces to easily slide them off of the vehicle.





### Step 3

When the fasteners are removed, pull back the flexible fender liner to expose the inside of the bumper cover.



### Step 4

Using a 10mm socket, extension, and ratchet, loosen and remove the fasteners that secure the front bumper cover to the fender.





**Step 5**  
Disconnect the left and right turn signal connectors from the bumper cover.



**Step 6**  
Disconnect the fog light electrical connector inside the bumper cover and let the wire hang.





### Step 7

Remove the three bolts at the front of the radiator cover panel.

Raise the back of the radiator cover panel and slide it rearward, away from the grille.

Remove the panel and lay it aside.



### Step 8

Pull straight out at the rear of the bumper cover ends until they clear the black plastic support pieces between the bumper cover and fender.





## Step 9

The grille itself is connected to the bumper via a series of clips and screws.

First, remove each screw.

The clips will require moderate effort to release.

Use a non-marring tool or a screwdriver to push inwards on each clip.

Some of the clips will require significant outward pressure on the grille to release.





The top corners of the grille have a securing tab that must be carefully released.



**Step 10**  
After each clip releases, remove the grille from the bumper and place the bumper on a scratch-free surface, free from your workspace.

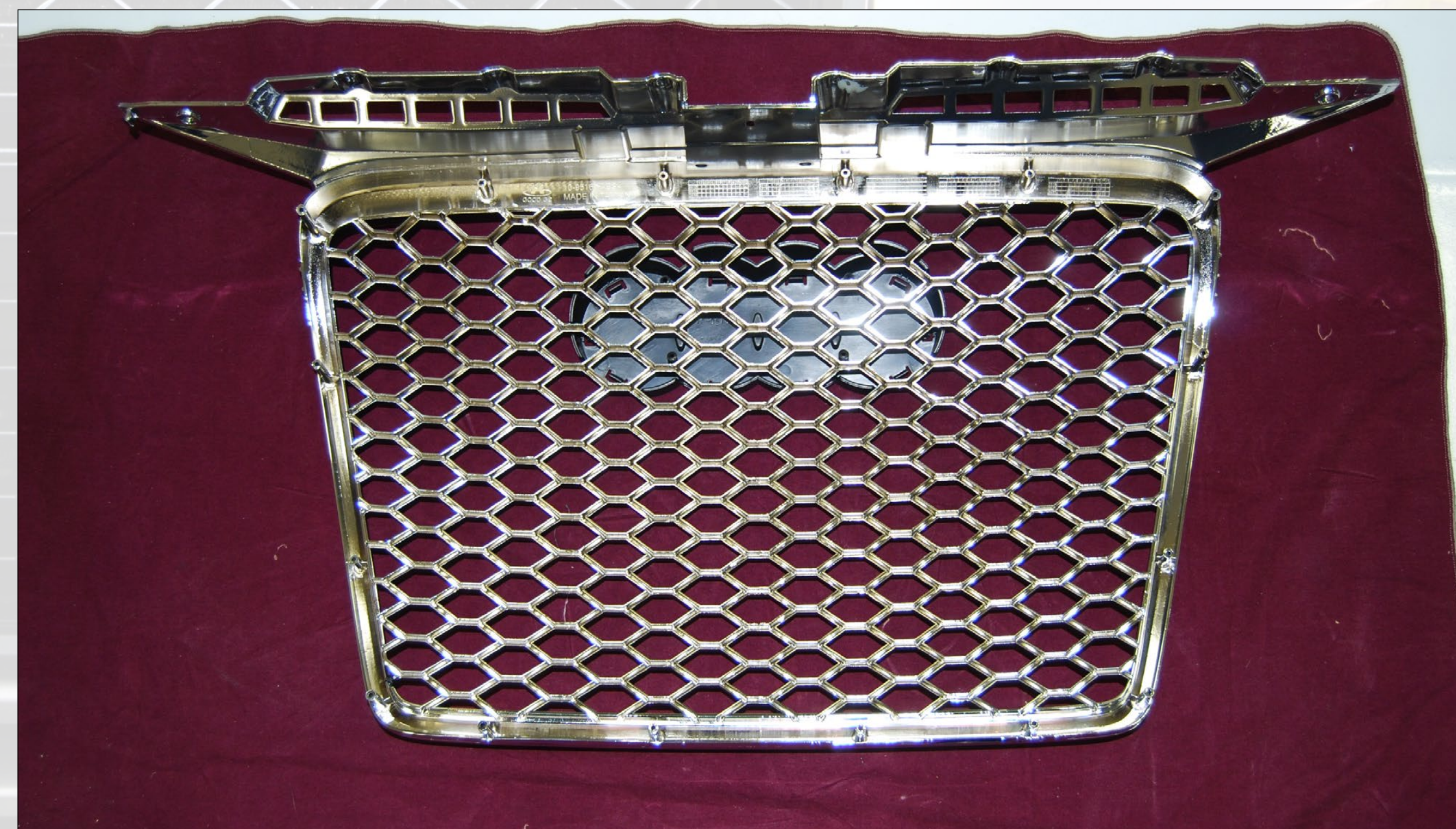




## Installing the Audi Logo and License Plate Holders

### Step 1

To install the Audi ring bracket, position the bracket at the location shown and flip the entire assembly upside down.

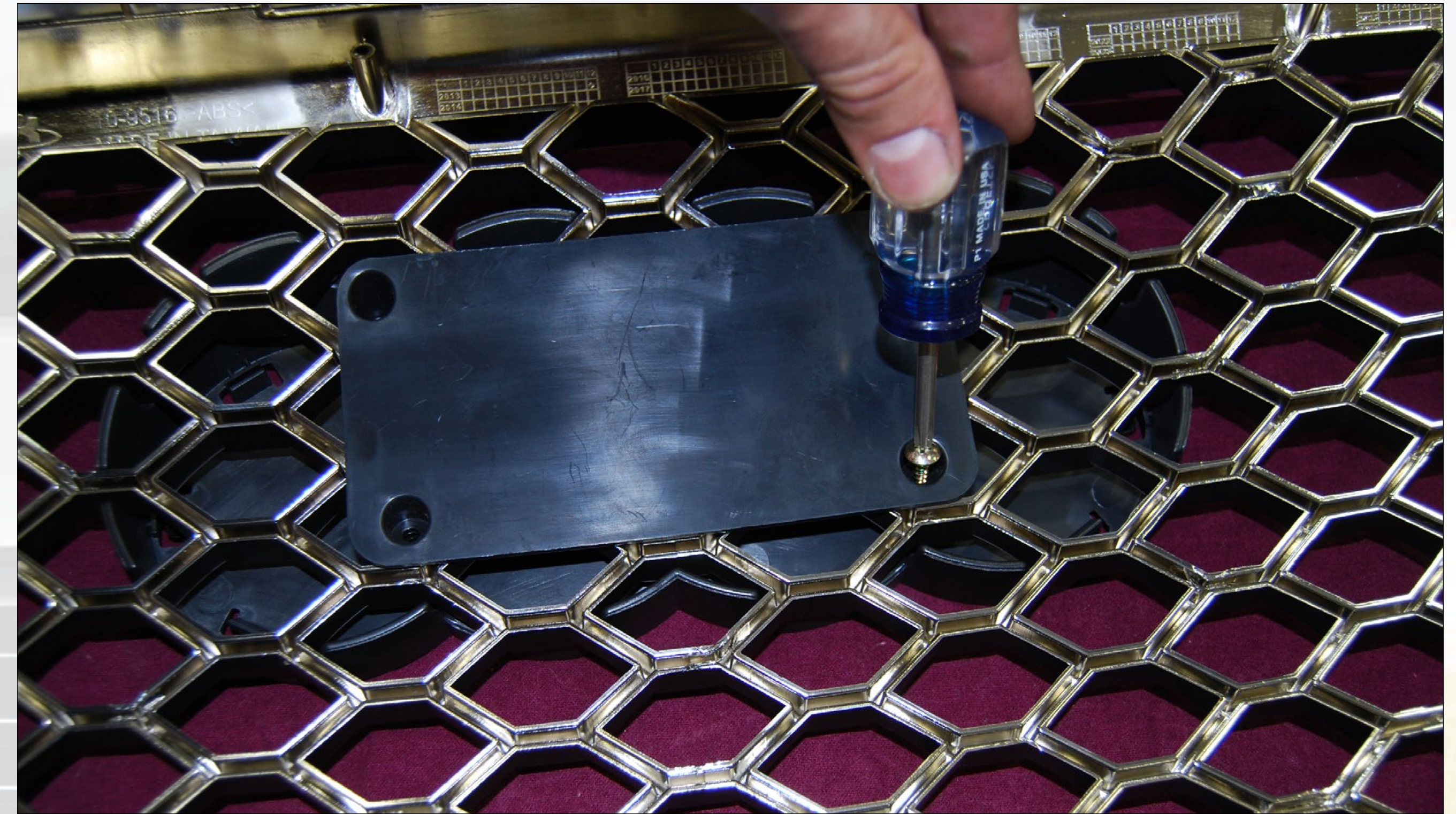




## Step 2

Use the straps and screws in the kit to attach the logo and its holder to the new grille.

Snug the screws on the straps before tightening. Ensure the correct position for the holder and tighten the screws fully.



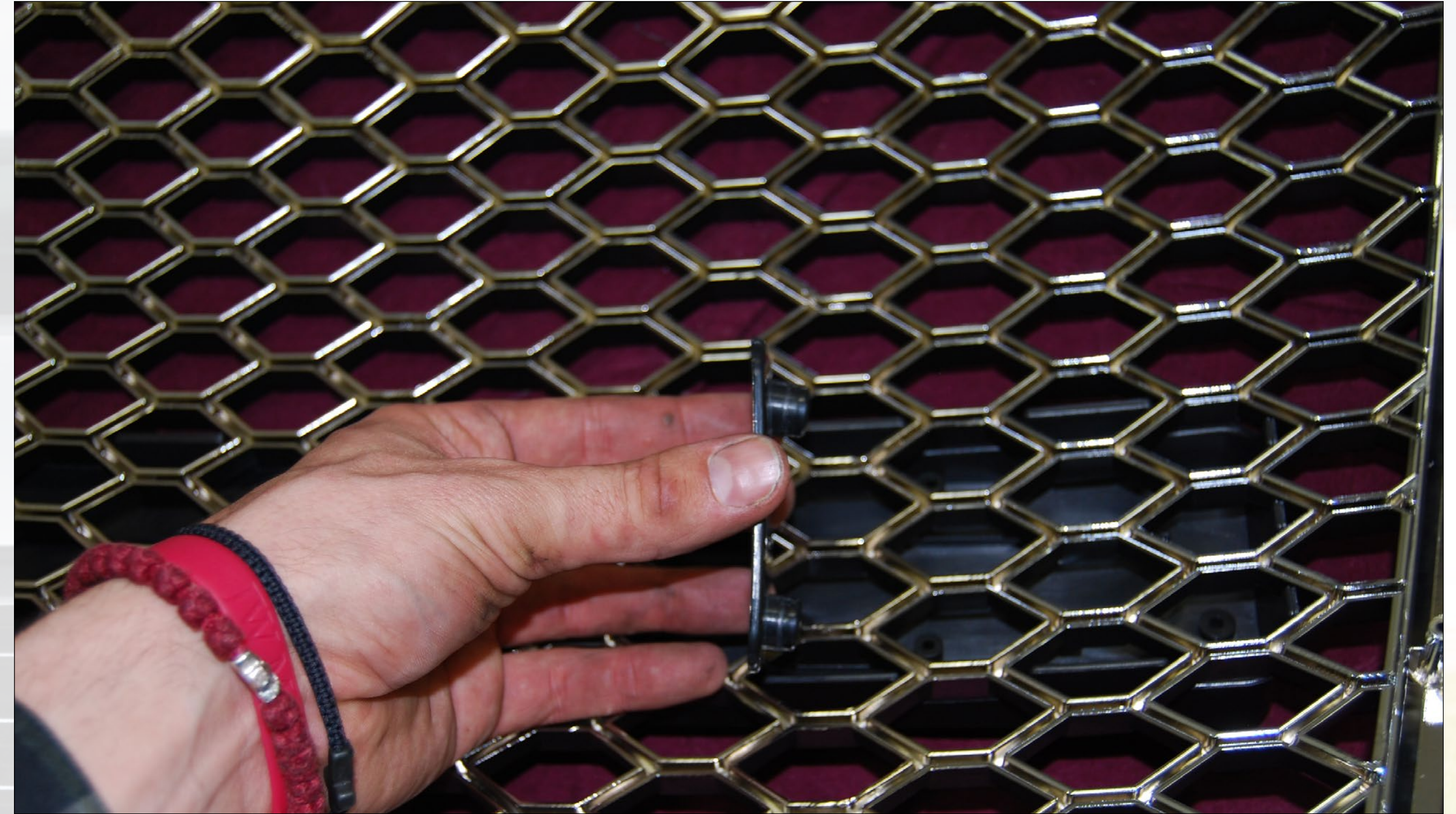
The process for installing the license plate holder is the same.





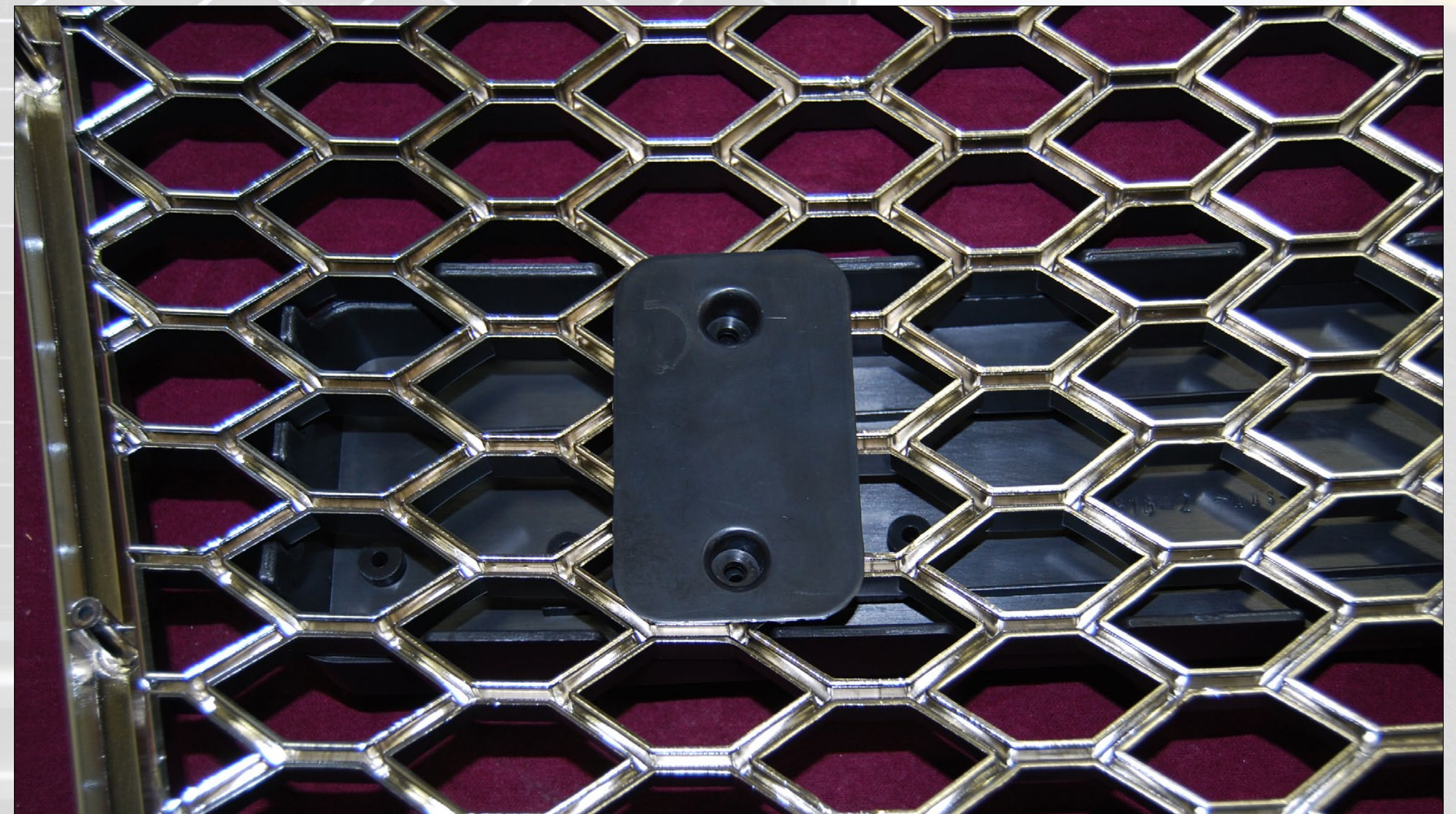
## Step 3

Use two provided brackets to secure the plate holder in the desired location.



## Step 4

Locate the exact desired position for the holder and tighten down the provided screws.





### Step 5

If using the logo bracket, you must remove the original Audi rings from your factory grille. Use a small screwdriver to carefully pry at the tabs until the chrome rings pop free.

Snap the rings into the provided black mounting bracket.



### Step 6

Install the new grille into the bumper cover.

Secure the bumper using the screws, ensuring each clip is seated completely.





\*The horizontal aluminum bumper support bar, if not modified, will show clearly through the new grille



Before reinstalling your bumper with the new RS4-style grille, consider painting not only this support bar, but the portion of the bumper that covers the aluminum bar.





Reinstall the bumper/grille assembly, according to the following steps:

- . Slide the bumper cover and grille back onto the car.
- . Replace the nuts and bolts at the fender and bumper.
- . Reconnect the fog lights.
- . Reattach the fender liners.
- . Replace the top grille screws
- . Reinstall the radiator cover
- . Reinstall the belly pan.
- . Reinstall the wheels.



**Your ECS RS4-style Grille Installation is Complete!**

This tutorial is provided as a courtesy by ECS Tuning.

Proper service and repair procedures are vital to the safe, reliable operation of all motor vehicles as well as the personal safety of those performing the repairs. Standard safety procedures and precautions (including use of safety goggles and proper tools and equipment) should be followed at all times to eliminate the possibility of personal injury or improper service which could damage the vehicle or compromise its safety.

Although this material has been prepared with the intent to provide reliable information, no warranty (express or implied) is made as to its accuracy or completeness. Neither is any liability assumed for loss or damage resulting from reliance on this material. SPECIFICALLY, NO WARRANTY OF MERCHANTABILITY, FITNESS FOR A PARTICULAR PURPOSE OR ANY OTHER WARRANTY IS MADE OR TO BE IMPLIED WITH RESPECT TO THIS MATERIAL. In no event will ECS Tuning, Incorporated or its affiliates be liable for any damages, direct or indirect, consequential or compensatory, arising out of the use of this material.

**Address:** 1000 Seville Road, Wadsworth, OH 44281

**Phone:** 1.800.924.5172

**Web:** [www.ecstuning.com](http://www.ecstuning.com)