



## Installation Procedures

### B6 or MKV Rear Fog Lamp Installation Guide

**This tutorial is provided as a courtesy by ECS Tuning.**

Proper service and repair procedures are vital to the safe, reliable operation of all motor vehicles as well as the personal safety of those performing the repairs. Standard safety procedures and precautions (including use of safety goggles and proper tools and equipment) should be followed at all times to eliminate the possibility of personal injury or improper service which could damage the vehicle or compromise its safety.

Although this material has been prepared with the intent to provide reliable information, no warranty (express or implied) is made as to its accuracy or completeness. Neither is any liability assumed for loss or damage resulting from reliance on this material. SPECIFICALLY, NO WARRANTY OF MERCHANTABILITY, FITNESS FOR A PARTICULAR PURPOSE OR ANY OTHER WARRANTY IS MADE OR TO BE IMPLIED WITH RESPECT TO THIS MATERIAL. In no event will ECS Tuning, Incorporated or its affiliates be liable for any damages, direct or indirect, consequential or compensatory, arising out of the use of this material.



## **B6 - MKV Rear Fog Lamp Installation Guide**

### **Safety first:.**

**When working with your vehicles electrical system; always disconnect the battery! Avoid shorting any circuits, or probing around wires. Failure to follow these safety precautions, and all others, could result in irreversible damage to your vehicles electrical system, failure to start, fire, and/or personal injury. Before you undertake this installation, it is important that you read the following instructions! Listed below are the necessary tools and skills required to complete the job. If the installation of this product seems overwhelming, please contact a qualified installer in your area. Be aware that disconnecting your battery may require you to input your radio anti-theft code, so make sure you have it handy.**

**Estimated Installation Time: 1.5 Hour**

### **Tools Required:**

- A 3/8 Socket Wrench
- A 3/8 Torx T20 socket
- A Small Screwdriver
- A HEX-CAN Cable & Driver
- VAGCOM
- Schwaben Universal Terminal Release Tool Set ( Shwaben Part # CE-70/2)

### **Parts Required:**

- Trigger Wire (VW Part 000 979 009)
- A European Headlight Switch

ECS Tuning 1000 Seville Road. Wadsworth, Ohio 44281  
**Phone:** 1-800-924-5172 **Fax:** 330-331-2022 **Web:** [www.ecstuning.com](http://www.ecstuning.com)

## B6 - MKV Rear Fog Lamp Installation Guide



1. Disconnect your battery and locate your stock headlight switch to the left side of your steering wheel.



2. Make sure the switch is in the off position and push the switch in towards the dash.



3. Turn the knob in between the first and second position as shown in the picture.



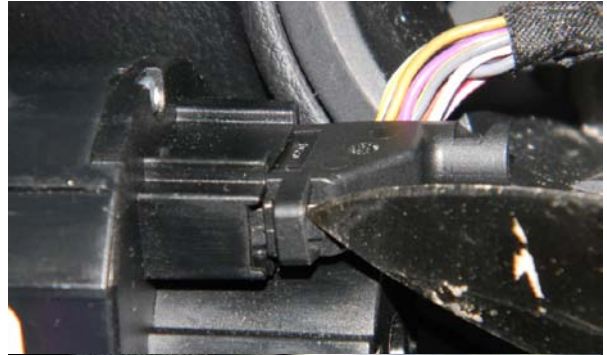
4. Now you should be able to pull the entire assembly out of the dash easily. If it seems to be stuck, restart and try again to avoid any damage to the switch.



## B6 - MKV Rear Fog Lamp Installation Guide



5. With the switch removed, turn it to the back side to see the connector. Locate the locking tab and push it in to remove the harness from the switch.



6. It should remove easily slide apart once the clips are moved. If it is hard to pull apart, stop and look for any other obstructions to avoid damage to the clips.



7. Locate the small locking tab that holds the connector jacket on to the connector. Pry the tab up to free it from the connector.



8. Remove the connector jacket.

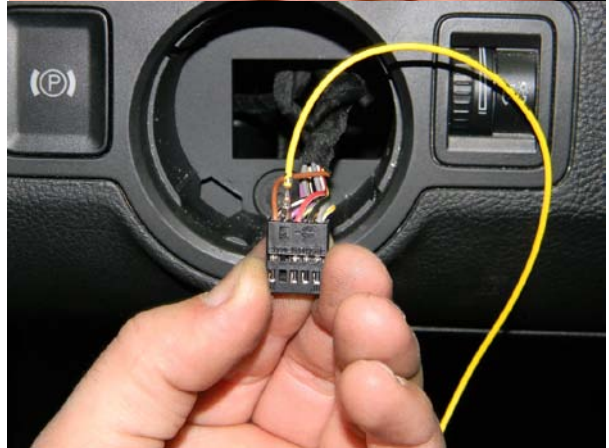


## B6 - MKV Rear Fog Lamp Installation Guide



9. Orient the connector as shown in your hand. The connector has numbers to label each slot. This side shows slots 6 to 10 from left to right.

11. Insert your new trigger wire (VW Part 000 979 009) into slot number 7.



12. If your vehicle has a compartment door under the light switch, it can be easily removed to help run the new trigger wire to the bottom of the dash. Here is a picture of the compartment removed. There are only two tabs that need pushed out of the way on top to unhook the door.



13. Under the dash on the drivers side foot well, locate and remove the three t20 torx screws holding the cover on.

## B6 - MKV Rear Fog Lamp Installation Guide

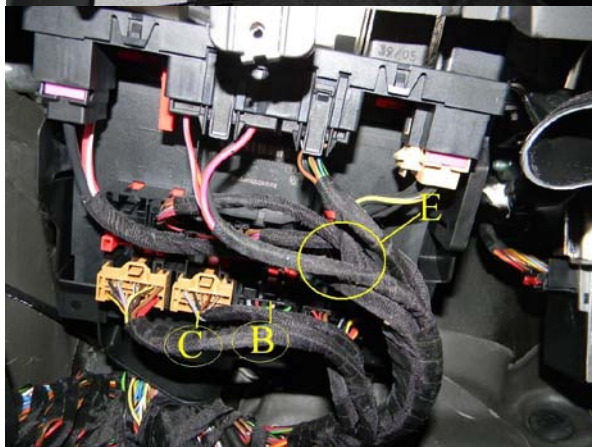


14. Take off the OBD2 connector and remove the light so the plastic cover can be removed from the car for easier access to under the dash.

15. This is your view when you are under the dash. In between the two rows of connectors there is a red tab on both sides. Slide it towards the drivers door to disarm the safety for the connectors. Now remove connector E. It is labeled on the plastic surrounding the clip.

16. This is the opposite side of the headlight switch harness. This also has a jacket on it. Follow steps 7 & 8 to remove it.

17. Turn the connector so you are looking the wire side of the connector.



## B6 - MKV Rear Fog Lamp Installation Guide

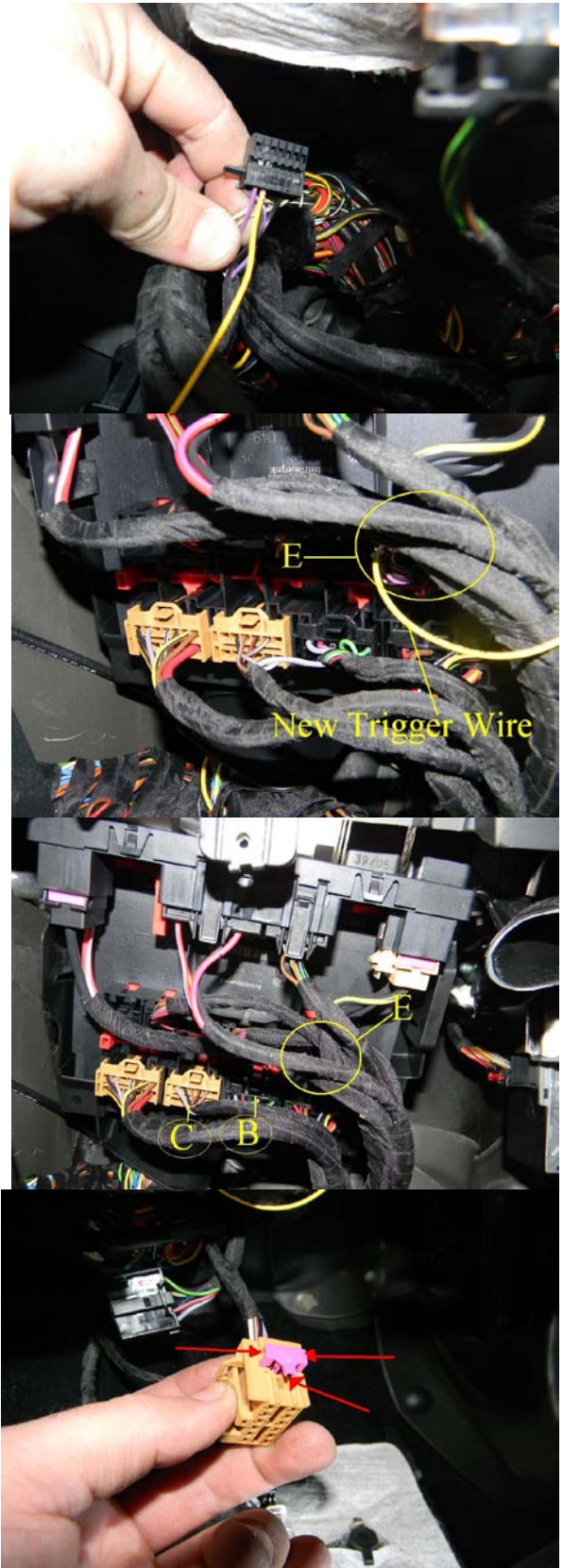


18. Take the other end of the trigger wire and insert it slot E13. This clip is done and is ready to be reinstalled.

19. This is what your wires should look like as of now.

20. Now unplug connector B & C. Connector B is black and C is orange.

21. On both connectors, there is a pink safety tab that hold the pins in place. Take a small screw-driver and gently pry the pin out.



## B6 - MKV Rear Fog Lamp Installation Guide



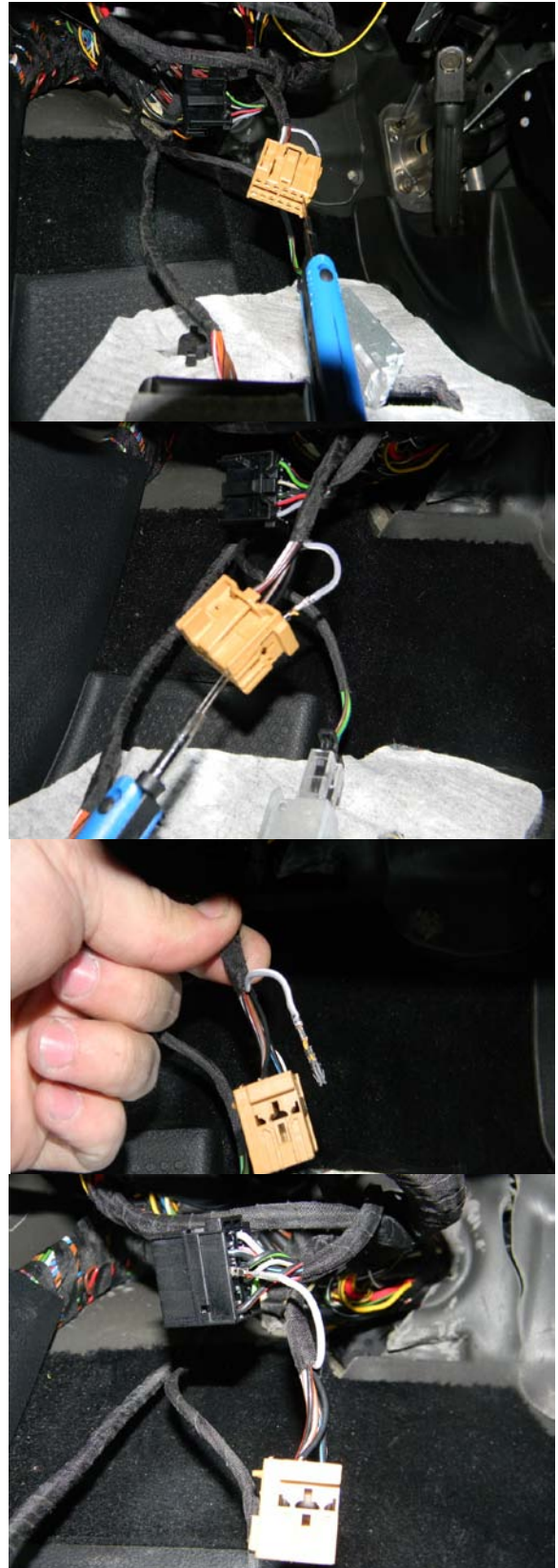
22. Take your terminal release tool CE-56 from your Schwaben Universal Terminal Release Kit (Schwaben Part # CE-70/2) and insert it into connector C slot C12 (Grey/White Wire).



23. Push the tool above and below the female spade slot in front of the connector. This will release the locking tabs inside the connector and allow you to pull out the wire. Do NOT try to do this without the proper tool. If material gets broken off inside the clip, it will not reinstall!

24. Remove the white/grey wire from connector C.

25. Relocate C12 to connector B in slot B4. Now reinstall all the connectors and plastic cover. This concludes the physical installation.



## B6 - MKV Rear Fog Lamp Installation Guide

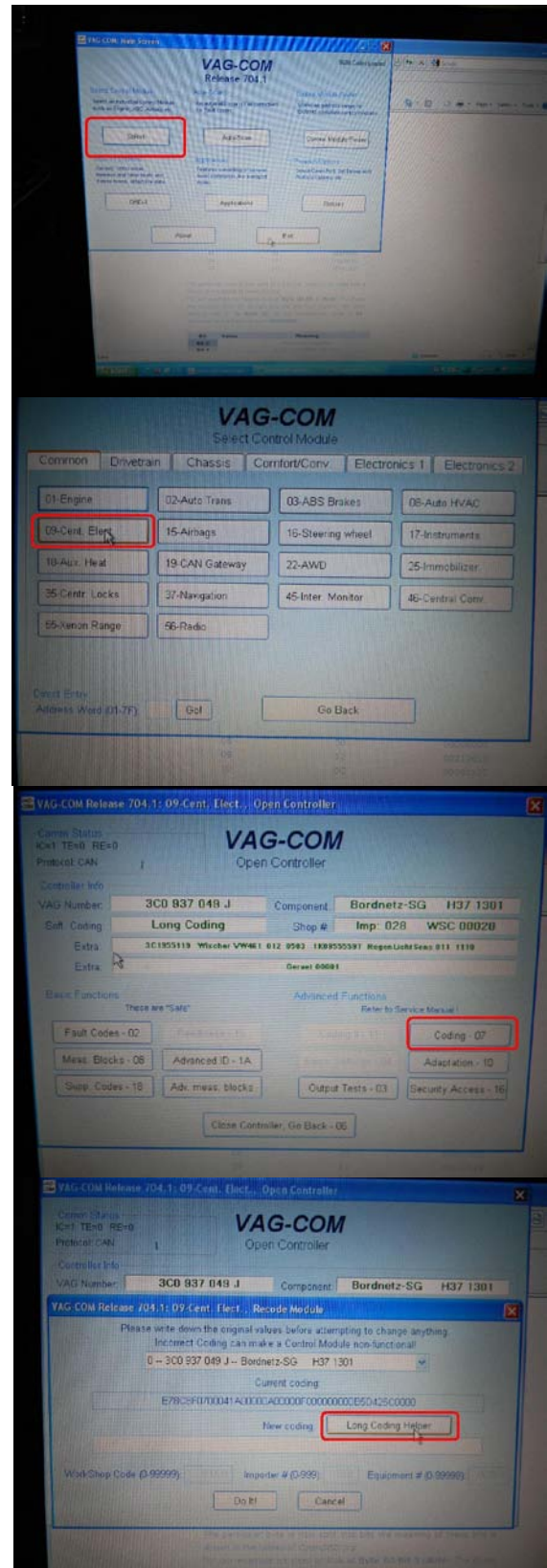


26. Connect your HEX-CAN cable to your OBD2 port and open up VAGCOM. Click on “Select Control Module”.

27. Click on “09-Cen. Elect”

28. Click on “Coding – 07”

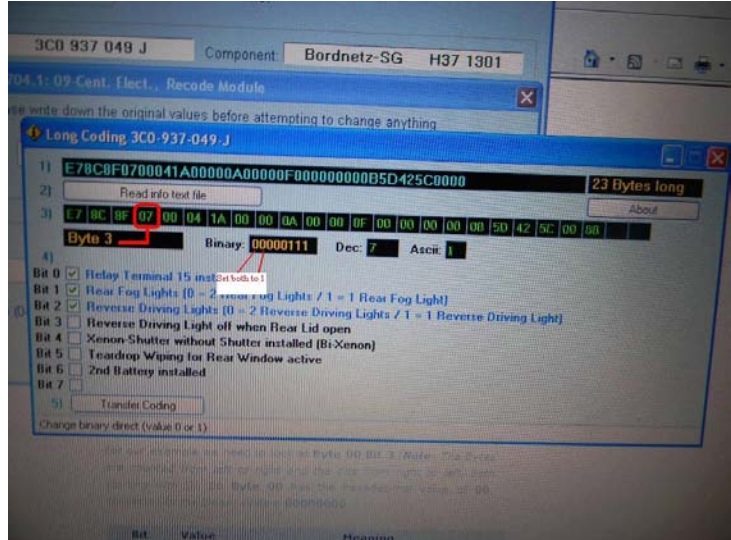
29. Click on “Long Coding Helper”



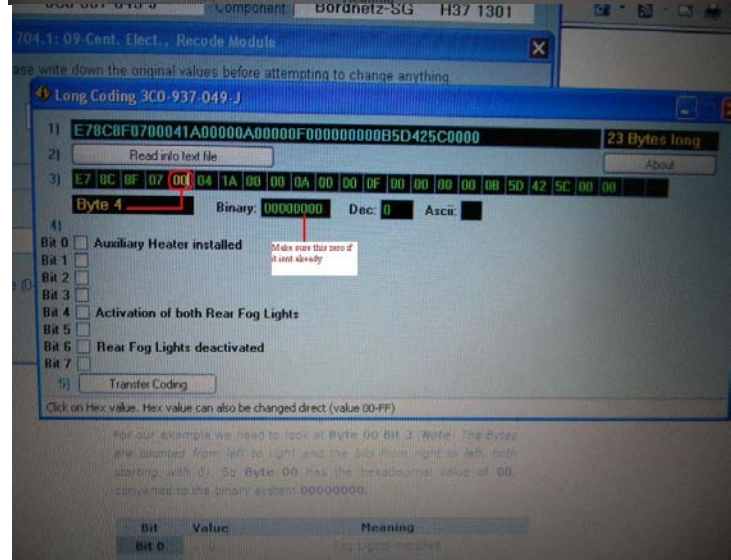
## B6 - MKV Rear Fog Lamp Installation Guide



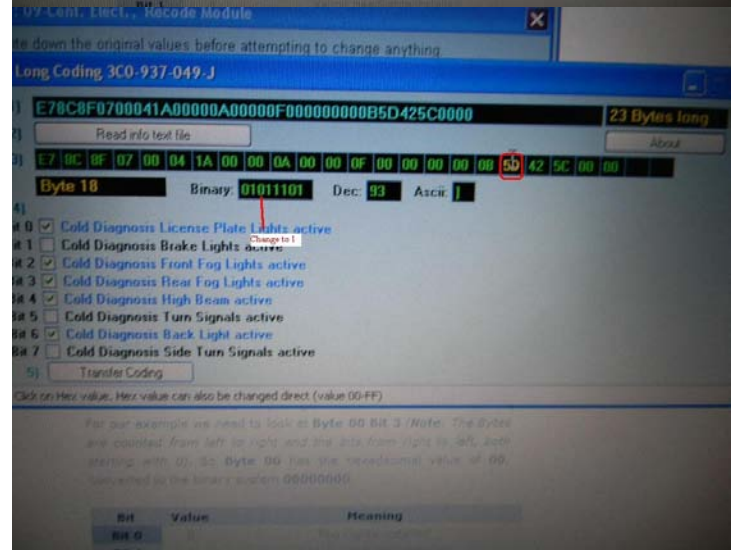
30. Click on the 4<sup>th</sup> grouping in line 3. Once clicked, “Byte 3” should appear below as shown. Go to the slot labeled “Binary:” and change the 1<sup>st</sup> and 2<sup>nd</sup> number to “1”.



31. Click on the 5<sup>th</sup> grouping in line 3. Byte 4 should show up below now. Go to the slot labeled “Binary:” and change the 6<sup>th</sup> number to “0”.



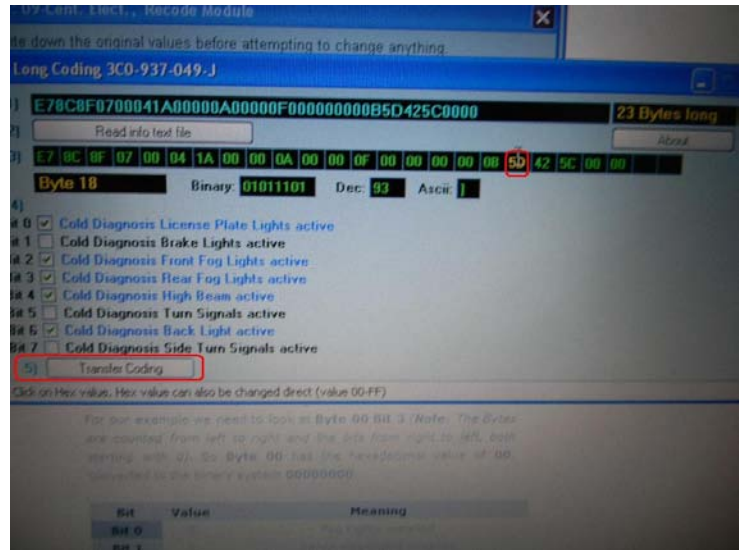
32. Click on the 18<sup>th</sup> grouping in line 3. Byte 4 should show up below now. Go to the slot labeled “Binary:” and change the 3<sup>rd</sup> number to “1”.



## B6 - MKV Rear Fog Lamp Installation Guide



33. Click on the “Transfer Coding” button to save and close the current window..



34. To finish the installation, press “Do it!” and this will complete your installation!

