



Installation Procedures

ECS MKIV Leveling Installation Instructions

This tutorial is provided as a courtesy by ECS Tuning.

Proper service and repair procedures are vital to the safe, reliable operation of all motor vehicles as well as the personal safety of those performing the repairs. Standard safety procedures and precautions (including use of safety goggles and proper tools and equipment) should be followed at all times to eliminate the possibility of personal injury or improper service which could damage the vehicle or compromise its safety.

Although this material has been prepared with the intent to provide reliable information, no warranty (express or implied) is made as to its accuracy or completeness. Neither is any liability assumed for loss or damage resulting from reliance on this material. SPECIFICALLY, NO WARRANTY OF MERCHANTABILITY, FITNESS FOR A PARTICULAR PURPOSE OR ANY OTHER WARRANTY IS MADE OR TO BE IMPLIED WITH RESPECT TO THIS MATERIAL. In no event will ECS Tuning, Incorporated or its affiliates be liable for any damages, direct or indirect, consequential or compensatory, arising out of the use of this material.



ECS MKIV Leveling Installation Instructions

Safety first:

When performing any work on your vehicle it is important that you make safety your main concern. Properly support the vehicle with jack stands on each side. Never work under a vehicle supported only by a jack.

Before you undertake this installation, it is important that you read the instructions; and that you also have the necessary tools and skills required to complete the job. If the installation of this product seems overwhelming, please contact a qualified installer in your area.

Note: The Following installation was done on a Volkswagen R32. Installation for other vehicles will be similar.

Tools Required:

Coat Hanger
Needle Nose Pliers
Paper Clip
Small flat Head Screw Driver
Wire Cutters

Preparation:

Park automobile on a level, suitable working area.
Be sure to put the vehicle in park and/or engage the parking brake.
Disconnect the battery before performing any work on your vehicles electrical system.

ECS MKIV Leveling Installation Instructions



Step One: Installing the Rheostat

To Begin the installation process, start by removing your headlight switch. In case you don't know how to go about doing this, firmly push inward on the switch knob, and turn to the right. The switch will stay in this "release" position until you turn it back to the left. Pull the switch out of the dash.



ECS MKIV Leveling Installation Instructions



With the headlamp switch removed, hook your finger through the headlamp switch recess and push on the back of the dimmer switch until it pops out of its slot. Unclip the dimmer switch from the harness.



ECS MKIV Leveling Installation Instructions



Take a small screwdriver and as indicated in the above diagram, pry the pin lock up to release the dimmer control wires.

Insert the dimmer wires into the supplied dimmer/rheostat connector in the same order that they were removed.

Loop the Red 6" wire from the back of the rheostat connector to the back of headlamp switch recess.



You now should have something resembling the above illustration.

ECS MKIV Leveling Installation Instructions



Using the supplied scotch lock, connect the red wire from the rheostat to the yellow / red wire (#56) on the headlamp connector. This is the power wire for the rheostat leveling control signal

Connect the rheostat/dimmer assembly, and snap the new leveling switch in place.

Step Two: Running the control wire.

Now, that you have the dimmer/rheostat wired and installed, all that is left to do in regards to the rheostat installation is run the control wire under the hood. You may, as a car enthusiast have some aftermarket accessories already routed under the hood. You may run the control wire any way you prefer. For instructional purposes we give you a simple wire routing scheme that is easy to follow.

ECS MKIV Leveling Installation Instructions



Remove the above grommet and insert a straightened coat hanger or similar device through this hole.



**ECS MKIV Leveling
Installation Instructions**



Tape the long control wire to the end of the hanger inside the vehicle.
Proceed to carefully pull it through the firewall in a manner that will not bend the fragile female pin ends crimped on the wire.

ECS MKIV Leveling Installation Instructions



With the wire completely pulled through, a thin slice in the grommet will ensure the wire does not rub on the fire wall.

Insert the leveling control wire into pin 5 on the ECS 10-10 pin harness. Plug the 10-10 pin harnesses in between the car harness and the headlamps (left + right respectively)

Of course, you may choose another routing option entirely. Routing the wire, once again is up to you.

Depending on aftermarket modifications, or various customizations. Be careful of parts rubbing on the wire, and secure it out of the way of all moving/ rubbing parts.

At this point you have successfully completed the installation of the rheostat and running of the control wire.



ECS MKIV Leveling Motor Installation Instructions

Safety first!

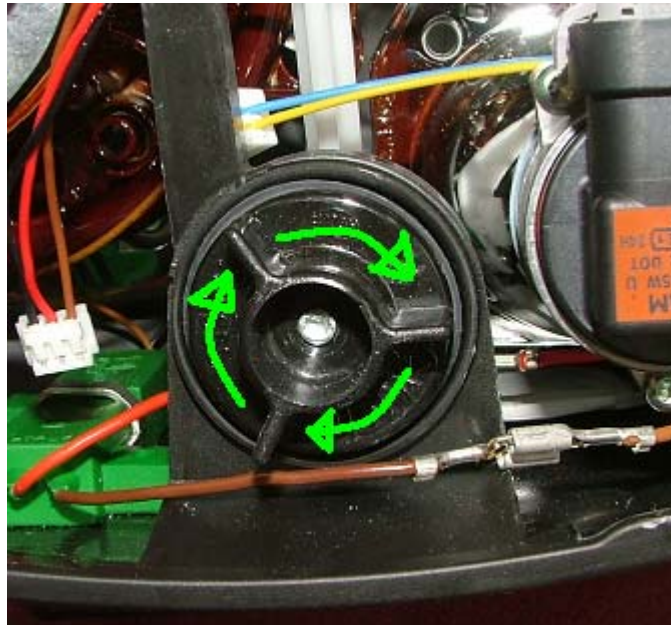
Before you undertake this installation, it is important that you read the following instructions! Listed below are the necessary tools to complete the job. If the installation of this product seems overwhelming, please contact a qualified installer in your area.

Tools Required:

none

Instruction Note: Installation of the motor requires that your headlight housing be removed from the vehicle.

ECS MKIV Leveling Installation Instructions

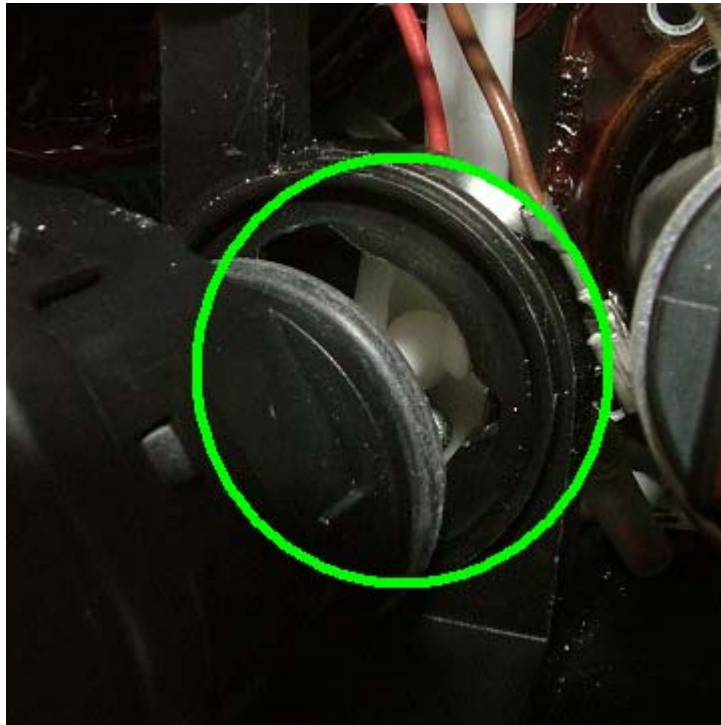


Start by removing the “dummy” holder post from the headlight.
The “dummy” must be twisted toward the right to remove.

ECS MKIV Leveling Installation Instructions



The ball on the end of the leveling motor post must be inserted inside the circled plastic groove.

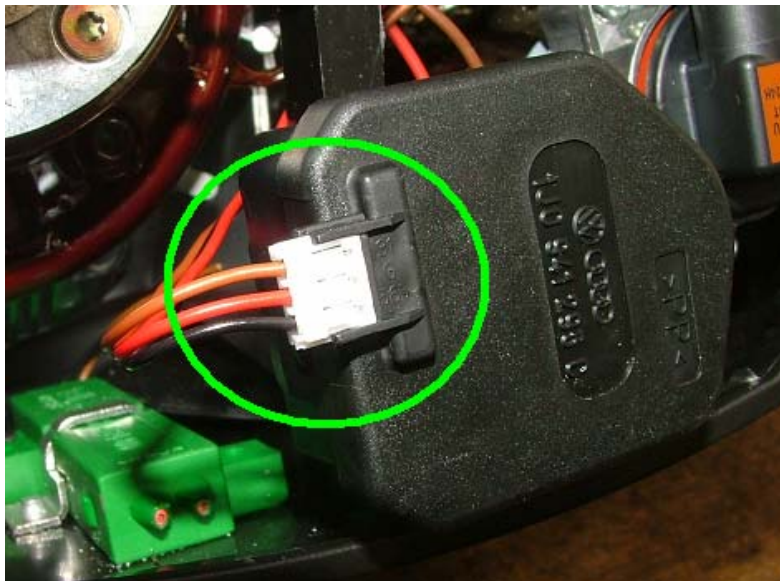


Ensure the ball is seated in the groove before completely installing the motor.

ECS MKIV Leveling Installation Instructions



Twist motor assembly in direction of arrow to install.



Clip loose 3 wire connector on, and repeat procedure for the other headlight assembly.

This completes the installation of headlight leveling motors.