



## Installation Procedures

### Jetta MKVI Fog Light Installation Instructions

**This tutorial is provided as a courtesy by ECS Tuning.**

Proper service and repair procedures are vital to the safe, reliable operation of all motor vehicles as well as the personal safety of those performing the repairs. Standard safety procedures and precautions (including use of safety goggles and proper tools and equipment) should be followed at all times to eliminate the possibility of personal injury or improper service which could damage the vehicle or compromise its safety.

Although this material has been prepared with the intent to provide reliable information, no warranty (express or implied) is made as to its accuracy or completeness. Neither is any liability assumed for loss or damage resulting from reliance on this material. SPECIFICALLY, NO WARRANTY OF MERCHANTABILITY, FITNESS FOR A PARTICULAR PURPOSE OR ANY OTHER WARRANTY IS MADE OR TO BE IMPLIED WITH RESPECT TO THIS MATERIAL. In no event will ECS Tuning, Incorporated or its affiliates be liable for any damages, direct or indirect, consequential or compensatory, arising out of the use of this material.



## **Jetta MKVI Fog Light Installation Instructions**

### **Safety first:**

**When working with your vehicles electrical system; always disconnect the battery! Avoid shorting any circuits, or probing around wires. Failure to follow these safety precautions, and all others, could result in irreversible damage to your vehicles electrical system, failure to start, fire, and/or personal injury. Before you undertake this installation, it is important that you read the following instructions! Listed below are the necessary tools and skills required to complete the job. If the installation of this product seems overwhelming, please contact a qualified installer in your area.**

**Be aware that disconnecting your battery may require you to input your radio anti-theft code, so make sure you have it handy.**

**Estimated Installation Time: 1.5 Hours**

### **Tools Required:**

- Metal Hanger
- 3/8 Ratchet
- 3/8 extension
- Wire Stripper
- Wire Cutter
- T25 Torx Driver
- T27 Torx Socket (3/8)
- 10mm Socket (3/8)
- Tape
- Sand Paper

### **Parts Required:**

- (2x) T25 Torx Screw
- Fog Lamp (Right)
- Fog Lamp (Left)
- ECS Wiring Harness - ES#:2215314
- Euro Headlight Switch
- Fog Light Insert (Right)
- Fog Light Insert (Left)



## Jetta MKVI Fog Light Installation Instructions



### 1. Running the wire

Step 1: Under the dashboard, you will see an OEM wiring harness that exits through a rubber grommet in the firewall. You want to thread your hanger through the rubber grommet and out to the engine bay.



Step 2: Wrap the wire around the hanger, and using a pair of pliers, bend the tip of the hanger to make a hook like figure around the wire. After Making the hook, take a piece of tape and wrap the wire onto the hanger.



## Jetta MKVI Fog Light Installation Instructions



Step 3: Pull the coat hanger back through the foot well, threading the wire through the fire wall.



## 2.Installing the Euro Switch

Step 1: Remove the OEM switch. To remove the OEM switch, first turn it into the off position. After turning the switch in the off position, Push the Button in gently and turn clockwise about 15 degrees.



The switch will then release, and you will be able to pull it out.

**Note\*** Exercise caution pulling the switch out in order to keep the OEM wiring harness intact and not damage it.



## Jetta MKVI Fog Light Installation Instructions



Step 2: Disconnect the OEM harness from the switch. To do this, gently press the two outer pins that are holding the connector in place.



While pushing the clips, gently pull on the switch, backing it away from the connector.



Step 3: thread the wire up to the OEM headlight harness. To do this you must first take off the plastic fuse cover under the Headlight switch. This cover comes off by a simple pull from the bottom up.



Now take the end of the wire that you have threaded through the firewall, and pull it up By the left side of the fuse box, and up to the OEM harness.





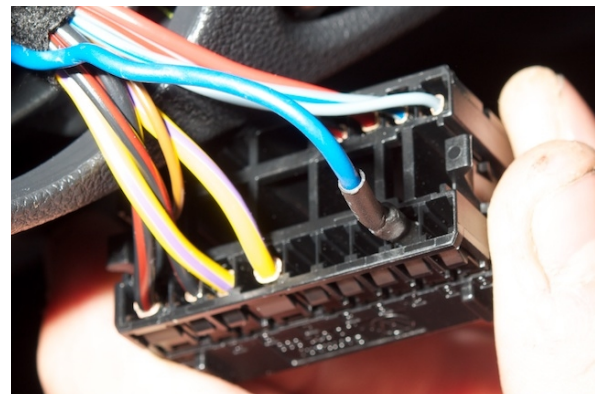
## Jetta MKVI Fog Light Installation Instructions



Step 4: Pull the blue wire up through the headlight switch hole so you can insert it into the harness.



Step 5: On the sides of the wiring harness connector, you will see number labels. Those labels mark the Pin number for each slot. The pin number to activate the front fog lights is pin #8. Your connector should look like the picture on the right when installed properly.



Step 5: Connect the Euro Switch to the OEM connector.



For added security, before reinstalling the switch, use a zip tie to ensure the wire is snug against the harness so it doesn't have play room.



## Jetta MKVI Fog Light Installation Instructions



Step 6: Install the Euro Switch  
To do this, hold it in the position it  
will sit in, and gently push it in.



Upon reaching the proper position, the  
switch will snap into the dash



After securing the switch and routing  
the wire around the left side of the  
fuse box, reinstall the plastic cover.



## Jetta MKVI Fog Light Installation Instructions



### 3. Relay Mounting, Under Hood Connections

Step 1: Locate the metal clip on the driver side strut housing. Remove the round clip by turning it counter-clockwise.



Now, Install the relay as shown to the right, and secure the clip by turning it clockwise.



The remainder of the wire inside of the car, and make a neat roll. Secure it with a zip tie, and neatly tuck it away behind the plastic to the left of the dead pedal.





## Jetta MKVI Fog Light Installation Instructions



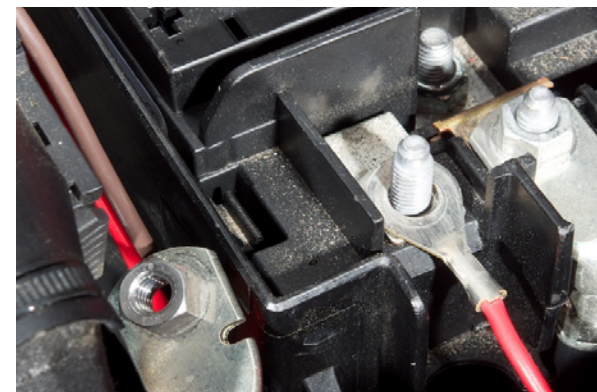
Step 2: remove the plastic cover that sits over the fuse box under the hood. The Fuse box is located on the right side of the battery.



After taking the cover off, remove the nut that is holding down the red cable. Use the 10mm socket and a 3/8 ratchet with the 3/8 extension attached. Remove the red cable.



Next install the red wire from the harness positioning the loop around the terminal where the red wire sits.



Take the red cable and reinstall the nut. Use the ratchet to tighten down the cable. Exercise caution not to over tighten the nut.



## Jetta MKVI Fog Light Installation Instructions



Secure the red harness cable to the OEM cable, approximately 3 inches from the terminal. Route the remainder of the wire between the battery and the fuse box.



Next, reinstall the cover of the fuse box.



Step 3: Install the brown cable of the harness to the battery's negative terminal. Lift up the battery cover, and route the brown cable from the harness to the negative terminal of the battery. After doing that, use a 10 mm socket with a 3/8 ratchet and a 3/8 extension, to remove the nut from the terminal bolt. Once the bolt is removed, route the wire and thread the bolt through the wire loop as shown to the right. Then proceed to tighten down the nut. Be careful not to over tighten the nut as it may result in damage to your connector.





## Jetta MKVI Fog Light Installation Instructions

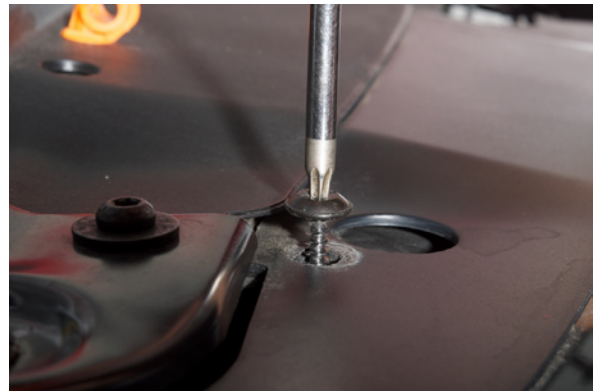


After tightening the nut, proceed to secure the brown harness wire to OEM wire that connects to the negative terminal. Use a zip tie and secure it about three inches away from the 90 degree kink in the brown OEM wire.



### 4. Running the Fog light wires to the front bumper

Step 1: remove the grille. Using a T25 Torx driver, remove the four bolts that hold the upper front grille in place.



After removing the bolts, gently pry on the grille from the top, downward to remove it. Use caution when pulling, as you do not want to break the retaining clips of the grille.



Next route the Two yellow wires around the right side of the fuse box. (Fuse box that was used for routing the red harness wire)

Tuck the wire neatly behind the head light.



ECS Tuning

1000 Seville Road, Wadsworth, OH 44281  
Phone: 1.800.924.5172

[www.ecstuning.com](http://www.ecstuning.com)

## Jetta MKVI Fog Light Installation Instructions



Now, route the yellow wires through the opening between the mounting bracket for the grille and the driver side headlight.



There is a rubber piece over the bolt shown to the right. Remove it and route the wires as shown.



The wires can wrap around the headlight bolt, and the rubber piece can be reinstalled.

Next go around the bumper support downwards and bring the wires back up on the other side. Now the wires are tucked behind the bumper support and have a clear accessible path to the driver side and passenger side headlight.





## Jetta MKVI Fog Light Installation Instructions



Step 2: Remove both outer grilles.



Now remove the lower middle grille.



## Jetta MKVI Fog Light Installation Instructions

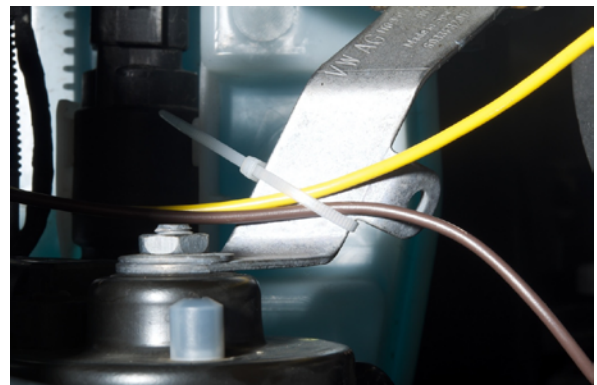


Step 3: With all that done, Its time to position the Fog light wires. There are two separate yellow wires. One is shorter than the other. The shorter wire get's routed to the driver side fog light. The longer of the two gets routed to the Passenger side fog light. We can start with the driver side.

Run both wires to the driver side fog opening. Then take the longer wire and run it along with the metal bumper support, to the other side.



Next secure the passenger side wire to the metal bracket holding the horn. Use a zip tie to ensure the wire is snug.





## Jetta MKVI Fog Light Installation Instructions



Step 4: On either side of the radiator there is a T27 Torx screw. This screw is visible when the side grilles are off and is easily identifiable due to the fact that it is on the same bracket with the two Frame bolts. This is where we will mount the ground wire for each of the fog lights.

Use your 3/8 ratchet and your T27 torx socket to remove the bolts.

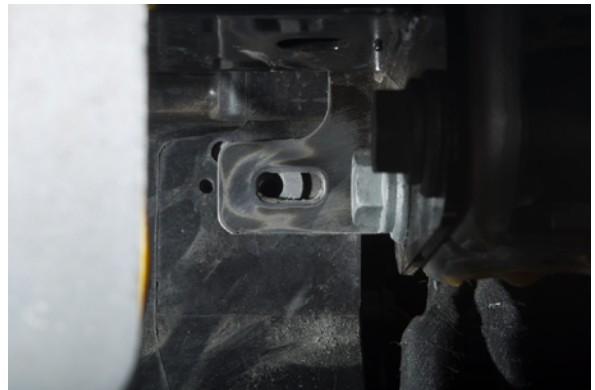
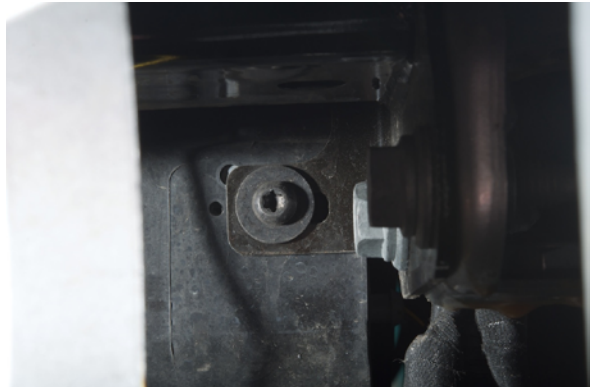
In order to get a clean ground, you must remove the paint from the bracket. Using a rough grit sand paper, sand down the paint from the bracket, where it surrounds the bolt. Do this until exposed metal is clearly visible.

Repeat these steps for both sides

Next, reinstall the bolt with the loop attached to it.

Do this for both sides as well.

After securing the wires, and re tightening the bolts, it's time to install the fog lights. Start by connecting the fog light to the harness plug.



## Jetta MKVI Fog Light Installation Instructions



Position the fog light into the housing.  
Insert the side with clips first and then  
using a T25 torx driver, twist the  
screw in to secure them in place.

## Jetta MKVI Fog Light Installation Instructions



### 5. Finalization

It is now time to install the fog light inserts and reinstall the grilles.

Run your fingers along the perimeter of the lower middle grille when installing it to make sure it snaps in completely.



Next, install the fog light inserts.

First line up the outer edge, and work your way towards the middle grille. Once again make sure all the clips are snapped in by pushing along the whole perimeter of the inserts.





## Jetta MKVI Fog Light Installation Instructions



Now reinstall the top grille by pushing the bottom clips in, and then reinstalling the four screws at the top. Use your T25 torx driver to ensure the grille is secure.

