



ZIZA INTERIOR LIGHTING KIT INSTALLATION TUTORIAL

[ES2724213](#)

R50 MINI COOPER
R53 MINI COOPER S/JCW
(7/2004-2006)

BEST VIEWED IN ADOBE® READER®

THIS TUTORIAL IS PROVIDED AS A COURTESY BY ECS TUNING.

PROPER SERVICE AND REPAIR PROCEDURES ARE VITAL TO THE SAFE, RELIABLE OPERATION OF ALL MOTOR VEHICLES AS WELL AS THE PERSONAL SAFETY OF THOSE PERFORMING THE REPAIRS. STANDARD SAFETY PROCEDURES AND PRECAUTIONS (INCLUDING USE OF SAFETY GOGGLES AND PROPER TOOLS AND EQUIPMENT) SHOULD BE FOLLOWED AT ALL TIMES TO ELIMINATE THE POSSIBILITY OF PERSONAL INJURY OR IMPROPER SERVICE WHICH COULD DAMAGE THE VEHICLE OR COMPROMISE ITS SAFETY.

ALTHOUGH THIS MATERIAL HAS BEEN PREPARED WITH THE INTENT TO PROVIDE RELIABLE INFORMATION, NO WARRANTY (EXPRESS OR IMPLIED) IS MADE AS TO ITS ACCURACY OR COMPLETENESS. NEITHER IS ANY LIABILITY ASSUMED FOR LOSS OR DAMAGE RESULTING FROM RELIANCE ON THIS MATERIAL. SPECIFICALLY, NO WARRANTY OF MERCHANTABILITY, FITNESS FOR A PARTICULAR PURPOSE OR ANY OTHER WARRANTY IS MADE OR TO BE IMPLIED WITH RESPECT TO THIS MATERIAL. IN NO EVENT WILL ECS TUNING, INCORPORATED OR ITS AFFILIATES BE LIABLE FOR ANY DAMAGES, DIRECT OR INDIRECT, CONSEQUENTIAL OR COMPENSATORY, ARISING OUT OF THE USE OF THIS MATERIAL.

Whenever replacing or removing interior trim, door panels, fascia and trim strips, dashboards, or window mouldings, the primary risk is in scuffing or damaging a highly visible area of your car.

Made of impact resistant plastic, Schwaben trim and moulding removal tools do not scratch or mar your interior like metal screwdrivers and pry bars will.

The complete Schwaben set is available at ECStuning.com; please click the link below for more information.



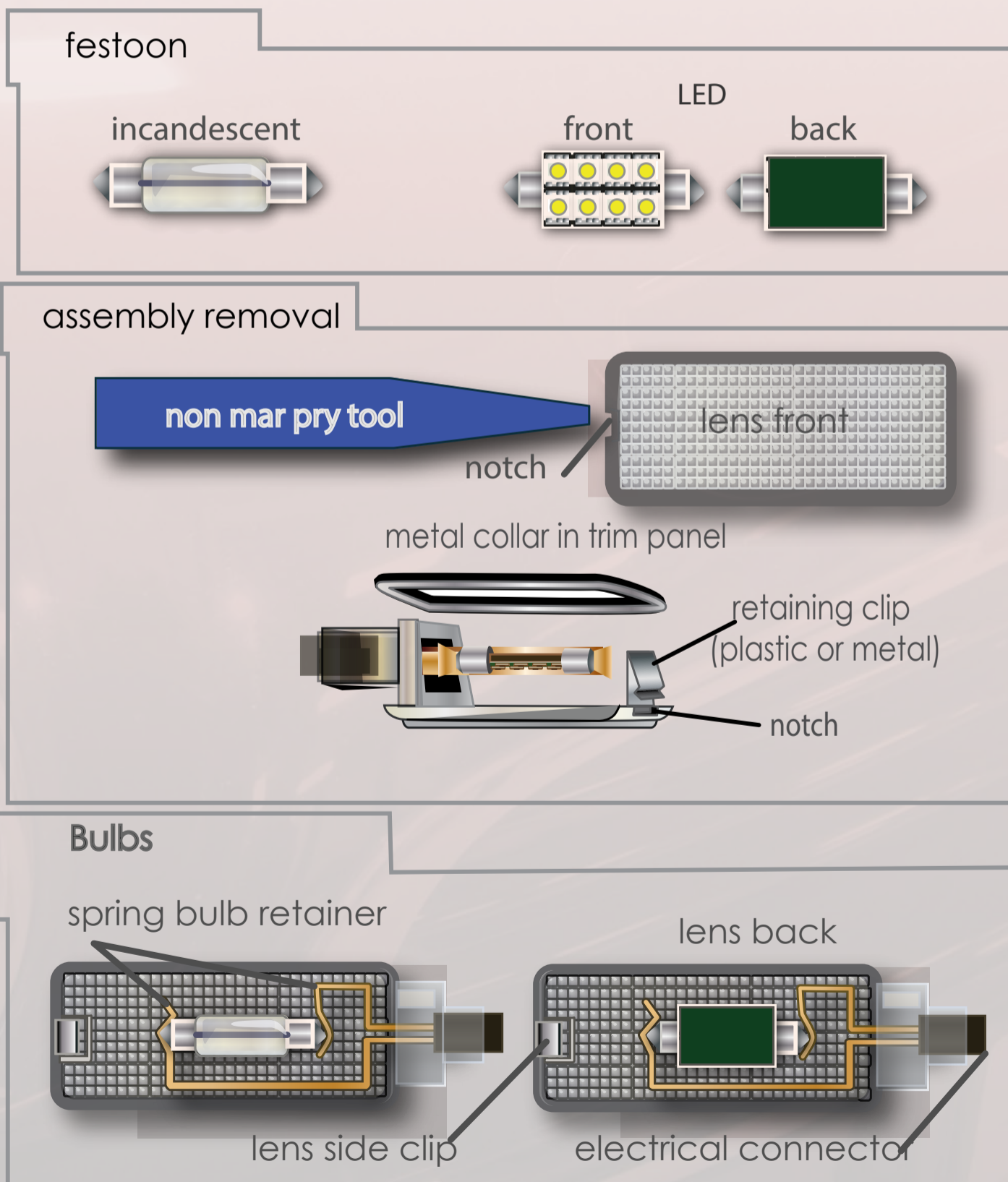
What are LEDs?

LEDs are Light Emitting Diodes, solid state devices that emit light when connected to electrical current. They have no moving parts or wire filaments to burn out. They emit a whiter light, run cooler, and last longer than the incandescent (filament style bulbs) we are replacing in this tutorial.

Unlike filament bulbs, LEDs are polarity sensitive. They have plus and minus (positive and negative) electrical terminals that must match the polarity of the applied voltage. Installing the bulbs “backwards” in the light bulb sockets (with reversed polarity) will not harm them, but they will not light. Flipping the bulb 180 degrees in the electrical connector cures this problem.

General Tips

- When prying down on the assemblies to remove them, pry on the notched end of the lens. Insert the narrow tool tip between the lens plastic and any metal collar used to reinforce the lens mounting hole. Push in on the retaining clip first to compress and release it. Then pry down.
- The spring bulb retainer is also the circuit conductor. If necessary, gently bend the metal retainer so it holds the bulb tight. This will help prevent intermittent or flickering LED operation caused by a loose connection.
- Install the bulbs with the LEDs facing *toward the lens*.



The primary challenge when replacing the incandescent interior lighting bulbs with LED lighting is in removing panels covered in cloth and plastics without leaving permanent scuffs or tears on the part or car.

The replacement of the bulb itself is exceedingly simple; the Ziza product has been designed as a direct-fit replacement - there will

Caution: Lights that are left on for more than 3-5 minutes will be dangerously hot - use care when handling.

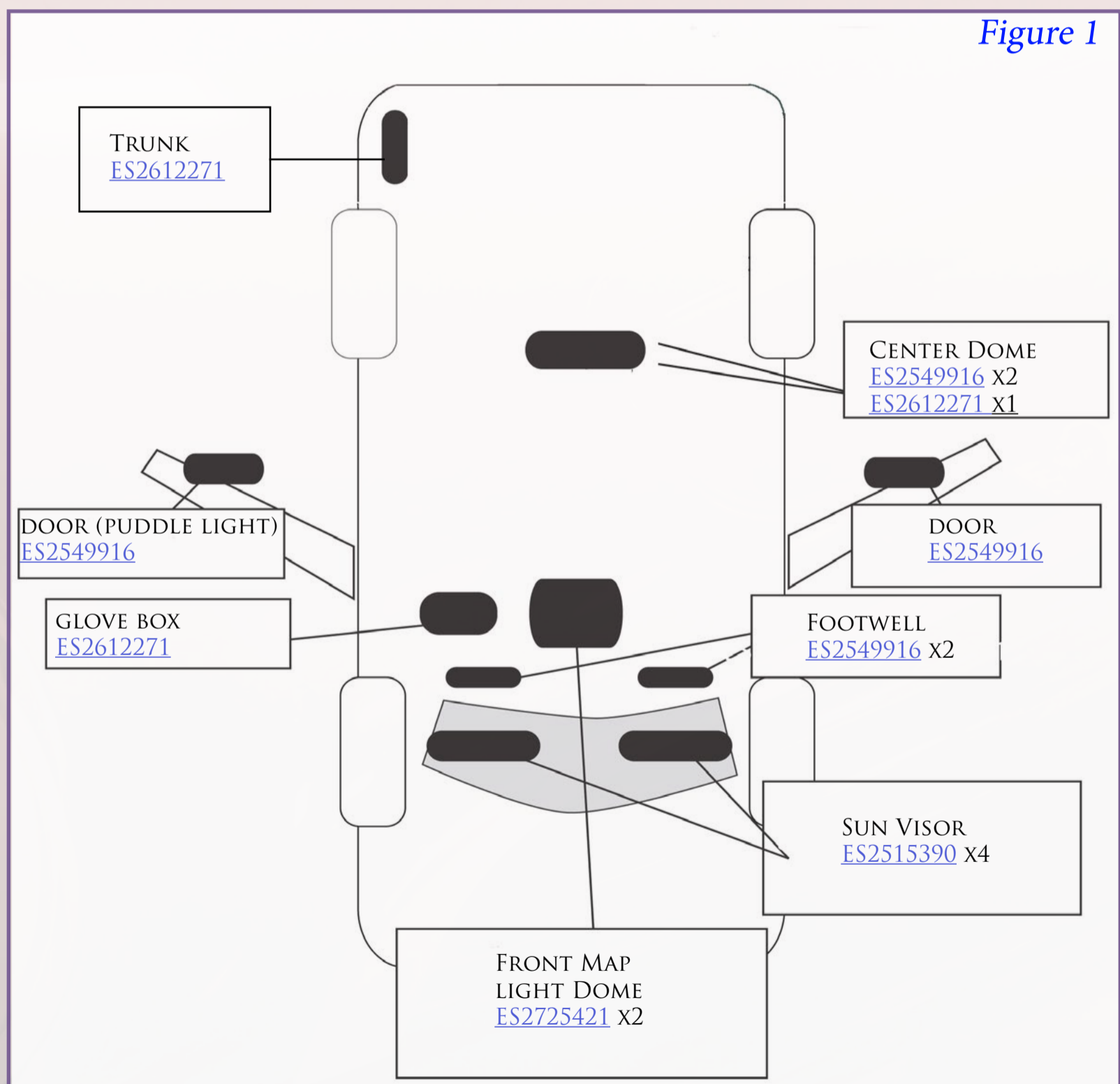


Figure 1 above details the location, type, and size of the LED you will install.

Three distinct LED lights will be used throughout the entirety of the project. ECS Tuning (ES) part numbers are on the back of the LED packaging for identification. In the event that the parts become confused outside of their packaging, visually identify the LED using the pictures below.

36MM WHITE LED FESTOON
ES2612271
TRUNK, GLOVEBOX, CENTER DOME



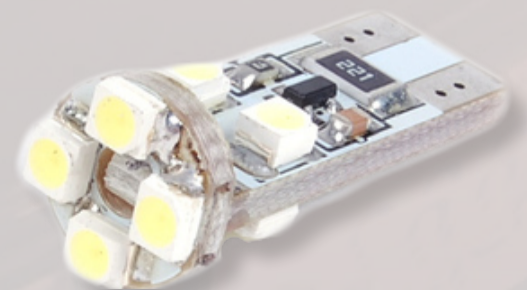
SUB-MINIATURE WEDGE
ES2515390
SUN VISOR



T10 6 LED ROUND WEDGE
ES2725421
FRONT MAP LIGHT DOME



T10 BASE COOL WHITE 8 CHIP
ES2549916
FOOTWELL, DOORS, CENTER DOME



Beginning with the passenger side visor, and proceeding to the rear of the vehicle, we will replace each incandescent bulb with its LED counterpart. Each region of the car requires a different procedure; take caution to assess each bulb replacement on an individual basis.

The first visor bulb housing will free itself from the car using a light prying force on the left clear plastic cover.



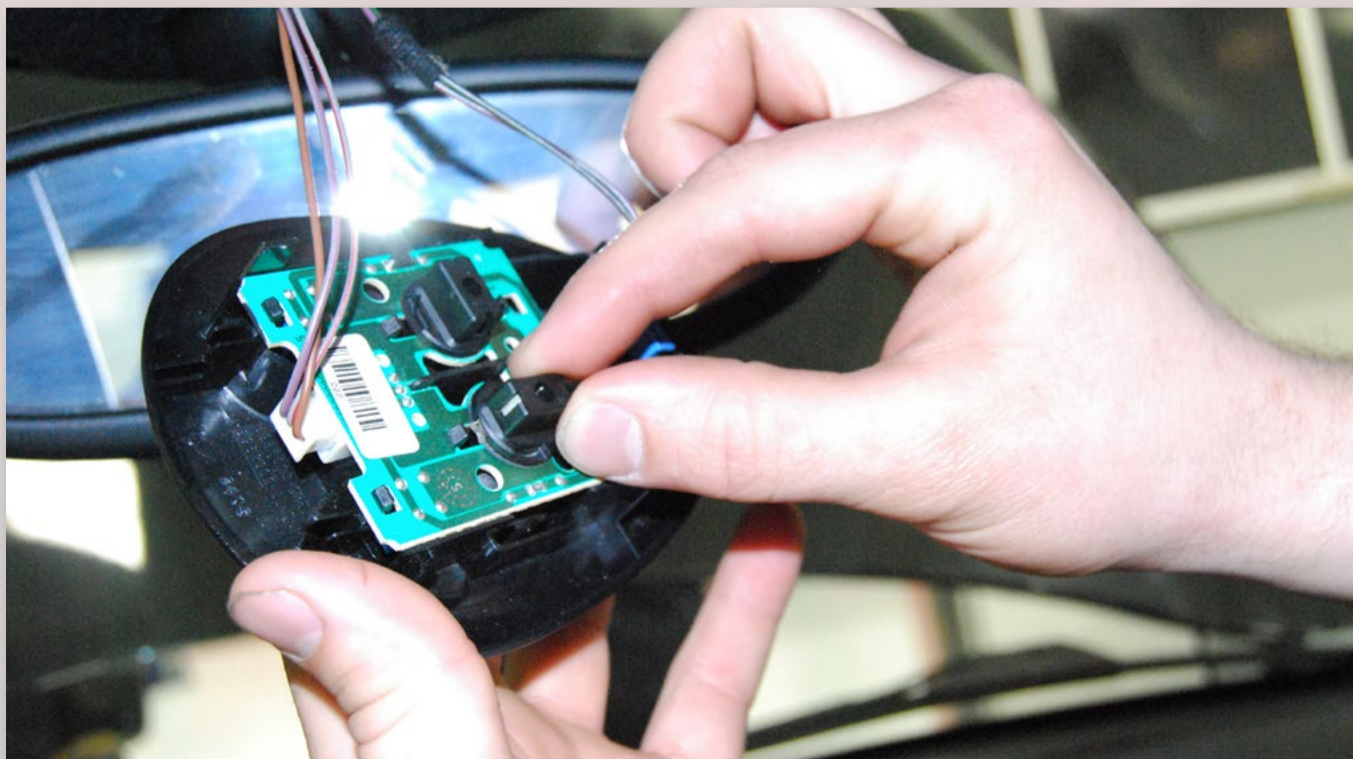
Using moderate force, pull out the incandescent bulb from its housing. Extra effort may be required for your particular vehicle. Once the bulb is removed, take the Sun Visor LED and insert it into the flat tabs, securing it against the base of the housing. These lights are polar sensitive; test the function of the light - if it does not illuminate while the adjacent bulb does, simply remove the bulb and rotate it 180 degrees and reinsert.



Moving on to the front overhead map light dome, careful prying force is required to remove the black bulb housing from the interior trim.



Once the bulb assembly itself is dangling in front of you, take note of two black knobs that house the bulbs. Twist the knob to the left 1/4 turn and the bulb will back out easily. Holding the black tab in one hand, pull outwards while slightly wiggling the bulb. The bulb is strong and will not break when pulling hard on it. Once the bulb is removed, slide the Front Dome LED into the bracket where the incandescent bulb sat - this may take moderate effort.



These bulbs are polar sensitive. It is not necessary to read the bulb or bulb housing to determine polarity. Install the LED and check for it to illuminate, making sure the light is switched to 'on'. If it does not illuminate, remove the light and rotate it 180 degrees, and reinstall. The bulb will now illuminate.



Press back into place the front map light housing. Then press the new, LED-lit bulb housing back into its original place.



The footwell lights are located in the underdash panel, above the front seat footwells.

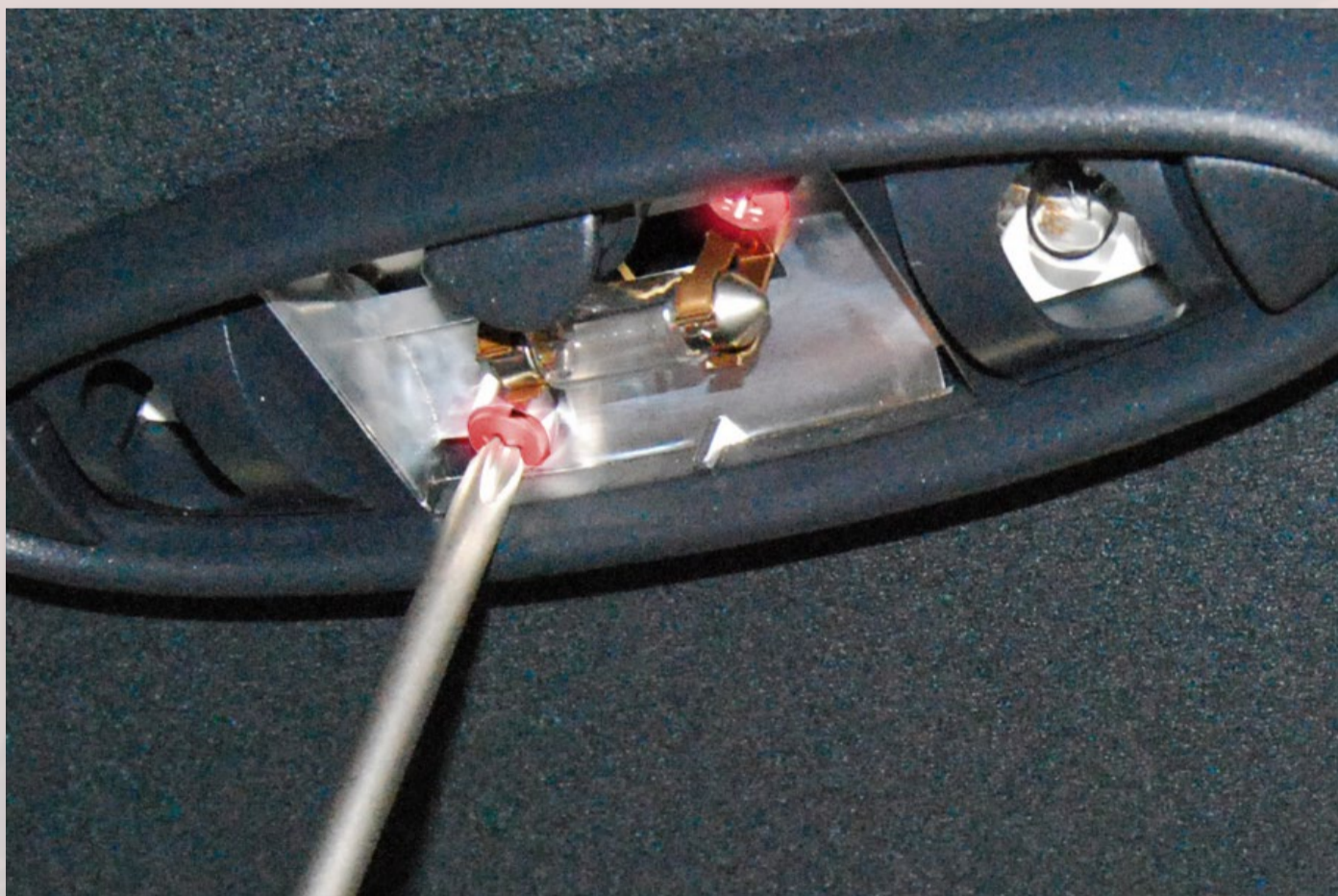
Using the trim removal tool, pry down at the notched end of the footwell lights to remove them.

Pull the old wedge base glass bulb from the bulb socket and push in the T-10 8-chip LED.

The LED array is polarity sensitive. If it does not work when initially installed and tested, remove and rotate it 180 degrees in its socket to get it working.

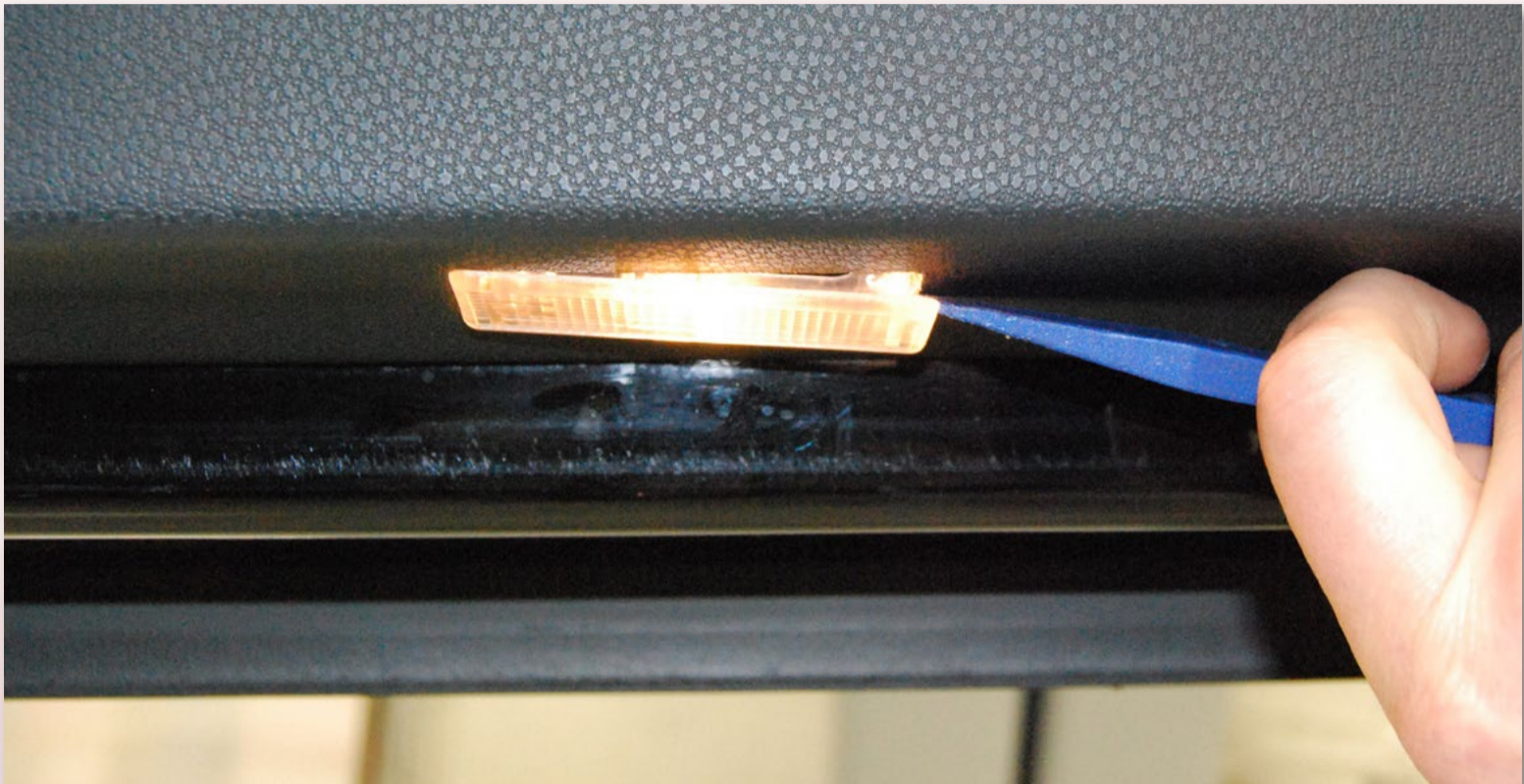


The rear overhead dome lights are replaced in two steps. Firstly, a clear bulb cover must be removed using the non-marring tool. Secondly, two phillips head screws must be removed to dislodge the black bulb housing.



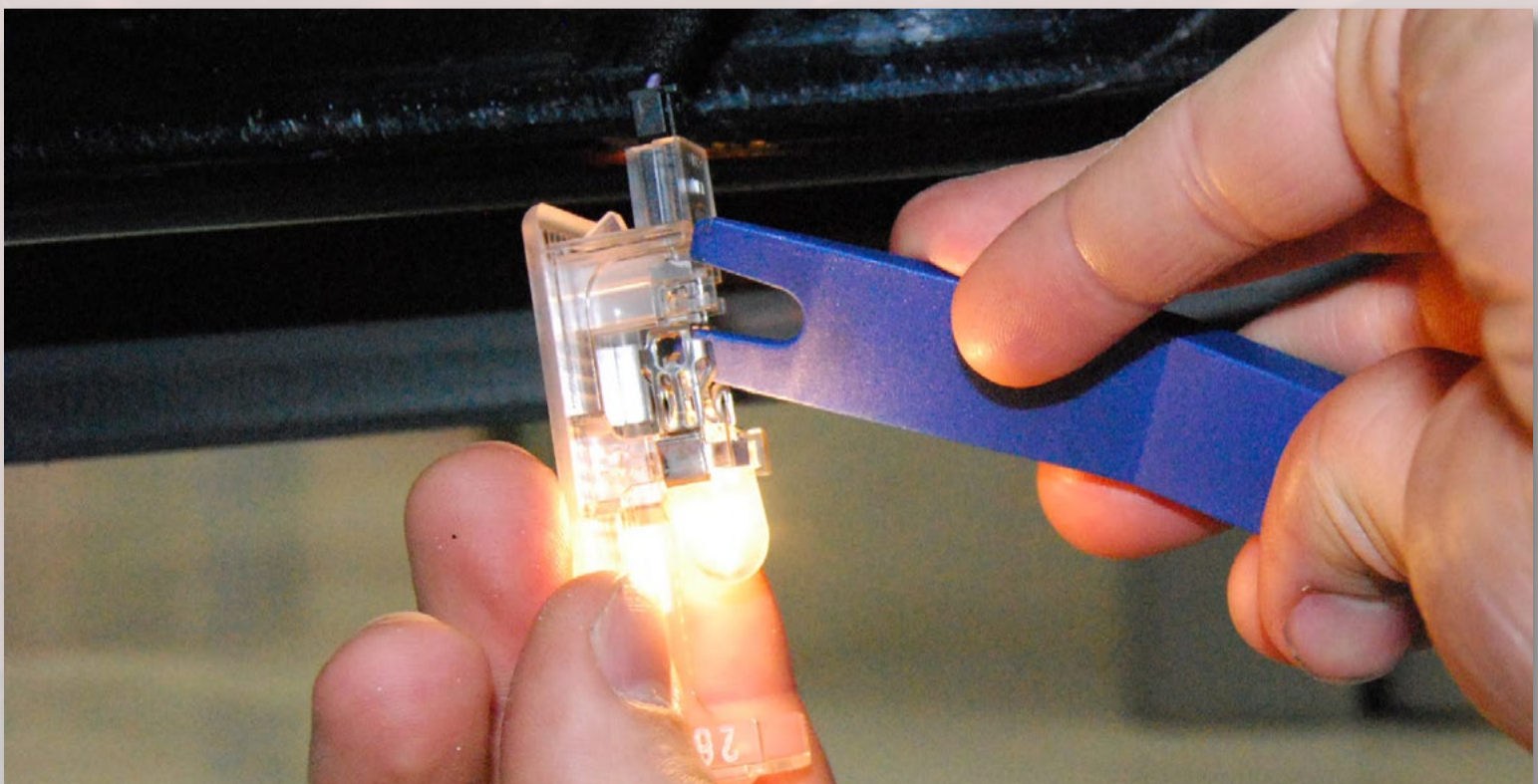
[illegible]

Locate the puddle light housing under the doors. There is a small tab cut out of one side of the housing; this indicates where to place your non-marring tool to pry up the bulb.

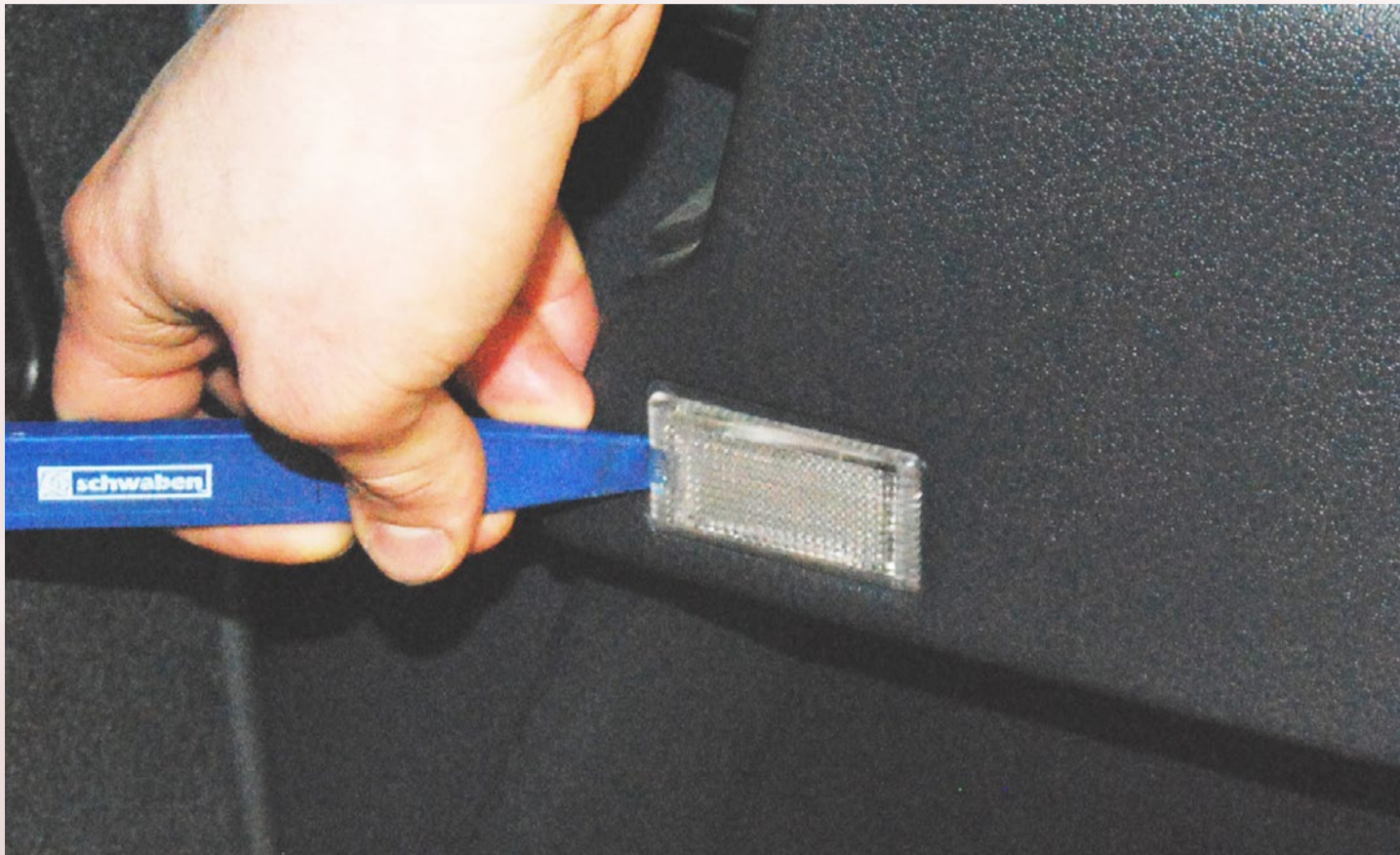


The bulb housing will slide out of the door and dangle with its connector clip. Carefully, using a tool if the bulb is hot or hard to access, pry out the existing bulb. Replace with the T10 Door LED. Repeat on opposite side.

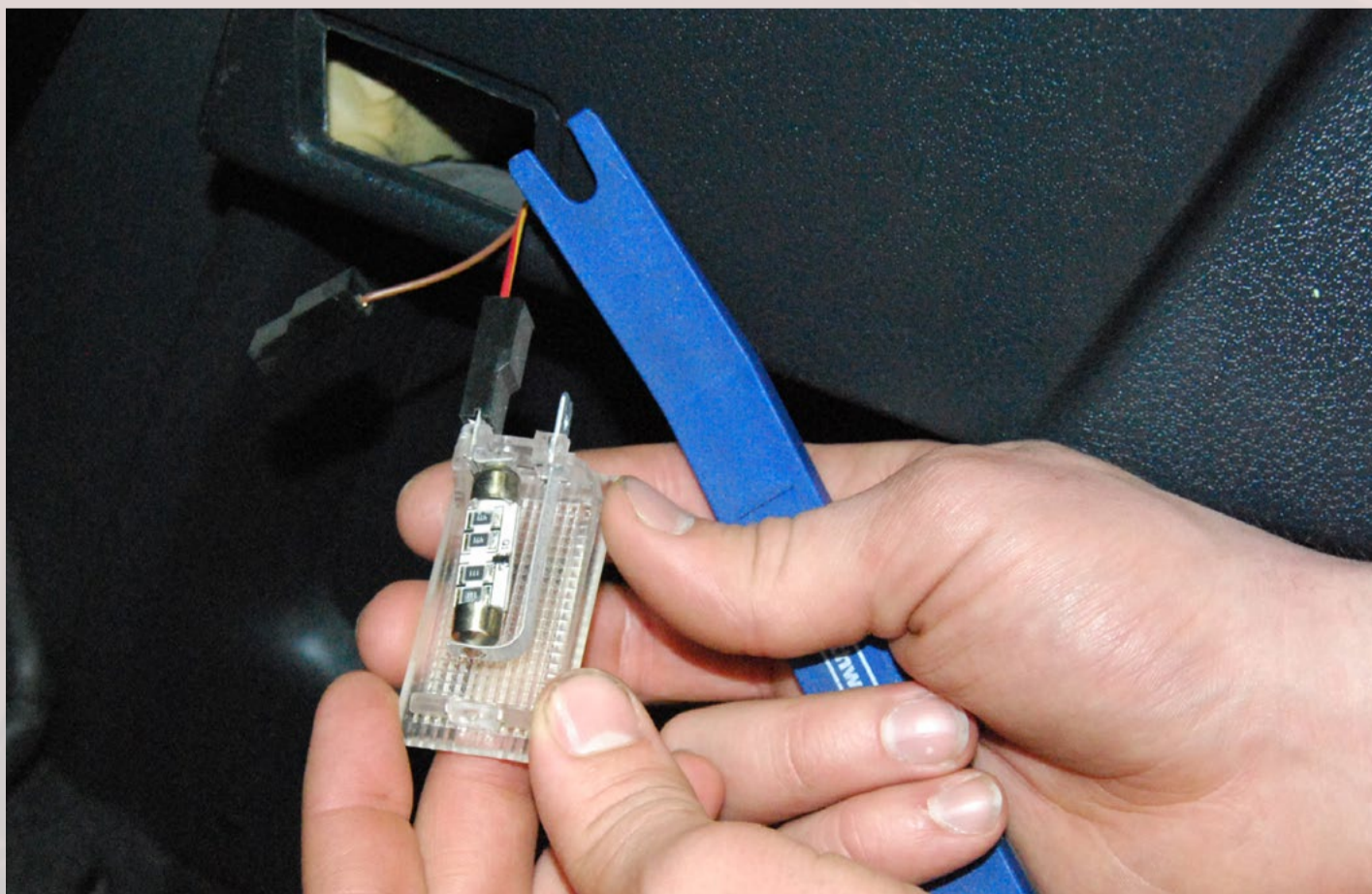
NOTE: The LED chips must be facing towards the clear plastic covering for the light to shine through the correct direction out of the door.



The trunk light assembly removal is similar to the puddle light removal process. Locate the indented tab and pry up this side of the lens. The unit will dislodge and expose the light.



Insert the new LED light between the metal contact points.



Moving to the glovebox assembly, pry out the housing from the right side. A large unit containing the glovebox light switch will dislodge from the car. Locate the incandescent bulb and pry it out using moderate effort with a tool.



Replace with the 36mm Festoon LED and reinstall the housing.



ONCE YOUR FULL SET OF LED'S ARE INSTALLED, TURN THE IGNITION TO THE SECOND POSITION AND RE-INSPECT EACH BULB LOCATION MAKING SURE THERE IS NO LIGHT FLICKERING.

YOUR NEWLY INSTALLED ZIZA LEDs WILL EMIT A WHITER LIGHT, RUN COOLER, AND LAST LONGER!

