



Installation Procedures



Part Number [ES2602930](#)
for MINI Cooper
R55 8.2010+

This tutorial is provided as a courtesy by ECS Tuning.

Proper service and repair procedures are vital to the safe, reliable operation of all motor vehicles as well as the personal safety of those performing the repairs. Standard safety procedures and precautions (including use of safety goggles and proper tools and equipment) should be followed at all times to eliminate the possibility of personal injury or improper service which could damage the vehicle or compromise its safety.

Although this material has been prepared with the intent to provide reliable information, no warranty (express or implied) is made as to its accuracy or completeness. Neither is any liability assumed for loss or damage resulting from reliance on this material. SPECIFICALLY, NO WARRANTY OF MERCHANTABILITY, FITNESS FOR A PARTICULAR PURPOSE OR ANY OTHER WARRANTY IS MADE OR TO BE IMPLIED WITH RESPECT TO THIS MATERIAL. In no event will ECS Tuning, Incorporated or its affiliates be liable for any damages, direct or indirect, consequential or compensatory, arising out of the use of this material.

Ziza Interior Lighting Package Installation

ES2602930



Fits MINI Cooper R55 8.2010+

LED Installation Instructions

Interior Lighting Kit for MINI Cooper 8.2010+
ES2602930



Ziza
performance automotive lighting

Tools

Trim removal tool – ES517779 (Kit)
T15 and T20 Torx® Driver

Kit Contents

5-chip wedge base white LED (qty 6)
8-chip wedge base white LED (qty 5)
36mm white LED festoon (qty 1)

This tutorial explains how to install the LEDs in your Ziza Interior Lighting Kit.



Make the job easier and prevent damage to headliners and other interior trim with **ECS Tuning Trim and Molding Removal Tool Sets: [ES2500877](#) and [ES517779](#).**

What are LEDs?

LEDs are Light Emitting Diodes, solid state devices that emit light when connected to electrical current. They have no moving parts or wire filaments to burn out. They emit a whiter light, run cooler, and last longer than the incandescent (filament style bulbs) we are replacing in this tutorial.

Unlike filament bulbs, LEDs are polarity sensitive. They have plus and minus (positive and negative) electrical terminals that must match the polarity of the applied voltage. Installing the bulbs “backwards” in the light bulb sockets (with reversed polarity) will not harm them, but they will not light. Flipping the bulb 180 degrees in the electrical connector cures this problem.

Bulb Types

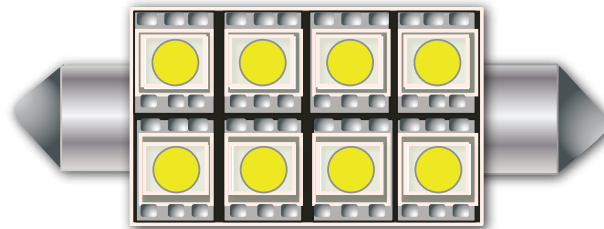
This kit includes three bulb types, classified by their general shape.

FESTOON - Conventional incandescent **festoon** bulbs have a shape and general appearance that is similar to a glass fuse.

Metal caps attached to both ends of a glass tube are sealed to the tube and attached to the bulb filament. End caps mount the bulb in its holder and also conduct electrical current.

LED festoon lights have the same pointed end caps, but are attached to a bank of LEDs instead of a filament tube.

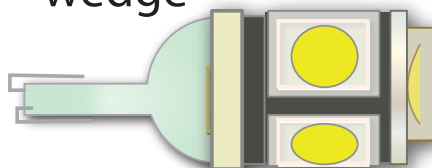
festoon



WEDGE - Wedge style bulbs get their name from the shape of the bulb base. The tapered end of the bulb “wedges” into the bulb socket.

LED wedge lights fit the bulb socket like a filament bulb, but are polarity sensitive.

wedge



Ziza Interior Lighting Package Installation

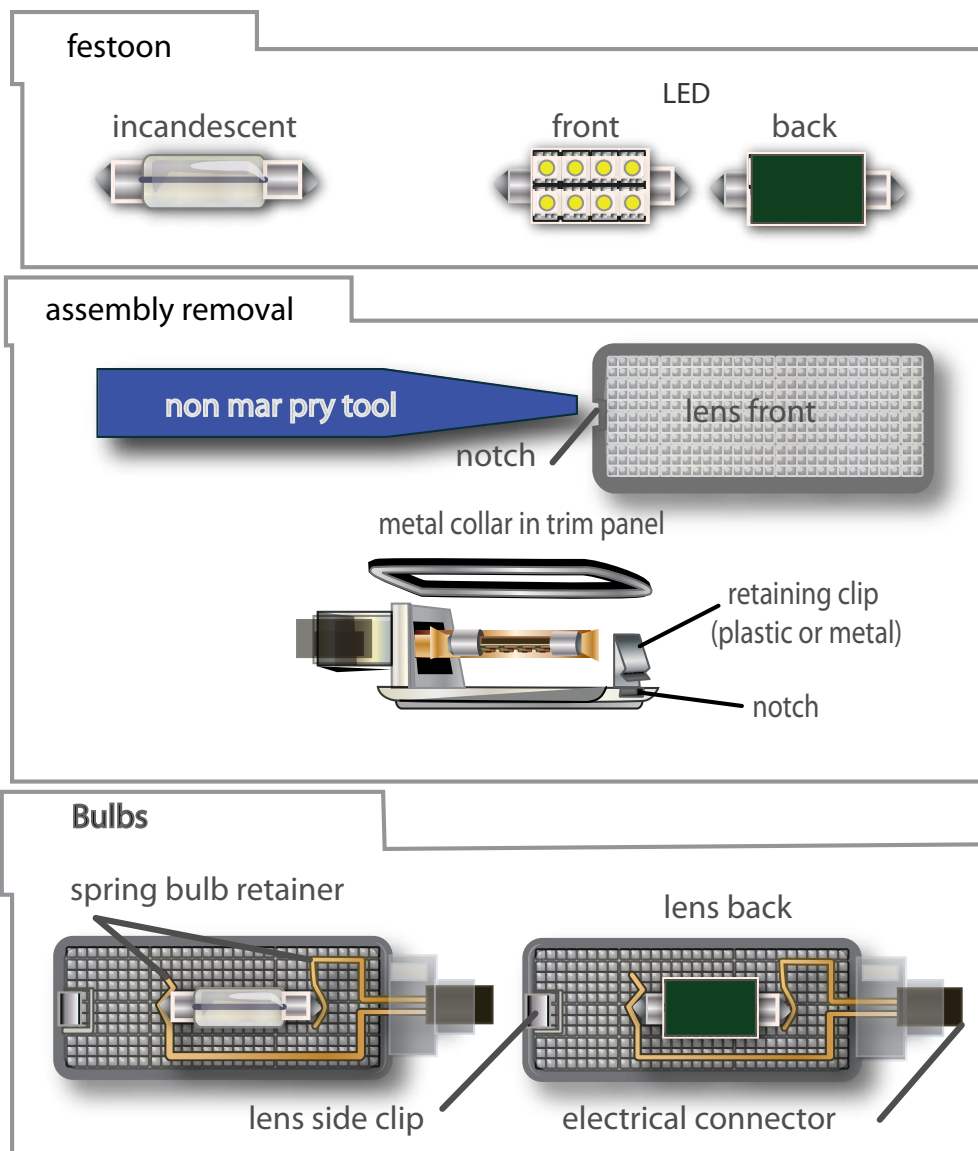
ES2602930



Fits MINI Cooper R55 8.2010+

General Tips

- When prying down on the assemblies to remove them, pry on the notched end of the lens. Insert the narrow tool tip **between** the lens plastic and any metal collar used to reinforce the lens mounting hole. Push in on the retaining clip first to compress and release it. Then pry down.
- The spring bulb retainer is also the circuit conductor. If necessary, gently bend the metal retainer so it holds the bulb tight. This will help prevent intermittent or flickering LED operation caused by a loose connection.
- Install the bulbs with the LEDs facing toward the lens.



Ziza Interior Lighting Package Installation

ES2602930



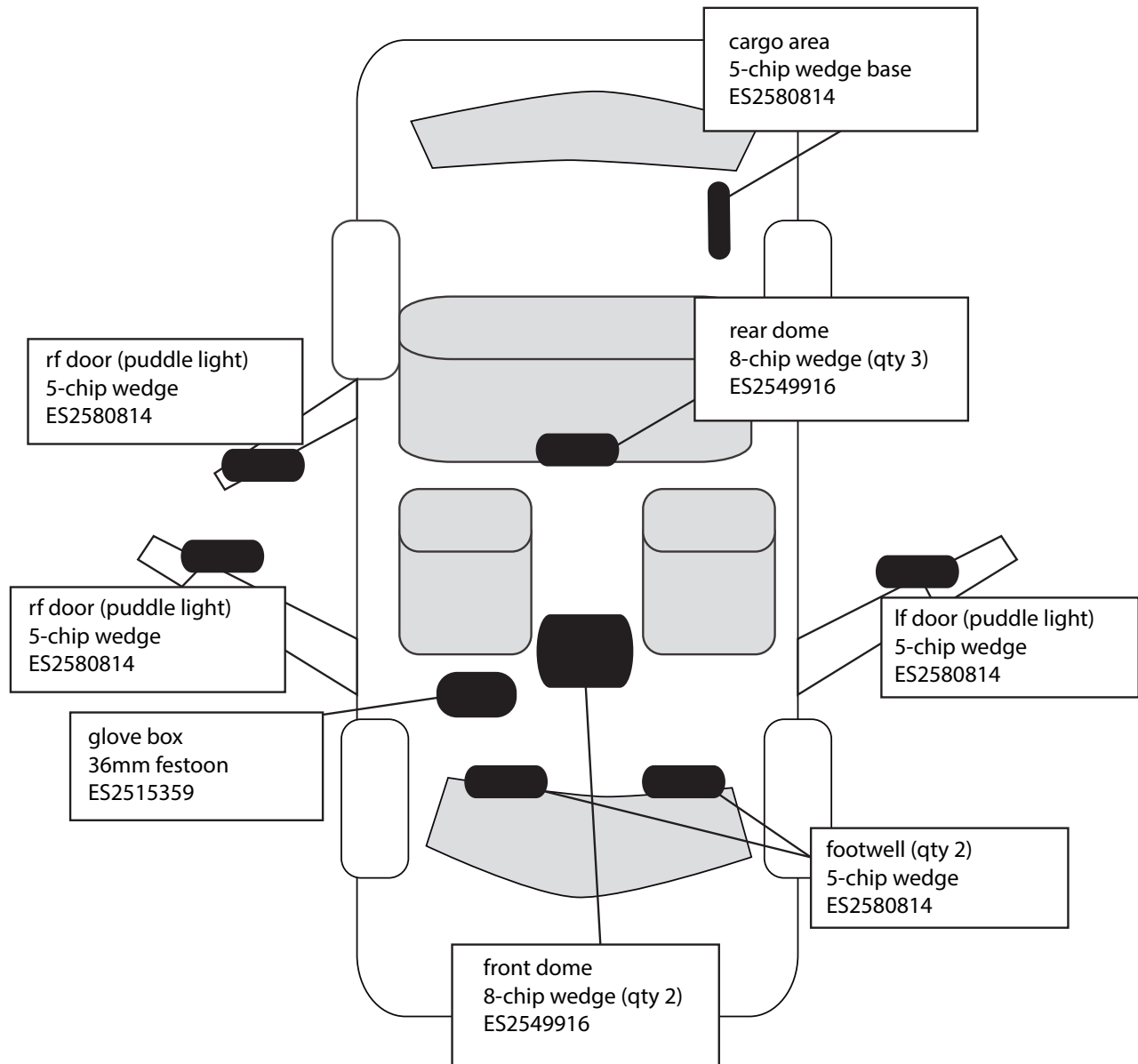
Fits MINI Cooper R55 8.2010+

Ziza Interior Lighting Kit Locations

Make _____ MINI Cooper _____

Model _____ R55_8.2010+ _____

Kit Part Number _____ ES2602930 _____



Ziza Interior Lighting Package Installation

ES2602930



Fits MINI Cooper R55 8.2010+

Front Dome Light LED Installation



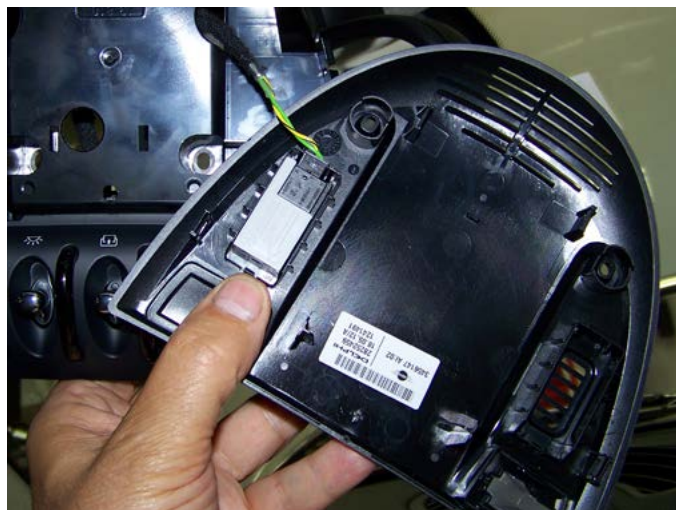
Front Map - Step 1

Pry down on the rear of the dome light console trim cover to release and remove it. Pry between the cover and light fixture base, not between the light fixture base and headliner.



Front Map - Step 2

Note: On models equipped with the feature, disconnect the bluetooth speaker before removing the cover completely.



Ziza Interior Lighting Package Installation

ES2602930



Fits MINI Cooper R55 8.2010+

Front Map - Step 3

Using a T20 Torx® driver, remove the two screws holding the map light console in the headliner.

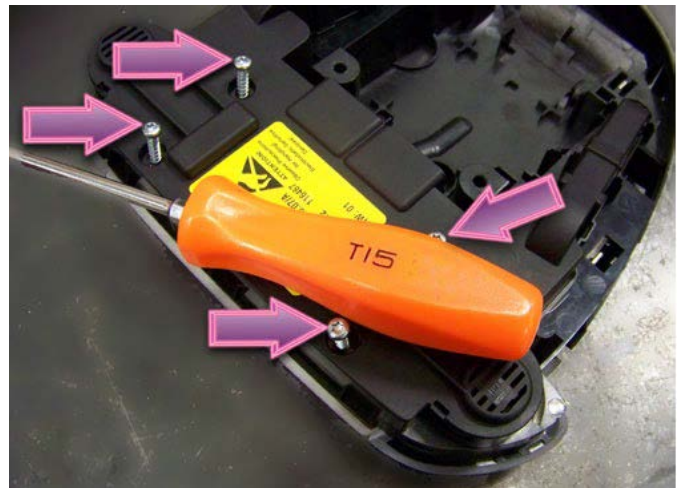
Compress the plastic spring clips at the assembly perimeter and drop the console down.

Disconnect the electrical connectors and take the light assembly to a clean work surface.



Front Map - Step 4

Using a T15 Torx driver, remove the four screws (arrows) from the rear console cover.



Front Map - Step 5

Lift and remove the rear console cover. The cover is also held in place by several plastic clips. Pry carefully to release all clips without breaking them.

Lift the rear cover off.

Caution: Do NOT tip the lower housing upside down while the circuit board is removed or the plastic *switch pivot pieces will fall out*.



Ziza Interior Lighting Package Installation

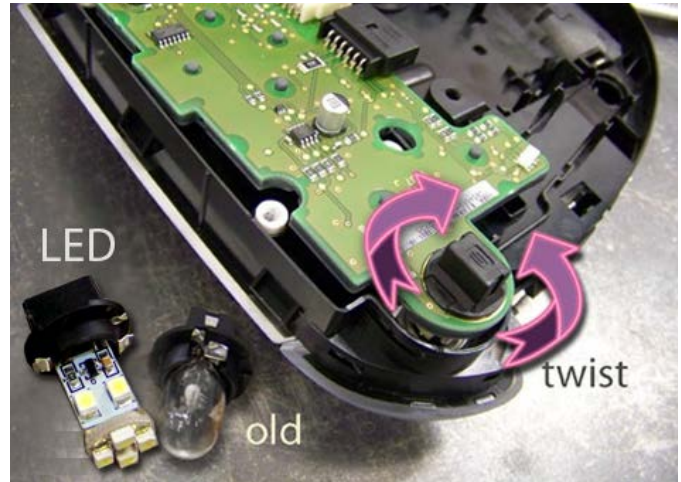
ES2602930



Fits MINI Cooper R55 8.2010+

Front Map - Step 6

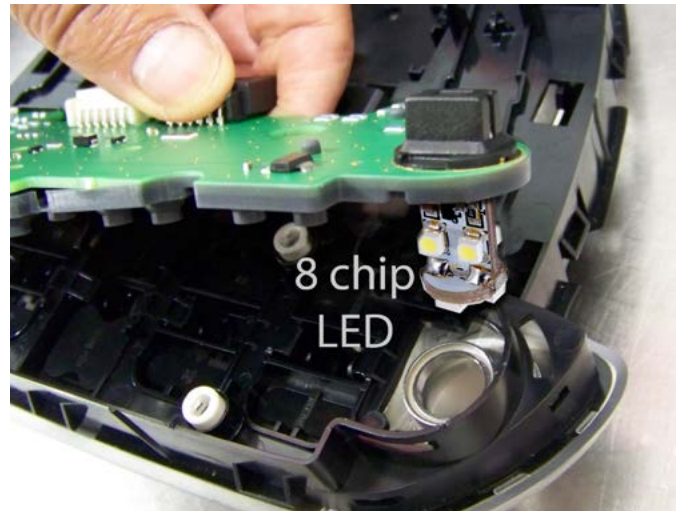
- Twist and remove the bulb holders from the backside of the console.
- Replace the old glass bulbs with 8-chip LEDs.
- Insert the bulb holders into the bulb sockets and twist to lock them in place.



Front Map - Step 7

Test the LEDs: Lift the bulb socket circuit board from the light housing and temporarily plug in the electrical connectors at the headliner opening.

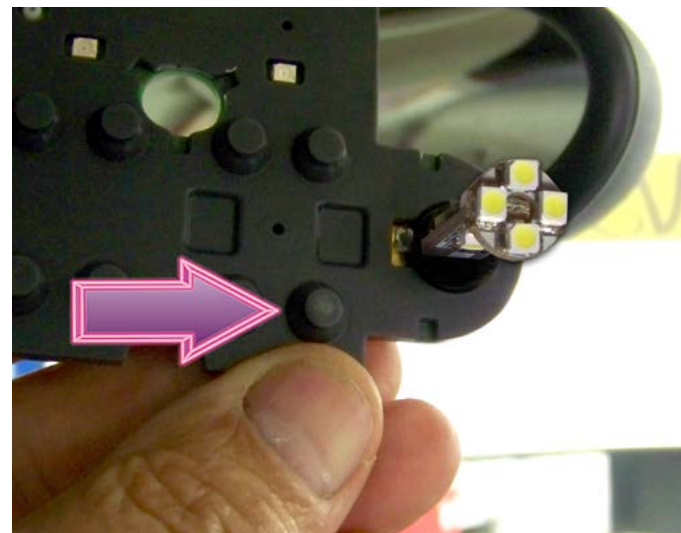
Caution: Do NOT tip the lower housing upside down while the circuit board is removed or the plastic **switch pivot pieces will fall out**. Leave the housing sitting with the green side up, as shown, as you lift off the circuit board.



Front Map - Step 8

With the circuit board harness plugged in, press on the raised rubber nub (arrow) to activate the switch and test the LEDs.

If either LED does not work when tested, remove the bulb holder and rotate it 180 degrees to get it working.



Ziza Interior Lighting Package Installation

ES2602930



Fits MINI Cooper R55 8.2010+

Front Map - Step 9

- Reinstall the circuit board in the housing.
- Reinstall the rear cover and the screws removed earlier.



Front Map - Step 10

Reconnect the wiring.

Note: On cars with the bluetooth microphone, be sure to route the wire harness through the opening in the housing so it can be reconnected to the microphone in the trim panel.

Reinstall the light housing and replace the two screws removed earlier (arrows).



Front Map - Step 11

If equipped with the feature, reconnect the bluetooth microphone electrical connector.

Snap the dome light trim panel back in place to complete the front dome light installation.



Ziza Interior Lighting Package Installation

ES2602930



Fits MINI Cooper R55 8.2010+

Rear Dome Light LED Installation



Rear Dome - Step 1

Insert the trim tool at the side of the rear dome light and pry down to remove the assembly.

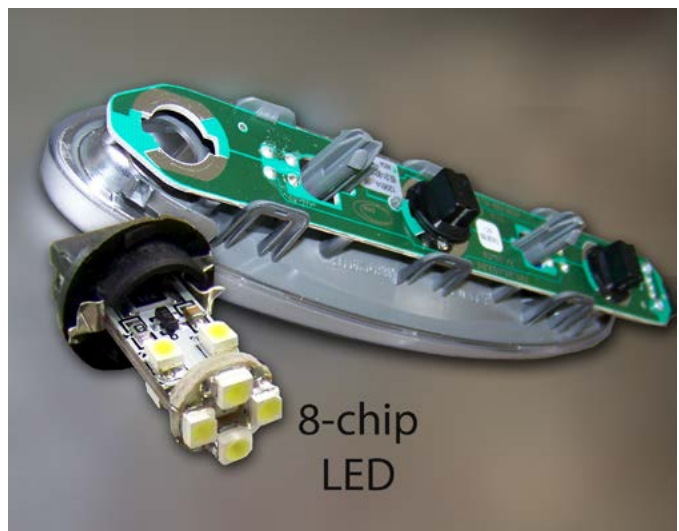


Rear Dome - Step 2

Replace the original glass wedge base bulbs with 8-chip wedge base LEDs.

If any LED fails to light when initially tested, remove and rotate the bulb holder 180 degrees in the socket.

Pop the light assembly back into the headliner.



Ziza Interior Lighting Package Installation

ES2602930



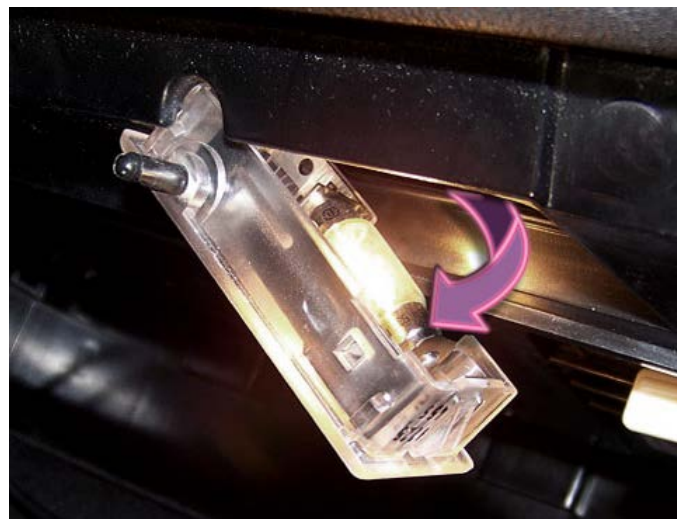
Fits MINI Cooper R55 8.2010+

Glove Box Light LED Installation



Glove Box - Step 1

Pry on the notched side of the glove box light and pivot the assembly down and out.



Glove Box - Step 2

Replace the original glass bulb with a 36mm festoon LED array.

The LED chips should face toward the lens.

Snap the glove box light back in place to complete the glove box LED installation.



Puddle Light LED Installation



Puddle Lamps - Step 1

Pry down on the notched end of the puddle lamp light assemblies in the door bottoms to remove them.

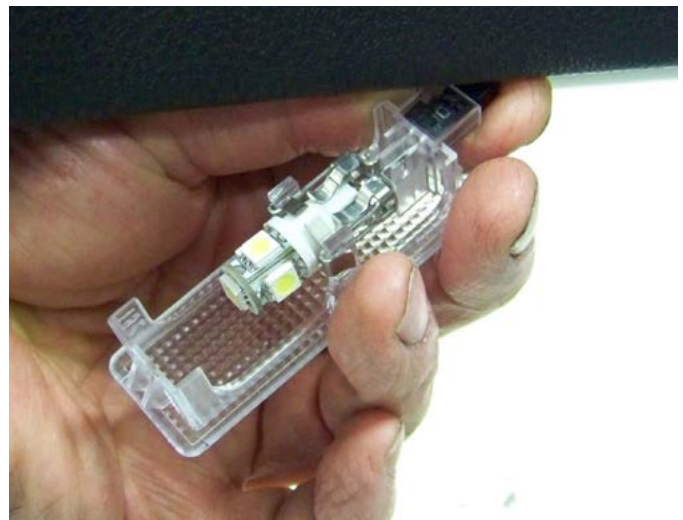


Puddle Lamps - Step 2

Replace the original glass filament bulb with a 5-chip LED wedge base array.

The LED array is polarity sensitive. If it does not work when initially installed, flip it 180 degrees in the bulb holder to get it working.

Repeat the process at the remaining doors.



Footwell Light LED Installation



Footwell Lamps - Step 1

Use a trim removal tool to pry down and remove the puddle lamps from the underdash area above the left and right footwells.

(You may also be able to reach up behind the back edge of the lower dash as we are doing here, and push down with your fingers to remove them.)



Footwell Lamps - Step 2

Twist and remove the black bulb holder to remove it from the bulb fixture. Pull out the old glass bulb, and insert a new 5-chip LED.

If the LED does not light initially when tested, remove and rotate it 180 degrees in its the bulb holder socket to get it working.



Ziza Interior Lighting Package Installation

ES2602930



Fits MINI Cooper R55 8.2010+

Rear Cargo Light - Step 1

The rear cargo light is easy to install once you know the trick to doing it. The light is more difficult than most to pry out because it sits in a deep rectangular opening in the black grille.

Do not remove the entire grille, or you'll probably end up gluing it back into the carpeted quarter panel liner.

Instead, use the tip in the next photo caption and you'll be done in minutes.



Rear Cargo Light - Step 2

Note: We've removed the grille assembly so you can see the rear of the light assembly.

Using a hooked Allen key (or similarly shaped tool or heavy wire with a hooked end), reach through the grille opening next to the light, and **pull** the light assembly out of the grille. Pivot the light out of the grille.

Remove the old glass bulb and insert a 5-chip LED in its place.



Rear Cargo Light - Step 3

Here's a view from the front.

The 5-chip LEDs are polarity sensitive. If the new LED doesn't work when tested initially, remove and rotate it 180 degrees in the wedge base socket to get it working.

When the light is working, insert the end with the wire connector into the opening and pivot the light until it snaps in place in the grille.



Ziza Interior Lighting Package Installation

ES2602930



This concludes the installation of the Ziza Interior Light Kit.



Prevent damage to interior panels, the headliner, and trim.
Use a plastic, non-marring trim removal tool.
Two complete kits are available.

Make the job easier and prevent damage to headliners and other interior trim with ECS Tuning Trim and Molding Removal Tool Sets: [ES2500877](#) and [ES517779](#).