



## Installation Procedures

### European Headlight Switch Installation with Rear Fog Light MKVI Golf

This tutorial is provided as a courtesy by ECS Tuning.

Proper service and repair procedures are vital to the safe, reliable operation of all motor vehicles as well as the personal safety of those performing the repairs. Standard safety procedures and precautions (including use of safety goggles and proper tools and equipment) should be followed at all times to eliminate the possibility of personal injury or improper service which could damage the vehicle or compromise its safety.

Although this material has been prepared with the intent to provide reliable information, no warranty (express or implied) is made as to its accuracy or completeness. Neither is any liability assumed for loss or damage resulting from reliance on this material. SPECIFICALLY, NO WARRANTY OF MERCHANTABILITY, FITNESS FOR A PARTICULAR PURPOSE OR ANY OTHER WARRANTY IS MADE OR TO BE IMPLIED WITH RESPECT TO THIS MATERIAL. In no event will ECS Tuning, Incorporated or its affiliates be liable for any damages, direct or indirect, consequential or compensatory, arising out of the use of this material.

#### **Safety First**

Conventional wisdom says: Disconnect the battery before doing this repair. Our attorney agrees.

#### **However...**

Disconnecting the battery has a dark side you ought to know about. Doing so erases all volatile memory in your vehicle computer, including driver preferences, antitheft radio code, radio presets and clock, and OBD II emissions data. In some vehicles stored data about electronic throttle control learned positions will also be lost. Affected vehicles will not idle following a power down until throttle position data are restored with a scan tool and the correct vehicle software.

Loss of OBD II data is important if your vehicle is subject to a scan tool emissions test; erasing computer memory resets all OBD II monitors to incomplete, and your vehicle will not pass its emissions test until a drive cycle completes the required number of non-continuous monitors.

#### **Other Cautions**

Work carefully to avoid damaging wires and connectors. Avoid any test procedure that damages wire insulation or creates a short circuit—to voltage, ground, or to another circuit. Failure to follow these and all other safety precautions and approved shop practices can result in costly vehicle damage and serious personal injury.

# European Headlight Switch - Rear Fog Light MKVI Golf

## Preparations

Estimated Installation Time: 2.0 Hour

### Parts Required:

European Headlight Switch  
VW Parking Light Wire

**Note: For rear fog lamps to operate, you must have tail lights with fog lamp features.**

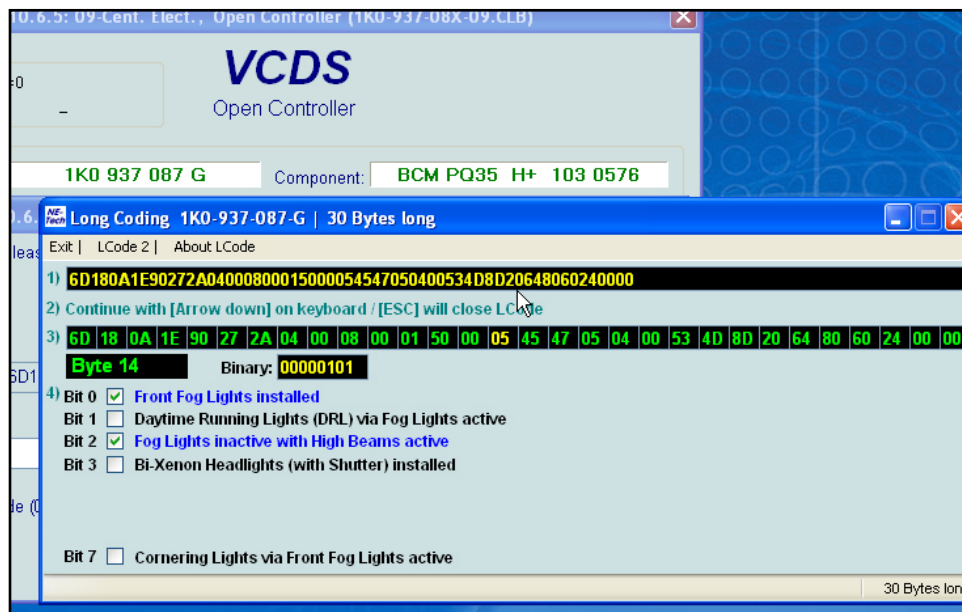
### Tools Required:

VAG-Com/VCDS  
T-20 Torx  
Small angled pick  
Zip ties  
Flashlight/worklight

In this installation, we will demonstrate how to install the Euroswitch headlight control switch and enable rear fog lights. Our vehicle already has R-style tail lights with fog lamps. Installing the Euroswitch and recoding will enable the rear fog lamp function in these lights.

### Steps Include:

- Remove old headlight switch.
- Connect the yellow activation wire between new Euroswitch and CECM wiring.
- Test newly installed light functions.



**Special Note:** To activate the rear fog lamps, the lighting module must be re-coded using the correct software interface. We recommend that you have a qualified VW repair professional re-code the vehicle for you. Improper re-coding can damage control modules.

## European Headlight Switch - Rear Fog Light MKVI Golf

### Step 1.

Remove the old headlight switch.

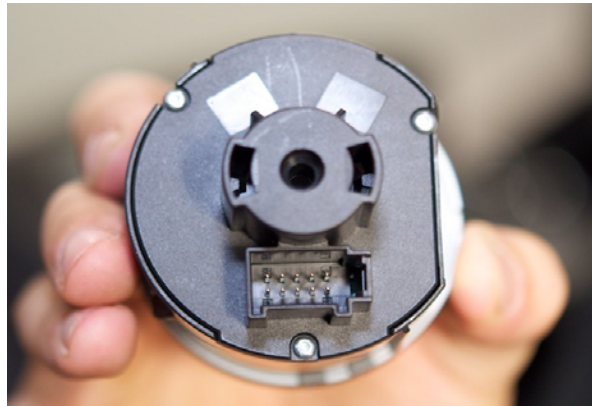
Turn the switch to the O position (off). Press the knob in—and hold it in—while turning the switch knob clockwise several degrees until it stops.

Pull out to remove the entire switch assembly from the dash.



### Step 2.

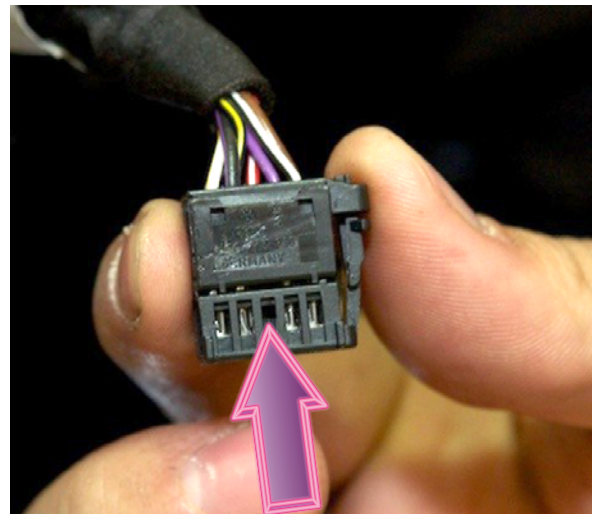
Disconnect the wiring connector from the back of the switch. Remove the old switch and lay it aside.



### Step 3.

Look at the light switch harness connector.

There is an open hole in the connector at pin 3 (arrow). This is where we will install the yellow wire from the Euroswitch kit.



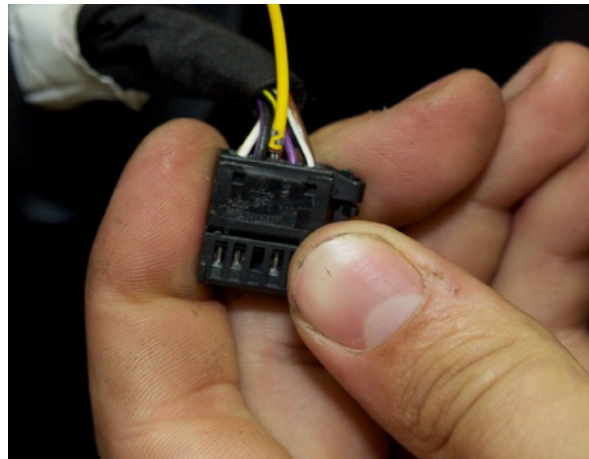
## European Headlight Switch - Rear Fog Light MKVI Golf

### Step 4.

Insert one end of the yellow fog lamp wire into pin 3 of the switch harness connector. Push it in until it snaps in place securely. Give it a tug to make sure it is locked in place.

Route the other end of the wire through the headlight switch hole into the dash.

Reach beneath the dash and pull the wire down toward the firewall. Let it hang for now.



Now we are going under the dash to connect the other end of the yellow wire from the switch connector to the **Central Electronics Control Module (CECM)**. The CECM is located on the underside of the dash, above the pedals.

### Step 5.

Move under the dash. Unbolt the courtesy light (T-20 Torx screw). Unplug it or let it hang for extra light.

This photo shows the CECM. We are looking upward at the underside of the dash. There are three harness connector retainers, and we've highlighted the black one with a green halo to make it more visible.

On the next two pages, we've gathered photos and illustrations to better show how to remove the harness from the CECM.





## European Headlight Switch - Rear Fog Light MKVI Golf

On this page, we connect the yellow wire from the switch to the black harness connector at the CECM.

The black connector retainer plugs into the CECM and is held in place by a white plastic locking lever.

The images on this page show how to disconnect the black connector retainer from the CECM.

1) Push the lock tab on the white locking lever and rotate the lever downward.

2) Pull the black connector retainer from the CECM.

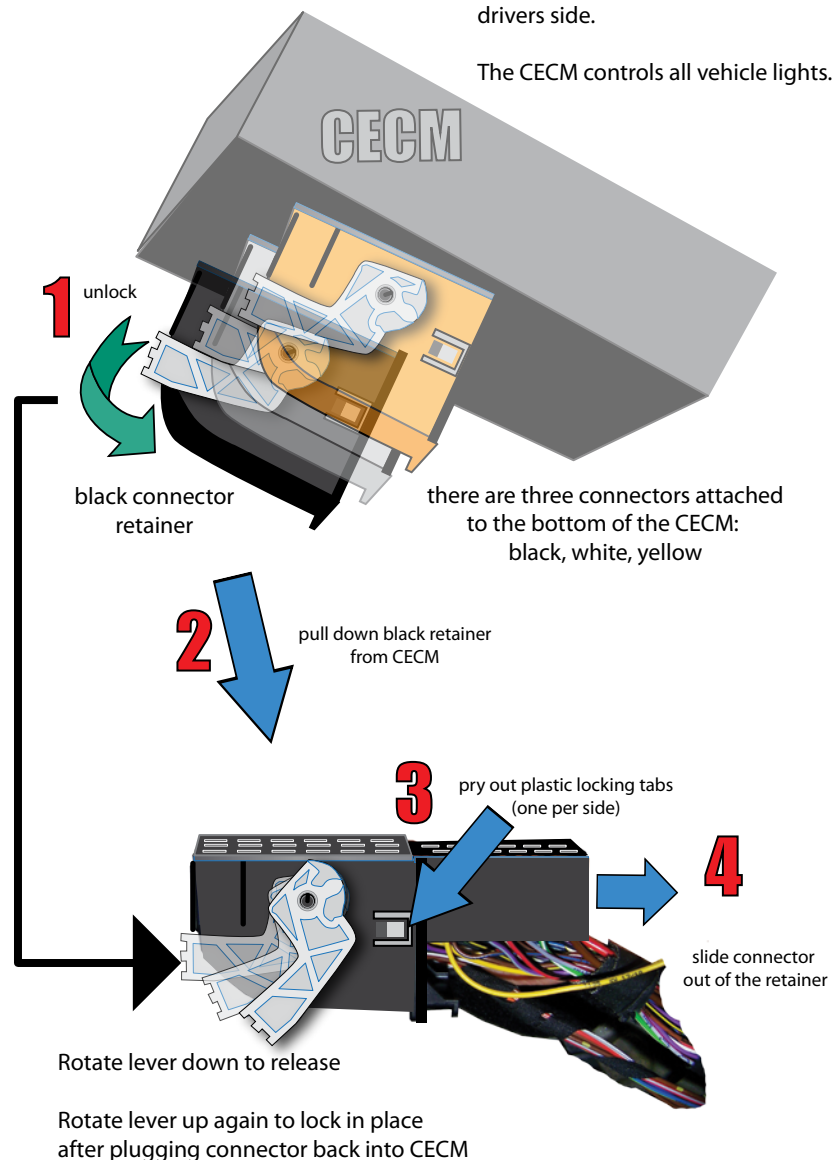
3) Carefully pry on the locking tabs on the sides of the retainer cover.

4) With the lock tabs released, slide the connector out of the connector retainer, as shown in our image.

On the next page, we have shown these steps and included photos for reference.

The Central Electronics Control Module (CECM) is located above the pedals on the drivers side.

The CECM controls all vehicle lights.



## European Headlight Switch - Rear Fog Light MKVI Golf

This page repeats information from the previous page, but adds photos for reference.

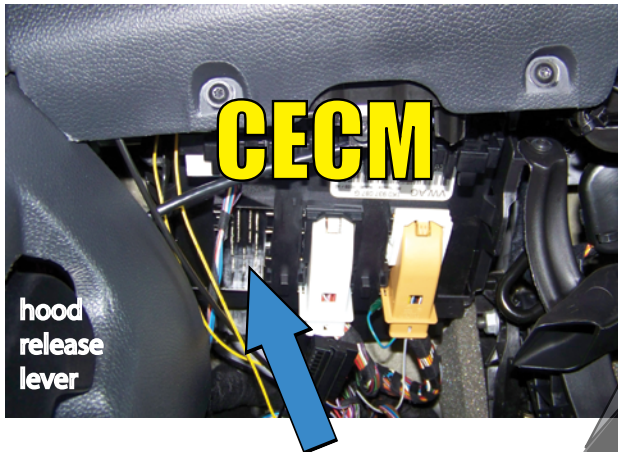
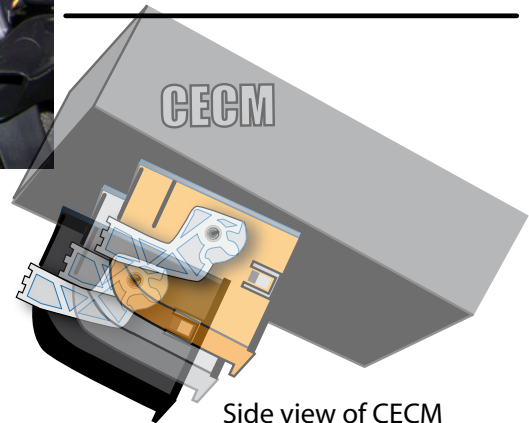


Photo shows CECM installed in dash above pedals.

Black connector already removed from CECM.



Side view of CECM removed (no wires shown)

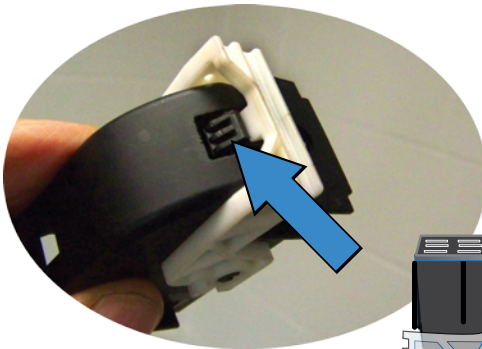


Photo shows release tab for connector retainer lever.



Wire connector

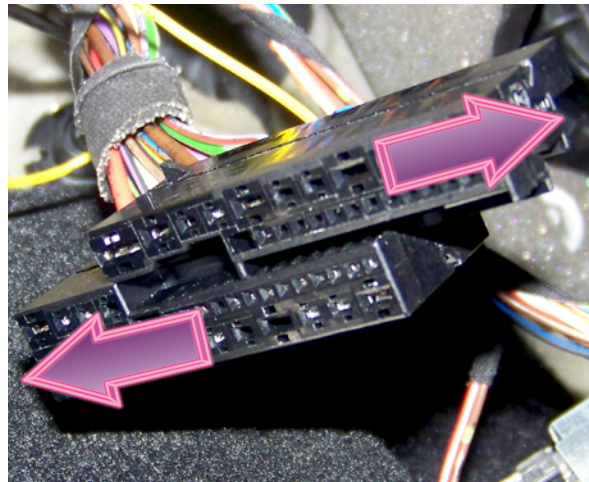
Next, we'll show you how to split the two halves of the wire connector to install the yellow wire we attached to the Euroswitch in Step 4.

## European Headlight Switch - Rear Fog Light MKVI Golf

### Step 6.

At first glance, the black wiring harness connector looks like it is made from a single piece of plastic. In fact, it is made of **two** individual plastic halves that slide together like puzzle pieces.

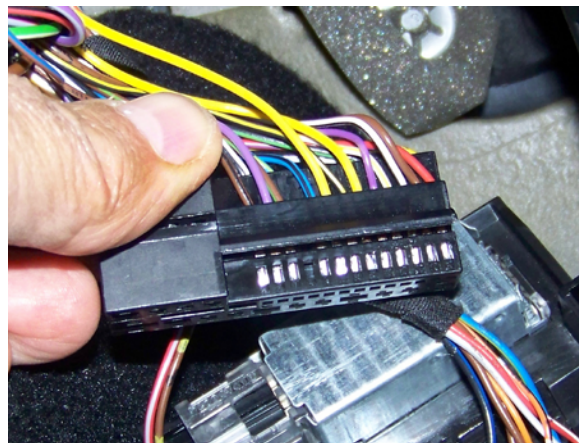
Slide them apart to separate the two pieces.



### Step 7.

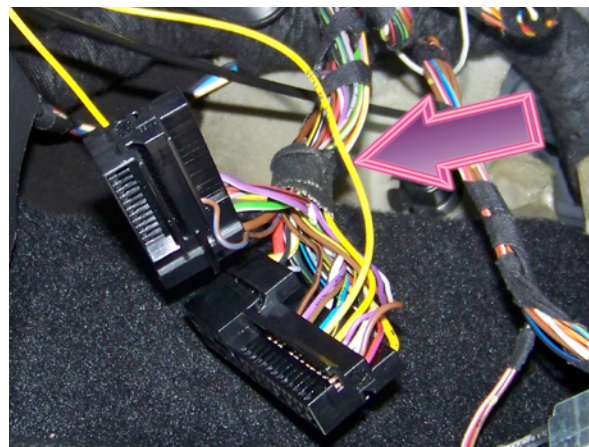
Both connector halves have tiny numbers indicating terminal numbers. We mean TINY, so look close.

With the two connector halves separated, locate **terminal 19**. Insert the other end of the yellow wire from the Euroswitch into the terminal cavity. It will only go in one way, so make sure it is properly aligned. Push it in all the way until it locks in place.



### Step 8.

Yellow wire installed in connector half.



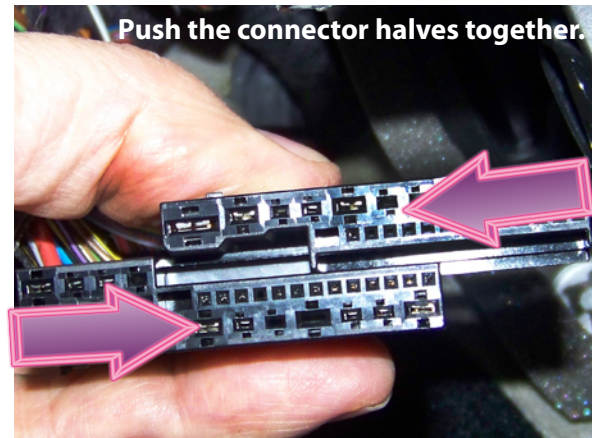


## European Headlight Switch - Rear Fog Light MKVI Golf

### Step 9.

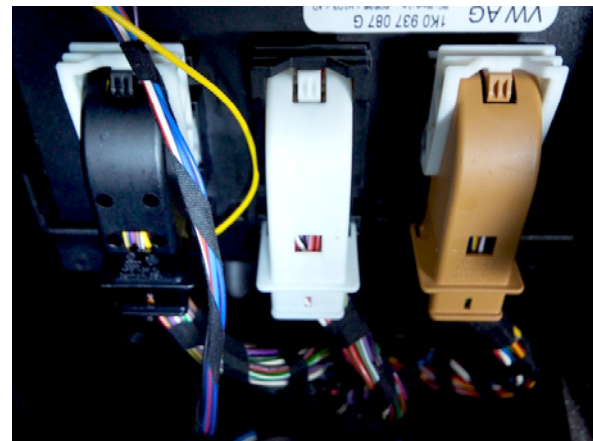
Now reverse your steps.

- Align the connector halves and slide them back together.
- Push them into the connector retainer until the lock tabs lock them in place.



### Step 10.

- Reattach the connector retainer to the CECM. Push the white locking lever to lock the retainer in place.
- Reinstall the courtesy light.
- Make sure the yellow wire is secured to the main harness with a zip tie, and that all wiring is safely routed and secured.



### Step 11.

Reinstall the light switch in the dash. Reverse Step 1 of this tutorial.



## European Headlight Switch - Rear Fog Light MKVI Golf

### Step 12.

If you haven't already done so, re-code the vehicle module to activate the fog lamps.



### Step 13.

Test the fogs. Turn the lights on and pull the switch knob out one click to activate the front fogs; two clicks to activate both front and rear fogs.



### Step 14.

Rear fog lamp (left) and backup light (right) illuminated.

This completes the installation of the Euroswitch and fog lamp activation.

