



Ziz2

Mercedes-Benz W204 Interior Lighting Kit
Installation Tutorial

ECS
TUNING®
ES2730883



THIS TUTORIAL IS PROVIDED AS A COURTESY BY ECS TUNING.

PROPER SERVICE AND REPAIR PROCEDURES ARE VITAL TO THE SAFE, RELIABLE OPERATION OF ALL MOTOR VEHICLES AS WELL AS THE PERSONAL SAFETY OF THOSE PERFORMING THE REPAIRS. STANDARD SAFETY PROCEDURES AND PRECAUTIONS (INCLUDING USE OF SAFETY GOGGLES AND PROPER TOOLS AND EQUIPMENT) SHOULD BE FOLLOWED AT ALL TIMES TO ELIMINATE THE POSSIBILITY OF PERSONAL INJURY OR IMPROPER SERVICE WHICH COULD DAMAGE THE VEHICLE OR COMPROMISE ITS SAFETY.

ALTHOUGH THIS MATERIAL HAS BEEN PREPARED WITH THE INTENT TO PROVIDE RELIABLE INFORMATION, NO WARRANTY (EXPRESS OR IMPLIED) IS MADE AS TO ITS ACCURACY OR COMPLETENESS. NEITHER IS ANY LIABILITY ASSUMED FOR LOSS OR DAMAGE RESULTING FROM RELIANCE ON THIS MATERIAL. SPECIFICALLY, NO WARRANTY OF MERCHANTABILITY, FITNESS FOR A PARTICULAR PURPOSE OR ANY OTHER WARRANTY IS MADE OR TO BE IMPLIED WITH RESPECT TO THIS MATERIAL. IN NO EVENT WILL ECS TUNING, INCORPORATED OR ITS AFFILIATES BE LIABLE FOR ANY DAMAGES, DIRECT OR INDIRECT, CONSEQUENTIAL OR COMPENSATORY, ARISING OUT OF THE USE OF THIS MATERIAL.

What are LEDs?

LEDs are Light Emitting Diodes, solid state devices that emit light when connected to electrical current. They have no moving parts or wire filaments to burn out. They emit a whiter light, run cooler, and last longer than the incandescent (filament style bulbs) we are replacing in this tutorial.

Unlike filament bulbs, LEDs are polarity sensitive. They have plus and minus (positive and negative) electrical terminals that must match the polarity of the applied voltage. Installing the bulbs “backwards” in the light bulb sockets (with reversed polarity) will not harm them, but they will not light. Flipping the bulb 180 degrees in the electrical connector cures this problem.

Bulb Types

This kit includes three bulb types, classified by their general shape.

FESTOON - Conventional incandescent festoon bulbs have a shape and general appearance that is similar to a glass fuse.

Metal caps attached to both ends of a glass tube are sealed to the tube and attached to the bulb filament. End caps mount the bulb in its holder and also conduct electrical current.

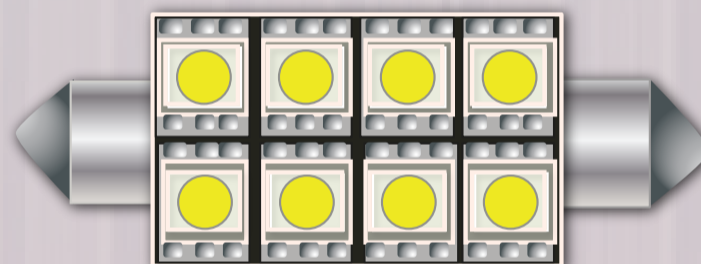
LED festoon lights have the same pointed end caps, but are attached to a bank of LEDs instead of a filament tube.

WEDGE - Wedge style bulbs get their name from the shape of the bulb base. The tapered end of the bulb “wedges” into the bulb socket.

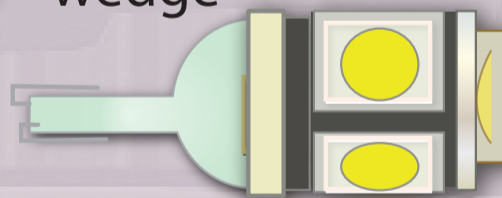
LED wedge lights fit the bulb socket like a filament bulb, but are polarity sensitive.

You will use 15x 8 chip T10 wedges and one 3 chip 42mm festoon for this project.

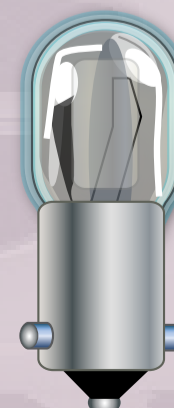
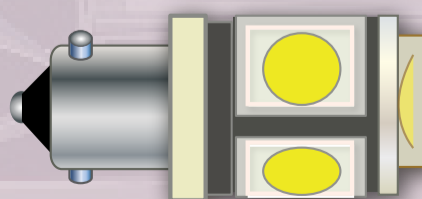
festoon



wedge

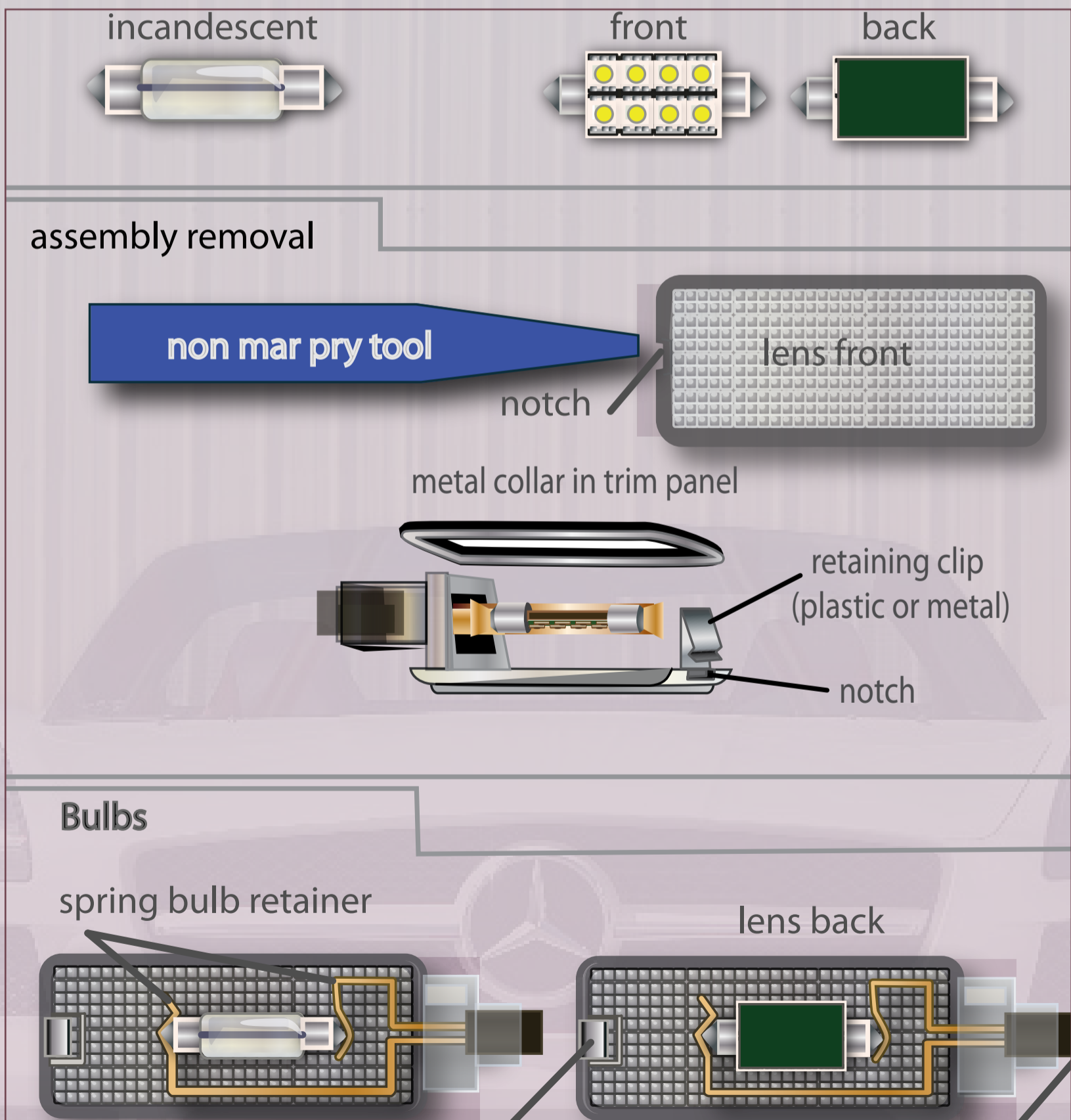


bayonet



General Tips

- When prying down on the assemblies to remove them, pry on the notched end of the lens. Insert the narrow tool tip between the lens plastic and any metal collar used to reinforce the lens mounting hole. Push in on the retaining clip first to compress and release it. Then pry down.
- The spring bulb retainer is also the circuit conductor. If necessary, gently bend the metal retainer so it holds the bulb tight. This will help prevent intermittent or flickering LED operation caused by a loose connection.
- Install the bulbs with the LEDs facing toward the lens.



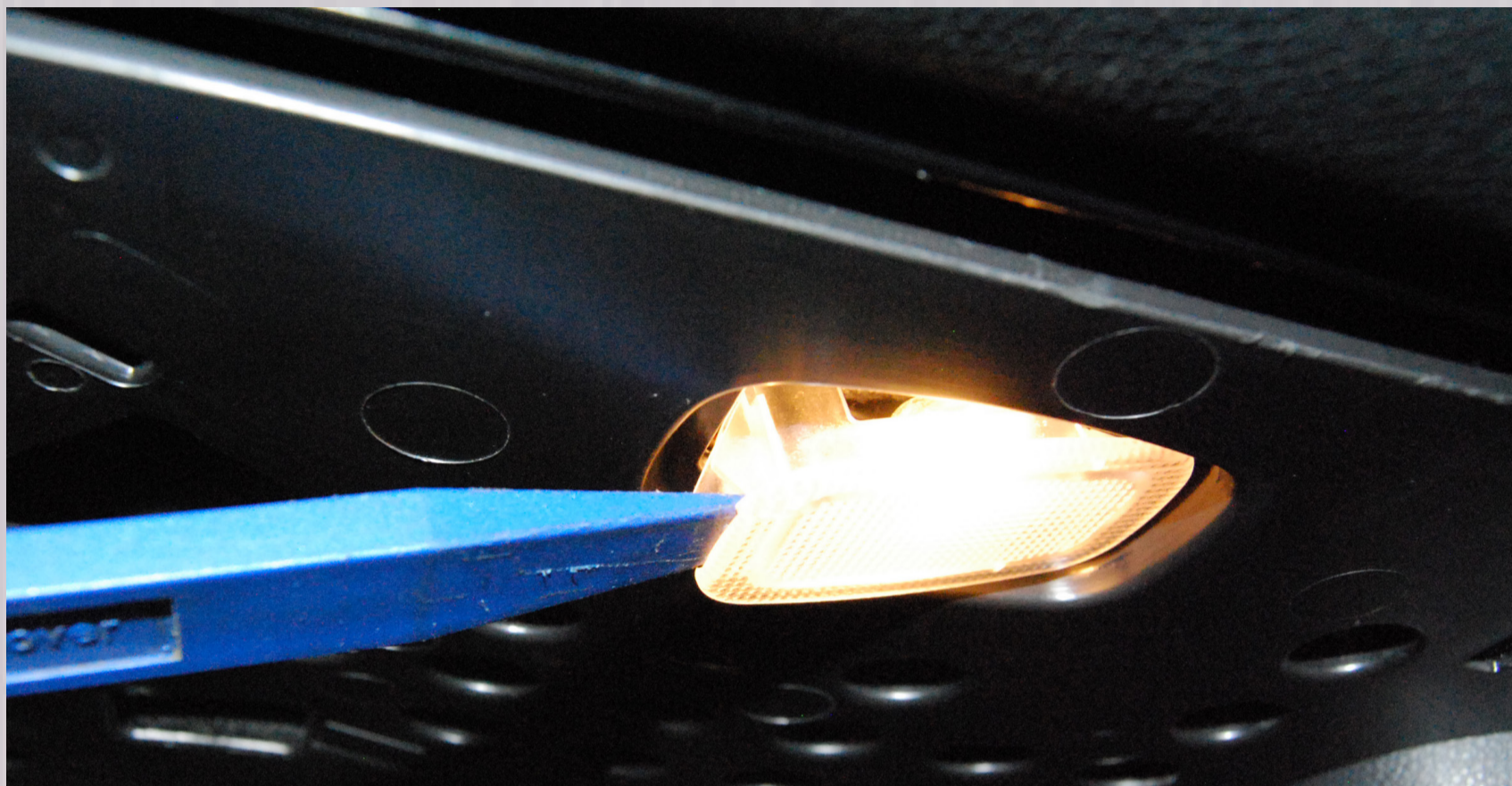
Using the non-marring tool, pry up at the front of the right clear portion of the dome. The long clear part will partially dislodge - move towards the rear attachment point of the light and pry upwards releasing the entire plastic piece.



Set the piece aside and replace the incandescent bulb with the 8-chip wedge-style LED.



Moving to the footwells of the vehicle, begin by prying up the left side of the bulb housing.



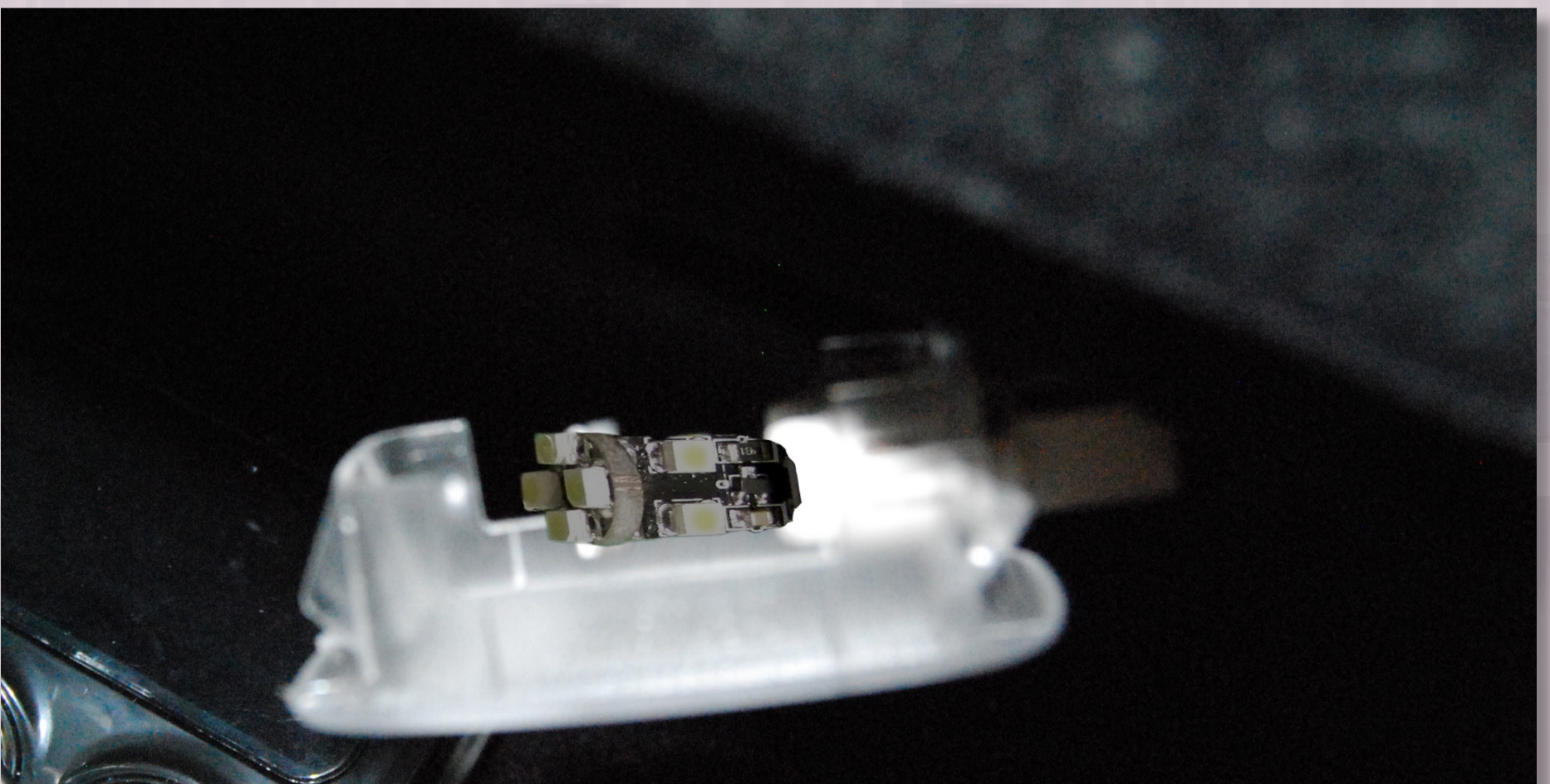
Remove the housing completely and replace the incandescent bulb with the wedge LED.



Use the non-marring tool to dislodge the glovebox bulb housing. Pry from the left side, revealing the incandecent bulb.



Replace the old incandecent bulb with thew wedge LED.



The easiest way to access the door bulb is by prying up the red plastic covering on the right side of the housing.



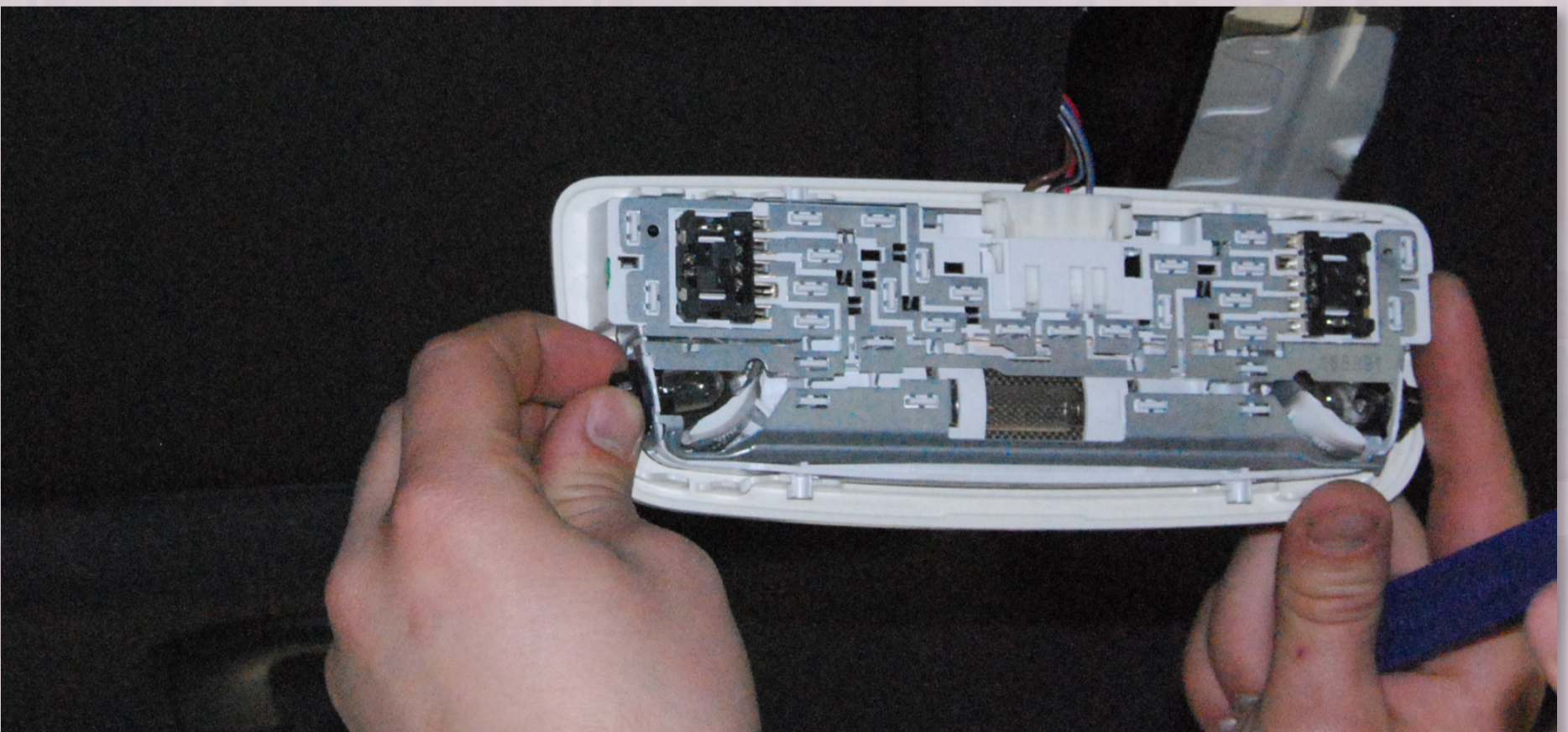
The incandescent bulb must be removed using pliers. Be careful not to apply too much pressure on the bulb with the pliers; if the bulb breaks, it will be extremely difficult to remove.



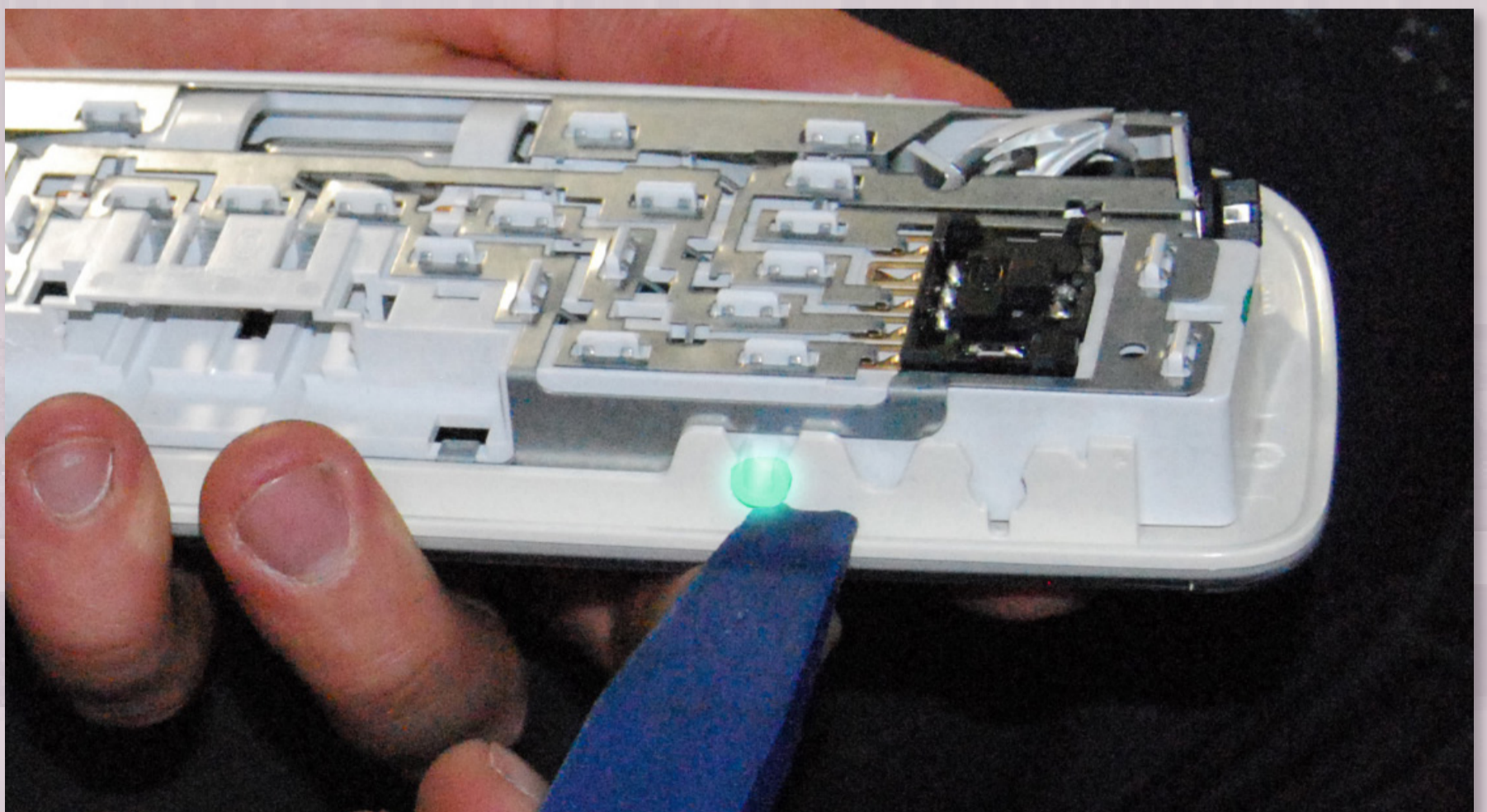
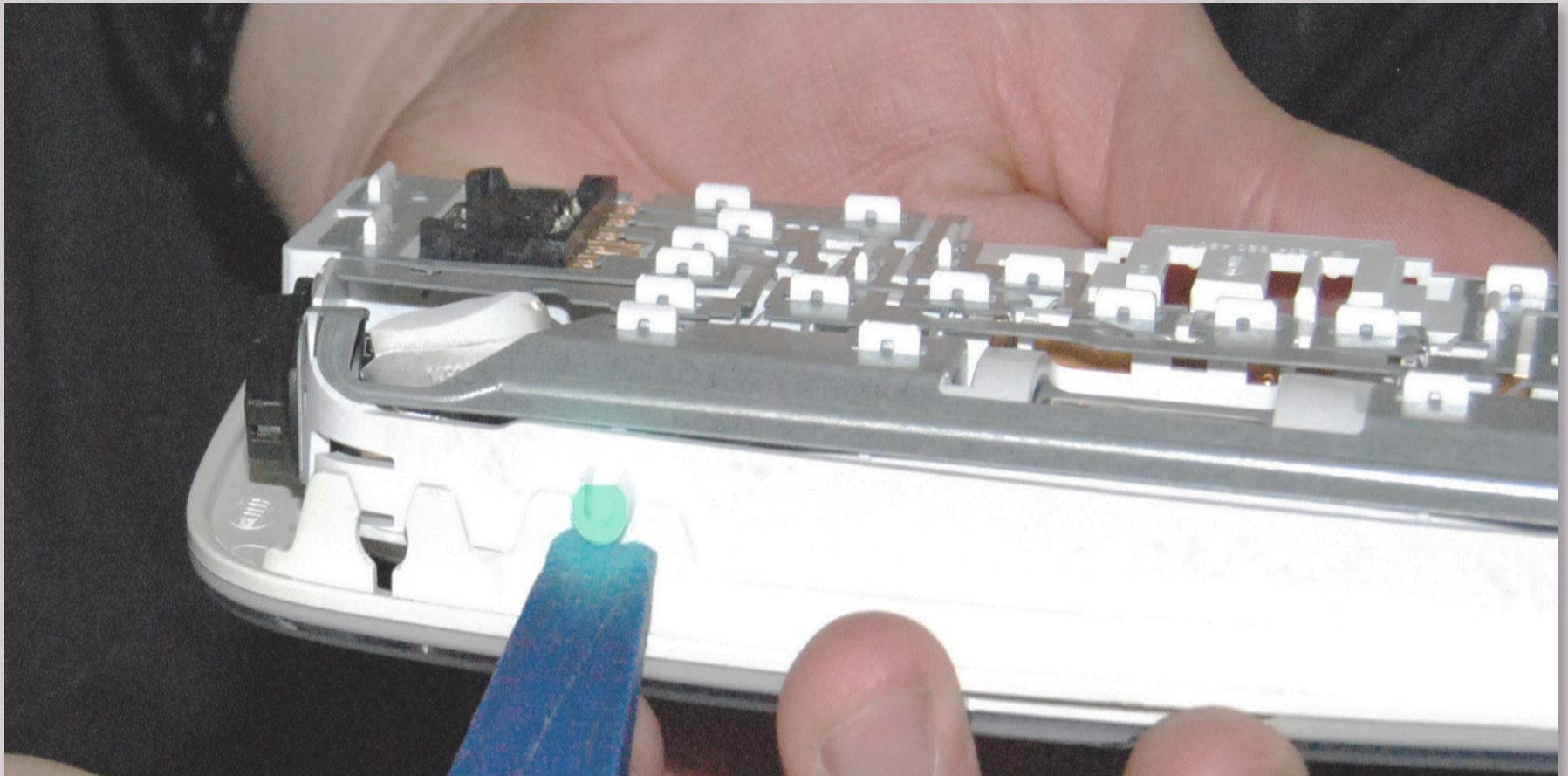
The rear dome is dislodged by prying up at the rear left and right sides of the housing and very carefully applying pressure to release it from the headliner. This will require some finesse. Be careful not to pry from the middle of the housing; it doesn't take much to chip or crack this portion of the housing with excessive pressure.



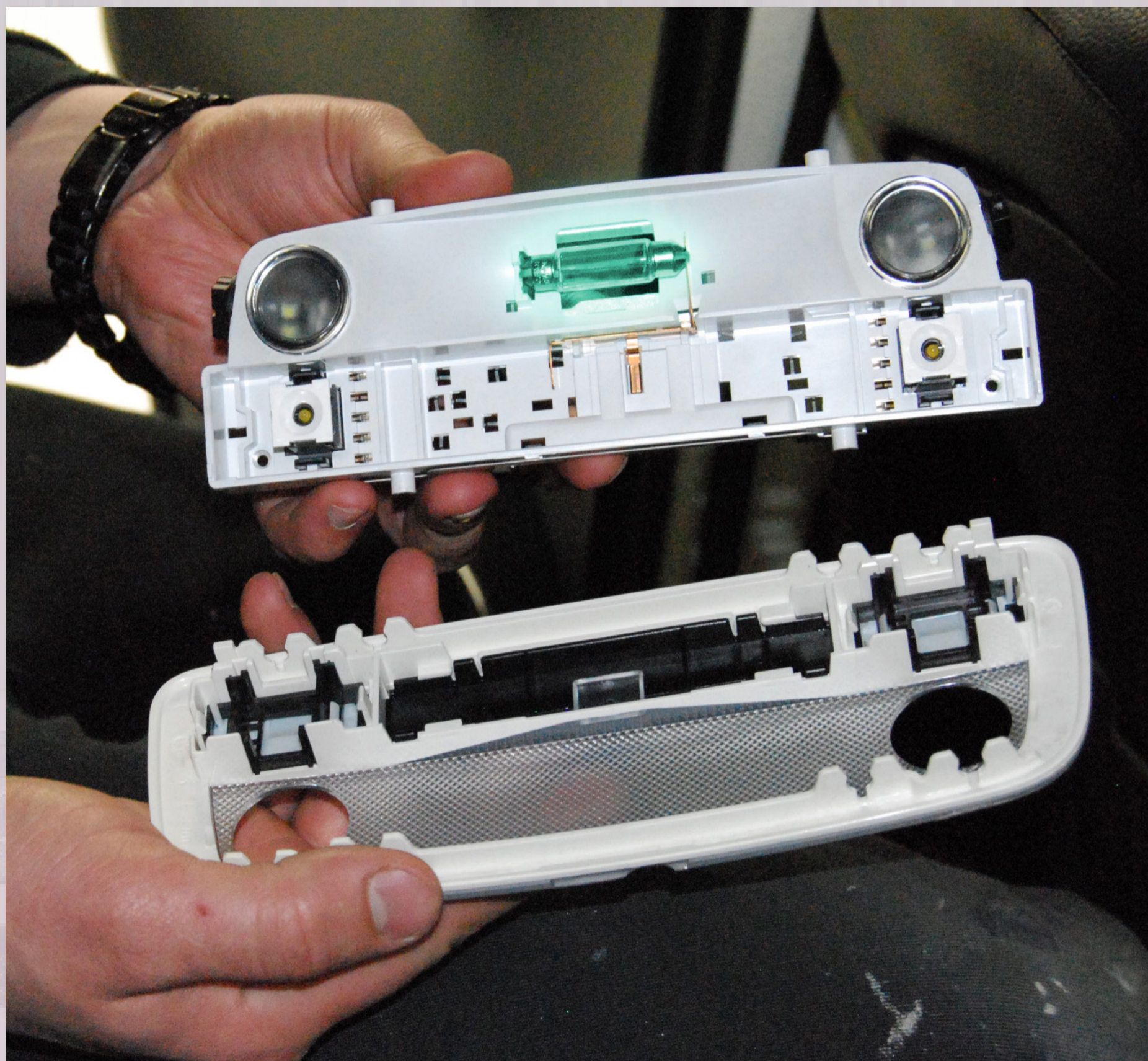
On the left and right sides are two black twist-out incandescent bulbs. Remove these and replace with two 8-chip LED bulbs.



The rear housing will require separating into two halves to access the full set of bulbs. Pry upwards on the white plastic tabs to release the outer face from the housing.



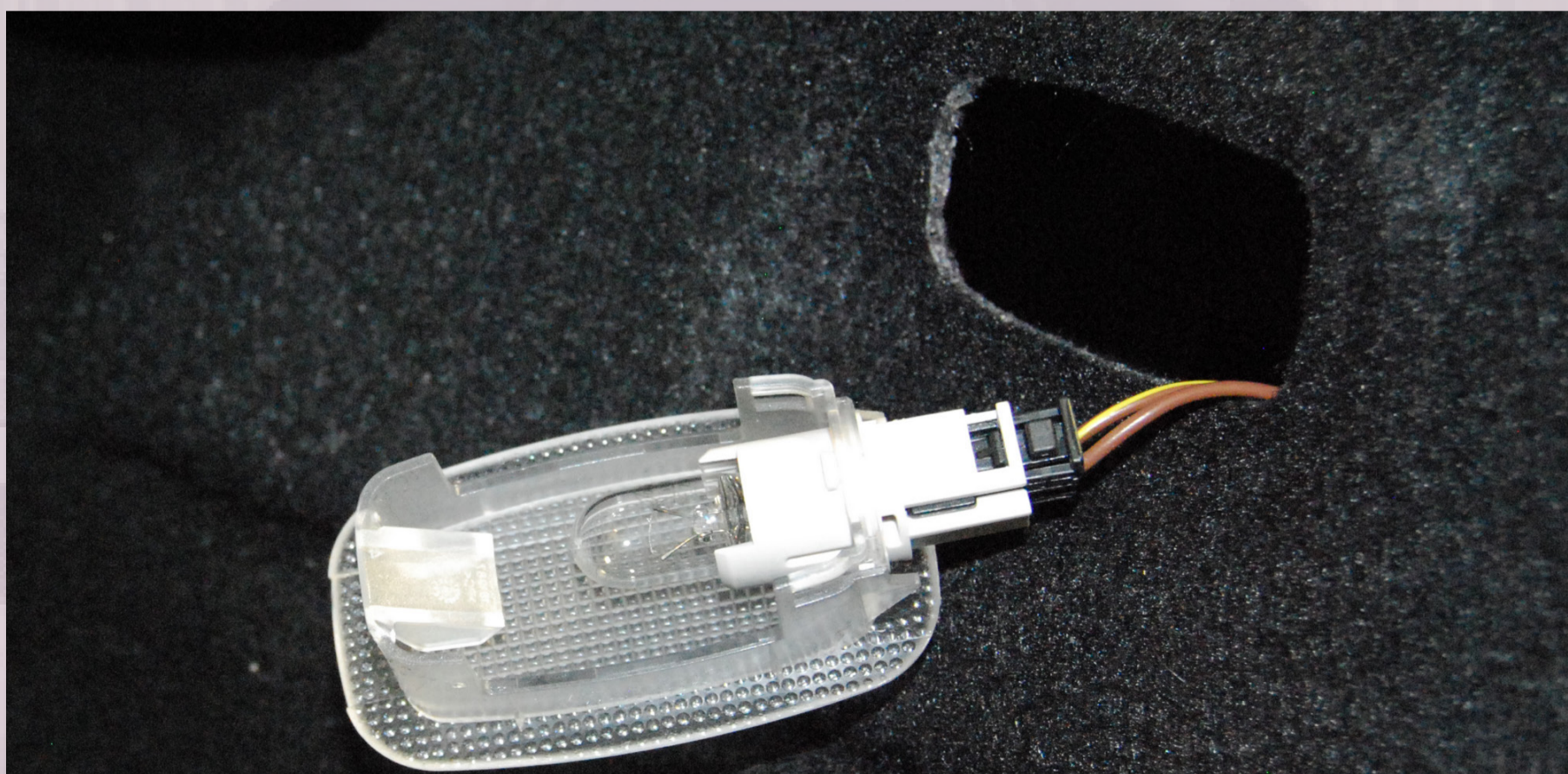
The incandescent festoon is visible in the middle of the rear of the housing. Replace with the 3-chip LED Festoon, making sure that the LED diodes face outwards through the clear plastic covering.



There are two trunk lights; a primary light on the right wall of the trunk, and a secondary light along the bottom of the trunk door. Pry the trunk light outwards, pulling from the left side of the housing.



Replace the incandescent bulb with the wedge LED.



The secondary trunk bulb will require removing the trim from the trunk lid. There are four phillips head screws on the bottom side of the trunk lid.



When the screws are removed, use the non-marring tool to dislodge the three trim clips. Insert the tool underneath the plastic housing and pry outwards to displace the clip.



Pull down the black plastic trunk lining to reveal the rear of the secondary bulb housing. Twist out the bulb and replace with the 8-Chip wedge LED Bulb.



ONCE YOUR FULL SET OF LED'S ARE INSTALLED, TURN THE IGNITION TO THE SECOND POSITION AND RE-INSPECT EACH BULB LOCATION MAKING SURE THERE IS NO LIGHT FLICKERING.

YOUR NEWLY INSTALLED ZIZA LEDs WILL EMIT A WHITER LIGHT, RUN COOLER, AND LAST LONGER!

