

ECS TUNING®

Volkswagen MK5 Golf/GTI/R32

Hatch Pop Kit

Installation Instructions



Proper service and repair procedures are vital to the safe, reliable operation of all motor vehicles as well as the personal safety of those performing the repairs. Standard safety procedures and precautions (including use of safety goggles and proper tools and equipment) should be followed at all times to eliminate the possibility of personal injury or improper service which could damage the vehicle or compromise its safety.

INTRODUCTION

ECS Tuning Volkswagen MK5 Hatch Pop Kit

The ECS Tuning Volkswagen MK5 Hatch Pop Kit offers the following features:

- Makes your hatch open completely with the push of a button
- Simple installation
- Complete with all necessary components
- Utilizes your original key fob

ECS Difficulty Gauge



1 - Easy Pro - 4
2 - Moderate Advanced - 3

Installing the Volkswagen MK5 Hatch Pop Kit is an easy afternoon project that you will be able to complete in about an hour, however VAG-COM coding is required. If you do not have access to VAG-COM diagnostic software, please consult a professional repair facility before beginning. These step by step instructions will provide you with a smooth, trouble free installation. Thank you for purchasing our ECS Tuning Volkswagen MK5 Hatch Pop Kit. We appreciate your business!

TABLE OF CONTENTS

Kit Contents.....pg.4
 Required Tools and Equipment.....pg.5
 Shop Supplies and Materials.....pg.6
 Installation Notes and Safety.....pg.7
 Hatch Pop Kit Installation.....pg.8
 Schwaben Tools.....pg.18

Symbols:

The following symbols may be used throughout these instructions indicating special attention:



FORK IN THE ROAD: When there are different options within any given kit, we will direct you to the proper page and step to continue.



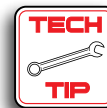
YIELD: Pause for a moment to double check component installation before you continue. Ignoring this can cost you time later during the installation.



CAUTION: Pay close attention to these warnings and instructions. Difficult installation, personal injury or component damage may occur if ignored.



STOP: The upcoming steps require specific preparation and/or assistance in the interest of safety. Please read ahead in the instructions and prepare before continuing.



TECH TIP: Tips and tricks to make the job go much easier.



NOTE: Additional information that may be useful to the installation depending on your application.

KIT CONTENTS



Gas Struts



Ball Studs



Washers



Spring Loaded Stop Bumpers

REQUIRED TOOLS

Note: The tools required for each step will be listed by the step number throughout these instructions.

Standard Automotive Tools

Required For This Install

Available On Our Website

- Protecta-Sockets (for lug nuts)..... [ES#2221243](#)
- **3/8" Drive Ratchet** [ES#2765902](#)
- 3/8" Drive Torque Wrench..... [ES#2221245](#)
- **3/8" Drive Deep and Shallow Sockets**..... [ES#2763772](#)
- 3/8" Drive Extensions [ES#2804822](#)
- Hydraulic Floor Jack [ES#240941](#)
- Torx Drivers and Sockets [ES#11417/8](#)
- 1/2" Drive Deep and Shallow Sockets [ES#2839106](#)
- 1/2" Drive Ratchet
- 1/2" Drive Extensions
- 1/2" Drive Torque Wrench [ES#2221244](#)
- 1/2" Drive Breaker Bar [ES#2776653](#)
- File Set
- Air Nozzle/Blow Gun
- Bench Mounted Vise
- Crows Foot Wrenches
- Hook and Pick Tool Set..... [ES#2778980](#)

- 1/4" Drive Ratchet [ES#2823235](#)
- 1/4" Drive Deep and Shallow Sockets..... [ES#2823235](#)
- 1/4" Drive Extensions [ES#2823235](#)
- 1/4" Drive Torque Wrench
- Plier and Cutter Set..... [ES#2804496](#)
- **Flat and Phillips Screwdrivers** [ES#2225921](#)
- Jack Stands [ES#2763355](#)
- Ball Pein Hammers
- Pry Bar Set..... [ES#1899378](#)
- Electric/Cordless Drill
- Wire Strippers/Crimpers
- **Adjustable (Crescent) Type Wrenches**
- Drill Bits
- Punch and Chisel Set
- **Hex Bit (Allen) Wrenches and Sockets** [ES#11420](#)
- Thread Repair Tools [ES#1306824](#)
- Open/Boxed End Wrench Set [ES#2765907](#)

Specialty Tools

- **VAG Com Diagnostic Software**

SHOP SUPPLIES AND MATERIALS

Standard Shop Supply Recommendations: We recommend that you have a standard inventory of automotive shop supplies before beginning this or any automotive repair procedure. The following list outlines the basic shop supplies that we like to keep on hand. Shop supplies with a hyperlink are available on our website.

- Hand Cleaner/Degreaser - [Click Here](#)
- Pig Mats - for protecting your garage floor and work area from spills and stains - [Click Here](#)
- Spray detailer - for rapid cleaning of anything that comes into contact with your paint such as brake fluid - [Click Here](#)
- Micro Fiber Towels - for cleaning the paint on your car - [Click Here](#)
- Latex Gloves - for the extra oily and dirty jobs - [Click Here](#)
- Medium and High Strength Loctite Thread lock compound - to prevent bolts from backing out - [Click Here](#)
- Anti-Seize Compound - to prevent seizing, galling, and corrosion of fasteners - [Click Here](#)
- Aerosol Brake/Parts Cleaner - for cleaning and degreasing parts
- Shop Rags - used for wiping hands, tools, and parts
- Penetrating oil - for helping to free rusted or stuck bolts and nuts
- Mechanics wire - for securing components out of the way
- Silicone spray lube - for rubber components such as exhaust hangers
- Paint Marker - for marking installation positions or bolts during a torquing sequence
- Plastic Wire Ties/Zip Ties - for routing and securing wiring harnesses or vacuum hoses
- Electrical tape - for wrapping wiring harnesses or temporary securing of small components

INSTALLATION NOTES

- **RH** refers to the *passenger side* of the vehicle.
- **LH** refers to the *driver side* of the vehicle.
- Always use the proper torque specifications.
- If applicable to this installation, torque specifications will be listed throughout the document and at the end as well.
- Please read all of these instructions and familiarize yourself with the complete process **BEFORE** you begin.

GENERAL PREPARATION AND SAFETY INFORMATION

ECS Tuning cares about your health and safety. Please read the following safety information. This information pertains to automotive service in general, and while it may not pertain to every job you do, please remember and share these important safety tips.

- Park your car in a safe, well lit, level area.
- Shut the engine off and remove the key from the ignition switch.
- Make sure any remote start devices are properly disabled.
- **ALWAYS** wear safety glasses.
- Make sure the parking brake is applied until the vehicle is safely lifted and supported.
- If using an automotive lift, be sure and utilize the factory specified lift points. Lifting a vehicle in an incorrect location can cause damage to the suspension/running gear.
- When lifting a vehicle using a jack, always utilize the factory specified lift points. Lifting a vehicle in an incorrect location can cause damage to the suspension/running gear. **ALWAYS** support the vehicle with jack stands.
- **ALWAYS** read and follow all safety information and warnings for the equipment you are using.



Never get underneath a vehicle that is supported only by a jack. Always make sure that the vehicle is securely supported on jack stands.

HATCH POP KIT INSTALLATION

Step 1:

Open the rear hatch and support it so it will not close once the original struts are removed. You can support it with a prop rod or similar tool, or even easier, enlist the help of a friend.



The hatch will not stay open with only one strut. The hatch must be supported at all times during this installation.

Step 2:

Small flat blade screwdriver

Remove both original struts by prying out the retaining clips at the top and bottom, then pulling the strut ends off of the original ball studs.



HATCH POP KIT INSTALLATION

Step 3: 13mm Deep Socket, 3/8 Ratchet

Remove both of the original long ball studs on the hatch.



Step 4: 13mm Deep Socket, 3/8 Ratchet

Install both of the new shorter ball studs on the hatch, making sure to place one of the new washers on each ball stud before installing it.



HATCH POP KIT INSTALLATION

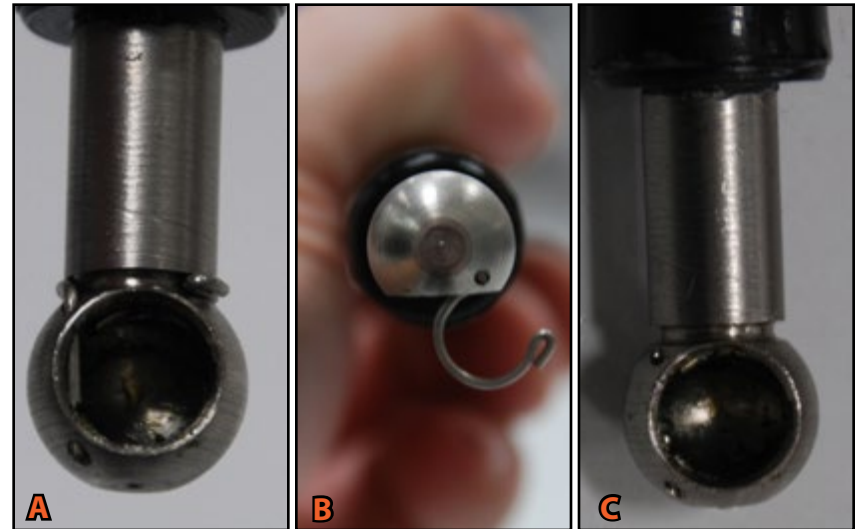
Step 5:

The lower ball socket of each new strut has a wire clip retainer. Remove the wire clip from each ball socket using the pictures on the right as a guide.

A: The clip in its completely installed position.

B: Pivot the wire clip out of the groove at then end of the ball socket.

C: Pull the wire clip out of the two locating holes in the ball socket.



Step 6:

Push the lower ball socket of each new strut onto the ball stud at the body, then install the wire clips previously removed in step five.



HATCH POP KIT INSTALLATION

Step 7:

Push the upper end of each new strut into place on the new shorter ball studs located on the hatch.



It is not necessary to remove the retaining clips to install the upper ends of the new struts.



Step 8:

Crescent Wrench

Remove the two original hatch bumpers by twisting them counter clockwise one quarter turn then pulling them straight out.



You may be able to turn the bumpers out by hand. Use a wrench only if they are stuck in place.



HATCH POP KIT INSTALLATION

Step 9:

Unpack the new spring loaded bumpers. They should look like the picture on the left with the spring locked in the compressed position. If they look like this, then skip to step 11. If the spring is released as shown in the picture on the right, then continue with step 10.



We recommend reading through step 17 to familiarize yourself with the spring bumper installation before proceeding.



Correct-skip to step 11



Incorrect-continue with step 10

Step 10:

Push the bumper cap until the spring is compressed, then turn it clockwise approximately one quarter turn until the cap is locked with the spring in the compressed position (reference the LH picture in step nine).



HATCH POP KIT INSTALLATION

Step 11: Crescent Wrench

Install the two new bumpers into the hatch by pushing them in then turning them one quarter turn clockwise.



Use a wrench only for light assistance in turning the new bumpers. Do not continue to put force on these once they stop turning.



Step 12: 3mm Hex Bit

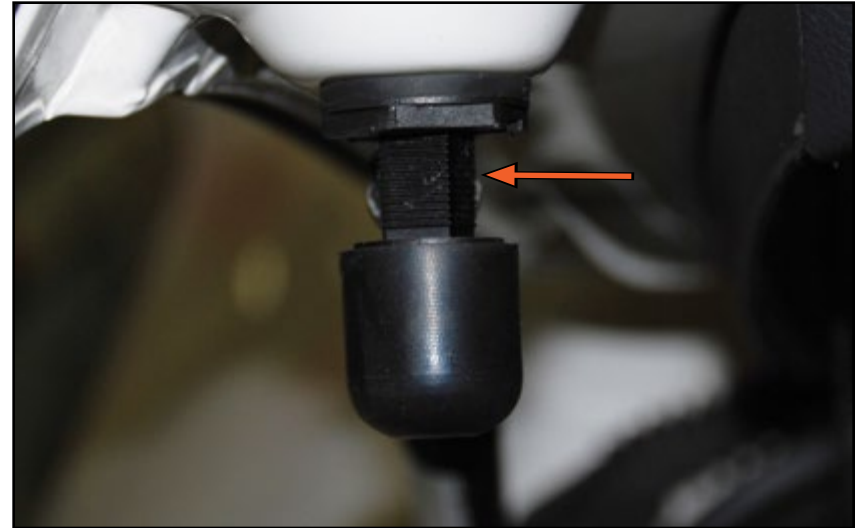
Insert a 3mm hex bit into the center of each new bumper until it engages the small screw inside, then loosen the screw approximately three complete turns. You will be able to see that the bumpers are loose and you can wiggle them back and forth.



HATCH POP KIT INSTALLATION

Step 13:

Note the position of the spring bumpers. The depth of these bumpers is adjustable. The bumpers will be extended as shown in the picture. Also note the number of teeth that are exposed on the main shaft of each bumper (arrow).



Step 14:

Completely close, but DO NOT SLAM the hatch. Reopen the hatch and the bumpers will have adjusted themselves to the correct position. Note in this picture how the main shaft of the bumper has been pushed in and there are fewer teeth visible.



The amount of adjustment may vary depending on a number of factors including hatch fitment, bump stop condition etc.

HATCH POP KIT INSTALLATION

Step 15: 3mm Hex Bit

Tighten the 3mm screw in the center of each spring bumper. This will secure the bumper in the adjusted position.



Step 16:

Grasp each bumper cap and turn it counter clockwise.



HATCH POP KIT INSTALLATION

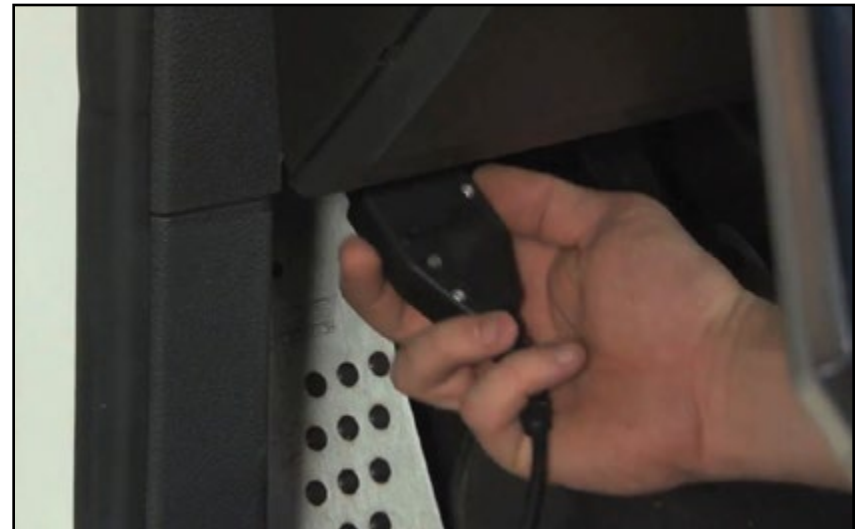
Step 17:

The bumper caps will release and extend as shown in the picture. They are now completely adjusted and ready for use.



Step 18: VAG-COM

Connect the VAG-COM Diagnostic connector to the OBDII port in your car.



HATCH POP KIT INSTALLATION

Step 19: VAG-COM

Reprogram the hatch lock function using the following guidelines:

Central Convenience-46

Coding-07

Long Coding Helper

Copy and paste your stock coding as a precautionary measure

Click BYTE#2 (This is the third byte from the left)

Check box Bit#3 Central Locking (Rear Lid) Soft Touch
(Direct open/no release)

Close that window

Click "Do it"



Step 20:

Disconnect VAG-COM, close the hatch, push the button, and enjoy!



SCHWABEN - BUILD THE ULTIMATE TOOL COLLECTION

At ECS Tuning, we carry a line of high quality Schwaben tools and equipment to help you build your ultimate tool collection. Never before has affordability and quality been so closely related. Our entire Schwaben line is subjected to strict in house testing for strength and durability. See what we have to offer and equip your garage without breaking the bank.



Your MK5 Golf/GTI/R32 Hatch Pop Kit installation is complete!



These instructions are provided as a courtesy by ECS Tuning.

Proper service and repair procedures are vital to the safe, reliable operation of all motor vehicles as well as the personal safety of those performing the repairs. Standard safety procedures and precautions (including use of safety goggles and proper tools and equipment) should be followed at all times to eliminate the possibility of personal injury or improper service which could damage the vehicle or compromise its safety.

Although this material has been prepared with the intent to provide reliable information, no warranty (express or implied) is made as to its accuracy or completeness. Neither is any liability assumed for loss or damage resulting from reliance on this material. SPECIFICALLY, NO WARRANTY OF MERCHANTABILITY, FITNESS FOR A PARTICULAR PURPOSE OR ANY OTHER WARRANTY IS MADE OR TO BE IMPLIED WITH RESPECT TO THIS MATERIAL. In no event will ECS Tuning, Incorporated or its affiliates be liable for any damages, direct or indirect, consequential or compensatory, arising out of the use of this material.