



Audi Q5/SQ5 Ziza LED Interior Lighting Kit Installation Instructions



Proper service and repair procedures are vital to the safe, reliable operation of all motor vehicles as well as the personal safety of those performing the repairs. Standard safety procedures and precautions (including use of safety goggles and proper tools and equipment) should be followed at all times to eliminate the possibility of personal injury or improper service which could damage the vehicle or compromise its safety.

INTRODUCTION

Audi Q5/SQ5 Ziza LED Interior Light Kit ES#2855349

This Ziza LED interior light kit from ECS Tuning offers the following:

- Contains all LED's to replace all the incandescent bulbs in the interior of your Q5/SQ5
- Bright white lighting
- Long lasting, high quality LED's
- Simple installation

ECS Difficulty Gauge



1 - Easy

Pro - 4

2 - Moderate

Advanced - 3

Installing this Q5/SQ5 Ziza LED interior light kit is a quick and easy project that requires only two basic tools, a Torx driver and a trim tool. Enhance the interior of your Q5 or SQ5 by converting it to full LED lighting. The time investment to benefit ratio is strongly in your favor, as this will only take you about 45 minutes. Thank you for purchasing our ECS Tuning Ziza LED interior light kit. We appreciate your business!

TABLE OF CONTENTS

Kit Contents.....	pg.4
Required Tools	pg.5
Audi Q5 LED Location Chart.....	pg.6
Installation and Safety Notes	pg.7
Doors, Luggage Compartment, and Glove Box Bulbs	pg.8
Vanity Light Bulbs	pg.13
Front Dome and Map Light Bulbs	pg.15
Rear Dome and Map Light Bulbs.....	pg.19
Schwaben Tools	pg.22

Symbols:

The following symbols may be used throughout these instructions indicating special attention:



FORK IN THE ROAD: When there are different options within any given kit, we will direct you to the proper page and step to continue.



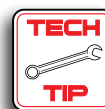
YIELD: Pause for a moment to double check component installation before you continue. Ignoring this can cost you time later during the installation.



CAUTION: Pay close attention to these warnings and instructions. Difficult installation, personal injury or component damage may occur if ignored.



STOP: The upcoming steps require specific preparation and/or assistance in the interest of safety. Please read ahead in the instructions and prepare before continuing.



TECH TIP: Tips and tricks to make the job go much easier.



NOTE: Additional information that may be useful to the installation depending on your application.

KIT CONTENTS



T10 "Wedge" Style LED's (18)



Vanity Light 38mm Festoon (2)



Front Dome Light 36mm Festoon (2)

REQUIRED TOOLS

Note: The tools required for each step will be listed by the step number throughout these instructions.

Below is a list of the tools we used to install the Audi Q5 Ziza LED Interior Light Kit.

- Non-Marring Trim Tool Available at ecstuning.com..... [ES#2500877](#)
- Torx Drivers: T25 Available at ecstuning.com..... [ES#11417](#)

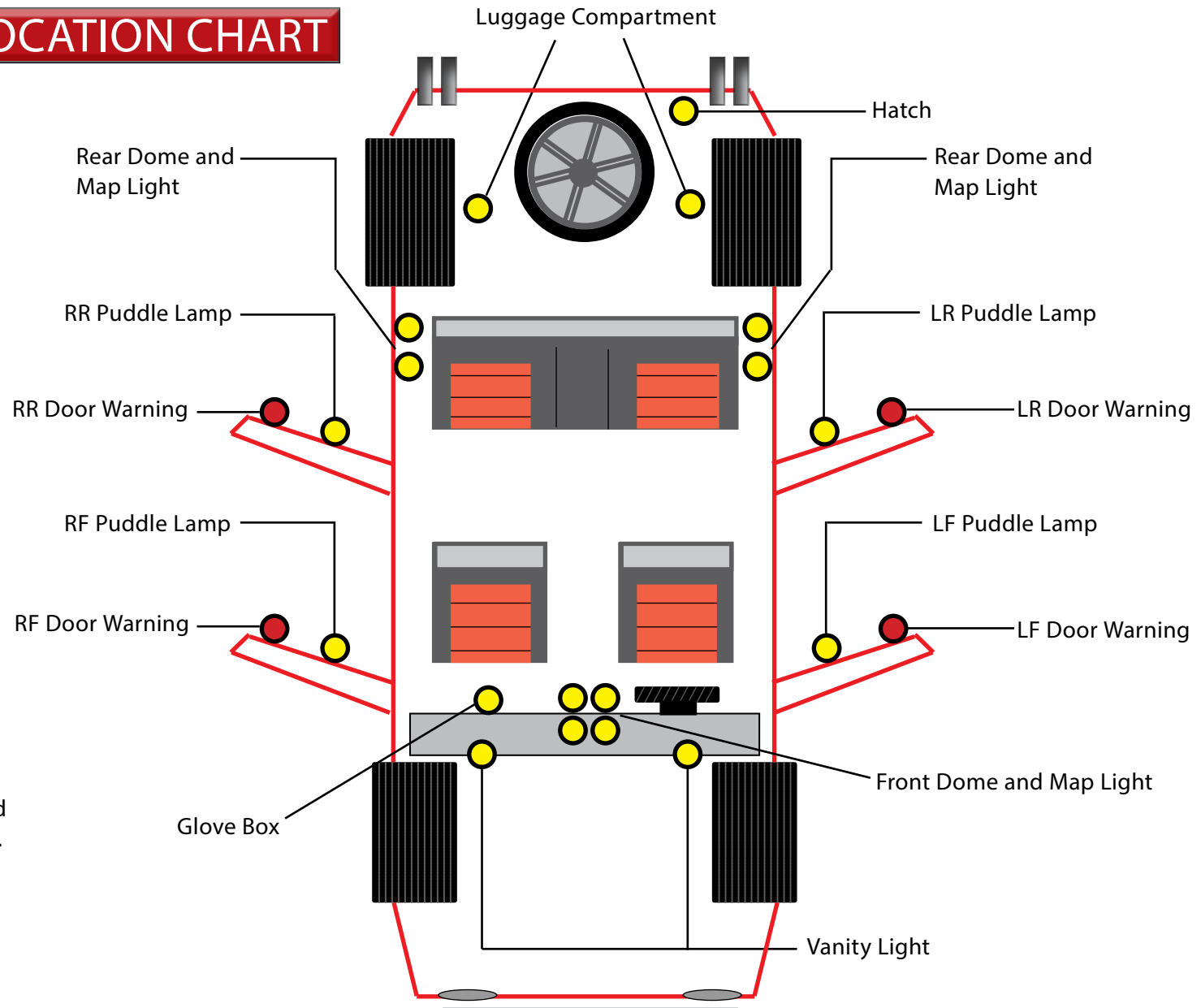


SHOP SUPPLIES AND MATERIALS

- Hand Cleaner/Degreaser..... Available at ecstuning.com..... [ES#2167336](#)

AUDI Q5/SQ5 LED LOCATION CHART

You will be replacing the OE incandescent bulbs indicated here with the LED bulbs in your kit.



The front and rear footwell lamps are already equipped from the factory with LED's.

INSTALLATION NOTES

- **RH** refers to the *passenger side* of the vehicle.
- **LH** refers to the *driver side* of the vehicle.
- Always use the proper torque specifications.
- If applicable to this installation, torque specifications will be listed throughout the document and at the end as well.
- Please read all of these instructions and familiarize yourself with the complete process **BEFORE** you begin.

GENERAL PREPARATION AND SAFETY INFORMATION

ECS Tuning cares about your health and safety. Please read the following safety information. This information pertains to automotive service in general, and while it may not pertain to every job you do, please remember and share these important safety tips.

- Park your car in a safe, well lit, level area.
- Shut the engine off and remove the key from the ignition switch.
- Make sure any remote start devices are properly disabled.
- **ALWAYS** wear safety glasses.
- Make sure the parking brake is applied until the vehicle is safely lifted and supported.
- If using an automotive lift, be sure and utilize the factory specified lift points. Lifting a vehicle in an incorrect location can cause damage to the suspension/running gear.
- When lifting a vehicle using a jack, always utilize the factory specified lift points. Lifting a vehicle in an incorrect location can cause damage to the suspension/running gear. **ALWAYS** support the vehicle with jack stands.
- **ALWAYS** read and follow all safety information and warnings for the equipment you are using.



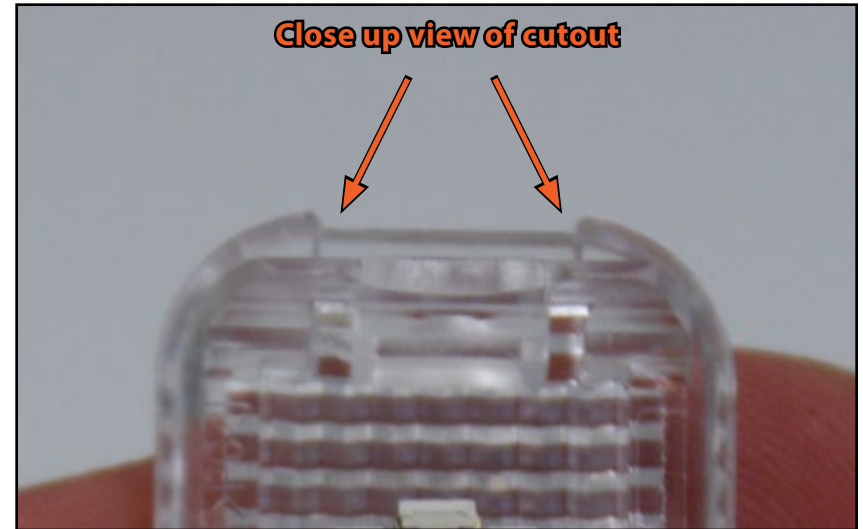
Never get underneath a vehicle that is supported only by a jack. Always make sure that the vehicle is securely supported on jack stands.

DOORS, LUGGAGE COMPARTMENT, AND GLOVE BOX BULBS

Step 1:

Inspect the picture of the lens on the right. Each one has a small cutout on one end to allow for insertion of a removal tool.

The picture on the right shows a closeup of the small cutout. They can also be seen easily by simply looking at the lens.



Step 2: Non-Marring Trim Tool

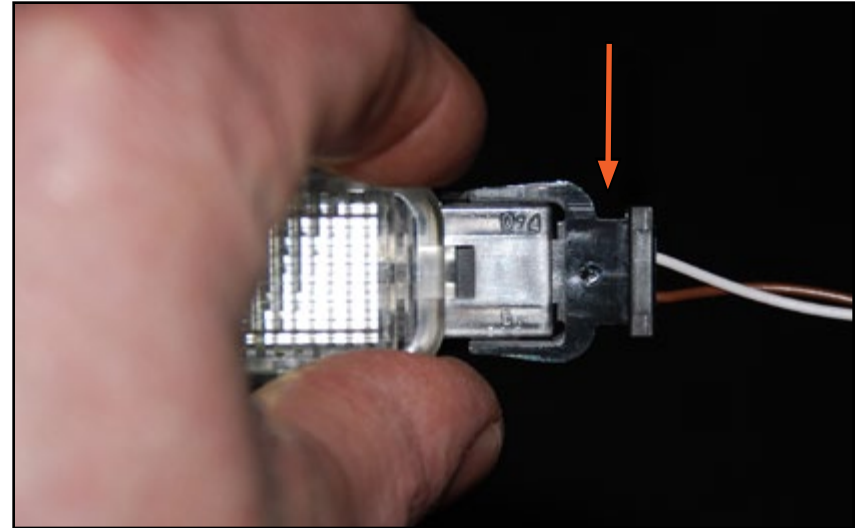
Begin with either the doors or the luggage compartment. (The glove box lamp is difficult to see and replacing the others first will allow you to do it by "feel"). Locate the cutout in the lens you have chosen to start with, then Insert a non-marring trim tool into the cutout and gently pry it outwards. The complete lamp housing will easily pop out.



DOORS, LUGGAGE COMPARTMENT, AND GLOVE BOX BULBS

Step 3:

Disconnect the electrical connector (arrow) from the housing. Grasp the connector and wiggle slightly as you pull for easy removal.



Step 4: Non-Marring Trim Tool

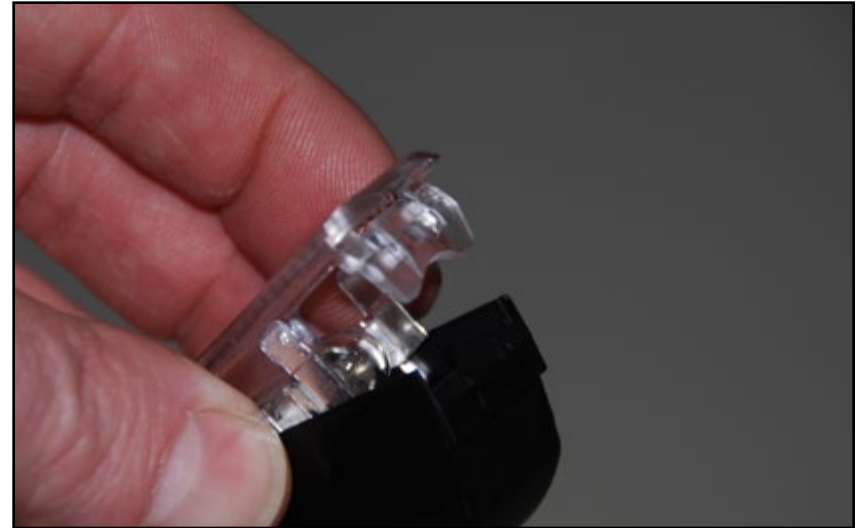
Using the same non marring trim tool, gently pry between the housing and the tab on the end of the lens.



DOORS, LUGGAGE COMPARTMENT, AND GLOVE BOX BULBS

Step 5:

Lift the lens off the housing.

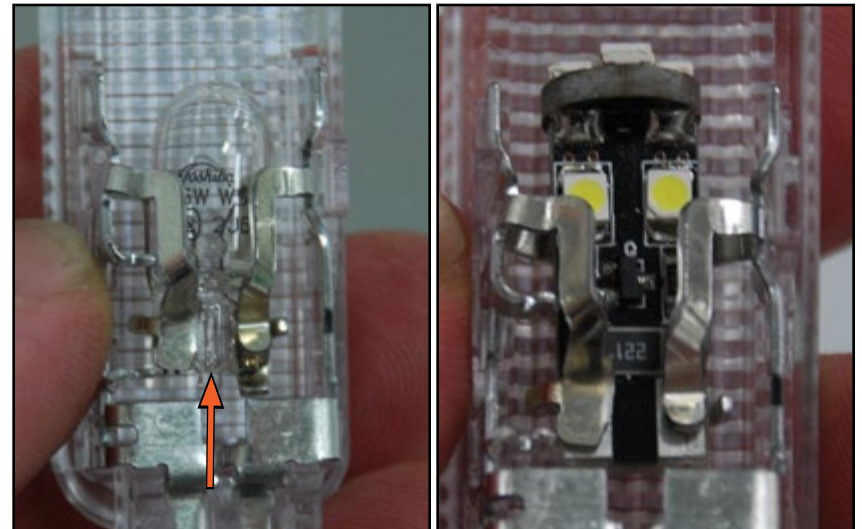


Step 6:

Pull the original bulb out of it's socket and insert the new LED bulb in it's place. If you can not grasp the original bulb with your fingers, you may have to use the trim tool to push the bulb out from the bottom (arrow).



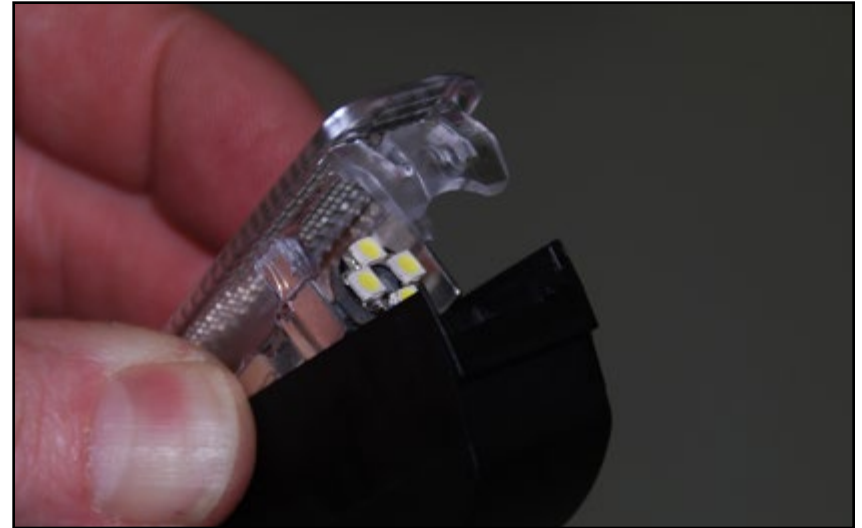
The bulb may be hot and can cause burns. Be sure to let it cool before removing.



DOORS, LUGGAGE COMPARTMENT, AND GLOVE BOX BULBS

Step 7:

Re-install the lens onto the housing.



Step 8:

Plug the lamp back in and re-install it into place.



These LED bulbs are polarity specific. If they do not work when you plug them in, remove the bulb, flip it over, and re-install it.



DOORS, LUGGAGE COMPARTMENT, AND GLOVE BOX BULBS

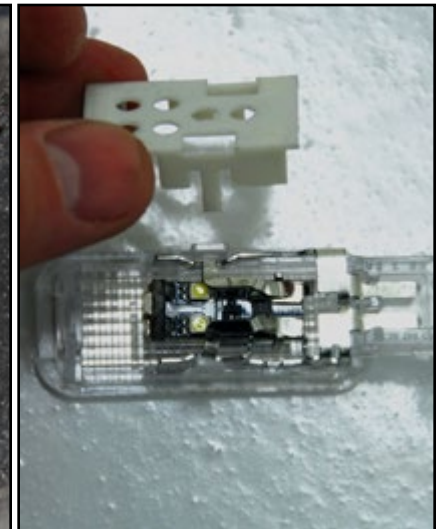
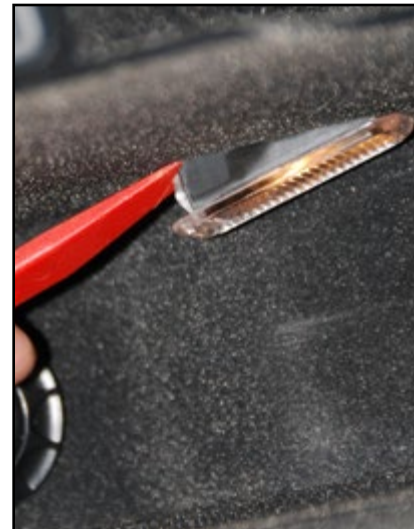
Step 9: Non-Marring Trim Tool

Replace the remaining luggage compartment, hatch, and door warning, and puddle lamp bulbs in the same manner. Refer to page five for bulb location.



Step 10: Non-Marring Trim Tool

Install an LED bulb in the glove box lamp. It is difficult to see but can be easily removed in the same manner as the other lamps. The glove box lens does not have a housing attached to the underside, but rather a cover that's removed with the non-marring trim tool, and then snapped back into place.



VANITY LIGHT BULBS

Step 1: Non-Marring Trim Tool

Insert the non-marring trim tool into the cut-out section of the LH Vanity Light lens, and pry it out as you did with the doors and luggage compartment lights. Disconnect the electrical connector and remove the lens.

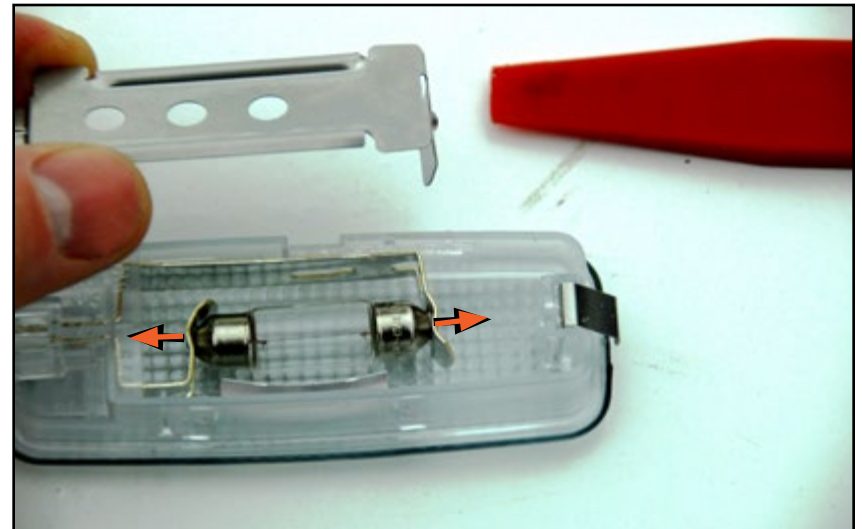


Be sure to thoroughly wash your hands before working near the headliner. It is extremely susceptible to picking up dirt, even light dirt that you cannot see.



Step 2:

Remove the metal cover by lifting it out, then use your fingers to spread the bulb contacts and remove the bulb.



VANITY LIGHT BULBS

Step 3:

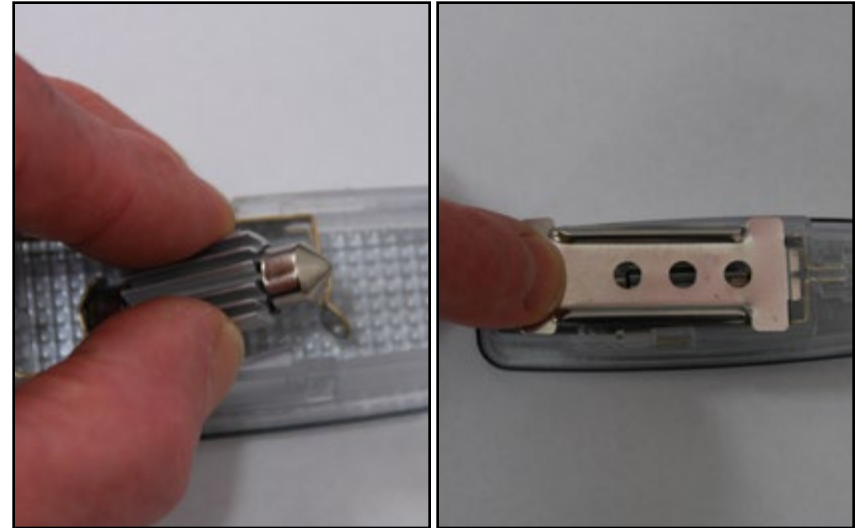
Place the LED between the contacts with the LED's pointing down and the heat sink facing up, spread the contacts slightly, install the LED, then re-install the metal cover.



Be sure to use the vanity light LED's. Refer to page 4 for bulb identification.

Step 4:

Plug the lamp back in and re-install it into place. Repeat the steps for the other side.



FRONT DOME AND MAP LIGHT BULBS

Step 1: T25 Torx Driver

Open the sunglass compartment and remove the T25 Torx fastener, then lower the overhead console to access the back side.

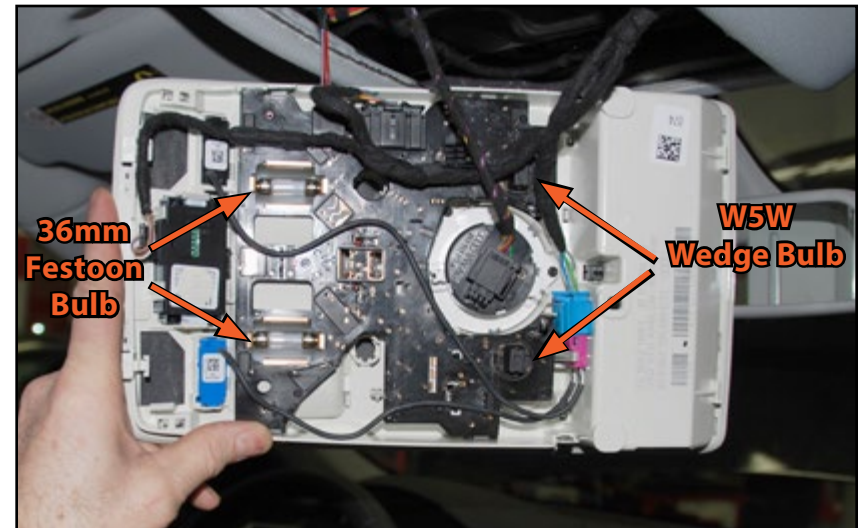


Note the location of the hidden tabs for the dome light lens (red circles). This will be relevant in step six, page 17.



Step 2:

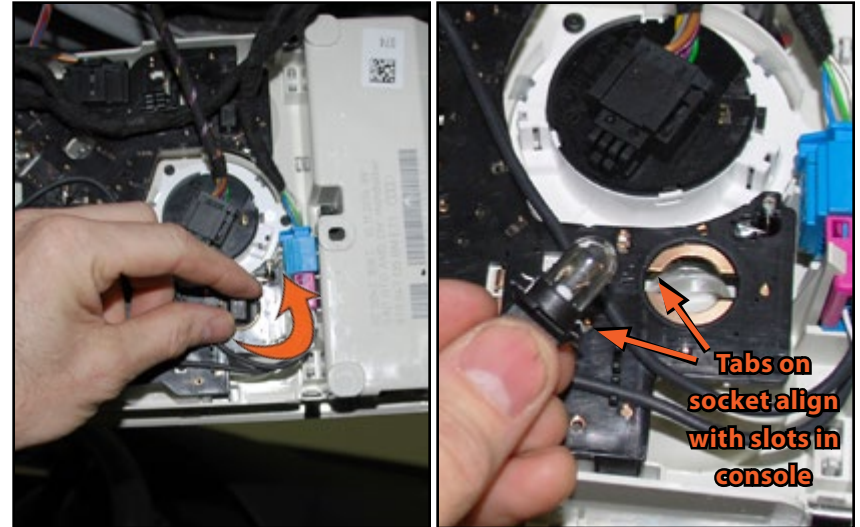
Locate the bulbs that are to be removed on the back side of the overhead console.



FRONT DOME AND MAP LIGHT BULBS

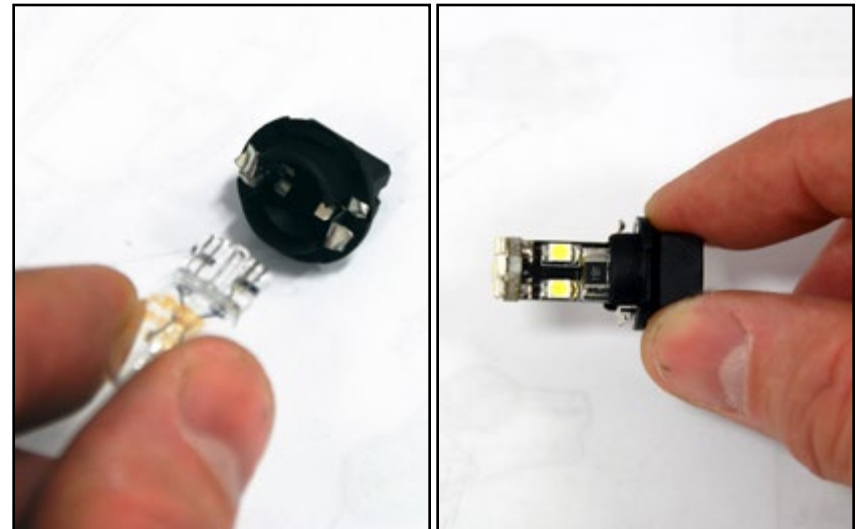
Step 3:

Twist the bulb socket 1/4 turn counter-clockwise then pull the map light bulb assembly from the console.



Step 4:

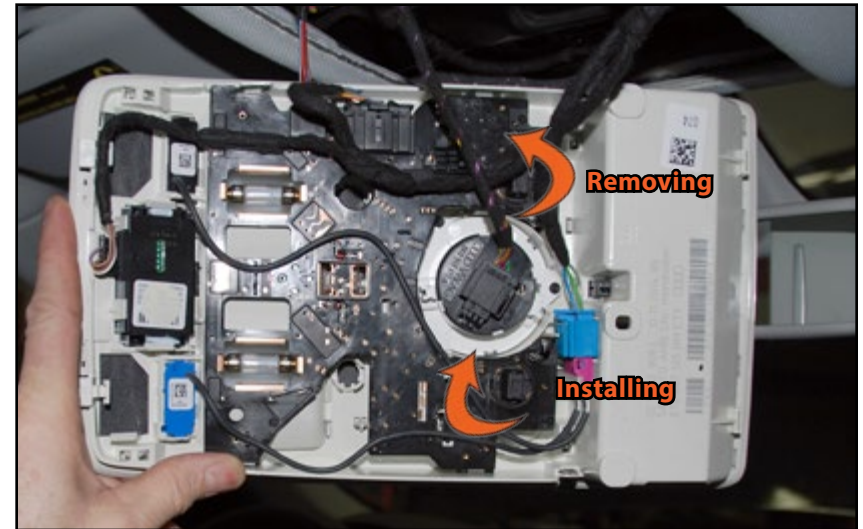
Pull the wedge-type bulb out of the socket and replace it with the LED by pushing it into place.



FRONT DOME AND MAP LIGHT BULBS

Step 5:

While aligning the tabs on the socket with the slots in the console (see step 3), place the socket into the console, then twist it 1/4 turn clockwise to lock it into place. Repeat the steps for the other bulb.



Step 6: Non-Marring Trim Tool

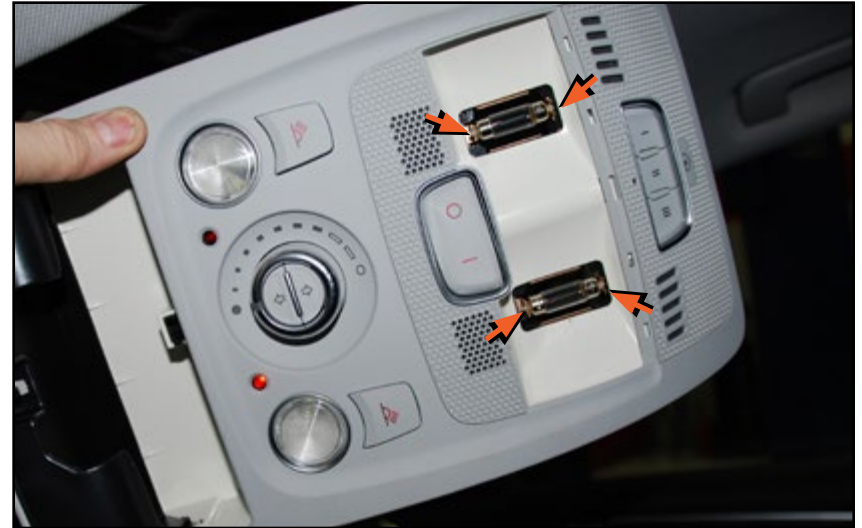
Remove the dome light lens by pushing it out from the inside as shown in the picture. Be sure to push on the lens near the hidden clips (identified in step one, page 15).



FRONT DOME AND MAP LIGHT BULBS

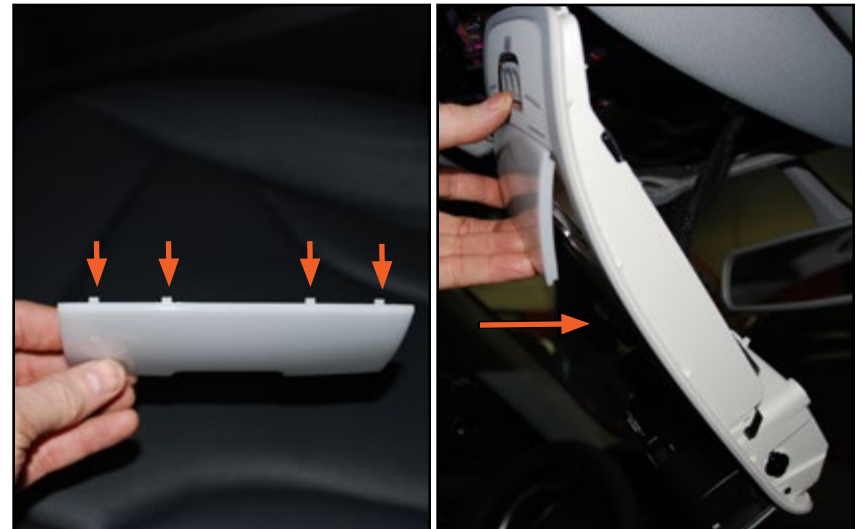
Step 7:

The bulbs are held in place by two double-pronged contacts that extend outward. Remove them by pushing down on the end of each bulb from the inside. Install the LED's in the same position between the two contacts, with the LED's facing outward.



Step 8:

Replace the cover by inserting the four small tabs in first, then snapping the two large tabs into place.



FRONT DOME AND MAP LIGHT BULBS

Step 9: T25 Torx Driver

To replace the overhead console, insert the two rear tabs first, then guide the front section into place to engage the spring clips located on each side. Install the T25 Torx screw.



REAR DOME AND MAP LIGHT BULBS

Step 1: Non-Marring Trim Tool

Place the trim tool into the cut-out on the front of the Rear Map Light/Dome assembly, and push in the spring clip that holds the assembly in place. While holding in the spring clip, pry down and release the assembly.



REAR DOME AND MAP LIGHT BULBS

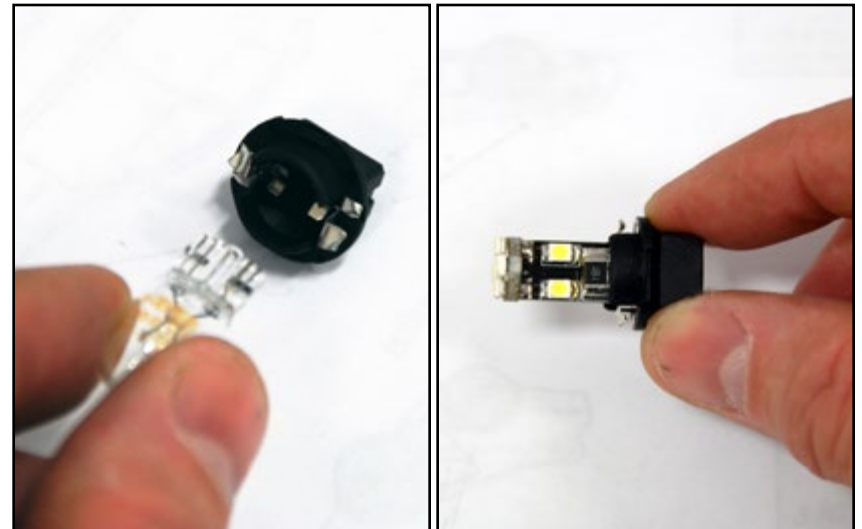
Step 2:

Twist each bulb socket 1/4 turn counter-clockwise and remove it.



Step 3:

Pull the wedge-type bulb from the socket and replace it with a new LED by pushing it into place.



REAR DOME AND MAP LIGHT BULBS

Step 4:

Re install each socket by aligning the slots on the socket with the tabs on the Map Light/Dome assembly, and twisting 1/4 turn clockwise to lock it into place.



Step 5:

Place the plug end of the Map Light/Dome assembly in first, then guide the front section into place to engage the spring clip. Repeat the steps for the other side.



SCHWABEN - BUILD THE ULTIMATE TOOL COLLECTION

At ECS Tuning, we carry a line of high quality Schwaben tools and equipment to help you build your ultimate tool collection. Never before has affordability and quality been so closely related. Our entire Schwaben line is subjected to strict in house testing for strength and durability. See what we have to offer and equip your garage without breaking the bank.



Your Audi Q5/SQ5 Ziza LED interior light installation is complete!



These instructions are provided as a courtesy by ECS Tuning.

Proper service and repair procedures are vital to the safe, reliable operation of all motor vehicles as well as the personal safety of those performing the repairs. Standard safety procedures and precautions (including use of safety goggles and proper tools and equipment) should be followed at all times to eliminate the possibility of personal injury or improper service which could damage the vehicle or compromise its safety.

Although this material has been prepared with the intent to provide reliable information, no warranty (express or implied) is made as to its accuracy or completeness. Neither is any liability assumed for loss or damage resulting from reliance on this material. SPECIFICALLY, NO WARRANTY OF MERCHANTABILITY, FITNESS FOR A PARTICULAR PURPOSE OR ANY OTHER WARRANTY IS MADE OR TO BE IMPLIED WITH RESPECT TO THIS MATERIAL. In no event will ECS Tuning, Incorporated or its affiliates be liable for any damages, direct or indirect, consequential or compensatory, arising out of the use of this material.