



Ziza® Interior Lighting Package Installation Procedures

Click on the kit number that matches your car's lighting package, and go directly to the product page at ecstuning.com.

ES2575595

with glove box; no footwell

ES2575601

no glove box; no footwell

ES2575607

no glove box; with footwell

ES2575608

with glove box; with footwell

for Porsche 996
(1998-2005)

This tutorial is provided as a courtesy by ECS Tuning.

Proper service and repair procedures are vital to the safe, reliable operation of all motor vehicles as well as the personal safety of those performing the repairs. Standard safety procedures and precautions (including use of safety goggles and proper tools and equipment) should be followed at all times to eliminate the possibility of personal injury or improper service which could damage the vehicle or compromise its safety.

Although this material has been prepared with the intent to provide reliable information, no warranty (express or implied) is made as to its accuracy or completeness. Neither is any liability assumed for loss or damage resulting from reliance on this material. SPECIFICALLY, NO WARRANTY OF MERCHANTABILITY, FITNESS FOR A PARTICULAR PURPOSE OR ANY OTHER WARRANTY IS MADE OR TO BE IMPLIED WITH RESPECT TO THIS MATERIAL. In no event will ECS Tuning, Incorporated or its affiliates be liable for any damages, direct or indirect, consequential or compensatory, arising out of the use of this material.

Ziza Interior Lighting Package Installation

ES2575595__ES257560__ES2575607__ES2575608



Fits Porsche 996 (1998-2005)

LED Installation Instructions

Interior Lighting Kit for Porsche 996 (1998-2005)

ES2575595__ES2575601

ES2575607__ES2575608

Tools

Trim removal tool – ES517779 (Kit)

Kit Contents

5-chip wedge base white LED (qty 4)

42mm white LED festoon (qty 3)

31mm white LED festoon (qty 1)

This tutorial explains how to install the LEDs in your Ziza Interior Lighting Kit.



Make the job easier and prevent damage to headliners and other interior trim with **ECS Tuning Trim and Molding Removal Tool Sets: [ES2500877](#) and [ES517779](#).**

Ziza Interior Lighting Package Installation

ES2575595__ES257560__ES2575607__ES2575608



Fits Porsche 996 (1998-2005)

What are LEDs?

LEDs are Light Emitting Diodes, solid state devices that emit light when connected to electrical current. They have no moving parts or wire filaments to burn out. They emit a whiter light, run cooler, and last longer than the incandescent (filament style bulbs) we are replacing in this tutorial.

Unlike filament bulbs, LEDs are polarity sensitive. They have plus and minus (positive and negative) electrical terminals that must match the polarity of the applied voltage. Installing the bulbs "backwards" in the light bulb sockets (with reversed polarity) will not harm them, but they will not light. Flipping the bulb 180 degrees in the electrical connector cures this problem.

Bulb Types

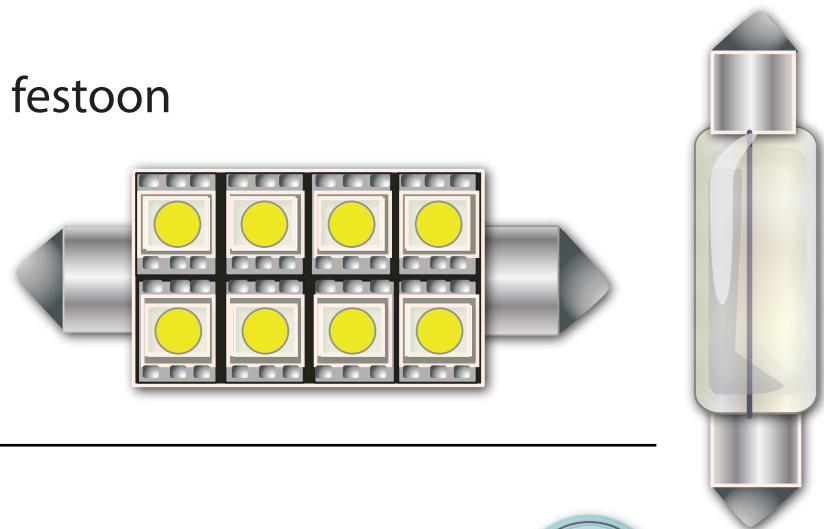
This kit includes two bulb types, classified by their general shape.

FESTOON - Conventional incandescent festoon bulbs have a shape and general appearance that is similar to a glass fuse.

Metal caps attached to both ends of a glass tube are sealed to the tube and attached to the bulb filament. End caps mount the bulb in its holder and also conduct electrical current.

LED festoon lights have the same pointed end caps, but are attached to a bank of LEDs instead of a filament tube.

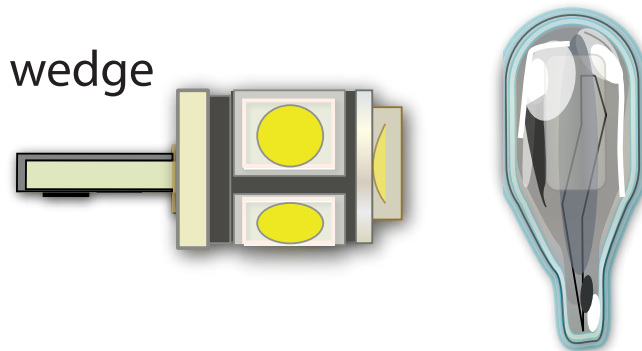
festoon



WEDGE - Wedge style bulbs get their name from the shape of the bulb base. The tapered end of the bulb "wedges" into the bulb socket.

LED wedge lights fit the bulb socket like a filament bulb, but are polarity sensitive.

wedge



Ziza Interior Lighting Package Installation

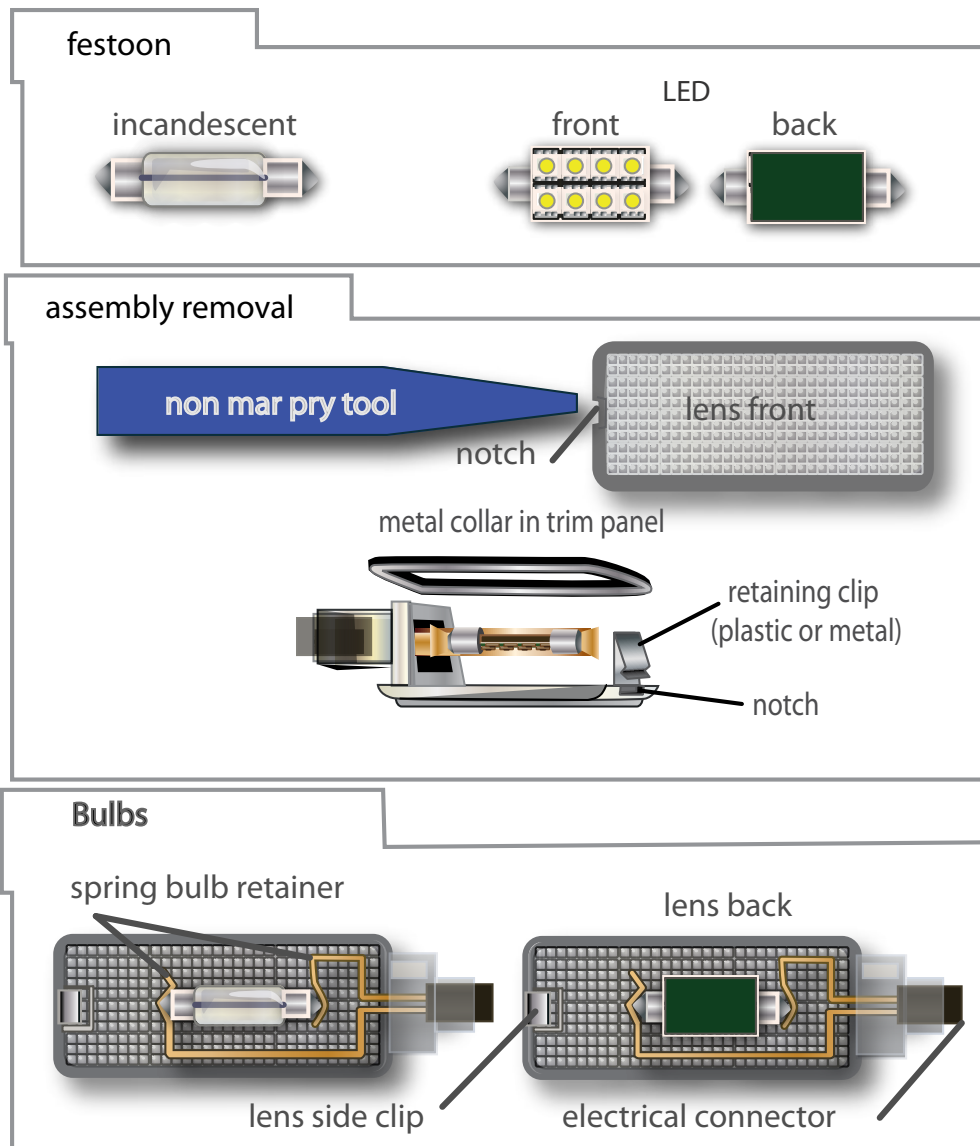
ES2575595__ES257560__ES2575607__ES2575608



Fits Porsche 996 (1998-2005)

General Tips

- When prying down on the assemblies to remove them, pry on the notched end of the lens. Insert the narrow tool tip **between** the lens plastic and any metal collar used to reinforce the lens mounting hole. Push in on the retaining clip first to compress and release it. Then pry down.
- The spring bulb retainer is also the circuit conductor. If necessary, gently bend the metal retainer so it holds the bulb tight. This will help prevent intermittent or flickering LED operation caused by a loose connection.
- Install the bulbs with the LEDs facing toward the lens.



Ziza Interior Lighting Package Installation

ES2575595__ES257560__ES2575607__ES2575608



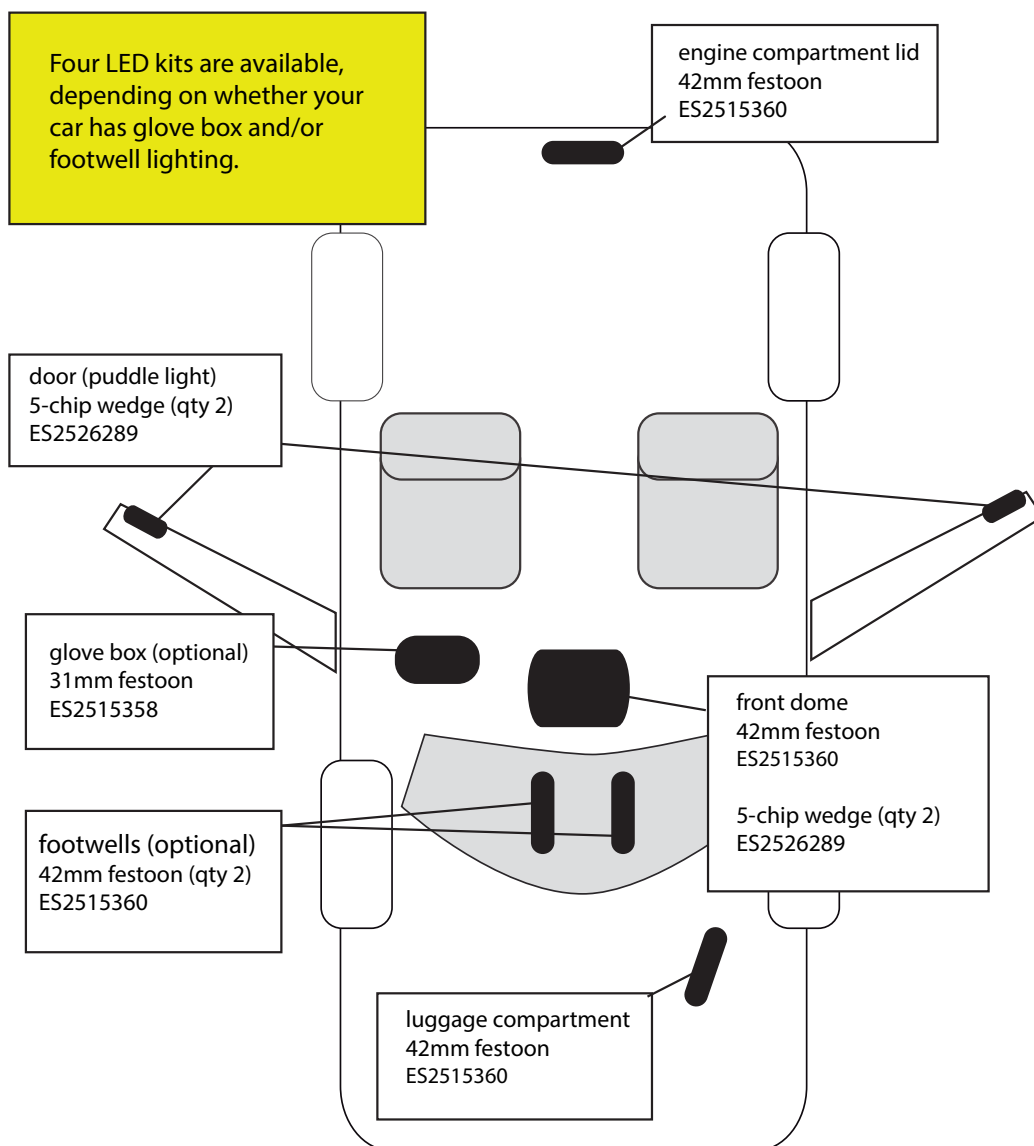
Fits Porsche 996 (1998-2005)

Ziza Interior Lighting Kit Locations

Make _____ Porsche _____

Model _____ 996 _____

For kit numbers _____ ES2575595__ES2575601__ES2575607__ES2575608



Ziza Interior Lighting Package Installation

ES2575595__ES257560__ES2575607__ES2575608



Fits Porsche 996 (1998-2005)

Front Dome Light LED Installation



Front Dome - Step 1

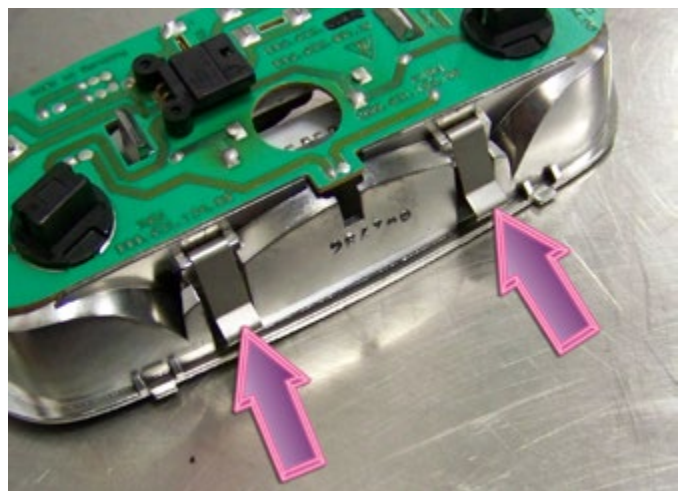
Insert the flat tip of the trim removal at the front of the dome light fixture. Compress the spring clips holding the light in the headliner as you pry down the front edge of the fixture.

Lower and unplug the light assembly.



Front Dome - Step 2

For reference: This photo shows the exact location of the spring clips that hold the dome light assembly in the headliner.



Ziza Interior Lighting Package Installation

ES2575595__ES257560__ES2575607__ES2575608



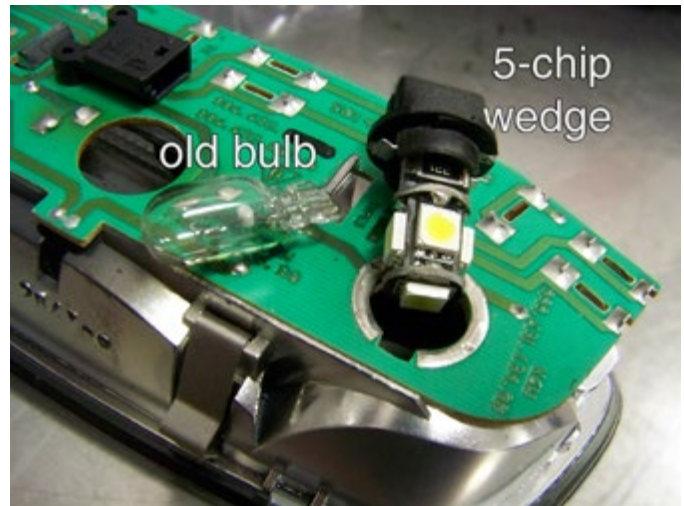
Fits Porsche 996 (1998-2005)

Front Dome - Step 3

On the back of the light assembly, twist the two black bulb holders a quarter turn counterclockwise, and remove them.

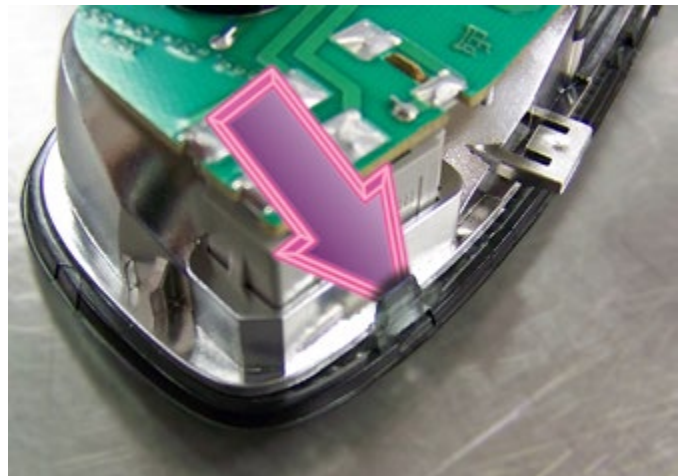
Pull the old bulb straight out of the holder and insert a new 5-chip wedge base LED in its place.

The 5-chip LEDs are polarity sensitive. If an LED array does not work when initially installed and tested, remove the bulb holder and rotate it 180 degrees in its socket to get it working.



Front Dome - Step 4

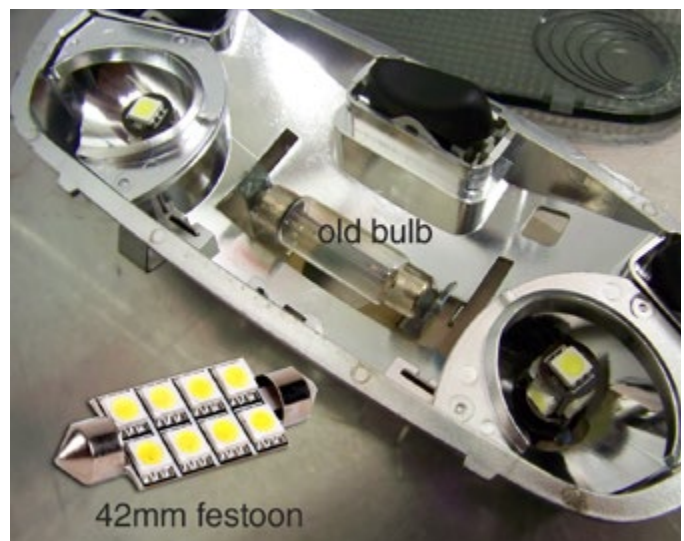
Using the trim removal tool, pry gently on the plastic retaining tabs to remove the lens from the front of the light housing.



Front Dome - Step 5

With the lens removed, replace the glass festoon filament bulb in the center light holder with a 42mm festoon LED array.

Test the LED array before replacing the lens. The LED array is polarity sensitive. If it does not light when initially installed and tested, flip it end-for-end to get it working.



Ziza Interior Lighting Package Installation

ES2575595__ES257560__ES2575607__ES2575608



Fits Porsche 996 (1998-2005)

Front Dome Light - Step 6

With the festoon LED array installed and tested, snap the lens cover back in place on the light housing.



Front Dome Light - Step 7

Plug in the light assembly electrical connection.

Lift the rear of the light assembly into the headliner while making sure the tabs at the rear of the assembly are properly engaged.

Then tilt the front of the light assembly upward until the retainer clips snap in place.



Glove Box

(Note: 1999-2001 996 models have no glove box lights.)

Pry down at the notched end of the glove box light to remove it from the glove box liner.

Replace the original festoon bulb with the 31mm festoon LED array.

If the LED array does not work when initially installed, flip it end-for-end to get it working.



Ziza Interior Lighting Package Installation

ES2575595__ES257560__ES2575607__ES2575608



Fits Porsche 996 (1998-2005)

Door Lights - Step 1

Using the trim removal tool, pry the door lights from the door panels.



Door Lights - Step 2

Pull the bulb holder straight out of the fixture. **Careful:** The glass bulbs may be very hot.

Pull the old glass bulb from the bulb holder and replace it with a 5-chip wedge base LED. If the LED array doesn't light when initially installed, remove it and rotate it 180 degrees on the bulb holder to get it working.

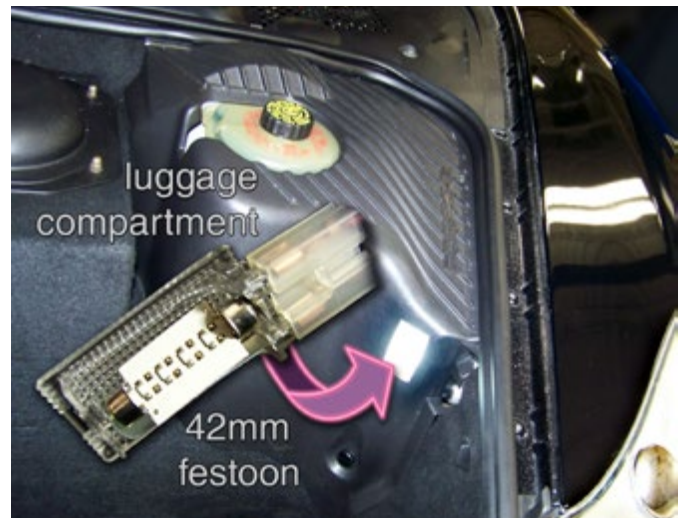


Luggage Compartment

Using the trim removal tool, pry the notched end of the light fixture to remove it from the luggage compartment liner.

Remove the original glass bulb and install a 42mm festoon LED array.

If the LED array does not light when initially installed, flip it end-for-end in the bulb holder to get it working.



Ziza Interior Lighting Package Installation

ES2575595__ES257560__ES2575607__ES2575608



Fits Porsche 996 (1998-2005)

Engine Compartment

The engine compartment light is located in a plastic housing near the auxiliary cooling fan in the engine compartment lid.

Using the trim removal tool, pry the notched end of the light fixture to remove it.

Remove the original glass bulb and install a 42mm festoon LED array.

If the LED array does not light when initially installed, flip it end-for-end in the bulb holder to get it working.



Footwell (Optional)

Your 996 may be equipped with optional footwell lights that use 42mm festoon bulb holders.

The installation procedure for footwell lights is the same as it is for the luggage and engine compartment lights.

Pry the lights out of the footwell area, and replace the original festoon glass bulbs with 42mm festoon LED arrays.



This concludes the installation of the Ziza Interior Light Kit.



Prevent damage to interior panels, the headliner, and trim.

Use a plastic, non-marring trim removal tool.

Two complete kits are available.

Make the job easier and prevent damage to headliners and other interior trim with ECS Tuning Trim and Molding Removal Tool Sets: [ES2500877](#) and [ES517779](#).