



Audi B6 A4 Street Shield Skid Plate Installation Instructions



Proper service and repair procedures are vital to the safe, reliable operation of all motor vehicles as well as the personal safety of those performing the repairs. Standard safety procedures and precautions (including use of safety goggles and proper tools and equipment) should be followed at all times to eliminate the possibility of personal injury or improper service which could damage the vehicle or compromise its safety.

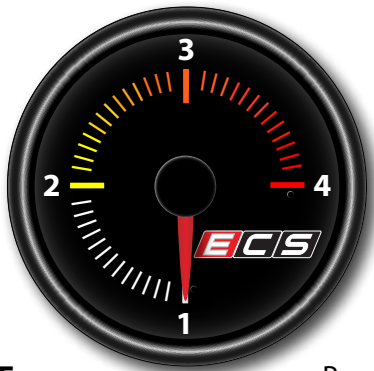
INTRODUCTION

Audi B6 A4 Street Shield Skid Plate ES#2845867

ECS Tuning Street Shield Aluminum Skid Plates offer the following features:

- Sturdy Aluminum construction
- In-house designed by ECS Tuning engineers
- Easy installation
- Shields come complete with all necessary mounting hardware
- Riv-nut tool included

ECS Difficulty Gauge



1 - Easy Pro - 4
2 - Moderate Advanced - 3

Is your original engine shield missing? Are you concerned that it will not protect your engine and undercarriage from the abuse it will take from today's roads? Installing an ECS Tuning Street Shield Skid Plate is the answer. An easy afternoon project, installing one of our shields can be completed in about an hour of your time. Before you begin, read and familiarize yourself with these instructions and make sure you have all the required tools on hand. Thank you for purchasing our ECS Tuning Street Shield Skid Plate. We appreciate your business!

TABLE OF CONTENTS

Kit Contents.....	pg.4
Required Tools and Equipment.....	pg.5
Shop Supplies and Materials.....	pg.5
Installation and Safety Notes	pg.6
Installing the B6 A4 Street Shield Skid Plate.....	pg.7
Schwaben Tools	pg.18

Symbols:

The following symbols may be used throughout these instructions indicating special attention:



FORK IN THE ROAD: When there are different options within any given kit, we will direct you to the proper page and step to continue.



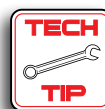
YIELD: Pause for a moment to double check component installation before you continue. Ignoring this can cost you time later during the installation.



CAUTION: Pay close attention to these warnings and instructions. Difficult installation, personal injury or component damage may occur if ignored.



STOP: The upcoming steps require specific preparation and/or assistance in the interest of safety. Please read ahead in the instructions and prepare before continuing.

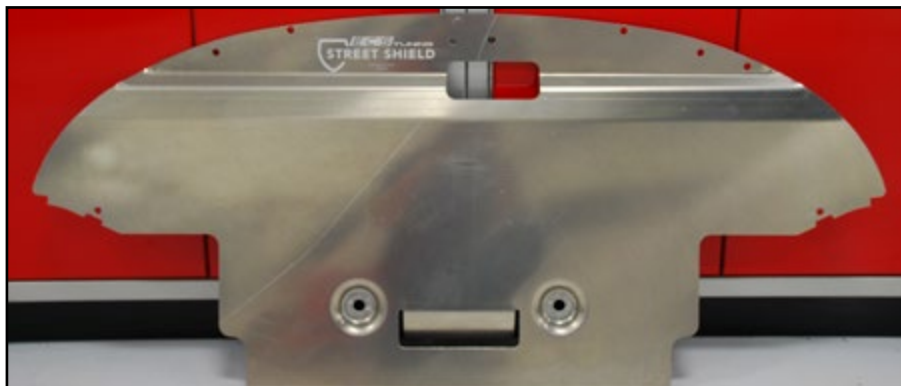


TECH TIP: Tips and tricks to make the job go much easier.



NOTE: Additional information that may be useful to the installation depending on your application.

AUDI B6 A4 STREET SHIELD SKID PLATE KIT CONTENTS



Street Shield Skid Plate



Short Quarter-Turn Screws (7)



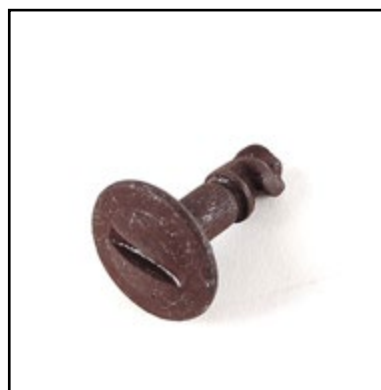
M10 x 30 Bolts w/washers (2)



Riv-Nuts (2)



Riv-Nut Installation Tool



Long Quarter-Turn Screws (1)



Quarter-Turn Clips (8)

REQUIRED TOOLS

Note: The tools required for each step will be listed by the step number throughout these instructions.

Below is a list of the tools we used to install the Audi B6 A4 Street Shield Skid Plate. Additional tools may be required for any issues that arise during installation such as rust, corrosion, or broken and stripped fasteners.

- 3/8" Drive Torque Wrench Available at ecstuning.com [ES#2221245](#)
- Flat Blade Screwdriver(s) Available at ecstuning.com [ES#2225921](#)
- 3/8" Sockets: 10mm, 17mm Available at ecstuning.com [ES#2763772](#)
- Wrenches: 18mm Available at ecstuning.com [ES#2765907](#)
- 3/8" Deep Sockets: 18mm
- 3/8" Drive Ratchet, Extensions
- Crescent Wrench
- Hex bit (Allen) Wrench: 4mm

SHOP SUPPLIES AND MATERIALS

- Hand Cleaner/Degreaser Available at ecstuning.com [ES#2167336](#)
- Shop Rags Available at your local auto parts store

INSTALLATION NOTES

- **RH** refers to the *passenger side* of the vehicle.
- **LH** refers to the *driver side* of the vehicle.
- Always use the proper torque specifications.
- If applicable to this installation, torque specifications will be listed throughout the document and at the end as well.
- Please read all of these instructions and familiarize yourself with the complete process **BEFORE** you begin.

GENERAL PREPARATION AND SAFETY INFORMATION

ECS Tuning cares about your health and safety. Please read the following safety information. This information pertains to automotive service in general, and while it may not pertain to every job you do, please remember and share these important safety tips.

- Park your car in a safe, well lit, level area.
- Shut the engine off and remove the key from the ignition switch.
- Make sure any remote start devices are properly disabled.
- **ALWAYS** wear safety glasses.
- Make sure the parking brake is applied until the vehicle is safely lifted and supported.
- If using an automotive lift, be sure and utilize the factory specified lift points. Lifting a vehicle in an incorrect location can cause damage to the suspension/running gear.
- When lifting a vehicle using a jack, always utilize the factory specified lift points. Lifting a vehicle in an incorrect location can cause damage to the suspension/running gear. **ALWAYS** support the vehicle with jack stands.
- **ALWAYS** read and follow all safety information and warnings for the equipment you are using.



Never get underneath a vehicle that is supported only by a jack. Always make sure that the vehicle is securely supported on jack stands.

INSTALLING THE B6 A4 STREET SHIELD SKID PLATE

Step 1:

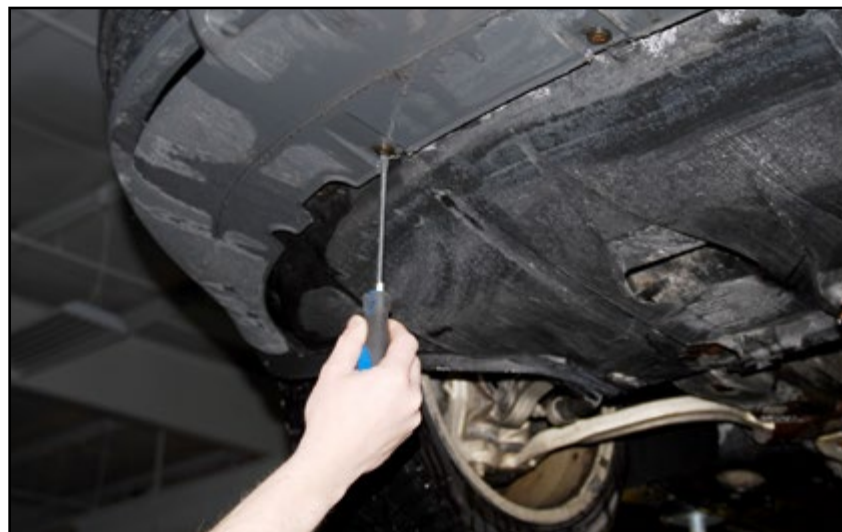
Safely raise and support the vehicle.



Step 2:

Flat Blade Screwdriver

Remove all of the original fasteners and remove the original lower insulation panel from underneath the engine.



INSTALLING THE B6 A4 STREET SHIELD SKID PLATE

Step 3: 10mm Socket, Ratchet

Remove the original insulation panel support bracket by removing the two mounting bolts (arrows).



Step 4:

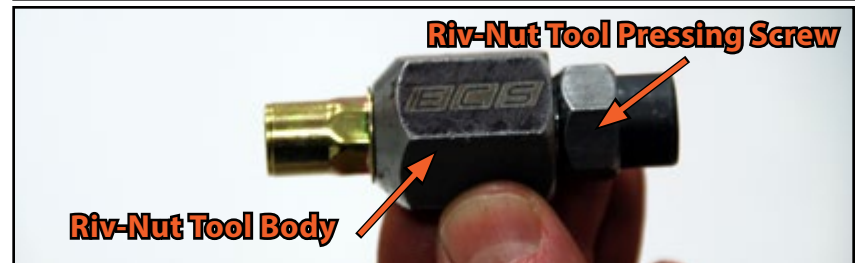
Locate the two hexagon shaped holes in the subframe (arrows).



INSTALLING THE B6 A4 STREET SHIELD SKID PLATE

Step 5:

Prepare a riv-nut for installation by threading it onto the center screw of the tool until it is fully seated. Also, familiarize yourself with the Riv-Nut tool terminology as shown in the picture.



Step 6:

Insert the Riv-Nut into one of the hexagon shaped holes in the subframe (identified in step four).



INSTALLING THE B6 A4 STREET SHIELD SKID PLATE

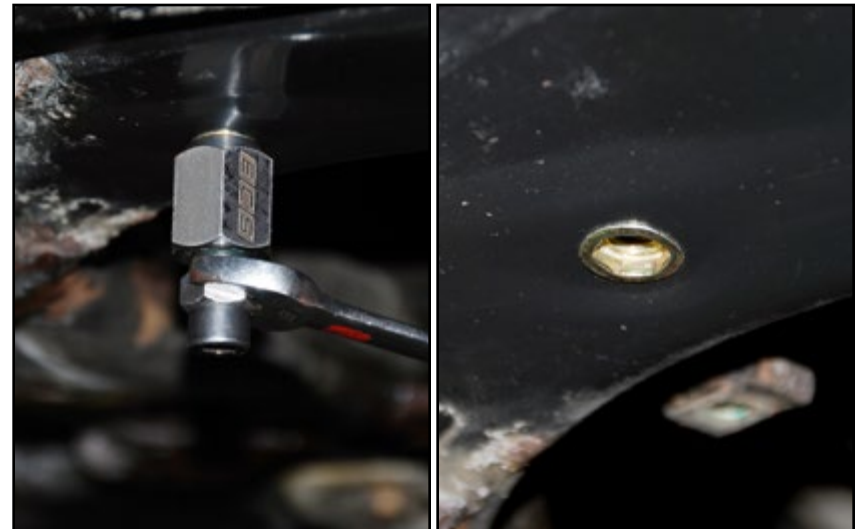
Step 7: Crescent Wrench, Torque Wrench, 18mm socket

Make sure the riv-nut is pressed in flush with the subframe, then while holding the tool body stationary with a wrench, torque the pressing screw in a clockwise direction to 27 Nm (20 Ft-Lbs).



Step 8: 18mm Wrench

Loosen the riv-nut tool by turning the pressing screw counter-clockwise, then unthread the center screw from the riv-nut and remove the tool. The installed riv-nut should be flush with the subframe as shown in the picture on the right.



INSTALLING THE B6 A4 STREET SHIELD SKID PLATE

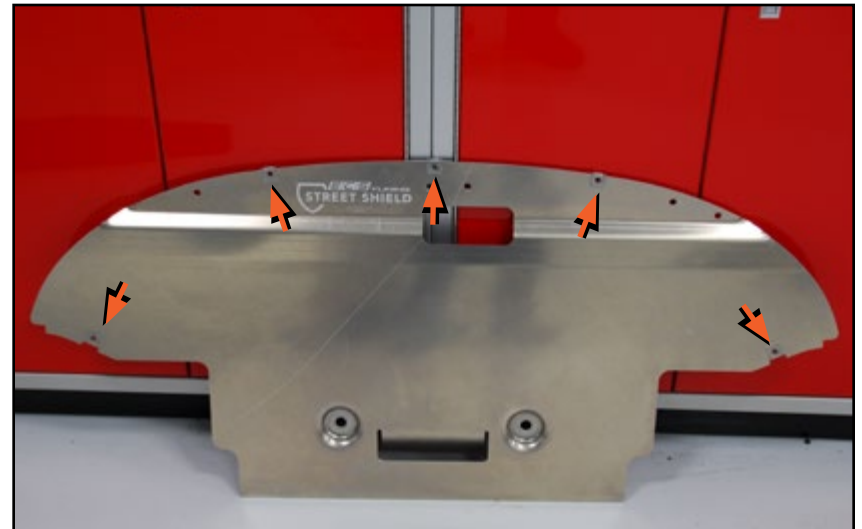
Step 9:

Repeat steps five through eight to install the second Riv-Nut.



Step 10:

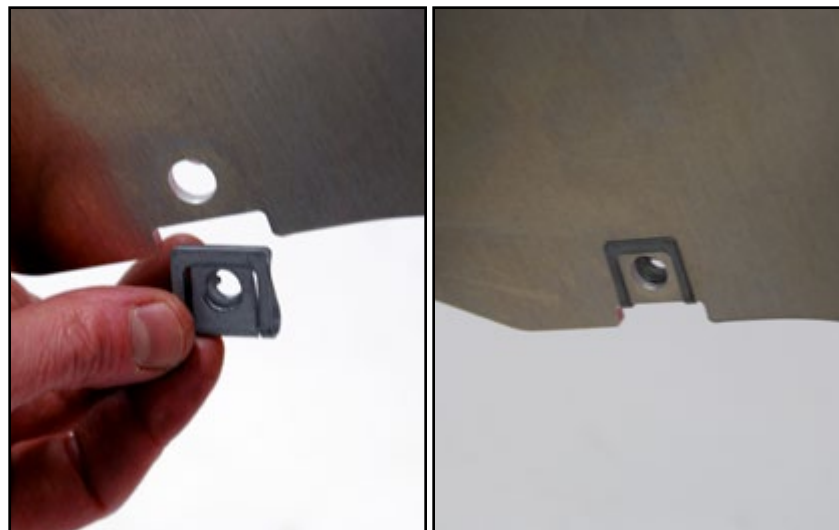
Install five quarter-turn clips onto the new skid plate in the locations indicated by the arrows in the photo. See steps 11 and 12 for clip orientation.



INSTALLING THE B6 A4 STREET SHIELD SKID PLATE

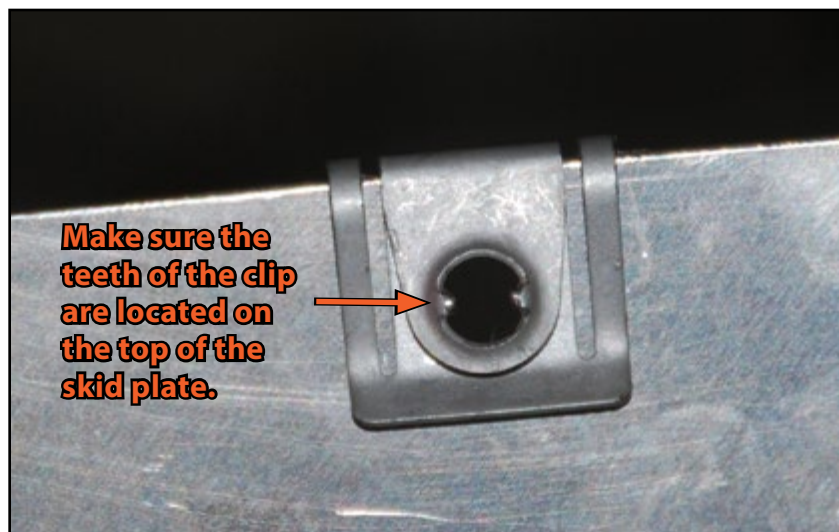
Step 11:

The clips are easy to install, they will simply slip over the edge of the skid plate. Push them on until they are fully seated.



Step 12:

Be sure that each of the clips is installed so the “teeth” are located on what will be the top of the skid plate when it is installed on the car.



INSTALLING THE B6 A4 STREET SHIELD SKID PLATE

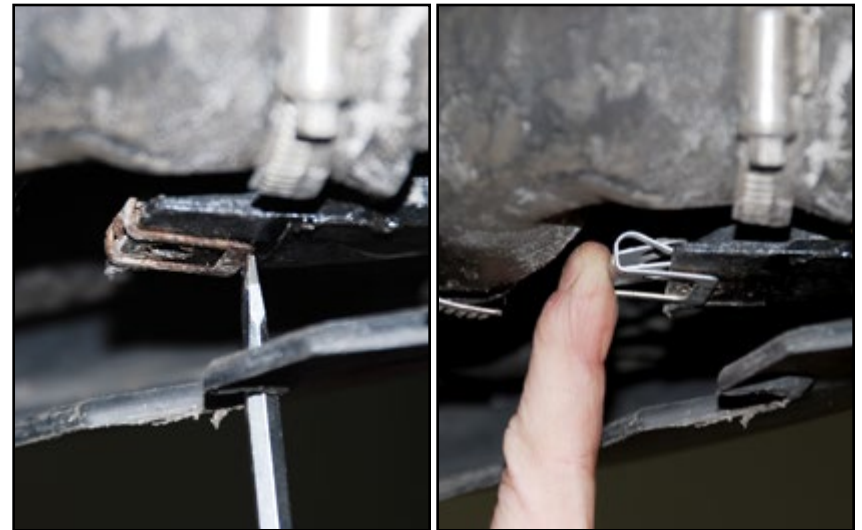
Step 13:

Locate the three original quarter-turn clips on the front of the vehicle



Step 14: Flat Blade Screwdriver

Pry each original clip off and replace it with a new one. The new clips will simply slide in place as they did on the skid plate. Make sure the "teeth" of the clip are facing up.



INSTALLING THE B6 A4 STREET SHIELD SKID PLATE

Step 15:

Fit the new skid plate into place, by first inserting the front section of the skidplate under the bottom lip of the bumper cover, then pulling the sides of the bumper cover around the edges.



Step 16:

Make sure the lower wing of each fender liner is positioned below the skid plate on each side.



INSTALLING THE B6 A4 STREET SHIELD SKID PLATE

Step 17:

Place a washer onto each M10 x 30 bolt, and thread them into the riv-nuts. Do not tighten them at this time.



Step 18: Large Flat Blade Screwdriver

Align the holes on the front section of the skidplate with the clips that were installed in steps 13 and 14, and install three quarter-turn screws in these locations.

Orange Arrows: Use a short quarter-turn screw.

Long Green Arrow: Use the long quarter-turn screw.



Install these screws by pushing them into place, then turning them 1/4 turn until they are locked. Once you feel them stop turning, they are fully engaged into the clip. It is not necessary to tighten them any further.



INSTALLING THE B6 A4 STREET SHIELD SKID PLATE

Step 19: Large Flat Blade Screwdriver

Install three short quarter-turn screws through the holes in the bumper cover and into the clips on the new skidplate.



Step 20: Large Flat Blade Screwdriver

Install a short quarter-turn screw on each wing section.



INSTALLING THE B6 A4 STREET SHIELD SKID PLATE

Step 21: Torque Wrench, 17mm Socket

Torque the M10 x 30 bolts to 27 Nm (20 ft-lb).

Your Street Shield Skid Plate Installation is complete!



SCHWABEN - BUILD THE ULTIMATE TOOL COLLECTION

At ECS Tuning, we carry a line of high quality Schwaben tools and equipment to help you build your ultimate tool collection. Never before has affordability and quality been so closely related. Our entire Schwaben line is subjected to strict in house testing for strength and durability. See what we have to offer and equip your garage without breaking the bank.



Your Audi B6 A4 Street Shield Skid Plate installation is complete!



These instructions are provided as a courtesy by ECS Tuning.

Proper service and repair procedures are vital to the safe, reliable operation of all motor vehicles as well as the personal safety of those performing the repairs. Standard safety procedures and precautions (including use of safety goggles and proper tools and equipment) should be followed at all times to eliminate the possibility of personal injury or improper service which could damage the vehicle or compromise its safety.

Although this material has been prepared with the intent to provide reliable information, no warranty (express or implied) is made as to its accuracy or completeness. Neither is any liability assumed for loss or damage resulting from reliance on this material. SPECIFICALLY, NO WARRANTY OF MERCHANTABILITY, FITNESS FOR A PARTICULAR PURPOSE OR ANY OTHER WARRANTY IS MADE OR TO BE IMPLIED WITH RESPECT TO THIS MATERIAL. In no event will ECS Tuning, Incorporated or its affiliates be liable for any damages, direct or indirect, consequential or compensatory, arising out of the use of this material.