



Audi B7 A4 Street Shield Skid Plate Installation Instructions



Proper service and repair procedures are vital to the safe, reliable operation of all motor vehicles as well as the personal safety of those performing the repairs. Standard safety procedures and precautions (including use of safety goggles and proper tools and equipment) should be followed at all times to eliminate the possibility of personal injury or improper service which could damage the vehicle or compromise its safety.

INTRODUCTION

Audi B7 A4 Street Shield Skid Plate ES#2845868

ECS Tuning Street Shield Aluminum Skid Plates offer the following features:

- Sturdy Aluminum construction
- In-house designed by ECS Tuning engineers
- Easy installation
- Shields come complete with all necessary mounting hardware
- Riv-nut tool included

ECS Difficulty Gauge



1 - Easy Pro - 4
2 - Moderate Advanced - 3

Is your original engine shield missing? Are you concerned that it will not protect your engine and undercarriage from the abuse it will take from today's roads? Installing an ECS Tuning Street Shield Skid Plate is the answer. An easy afternoon project, installing one of our shields can be completed in about an hour of your time. Before you begin, read and familiarize yourself with these instructions and make sure you have all the required tools on hand. Thank you for purchasing our ECS Tuning Street Shield Skid Plate. We appreciate your business!

TABLE OF CONTENTS

Kit Contents.....	pg.4
Required Tools and Equipment.....	pg.5
Shop Supplies and Materials.....	pg.5
Installation and Safety Notes	pg.6
Installing the Audi B7 A4 Street Shield Skid Plate.....	pg.7
Schwaben Tools	pg.18

Symbols:

The following symbols may be used throughout these instructions indicating special attention:



FORK IN THE ROAD: When there are different options within any given kit, we will direct you to the proper page and step to continue.



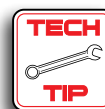
YIELD: Pause for a moment to double check component installation before you continue. Ignoring this can cost you time later during the installation.



CAUTION: Pay close attention to these warnings and instructions. Difficult installation, personal injury or component damage may occur if ignored.



STOP: The upcoming steps require specific preparation and/or assistance in the interest of safety. Please read ahead in the instructions and prepare before continuing.



TECH TIP: Tips and tricks to make the job go much easier.



NOTE: Additional information that may be useful to the installation depending on your application.

AUDI B7 STREET SHIELD SKID PLATE KIT CONTENTS



Street Shield Skid Plate



Quarter-Turn Screws (5)



M10 x 30 Bolts w/washers (2)



Riv-Nuts (2)



Riv-Nut Installation Tool



Skid Plate Front Edge
Hardware Kit



Quarter-Turn Nuts (5)

REQUIRED TOOLS

Note: The tools required for each step will be listed by the step number throughout these instructions.

Below is a list of the tools we used to install the Audi B7 A4 Street Shield Skid Plate. Additional tools may be required for any issues that arise during installation such as rust, corrosion, or broken and stripped fasteners.

- 3/8" Drive Torque Wrench Available at ecstuning.com..... [ES#2221245](#)
- Flat Blade Screwdriver(s) Available at ecstuning.com..... [ES#2225921](#)
- 3/8" Sockets: 10mm, 17mm..... Available at ecstuning.com..... [ES#2763772](#)
- Wrenches: 18mm Available at ecstuning.com..... [ES#2765907](#)
- 3/8" Deep Sockets: 18mm
- 3/8" Drive Ratchet, Extensions
- Crescent Wrench
- Hex bit (Allen) Wrench: 4mm

SHOP SUPPLIES AND MATERIALS

- Hand Cleaner/Degreaser..... Available at ecstuning.com..... [ES#2167336](#)
- Shop Rags Available at your local auto parts store

INSTALLATION NOTES

- **RH** refers to the *passenger side* of the vehicle.
- **LH** refers to the *driver side* of the vehicle.
- Always use the proper torque specifications.
- If applicable to this installation, torque specifications will be listed throughout the document and at the end as well.
- Please read all of these instructions and familiarize yourself with the complete process **BEFORE** you begin.

GENERAL PREPARATION AND SAFETY INFORMATION

ECS Tuning cares about your health and safety. Please read the following safety information. This information pertains to automotive service in general, and while it may not pertain to every job you do, please remember and share these important safety tips.

- Park your car in a safe, well lit, level area.
- Shut the engine off and remove the key from the ignition switch.
- Make sure any remote start devices are properly disabled.
- **ALWAYS** wear safety glasses.
- Make sure the parking brake is applied until the vehicle is safely lifted and supported.
- If using an automotive lift, be sure and utilize the factory specified lift points. Lifting a vehicle in an incorrect location can cause damage to the suspension/running gear.
- When lifting a vehicle using a jack, always utilize the factory specified lift points. Lifting a vehicle in an incorrect location can cause damage to the suspension/running gear. **ALWAYS** support the vehicle with jack stands.
- **ALWAYS** read and follow all safety information and warnings for the equipment you are using.



Never get underneath a vehicle that is supported only by a jack. Always make sure that the vehicle is securely supported on jack stands.

INSTALLING THE B7 A4 STREET SHIELD SKID PLATE

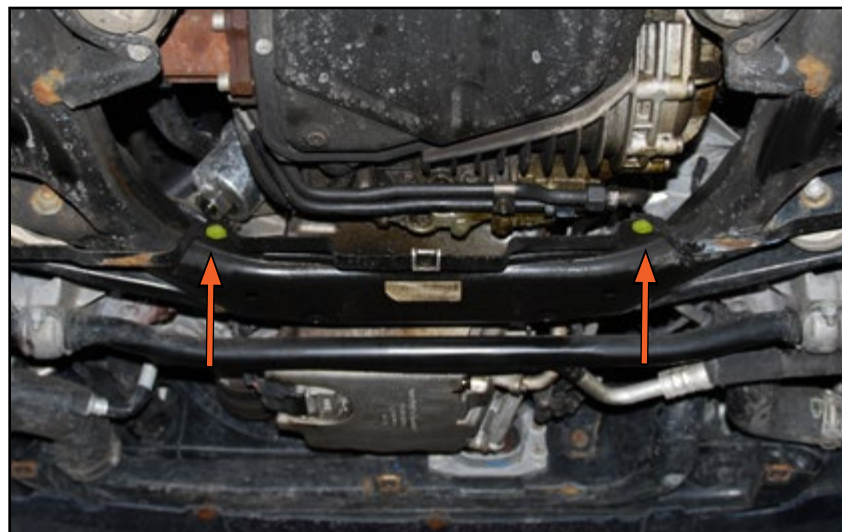
Step 1:

Safely raise and support the vehicle, then remove the original insulation panel from underneath the front.



Step 2: 10mm Socket, Ratchet

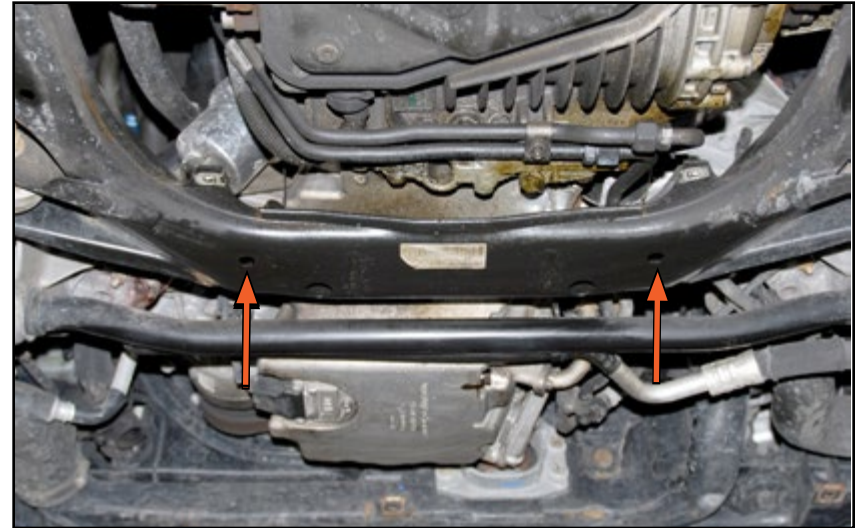
Remove the original insulation panel support bracket by removing the two mounting bolts (arrows).



INSTALLING THE B7 A4 STREET SHIELD SKID PLATE

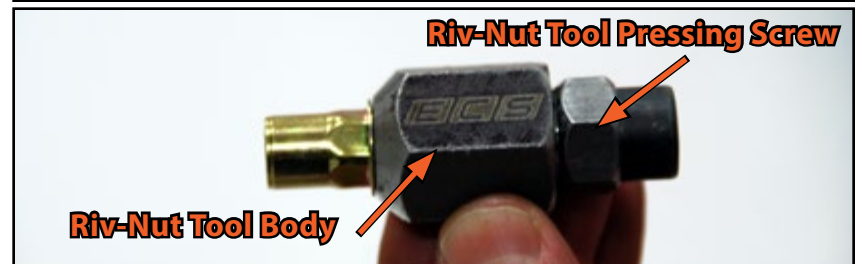
Step 3:

Locate the two hexagon shaped holes in the subframe (arrows).



Step 4:

Prepare a riv-nut for installation by threading it onto the center screw of the tool until it is fully seated. Also, familiarize yourself with the Riv-Nut tool terminology as shown in the picture.



INSTALLING THE B7 A4 STREET SHIELD SKID PLATE

Step 5:

Insert the riv-nut into one of the hexagon shaped holes in the subframe (identified in step three).



Step 6: Crescent Wrench, Torque Wrench, 18mm socket

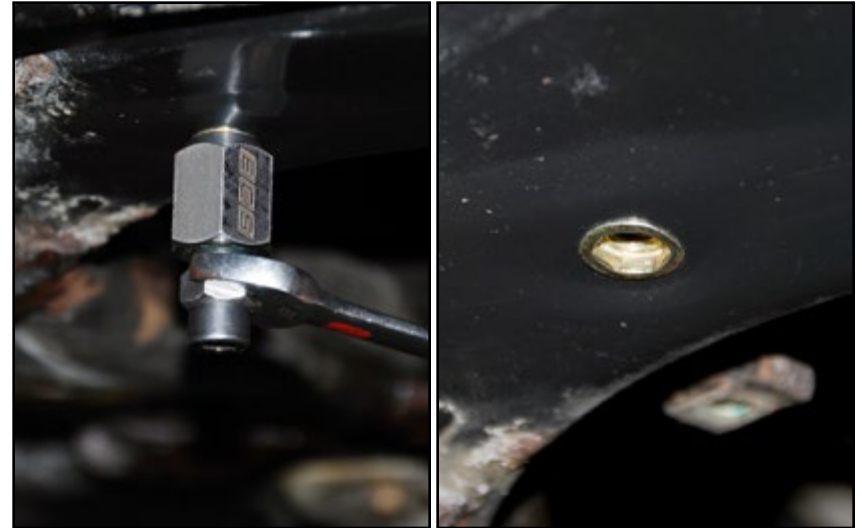
Make sure the riv-nut is pressed in flush with the subframe, then while holding the tool body stationary with a wrench, torque the pressing screw in a clockwise direction to 27 Nm (20 Ft-Lbs).



INSTALLING THE B7 A4 STREET SHIELD SKID PLATE

Step 7: 18mm Wrench

Loosen the riv-nut tool by turning the pressing screw counter-clockwise, then unthread the center screw from the riv-nut and remove the tool. The installed riv-nut should be flush with the subframe as shown in the picture on the right.



Step 8:

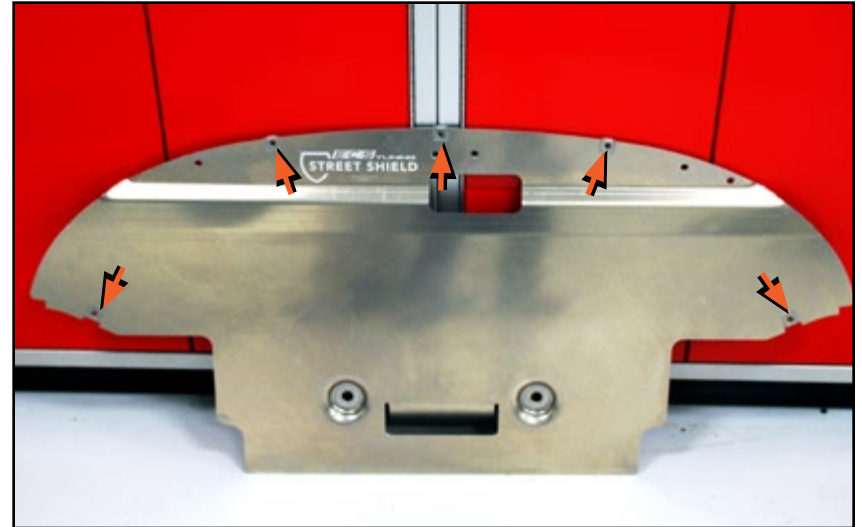
Repeat steps four through seven to install the second riv-nut.



INSTALLING THE B7 A4 STREET SHIELD SKID PLATE

Step 9:

Install five quarter-turn clips onto the new skid plate in the locations indicated by the arrows in the photo.



Step 10:

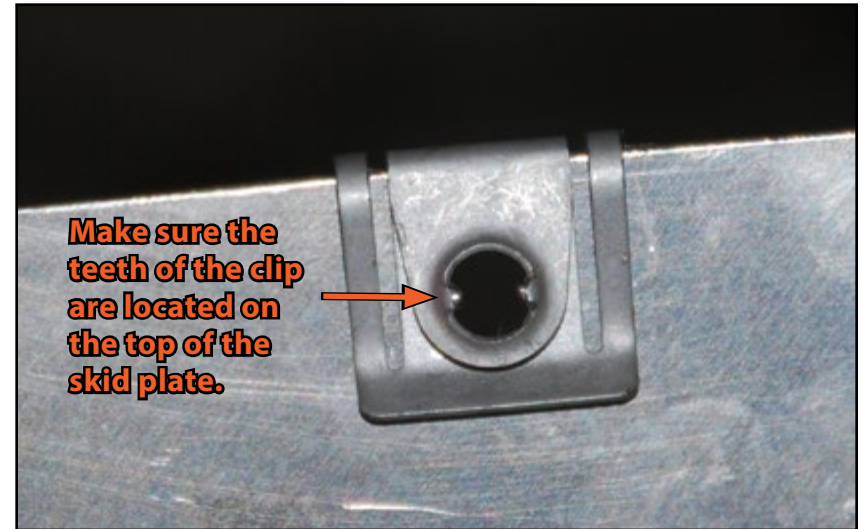
The clips are easy to install, they will simply slip over the edge of the skid plate. Push them on until they are fully seated.



INSTALLING THE B7 A4 STREET SHIELD SKID PLATE

Step 11:

Be sure that each of the clips is installed so the “teeth” are located on what will be the top of the skid plate when it is installed on the car.

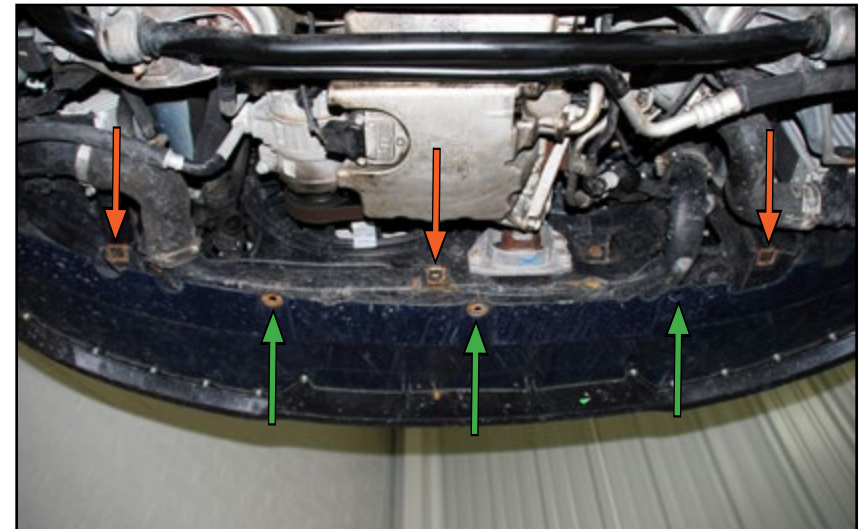


Step 12:

Locate the three original quarter turn clips on the front of the vehicle (orange arrows).



There may still be some fasteners in place in the lower bumper cover that have broken off of the original insulation panel. Check the locations indicated here by the green arrows and remove any remaining fasteners.



INSTALLING THE B7 A4 STREET SHIELD SKID PLATE

Step 13: Flat Blade Screwdriver

Pry each original clip off and replace it with a new one from the Front Edge Hardware Kit. The new clips will simply slide in place as they did on the skid plate. Make sure the threads on the new clips are facing up.



Step 14:

Fit the new skid plate into place, by first inserting the front section of the skid plate under the bottom lip of the bumper cover, then pulling the sides of the bumper cover around the edges.



INSTALLING THE B7 A4 STREET SHIELD SKID PLATE

Step 15:

Make sure the lower wing of each fender liner is positioned below the skid plate on each side.



Step 16:

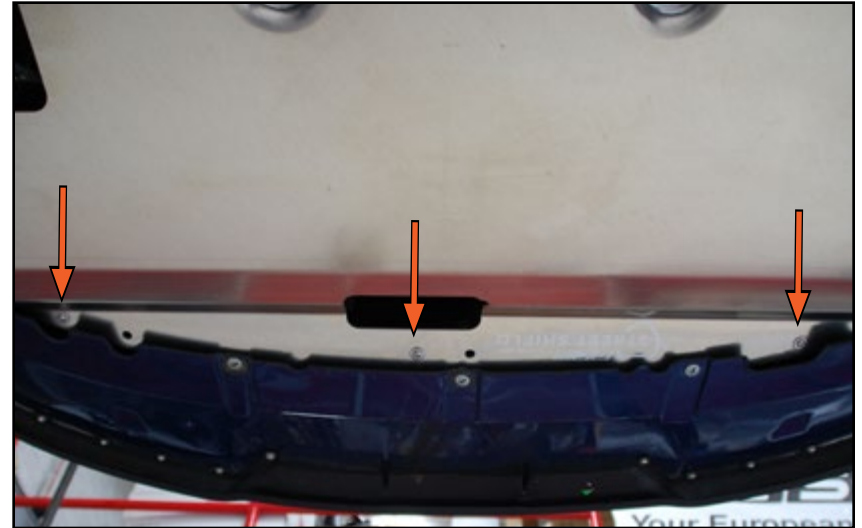
Place a washer onto each M10 x 30 bolt, and thread them into the riv-nuts. Do not tighten them at this time.



INSTALLING THE B7 A4 STREET SHIELD SKID PLATE

Step 17:

Inspect the picture on the right. The three locations indicated by the arrows are the front edge mounting points for the skid plate. These locations coincide with the clips installed in steps 12 and 13. A spacer must be used in each of these three locations between the skid plate and the mounting clip.



Step 18:

Guide a spacer above the skid plate in each location, then install a washer onto each M6 x 30 screw and install the screw through the skid plate and spacer and thread it into the clip. Do not fully tighten the screws at this time.



The easiest method for installing these spacers is to position them above the hole, then use a small screwdriver to center them before inserting the screw.



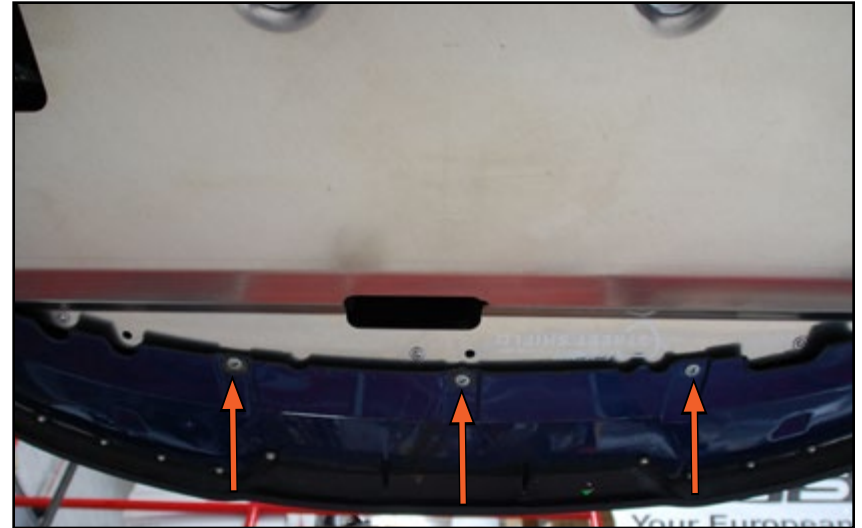
INSTALLING THE B7 A4 STREET SHIELD SKID PLATE

Step 19: Large Flat Blade Screwdriver, 4mm Hex Bit

Once all three spacers have been installed, install the three quarter-turn screws that secure the bumper cover to the skid plate (arrows), then tighten the three front edge mounting screws.



Install the 1/4 turn screws by pushing them into place, then turning them 1/4 turn until they are locked. Once you feel them stop turning, they are fully engaged into the clip. It is not necessary to tighten them any further.



Step 20: Large Flat Blade Screwdriver

Install a quarter-turn screw on each wing section.



INSTALLING THE B7 A4 STREET SHIELD SKID PLATE

Step 21: 17mm Socket, Torque Wrench

Torque the M10 x 30 bolts to 27 Nm (20 ft-lb).

Your B7 Street Shield Skid Plate installation is complete!



SCHWABEN - BUILD THE ULTIMATE TOOL COLLECTION

At ECS Tuning, we carry a line of high quality Schwaben tools and equipment to help you build your ultimate tool collection. Never before has affordability and quality been so closely related. Our entire Schwaben line is subjected to strict in house testing for strength and durability. See what we have to offer and equip your garage without breaking the bank.



Your Audi B7 Street Shield Skid Plate installation is complete!



These instructions are provided as a courtesy by ECS Tuning.

Proper service and repair procedures are vital to the safe, reliable operation of all motor vehicles as well as the personal safety of those performing the repairs. Standard safety procedures and precautions (including use of safety goggles and proper tools and equipment) should be followed at all times to eliminate the possibility of personal injury or improper service which could damage the vehicle or compromise its safety.

Although this material has been prepared with the intent to provide reliable information, no warranty (express or implied) is made as to its accuracy or completeness. Neither is any liability assumed for loss or damage resulting from reliance on this material. SPECIFICALLY, NO WARRANTY OF MERCHANTABILITY, FITNESS FOR A PARTICULAR PURPOSE OR ANY OTHER WARRANTY IS MADE OR TO BE IMPLIED WITH RESPECT TO THIS MATERIAL. In no event will ECS Tuning, Incorporated or its affiliates be liable for any damages, direct or indirect, consequential or compensatory, arising out of the use of this material.