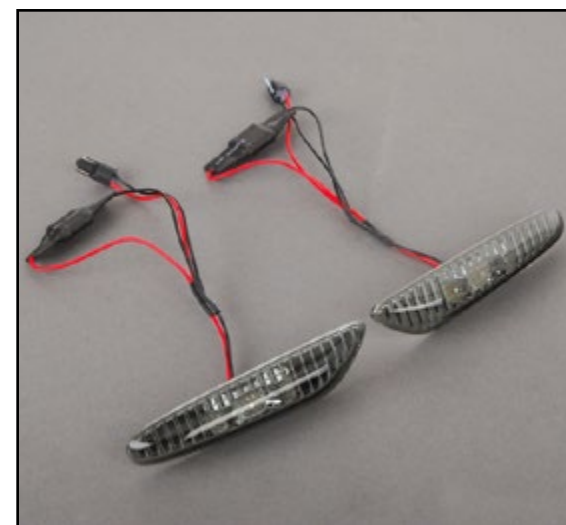
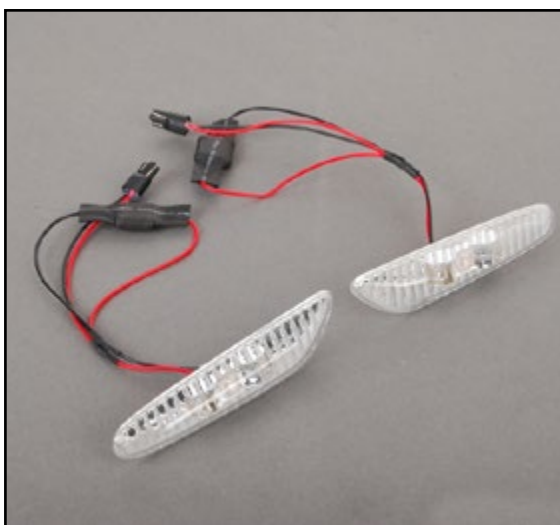




## BMW E9X Zisa LED Sidemarker Set Installation Instructions



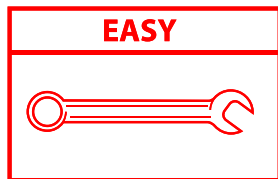
Proper service and repair procedures are vital to the safe, reliable operation of all motor vehicles as well as the personal safety of those performing the repairs. Standard safety procedures and precautions (including use of safety goggles and proper tools and equipment) should be followed at all times to eliminate the possibility of personal injury or improper service which could damage the vehicle or compromise its safety.

## INTRODUCTION

### BMW E9X Ziza LED Sidemarker Set ES#2769954 / ES#2769955

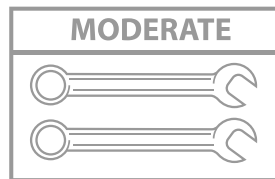
The Ziza LED sidemarker set from ECS Tuning offers the following:

- Sidemarker housings designed to be a perfect fit and a direct replacement to the OEM sidemarkers
- Your choice of either smoked or clear lenses
- Integrated LED's to replace the incandescent bulbs in the sidemarkers on your BMW E9X
- Built in plug-and-play harnesses for ease of installation and elimination of "bulb out" warnings
- Long lasting, high quality LED's
- Brilliantly bright lighting regardless of lens color



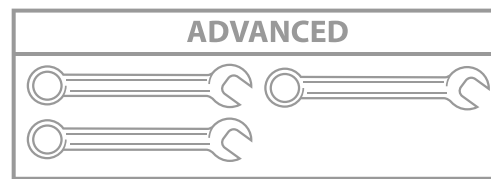
**EASY**

**BASIC SKILLS  
REQUIRED**



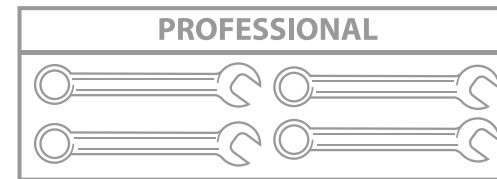
**MODERATE**

**SOME EXPERIENCE  
RECOMMENDED**



**ADVANCED**

**ADVANCED SKILLS &  
EXPERIENCE REQUIRED**



**PROFESSIONAL**

**PROFESSIONAL SKILLS &  
SPECIALTY TOOLS REQUIRED**

Installing this Ziza LED sidemarker set on your BMW E9X is a quick and easy project that requires only basic tools and experience. Enhance the exterior of your BMW E9X by replacing the dull incandescent sidemarkers with LED's. The time investment to benefit ratio is strongly in your favor, as this will only take you about 15 minutes. Thank you for purchasing our ECS Tuning Ziza LED sidemarker set. We appreciate your business!

## TABLE OF CONTENTS

Kit Contents ..... pg.4

Required Tools And Equipment ..... pg.4

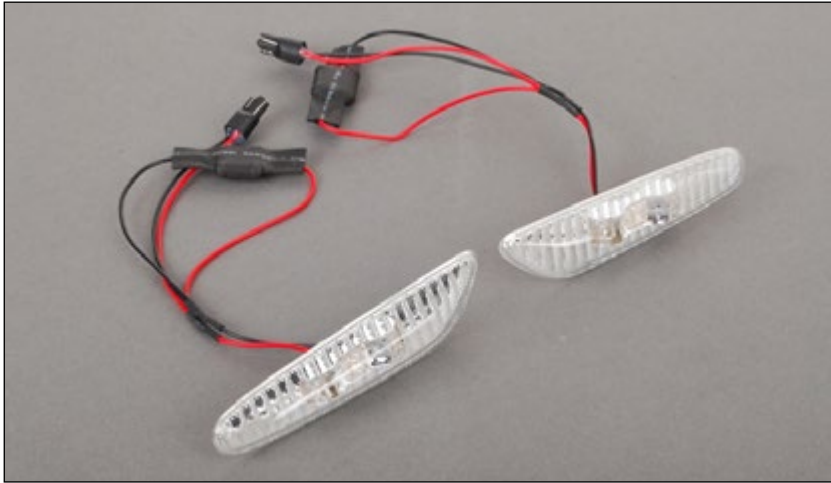
Installation Notes ..... pg.5

Preparation And Safety ..... pg.5

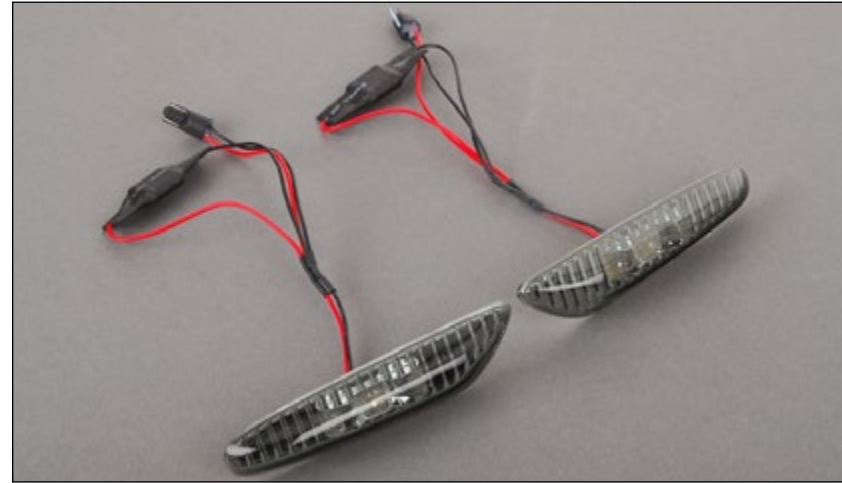
Removing The Original Sidemarker..... pg.6

Installing The New Sidemarker..... pg.8

## KIT CONTENTS



BMW E9X Clear LED Sidemarker Set



BMW E9X Smoked LED Sidemarker Set

## REQUIRED TOOLS



Small Flat Blade Screwdriver

## INSTALLATION NOTES

- RH refers to the passenger side of the vehicle.
- LH refers to the driver side of the vehicle.
- Always use the proper torque specifications.
- If applicable to this installation, torque specifications will be listed throughout the document and at the end as well.
- Please read all of these instructions and familiarize yourself with the complete process before you begin.

## GENERAL PREPARATION AND SAFETY INFORMATION

ECS Tuning cares about your health and safety. Please read the following safety information. This information pertains to automotive service in general, and while it may not pertain to every job you do, please remember and share these important safety tips.

- Park your car in a safe, well lit, level area.
- Shut the engine off and remove the key from the ignition switch.
- Make sure any remote start devices are properly disabled.
- Always wear safety glasses.
- Make sure the parking brake is applied until the vehicle is safely lifted and supported.
- If using an automotive lift, be sure and utilize the factory specified lift points. Lifting a vehicle in an incorrect location can cause damage to the suspension/running gear.
- When lifting a vehicle using a jack, always utilize the factory specified lift points. Lifting a vehicle in an incorrect location can cause damage to the suspension/running gear. Always support the vehicle with jack stands.
- Always read and follow all safety information and warnings for the equipment you are using.

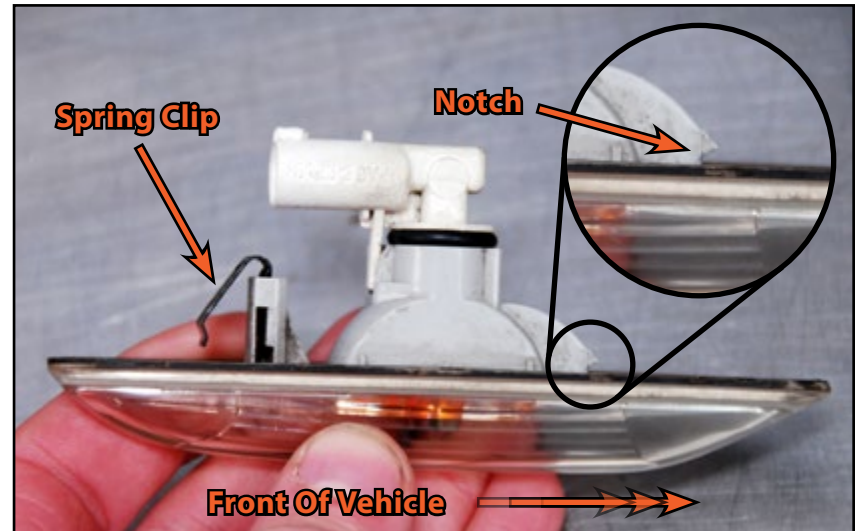


Never get underneath a vehicle that is supported only by a jack. Always make sure that the vehicle is securely supported on jack stands.

## REMOVING THE ORIGINAL SIDEMARKER

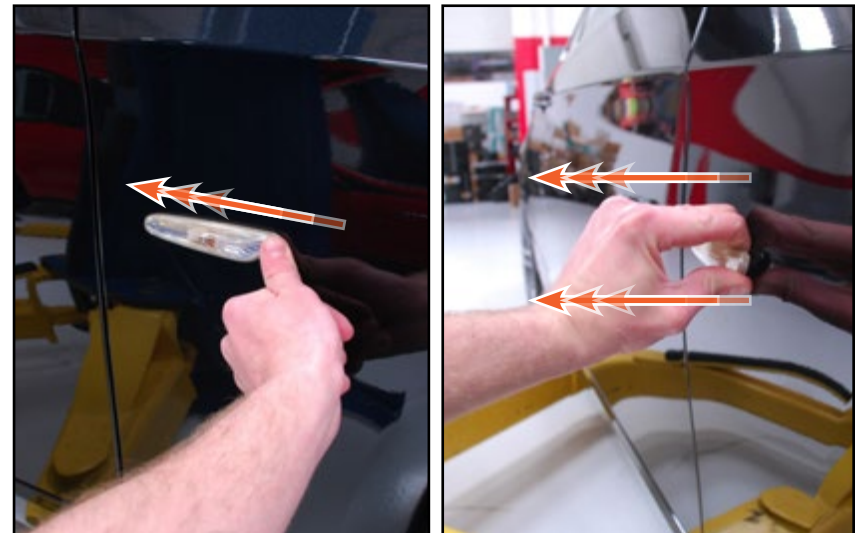
### Step 1:

Let's take a moment to look at the sidemarker and see how it is mounted. Notice the spring clip on the left side, this is used to keep forward pressure on the sidemarker and hold it in place in the fender. We can also see the notch which is cut into the front side of the sidemarker, which is used to hold the sidemarker tight against the fender.



### Step 2:

To remove the sidemarker, begin by pushing the housing towards the rear of the vehicle as shown in the photo. Remember that you are pushing against the spring clip we pointed out in step one. While pushing the sidemarker rearward as far as it will go, gently pull the front of the sidemarker out of the fender.



## REMOVING THE ORIGINAL SIDEMARKER

### Step 3: Small Screwdriver

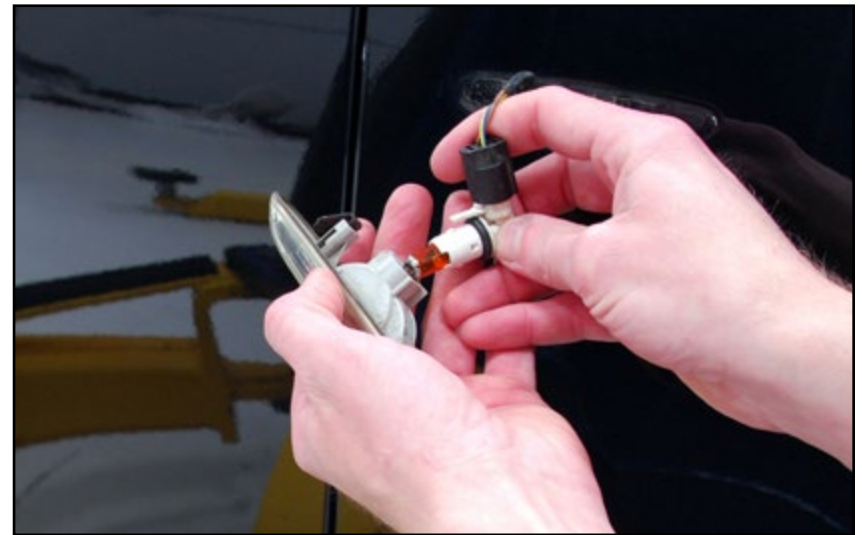
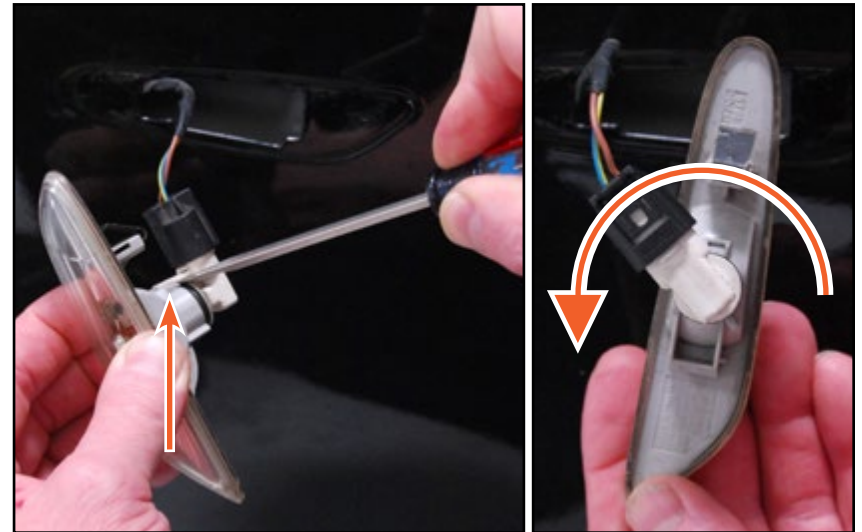
Gently pry up on the bulb holder locking tab, and rotate the bulb holder counter-clockwise to release it from the sidemarker.

#### CAUTION

The bulb locking tab is **EXTREMELY** fragile, be sure to pry as gently as possible, and only pry up the locking tab enough to unlock the bulb holder so you can twist the bulb holder out.

### Step 4:

Remove the bulb holder from the sidemarker, then pull the OEM amber bulb out of the bulb holder.



## INSTALLING THE NEW SIDEMARKER

### Step 1:

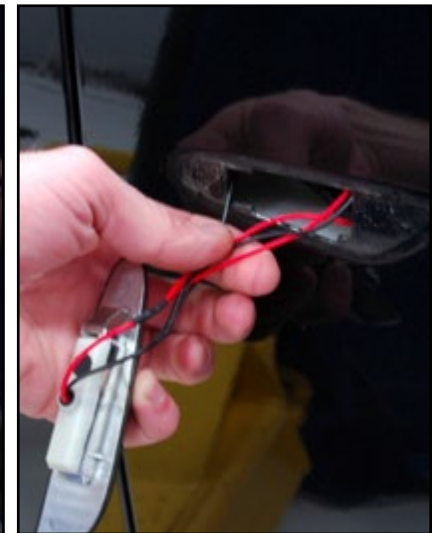
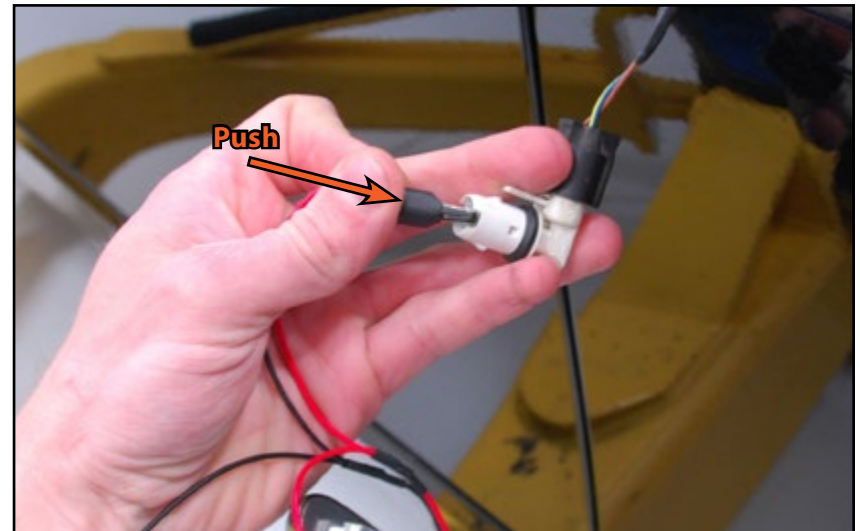
Install the Ziza sidemarker harness into the bulb holder, the Ziza sidemarker harness takes the place of the OEM amber bulb.

#### NOTE

These LED's are polarity specific. If they do not work after installation, try removing the LED, flipping it over, and testing again. The best time to perform this test is after this step.

### Step 2:

Gently feed the bulb holder and the Ziza sidemarker harness into the fender, being sure not to kink or pinch the harness as it goes in.





## INSTALLING THE NEW SIDEMARKER

### Step 3:

To reinstall the sidemarker, begin by inserting the rear of the housing into the fender, then push the housing towards the rear of the vehicle as shown in the photo. Remember that you are pushing against the spring clip. While pushing the sidemarker rearward as far as it will go, gently push the front of the sidemarker into the fender, then allow the sidemarker to slide forward until it is fully seated and locked in place.



### Step 4:

Repeat these steps on the opposite side and perform another test to check both sidemarkers function normally.



Your Ziza LED Sidemarker Set installation is complete!



These instructions are provided as a courtesy by ECS Tuning.

Proper service and repair procedures are vital to the safe, reliable operation of all motor vehicles as well as the personal safety of those performing the repairs. Standard safety procedures and precautions (including use of safety goggles and proper tools and equipment) should be followed at all times to eliminate the possibility of personal injury or improper service which could damage the vehicle or compromise its safety.

Although this material has been prepared with the intent to provide reliable information, no warranty (express or implied) is made as to its accuracy or completeness. Neither is any liability assumed for loss or damage resulting from reliance on this material. SPECIFICALLY, NO WARRANTY OF MERCHANTABILITY, FITNESS FOR A PARTICULAR PURPOSE OR ANY OTHER WARRANTY IS MADE OR TO BE IMPLIED WITH RESPECT TO THIS MATERIAL. In no event will ECS Tuning, Incorporated or its affiliates be liable for any damages, direct or indirect, consequential or compensatory, arising out of the use of this material.