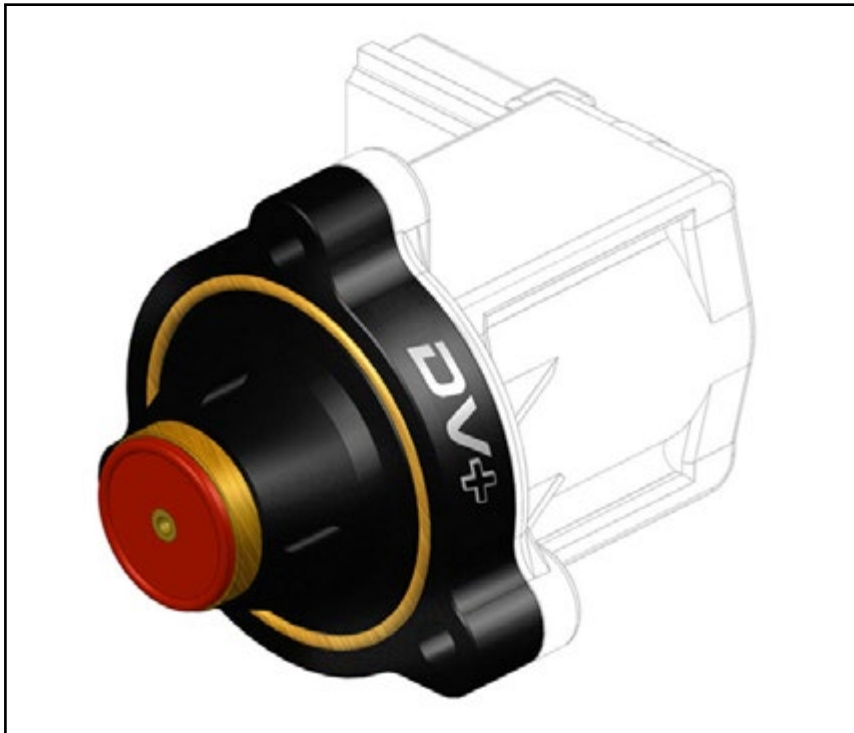




GFB 2.0T DV+ Performance Diverter Valve Installation Instructions







Proper service and repair procedures are vital to the safe, reliable operation of all motor vehicles as well as the personal safety of those performing the repairs. Standard safety procedures and precautions (including use of safety goggles and proper tools and equipment) should be followed at all times to eliminate the possibility of personal injury or improper service which could damage the vehicle or compromise its safety.

INTRODUCTION

GFB 2.0T DV+ Performance Diverter Valve ES#2864616

The GFB DV+ Performance Diverter Valve offers the following:

- Retains the factory solenoid for seamless integration
- Replaces the OE Plastic parts with metal for increased reliability and strength
- Significantly faster response than the OE Diverter Valve
- Lower cost and easier installation than competitive systems

EASY	MODERATE	ADVANCED	PROFESSIONAL
			
BASIC SKILLS REQUIRED	SOME EXPERIENCE RECOMMENDED	ADVANCED SKILLS & EXPERIENCE REQUIRED	PROFESSIONAL SKILLS & SPECIALTY TOOLS REQUIRED

Replacing the Diverter Valve on your 2.0T is a rewarding project that will breathe new life into your 2.0T by replacing the weak OE valve mechanism without requiring you to replace the entire system with a more expensive pneumatic valve which will actually respond more slowly. The time investment to benefit ratio is strongly in your favor since you can complete this install in an afternoon. Thank you for purchasing the GFB 2.0T DV+ Performance Diverter Valve, we appreciate your business!

TABLE OF CONTENTS

Installation Notes pg.3

Preparation and Safety pg.3

GFB DV+ Installation pg.4

INSTALLATION NOTES

- RH refers to the passenger side of the vehicle.
- LH refers to the driver side of the vehicle.
- Always use the proper torque specifications.
- If applicable to this installation, torque specifications will be listed throughout the document and at the end as well.
- Please read all of these instructions and familiarize yourself with the complete process before you begin.

GENERAL PREPARATION AND SAFETY INFORMATION

ECS Tuning cares about your health and safety. Please read the following safety information. This information pertains to automotive service in general, and while it may not pertain to every job you do, please remember and share these important safety tips.

- Park your car in a safe, well lit, level area.
- Shut the engine off and remove the key from the ignition switch.
- Make sure any remote start devices are properly disabled.
- Always wear safety glasses.
- Make sure the parking brake is applied until the vehicle is safely lifted and supported.
- If using an automotive lift, be sure and utilize the factory specified lift points. Lifting a vehicle in an incorrect location can cause damage to the suspension/running gear.
- When lifting a vehicle using a jack, always utilize the factory specified lift points. Lifting a vehicle in an incorrect location can cause damage to the suspension/running gear. Always support the vehicle with jack stands.
- Always read and follow all safety information and warnings for the equipment you are using.

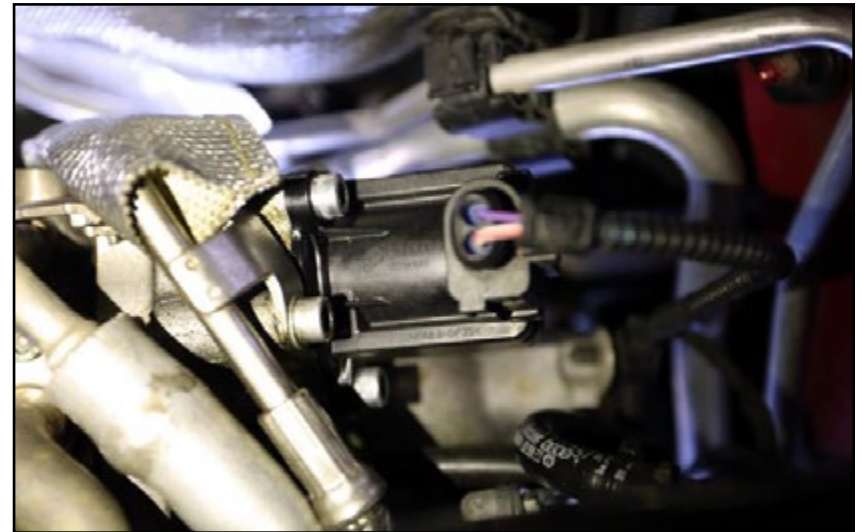


Never get underneath a vehicle that is supported only by a jack. Always make sure that the vehicle is securely supported on jack stands.

GFB DV+ INSTALLATION

Step 1:

Locate the factory diverter valve solenoid. It will either be mounted directly on the turbo compressor cover, or can be mounted remotely on some vehicles like the Golf R.



Step 2:

Unclip the wiring connector from the top of the solenoid coil by pulling on the locking tab (in the direction of the arrow) as you pull the connector to release it.

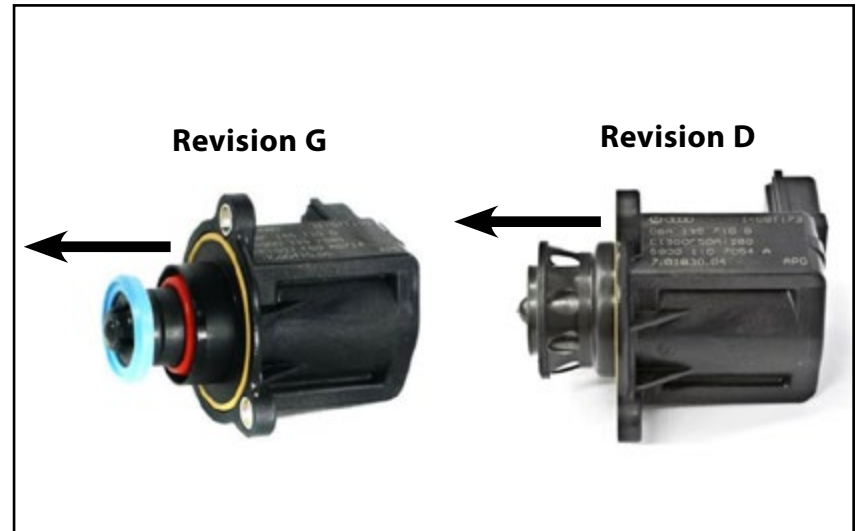
Unscrew the three mounting screws and remove the factory valve from the vehicle.



GFB DV+ INSTALLATION

Step 3:

Determine which Diverter Valve you have from the photo. Now, either pull on the diaphragm shroud (revision G), or on the plastic "basket" (revision D), and the whole assembly will pop off leaving the bare solenoid coil. Be sure to keep the yellow o-ring.



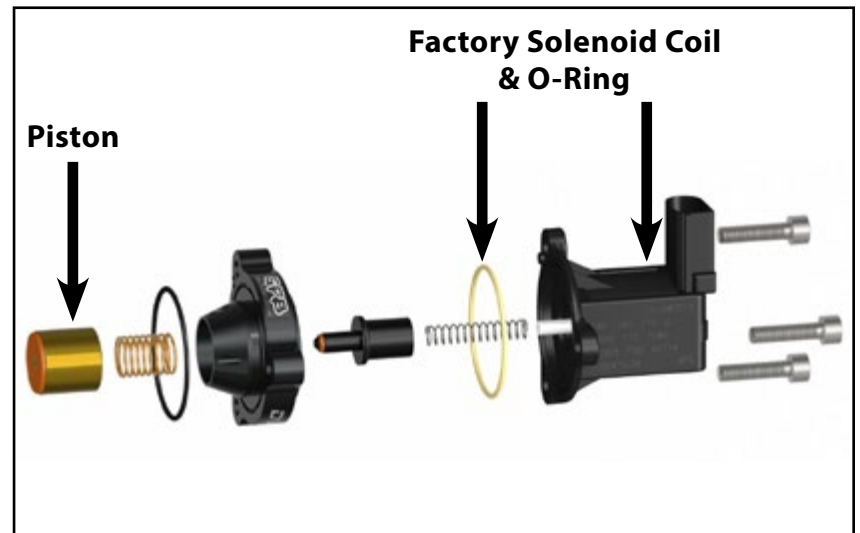
Step 4:

Install the GFB parts onto the solenoid as shown in the photo, using a little engine oil on the outside of the piston. Make sure to use the GFB supplied spring inside the solenoid coil.

Fit the valve/solenoid assembly on the vehicle in the factory location using the GFB supplied longer bolts, and reconnect the wiring loom.

NOTE

The only OE parts you will reuse are the solenoid coil and the yellow o-ring.



Your GFB 2.0T DV+ installation is complete!



These instructions are provided as a courtesy by ECS Tuning.

Proper service and repair procedures are vital to the safe, reliable operation of all motor vehicles as well as the personal safety of those performing the repairs. Standard safety procedures and precautions (including use of safety goggles and proper tools and equipment) should be followed at all times to eliminate the possibility of personal injury or improper service which could damage the vehicle or compromise its safety.

Although this material has been prepared with the intent to provide reliable information, no warranty (express or implied) is made as to its accuracy or completeness. Neither is any liability assumed for loss or damage resulting from reliance on this material. SPECIFICALLY, NO WARRANTY OF MERCHANTABILITY, FITNESS FOR A PARTICULAR PURPOSE OR ANY OTHER WARRANTY IS MADE OR TO BE IMPLIED WITH RESPECT TO THIS MATERIAL. In no event will ECS Tuning, Incorporated or its affiliates be liable for any damages, direct or indirect, consequential or compensatory, arising out of the use of this material.