



MKVI Jetta Fog Light Kit



Part Number **ES2500919**
VW Jetta Fog Light
Installation

This tutorial is provided as a courtesy by ECS Tuning.

Proper service and repair procedures are vital to the safe, reliable operation of all motor vehicles as well as the personal safety of those performing the repairs. Standard safety procedures and precautions (including use of safety goggles and proper tools and equipment) should be followed at all times to eliminate the possibility of personal injury or improper service which could damage the vehicle or compromise its safety.

Although this material has been prepared with the intent to provide reliable information, no warranty (express or implied) is made as to its accuracy or completeness. Neither is any liability assumed for loss or damage resulting from reliance on this material. SPECIFICALLY, NO WARRANTY OF MERCHANTABILITY, FITNESS FOR A PARTICULAR PURPOSE OR ANY OTHER WARRANTY IS MADE OR TO BE IMPLIED WITH RESPECT TO THIS MATERIAL. In no event will ECS Tuning, Incorporated or its affiliates be liable for any damages, direct or indirect, consequential or compensatory, arising out of the use of this material.

VW Jetta MKVI Fog Light Installation



ES2500919

ES2500919

Fog Light Kit

Volkswagen Jetta MKVI

- Fog lights (qty 2)
- Fog light vent panels (qty 2)
- ECS wiring harness with relay
- Euro headlight switch (chrome trim)



Tools We Used

Three-foot length mechanics wire (or wire clothes hanger)

- 3/8-inch ratchet
- 3/8-inch extension
- wire stripper/cutter
- T25 Torx® driver
- T27 Torx Socket
- 10mm socket
- tape
- sand paper

VW Jetta MKVI Fog Light Installation

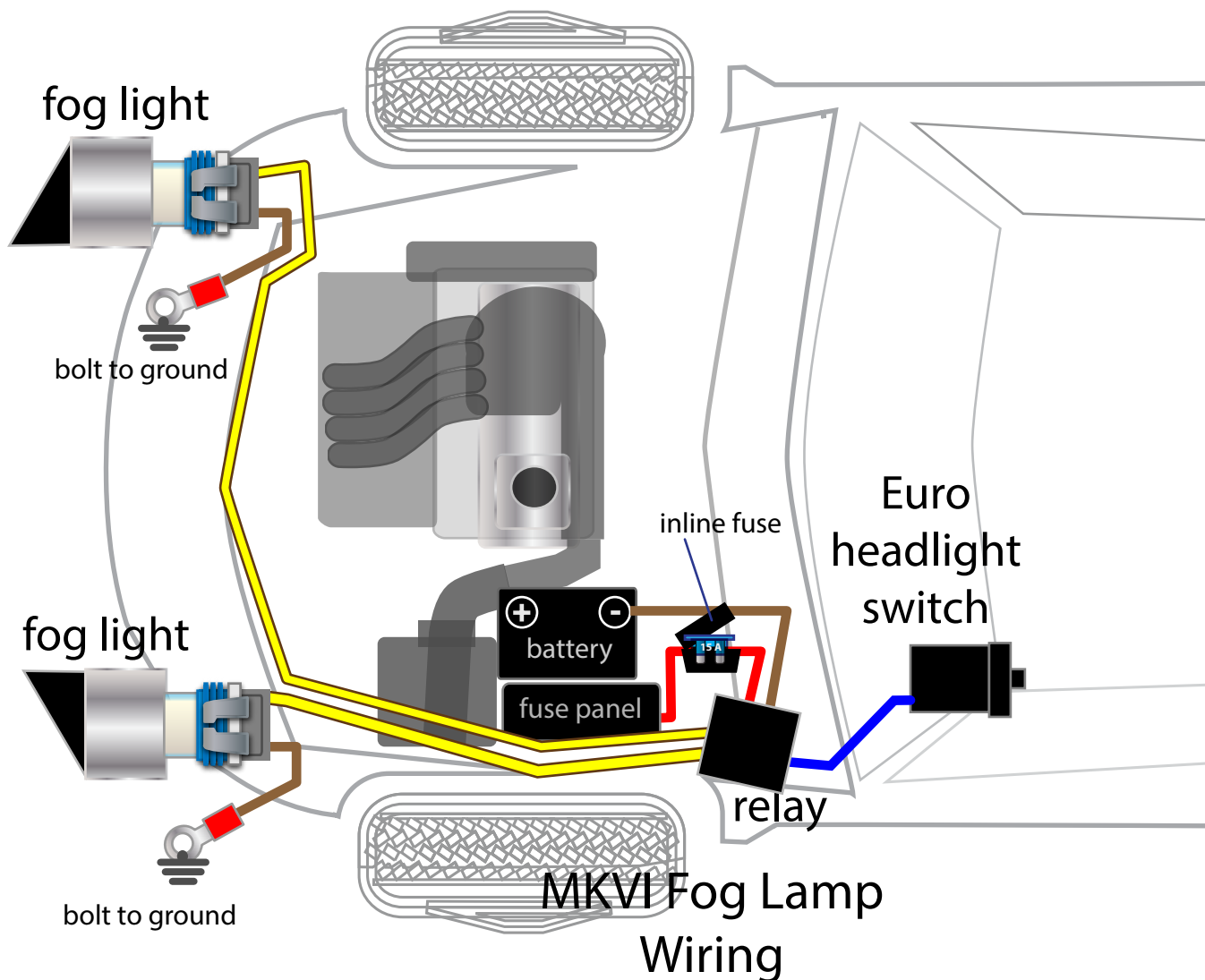


Overview

ES2500919

Component Locations and Wiring Schematic

The illustration below shows the installed locations of the fog lamp components included in your kit, and identifies general wiring routing and individual wire harness colors. The installation instructions on the following pages provide suggestions about how to route the wiring and mount individual components.



This tutorial is presented in Four Color-Coded Sections

- 1) Mount the fog light relay
- 2) Route and connect the blue wire
- 3) Connect the power and ground wires
- 4) Install the fog lights

VW Jetta MKVI Fog Light Installation



Mount the Fog Light Relay

ES2500919

Step 1

Inside the engine compartment, unscrew the round retainer clip securing the trim panel to the body. This clip is located near the battery.

Spin it counterclockwise to remove it.

(The battery cover is labeled for reference.)



Step 2

Connect the fog light wiring harness to the relay. Slide the hole in the relay mount bracket over the threaded stud; then push the circular clip over the stud, as shown.

Drape the individual wires in the relay harness off to the side, for now.



Route and Connect the Blue Wire

The thin blue wire in the relay harness must be run into the cabin and connected to pin 8 of your new Euro headlight switch. There are several ways to do this; we found it easiest to fish the blue wire through a rubber grommet in the firewall, located behind the battery.

VW Jetta MKVI Fog Light Installation



Route and Connect the Blue Wire

ES2500919

Step 1

Go inside the car.

Working beneath the dash in the area to the left of the pedals, locate the small rubber grommets in the firewall. Push a length of mechanics wire (or a length of coat hanger) through the rubber grommet into the underhood area behind the battery.

Our photo shows the location of the firewall grommet.



Step 2

Reach down behind the battery and pull the mechanics up.

Tape the blue wire from the fog light wiring harness to the mechanics wire. Twist the wires together and tape them tightly so they will slide through the firewall grommet easily.



Step 3

Back inside the car, pull the mechanics wire to draw the blue wire through the firewall grommet into the area beneath the dash.

Untape the wires. Discard the mechanics wire and let the blue wire hang for now.



VW Jetta MKVI Fog Light Installation



Route and Connect the Blue Wire

ES2500919

Step 4

Remove the old headlight switch.

With the switch in the off position, push straight in on the center knob and turn the knob clockwise until it stops; then pull the light switch straight out of the dash.



Step 5

Push on the retainer clips at the sides of the headlight connector as you slide it away from the switch.



Step 6

Find the fuse box cover located beneath the light switch on the left side of the dash. Pull out on the lower edge of the cover to pop it free from the metal retainer clips (arrows) that hold it in place.

Take the blue wire and fish it up through the fuse panel opening to the headlight switch hole.



VW Jetta MKVI Fog Light Installation



Route and Connect the Blue Wire

ES2500919

Step 7

Route the blue wire through the switch hole and push it into harness connector terminal 8, as shown. (Each cavity has an embossed number.)

Push the wire into the cavity far enough for the metal lock tabs on the wire terminal to snap in place in the plastic connector housing. (Give the blue wire a slight tug to be sure it won't pull or fall out later.)



Step 8

Plug the connector into the new Euro headlight switch in your kit.

Make sure the plastic locking tabs snap in place to secure the connector to the switch.



Step 9

Insert the new switch into the dashboard opening, indexed to its normal position. Then push straight in until the switch sits flush and you hear the lock tab click in place.

Reach up under the dash and secure any loose length of blue wire with zip ties. Do the same inside the engine compartment, securing any length of blue wire that remains.

Replace the fuse panel cover.



VW Jetta MKVI Fog Light Installation



Connect the power and ground wires

ES2500919

In this section we will route the red and brown wires from the relay harness toward the battery and large power distribution box located next to the battery. Our photos show how to connect the wires that provide power and ground to the relay.

Step 1 - Connection to voltage

Remove the plastic cover from the power distribution panel, located next to the battery.



Step 2 - Connection to voltage

Unscrew the hex nut retainer holding the large red power cable to the stud inside the power panel. Lift it off and drop the eyelet from the red power wire in the relay harness over the stud (arrow).

Reinstall the power cable and tighten the nut. Make it tight, but don't overtighten it.



Step 3 - Connect to voltage

Use a zip tie to secure the wires and replace the fuse panel cover.

Take a moment to attach any excess wire with a zip tie. Position the inline fuse holder at an accessible location and secure it.



VW Jetta MKVI Fog Light Installation



Connect the power and ground wires

ES2500919

Step 4 - Connection to ground

Remove the battery cover. Loosen and remove the nut on the battery negative cable.

Slip the eyelet of the relay harness ground wire (brown wire) over the bolt in the battery clamp. Replace the nut and hand tighten as you would normally.



Install the Fog Lights

Now that we have the headlight switch trigger wire (blue wire), power, and ground all connected, it's time to run the power feed wires to the fog lights.

Step 1 - Remove the front grille

Remove the front top grille.

Remove the four Torx® screws from the rear top edge of the grille.



Step 2 - Remove the front grille

Tip up the rear edge of the grille slightly as you pull it forward, and remove it



VW Jetta MKVI Fog Light Installation



Install the Fog Lights

ES2500919

Step 3 - Run Yellow Wires to Grille

Route the two yellow fog light power wires around the fuse distribution panel and forward toward the front of the car. Secure the wires with zip ties at several locations.

Feed the wires (with short ground wire attached) through the opening next to the left headlight, as shown.



Step 4 - Remove lower grilles

Use a non-marring plastic trim removal tool to pry at the edges of the lower, outer grilles. Work your way around the outer edge, releasing the plastic snap retainers until the grille comes out. Repeat this at the opposite side outer grille.



Step 5 - Remove lower grilles

With both outer grilles removed, repeat the process at the center grille section.

Removing the grilles opens up the entire lower section of the front bumper fascia, making it easy to run and secure the yellow fog lamp wires.



VW Jetta MKVI Fog Light Installation



Install the Fog Lights

ES2500919

Step 6 - Route fog light wires

Route the longer fog light yellow wire down and across the inner bumper cover to the right grille opening. Secure it at several points with zip ties.

Route the shorter yellow wire to the left side grille opening, securing it with zip ties

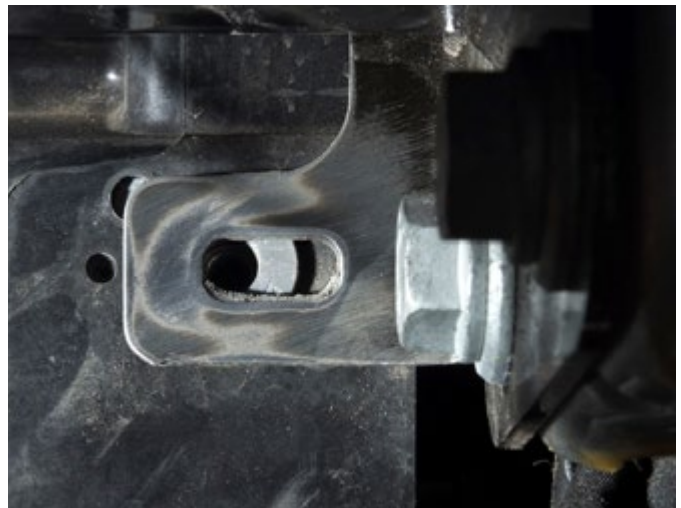
Leave the yellow wires hang in the openings for now while you connect the fog lamp ground wires, one on each side.



Step 7 - Connect ground wires

Make a bolt-to-ground connection for the brown ground wires. For convenience, we'll use the T27 Torx head bolts on either side of the radiator.

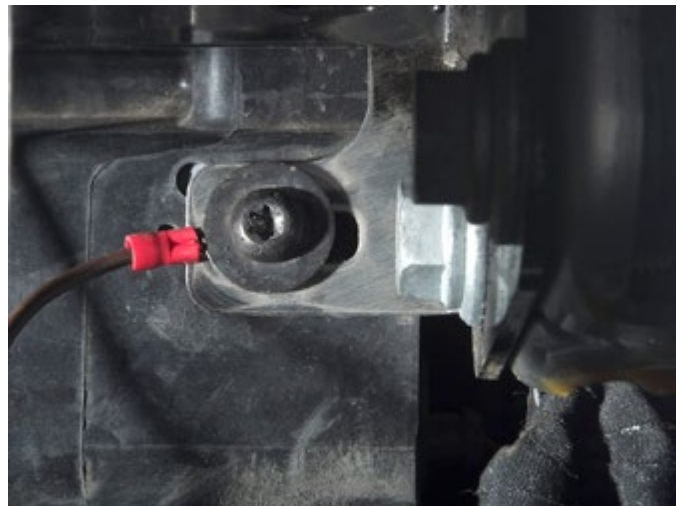
Remove the bolts; clean the bolt washers and the faces of the metal brackets on both sides with sandpaper to make a good metal-to-metal connection.



Step 8 - Connect ground wires

Insert the bolt through the brown ground wire eyelet as shown, and tighten it.

(Do this on both sides. You may wish to spray paint any exposed bare metal—**after making the connection**—to prevent rust.)



VW Jetta MKVI Fog Light Installation



Install the Fog Lights

ES2500919

Step 9 - Connect the lights

Plug the wire connectors into the fog lights. Push them in until the lock clips snap in place. This locks the connector in place and compresses the weather-tight seal to keep the electrical contacts dry.



Step 10 - Install the fog lights

Insert the fog lights onto the cavities in the front bumper.



Step 11 - Install the fog lights

Screw the lights in place.

Tidy up any loose wiring, making sure that none of the wires run from the relay to the fog lights can bind, rub, or be pinched once the car is fully reassembled.

Test the lights before reinstalling the grilles.

Note: If either fog light does not come on initially, the most common reason will be a poor ground connection (steps 7 and 8).



VW Jetta MKVI Fog Light Installation



Install the Fog Lights

ES2500919

Step 12 - Reinstall the grilles

With the lights tested and working, snap the lower center grille section in place.



Step 13 - Reinstall the grilles

Snap the new fog light grilles in place to complete the lower installation.



Step 14 - Reinstall the grilles

Reinstall the top grille; replace the screws removed earlier.

Check all installed wiring on last time to ensure that it is safely routed and secured.



VW Jetta MKVI Fog Light Installation



ES2500919

This concludes the installation of the VW MKVI Fog Light Kit

ES2500919



Thanks!

Thank you for purchasing the ECS Tuning MKVI Fog Light Installation Kit. We appreciate your business, and hope this guide has been helpful.



Make the job easier and prevent damage to plastic trim pieces with **ECS Tuning Trim and Molding Removal Tool Sets:**
[ES2500877](#) and [ES517779](#).