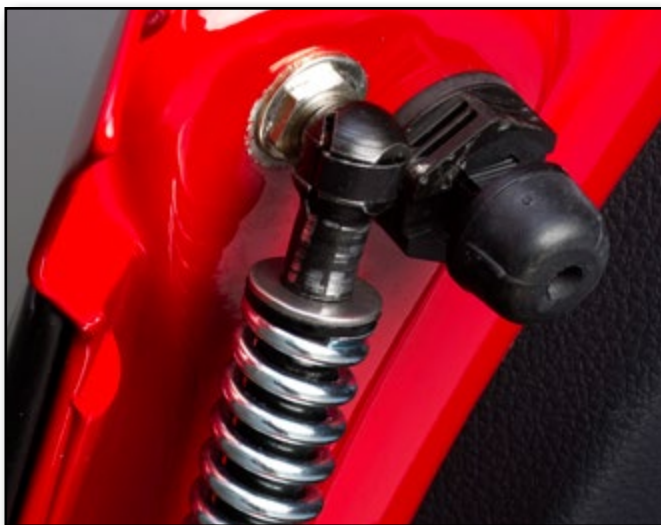




Volkswagen MK7 Golf Hatch Pop Kit Installation



Proper service and repair procedures are vital to the safe, reliable operation of all motor vehicles as well as the personal safety of those performing the repairs. Standard safety procedures and precautions (including use of safety goggles and proper tools and equipment) should be followed at all times to eliminate the possibility of personal injury or improper service which could damage the vehicle or compromise its safety.

INTRODUCTION

The Project:

Today we're going to install our ECS Hatch Pop Kit onto a Volkswagen MK7 Golf GTI. This kit will replace the original hatch struts with our ECS Tuning hatch struts, which will make your hatch pop all the way open with the push of a button. This simple accessory is very easy to install, and it will only require a few standard tools. Feel free to take your time and enjoy the project, once you have everything you need on hand it should be done in less than an hour. Some vehicles may require slightly more time for VAG-COM coding if the hatch doesn't pop with the key fob.

ECS Difficulty Gauge



1: Easy
Basic Skills Required

Before you begin, read through these instructions to get an overview of the job, then you'll be able to breeze right through it. Just to make sure you have everything you need, reference the required tool list on [Page 4](#). Thank you for looking to ECS Tuning for all of your performance and repair needs, we appreciate your business!



TABLE OF CONTENTS

Required Tools and Equipment.....	pg.4
Shop Supplies and Materials.....	pg.5
Installation and Safety Information.....	pg.6
Removing the Original Hatch Struts.....	pg.7
Installing the New Hatch Struts	pg.10
VAG-COM Coding.....	pg.13
Schwaben Tools	pg.18

Symbols:

The following symbols may be used throughout these instructions indicating special attention:



FORK IN THE ROAD: When there are different options within any given kit, we will direct you to the proper page and step to continue.



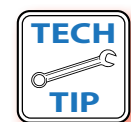
YIELD: Pause for a moment to double check component installation before you continue. Ignoring this can cost you time later during the installation.



CAUTION: Pay close attention to these warnings and instructions. Difficult installation, personal injury or component damage may occur if ignored.



STOP: The upcoming steps require specific preparation and/or assistance in the interest of safety. Please read ahead in the instructions and prepare before continuing.



TECH TIP: Tips and tricks to make the job go much easier.



NOTE: Additional information that may be useful to the installation depending on your application.

REQUIRED TOOLS

Note: The tools required for each step will be listed by the step number throughout these instructions.

Standard Automotive Tools

- 3/8" Drive Ratchet [ES#2765902](#)
- 3/8" Drive Torque Wrench..... [ES#2221245](#)
- 3/8" Drive Deep and Shallow Sockets [ES#2763772](#)
- 3/8" Drive Extensions..... [ES#2804822](#)
- Hydraulic Floor Jack [ES#240941](#)
- Torx Drivers and Sockets [ES#11417/8](#)
- 1/2" Drive Deep and Shallow Sockets [ES#2839106](#)
- 1/2" Drive Ratchet
- 1/2" Drive Extensions
- 1/2" Drive Torque Wrench [ES#2221244](#)
- 1/2" Drive Breaker Bar [ES#2776653](#)
- Protecta-Sockets (for lug nuts)..... [ES#2221243](#)
- Crows Foot Wrenches
- Bench Mounted Vise
- Hook and Pick Tool Set..... [ES#2778980](#)

Required Tools For This Install

Tools Available On Our Website

- 1/4" Drive Ratchet [ES#2823235](#)
- 1/4" Drive Deep and Shallow Sockets..... [ES#2823235](#)
- 1/4" Drive Extensions [ES#2823235](#)
- Plier and Cutter Set..... [ES#2804496](#)
- **Flat and Phillips Screwdrivers**..... [ES#2225921](#)
- Jack Stands..... [ES#2763355](#)
- Small Hammer
- Pry Bar Set..... [ES#1899378](#)
- Electric/Cordless Drill
- Wire Strippers
- Drill Bits
- Punch and Chisel Set
- **Telescoping Hood Prop**..... [ES#2748795](#)
- Hex Bit (Allen) Wrenches and Sockets [ES#11420](#)
- **Open/Boxed End Wrench Set** [ES#2765907](#)

Specialty Tools

- **VAG-COM Scanner** (required if your hatch does not release after pressing the button on the key fob)

SHOP SUPPLIES AND MATERIALS

Standard Shop Supply Recommendations: We recommend that you have a standard inventory of automotive shop supplies before beginning this or any automotive repair procedure. The following list outlines the basic shop supplies that we like to keep on hand. Shop supplies with a hyperlink are available on our website.

- Hand Cleaner/Degreaser - [Click Here](#)
- Pig Mats - for protecting your garage floor and work area from spills and stains - [Click Here](#)
- Spray detailer - for rapid cleaning of anything that comes into contact with your paint such as brake fluid - [Click Here](#)
- Micro Fiber Towels - for cleaning the paint on your car - [Click Here](#)
- Latex Gloves - for the extra oily and dirty jobs - [Click Here](#)
- Medium and High Strength Loctite Thread lock compound - to prevent bolts from backing out - [Click Here](#)
- Anti-Seize Compound - to prevent seizing, galling, and corrosion of fasteners - [Click Here](#)
- Aerosol Brake/Parts Cleaner - for cleaning and degreasing parts
- Shop Rags - used for wiping hands, tools, and parts
- Penetrating oil - for helping to free rusted or stuck bolts and nuts
- Mechanics wire - for securing components out of the way
- Silicone spray lube - for rubber components such as exhaust hangers
- Paint Marker - for marking installation positions or bolts during a torquing sequence
- Plastic Wire Ties/Zip Ties - for routing and securing wiring harnesses or vacuum hoses
- Electrical tape - for wrapping wiring harnesses or temporary securing of small components

INSTALLATION NOTES

- **RH** refers to the *passenger side* of the vehicle.
- **LH** refers to the *driver side* of the vehicle.
- Always use the proper torque specifications.
- If applicable to this installation, torque specifications will be listed throughout the document and at the end as well.
- Please read all of these instructions and familiarize yourself with the complete process **BEFORE** you begin.

GENERAL PREPARATION AND SAFETY INFORMATION

ECS Tuning cares about your health and safety. Please read the following safety information. This information pertains to automotive service in general, and while it may not pertain to every job you do, please remember and share these important safety tips.

- Park your car in a safe, well lit, level area.
- Shut the engine off and remove the key from the ignition switch.
- Make sure any remote start devices are properly disabled.
- **ALWAYS** wear safety glasses.
- Make sure the parking brake is applied until the vehicle is safely lifted and supported.
- If using an automotive lift, be sure and utilize the factory specified lift points. Lifting a vehicle in an incorrect location can cause damage to the suspension/running gear.
- When lifting a vehicle using a jack, always utilize the factory specified lift points. Lifting a vehicle in an incorrect location can cause damage to the suspension/running gear. **ALWAYS** support the vehicle with jack stands.
- Always read and follow all safety information and warnings for the equipment you are using.



Never get underneath a vehicle that is supported only by a jack. Always make sure that the vehicle is securely supported on jack stands.

REMOVING THE ORIGINAL HATCH STRUTS

Step 1:

Open the rear hatch and remove the Hatch Pop Kit from its original packaging. Now is a great time to lay out all of the tools you'll need so they're within arms reach.



Step 2:

Schwaben Telescoping Hood Prop

Support the rear hatch in order to prevent it from dropping down during this installation. You can support the hatch with our Schwaben Telescoping Hood Prop as shown in the photo, or you can enlist the help of a friend.



The hatch will not stay open with only one strut, it must be supported at all times during this installation.



REMOVING THE ORIGINAL HATCH STRUTS

Step 3: Flat Blade Screwdriver

The spring retaining clips on the hatch struts need to be released in order to remove the struts, these clips sit inside a shallow "channel" which holds them in place. Beginning with the clip at the top of the driver's side hatch strut, simply pry the clip **SLIGHTLY** upwards out of the channel (LH photo), then slide the clip parallel to the strut (RH photo) part way. **DO NOT** attempt to remove the clip by just prying it out of the strut, it cannot be removed that way.



Step 4: Flat Blade Screwdriver

Now, release the spring retaining clip at the bottom of the driver's side hatch strut just as we did on the top.



REMOVING THE ORIGINAL HATCH STRUTS

Step 5:

Pull both ends of the driver's side hatch strut off of the original ball studs.



Step 6:

13mm Wrench

Remove the original ball stud from the hatch and set it aside, we will not be reinstalling this part.



These ball studs can be **EXTREMELY** difficult to remove. Be sure to have your wrench **SQUARELY** on the stud before attempting to loosen it.



INSTALLING THE NEW HATCH STRUTS

Step 1: 13mm Wrench

Install the new ball stud and washer into the hatch, then tighten it only until it is snug.



Step 2:

Install the new driver's side hatch strut onto the vehicle so that the strut body is on the bottom, and the spring assembly is on the top. Begin by pushing the bottom end of the strut onto the lower ball stud until it "clicks" into place.



It is not necessary to remove the retaining clips in order to install the new hatch struts.



INSTALLING THE NEW HATCH STRUTS

Step 3:

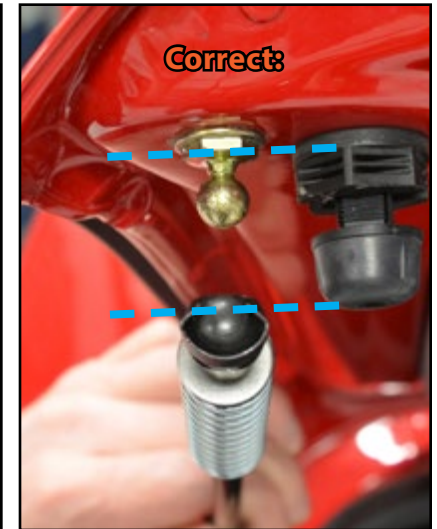
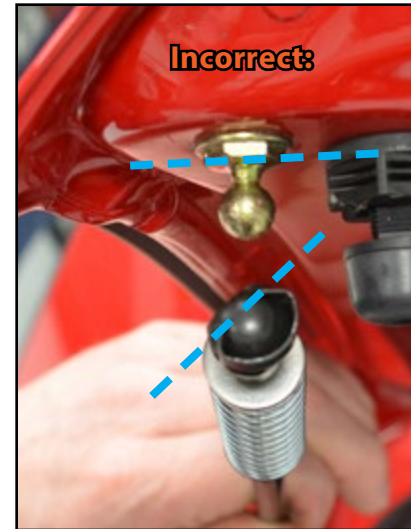
Push the top side of the hatch strut onto the upper ball stud until it “clicks” into place. This is another opportunity to ensure that the strut is correctly aligned with the two ball studs. Pay close attention to the two photos, then choose the appropriate step below.



If your hatch strut looks like the **“INCORRECT”** photo, please proceed to Step 4 below.

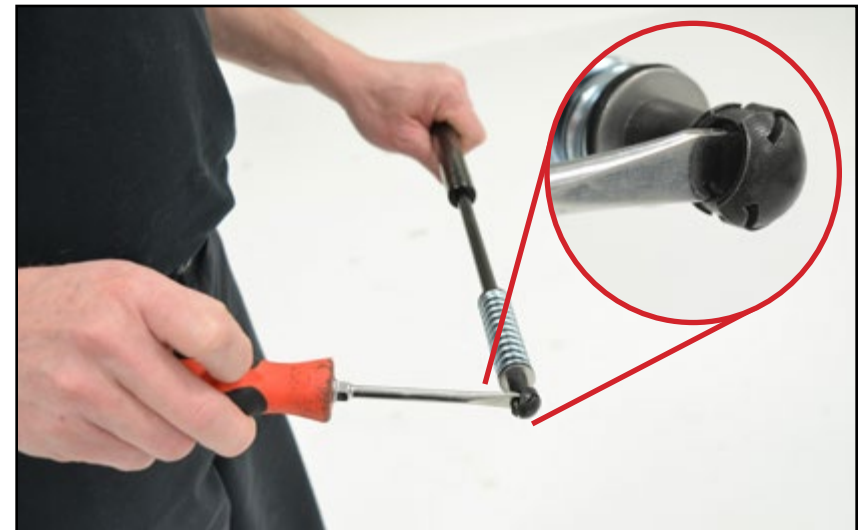


If your hatch strut looks like the **“CORRECT”** photo, please proceed to Step 5 on [Page 12](#).



Step 4: Flat Blade Screwdriver

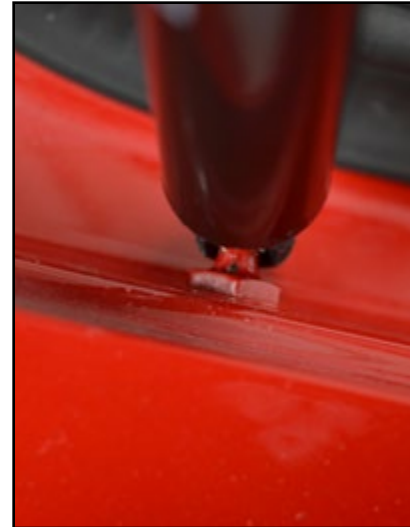
If the joint is misaligned on your hatch strut, it can be easily corrected with a Flat Blade Screwdriver. Simply grasp the strut body with one hand, then insert the screwdriver into the joint, and rotate until it is oriented like the **“CORRECT”** photo in step 3 above.



INSTALLING THE NEW HATCH STRUTS

Step 5:

Double check both joints on the hatch strut, ensuring that both of them are installed straight onto the ball studs (LH and RH photos). If you discover that one of the joints is twisted, simply remove the strut and repeat the process illustrated in Step 4 on [Page 11](#).



Step 6:

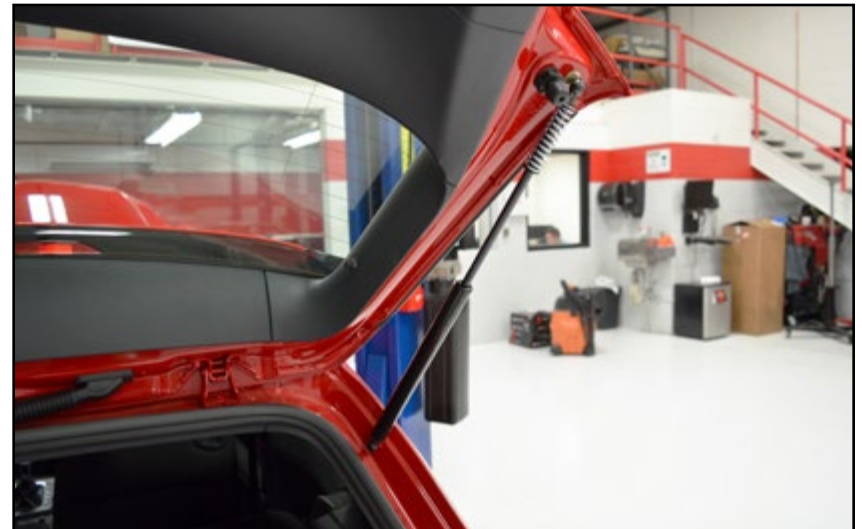
Remove the original passenger's side hatch strut and install the new strut in the same manner as the driver's side. Remove the hatch support tool you used to hold the hatch up while you were working, then close the hatch. Stand behind the vehicle and press the hatch release button on your key fob:



If your hatch **DOES NOT** pop, please proceed to the next page for VAG-COM programming instructions.



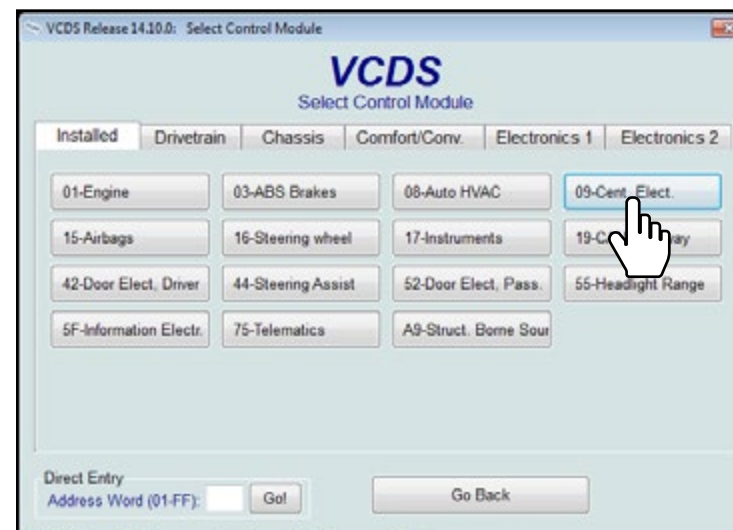
If your hatch **DOES** pop, your installation is now complete!



VAG-COM CODING

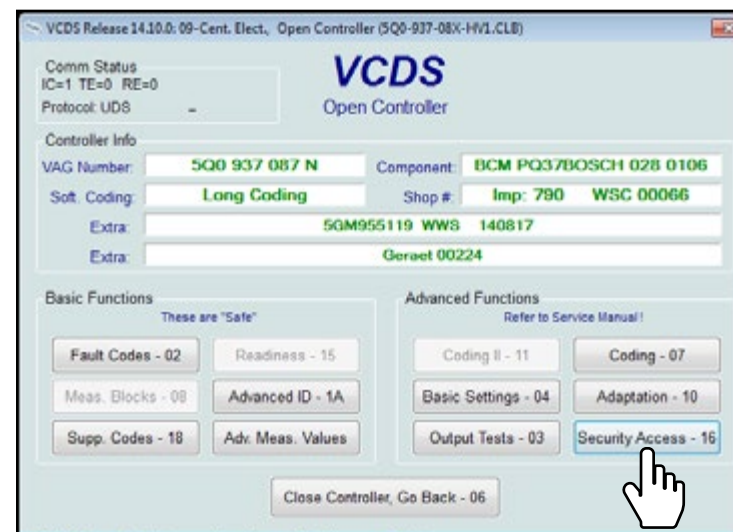
Step 1:

If the hatch on your VW MK7 does not open with the button on your key fob, it requires VCDS coding in order to actuate the hatch release. Connect a VCDS interface to the vehicle, then click on the "09-Cent. Elect." button in the top right corner in order to access the Central Electrical Control Module.



Step 2:

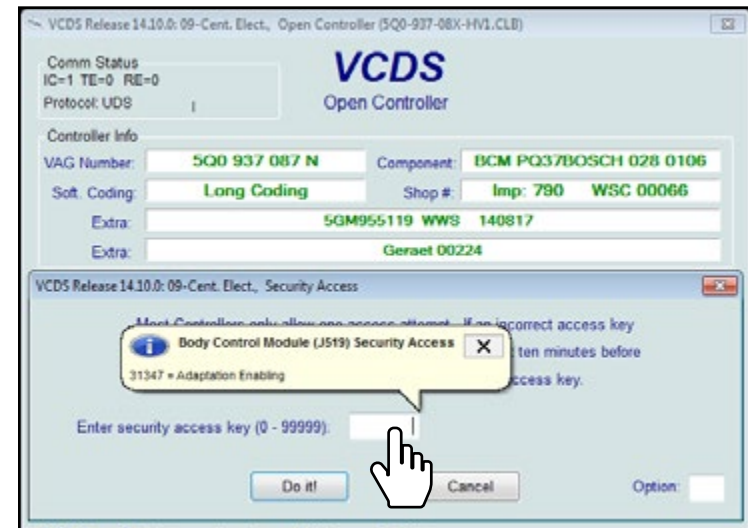
Click on the "Security Access" button in the lower right corner.



VAG-COM CODING

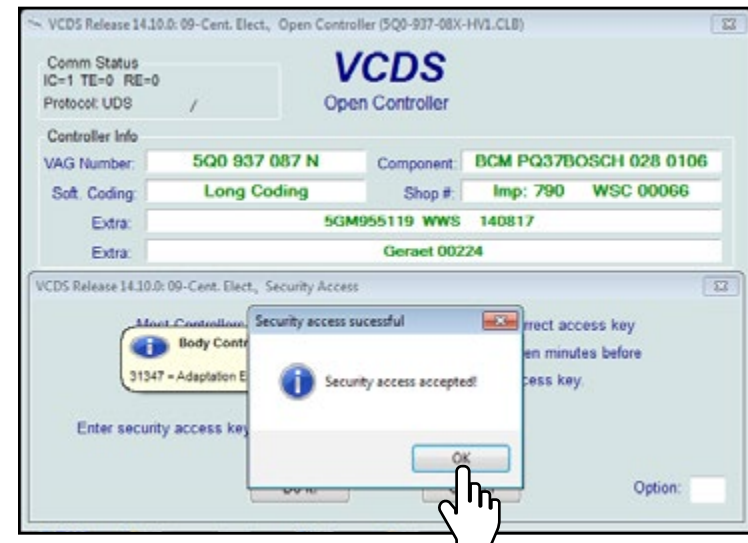
Step 3:

Click on the text field as shown in the photo, this will cause a message to pop up showing the security access code. In our case the code was 31347, but your code may differ.



Step 4:

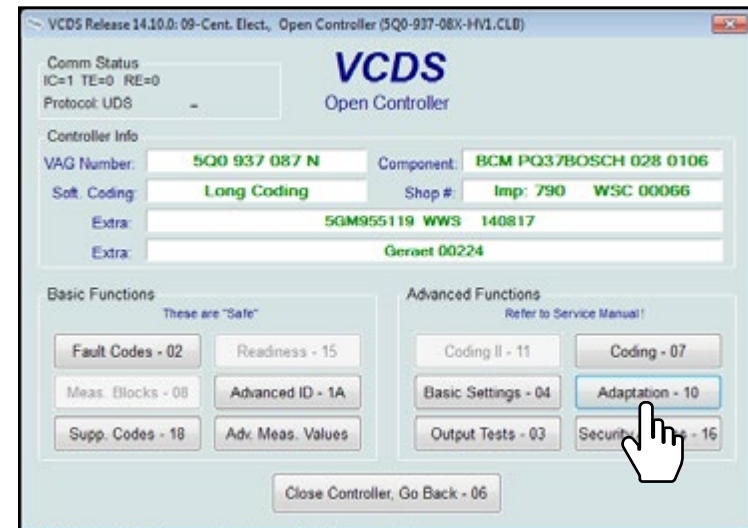
Enter the security access code into the text field and click the "Do It!" button, you should see another pop up message stating that your security access is accepted, then click the "OK" button.



VAG-COM CODING

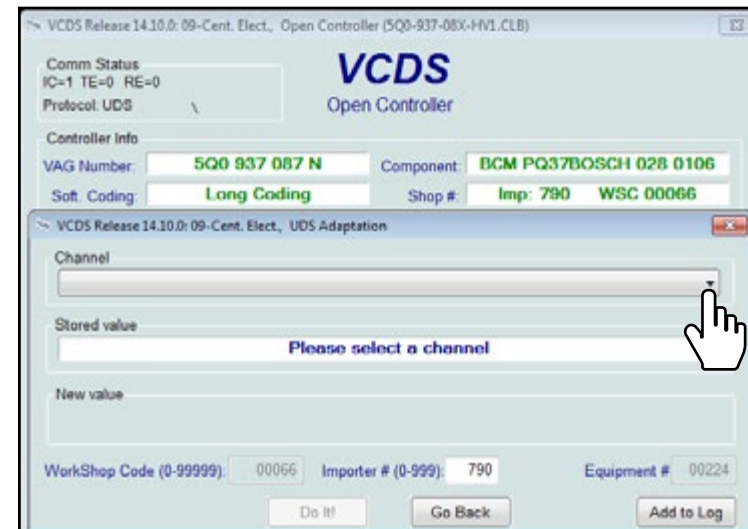
Step 5:

Click on the "Adaptation" button on the right side of the screen, it may take several seconds for the Adaptation window to pop up.



Step 6:

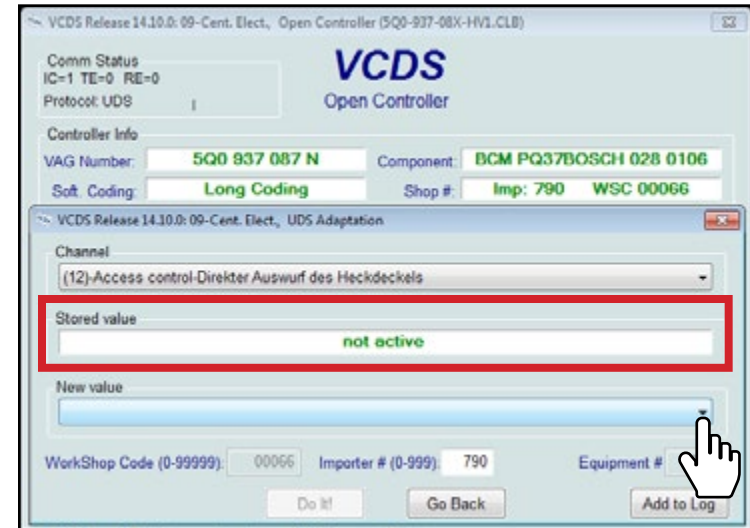
Click on the "Channel" selector drop-down menu at the top of the window, then select "(12)-Access control-Direkter Auswurf des Heckdeckels".



VAG-COM CODING

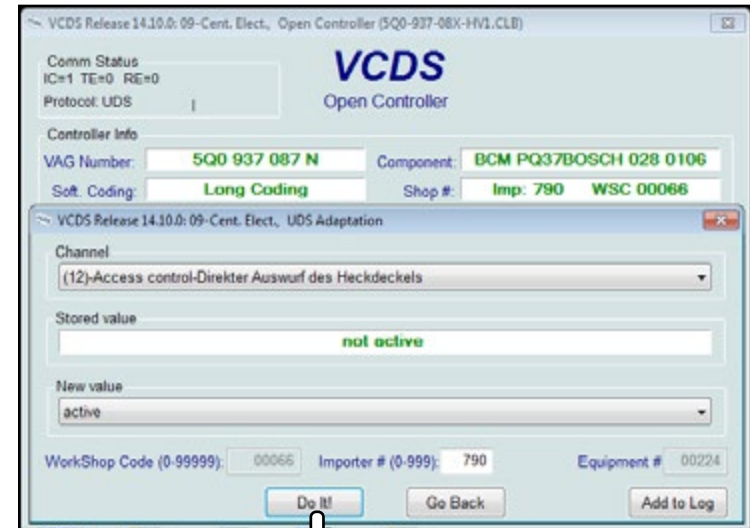
Step 7:

The "Stored Value" (highlighted in **RED** in the photo) should read "not active". Now, click on the "New Value" selector drop-down menu at the bottom of the window, and select "Active".



Step 8:

Click on the "Do It!" button at the bottom of the window.



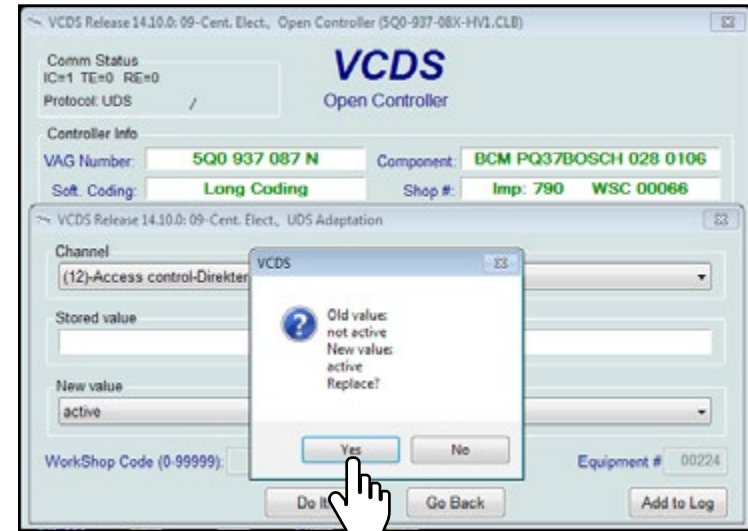
VAG-COM CODING

Step 9:

A window will pop up to confirm the changes you are making, it should state that you are changing the value:

FROM: "not active"
TO: "active"

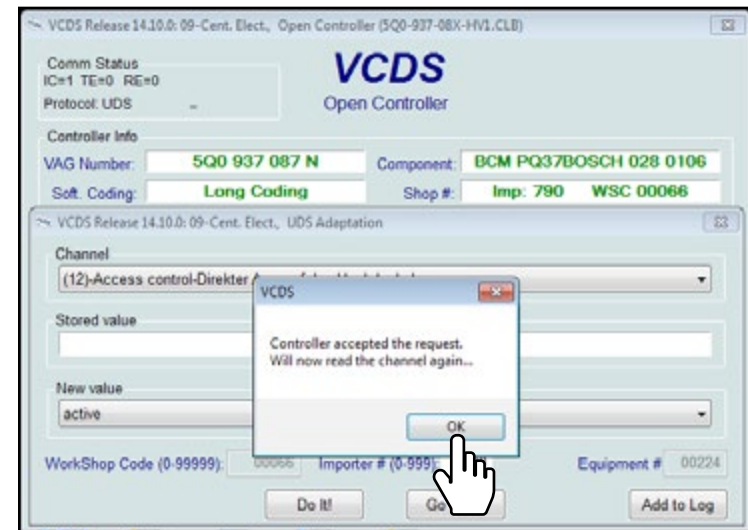
Click on the "Yes" button to confirm the changes.



Step 10:

The window should change to a confirmation window showing the change has been accepted, click the "OK" button.

VCDS Programming is now complete!



SCHWABEN - BUILD THE ULTIMATE TOOL COLLECTION

At ECS Tuning, we carry a line of high quality Schwaben Tools and Equipment to help you build your ultimate tool collection. Never before has affordability and quality been so closely related. Our entire Schwaben line is subjected to strict in house testing for strength and durability. See what we have to offer and equip your garage without breaking the bank.



Your MK7 Golf Hatch Pop Kit installation is complete!



These instructions are provided as a courtesy by ECS Tuning

Proper service and repair procedures are vital to the safe, reliable operation of all motor vehicles as well as the personal safety of those performing the repairs. Standard safety procedures and precautions (including use of safety goggles and proper tools and equipment) should be followed at all times to eliminate the possibility of personal injury or improper service which could damage the vehicle or compromise its safety.

Although this material has been prepared with the intent to provide reliable information, no warranty (express or implied) is made as to its accuracy or completeness. Neither is any liability assumed for loss or damage resulting from reliance on this material. SPECIFICALLY, NO WARRANTY OF MERCHANTABILITY, FITNESS FOR A PARTICULAR PURPOSE OR ANY OTHER WARRANTY IS MADE OR TO BE IMPLIED WITH RESPECT TO THIS MATERIAL. In no event will ECS Tuning, Incorporated or its affiliates be liable for any damages, direct or indirect, consequential or compensatory, arising out of the use of this material.