



BMW E9x M3 Carbon Fiber Intake System Installation Instructions



Proper service and repair procedures are vital to the safe, reliable operation of all motor vehicles as well as the personal safety of those performing the repairs. Standard safety procedures and precautions (including use of safety goggles and proper tools and equipment) should be followed at all times to eliminate the possibility of personal injury or improper service which could damage the vehicle or compromise its safety.



TABLE OF CONTENTS

Installation and Safety Information	pg.3
Removing the Stock Intake System	pg.4
Installing the New Intake System	pg.6
Carbon Fiber Cleaning and Care	pg.11

INSTALLATION NOTES

- **RH** refers to the *passenger side* of the vehicle.
- **LH** refers to the *driver side* of the vehicle.
- Always use the proper torque specifications.
- If applicable to this installation, torque specifications will be listed throughout the document and at the end as well.
- Please read all of these instructions and familiarize yourself with the complete process **BEFORE** you begin.

GENERAL PREPARATION AND SAFETY INFORMATION

Turner Motorsport cares about your health and safety, please read the following safety information. This information pertains to automotive service in general, and while it may not pertain to every job you do, please remember and share these important safety tips.

- Park your car in a safe, well lit, level area.
- Shut the engine off and remove the key from the ignition switch.
- Make sure any remote start devices are properly disabled.
- **ALWAYS** wear safety glasses.
- Make sure the parking brake is applied until the vehicle is safely lifted and supported.
- Whether lifting a vehicle using an automotive lift or a hydraulic jack, be sure and utilize the factory specified lift points.
- Lifting a vehicle in an incorrect location can cause damage to the suspension/running gear.
- **ALWAYS** support the vehicle with jack stands.
- **ALWAYS** read and follow all safety information and warnings for the equipment you are using.



NEVER get underneath a vehicle that is supported only by a jack, and **ALWAYS** make sure that the vehicle is securely supported on jack stands.

REMOVING THE STOCK INTAKE SYSTEM

Step 1: T20 Torx

Remove the screws (arrows) and remove the intake air duct (highlighted in **RED**).



Step 2: 10mm Socket, 6mm Socket and Ratchet

Remove the bolts (circled in **RED**), loosen the clamp (arrow), then disconnect the crankcase vent hose (highlighted in **RED**) and move it aside.



REMOVING THE STOCK INTAKE SYSTEM

Step 3:

Remove the factory air box and intake tube by pulling upward on the airbox and sliding the intake tube outward from the plenum.



Step 4:

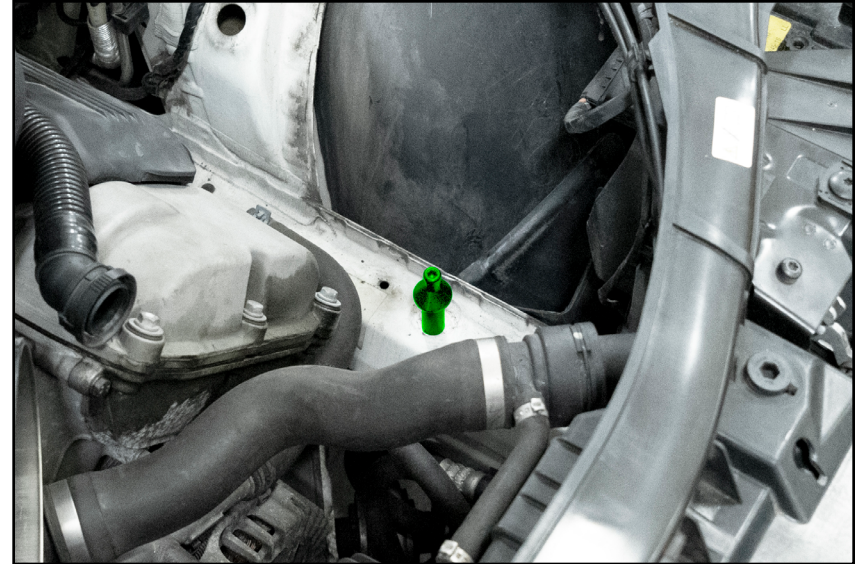
Remove the OE grommet (circled in **RED**).



INSTALLING THE NEW INTAKE SYSTEM

Step 1:

Install the provided standoff (highlighted in **GREEN**) onto the threaded rod on the frame rail.



Step 2:

Install the new grommet (arrow) into the hole in the strut tower.



INSTALLING THE NEW INTAKE SYSTEM

Step 3: 5mm Hex (Allen)

Install the provided ballstud (circled in **YELLOW**) into the threaded hole on the heat shield, then pop the grommet (highlighted in **GREEN**) into the hole on the underside of the heat shield. Install the mounting bracket (inset photo) using a provided M6 screw and washer (arrow in inset photo). Leave the screw loose, we will come back and tighten it at a later time.



CAUTION: Do not over tighten any of the hardware in this kit. Overtightening can cause damage to the carbon fiber.



INSTALLING THE NEW INTAKE SYSTEM

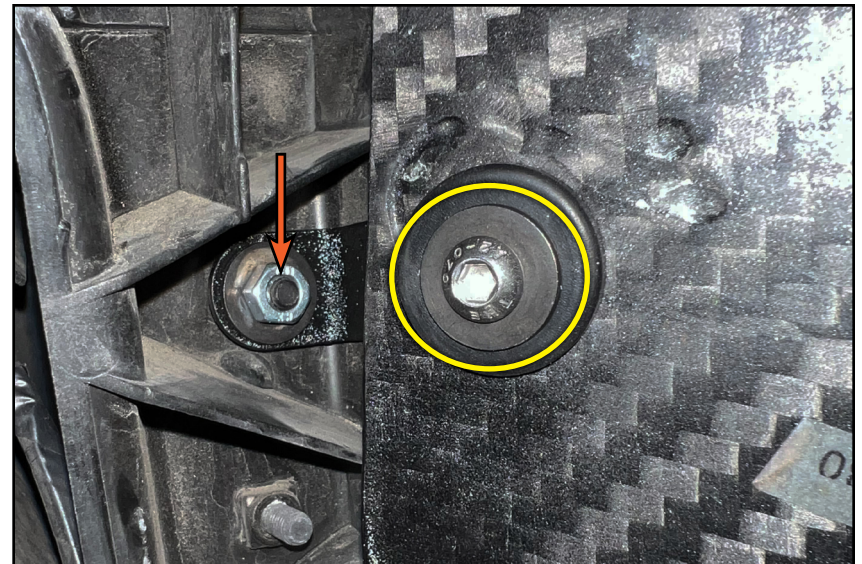
Step 4: 5mm Hex (Allen)

Install the heat shield by aligning the grommets with the standoffs and pushing down to pop them into place. Install a provided M6 screw and washer (circled in **YELLOW**), to secure the upper mounting tab to the threaded hole in the strut tower.



Step 5: 5mm Hex (Allen), 10mm Socket & Ratchet

Slide the lower bracket over the threaded stud on the back of the core support, then install the provided M6 nut and washer (arrow) and tighten until snug. Go back and tighten the screw (circled in **YELLOW**) which secures the bracket to the grommet.



INSTALLING THE NEW INTAKE SYSTEM

Step 6: 6mm Socket & Ratchet

Slide the silicone coupler and clamps onto the plenum, then tighten the clamp (arrow) until snug.



Step 7: 5mm Hex (Allen), 6mm Socket, & Ratchet

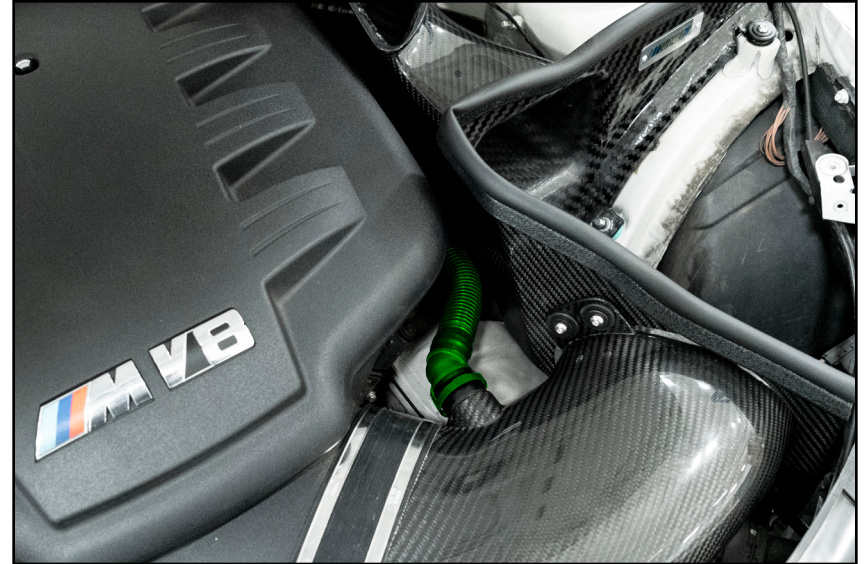
Slide the intake tube into the silicone coupler, then slide the intake tube through the opening in the heat shield. Install the remaining M6 screws and washers (inset photo) and tighten them until snug. Tighten the clamp (arrow) until snug.



INSTALLING THE NEW INTAKE SYSTEM

Step 8:

Push the crankcase vent hose (highlighted in **GREEN**) onto the flange on the intake tube until it snaps into place.



Step 9: 8mm Socket & Ratchet

Install the air filter onto the intake tube and tighten the clamp (arrow) until snug.

Congratulations! Your installation is complete!



CARBON FIBER CLEANING AND CARE

Turner Motorsport Carbon Fiber Intakes are clear coated for excellent finish durability and UV resistance right out of the box.

Carbon fiber can be washed with any gentle cleanser or soap. If it is safe for the paint on your car, it will be safe for the carbon fiber.

Be extra careful not to nick or deeply scratch the clear coat on the carbon fiber. This can lead to water intrusion into the carbon fiber which will damage the finish and the integrity of the intake.

If the clear coat does get nicked or deeply scratched to expose the carbon fiber, seal the damaged area thoroughly with a clear coat touch up or clear nail polish.

To retain UV resistance and protect the finish, we recommend regular waxing with a high quality caranuba wax.

Small surface scratches and light oxidation can be buffed out using the same methods and cautions you would use on the vehicle paint.



Your Intake System installation is complete!



These instructions are provided as a courtesy by Turner Motorsport

Proper service and repair procedures are vital to the safe, reliable operation of all motor vehicles as well as the personal safety of those performing the repairs. Standard safety procedures and precautions (including use of safety goggles and proper tools and equipment) should be followed at all times to eliminate the possibility of personal injury or improper service which could damage the vehicle or compromise its safety.

Although this material has been prepared with the intent to provide reliable information, no warranty (express or implied) is made as to its accuracy or completeness. Neither is any liability assumed for loss or damage resulting from reliance on this material. SPECIFICALLY, NO WARRANTY OF MERCHANTABILITY, FITNESS FOR A PARTICULAR PURPOSE OR ANY OTHER WARRANTY IS MADE OR TO BE IMPLIED WITH RESPECT TO THIS MATERIAL. In no event will Turner Motorsport, Incorporated or its affiliates be liable for any damages, direct or indirect, consequential or compensatory, arising out of the use of this material.