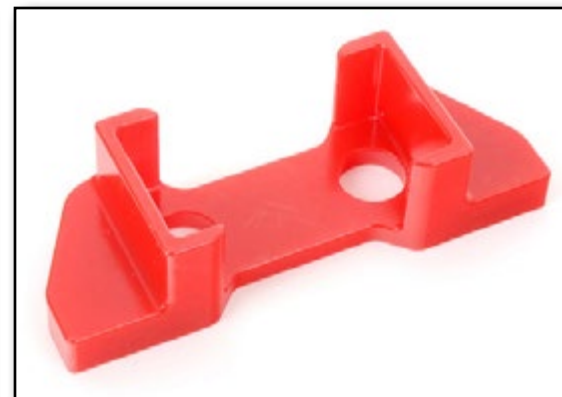




Audi B8 Transmission Mount Insert Kit Installation Instructions



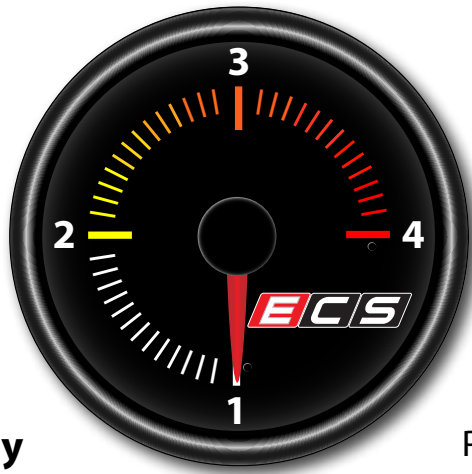
Proper service and repair procedures are vital to the safe, reliable operation of all motor vehicles as well as the personal safety of those performing the repairs. Standard safety procedures and precautions (including use of safety goggles and proper tools and equipment) should be followed at all times to eliminate the possibility of personal injury or improper service which could damage the vehicle or compromise its safety.

INTRODUCTION

The Project:

Today we are going to install our ECS Tuning Transmission Mount Insert Kit into our Audi B8 A4, but keep in mind the installation process is the same for the A7/RS7, C7 A6/S6/S7, and the B8 A4/S4/A5/S5/RS5. The stock transmission mount on your vehicle was designed with rather large voids in the rubber damper, and while this provides superior ride comfort to you in the cabin, it also allows an excessive amount of transmission movement under a load such as acceleration or deceleration. The ECS Tuning Transmission Mount Insert Kit has been designed to fill the voids in the stock transmission mount without adding harsh vibrations or noise into the cabin.

ECS Difficulty Gauge

**1 - Easy**

Pro - 4

2 - Moderate

Advanced - 3

Installing this Transmission Mount Insert Kit on your vehicle will limit unwanted transmission movement, resulting in crisper shifts and a smoother driving experience. This kit is extremely easy to install, only requiring a few basic tools. Read these instructions completely first, and with the project overview under your belt you'll breeze right through this install. Just to make sure you have everything you need, reference the required tool list on [Page 5](#) before you begin. Thank you for looking to ECS Tuning for all your performance and repair needs, we appreciate your business!

TABLE OF CONTENTS

Kit Contents.....	pg.4
Required Tools and Equipment.....	pg.5
Shop Supplies and Materials.....	pg.6
Installation and Safety Information.....	pg.7
Installing the Transmission Mount Insert Kit.....	pg.8
Schwaben Tools	pg.12

Symbols:

The following symbols may be used throughout these instructions indicating special attention:



FORK IN THE ROAD: When there are different options within any given kit, we will direct you to the proper page and step to continue.



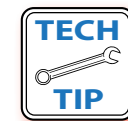
YIELD: Pause for a moment to double check component installation before you continue. Ignoring this can cost you time later during the installation.



CAUTION: Pay close attention to these warnings and instructions. Difficult installation, personal injury or component damage may occur if ignored.



STOP: The upcoming steps require specific preparation and/or assistance in the interest of safety. Please read ahead in the instructions and prepare before continuing.



TECH TIP: Tips and tricks to make the job go much easier.



NOTE: Additional information that may be useful to the installation depending on your application.

KIT CONTENTS



Transmission Mount Plate - **QTY 1**



Polyurethane Transmission Mount Insert - **QTY 1**



Polyurethane Bushing Grease - **QTY 1**



Transmission Mount Bolt - **QTY 2**

REQUIRED TOOLS

Note: The tools required for each step will be listed by the step number throughout these instructions.

Standard Automotive Tools

Required For This Install

Available On Our Website

- Protecta-Sockets (for lug nuts)..... [ES#2221243](#)
- 3/8" Drive Ratchet..... [ES#2765902](#)
- 3/8" Drive Torque Wrench..... [ES#2221245](#)
- 3/8" Drive Deep and Shallow Sockets [ES#2763772](#)
- 3/8" Drive Extensions..... [ES#2804822](#)
- Torx Drivers and Sockets [ES#11417/8](#)
- **1/2" Drive Breaker Bar** [ES#2776653](#)
- **1/2" Drive Ratchet**
- **1/2" Drive Torque Wrench** [ES#2221244](#)
- 1/2" Drive Deep and Shallow Sockets [ES#2839106](#)
- 1/2" Drive Extensions
- **Triple Square Socket Set** [ES#1910125](#)
- Crows Foot Wrenches
- Hook and Pick Tool Set..... [ES#2778980](#)
- Hex Bit (Allen) Wrenches and Sockets [ES#11420](#)

- 1/4" Drive Ratchet..... [ES#2823235](#)
- 1/4" Drive Deep and Shallow Sockets..... [ES#2823235](#)
- 1/4" Drive Extensions [ES#2823235](#)
- Plier and Cutter Set..... [ES#2804496](#)
- Flat and Phillips Screwdrivers..... [ES#2225921](#)
- **Hydraulic Floor Jack** [ES#240941](#)
- **Jack Stands**..... [ES#2763355](#)
- 32oz Ball Pein Hammer
- Pry Bar Set..... [ES#1899378](#)
- Large Channel Locks
- 1/2" Drive Pneumatic Impact
- Drill Bits
- Punch and Chisel Set
- Thread Repair Tools [ES#1306824](#)
- Open/Boxed End Wrench Set [ES#2765907](#)

SHOP SUPPLIES AND MATERIALS

Standard Shop Supply Recommendations: We recommend that you have a standard inventory of automotive shop supplies before beginning this or any automotive repair procedure. The following list outlines the basic shop supplies that we like to keep on hand. Shop supplies with a hyperlink are available on our website.

- Hand Cleaner/Degreaser - [Click Here](#)
- Pig Mats - for protecting your garage floor and work area from spills and stains - [Click Here](#)
- Spray detailer - for rapid cleaning of anything that comes into contact with your paint such as brake fluid - [Click Here](#)
- Micro Fiber Towels - for cleaning the paint on your car - [Click Here](#)
- Latex Gloves - for the extra oily and dirty jobs - [Click Here](#)
- Medium and High Strength Loctite Thread lock compound - to prevent bolts from backing out - [Click Here](#)
- Anti-Seize Compound - to prevent seizing, galling, and corrosion of fasteners - [Click Here](#)
- Aerosol Brake/Parts Cleaner - for cleaning and degreasing parts
- Shop Rags - used for wiping hands, tools, and parts
- Penetrating oil - for helping to free rusted or stuck bolts and nuts
- Mechanics wire - for securing components out of the way
- Silicone spray lube - for rubber components such as exhaust hangers
- Paint Marker - for marking installation positions or bolts during a torquing sequence
- Plastic Wire Ties/Zip Ties - for routing and securing wiring harnesses or vacuum hoses
- Electrical tape - for wrapping wiring harnesses or temporary securing of small components

INSTALLATION NOTES

- **RH** refers to the *passenger side* of the vehicle.
- **LH** refers to the *driver side* of the vehicle.
- Always use the proper torque specifications.
- If applicable to this installation, torque specifications will be listed throughout the document and at the end as well.
- Please read all of these instructions and familiarize yourself with the complete process **BEFORE** you begin.

GENERAL PREPARATION AND SAFETY INFORMATION

ECS Tuning cares about your health and safety. Please read the following safety information. This information pertains to automotive service in general, and while it may not pertain to every job you do, please remember and share these important safety tips.

- Park your car in a safe, well lit, level area.
- Shut the engine off and remove the key from the ignition switch.
- Make sure any remote start devices are properly disabled.
- **ALWAYS** wear safety glasses.
- Make sure the parking brake is applied until the vehicle is safely lifted and supported.
- If using an automotive lift, be sure and utilize the factory specified lift points. Lifting a vehicle in an incorrect location can cause damage to the suspension/running gear.
- When lifting a vehicle using a jack, always utilize the factory specified lift points. Lifting a vehicle in an incorrect location can cause damage to the suspension/running gear. **ALWAYS** support the vehicle with jack stands.
- Always read and follow all safety information and warnings for the equipment you are using.

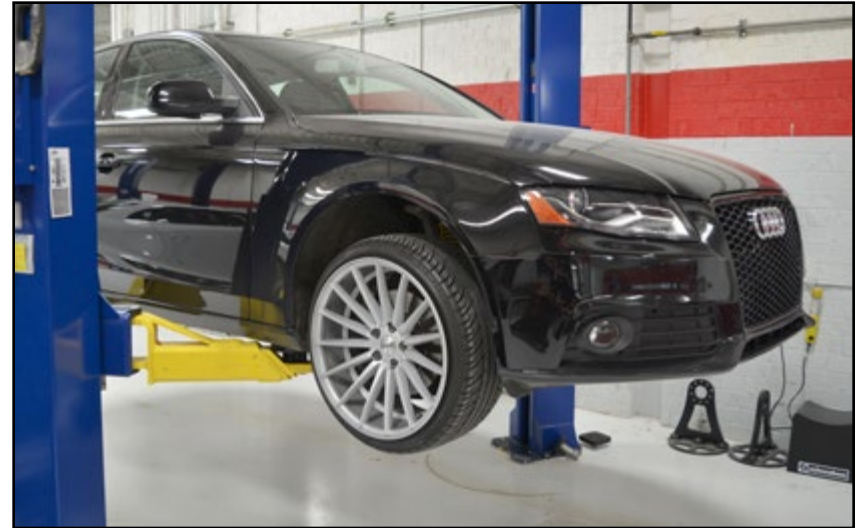


NEVER get underneath a vehicle that is supported only by a jack, and **ALWAYS** make sure that the vehicle is securely supported on jack stands.

INSTALLING THE TRANSMISSION MOUNT INSERT

Step 1: Hydraulic Floor Jack, Jack Stands

Safely lift and support the vehicle. In the photo we are using an automotive lift, but safely supporting the front of the vehicle on jack stands will give you plenty of room to work.

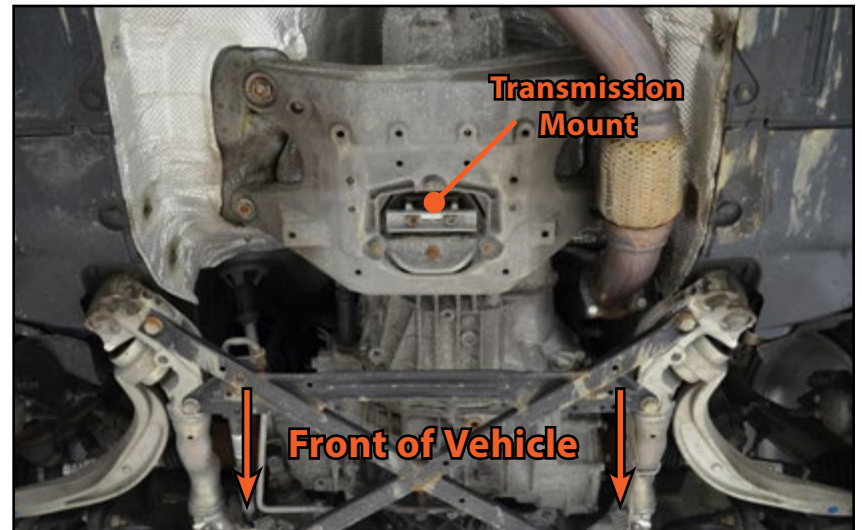


Step 2:

The transmission mount is located just behind the front subframe, this is what we will be upgrading today.



NOTE: From this point forward, every photo of the transmission mount will be taken from behind the mount, facing towards the front of the vehicle.



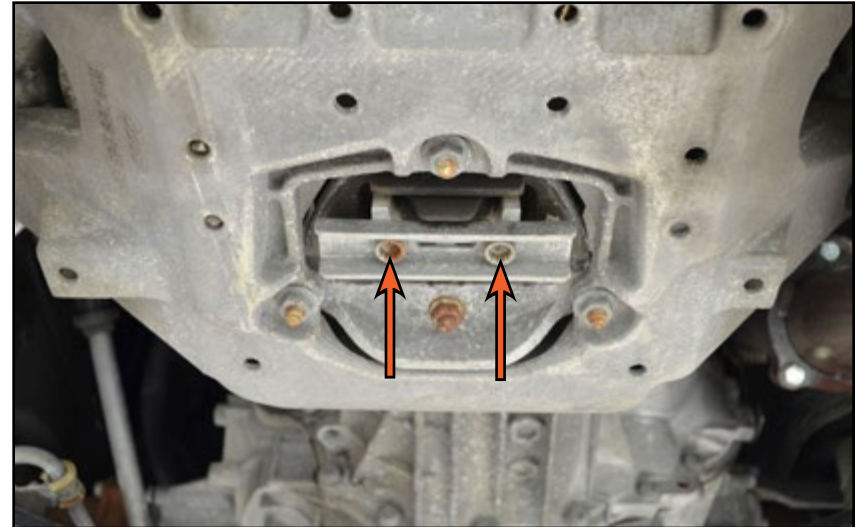
INSTALLING THE TRANSMISSION MOUNT INSERT

Step 3: M10 Triple Square Socket & Ratchet/Breaker Bar

Loosen and remove the two bolts and the small bracket which secure the transmission mount to the transmission cradle.



TECH TIP: These are “Torque To Yield” bolts and MUST NOT be reused. Replacement bolts are included in the kit.



Step 4:

Inspect the gap around the stock transmission mount and clean out any dirt or debris which may be present. If the mount is cracked or worn out, it should be replaced in order to get the maximum benefit from your new mount insert kit.



INSTALLING THE TRANSMISSION MOUNT INSERT

Step 5:

Locate the two “ears” which protrude upwards from the base of the new transmission mount insert. Apply a light coating of the supplied polyurethane bushing grease to both “ears”.



NOTE: There is no need to apply the grease to the entire bushing, only the ears should be greased.



Step 6:

Slide the transmission mount insert upwards into the stock transmission mount. Please take note of the shapes of both the stock mount and the new mount insert, the mount insert is designed to follow the shape of the stock mount, do not install the mount insert backwards.



INSTALLING THE TRANSMISSION MOUNT INSERT

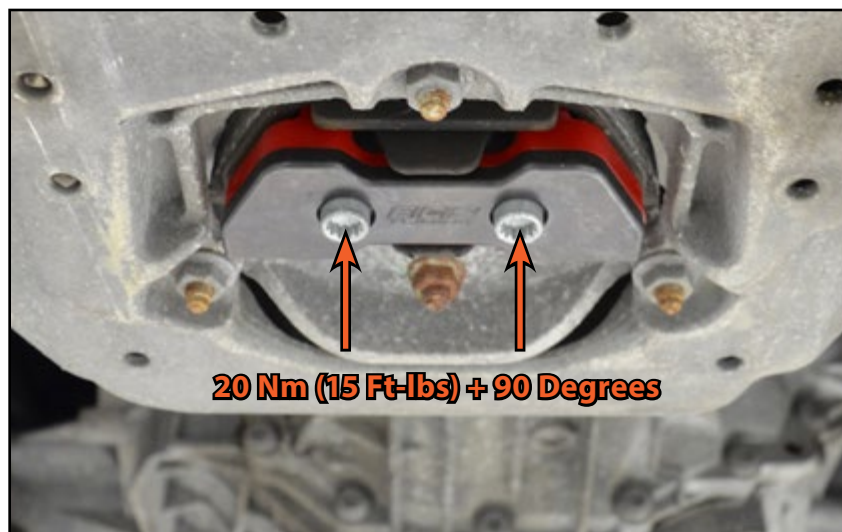
Step 7:

Insert the new mount bolts through the new mount plate, then thread them into the transmission mount **BY HAND**.



Step 8: M10 Triple Square Socket & Torque Wrench

Torque the two mount bolts to 20 Nm (15 Ft-lbs) + 90 degrees.



SCHWABEN - BUILD THE ULTIMATE TOOL COLLECTION

At ECS Tuning, we carry a line of high quality Schwaben Tools and Equipment to help you build your ultimate tool collection. Never before has affordability and quality been so closely related. Our entire Schwaben line is subjected to strict in house testing for strength and durability. See what we have to offer and equip your garage without breaking the bank.



Your Transmission Insert Kit Installation is complete!



These instructions are provided as a courtesy by ECS Tuning

Proper service and repair procedures are vital to the safe, reliable operation of all motor vehicles as well as the personal safety of those performing the repairs. Standard safety procedures and precautions (including use of safety goggles and proper tools and equipment) should be followed at all times to eliminate the possibility of personal injury or improper service which could damage the vehicle or compromise its safety.

Although this material has been prepared with the intent to provide reliable information, no warranty (express or implied) is made as to its accuracy or completeness. Neither is any liability assumed for loss or damage resulting from reliance on this material. SPECIFICALLY, NO WARRANTY OF MERCHANTABILITY, FITNESS FOR A PARTICULAR PURPOSE OR ANY OTHER WARRANTY IS MADE OR TO BE IMPLIED WITH RESPECT TO THIS MATERIAL. In no event will ECS Tuning, Incorporated or its affiliates be liable for any damages, direct or indirect, consequential or compensatory, arising out of the use of this material.