

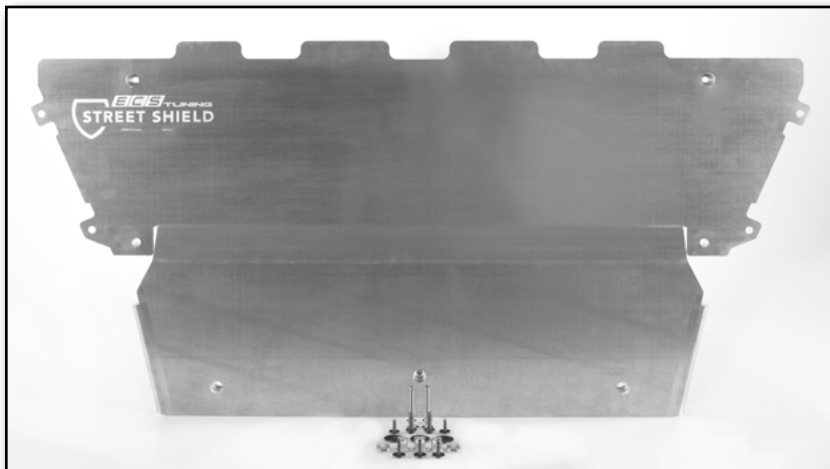


Audi B9 Street Shield Skid Plate Installation Instructions - [ES3411957](#)



Skill Level 1 - Easy

**Basic Skills
Required**



Proper service and repair procedures are vital to the safe, reliable operation of all motor vehicles as well as the personal safety of those performing the repairs. Standard safety procedures and precautions (including use of safety goggles and proper tools and equipment) should be followed at all times to eliminate the possibility of personal injury or improper service which could damage the vehicle or compromise its safety.

INTRODUCTION

The Project:

Today we're going to install our new Audi B9 Street Shield Skid Plate. We'll be working on our B9 A4, but the installation procedure is the same for the B9 S4 as well. This only requires a few basic tools, and will only take about 30 minutes of your time. We are installing it on a lift, but all you really need is a little extra room under the front so whether you support your car on jack stands or drive it up on ramps, you'll have plenty of room.



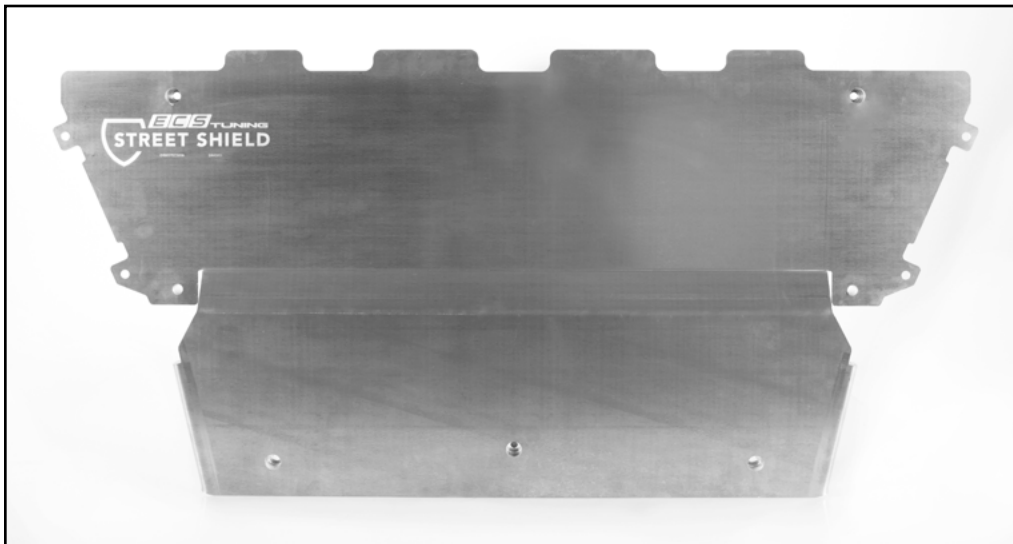
Here's all the tools you'll need:

1. 13mm Socket & Ratchet
2. T25 Torx Driver
3. T30 Torx Driver
4. 5mm Hex (Allen)
5. Pick

TABLE OF CONTENTS

Installation and Safety Information	pg.4
Removing the OEM Insulation Panel.....	pg.5
Replacing the Original Hardware	pg.6
Installing the New Street Shield Skid Plate	pg.7
Schwaben Tools	pg.12

KIT CONTENTS



Street Shield Skid Plate



Hardware Kit

INSTALLATION NOTES

- **RH** refers to the *passenger side* of the vehicle.
- **LH** refers to the *driver side* of the vehicle.
- Always use the proper torque specifications.
- If applicable to this installation, torque specifications will be listed throughout the document and at the end as well.
- Please read all of these instructions and familiarize yourself with the complete process **BEFORE** you begin.

GENERAL PREPARATION AND SAFETY INFORMATION

ECS Tuning cares about your health and safety, please read the following safety information. This information pertains to automotive service in general, and while it may not pertain to every job you do, please remember and share these important safety tips.

- Park your car in a safe, well lit, level area.
- Shut the engine off and remove the key from the ignition switch.
- Make sure any remote start devices are properly disabled.
- **ALWAYS** wear safety glasses.
- Make sure the parking brake is applied until the vehicle is safely lifted and supported.
- If using an automotive lift, be sure and utilize the factory specified lift points.
- Lifting a vehicle in an incorrect location can cause damage to the suspension/running gear.
- When lifting a vehicle using a jack, always utilize the factory specified lift points.
- Lifting a vehicle in an incorrect location can cause damage to the suspension/running gear.
- **ALWAYS** support the vehicle with jack stands.
- Always read and follow all safety information and warnings for the equipment you are using.

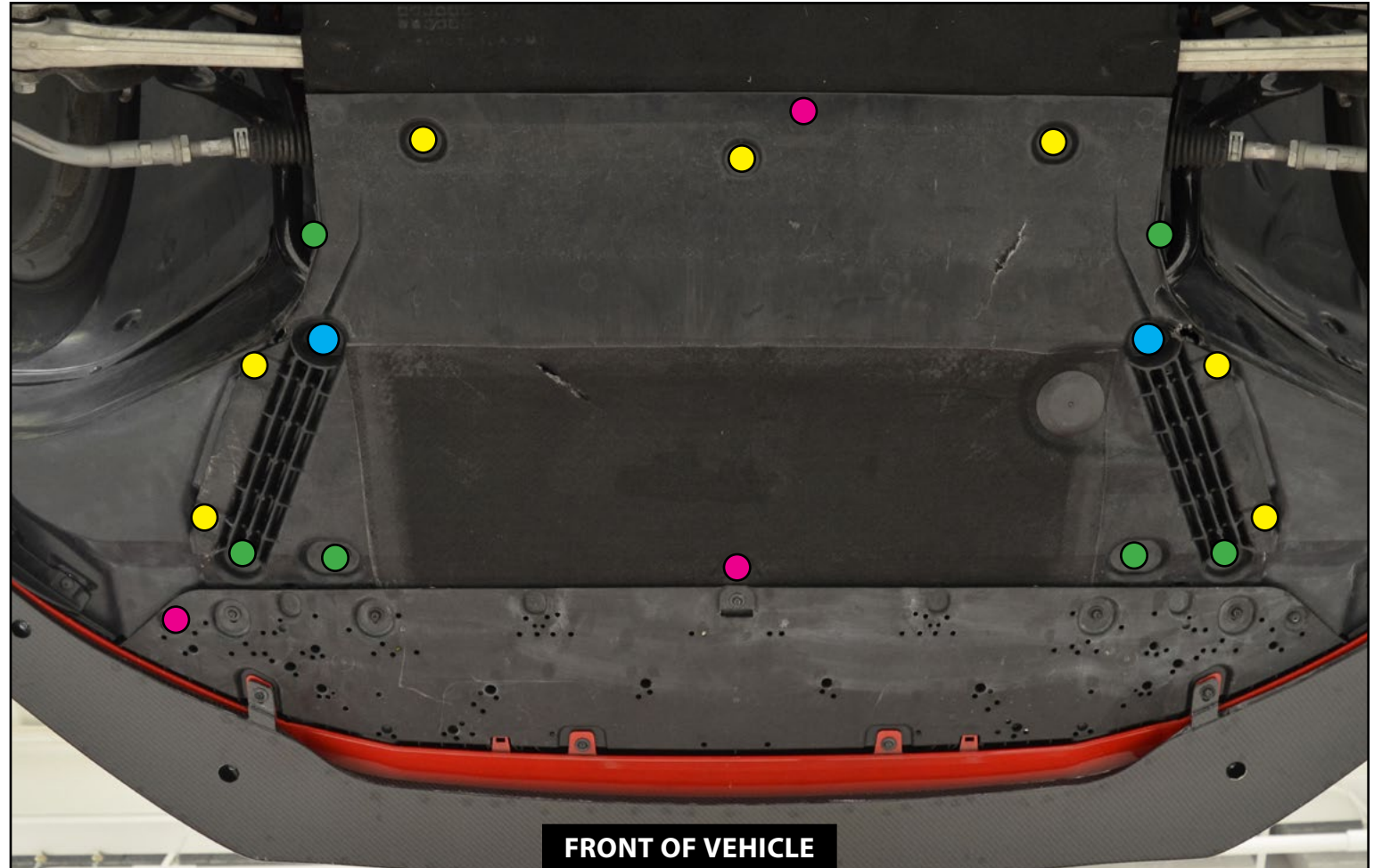


NEVER get underneath a vehicle that is supported only by a jack, and **ALWAYS** make sure that the vehicle is securely supported on jack stands.

REMOVING THE OEM INSULATION PANEL

Step 1:

Safely lift and support the vehicle. Remove all of the fasteners from the OEM insulation panel using the photo on the right and the color guide below it as a reference.



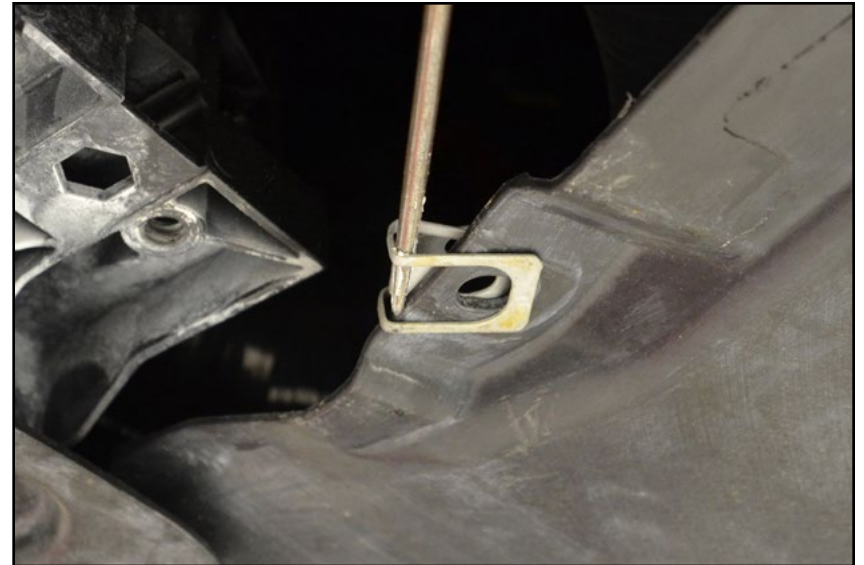
FRONT OF VEHICLE

- T25 dowel pin (**QTY 7**)
- T25 screw (**QTY 3**)
- T30 screw (**QTY 6**)
- 5mm hex (allen) bolt (**QTY 2**)

REPLACING THE ORIGINAL HARDWARE

Step 1: Small pick or screwdriver

Locate the four speed nuts on the lower fender liners. Pry them all off using a small pick or screwdriver and replace them with the new ones included in the kit.



Step 2: Small pick or screwdriver

Locate the three dowel pin clips in the subframe. Pry them all out using a small pick or screwdriver and replace them with the new ones included in the kit.



INSTALLING THE NEW STREET SHIELD SKID PLATE

Step 1: T25 Torx, Trim Removal Tool

Remove the five T25 screws which secure the LH lower fender liner (highlighted in **YELLOW**) and pull out the push rivet (highlighted in **BLUE**).



Step 2:

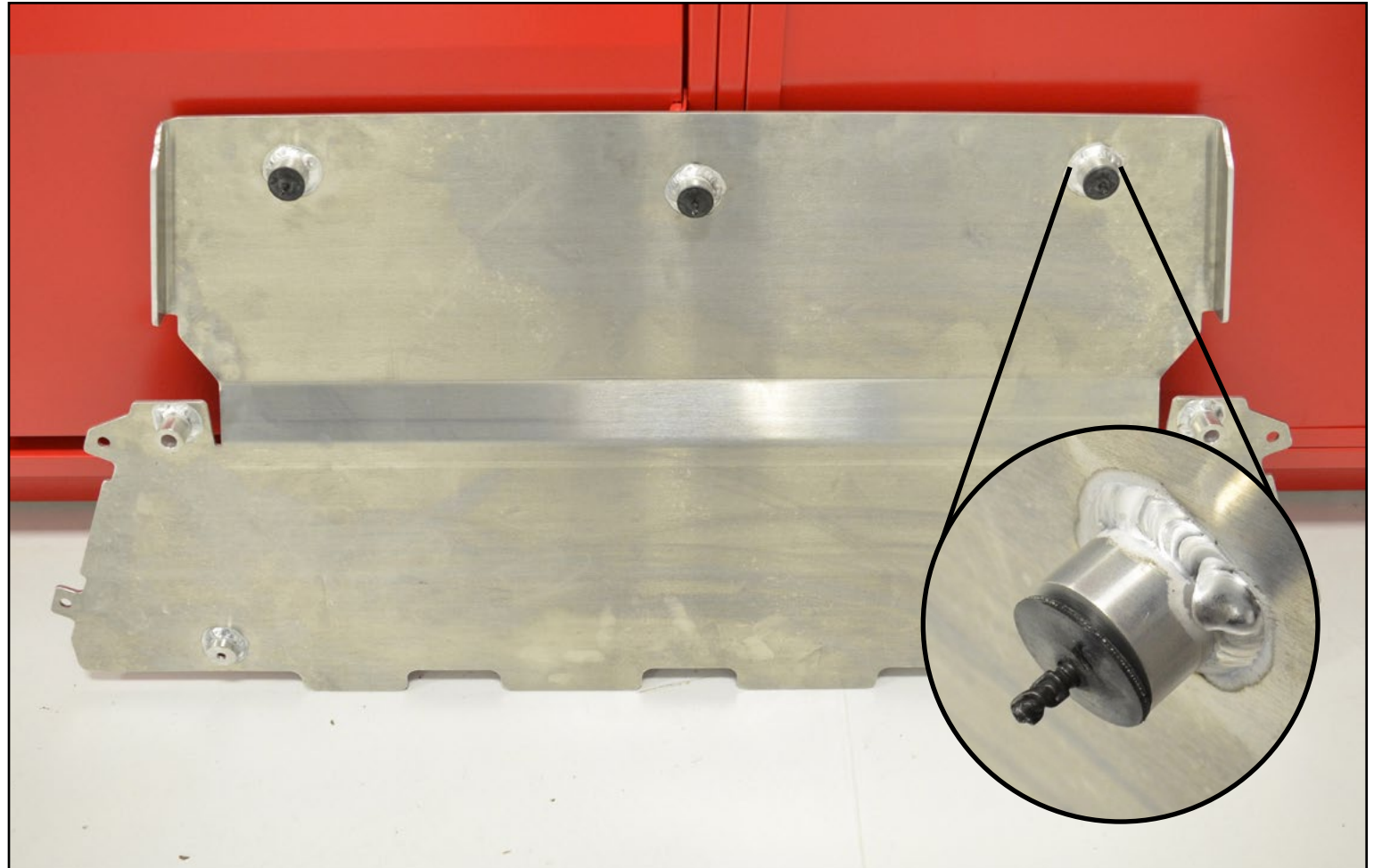
Remove the LH lower fender liner from the vehicle, releasing the drain hose from the clip as you pull the liner out.



INSTALLING THE NEW STREET SHIELD SKID PLATE

Step 3:

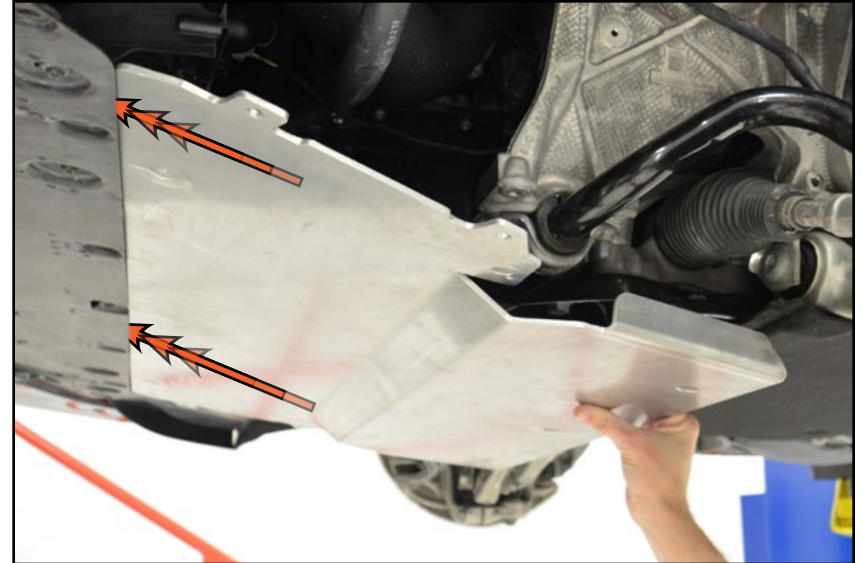
Install three of the new T25 dowel pins through the rearmost holes in the new street shield, then use the included rubber washers to secure them into place. This will hold the dowel pins in place while you lift the street shield into position.



INSTALLING THE NEW STREET SHIELD SKID PLATE

Step 4:

Slide the street shield into place, making sure the tabs on the front edge fit into the lower core support as shown.



Step 5:

Slide the street shield from left to right, making sure the tab on the RH side fits into the RH lower fender liner as shown.



INSTALLING THE NEW STREET SHIELD SKID PLATE

Step 6: 5mm Hex (Allen)

While still holding the street shield up, thread each of the included M8x45mm screws through one of the M8 stainless washers, and into the subframe. Leave these bolts loose at this time, we may still need to shift the street shield around as we install the remaining hardware.



Step 7: T25 Torx

Reinstall the LH lower fender liner, being sure to align the following:

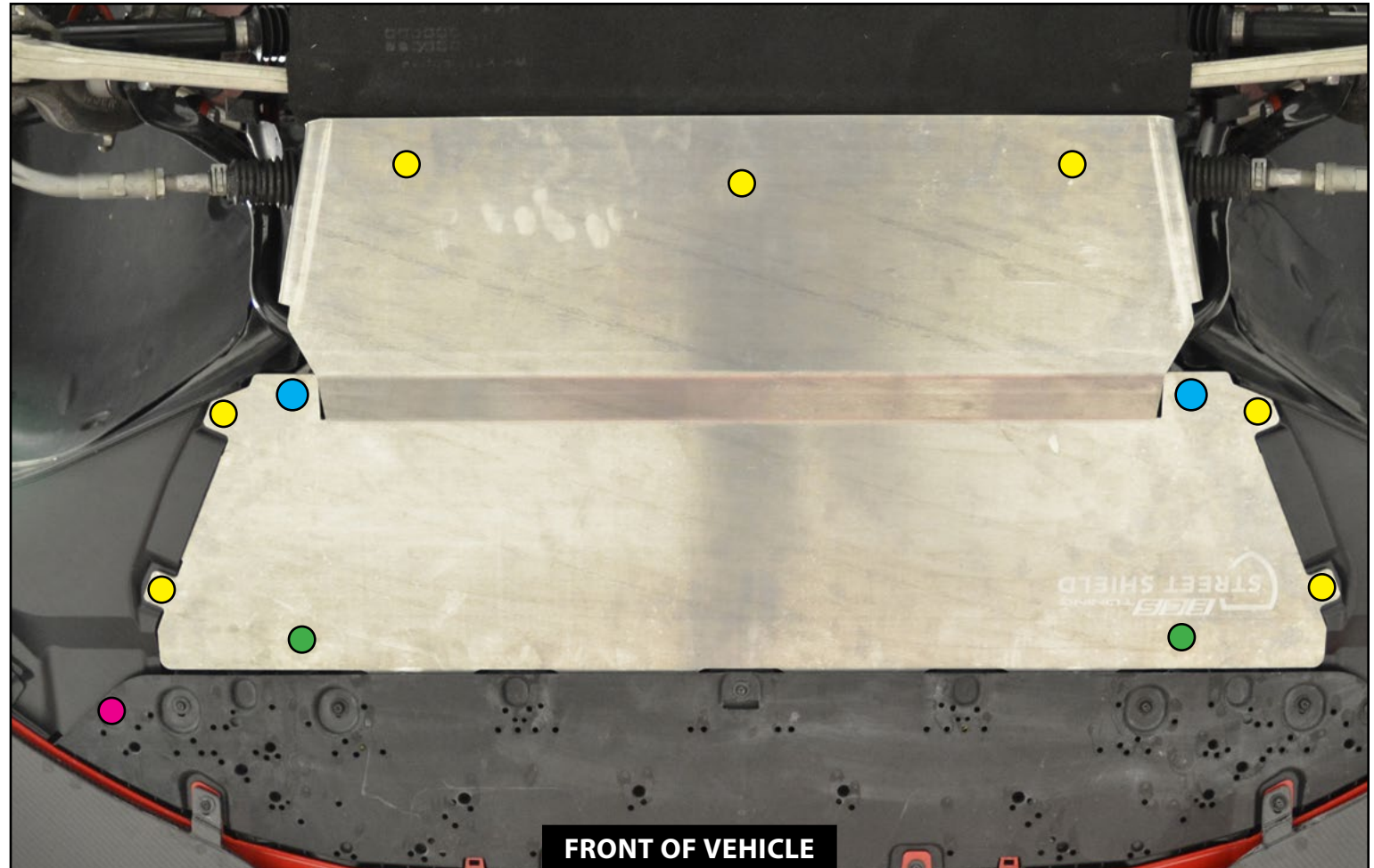
- Align the tab on the LH side of the street shield with the LH lower fender liner, just like we did with the RH side in step 5.
- Align the LH lower fender liner ear on the inside edge of the street shield as shown.



INSTALLING THE NEW STREET SHIELD SKID PLATE

Step 8:

Install all remaining fasteners into the street shield using the photo on the right and the color guide below it as a reference, then hand tighten them.



- T25 dowel pin (**QTY 7**)
- T25 screw (**QTY 1**)
- T30 screw (**QTY 2**)
- 5mm hex (allen) bolt (**QTY 2**)

SCHWABEN - BUILD THE ULTIMATE TOOL COLLECTION

At ECS Tuning, we carry a line of high quality Schwaben Tools and Equipment to help you build your ultimate tool collection. Never before has affordability and quality been so closely related. Our entire Schwaben line is subjected to strict in house testing for strength and durability. See what we have to offer and equip your garage without breaking the bank.



Your Street Shield Skid Plate installation is complete!



These instructions are provided as a courtesy by ECS Tuning

Proper service and repair procedures are vital to the safe, reliable operation of all motor vehicles as well as the personal safety of those performing the repairs. Standard safety procedures and precautions (including use of safety goggles and proper tools and equipment) should be followed at all times to eliminate the possibility of personal injury or improper service which could damage the vehicle or compromise its safety.

Although this material has been prepared with the intent to provide reliable information, no warranty (express or implied) is made as to its accuracy or completeness. Neither is any liability assumed for loss or damage resulting from reliance on this material. SPECIFICALLY, NO WARRANTY OF MERCHANTABILITY, FITNESS FOR A PARTICULAR PURPOSE OR ANY OTHER WARRANTY IS MADE OR TO BE IMPLIED WITH RESPECT TO THIS MATERIAL. In no event will ECS Tuning, Incorporated or its affiliates be liable for any damages, direct or indirect, consequential or compensatory, arising out of the use of this material.