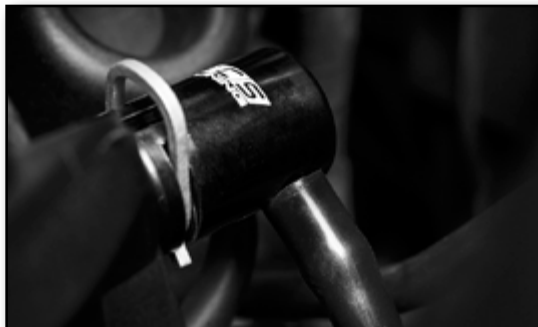


**ECS TUNING**

Audi B9 A4 2.0T

Manifold Boost Tap Installation

Throttle Body Boost Tap Installation



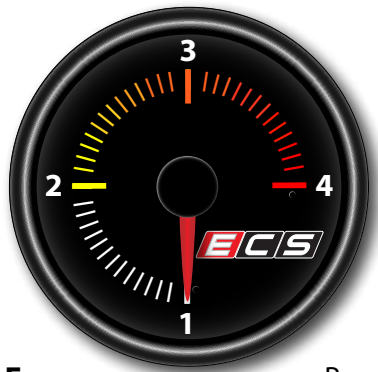
Proper service and repair procedures are vital to the safe, reliable operation of all motor vehicles as well as the personal safety of those performing the repairs. Standard safety procedures and precautions (including use of safety goggles and proper tools and equipment) should be followed at all times to eliminate the possibility of personal injury or improper service which could damage the vehicle or compromise its safety.

## INTRODUCTION

# ECS Tuning Audi B9 A4 2.0T Manifold and Throttle Body Boost Taps

**Modern Engines** are required to operate with high efficiency and low emissions. It's because of these strict regulations that the intake, exhaust, and crankcase ventilation systems are designed to work together, instead of being completely different systems. Vacuum hoses are almost a thing of the past, especially any that you can actually *get* to, and when you can actually find one, such as for turbo control, it's best to leave it undisturbed so you don't create an unwanted leak. So when you need a vacuum port to hook up a boost gauge, supply a vacuum operated exhaust, or connect a vacuum gauge for diagnostics, quite often you're wondering where to look. Luckily, ECS Tuning has been solving this problem for a number of years, and as with many other models, we have an affordable, effective solution for your Audi B9 A4. We have two, in-house designed boost taps that can be easily installed and tailored specifically to your car.

## ECS Difficulty Gauge



1 - Easy                      Pro - 4  
 2 - Moderate              Advanced - 3

## Manifold Boost Tap [ES3136138](#)

Our manifold boost tap utilizes the large, unused vacuum port on the end of the intake manifold. It features a very quick and easy installation requiring only a few basic tools, and the specially designed piercing sleeve that is included with the tap. You have the option of installing up to three ports, and it can be removed in minutes so you can change the port number or configuration down the road if you so desire. It's also made from billet aluminum and etched with the ECS Tuning logo, so it'll look great when you open the hood!

## Throttle Body Boost Tap [ES3136139](#)

Our throttle body boost tap is a slimline design that installs between the throttle body and intake manifold. It's very thin, so your vehicles operating systems don't even know it's there. This design keeps it secluded if you're looking for an ultra clean or a more stock appearance. Up to two ports can be installed, and you can easily add or remove them without removing the boost tap. Also made from billet aluminum, quality is second to none. This is a true bolt on piece, and the installation is completely reversible if you need to return to stock.

*Thank you for looking to ECS Tuning for all your performance and repair needs. We appreciate your business!*

## TABLE OF CONTENTS

Kit Contents.....	<a href="#">pg.4</a>
Required Tools and Equipment.....	<a href="#">pg.6</a>
Shop Supplies and Materials.....	<a href="#">pg.7</a>
Installation and Safety Information.....	<a href="#">pg.8</a>
Installing the Manifold Boost Tap.....	<a href="#">pg.9</a>
Installing the Throttle Body Boost Tap.....	<a href="#">pg.15</a>
Schwaben Tools .....	<a href="#">pg.21</a>

**KIT CONTENTS - MANIFOLD BOOST TAP**



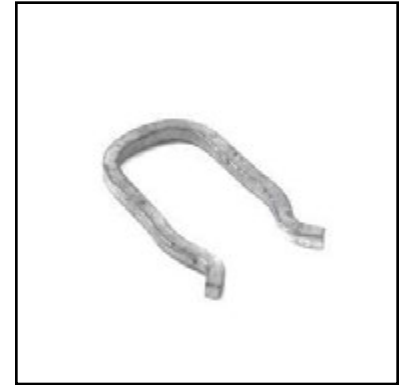
Boost Tap



Threaded Nipples (3)



Port Plugs (3)



Boost Tap Clip



Threadlocker



Manifold Piercing Sleeve

## KIT CONTENTS - THROTTLE BODY BOOST TAP



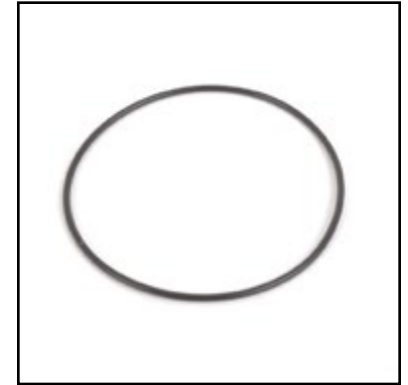
Boost Tap



Threaded Nipples (2)



Port Plugs (2)



Boost Tap O-Ring



Threadlocker



Grease Pack

**REQUIRED TOOLS**

Note: The tools required for each step will be listed by the step number throughout these instructions.

**Standard Automotive Tools**

**Required For This Install**

**Available On Our Website**

- Protecta-Sockets (for lug nuts).....[ES#2221243](#)
- 3/8" Drive Ratchet.....[ES#2765902](#)
- 3/8" Drive Torque Wrench.....[ES#2221245](#)
- 3/8" Drive Deep and Shallow Sockets .....[ES#2763772](#)
- 3/8" Drive Extensions.....[ES#2804822](#)
- Hydraulic Floor Jack.....[ES#240941](#)
- **Torx Drivers and Sockets** .....[ES#11417/8](#)
- 1/2" Drive Deep and Shallow Sockets .....[ES#2839106](#)
- 1/2" Drive Ratchet
- 1/2" Drive Extensions
- 1/2" Drive Torque Wrench .....[ES#2221244](#)
- 1/2" Drive Breaker Bar.....[ES#2776653](#)
- File Set
- Air Nozzle/Blow Gun
- Bench Mounted Vise
- Crows Foot Wrenches
- Hook and Pick Tool Set.....[ES#2778980](#)

- **1/4" Drive Ratchet**.....[ES#2823235](#)
- 1/4" Drive Deep and Shallow Sockets.....[ES#2823235](#)
- **1/4" Drive Extensions**.....[ES#2823235](#)
- 1/4" Drive Torque Wrench
- Plier and Cutter Set.....[ES#2804496](#)
- **Flat and Phillips Screwdrivers**.....[ES#2225921](#)
- Jack Stands.....[ES#2763355](#)
- **Ball Pein Hammers**
- Pry Bar Set.....[ES#1899378](#)
- Electric/Cordless Drill
- Wire Strippers/Crimpers
- Adjustable (Crescent) Type Wrenches
- Drill Bits
- Punch and Chisel Set
- **Hex Bit (Allen) Wrenches and Sockets** .....[ES#11420](#)
- Thread Repair Tools .....[ES#1306824](#)
- Open/Boxed End Wrench Set.....[ES#2765907](#)

## SHOP SUPPLIES AND MATERIALS

**Standard Shop Supply Recommendations:** We recommend that you have a standard inventory of automotive shop supplies before beginning this or any automotive repair procedure. The following list outlines the basic shop supplies that we like to keep on hand. Shop supplies with a hyperlink are available on our website.

- Hand Cleaner/Degreaser - [Click Here](#)
- Pig Mats - for protecting your garage floor and work area from spills and stains - [Click Here](#)
- Spray detailer - for rapid cleaning of anything that comes into contact with your paint such as brake fluid - [Click Here](#)
- Micro Fiber Towels - for cleaning the paint on your car - [Click Here](#)
- Latex Gloves - for the extra oily and dirty jobs - [Click Here](#)
- Medium and High Strength Loctite Thread lock compound - to prevent bolts from backing out - [Click Here](#)
- Anti-Seize Compound - to prevent seizing, galling, and corrosion of fasteners - [Click Here](#)
- Aerosol Brake/Parts Cleaner - for cleaning and degreasing parts
- Shop Rags - used for wiping hands, tools, and parts
- Penetrating oil - for helping to free rusted or stuck bolts and nuts
- Mechanics wire - for securing components out of the way
- Silicone spray lube - for rubber components such as exhaust hangers
- Paint Marker - for marking installation positions or bolts during a torquing sequence
- Plastic Wire Ties/Zip Ties - for routing and securing wiring harnesses or vacuum hoses
- Electrical tape - for wrapping wiring harnesses or temporary securing of small components

## INSTALLATION NOTES

- **RH** refers to the *passenger side* of the vehicle.
- **LH** refers to the *driver side* of the vehicle.
- Always use the proper torque specifications.
- If applicable to this installation, torque specifications will be listed throughout the document and at the end as well.
- Please read all of these instructions and familiarize yourself with the complete process **BEFORE** you begin.

## PREPARATION AND SAFETY INFORMATION

ECS Tuning cares about your health and safety. Please read the following safety information. This information pertains to automotive service in general, and while it may not pertain to every job you do, please remember and share these important safety tips.

- Park your car in a safe, well lit, level area.
- Shut the engine off and remove the key from the ignition switch.
- Make sure any remote start devices are properly disabled.
- **ALWAYS** wear safety glasses.
- Make sure the parking brake is applied until the vehicle is safely lifted and supported.
- If using an automotive lift, be sure and utilize the factory specified lift points. Lifting a vehicle in an incorrect location can cause damage to the suspension/running gear.
- When lifting a vehicle using a jack, always utilize the factory specified lift points. Lifting a vehicle in an incorrect location can cause damage to the suspension/running gear. **ALWAYS** support the vehicle with jack stands.
- **ALWAYS** read and follow all safety information and warnings for the equipment you are using.



**Never get underneath a vehicle that is supported only by a jack. Always make sure that the vehicle is securely supported on jack stands.**



## INSTALLING THE MANIFOLD BOOST TAP

### Step 1:

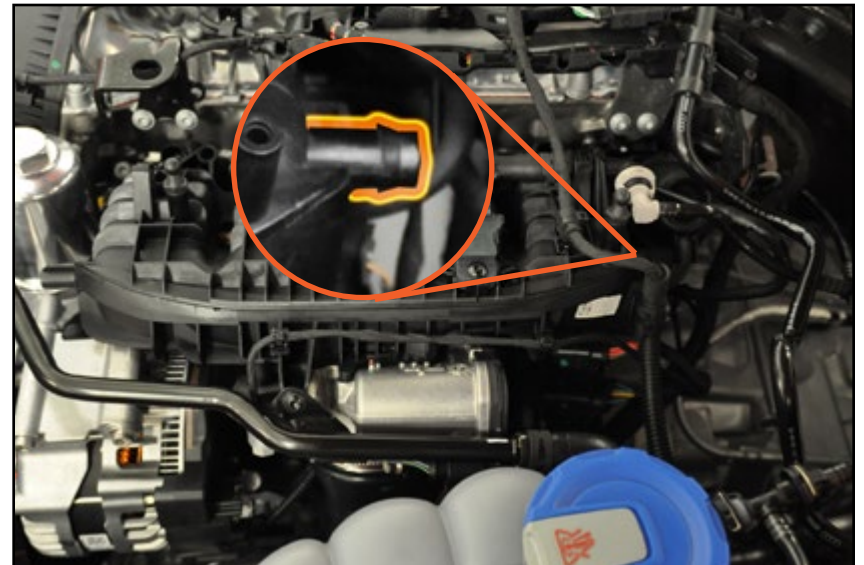
With the hood closed, start your engine and let it run until it reaches operating temperature.



Do not fail to warm up the engine as described. The intake manifold must be warm to the touch before you proceed. If you attempt to pierce the intake manifold while it is cold, it may crack or splinter.

### Step 2:

Locate the large, unused vacuum port on the intake manifold. It is located near the seam of the manifold, in the rear of the engine bay.



## INSTALLING THE MANIFOLD BOOST TAP

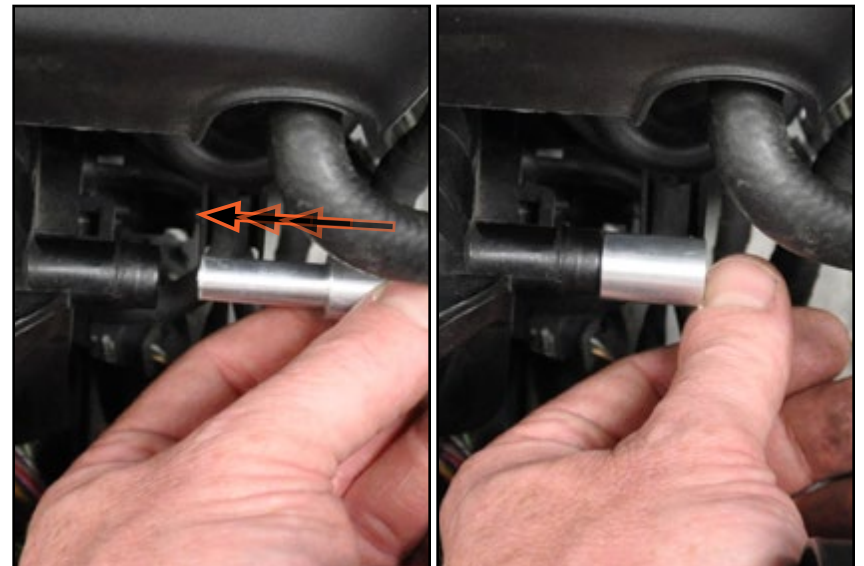
### Step 3:

Remove the nail from the center of the piercing sleeve.



### Step 4:

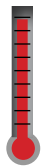
Slide the piercing sleeve into the vacuum port on the intake manifold until it is fully seated.



## INSTALLING THE MANIFOLD BOOST TAP

### Step 5:

Slide the nail into the end of the piercing sleeve until you feel it hit the closed end of the vacuum port.

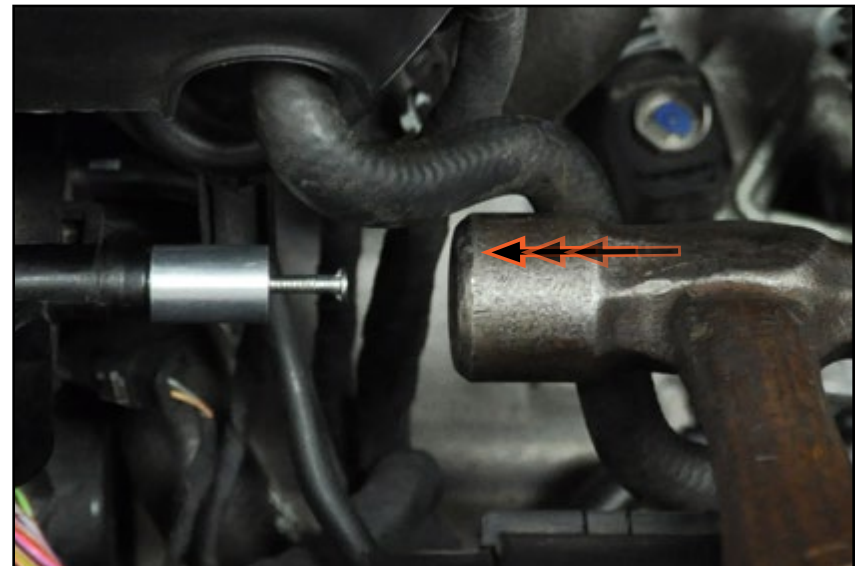
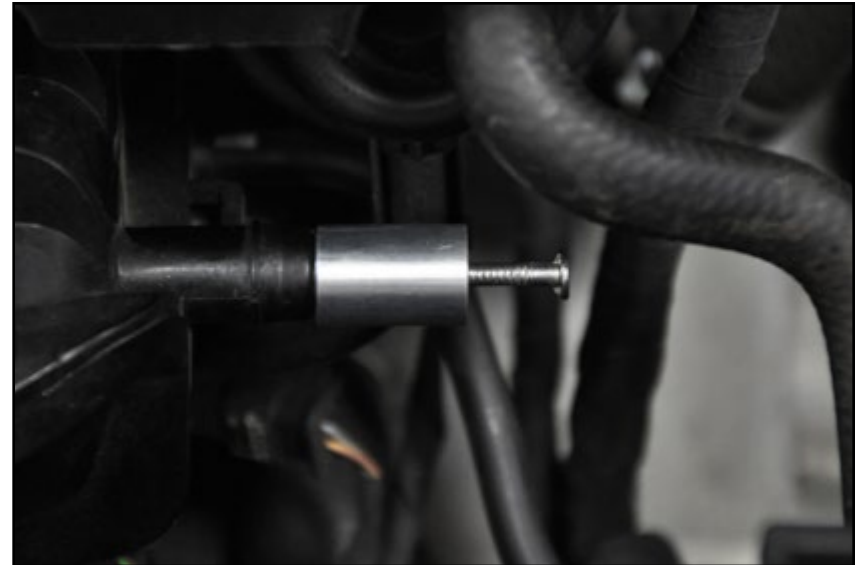


### **Intake Manifold Temperature Warning**

Don't forget, the engine should be completely warmed up as described in step 1 before you proceed.

### Step 6:

Using a ball peen hammer, not a really big one - the 16 oz hammer we are using here is plenty big enough, tap lightly on the nail in the piercing sleeve, just as if you are starting a nail in a piece of wood. After you tap on it just a few times, you will feel it begin to pierce the manifold.



## INSTALLING THE MANIFOLD BOOST TAP

### Step 7:

Just a couple more taps and the nail will easily pierce through the manifold. When the head of the nail is seated against the surface of the piercing sleeve as it is in this photo, you have successfully pierced the manifold.



### Step 8:

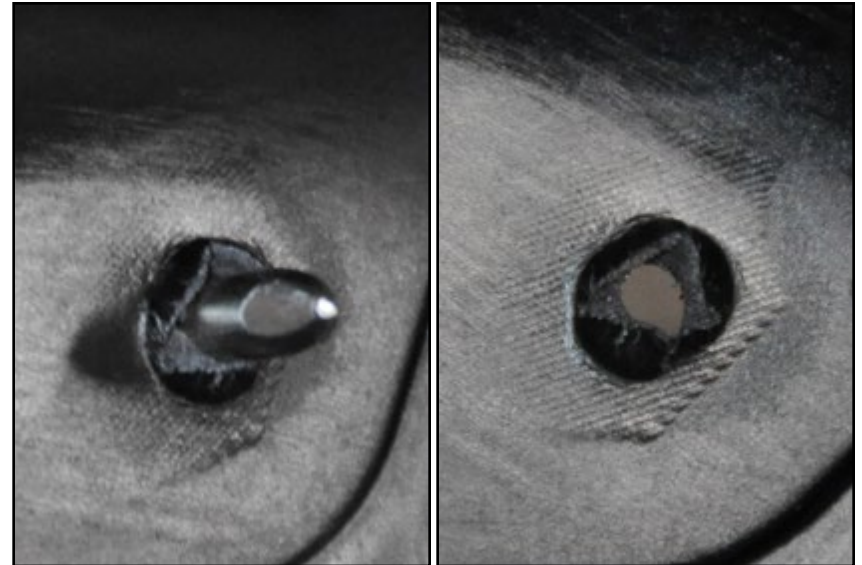
Pull the piercing sleeve and the nail out of the intake manifold vacuum port.



## INSTALLING THE MANIFOLD BOOST TAP

### Step 9:

These unedited, cut-away views of the inside of the intake manifold demonstrate how the nail will smoothly and evenly pierce through the plastic, creating a perfect hole with absolutely no break off and no burrs.



### Step 10: 3mm Allen Wrench

Install the nipples and plugs into your boost tap depending on how many ports you need. Use the following installation guidelines:

**Nipples:** Install them using a drop of threadlocker, tighten them with your fingers.

**Plugs:** Install them using a drop of threadlocker, thread them in just until they are flush with the chamfer on the side of the boost tap. The threadlocker will seal them and hold them in place.



## INSTALLING THE MANIFOLD BOOST TAP

### Step 11:

Push the boost tap onto the intake manifold vacuum port until it is fully seated, making sure to orient the nipple(s) where you want them.



### Step 12:

Push the retaining clip into the groove in the boost tap until it is fully seated.

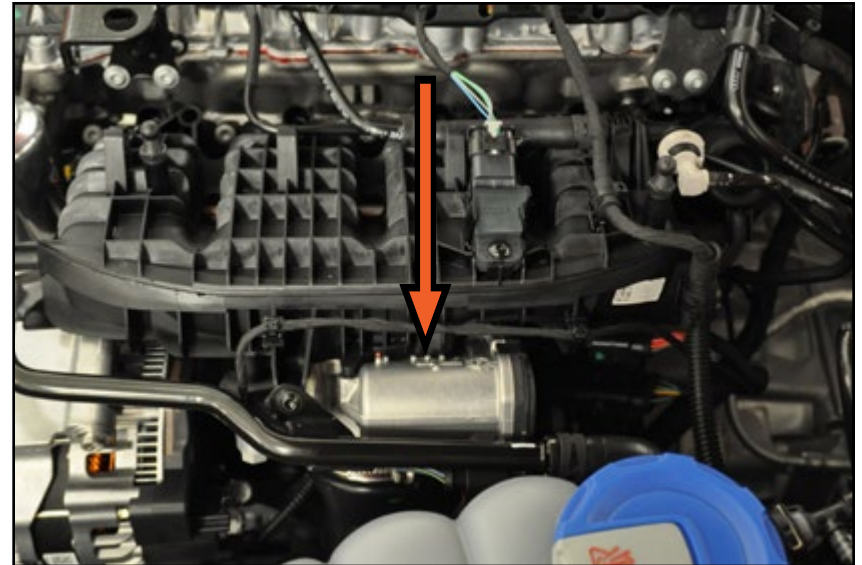
***Connect the hose for your accessories  
and your installation is complete!***



## INSTALLING THE THROTTLE BODY BOOST TAP

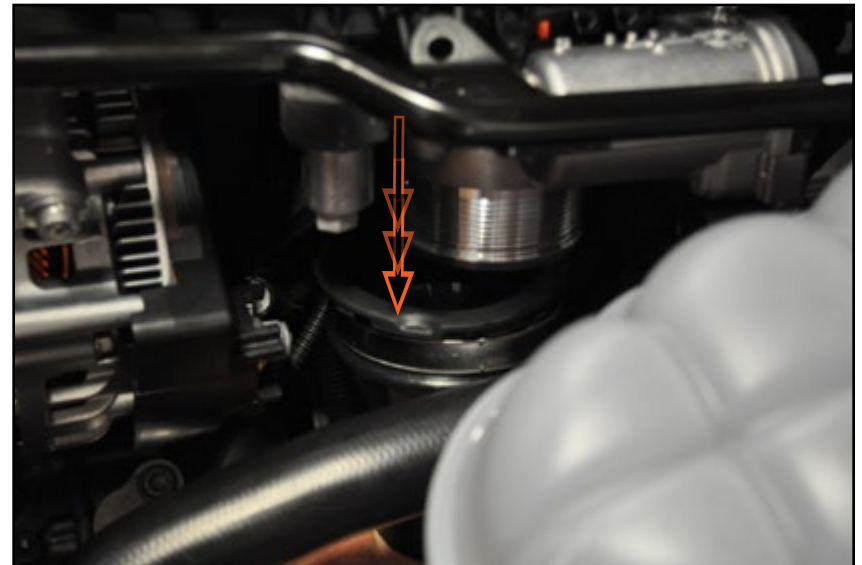
### Step 1:

The throttle body boost tap will be installed between the intake manifold and throttle body. It's not necessary to remove the manifold, and you can actually just lower the throttle body slightly, then slide the boost tap in place. It's difficult to get pictures of the process, so we're going to show you some of them with the manifold off the car for clarity.



### Step 2: Flat Blade Screwdriver

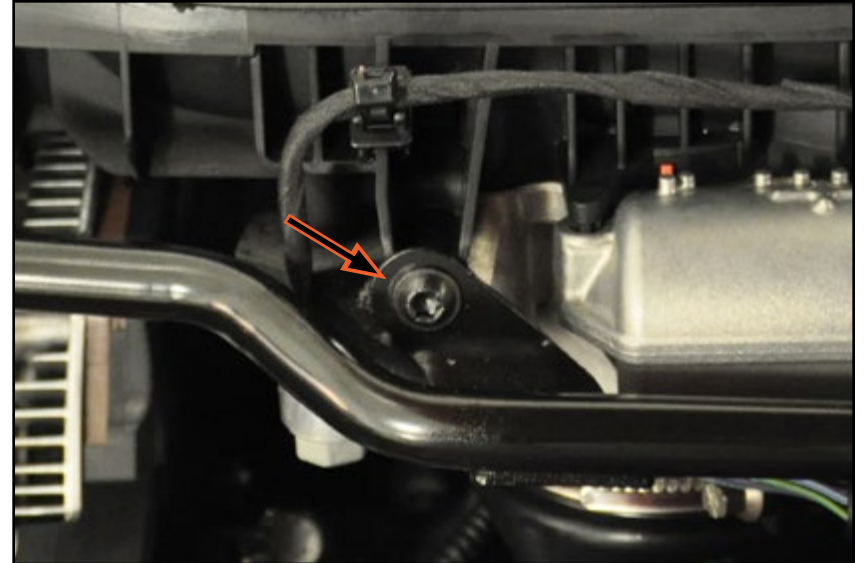
Loosen the hose clamp on the throttle body hose and push the hose down off of the throttle body.



## INSTALLING THE THROTTLE BODY BOOST TAP

### Step 3: T30 Torx

In order to gain a little more working room, remove the T30 screw securing the coolant pipe to the intake manifold.



### Step 4:

Disconnect the throttle body electrical connector by pulling out the red locking tab, then squeezing it gently to release.

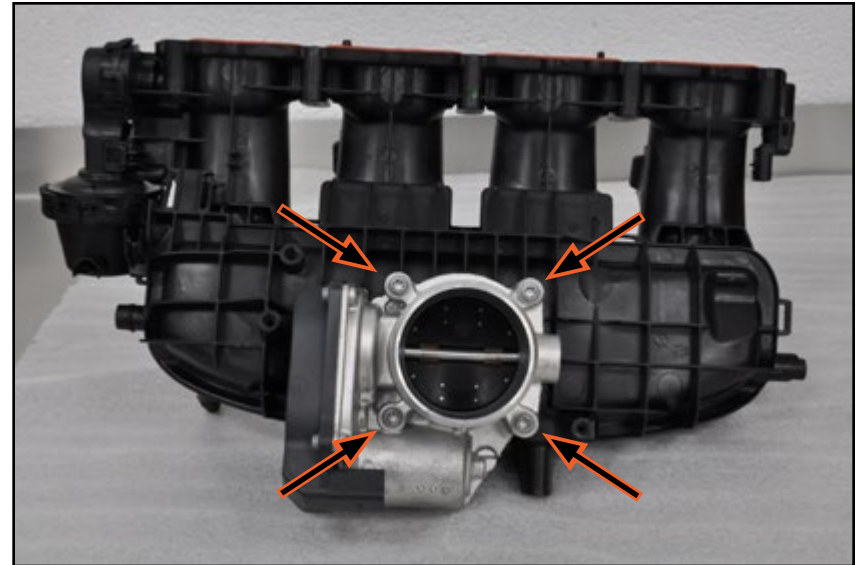




## INSTALLING THE THROTTLE BODY BOOST TAP

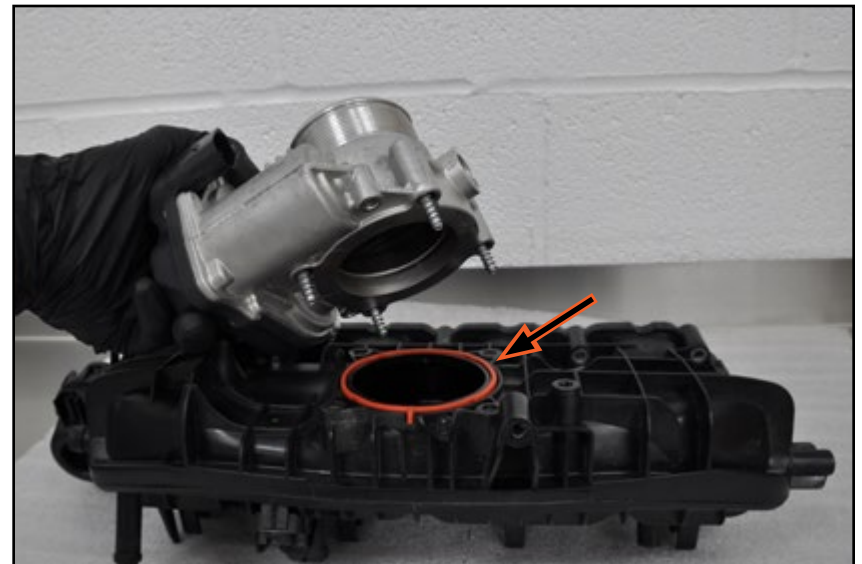
### Step 5: T30 Torx

Now you can remove the four screws that hold the throttle body to the manifold. You can get to them fairly easily, but it's hard to take a picture so we've removed the manifold to give you a better view.



### Step 6:

Here you can see that there is a seal between the manifold and throttle body. Make sure it stays seated on the manifold. Wipe the seal and the surface of the throttle body clean with a lint free rag.



## INSTALLING THE THROTTLE BODY BOOST TAP

### Step 7:

Note also the locating pin on the manifold and the hole in the throttle body housing. Make sure that these are lined up when you reinstall it.



### Step 8:

Apply a thin layer of the included grease onto the o-ring seal, then place it in the groove on the boost tap, making sure it is fully seated. The grease will hold the seal in place during installation, and can also be used to hold the intake manifold seal in place if necessary.



## INSTALLING THE THROTTLE BODY BOOST TAP

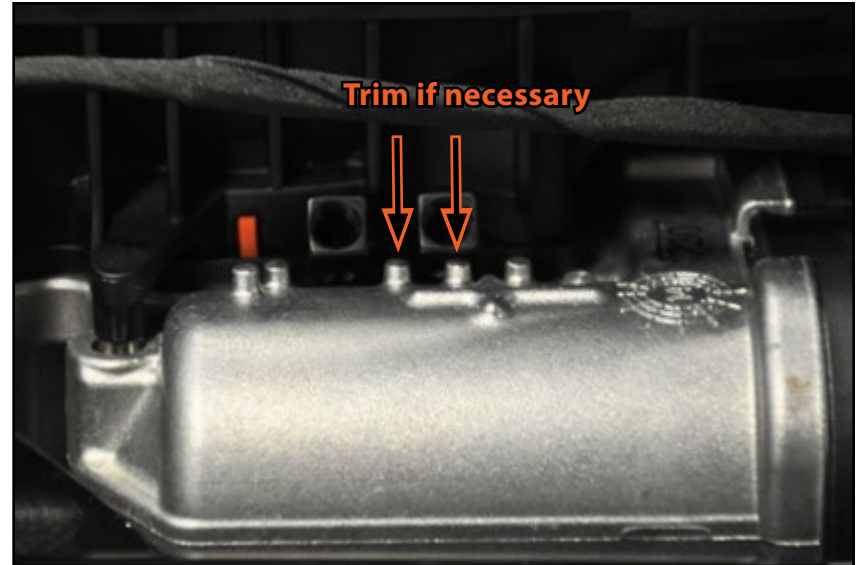
### Step 9: T30 Torx

Install the throttle body boost tap in place. The flat side goes against the manifold seal and the grooved side with the new seal goes against the throttle body.



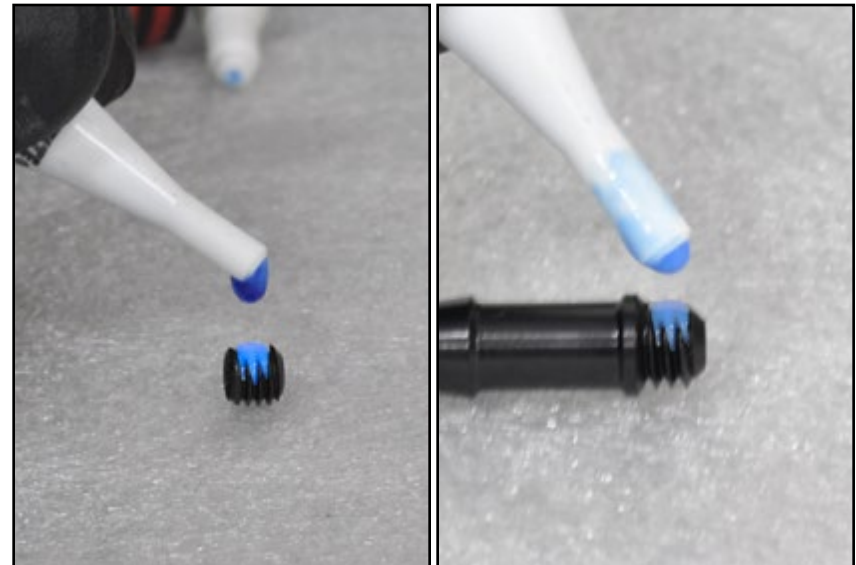
Pay close attention to the fit of the throttle body. In some cases you may have to file or lightly grind down the casting nubs on the throttle body housing (arrows). They may contact the boost tap.

The correct torque for the throttle body screws is 7 Nm (5 Ft-lbs).



### Step 10:

Apply a drop of the supplied thread locker to the threads of the nipple(s) and port plug based on how many ports you are going to use.



## INSTALLING THE THROTTLE BODY BOOST TAP

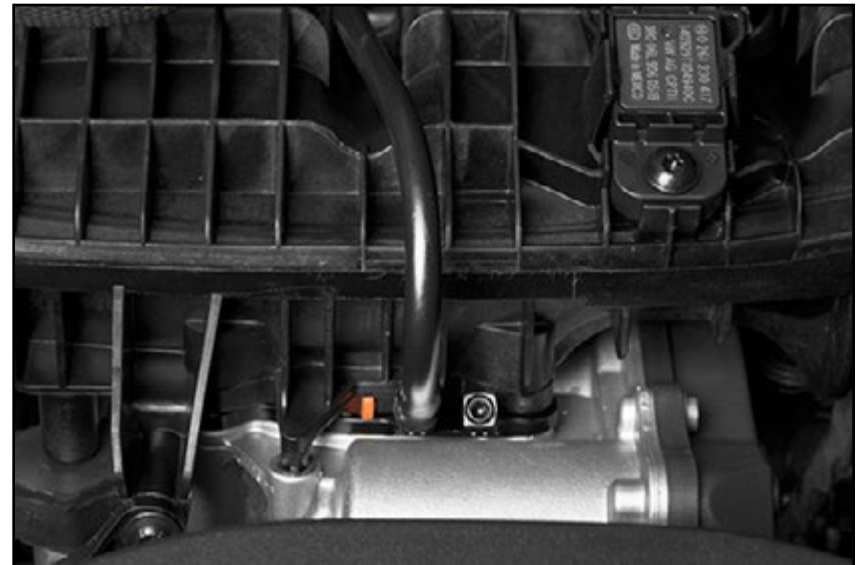
### Step 11: 3mm Allen

Install the boost nipple(s) and/or port plug and tighten them until they are snug. The port plugs require a 3mm Allen wrench, the boost nipple(s) can be installed by hand.



### Step 12:

Connect the hose(s) to the boost tap nipple(s), reassemble the remaining components, and your installation is complete!



# SCHWABEN - BUILD THE ULTIMATE TOOL COLLECTION

At ECS Tuning, we carry a line of high quality Schwaben tools and equipment to help you build your ultimate tool collection. Never before has affordability and quality been so closely related. Our entire Schwaben line is subjected to strict in house testing for strength and durability. See what we have to offer and equip your garage without breaking the bank.



## Your Audi B9 A4 Boost Tap Installation is complete!



These instructions are provided as a courtesy by ECS Tuning

Proper service and repair procedures are vital to the safe, reliable operation of all motor vehicles as well as the personal safety of those performing the repairs. Standard safety procedures and precautions (including use of safety goggles and proper tools and equipment) should be followed at all times to eliminate the possibility of personal injury or improper service which could damage the vehicle or compromise its safety.

Although this material has been prepared with the intent to provide reliable information, no warranty (express or implied) is made as to its accuracy or completeness. Neither is any liability assumed for loss or damage resulting from reliance on this material. SPECIFICALLY, NO WARRANTY OF MERCHANTABILITY, FITNESS FOR A PARTICULAR PURPOSE OR ANY OTHER WARRANTY IS MADE OR TO BE IMPLIED WITH RESPECT TO THIS MATERIAL. In no event will ECS Tuning, Incorporated or its affiliates be liable for any damages, direct or indirect, consequential or compensatory, arising out of the use of this material.