



ECS Tuning MK7 Paddle Shifters Installation Instructions

Skill Level 1 - Easy



Proper service and repair procedures are vital to the safe, reliable operation of all motor vehicles as well as the personal safety of those performing the repairs. Standard safety procedures and precautions (including use of safety goggles and proper tools and equipment) should be followed at all times to eliminate the possibility of personal injury or improper service which could damage the vehicle or compromise its safety.

INTRODUCTION

The Project:

Today we are going to be installing our ECS Tuning Paddle Shifters for the MK7. These shifters are constructed of durable aluminum and feature a clean and attractive anodized finish, providing you with some serious eye candy and the sporty feel you crave whenever you get behind the wheel. We offer a variety of anodized finishes as well as a sleek carbon fiber construction, so no matter your style there's sure to be a set to match. Installation is simple, as our paddles have been engineered to be a direct replacement for the stock paddles, utilizing the stock mounting hardware.

AVAILABLE FINISHES



Red Anodized



Clear Anodized



Black Anodized



Carbon Fiber

TABLE OF CONTENTS

Project Overview	pg.3
Installing the New Paddle Shifters	pg.4
Schwaben Tools	pg.8

PROJECT OVERVIEW

Installing the new ECS Tuning paddle shifters on your MK7 is quite a simple process. Using either an angled pick or a pair of needle-nosed pliers, pull the pin straight down from underneath each of the stock paddles, then, simply pull the paddles away to remove them from the steering wheel. To install the new paddles, slide them into place, slide the pin back through the bottom of each paddle until it clicks into place, and you're good to go!

For the purposes of this installation, we will be documenting the installation of the new paddles on a steering wheel that has been removed from the vehicle, however the process will be the same on the vehicle.



INSTALLING THE NEW PADDLE SHIFTERS

Step 1:

Turn the steering wheel 180° so that the bottom of the stock paddle shifters are facing upward. Using a pick or needle nose pliers, locate and grab the head of the pin that holds the paddle in place.



The head of the pin extrudes slightly and features a small groove around the perimeter, making it easy to grab using a pair of pliers or hook using the pick.

Step 2:

Gently pull the pin straight out from the paddle shifter and remove it.



INSTALLING THE NEW PADDLE SHIFTERS

Step 3:

Remove the stock paddle by pulling it out and away from the steering wheel.



Step 4:

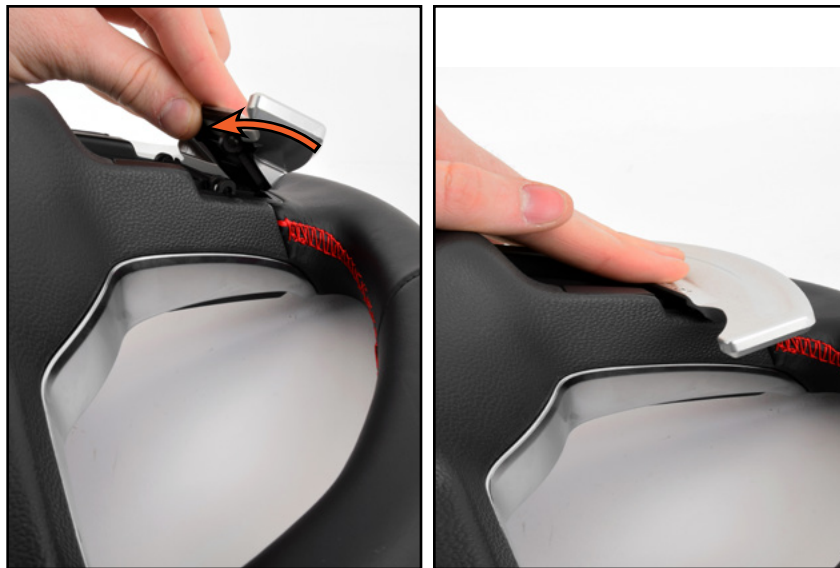
Locate the mounting tabs on the steering wheel, as well as the recessed area on the new paddle shifters, which holds them in place.



INSTALLING THE NEW PADDLE SHIFTERS

Step 5:

Slide the paddle into place, so that the mounting tabs on the steering wheel slide into the recessed area of the paddle, and push the paddle inward until it is flush against the back of the steering wheel.



Step 6:

Slide the pin through the mounting holes on the bottom side of the paddle and push it in as far as it will go.



INSTALLING THE NEW PADDLE SHIFTERS

Step 7:

Using the pick or needle-nose pliers, push the pin the rest of the way in until it clicks into place.



Step 8:

Following the same procedure, install the second paddle shifter then check to ensure proper installation and functionality.

Congratulations, your installation is complete!



SCHWABEN - BUILD THE ULTIMATE TOOL COLLECTION

At ECS Tuning, we carry a line of high quality Schwaben Tools and Equipment to help you build your ultimate tool collection. Never before has affordability and quality been so closely related. Our entire Schwaben line is subjected to strict in house testing for strength and durability. See what we have to offer and equip your garage without breaking the bank.

Your ECS Tuning Paddle Shifter installation is complete!



These instructions are provided as a courtesy by ECS Tuning

Proper service and repair procedures are vital to the safe, reliable operation of all motor vehicles as well as the personal safety of those performing the repairs. Standard safety procedures and precautions (including use of safety goggles and proper tools and equipment) should be followed at all times to eliminate the possibility of personal injury or improper service which could damage the vehicle or compromise its safety.

Although this material has been prepared with the intent to provide reliable information, no warranty (express or implied) is made as to its accuracy or completeness. Neither is any liability assumed for loss or damage resulting from reliance on this material. SPECIFICALLY, NO WARRANTY OF MERCHANTABILITY, FITNESS FOR A PARTICULAR PURPOSE OR ANY OTHER WARRANTY IS MADE OR TO BE IMPLIED WITH RESPECT TO THIS MATERIAL. In no event will ECS Tuning, Incorporated or its affiliates be liable for any damages, direct or indirect, consequential or compensatory, arising out of the use of this material.