



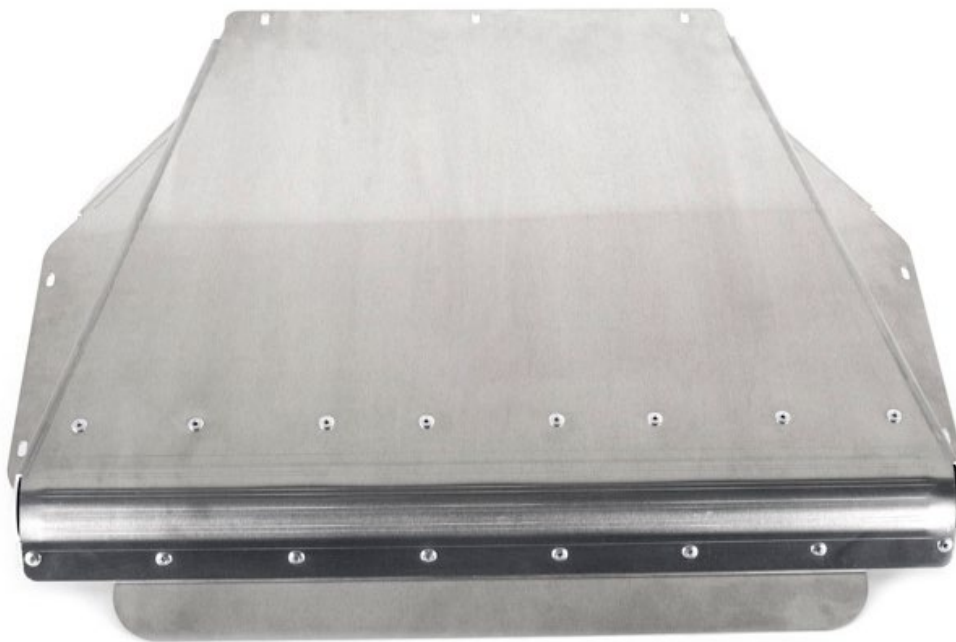
## BMW E46 M3 Aluminum Skid Plate Installation Instructions

Introducing the new Turner E46 M3 Skid Plate! The Turner engineering team has designed a replacement for the stock plastic belly pan which requires no major modification to the vehicle, and offers some serious protection for the bottom of your M3! This skid plate is the *ultimate* upgrade for your stock insulation panel, providing you with the peace of mind knowing the underside of your vehicle is equipped with the ultimate protection against damage and debris.

Our heavy duty aluminum skid plate features a stunning milled finish and a durable mounting system which bolts right to stock mounting points in the vehicle chassis.

Installation is a breeze and we've included everything you need to make this a fast and easy upgrade.

**Installation time:** ½ hour



**These installation instructions have been broken up into two sections:**

**1) Removing the OEM Insulation Panel**

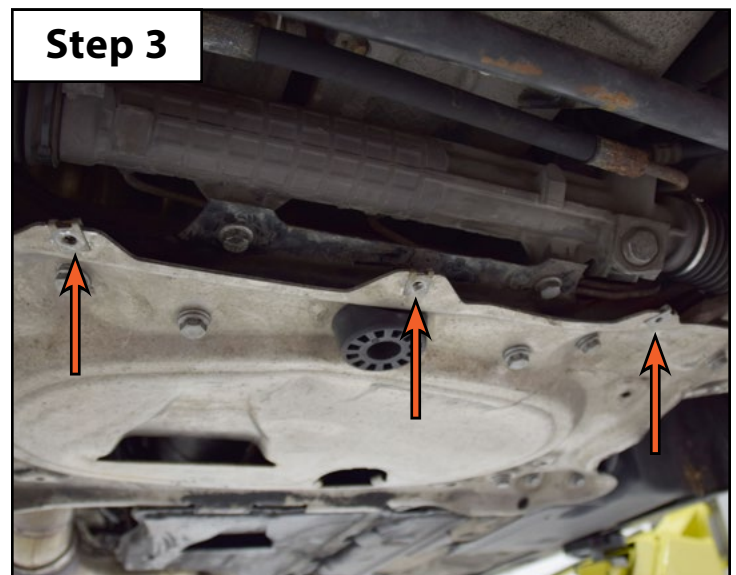
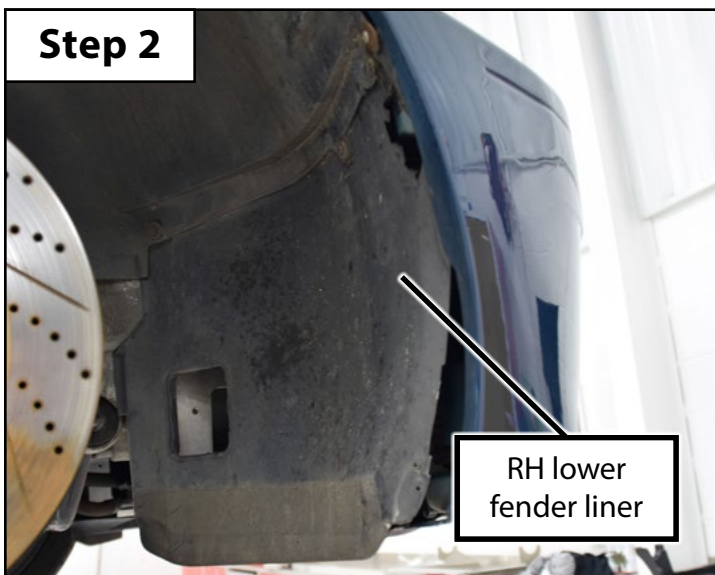
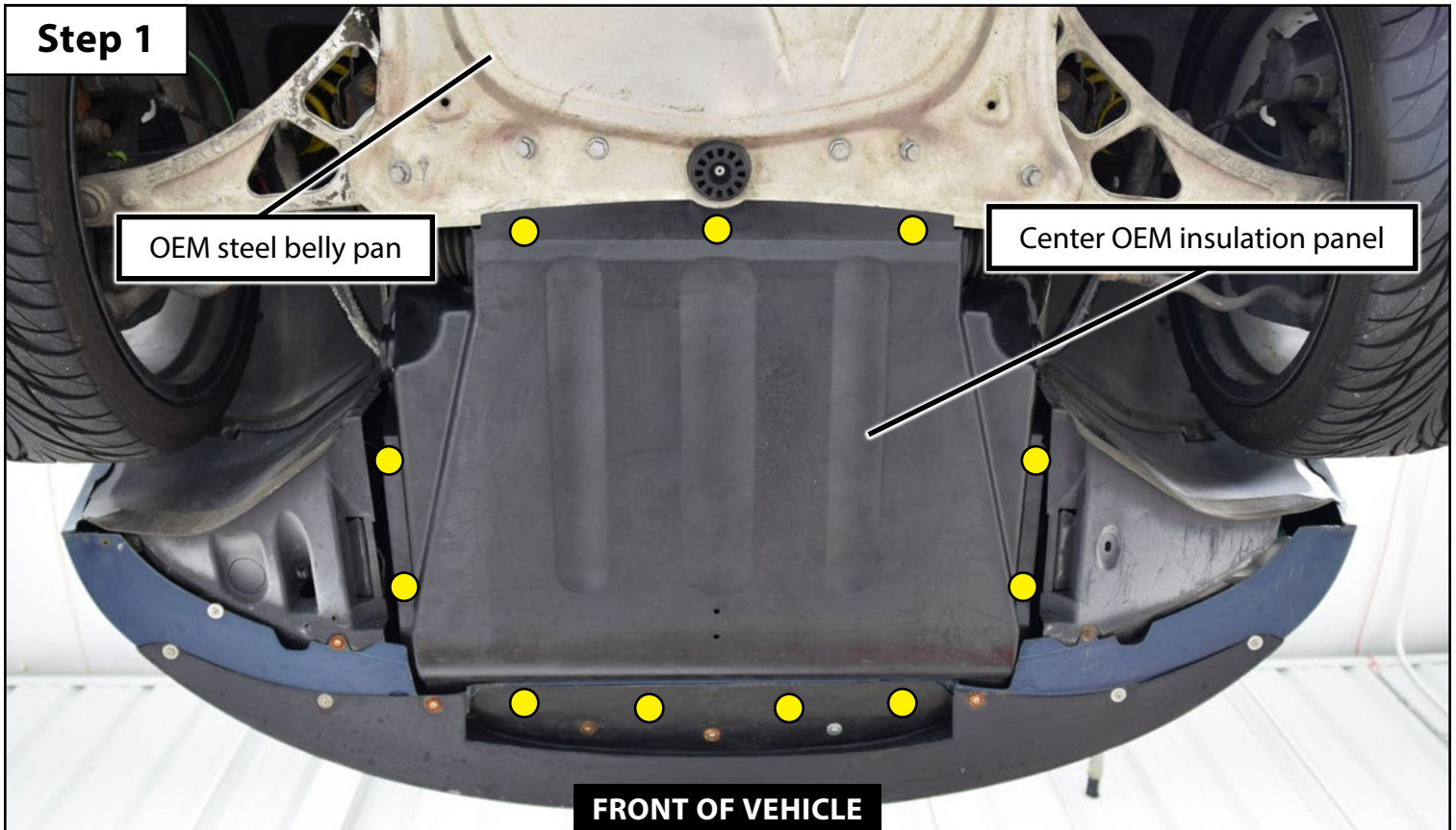
[\(Page 2\)](#)

**2) Installing the New Skid Plate Kit**

[\(Page 3\)](#)

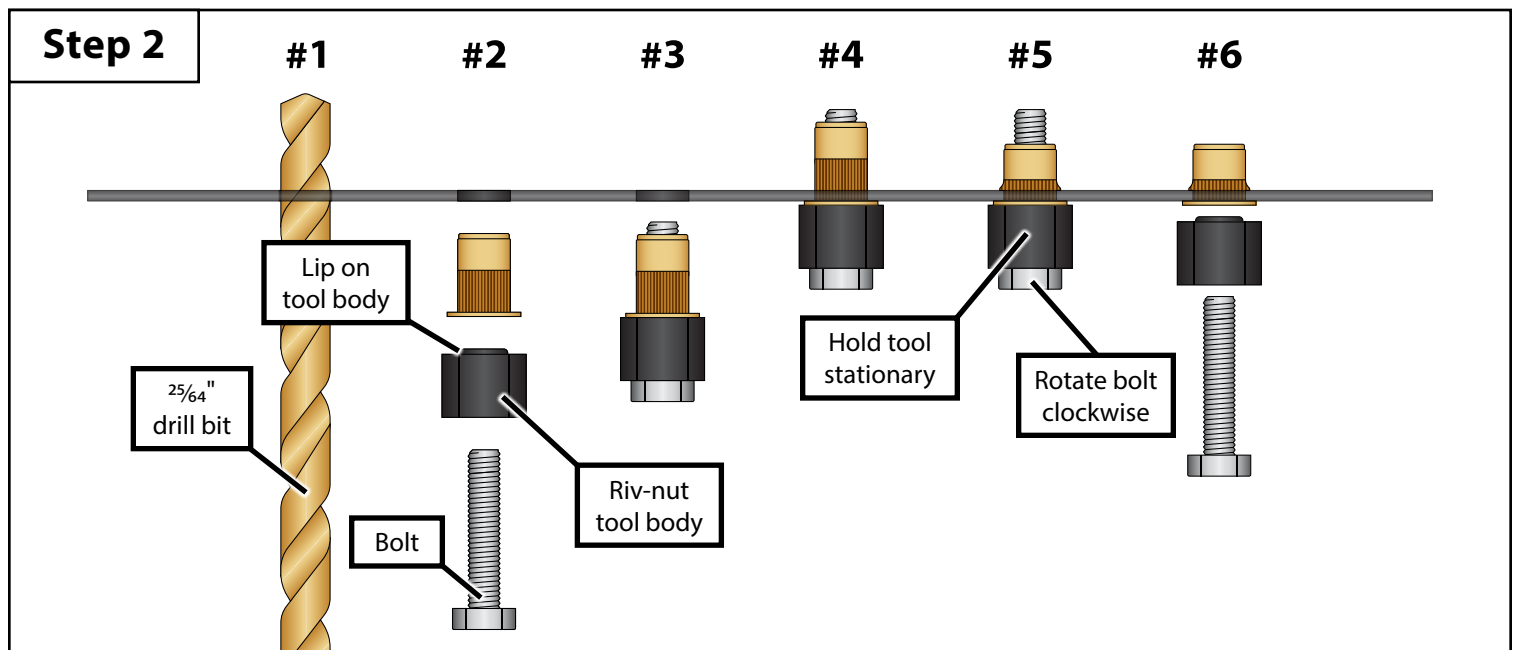
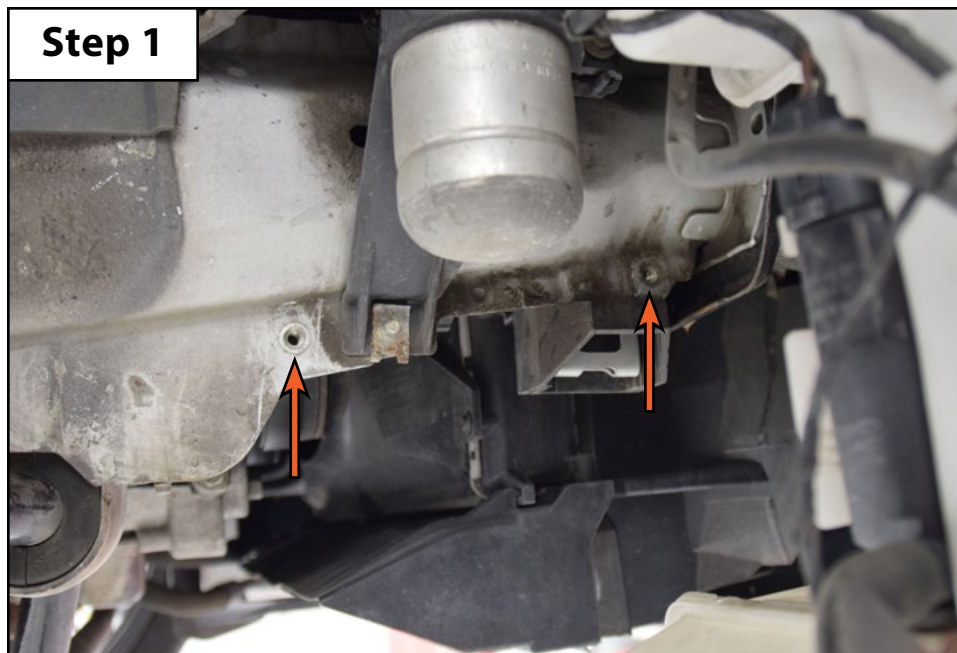
## Section 1: Removing the OEM Insulation Panel

- Step 1**
- Remove all of the screws from the center OEM insulation panel (highlighted in yellow below).
  - Remove the center OEM insulation panel from the vehicle.
- Step 2**
- Remove the LH & RH lower fender liners.
- Step 3**
- Replace the three speed clips which are located on the OEM steel belly pan with the new M6 clip nuts which are supplied in the kit.



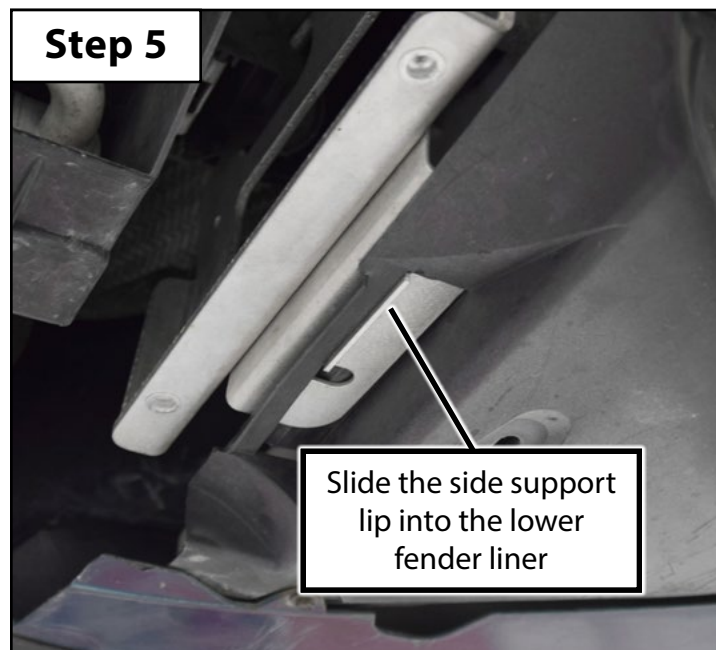
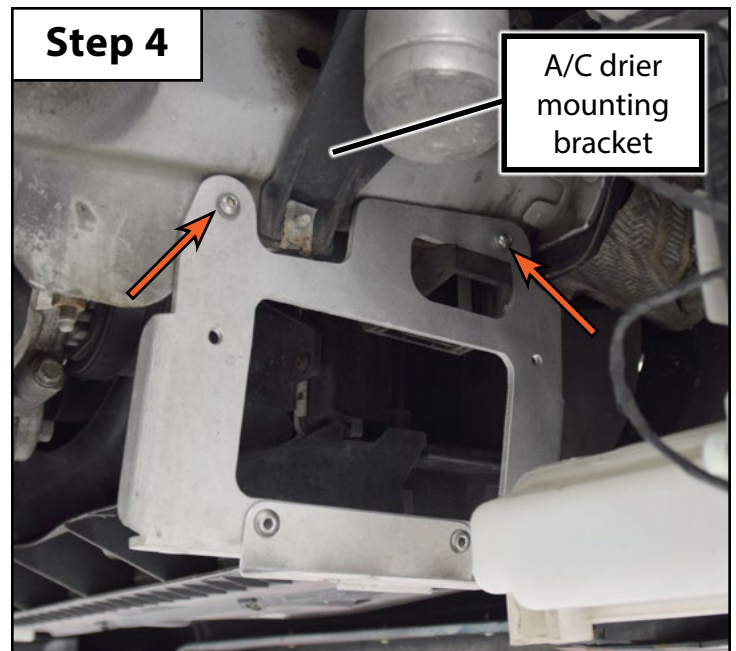
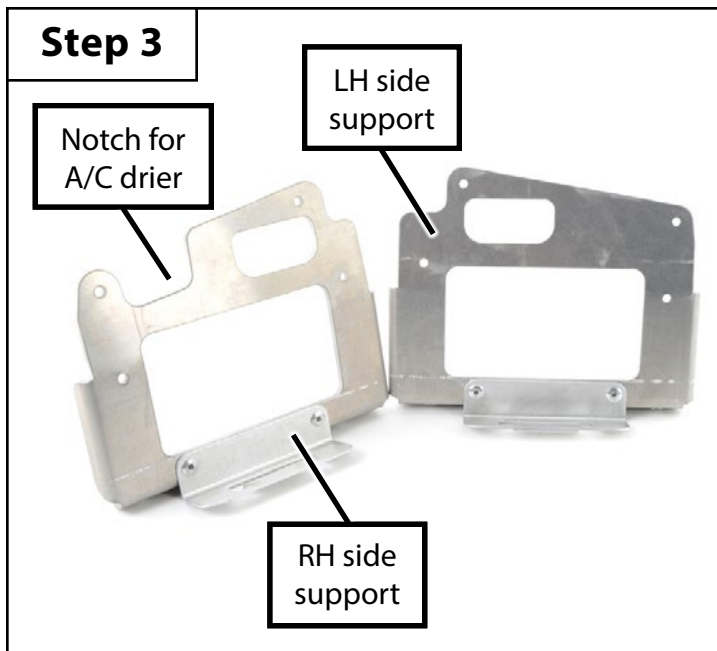
## Section 2: Installing the New Skid Plate Kit

- Step 1**
- Locate the mounting holes behind the lower fender liners, this is where we will be installing the mounting brackets for the skid plate.
- Step 2**
- Prepare the mounting hole by drilling it out using a  $\frac{25}{64}$ " drill bit (#1).
  - Align the lip on the riv-nut tool body with the flanged side of the riv-nut (#2), then thread the bolt through the tool body and into the riv-nut by hand until it is fully seated (#3).
  - Insert the riv-nut into the mounting hole as identified in step 1, making sure that it is flush (#4).
  - While holding the tool body stationary with a wrench, rotate the bolt clockwise to expand the riv-nut (#5).
  - Torque the bolt to 15 Nm (11 Ft-Lbs), then remove it and repeat this procedure to install the other riv-nuts (#6).
  - Repeat this procedure to install all four riv-nuts into the mounting holes on the vehicle.
    - Our riv-nut installation tool can be found on our website by clicking [HERE](#).



## Section 2: Installing the New Skid Plate Kit

- Step 3**
- Note the differences between the LH and RH side supports, the RH features a large cut out along the top edge which provides clearance for the A/C drier mounting bracket (shown in step 4).
- Step 4**
- Install the two side supports into the vehicle using the supplied M6x16mm screws (RH shown in photo).
- Step 5**
- Reinstall the two lower fender liners. Slide the lip on the bottom of the side support into the slot in the fender liner as shown in the step 5 photo below, ensuring that the lip is fully seated into place.



## Section 2: Installing the New Skid Plate Kit

- Step 6**
- Using the photo below for reference, install the center skid plate panel loosely into place.
    - M6x16mm Screws = Yellow ● (QTY 11)
  - Adjust the skid plate as needed for proper fitment, then hand tighten all of the fasteners.

