



BMW E9x M3 Skid Plate Installation Instructions

Introducing the new Turner E9x M3 Skid Plate! The Turner engineering team set out to design a no-compromise belly pan replacement which requires no modification to the vehicle, and offers some serious protection for the bottom of your M3! The finished product was this; the *ultimate* upgrade for your belly pan replacement woes, all for nearly the same cost as the plastic OEM replacement.

Our heavy duty steel skid plate features a durable black powder coat finish, along with a high-strength mounting system which bolts right up to existing mounting points in the vehicle chassis.

Installation of the kit can be done easily in a driveway if needed, and we've included everything you need to make this a fast and easy upgrade.

Installation time: ½ hour



These installation instructions have been broken up into two sections:

1) Removing the OEM Insulation Panels

[\(Page 2\)](#)

2) Installing the New Skid Plate Kit

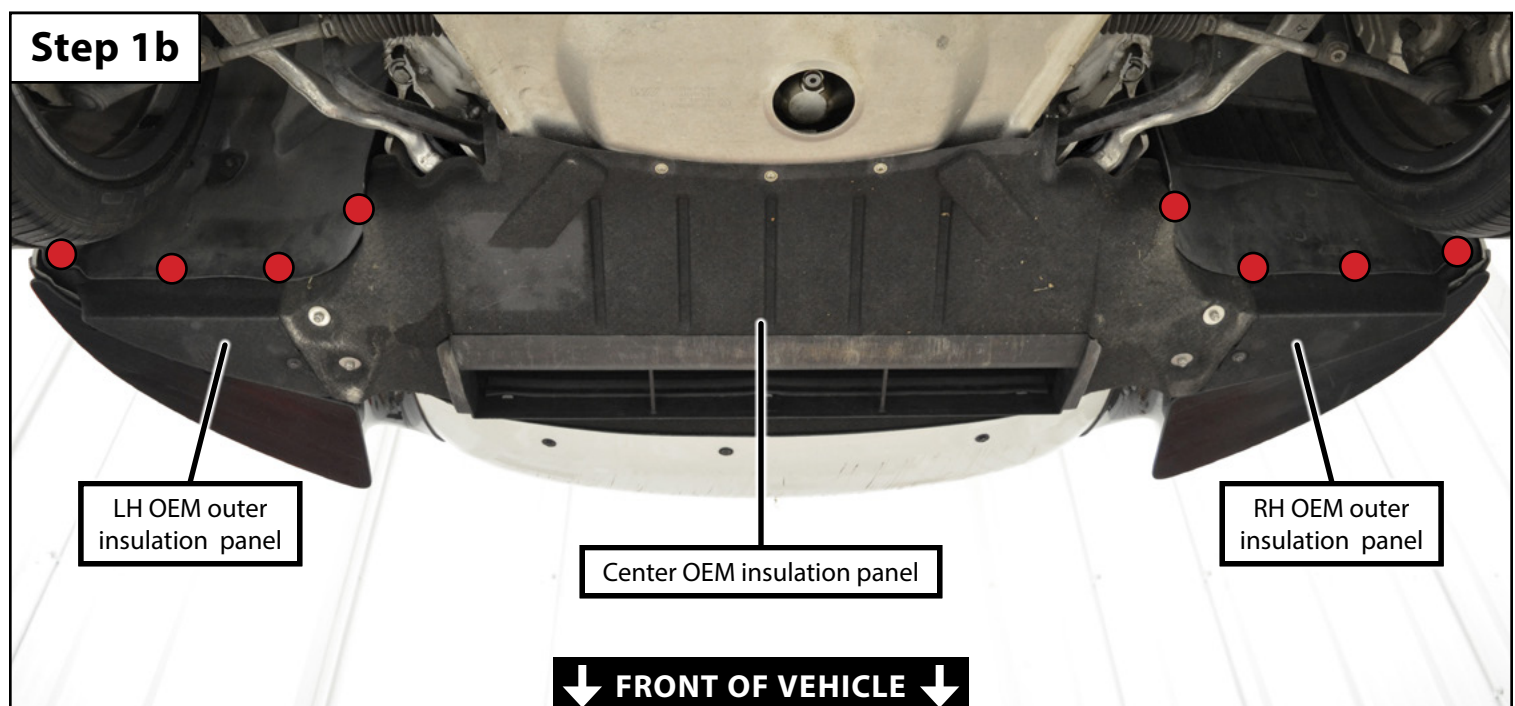
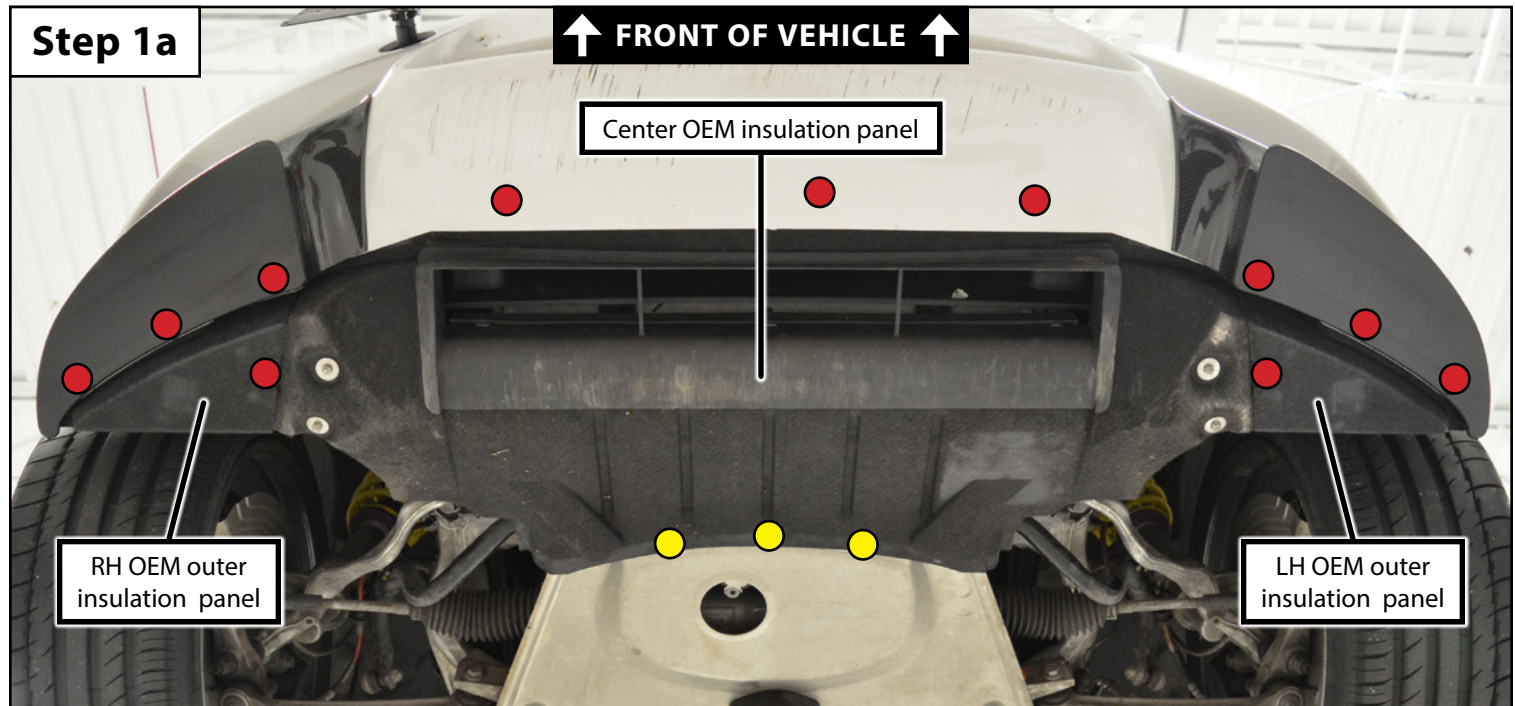
[\(Page 4\)](#)

Proper service and repair procedures are vital to the safe, reliable operation of all motor vehicles as well as the personal safety of those performing the repairs. Standard safety procedures and precautions (including use of safety goggles and proper tools and equipment) should be followed at all times to eliminate the possibility of personal injury or improper service which could damage the vehicle or compromise its safety.

Section 1: Removing the OEM Insulation Panels

Step 1

- Remove all nineteen of the 8mm screws which are highlighted in the photos below in red. ●
- Remove the three 4mm hex (allen) screws which are highlighted in the photo below in yellow. ●
 - Do not attempt to loosen or remove the 10mm hex nuts which protrude from the center insulation panel, these secure the center insulation panel support cables and cannot be removed.
- Leave the center insulation panel hanging in place while you remove the two outer insulation panels.
 - These outer panels come out easily by pulling them downward and toward the center of the vehicle.



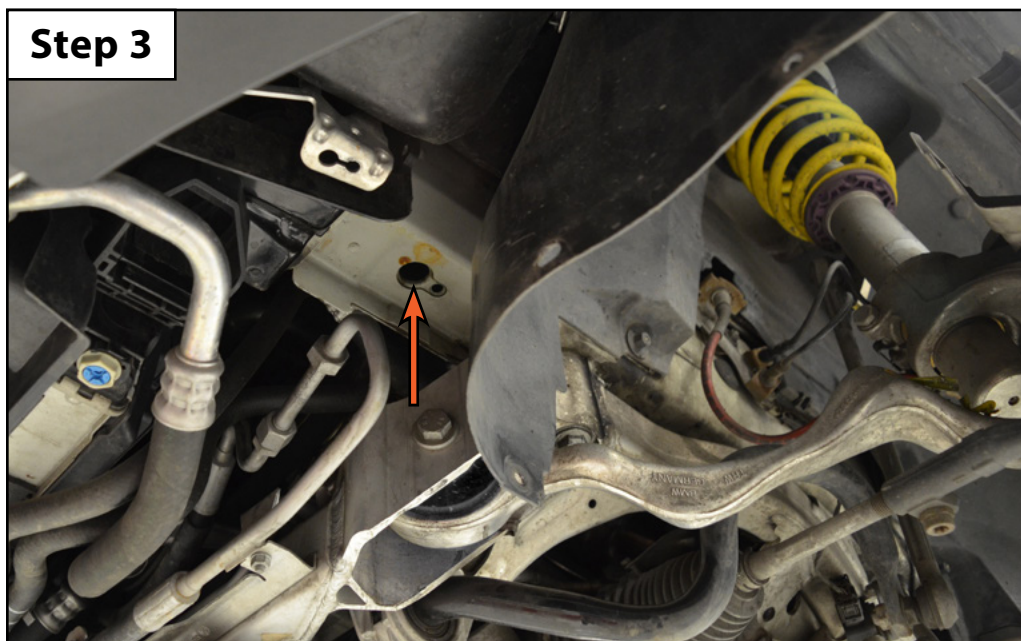
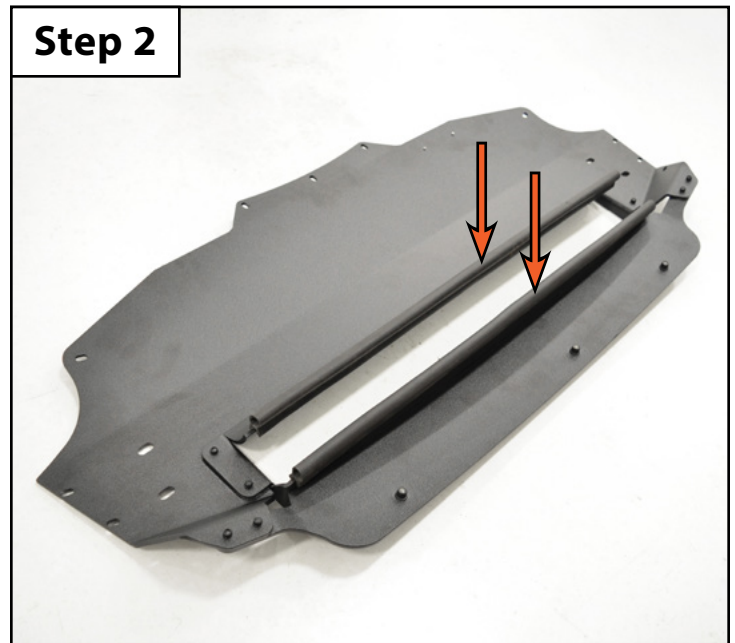
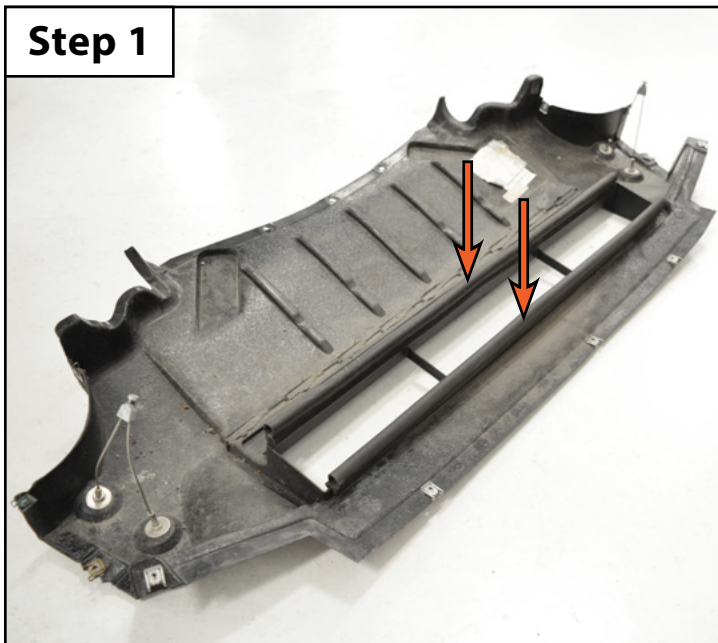
Section 1: Removing the OEM Insulation Panels

- Step 2**
- Release the LH center insulation panel support cable from the chassis bracket.
 - Rotate the cable anchor 90° in either direction.
- Step 3**
- Slide the anchor toward the front of the vehicle, then pull it downward and out of the chassis bracket.
 - Repeat this process to release the RH support cable from the chassis bracket.
- Step 4**
- Remove the center insulation panel from the vehicle.



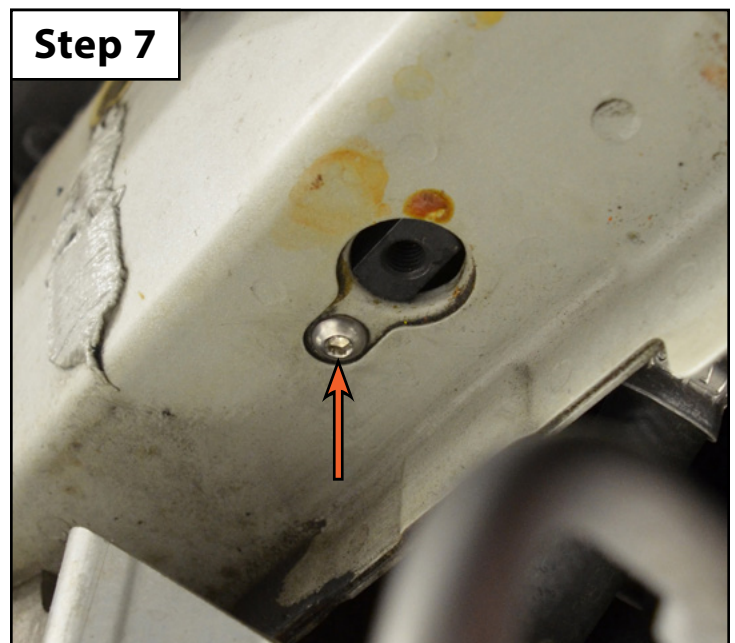
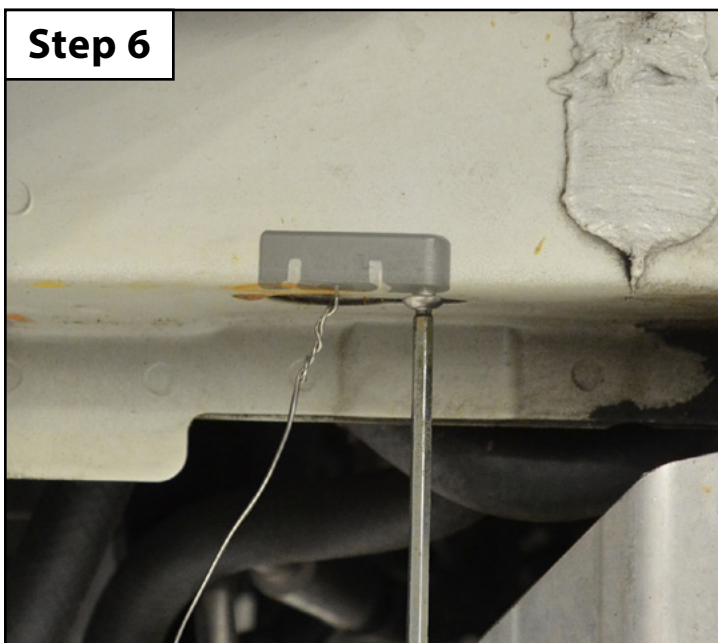
Section 2: Installing the New Skid Plate Kit

- Step 1** • Remove the two bulb seals from the OEM center insulation panel.
- Step 2** • Install the two bulb seals onto the new center skid plate.
- Step 3** • Locate and identify the hole in the LH side of the chassis which is shown in the Step 3 photo below.
- The skid plate kit includes two frame nuts which are designed to be installed in these chassis holes (one of each side).
- Proceed to step 4 for the installation procedure.



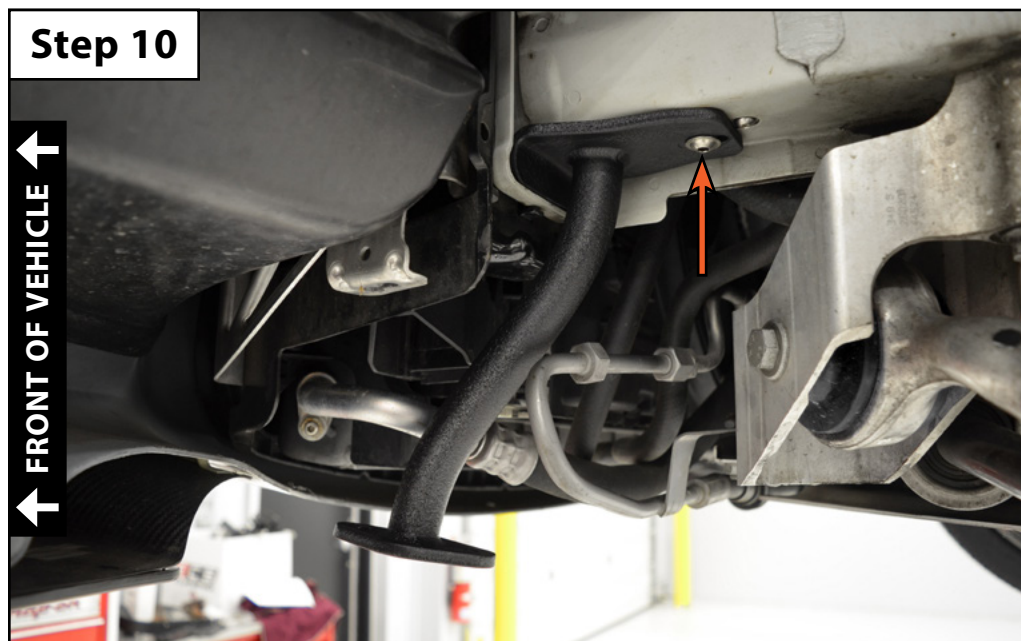
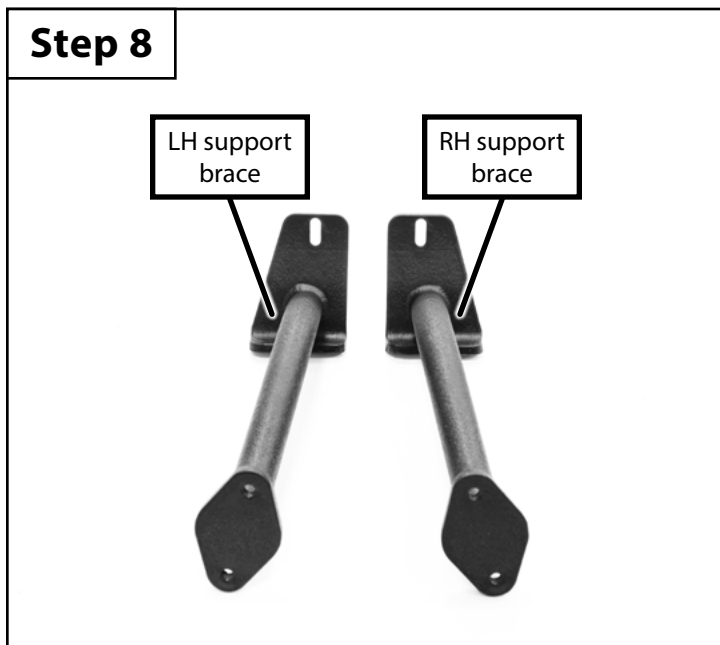
Section 2: Installing the New Skid Plate Kit

- Step 4**
- Prep the frame nut for install by securing a length of safety wire or string through the center hole.
 - This is to help guide the frame nut into place, and also to retrieve it if it is dropped during install.
- Step 5**
- Slide the frame nut through the LH chassis hole as shown.
 - Ensure that the rounded end of the frame nut is inserted first, this end contains the M6 threads which will be used to secure the frame nut to the chassis.
- Step 6**
- Apply a single drop of blue loctite to the M6x10mm screw (optional).
 - Line up the screw with the rearmost threads in the frame nut and tighten it to 8 Nm (6 Ft-lbs).
- Step 7**
- Repeat this process to install the other frame nut into the RH chassis hole.
 - Remove the wire or string used to secure the frame nut.



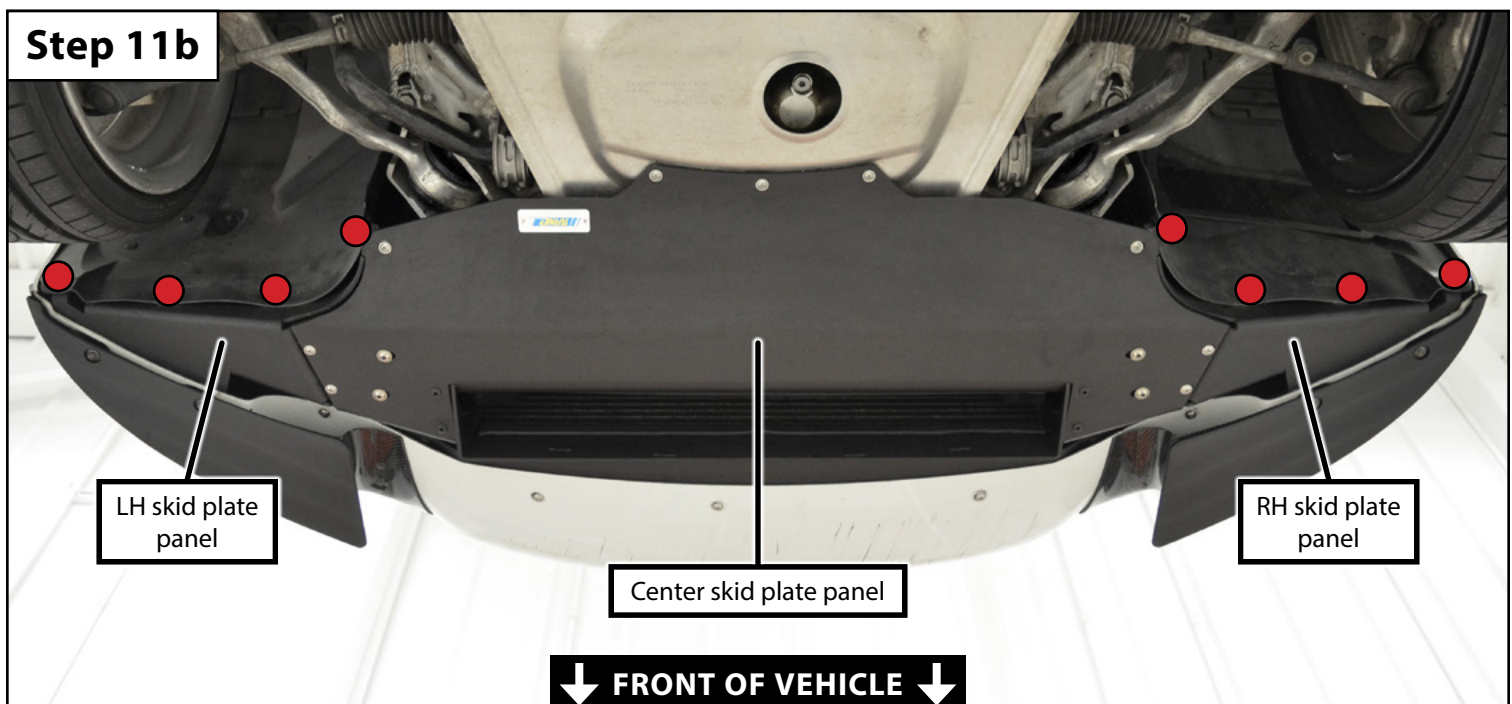
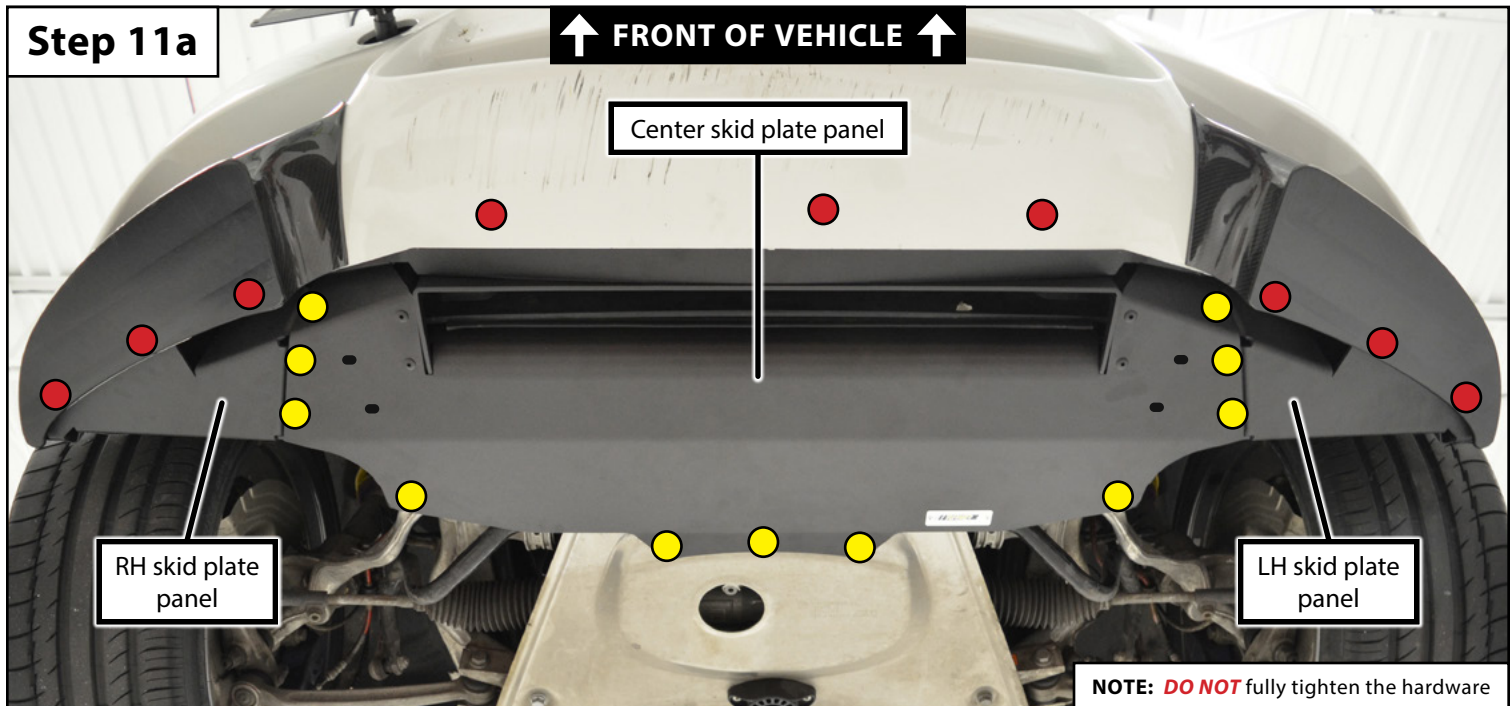
Section 2: Installing the New Skid Plate Kit

- Step 8**
- Use the Step 8 photo below to identify the LH support brace from the RH support brace.
 - These braces are side specific and will only fit one way.
- Step 9**
- Slide the LH support brace into position in the chassis as shown.
 - if you have trouble getting the brace to slide into position you may need to clean out some debris from inside this cavity.
- Step 10**
- Thread one of the M8x25mm screws through the LH support brace and into the threads in the frame nut, **but leave it loose for now.**
 - This will allow us to adjust the fitment later on.
 - Repeat this process to install the RH support brace.



Section 2: Installing the New Skid Plate Kit

- Step 11**
- Using the two photos below for reference, **LOOSELY** install the LH and RH skid plate panels, then **LOOSELY** install the center skid plate panel into place. Don't tighten the screws down, we'll need them loose to fine-tune the fitment. Since we don't need to install all of the screws yet, we would suggest installing:
 - M6x16mm screws = Red ● (QTY 17)
 - M6x20mm screws = Yellow ● (QTY 11)
 - Proceed to the next page for adjustment.



Section 2: Installing the New Skid Plate Kit

- Step 12**
- Slide the support brackets forward or rearward as needed to provide clearance for surrounding components.
 - In some cases you may need to adjust these brackets to get the bolts to line up through the skid plate.
 - Thread in the remaining M8 screws through the center skid plate panel into the support brackets by hand.
 - M8x25mm screws = Green ● (QTY 4)
 - Adjust the skid plates as needed for proper fitment.
 - Torque the support bracket bolts to 15 Nm (11 Ft-lbs).
 - Hand tighten all remaining fasteners.

