

VW MK7 Luft-Technik Inlet Air Scoop Kit Installation Instructions - [Click HERE to Shop](#)

Skill Level 2 - Moderate

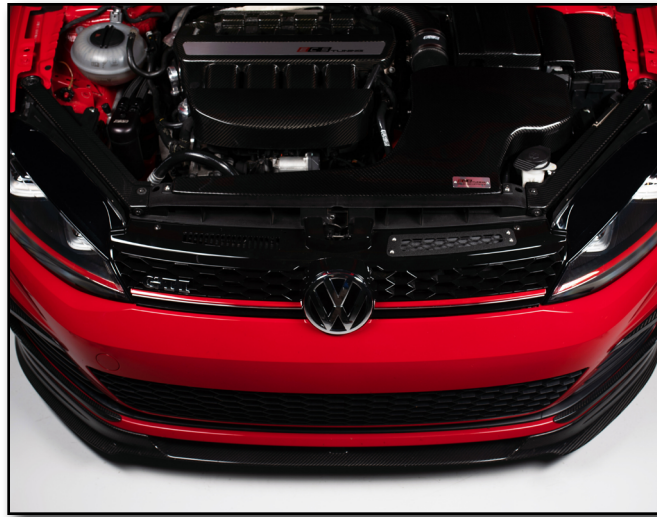
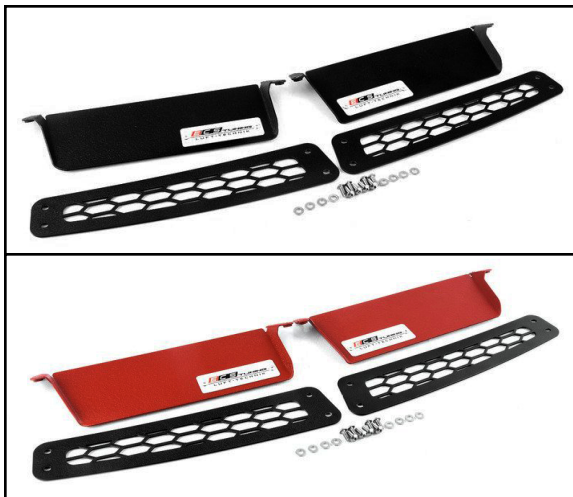


TABLE OF CONTENTS

Required Tools and Equipment.....[pg.3](#)
Installation and Safety Information.....[pg.4](#)
Project Overview.....[pg.5](#)
Installing the Inlet Air Scoops.....[pg.6](#)

AVAILABLE KITS



Dual Inlet Scoop (LH and RH sides)
Available in **RED** or **BLACK**



Single Inlet Scoop (LH side only)
Available in **RED** or **BLACK**



Single Inlet Scoop (RH side only)
Available in **RED** or **BLACK**

REQUIRED TOOLS

Note: The tools required for each step will be listed by the step number throughout these instructions.

Standard Automotive Tools

- Protecta-Sockets (for lug nuts)..... [ES#2221243](#)
- 3/8" Drive Ratchet..... [ES#2765902](#)
- 3/8" Drive Torque Wrench..... [ES#2221245](#)
- 3/8" Drive Deep and Shallow Sockets..... [ES#2763772](#)
- 3/8" Drive Extensions [ES#2804822](#)
- Hydraulic Floor Jack [ES#240941](#)
- **Torx Drivers and Sockets** [ES#11417/8](#)
- 1/2" Drive Deep and Shallow Sockets..... [ES#2839106](#)
- 1/2" Drive Ratchet
- 1/2" Drive Extensions
- 1/2" Drive Torque Wrench..... [ES#2221244](#)
- 1/2" Drive Breaker Bar [ES#2776653](#)
- Bench Mounted Vise
- Crows Foot Wrenches
- **Hook and Pick Tool Set**..... [ES#2778980](#)

Required For This Install

- 1/4" Drive Ratchet..... [ES#2823235](#)
- 1/4" Drive Deep and Shallow Sockets [ES#2823235](#)
- 1/4" Drive Extensions [ES#2823235](#)
- Plier and Cutter Set..... [ES#2804496](#)
- Flat and Phillips Screwdrivers [ES#2225921](#)
- Jack Stands..... [ES#2763355](#)
- Ball Pein Hammers
- Pry Bar Set..... [ES#1899378](#)
- **Electric/Cordless Drill**
- Wire Strippers/Crimpers
- **Drill Bits**
- Punch and Chisel Set
- **Hex Bit (Allen) Wrenches and Sockets** [ES#11420](#)
- Thread Repair Tools [ES#1306824](#)
- Open/Boxed End Wrench Set [ES#2765907](#)

Available On Our Website

Specialty Tools

- **Cut-off Wheel/Dremel/Hack Saw**
- **File/Sandpaper**

INSTALLATION NOTES

- **RH** refers to the *passenger side* of the vehicle.
- **LH** refers to the *driver side* of the vehicle.
- Always use the proper torque specifications.
- If applicable to this installation, torque specifications will be listed throughout the document and at the end as well.
- Please read all of these instructions and familiarize yourself with the complete process **BEFORE** you begin.

GENERAL PREPARATION AND SAFETY INFORMATION

ECS Tuning cares about your health and safety, please read the following safety information. This information pertains to automotive service in general, and while it may not pertain to every job you do, please remember and share these important safety tips.

- Park your car in a safe, well lit, level area.
- Shut the engine off and remove the key from the ignition switch.
- Make sure any remote start devices are properly disabled.
- **ALWAYS** wear safety glasses.
- Make sure the parking brake is applied until the vehicle is safely lifted and supported.
- Whether lifting a vehicle using an automotive lift or a hydraulic jack, be sure and utilize the factory specified lift points.
- Lifting a vehicle in an incorrect location can cause damage to the suspension/running gear.
- **ALWAYS** support the vehicle with jack stands.
- **ALWAYS** read and follow all safety information and warnings for the equipment you are using.



NEVER get underneath a vehicle that is supported only by a jack, and **ALWAYS** make sure that the vehicle is securely supported on jack stands.

PROJECT OVERVIEW

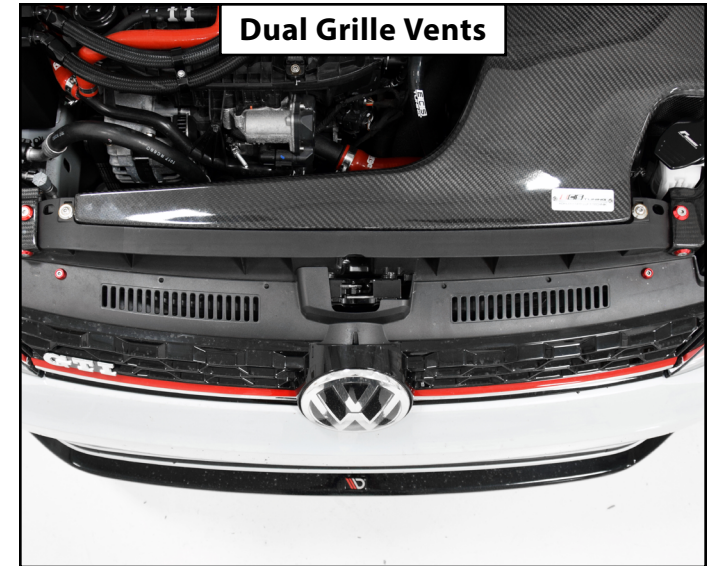
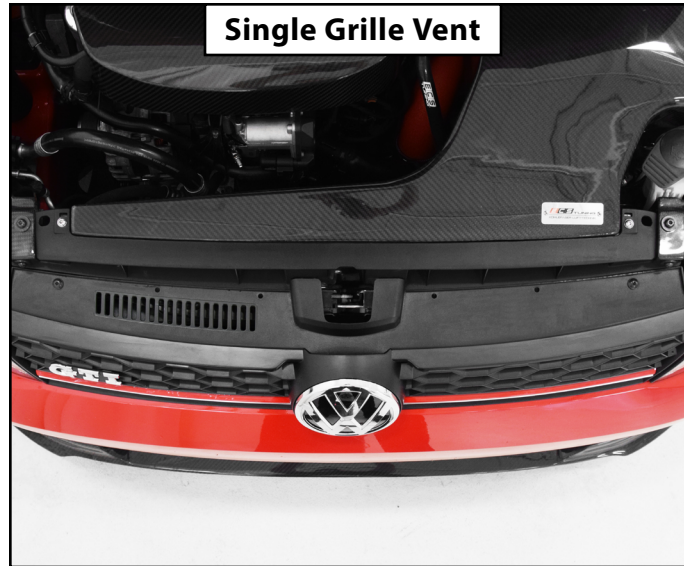
The stock grille styling varies based on your specific model. Different style grilles require slightly different installation procedures. On some grilles you may need to cut an opening in your grille to allow the air to flow into the intake.

If your grille features a single vent you may want to consider installing both inlet scoops and the included trim plates to create sleek symmetrical finish.

If your grille features dual vents you have the option of not modifying them at all. You could simply install the inlet scoop without the trim plates, preserving your OEM style vents.

Each kit comes with the scoop and trim plate, as well as a detailed vinyl cutting template to help take the guesswork out of the cutting process! Today we will be installing both inlet scoops on our MK7 GTI.

Now let's get started!



INSTALLING THE INLET AIR SCOOPS

Step 1: T25 Torx

Start by removing the two screws attaching the front grille to the core support.



Step 2:

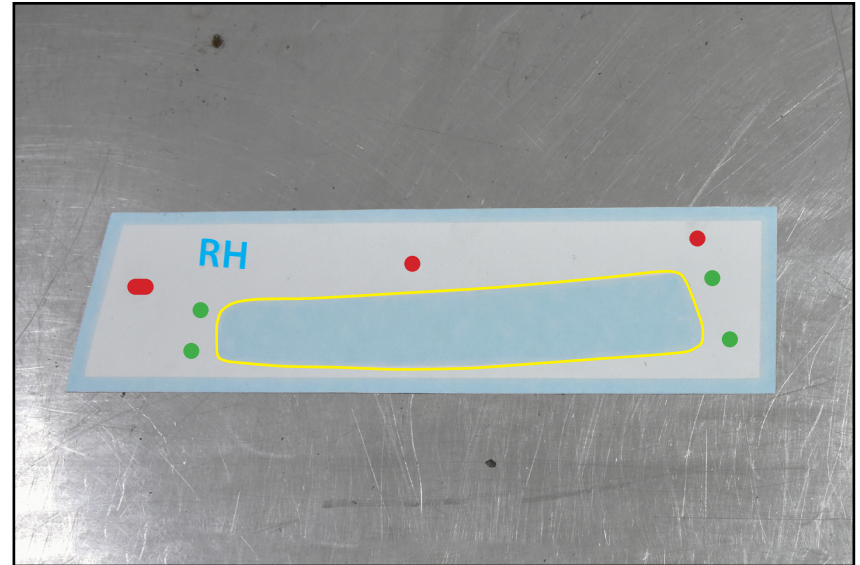
To remove the grille from the bumper, first lift straight up to pop it free from the bottom, then pull forward to slide the grille out from the core support and free from the vehicle. Set the grille aside on a suitable work surface.



INSTALLING THE INLET AIR SCOOPS

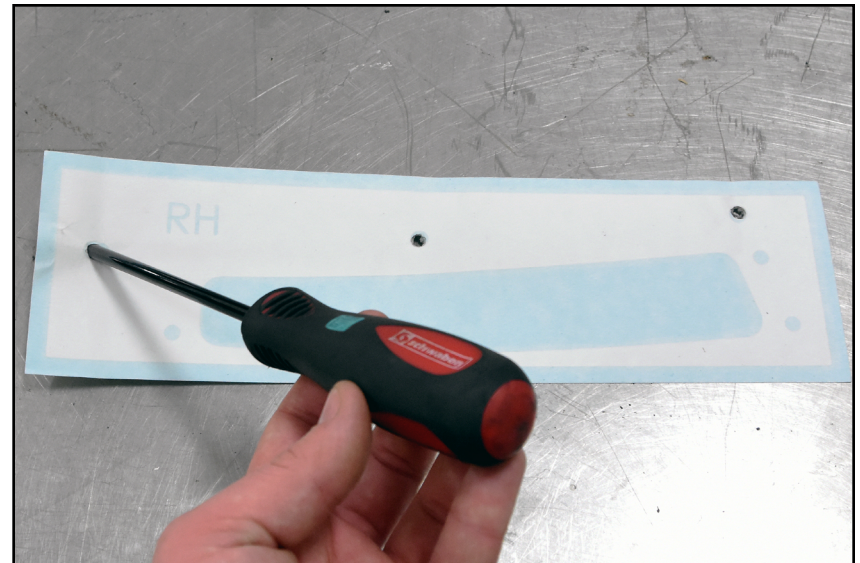
Step 3:

Let's take a quick look at the cutting template. Each cutting template is labeled for the left-hand (LH) or right-hand (RH) side (highlighted in **BLUE**). Each template has three locating holes (highlighted in **RED**) which align with the holes on the top of the grille. The large opening in the center (highlighted in **YELLOW**) outlines the area which we will be cutting out to allow the air to flow into the intake. Each template also features four holes (highlighted in **GREEN**) which we will be drilling out for the air scoop mounting screws.



Step 4: Awl -or- Hole Punch

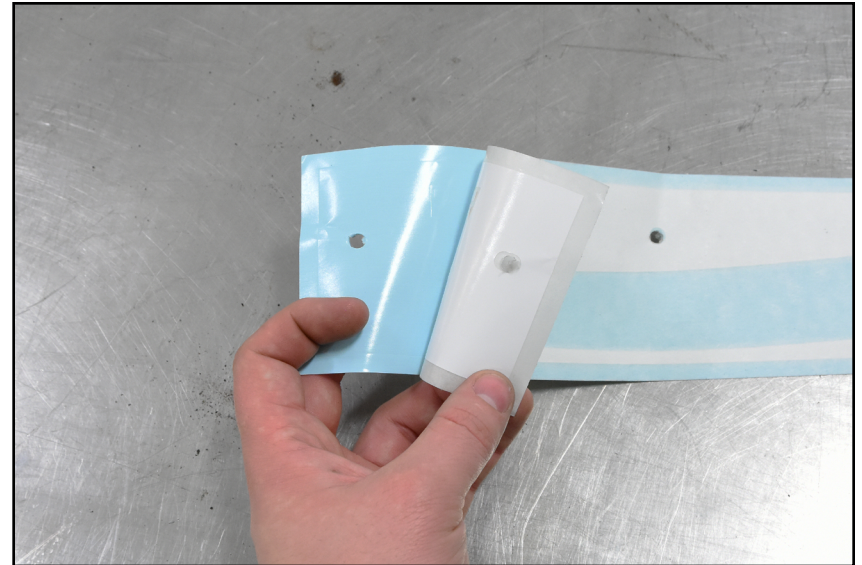
Using an awl or other suitable tool, pierce the three locating holes to make them easier to line up with the matching holes in the grille assembly.



INSTALLING THE INLET AIR SCOOPS

Step 5:

Peel the blue backing paper off of the cutting template.

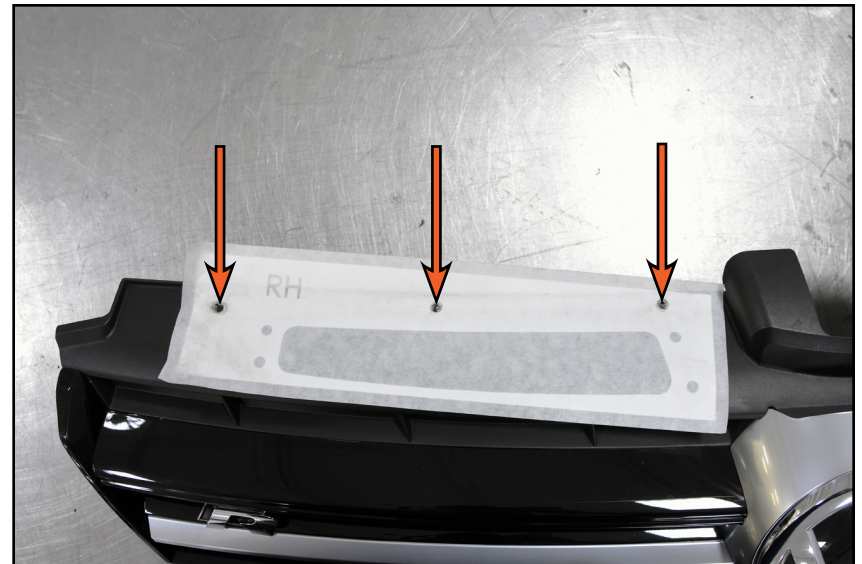


Step 6:

Line up the three locating holes of the cutting template with the matching holes along the top of the grille assembly, then carefully adhere the template into place.



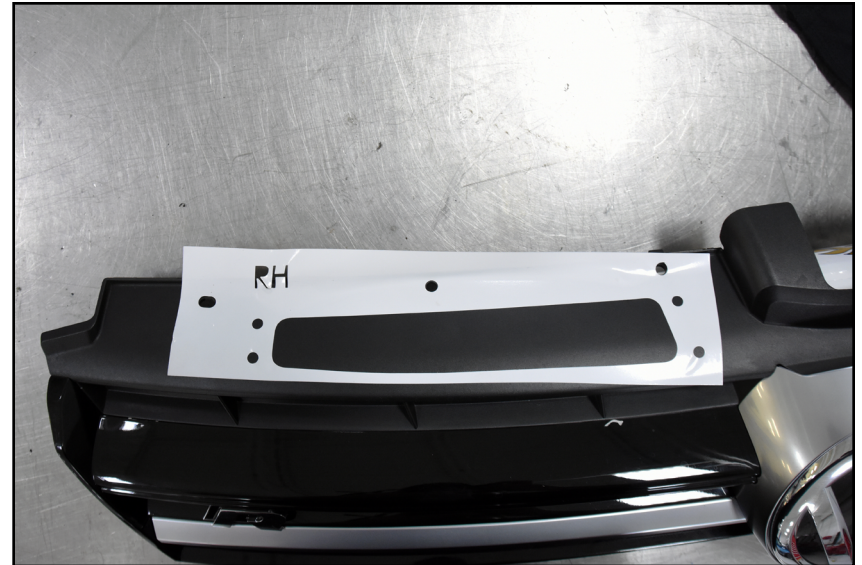
The top of the cutting template will extend past the top of the grille assembly, and the large opening overlaps the stock vents slightly. Don't worry, this is intentional. As long as the three mounting holes are perfectly aligned, the template should be properly positioned.



INSTALLING THE INLET AIR SCOOPS

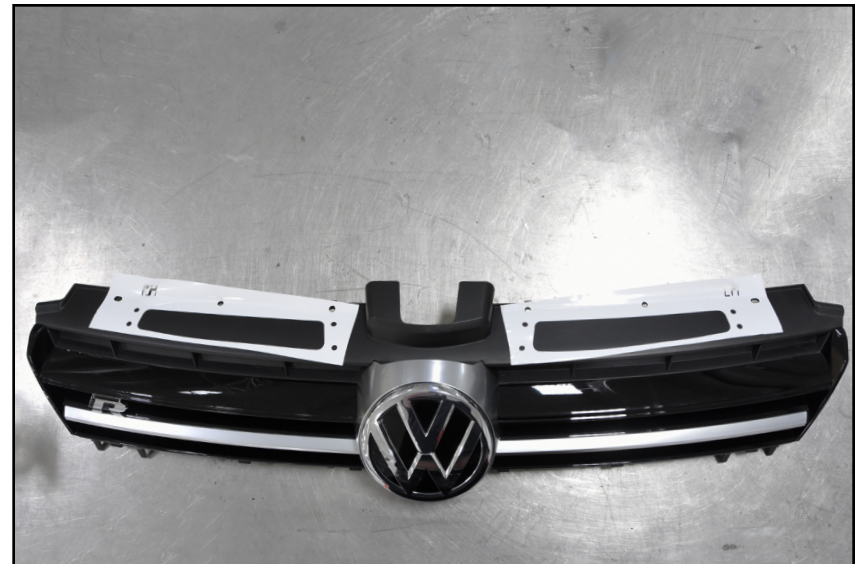
Step 7:

Slowly and carefully remove the translucent white tape from the cutting template. The goal here is to leave the cutting template exactly where it is, so be careful not to pull any of the template off while removing the tape.



Step 8:

Repeat this procedure for the other side of the grille.



INSTALLING THE INLET AIR SCOOPS

Step 9: Electric Drill & $\frac{7}{32}$ " Drill Bit

Carefully drill the four mounting holes using the template as your guide.



Step 10: File

Clean up any burrs or rough edges from the new mounting holes.



INSTALLING THE INLET AIR SCOOPS

Step 11: Cut-off Wheel, Dremel or Hack Saw

Using a cut-off wheel, dremel, hack saw or other suitable cutting tool, cut out the inner section using the template as your guide.



Step 12: File or Sandpaper

Once you have made your cut, peel the cutting template off and use a file or sandpaper to clean up any remaining burrs or rough edges.



INSTALLING THE INLET AIR SCOOPS

Step 13: 2.5mm Allen Wrench

Place the inlet scoop underneath the grille, then place the cover plate on top, sandwiching the grille between the two. Next, install the four screws and washers down through the cover plate and into the threaded holes on the inlet scoop.



Step 14: 2.5mm Allen Wrench

Tighten down each of the four fasteners, then repeat the process to install the inlet scoop on the other side.



INSTALLING THE INLET AIR SCOOPS

Step 15:

Reinstall the grille by sliding it inward so that the lip slides into the core support, then pushing downward to snap the grille into the bumper.



Step 16: T25 Torx

Reinstall the two screws along the top of the grill.



Congratulations, your installation is complete!

Your Luft-Technik Inlet Air Scoop installation is complete!



These instructions are provided as a courtesy by ECS Tuning

Proper service and repair procedures are vital to the safe, reliable operation of all motor vehicles as well as the personal safety of those performing the repairs. Standard safety procedures and precautions (including use of safety goggles and proper tools and equipment) should be followed at all times to eliminate the possibility of personal injury or improper service which could damage the vehicle or compromise its safety.

Although this material has been prepared with the intent to provide reliable information, no warranty (express or implied) is made as to its accuracy or completeness. Neither is any liability assumed for loss or damage resulting from reliance on this material. SPECIFICALLY, NO WARRANTY OF MERCHANTABILITY, FITNESS FOR A PARTICULAR PURPOSE OR ANY OTHER WARRANTY IS MADE OR TO BE IMPLIED WITH RESPECT TO THIS MATERIAL. In no event will ECS Tuning, Incorporated or its affiliates be liable for any damages, direct or indirect, consequential or compensatory, arising out of the use of this material.