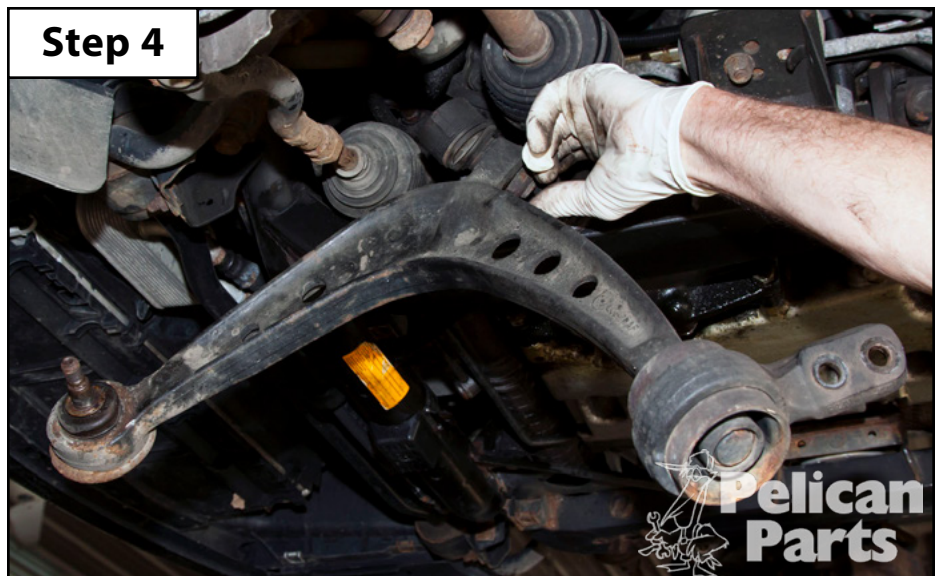
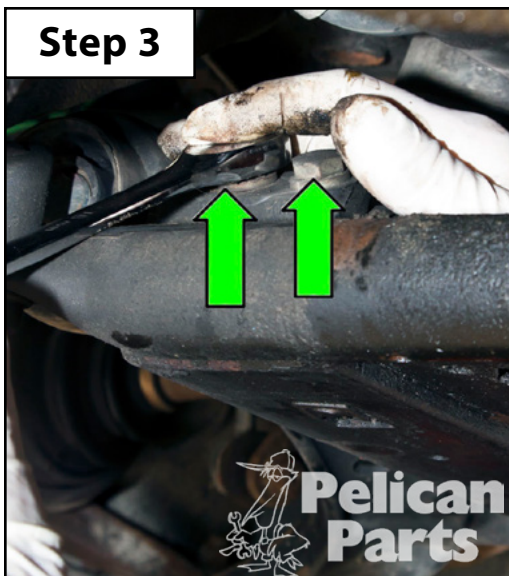
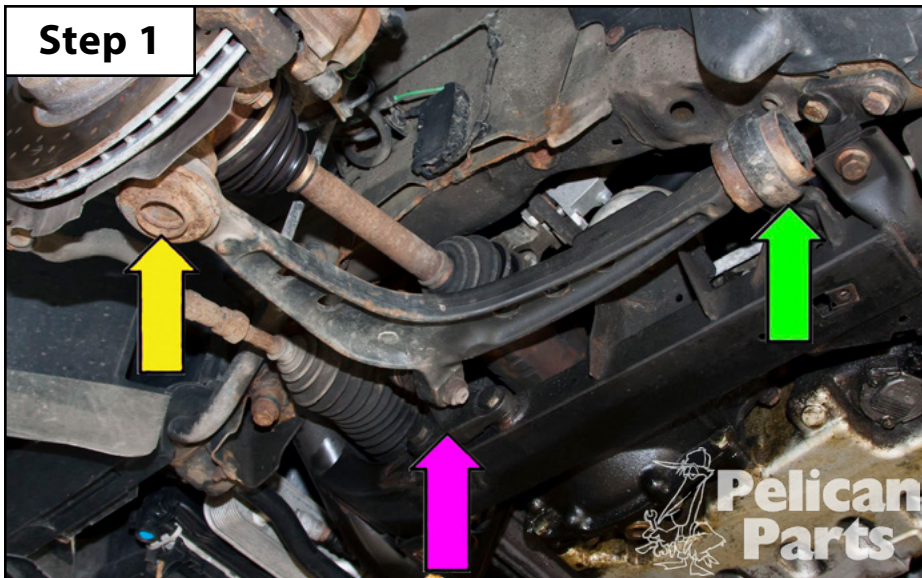


Section 1: FCAB Housing Removal & Disassembly

- Step 1**
- Safely lift and support the vehicle.
 - Remove the front wheels.
 - Remove the headlight height sensor from the lower control arm (if equipped).
 - We're going to disconnect the lower control arm from two points; the lower ball joint at the steering knuckle (**YELLOW** arrow in **Step 1 photo**), and the FCAB from the subframe (**GREEN** arrow in **Step 1 photo**). We will **NOT** be disconnecting the inner ball joint from the subframe (**PURPLE** arrow in **Step 1 photo**).
- Step 2**
- Remove the 16mm lower ball joint nut (**GREEN** arrow in **Step 2 photo**).
 - Separate the ball joint from the steering knuckle (not shown).
- Step 3**
- Remove the two 16mm bolts from the FCAB housing (**GREEN** arrows in **Step 3 photo**).
 - Separate the ball joint from the steering knuckle (not shown).
- Step 4**
- Swing the lower control arm down (**Step 4 photo**).
 - Pull the FCAB off of the control arm (not shown).



Thank you to [Pelican Parts](#) for providing these images to us!

Section 1: FCAB Housing Removal & Disassembly

- Step 5**
- Take a moment and familiarize yourself with the FCAB housings and how they must be oriented.
 - Each housing should be stamped with an "L" or "R" to indicate which side they belong on (highlighted in **GREEN** in the **Step 5a & Step 5b** illustrations below), **but they are backwards due to the way these brackets are installed onto the AWD "xi" models.**
 - Safely support the FCAB housing from below while you press the stock bushing out (**Step 5c** illustration).

This FCAB may be stamped "R", but since it will be inverted on the subframe it **MUST** be installed on the **LH side**.

This FCAB may be stamped "L", but since it will be inverted on the subframe it **MUST** be installed on the **RH side**.

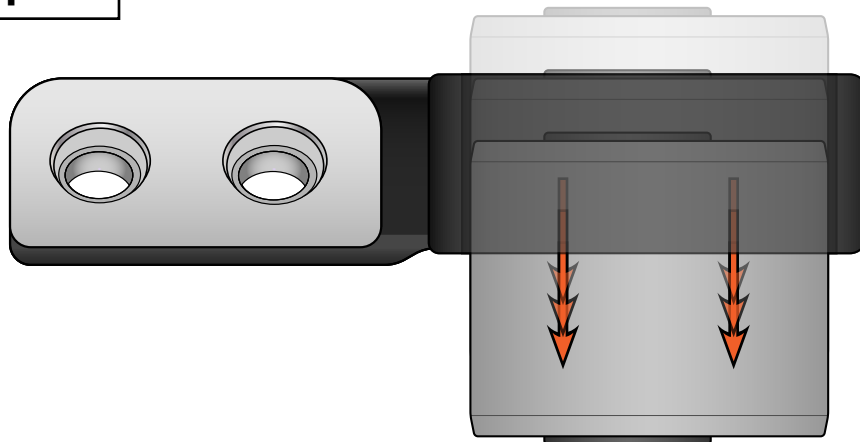
Step 5a



Step 5b



Step 5c



Section 2: Poly FCAB Installation Guidelines

- Step 1**
- Be sure to orient the FCAB housings as outlined in Step 5 on the previous page (**Step 1a photo**).
 - When the FCAB housings are on the press you need to ensure that:
 - The LH/RH letter castings **MUST** face upward.
 - The locating bumps **MUST** face downward (**Step 1b photo**). You may need to grind a relief channel in your support tool to allow for this (**Step 1c photo**).

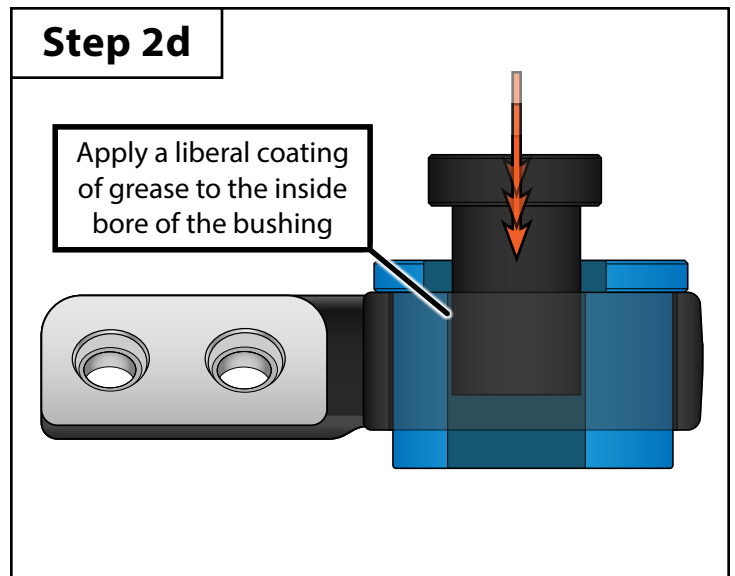
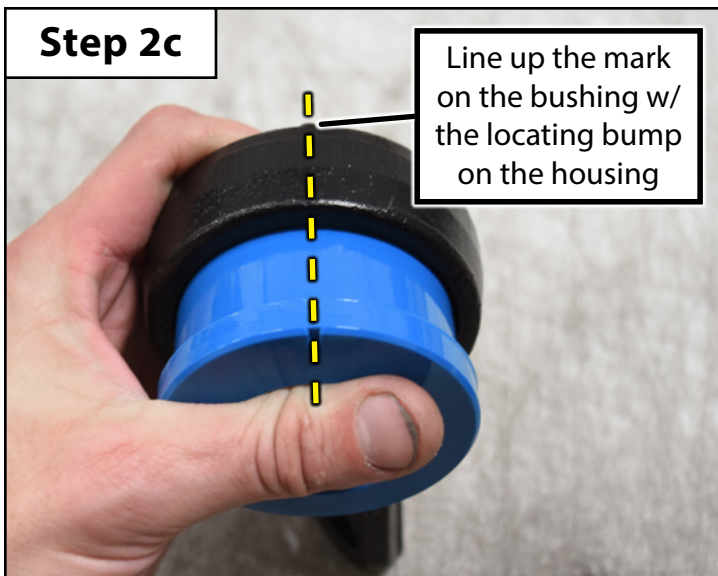
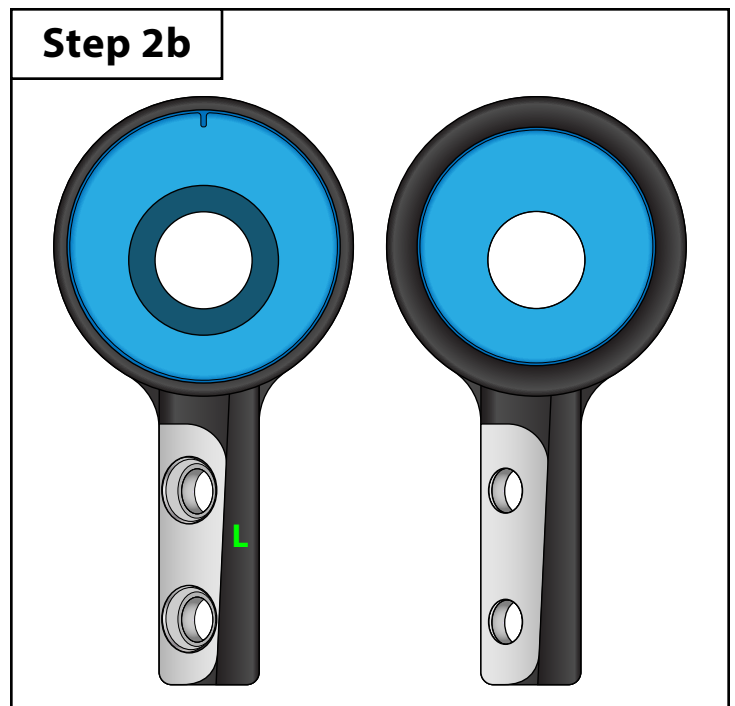
This FCAB may be stamped "L", but since it will be inverted on the subframe it **MUST** be installed on the **RH side**.

This FCAB may be stamped "R", but since it will be inverted on the subframe it **MUST** be installed on the **LH side**.



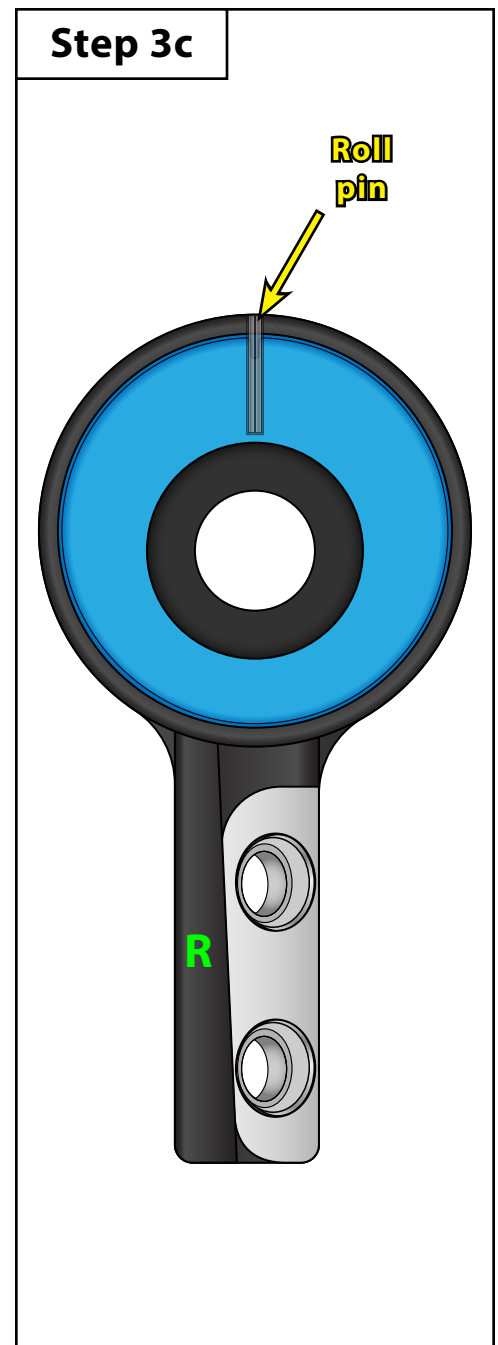
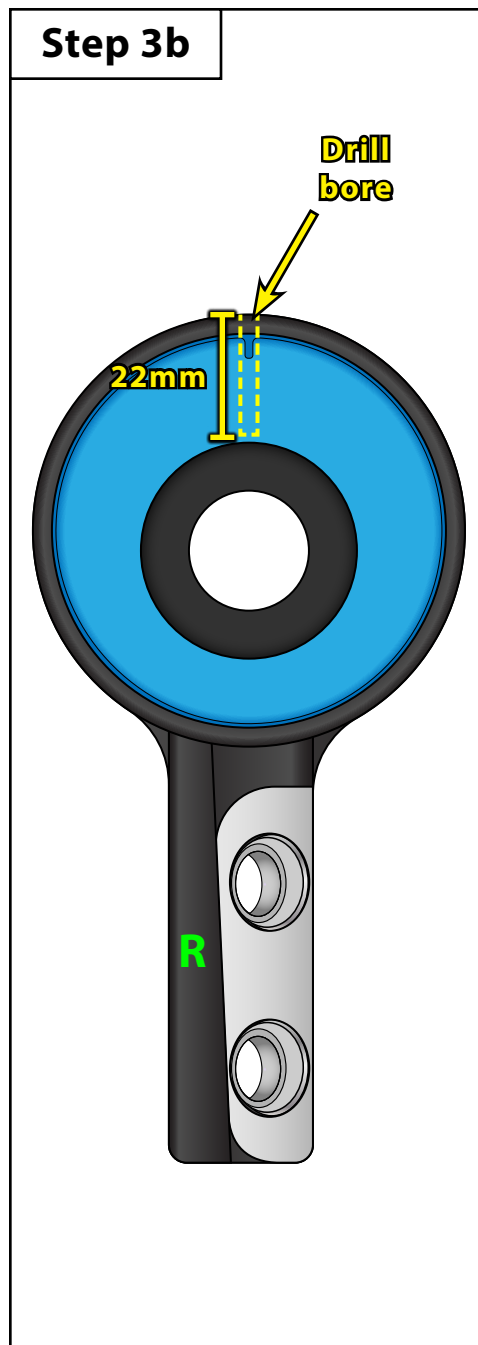
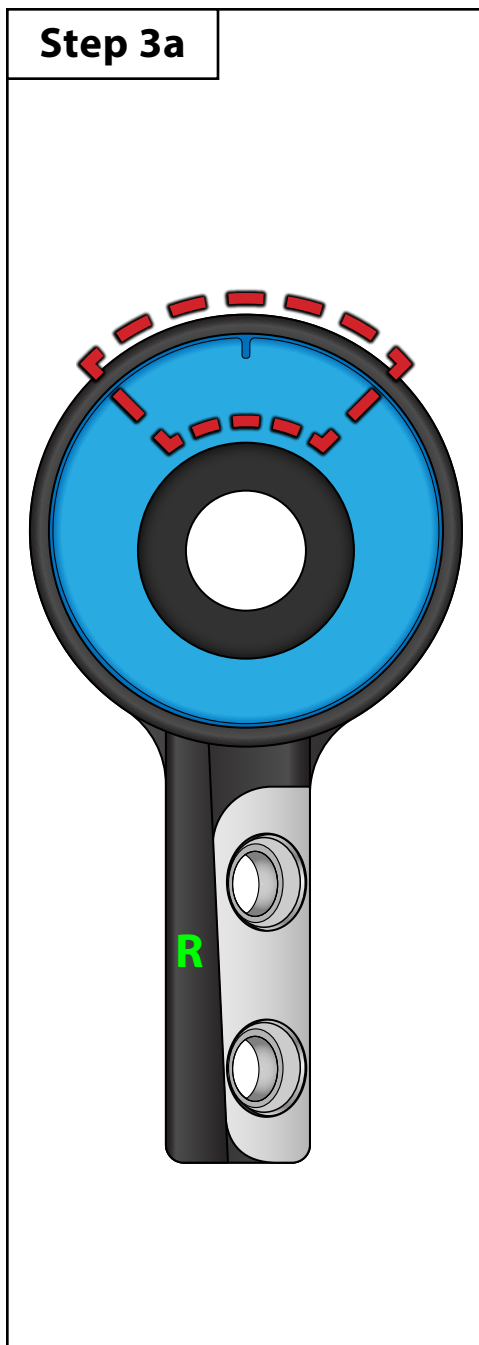
Section 2: Poly FCAB Installation Guidelines

- Step 2**
- Be sure to properly orient the FCAB housings as shown in the (**Step 2a & Step 2b illustrations below**).
 - Push the poly bushing into the FCAB housing until the flange bottoms out (**Step 2c photo**). Be sure to line up the mark on the bushing with the locating bump on the FCAB housing.
 - Apply a liberal coating of the included grease to the inside of the poly bushing.
 - Push the sleeve into the poly bushing until it bottoms out (**Step 2d illustration**).



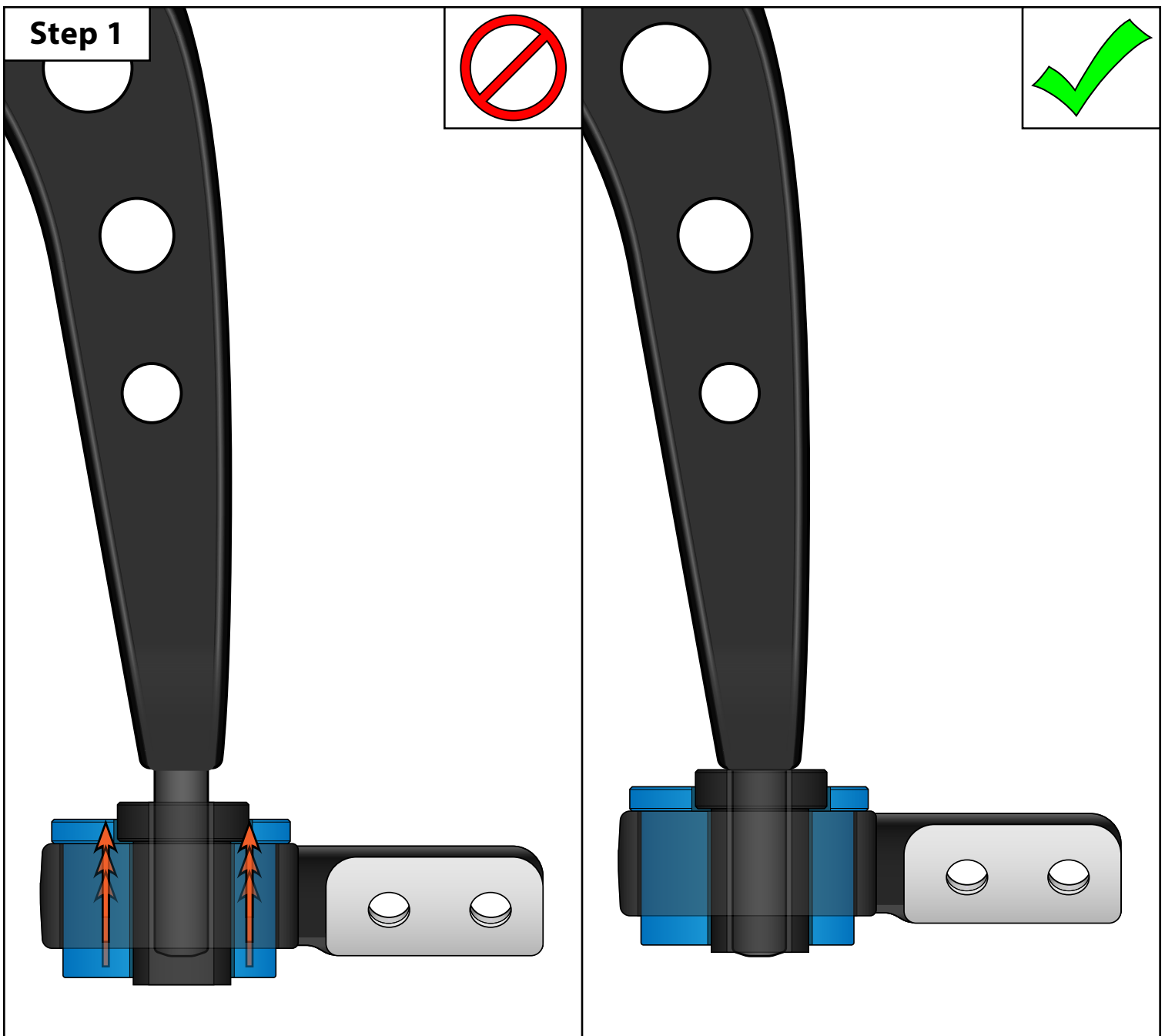
Section 2: Poly FCAB Installation Guidelines

- Step 3**
- We strongly recommend locking your new poly bushings into place with the supplied roll pins. This will prevent the bushings from rotating inside the housing and upsetting the alignment.
 - Ensure that the bushing is fully seated, then clamp the bracket in a bench vise.
 - The hole must be drilled at the very top of the bracket, otherwise it may contact the bushing sleeve (**RED** highlights in the **Step 3a illustration**).
 - Drill through the housing and into the bushing approximately 22mm using a #12 drill bit. **The end result here is a bore through both the bracket and the bushing, totaling 22mm (7/8") in depth**, any longer and we risk puncturing through the center bore of the bushing. Insert a suitable tool (zip tie, Allen key, etc) into the bore to check the depth as you drill (**Step 3b illustration**).
 - Tap the roll pin into the bore with a hammer until it is flush with outside of the control arm bracket (**Step 3c illustration**).



Section 3: Reassembly

- Step 1**
- Install the FCAB housings onto the lower control arms (**Step 1 illustrations below**). The center sleeve inside the bushing should bottom out against the control arm.
 - **NOTE:** This can usually be done by hand. If you have trouble getting the bushing to slide over the control arm try giving the FCAB a few hits with a soft-face hammer such as a rubber mallet or deadblow hammer to help get things situated. There's no need to swing for the fences here, be careful to not damage the bushings or any nearby components.
 - **NOTE:** You may need to fine-tune the position of the bushing on the control arm later on once you start to bolt everything into place.



Section 3: Reassembly

- Step 2**
- Install the FCAB housings onto the lower control arms (**Step 2 illustration below**). The center sleeve inside the bushing should bottom out against the control arm.
- Step 3**
- Install the FCAB housings onto the lower control arms (**Step 3 illustration below**). The center sleeve inside the bushing should bottom out against the control arm.

