



## BMW N55 Carbon Fiber Open & Closed Intake System Installation Instructions



Proper service and repair procedures are vital to the safe, reliable operation of all motor vehicles as well as the personal safety of those performing the repairs. Standard safety procedures and precautions (including use of safety goggles and proper tools and equipment) should be followed at all times to eliminate the possibility of personal injury or improper service which could damage the vehicle or compromise its safety.

## INTRODUCTION

### The Product:

Our engineers here at Turner Motorsport set out to design an intake system which performs as well as it looks, and these systems are the result. Introducing the Turner Motorsport N55 carbon fiber intake system; the artful culmination of hours of skillful engineering. This intake is available in either an open filter configuration featuring a sturdy powder-coated heat shield or as an enclosed filter carbon fiber airbox system. The heat shield is constructed of sturdy aluminum with an attractive black powder coat finish for durability. Each intake includes a custom fit reflective gold sticker which further assists in keeping intake temperatures down. The intake pipe is truly a work of art, it is constructed of hand-laid carbon fiber with our logo beautifully preserved beneath the durable finish. The systems are available in either a classy and captivating matte finish or in a sleek and attractive high-gloss finish. Today we are going to be installing our intake system into an F30 335i, but keep in mind the installation process is the same regardless of your vehicle series.

### The Installation:

Installation is quick, simple, and completely reversible. We highly recommend reading through these instructions completely first before getting started with your installation. No specialty tools are required for this installation and we include all necessary hardware necessary to install your new intake. In total, this installation should take no longer than one hour.

### The Difference:

With the addition of this intake you will experience a reduction in restriction which means less stress on the turbocharger, lower intake temperatures, and an increase in airflow. The result? An additional 7 HP and 14 ft-lbs of torque at the wheels. That is added power than can be felt across the entire RPM range.

***Thank you for choosing to make Turner Motorsport your primary supplier for your BMW performance and repair needs, we appreciate you!***

## TABLE OF CONTENTS

Kit Contents - Closed Intake System.....	<a href="#">pg.4</a>
Kit Contents - Open Intake System .....	<a href="#">pg.5</a>
Installation and Safety Information .....	<a href="#">pg.6</a>
Removing the Stock Intake.....	<a href="#">pg.7</a>
Installing the New Intake System .....	<a href="#">pg.10</a>

## KIT CONTENTS



Heat Shield



Carbon Intake Pipe



Air Filter



Heat Shield Tape

## KIT CONTENTS - CLOSED INTAKE SYSTEM



Lid Mounting Bracket  
(QTY 1)



Carbon Fiber Lid  
(QTY 1)



Clip Nut  
(QTY 1)



M6x16mm Screw  
(QTY 2)



Standoff Stud and Washer  
(QTY 2)



Thick Rubber Edge Trim  
(QTY 1)



M6x20mm Screw  
(QTY 1)



Push-in grommet  
(QTY 1)



Mounting Grommet  
(QTY 3)



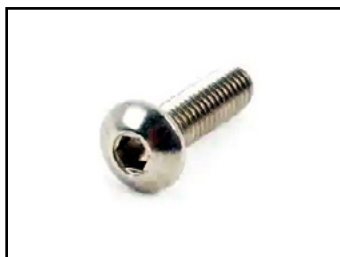
Grommet  
(QTY 1)



Bottom Support  
(QTY 1)



M5x12mm Screw  
(QTY 4)



M4x14mm Screw  
(QTY 2)



Thin Rubber Edge Trim  
(QTY 1)



Washer  
(QTY 4)



## KIT CONTENTS - OPEN INTAKE SYSTEM



Bottom Support  
(QTY 1)



Clip Nut  
(QTY 1)



M6x16mm Screw  
(QTY 2)



Countersunk Washer  
(QTY 2)



Standoff Stud  
(QTY 2)



Bulb Seal  
(QTY 1)



M6x20mm Screw  
(QTY 1)



Push-in Plug  
(QTY 1)



Mounting Grommet  
(QTY 1)



Grommet  
(QTY 1)



Edge Trim  
(QTY 1)



M5x12mm Screw  
(QTY 2)



M4x14mm Screw  
(QTY 2)



Sealing Plug  
(QTY 2)



Washer  
(QTY 2)

## INSTALLATION NOTES

- **RH** refers to the *passenger side* of the vehicle.
- **LH** refers to the *driver side* of the vehicle.
- Always use the proper torque specifications.
- If applicable to this installation, torque specifications will be listed throughout the document and at the end as well.
- Please read all of these instructions and familiarize yourself with the complete process **BEFORE** you begin.

## GENERAL PREPARATION AND SAFETY INFORMATION

Turner Motorsport cares about your health and safety, please read the following safety information. This information pertains to automotive service in general, and while it may not pertain to every job you do, please remember and share these important safety tips.

- Park your car in a safe, well lit, level area.
- Shut the engine off and remove the key from the ignition switch.
- Make sure any remote start devices are properly disabled.
- **ALWAYS** wear safety glasses.
- Make sure the parking brake is applied until the vehicle is safely lifted and supported.
- Whether lifting a vehicle using an automotive lift or a hydraulic jack, be sure and utilize the factory specified lift points.
- Lifting a vehicle in an incorrect location can cause damage to the suspension/running gear.
- **ALWAYS** support the vehicle with jack stands.
- **ALWAYS** read and follow all safety information and warnings for the equipment you are using.



**NEVER** get underneath a vehicle that is supported only by a jack, and **ALWAYS** make sure that the vehicle is securely supported on jack stands.

## REMOVING THE STOCK INTAKE

### Step 1:

Depress the locking tab on the MAF sensor connector (highlighted in **RED**) and pull the connector off of the MAF.



### Step 2:

If equipped, remove the vacuum line (highlighted in **RED**) by pinching the two sides inward and then pulling it off of the flange on the intake pipe.



## REMOVING THE STOCK INTAKE

### Step 3:

Loosen the clamp on the intake pipe.



### Step 4:

Remove the stock intake pipe from the corrugated lower intake tube, then lift up to pop the intake pipe free from the grommet.





## REMOVING THE STOCK INTAKE

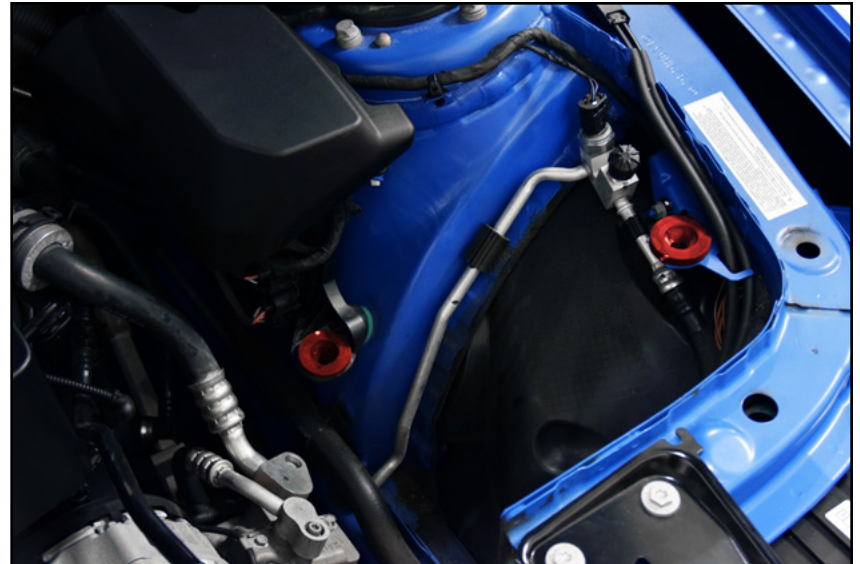
### Step 5:

Lift up to pop the stock air box free from its mounting grommets.



### Step 6:

Remove the stock airbox grommets (highlighted in **RED**).



## INSTALLING THE NEW INTAKE SYSTEM

### Step 1: T15 Torx

Remove the two screws and remove the MAF from the stock intake pipe.



### Step 2: 2.5mm Hex (Allen)

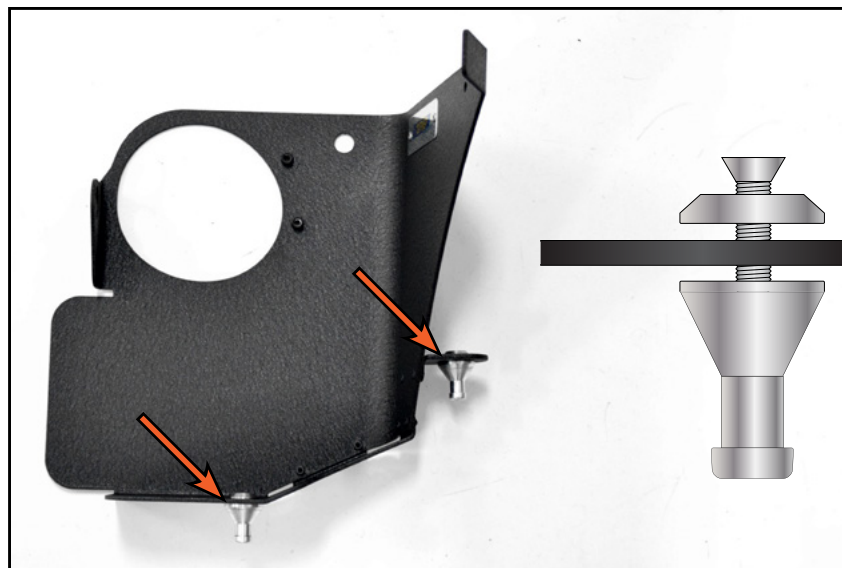
Transfer the MAF to the new intake pipe and secure with the provided M4 screws.



## INSTALLING THE NEW INTAKE SYSTEM

### Step 3: 4mm Hex (Allen)

Install the two standoff studs into the heat shield with the two provided countersunk washers and M6 screws as shown.

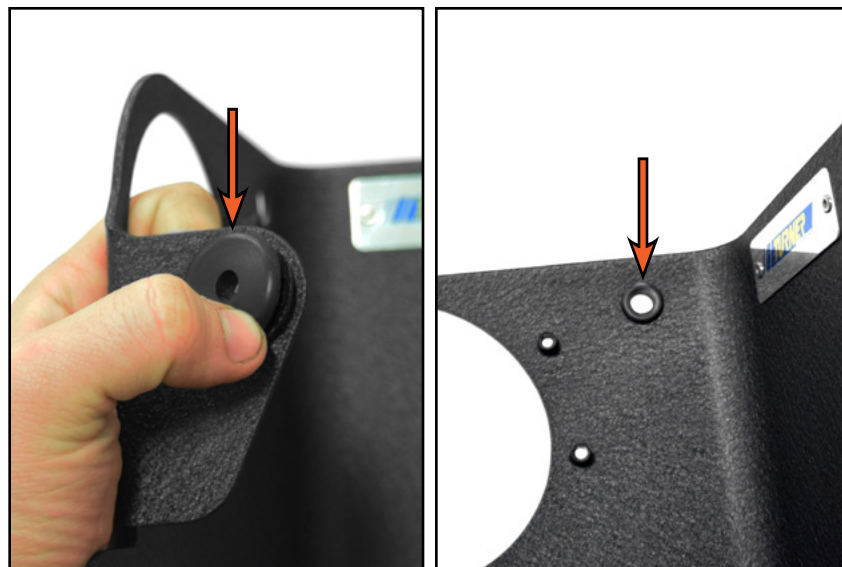


### Step 4:

Install both provided push-in grommets into the two holes in the heat shield as shown in the photos on the right.



If you purchased the **open** intake system, the smaller grommet will be replaced with a solid rubber plug.



## INSTALLING THE NEW INTAKE SYSTEM

### Step 5:

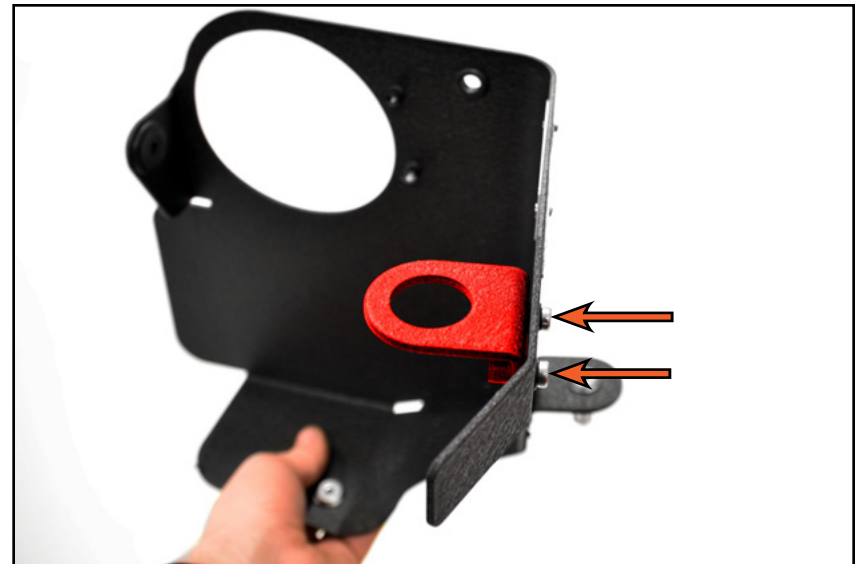
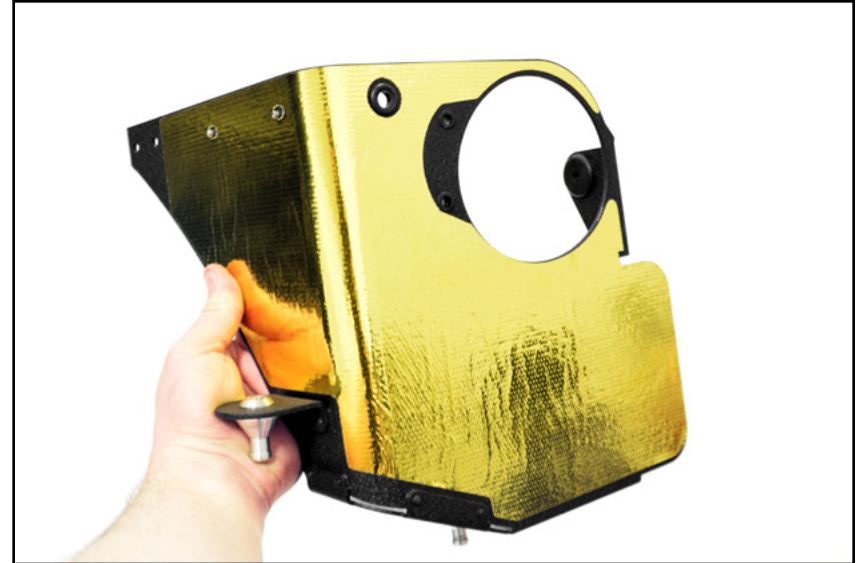
Line up the reflect-a-gold sticker with the heat shield, then remove the backing and adhere the sticker to the heat shield.



If you purchased the **open** intake system, install the two small rubber plugs into the last two holes in the heat shield then skip to the next page. If you purchased the **closed** intake system, continue to the next step.

### Step 6: 3mm Hex (Allen)

Install the lid mounting bracket (highlighted in **RED**) onto the heat shield as shown, using the two M5 screws and washers (arrows) to secure it in place.





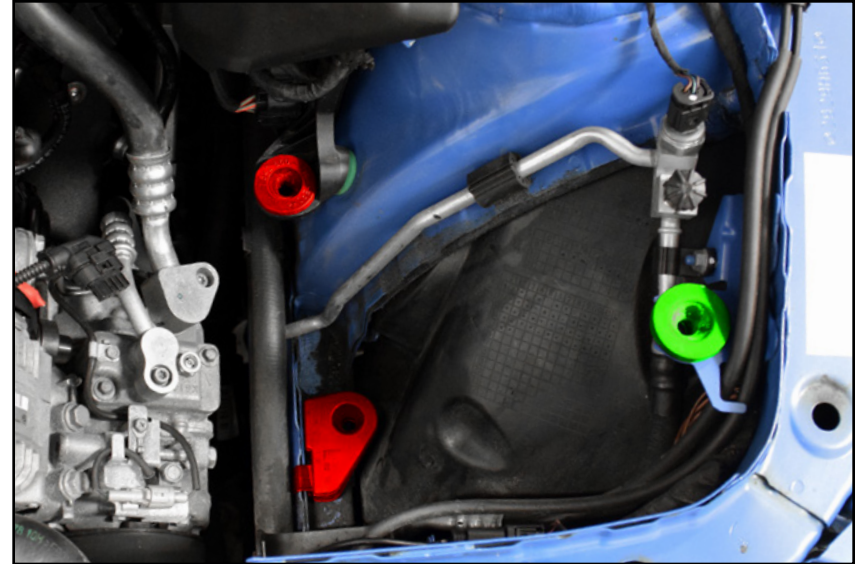
## INSTALLING THE NEW INTAKE SYSTEM

### Step 7:

Install the new provided grommet and bottom support (highlighted in **RED**) into the locations shown in the photo on the right.



If you have purchased the **closed** intake system install the additional grommet (highlighted in **GREEN**) as shown in the photo on the right.



### Step 8:

Install the clip nut over the notch in the body of the vehicle as shown.



## INSTALLING THE NEW INTAKE SYSTEM

### Step 9:

Install the heat shield by lining it up and pushing it downward to pop it into the mounting grommets.



### Step 10: 4mm Hex (Allen)

Install the provided M6 bolt through the heat shield grommet and tighten it until snug.



## INSTALLING THE NEW INTAKE SYSTEM

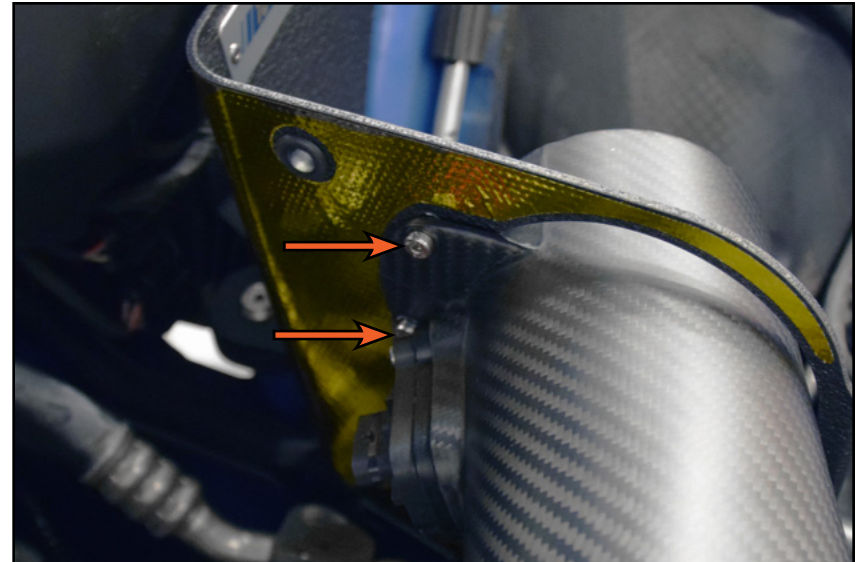
### Step 11:

Slide the intake pipe into the corrugated lower intake pipe but leave the clamp loose for now.



### Step 12: 3mm Hex (Allen)

Install the two M5 screws and washers (arrows) to secure the intake pipe to the heat shield.





## INSTALLING THE NEW INTAKE SYSTEM

### Step 13: Flat Head Screwdriver

Before we move on, don't forget to go back and tighten the clamp on the lower intake pipe.



### Step 14:

Reinstall the MAF sensor connector.





## INSTALLING THE NEW INTAKE SYSTEM

### Step 15:

Install the vacuum line onto the flange on the intake pipe.



If your vehicle does not come equipped with this vacuum line, install the provided cap into this flange in it's place.

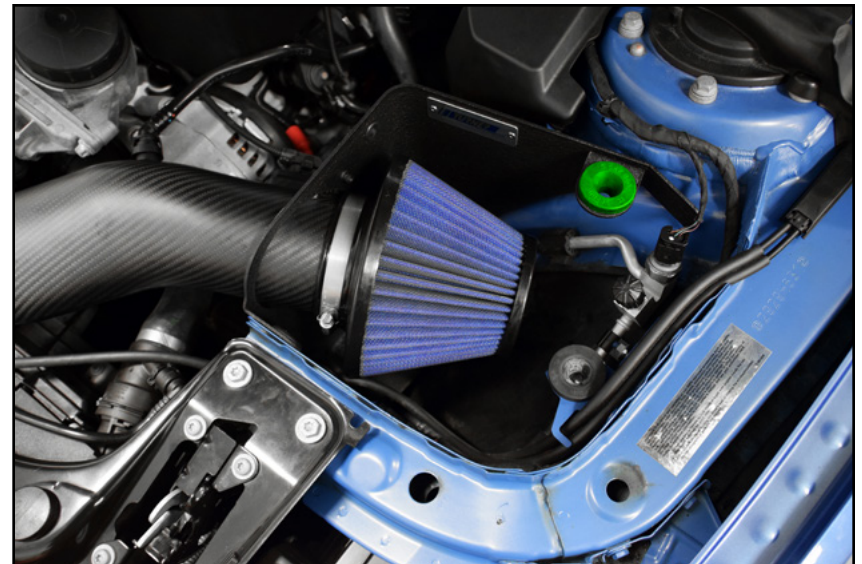


### Step 16: Flat Head Screwdriver

Install the air filter onto the intake pipe and tighten the clamp to secure it.



If you have purchased the **closed** intake system install the additional grommet (highlighted in **GREEN**) into the lid support bracket as shown in the photo on the right.



## INSTALLING THE NEW INTAKE SYSTEM

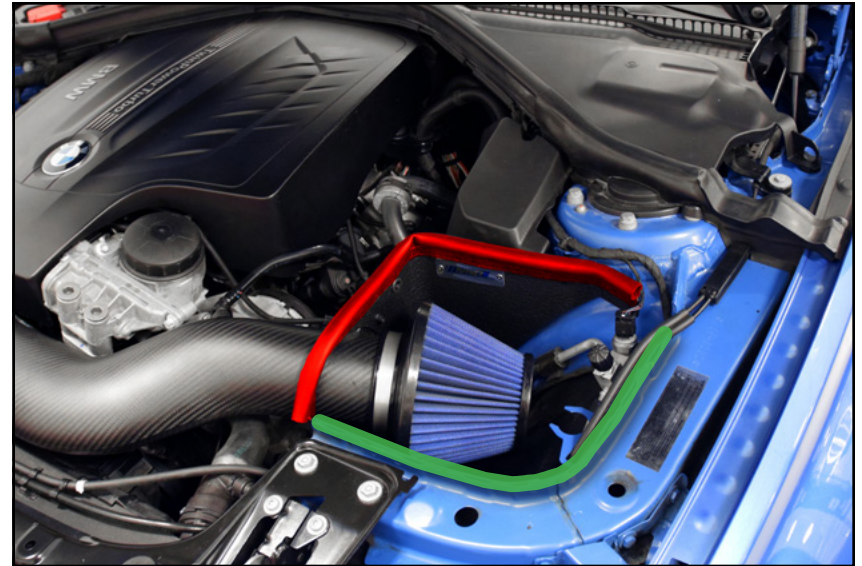
### Step 17:

Apply the rubber edge in the area highlighted in **GREEN** to help seal the intake to the hood, making it more air-tight.



If you have purchased the **open** intake system, Install the provided bulb seal (highlighted in **RED**) across the top of the heat shield. If you have purchased the **closed** intake system, proceed to the next page.

***Congratulations, your open intake system installation is complete!***



### Step 18:

Lay the carbon fiber lid into place so that the stud on the side of the lid slides into the small grommet on the side of the heat shield, then push downward to pop the other two mounting studs into the grommets, securing the lid in place.

***Congratulations, your closed intake system installation is complete!***



## CARBON FIBER CLEANING AND CARE

Turner Motorsport Carbon Fiber Intakes are clear coated for excellent finish durability and UV resistance right out of the box.

Carbon fiber can be washed with any gentle cleanser or soap. If it is safe for the paint on your car, it will be safe for the carbon fiber.

Be extra careful not to nick or deeply scratch the clear coat on the carbon fiber. This can lead to water intrusion into the carbon fiber which will damage the finish and the integrity of the intake.

If the clear coat does get nicked or deeply scratched to expose the carbon fiber, seal the damaged area thoroughly with a clear coat touch up or clear nail polish.

To retain UV resistance and protect the finish, we recommend regular waxing with a high quality caranuba wax.

Small surface scratches and light oxidation can be buffed out using the same methods and cautions you would use on the vehicle paint.

**Carbon Fiber Cleaning and Care Kit,  
available at [turnermotorsport.com](http://turnermotorsport.com)**

[T#383078](#)





## Your N55 Carbon Fiber Intake System installation is complete!



### These instructions are provided as a courtesy by Turner Motorsport

Proper service and repair procedures are vital to the safe, reliable operation of all motor vehicles as well as the personal safety of those performing the repairs. Standard safety procedures and precautions (including use of safety goggles and proper tools and equipment) should be followed at all times to eliminate the possibility of personal injury or improper service which could damage the vehicle or compromise its safety.

Although this material has been prepared with the intent to provide reliable information, no warranty (express or implied) is made as to its accuracy or completeness. Neither is any liability assumed for loss or damage resulting from reliance on this material. SPECIFICALLY, NO WARRANTY OF MERCHANTABILITY, FITNESS FOR A PARTICULAR PURPOSE OR ANY OTHER WARRANTY IS MADE OR TO BE IMPLIED WITH RESPECT TO THIS MATERIAL. In no event will Turner Motorsport, Incorporated or its affiliates be liable for any damages, direct or indirect, consequential or compensatory, arising out of the use of this material.