

Audi B9 Carbon Fiber Air Box Inlet Scoop Installation Instructions - **ES3537354**

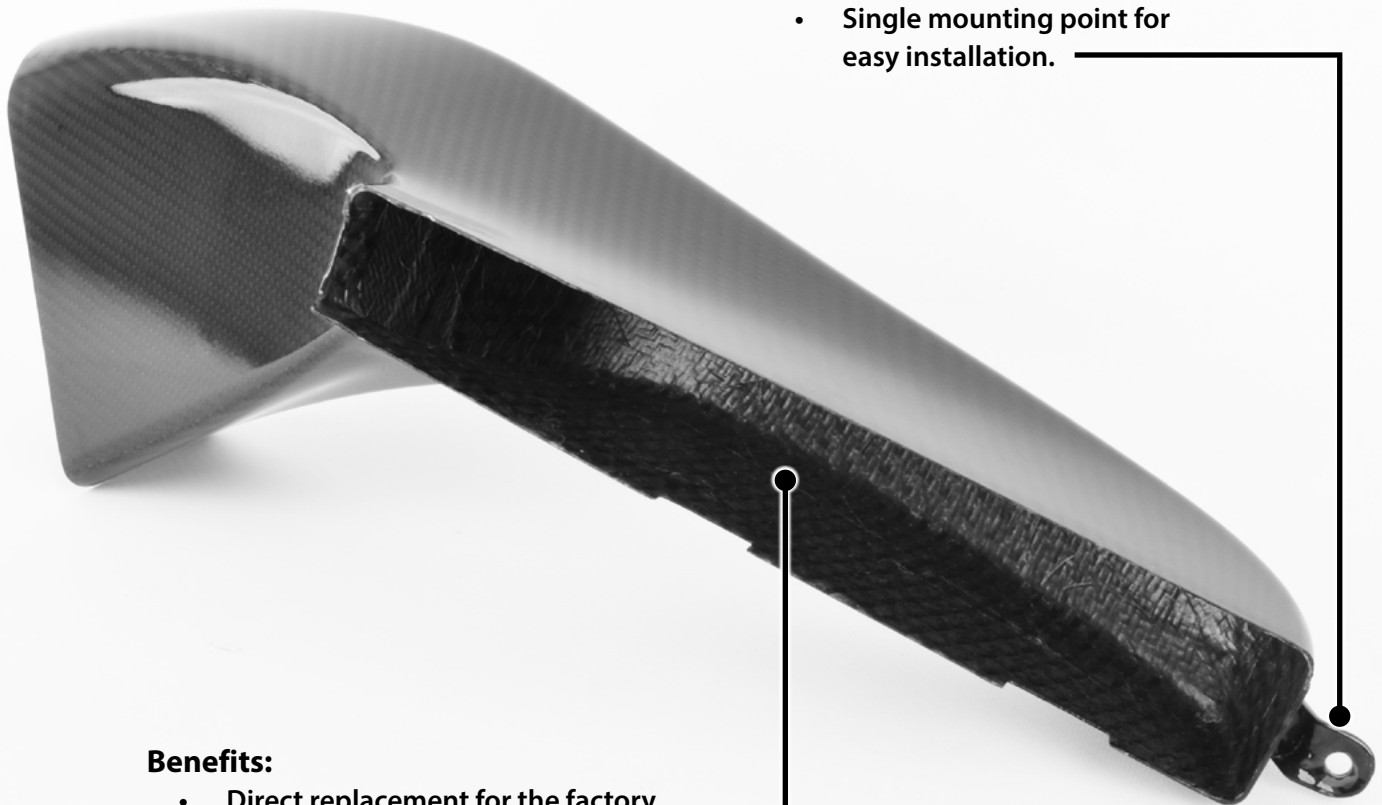


Thank you for purchasing our new ECS Tuning Carbon Fiber Air Box Inlet Scoop, we appreciate your business!



Features:

- Single mounting point for easy installation.

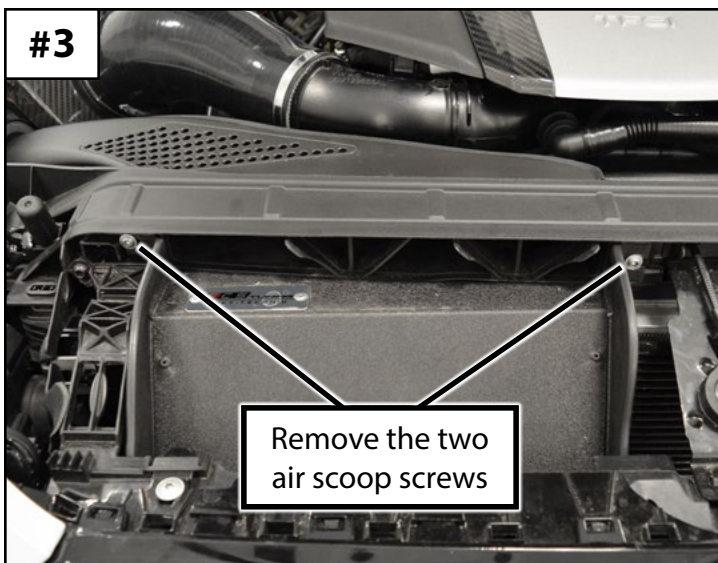
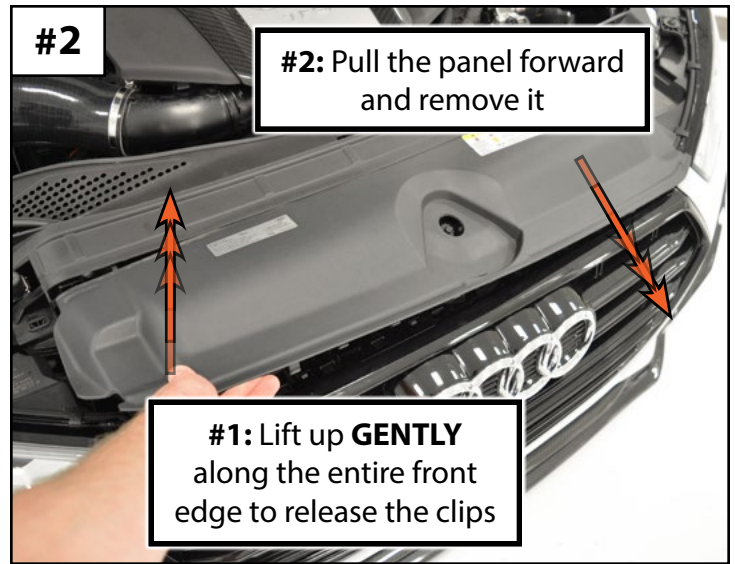


Benefits:

- Direct replacement for the factory plastic inlet.
- Perfect dress-up option without the need to change to a full aftermarket system.
- Provides a fully sealed system from the grille to the airbox, unlike the OEM inlet.

Section 1: Removing the Factory Air Box Inlet Scoop

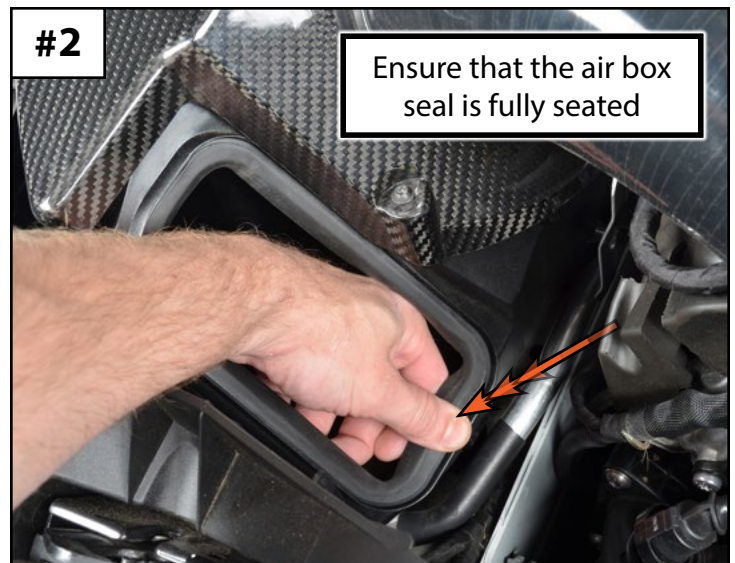
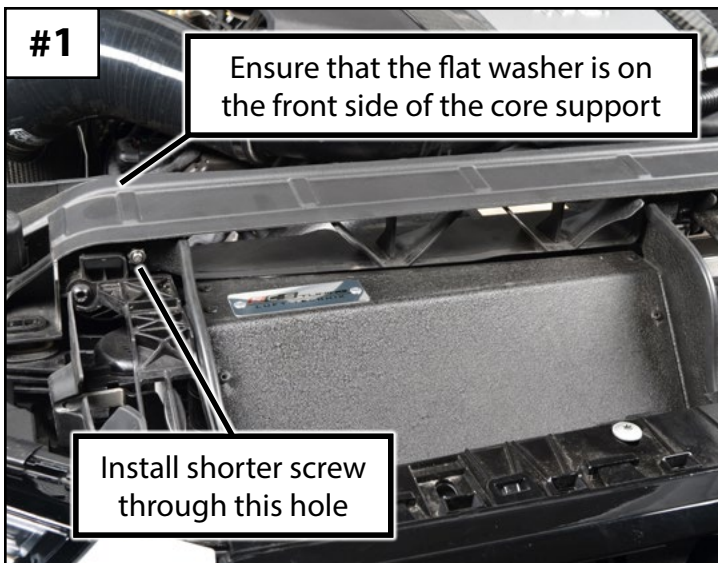
- Step #1**
- Look along the back edge of the hood release lever to locate the release button.
 - Push in on the button with your finger, then pull the hood release lever off.
- Step #2**
- Remove the radiator shroud by pulling up on the front edge to unclip it from the grille, then pull it forward to slide it out of the core support.
- Step #3**
- Remove the two intake air scoop screws, but do not remove the air scoop.
 - If you have a factory intake system, these will be T25 screws.
 - If you have an ECS intake system, these will be 4mm allen screws, and you will need to remove the air box lid (if equipped).
- Step #4**
- Pull the air box inlet scoop out of the air box and the core support, then remove it from the vehicle.



You are now ready to install your new Carbon Fiber Air Box Inlet Scoop!

Section 2: Installing the New Carbon Fiber Air Box Inlet Scoop

- Step #1**
- Your carbon fiber air box inlet scoop kit includes two different length screws. Insert the shorter screw (50mm long) into the RH (Passenger's side) air scoop hole. This screw is used to secure the front panels and the air scoop together, it does not secure the air box inlet scoop. Tighten the screw until snug.
 - Ensure that the included flat washer is on the back side of the core support, not the front side.
 - It does not matter whether the screw is inserted through the front or rear.
- Step #2**
- Ensure that the air box seal is fully seated. It can sometimes become dislodged while removing the air box inlet scoop
- Step #3**
- Insert the shorter screw (50mm long) into the LH (Driver's side) air scoop hole. This screw is used to secure the front panels, the air scoop, and the air box inlet scoop together. Tighten the screw until snug.
 - Ensure that the included flat washer is on the back side of the core support, not the front side.
 - It does not matter whether the screw is inserted through the front or rear.



Your installation is now complete!