



VW MK7 GTI Rear Diffuser

Installation Instructions - [Click HERE to Shop](#)

Skill Level 1 - Easy



Proper service and repair procedures are vital to the safe, reliable operation of all motor vehicles as well as the personal safety of those performing the repairs. Standard safety procedures and precautions (including use of safety goggles and proper tools and equipment) should be followed at all times to eliminate the possibility of personal injury or improper service which could damage the vehicle or compromise its safety.

INSTALLATION NOTES

- **RH** refers to the *passenger side* of the vehicle.
- **LH** refers to the *driver side* of the vehicle.
- Always use the proper torque specifications.
- If applicable to this installation, torque specifications will be listed throughout the document and at the end as well.
- Please read all of these instructions and familiarize yourself with the complete process **BEFORE** you begin.

GENERAL PREPARATION AND SAFETY INFORMATION

ECS Tuning cares about your health and safety, please read the following safety information. This information pertains to automotive service in general, and while it may not pertain to every job you do, please remember and share these important safety tips.

- Park your car in a safe, well lit, level area.
- Shut the engine off and remove the key from the ignition switch.
- Make sure any remote start devices are properly disabled.
- **ALWAYS** wear safety glasses.
- Make sure the parking brake is applied until the vehicle is safely lifted and supported.
- Whether lifting a vehicle using an automotive lift or a hydraulic jack, be sure and utilize the factory specified lift points.
- Lifting a vehicle in an incorrect location can cause damage to the suspension/running gear.
- **ALWAYS** support the vehicle with jack stands.
- **ALWAYS** read and follow all safety information and warnings for the equipment you are using.



NEVER get underneath a vehicle that is supported only by a jack, and **ALWAYS** make sure that the vehicle is securely supported on jack stands.

REMOVING THE STOCK REAR VALANCE

Step 1: T15 Torx, T25 Torx

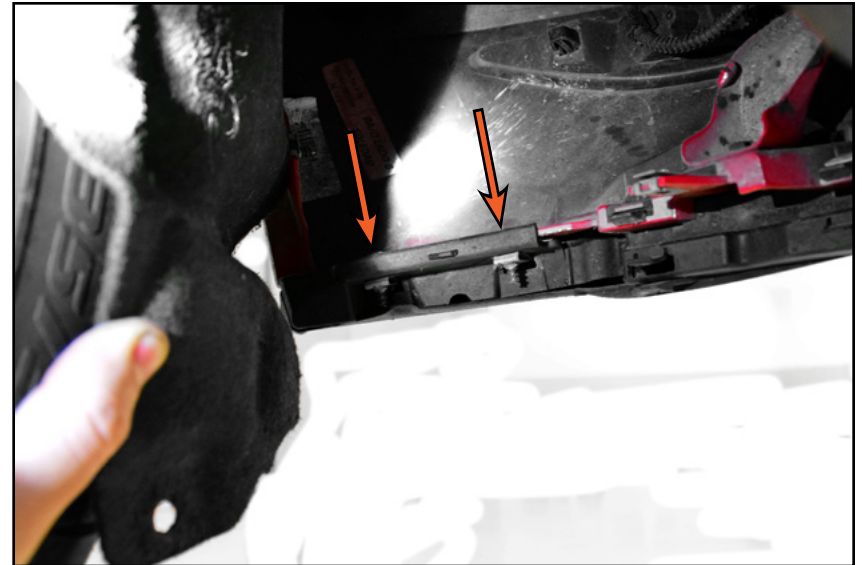
First, remove the two small T15 torx plastic screws from the rectangle-shaped clips (circled in **YELLOW**) on the underside of the stock rear valance, then pull down to pop the clips (highlighted in **GREEN** in inset photo) free from the valance. Remove the two T25 torx screws (circled in **GREEN**) which secure the fender liners to the rear bumper.



REMOVING THE STOCK REAR VALANCE

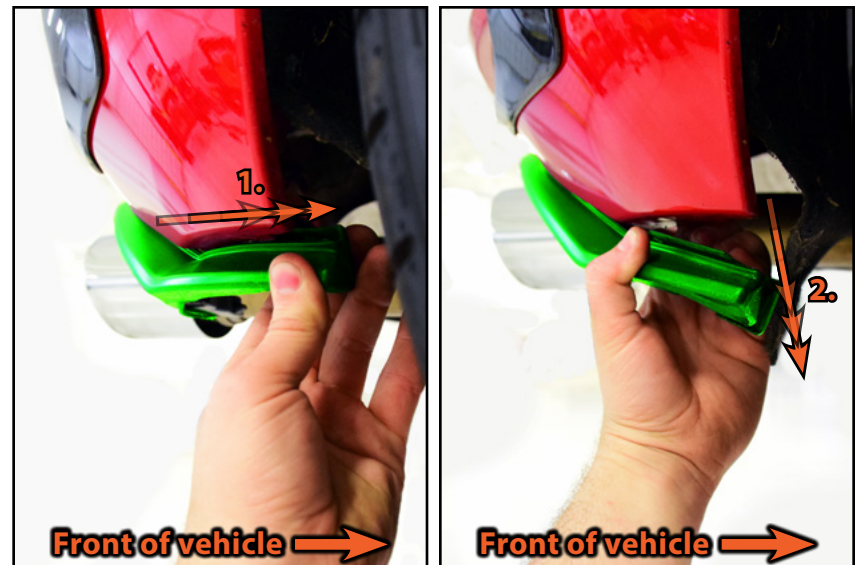
Step 2: T25 Torx

Gently pull fender liner back to expose the two screws (arrows) which secure the valance to the bumper on either side. Remove the screws.



Step 3:

Grasp the end of the valance (highlighted in **GREEN**) and pull it inward (towards the center of the vehicle) then down to pop it free from the bumper. Repeat this process on the other side.



REMOVING THE STOCK REAR VALANCE

Step 4:

Pop the two mounting tabs (arrows) free from the bumper on either side.



Step 5:

Firmly pull the rear valance away from the bumper, starting on the sides and slowly working your way towards the center until it pops free.



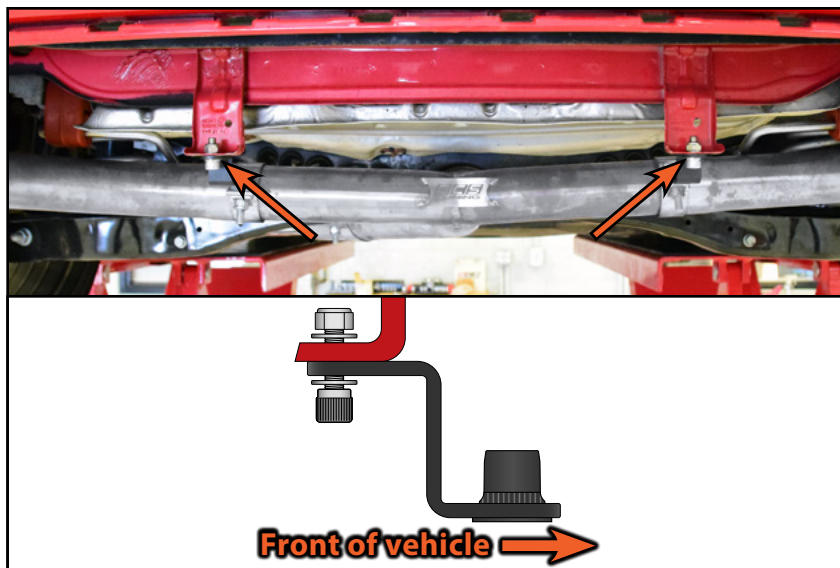
Removing the stock rear valance will take a good bit of force. Place one hand on the rear bumper to brace it, then grip the valance at the first clip and firmly pull back until the clip pops free from the bumper. Repeat this process with each clip until the valance comes free.



INSTALLING THE NEW REAR DIFFUSER

Step 1: 6mm Hex (Allen), 13mm Wrench

Install the provided brackets into the two factory mounting brackets (arrows), making sure the brackets face towards the front of vehicle as shown in the illustration on the bottom.



Step 2:

Carefully lift the new carbon fiber diffuser into place and gently push inward to pop the mounting clips into the bumper, holding it in place.



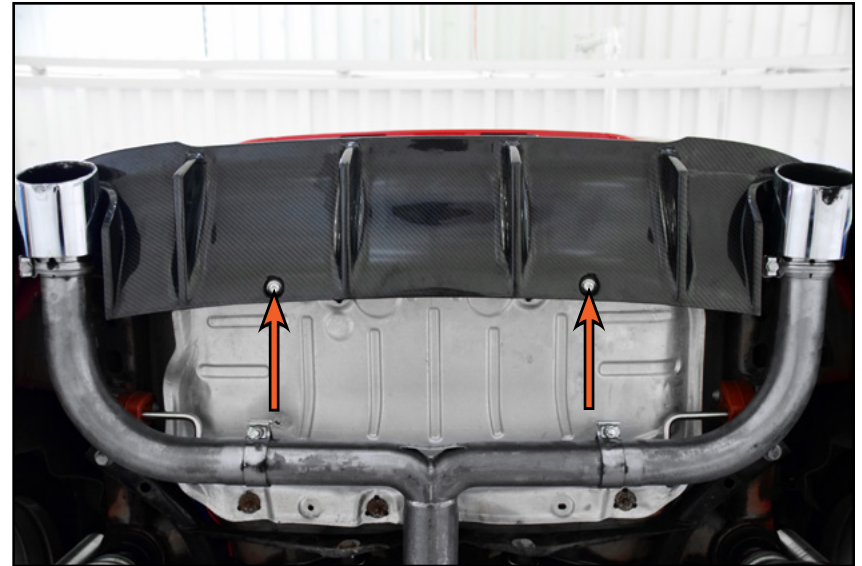
INSTALLING THE NEW REAR DIFFUSER

Step 3: 6mm Hex (Allen)

Install the two mounting bolts (arrows) through the diffuser and into the mounting brackets as shown and tighten until snug.



Be careful not to over tighten the bolts. Over tightening the bolts can crack the carbon fiber.



Step 4: 6mm Hex (Allen)

Slide a washer onto each bolt and carefully guide it through the access hole in the bottom of the valance and up through the hole in the underside of the bumper as shown.



INSTALLING THE NEW REAR DIFFUSER

Step 5: 6mm Hex (Allen), 10mm Wrench

Slide a washer and nylon lock nut onto the exposed threads of each bolt and tighten it until snug.

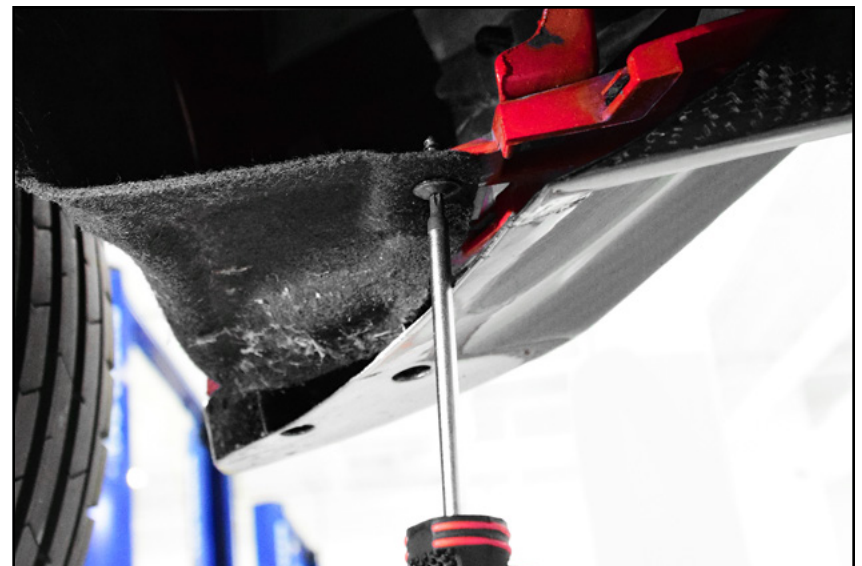
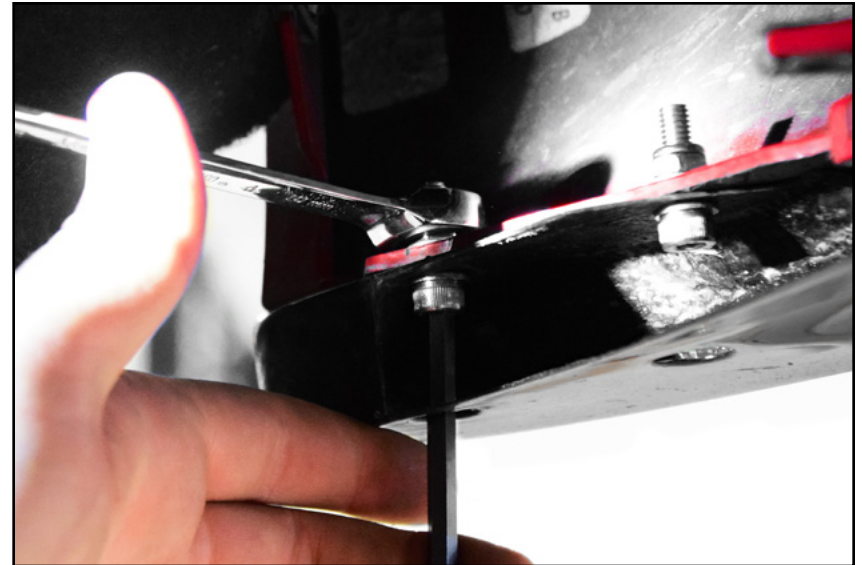


Be careful not to over tighten the nuts. Over tightening the nuts can crack the carbon fiber.

Step 6: T25 Torx

Fold the fender liner back into place and reinstall the screw to hold it in place.

Congratulations, your installation is complete!



CARBON FIBER CLEANING AND CARE

ECS Tuning Carbon Fiber Intakes are clear coated for excellent finish durability and UV resistance right out of the box.

Carbon fiber can be washed with any gentle cleanser or soap. If it is safe for the paint on your car, it will be safe for the carbon fiber.

Be extra careful not to nick or deeply scratch the clear coat on the carbon fiber. This can lead to water intrusion into the carbon fiber which will damage the finish and the integrity of the intake.

If the clear coat does get nicked or deeply scratched to expose the carbon fiber, seal the damaged area thoroughly with a clear coat touch up or clear nail polish.

To retain UV resistance and protect the finish, we recommend regular waxing with a high quality caranuba wax.

Small surface scratches and light oxidation can be buffed out using the same methods and cautions you would use on the vehicle paint.

Carbon Fiber Cleaning and Care Kit
(available at ecstuning.com)

[ES#2914954](#)



Your Rear Diffuser installation is complete!



These instructions are provided as a courtesy by ECS Tuning

Proper service and repair procedures are vital to the safe, reliable operation of all motor vehicles as well as the personal safety of those performing the repairs. Standard safety procedures and precautions (including use of safety goggles and proper tools and equipment) should be followed at all times to eliminate the possibility of personal injury or improper service which could damage the vehicle or compromise its safety.

Although this material has been prepared with the intent to provide reliable information, no warranty (express or implied) is made as to its accuracy or completeness. Neither is any liability assumed for loss or damage resulting from reliance on this material. SPECIFICALLY, NO WARRANTY OF MERCHANTABILITY, FITNESS FOR A PARTICULAR PURPOSE OR ANY OTHER WARRANTY IS MADE OR TO BE IMPLIED WITH RESPECT TO THIS MATERIAL. In no event will ECS Tuning, Incorporated or its affiliates be liable for any damages, direct or indirect, consequential or compensatory, arising out of the use of this material.