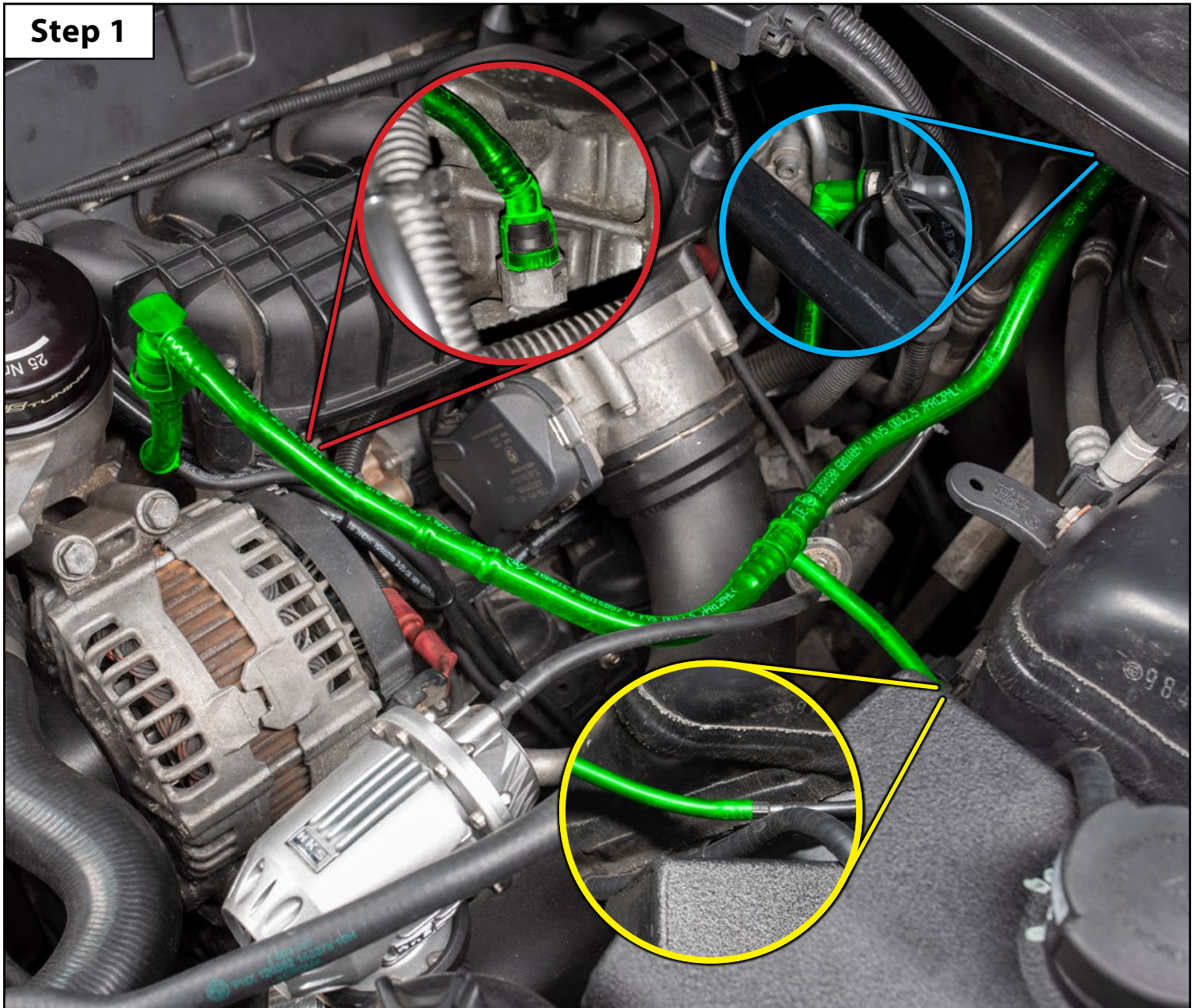
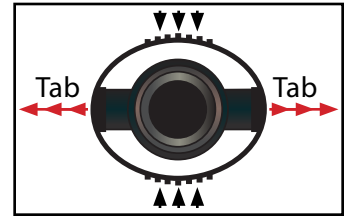
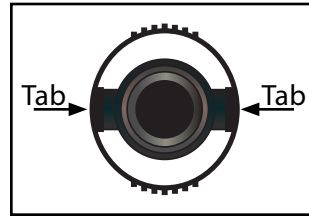


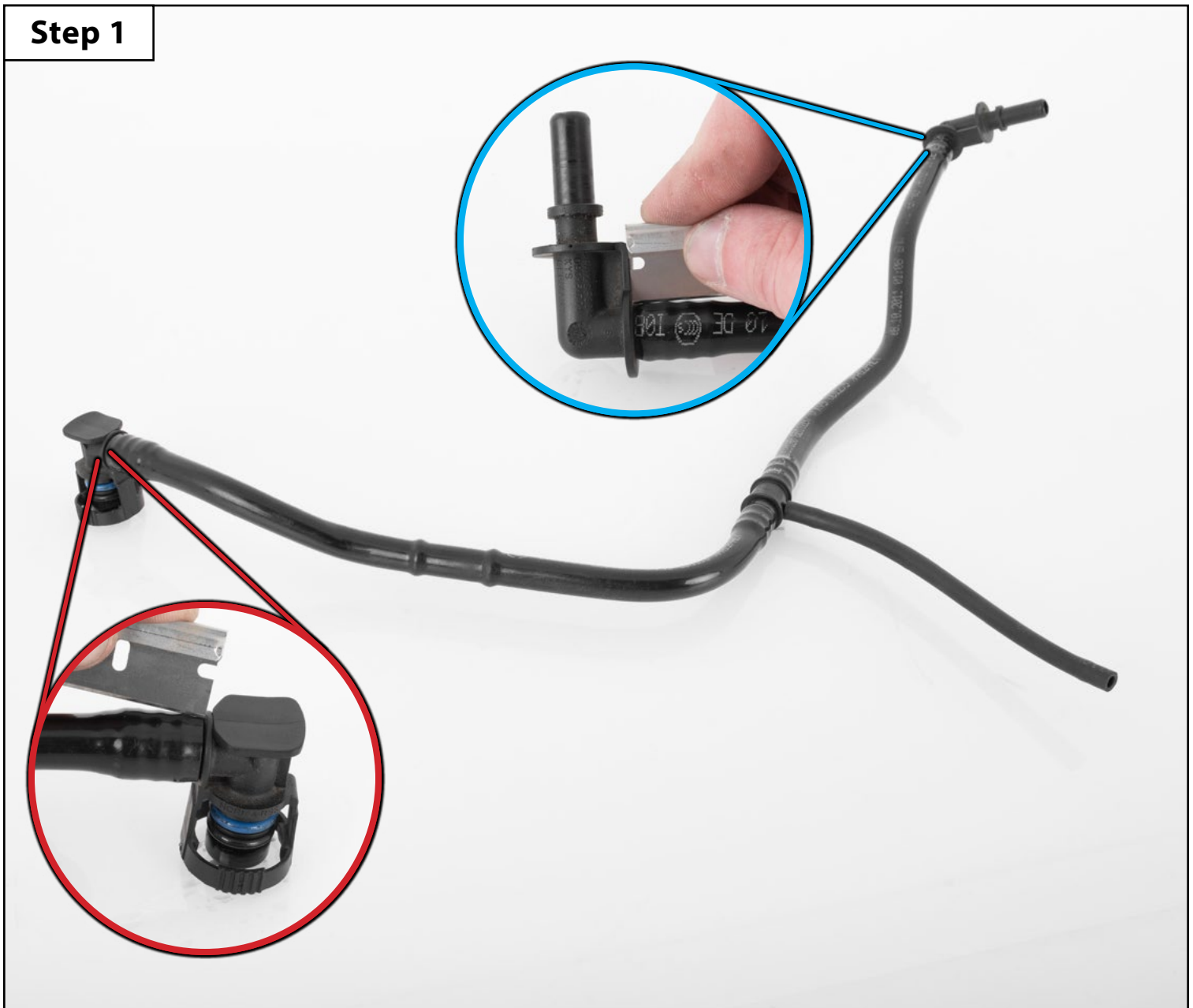
## Section 1: Removing the Stock Vacuum Line Assembly

- Step 1**
- Remove the stock vacuum line assembly from the engine bay. There are three connection points:
    - The forward connection is located just behind the alternator (**RED** inset photo below). Space is tight around this connection, patience is key. To release this fitting you need to squeeze the two knurled sides of the locking ring inward (reference the illustrations on the right).
    - The rearward connection is located just below the wiper cowl (**BLUE** inset photo below). Push the white locking tab inward on the connector to release this fitting.
    - Disconnect the rubber hose which runs from the vacuum line assembly to the hose connection on the LH strut tower (**YELLOW** inset photo below). This hose supplies engine vacuum to the exhaust valve located on the muffler.



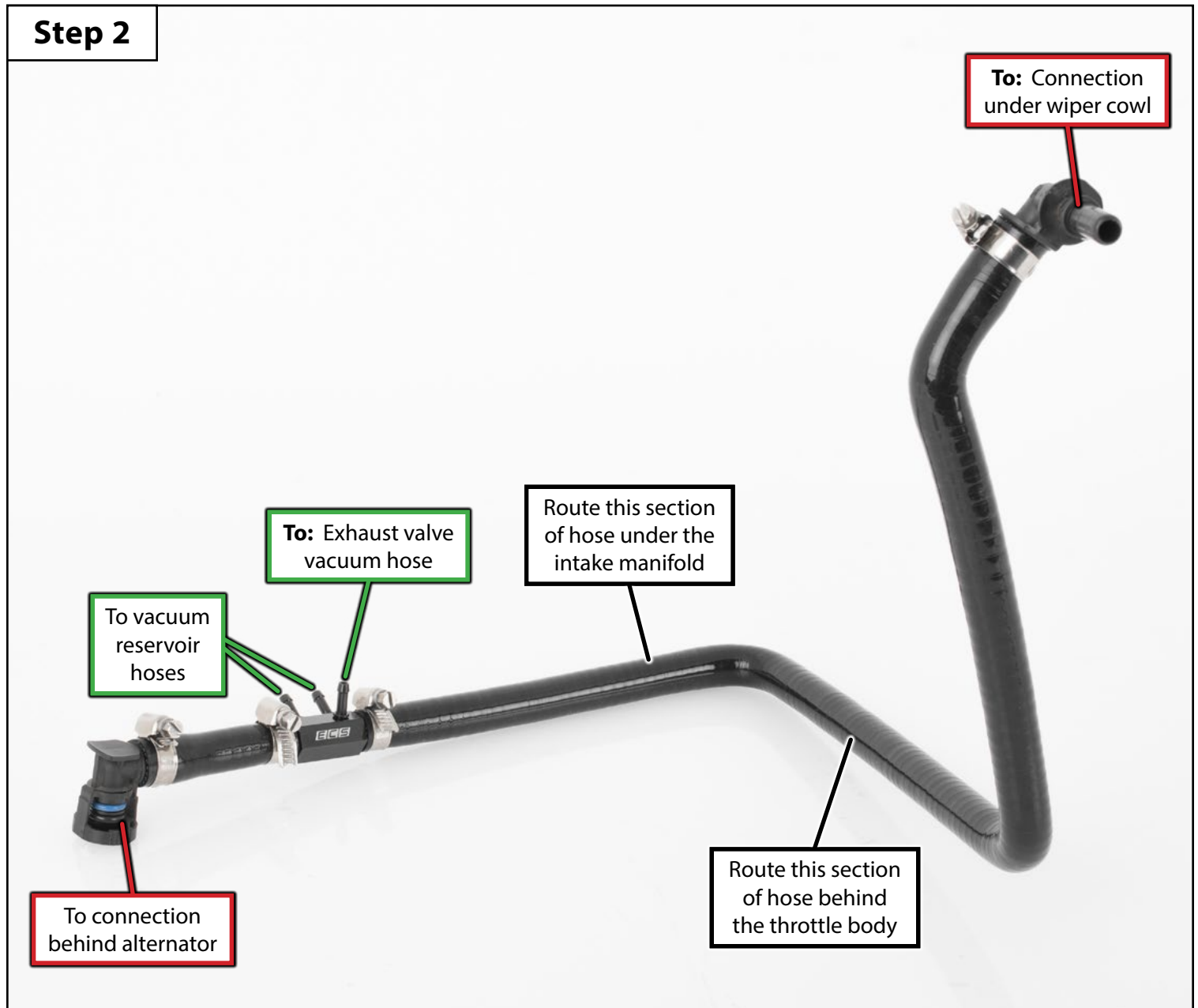
## Section 2: Installing the New Vacuum Line Relocation Kit

- Step 1**
- Carefully cut the vacuum line off of two 90° fittings. These fittings need to be transferred to the new silicone hose (see next page).
    - Be very careful here to avoid cutting into the plastic barbs on the old fittings.



## Section 2: Installing the New Vacuum Line Relocation Kit

- Step 2**
- Transfer the two fittings over to the new silicone hose set as shown below.
  - Route the new hose set under the intake manifold and behind the throttle body (**BLACK** boxes below).
  - Connect the forward and rearward fittings in the engine bay (**RED** boxes below).
  - Connect the hoses from the vacuum reservoirs to the billet adapter. Use the supplied vacuum hose to connect the exhaust vacuum valve line to the billet adapter (**GREEN** boxes below).
  - Tighten all of the hose clamps until snug.





**Thank you for purchasing your new ECS Tuning  
N54 Vacuum Line Relocation Kit, we appreciate your business!**

