



## BMW N63 Performance Module Installation Instructions

Introducing the Turner Performance Module! This tuning module plugs in ahead of the engine computer on the wiring harness. It's not the run-of-the-mill 'piggy-back' style upgrades you find for less. Inside our module is a sophisticated control unit that is designed to complement and work with the factory ECU. This unit intercepts the signals from the boost pressure sensors to alter the ECU perception of load. The ECU then adjusts parameters such as fueling, ignition, and others to reach the desired load levels, resulting in more horsepower and torque. The harness has factory-style weather-proof plugs to connect in-line with each sensor. All of the factory safeguards remain in place, including overload protection and warm-up protocols to preserve longevity and factory drive-ability, and this type of system is unaffected by factory BMW updates and service.

If you're looking for a substantial bump in power output, with minimal downtime for installation, full serviceability, and easy conversion back to stock, then the Turner Performance Module is unbeatable!

**Installation time:** 1 hour



**These installation instructions have been broken up into several sections:**

**1) TPM Harness Types (Early vs. Late Production N63)**

[\(Page 2\)](#)

**2) Overview**

[\(Page 4\)](#)

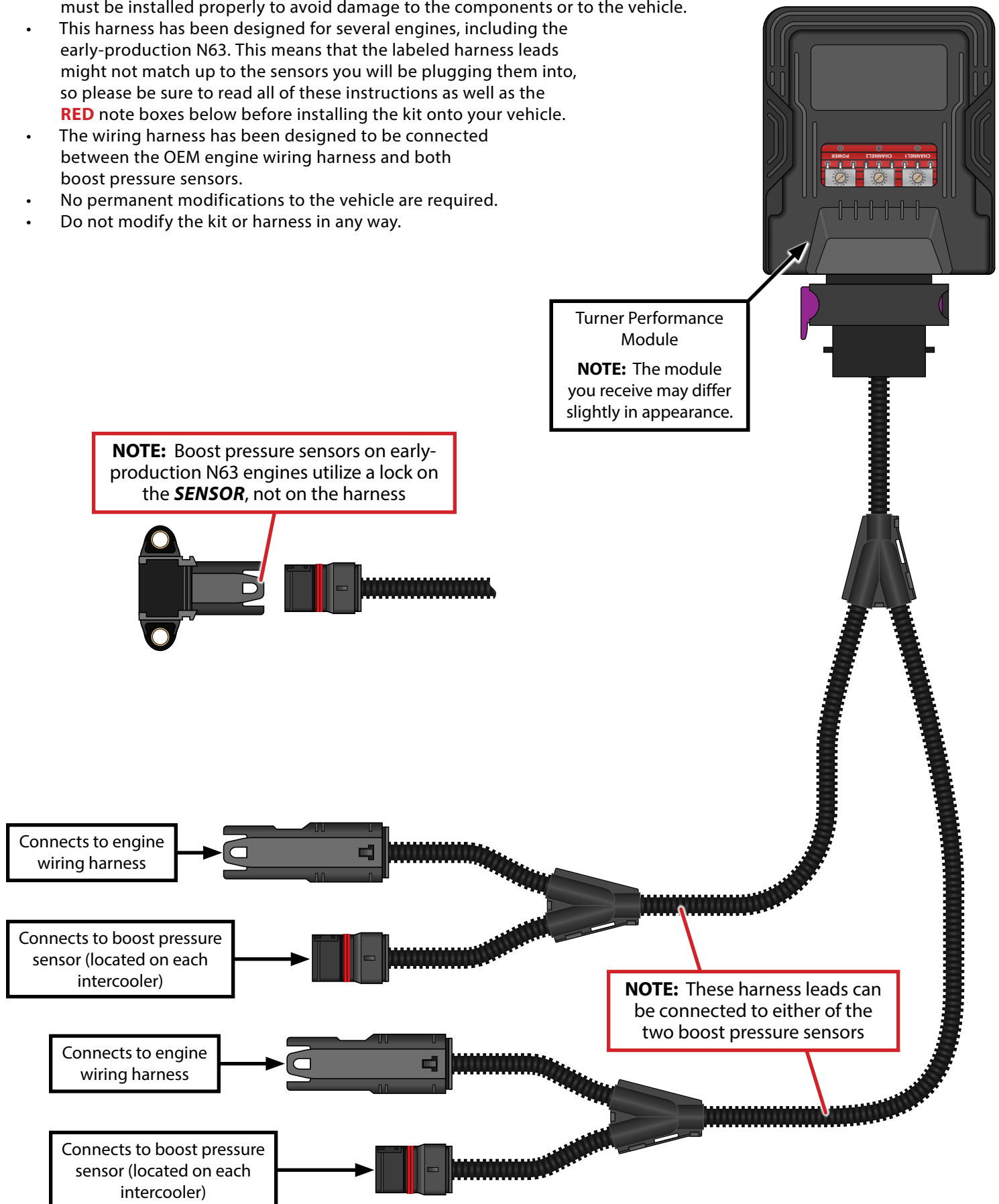
**3) Installation Instructions**

[\(Page 5\)](#)

Proper service and repair procedures are vital to the safe, reliable operation of all motor vehicles as well as the personal safety of those performing the repairs. Standard safety procedures and precautions (including use of safety goggles and proper tools and equipment) should be followed at all times to eliminate the possibility of personal injury or improper service which could damage the vehicle or compromise its safety.

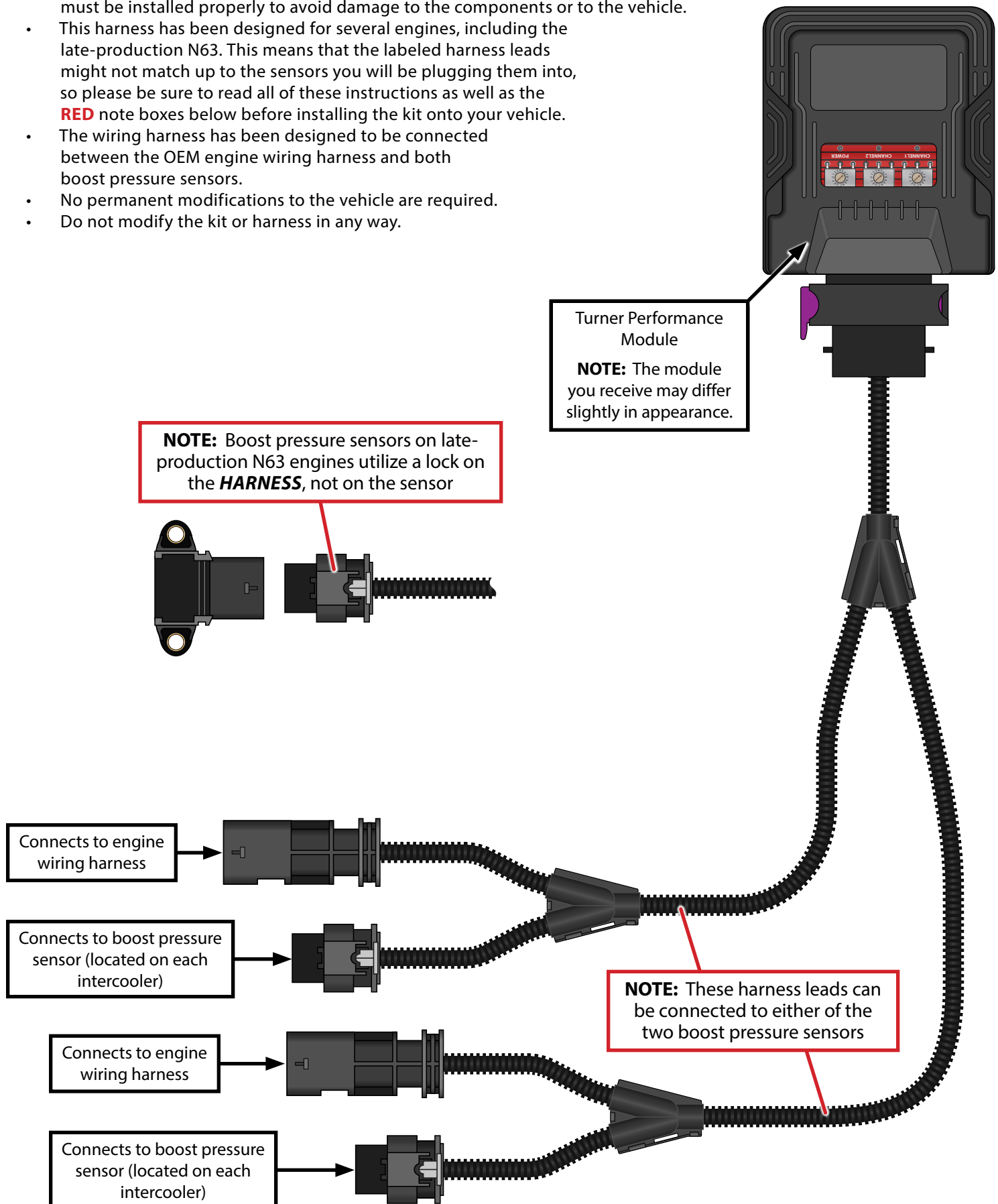
## Section 1: TPM Harness Types (Early-Production N63 Engines)

- The Turner Performance Module has been loaded with model-specific calibrations and must be installed properly to avoid damage to the components or to the vehicle.
- This harness has been designed for several engines, including the early-production N63. This means that the labeled harness leads might not match up to the sensors you will be plugging them into, so please be sure to read all of these instructions as well as the **RED** note boxes below before installing the kit onto your vehicle.
- The wiring harness has been designed to be connected between the OEM engine wiring harness and both boost pressure sensors.
- No permanent modifications to the vehicle are required.
- Do not modify the kit or harness in any way.



## Section 1: TPM Harness Types (Late-Production N63 Engines)

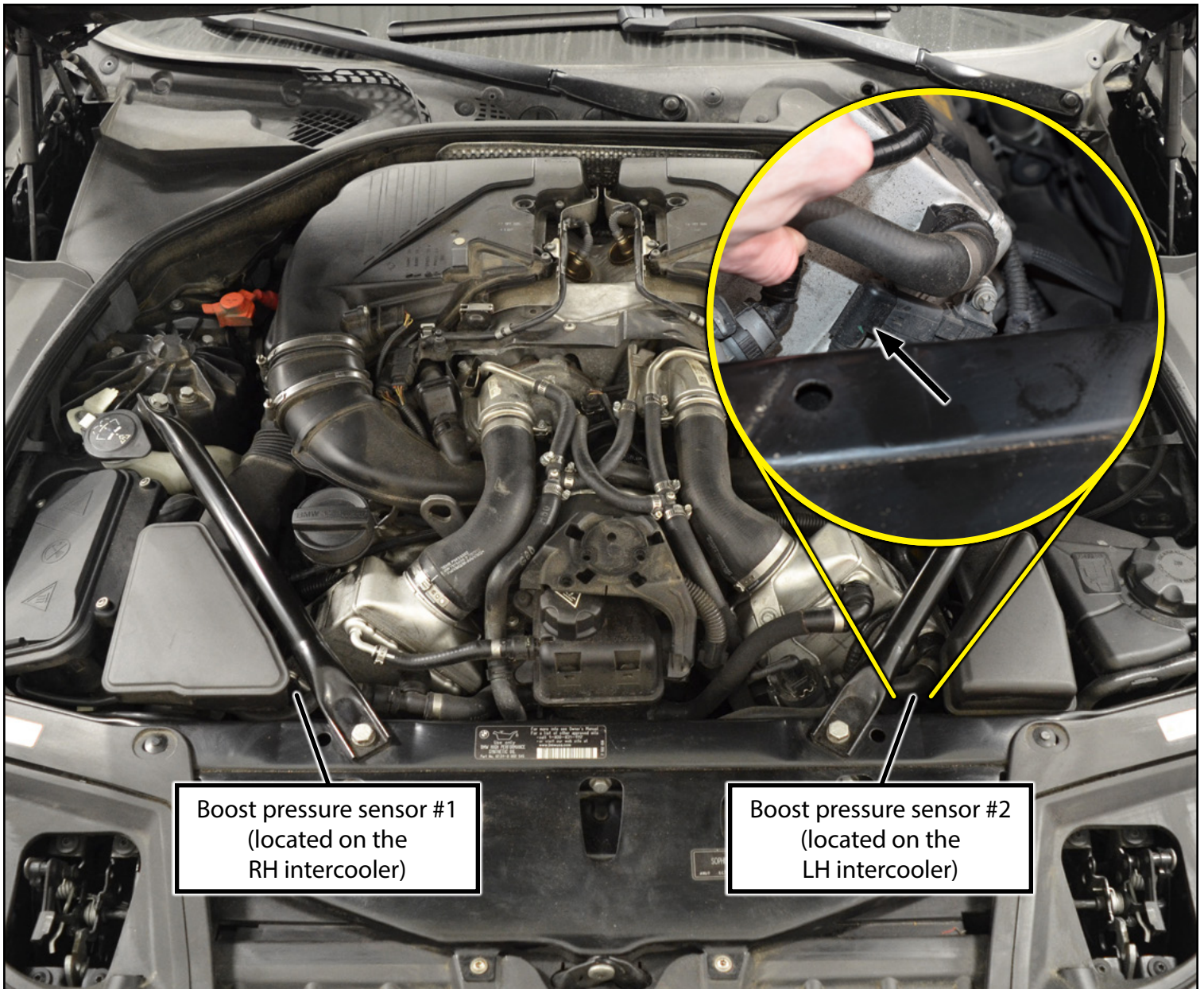
- The Turner Performance Module has been loaded with model-specific calibrations and must be installed properly to avoid damage to the components or to the vehicle.
- This harness has been designed for several engines, including the late-production N63. This means that the labeled harness leads might not match up to the sensors you will be plugging them into, so please be sure to read all of these instructions as well as the **RED** note boxes below before installing the kit onto your vehicle.
- The wiring harness has been designed to be connected between the OEM engine wiring harness and both boost pressure sensors.
- No permanent modifications to the vehicle are required.
- Do not modify the kit or harness in any way.





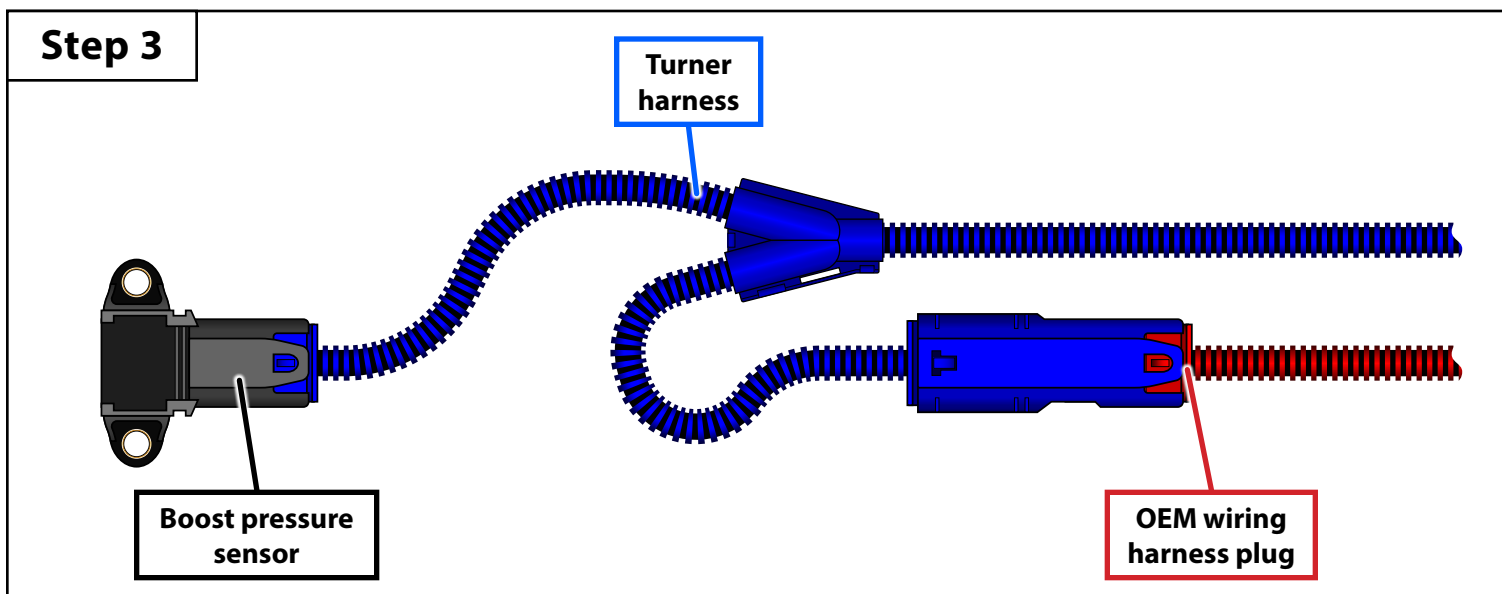
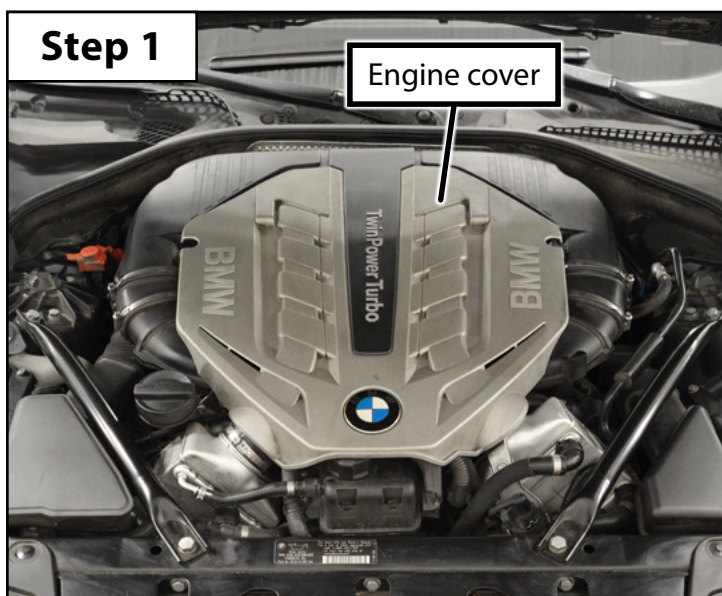
## Section 2: Overview

- We will not be showing a specific mounting location for the Turner Performance Module in these instructions, you can choose any suitable location (one option would be in the empty space underneath the rain tray cover).
- When selecting a mounting location for the module, be sure that the answers to the following questions are **YES**:
  - Will the module be adequately protected from water, surrounding components, or anything else which could damage it?
  - Can the wiring harness be safely routed to this location without stretching it, or modifying it in any way?
- Reference the photo below for component locations, then proceed to the next page for installation instructions.



## Section 3: Installation Instructions

- Step 1**
- Turn the ignition off and remove the key from the dash.
  - **Disconnect the negative (-) battery terminal.**
  - Wait for the engine to cool down.
  - Select a mounting location for the Turner Performance Module as outlined on the previous page.
    - **NOTE:** Discharge any static electricity by grounding yourself on a large metal object (tool chest, engine lift, etc.) **BEFORE** handling the Turner Performance Module.
  - Remove the engine cover.
- Step 2**
- Locate the boost pressure sensor on the LH bank intercooler.
    - There isn't a lot of room to work around these sensors due to their location on the front of the engine.
  - Release and disconnect the OEM wiring harness plug from the boost pressure sensor (highlighted in **RED**).
- Step 3**
- Connect the OEM wiring harness plug (**RED**) to the Turner harness (**BLUE**).
  - Connect the Turner harness (**BLUE**) to the boost pressure sensor.
  - **Repeat steps 2 & 3 to connect the boost pressure sensor on the RH bank intercooler.**



## Section 3: Installation Instructions

### Step 4

- Route a zip tie around the Turner Performance Module and secure it into place in your selected location.
- Route the Turner harness to the performance module. Use zip ties to secure it away from any moving or hot components.
- Connect the harness to the performance module (the connector will only go in one way).
- Next, push on the purple lock to secure the plug to the Module, once fully seated the plug should be secure (test this by gently tugging on the black connector).
- Reinstall any components that you removed or loosened in the reverse order of removal.
- Double check all of your connections. Enjoy your new power responsibly.

