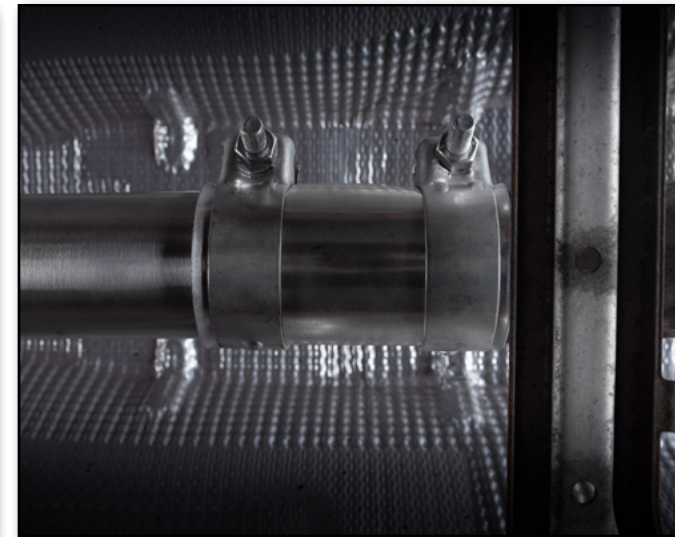
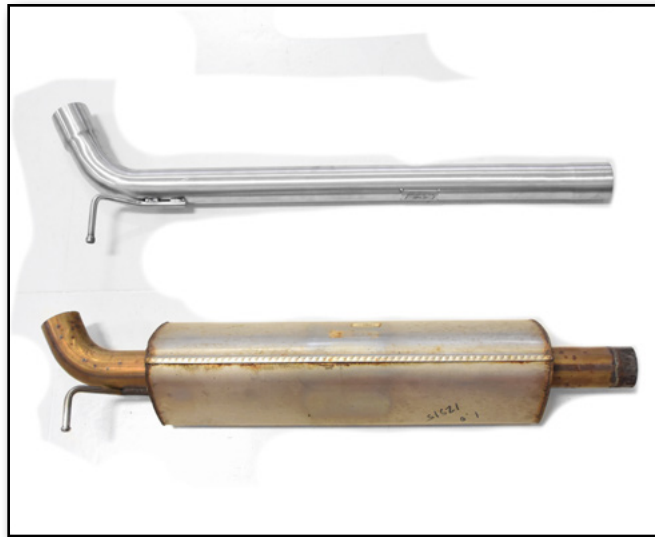




VW MK7/MK7.5 GTI Resonator Delete Kit
Installation Instructions - [ES3612470](#)



Skill Level 1
- Easy -
Basic Skills
Recommended



Proper service and repair procedures are vital to the safe, reliable operation of all motor vehicles as well as the personal safety of those performing the repairs. Standard safety procedures and precautions (including use of safety goggles and proper tools and equipment) should be followed at all times to eliminate the possibility of personal injury or improper service which could damage the vehicle or compromise its safety.

INTRODUCTION

The Project:

Today we are going to install our ECS Tuning Resonator Delete Kit for the VW MK7/MK7.5 GTI. This pipe has been designed by the engineering team at ECS Tuning to improve the flow of exhaust and give your VW a subtly deeper tone without the cost associated with a full cat-back exhaust system. This job requires only a few basic tools and we provide all the clamps so installation is a breeze! Patience and attention to detail are crucial for proper installation of this product, so take your time and remember: measure twice, cut once!

The photo below shows the new ECS resonator delete pipe laid next to the stock resonator that we will be removing in these installation instructions. As you can see, the new pipe will be a direct replacement for the stock center resonator, utilizing the stock mounting hanger location.



Be sure to read these instructions completely before you begin the project, and don't be afraid to refer back if you get stuck. Thank you for choosing ECS Tuning for all your performance and repair needs, we appreciate your business!

KIT CONTENTS



Resonator Delete Pipe (QTY 1)



65mm Clamp (QTY 1)



Sleeve Clamp (QTY 1)

TABLE OF CONTENTS

Required Tools and Equipment.....	pg.4
Installation and Safety Information.....	pg.5
Removing the Stock Resonator.....	pg.6
Installing the Resonator Delete Kit.....	pg.11
Schwaben Tools.....	pg.13

REQUIRED TOOLS

Note: The tools required for each step will be listed by the step number throughout these instructions.

Standard Automotive Tools

- Protecta-Sockets (for lug nuts)..... [ES#2221243](#)
- **3/8" Drive Ratchet**..... [ES#2765902](#)
- 3/8" Drive Torque Wrench..... [ES#2221245](#)
- **3/8" Drive Deep and Shallow Sockets** [ES#2763772](#)
- **3/8" Drive Extensions** [ES#2804822](#)
- **Hydraulic Floor Jack** [ES#2834951](#)
- Torx Drivers and Sockets [ES#11417/8](#)
- 1/2" Drive Deep and Shallow Sockets..... [ES#2839106](#)
- 1/2" Drive Ratchet
- 1/2" Drive Extensions
- 1/2" Drive Torque Wrench..... [ES#2221244](#)
- 1/2" Drive Breaker Bar [ES#2776653](#)
- Bench Mounted Vise
- Crows Foot Wrenches
- Hook and Pick Tool Set [ES#2778980](#)

Required For This Install

- 1/4" Drive Ratchet..... [ES#2823235](#)
- 1/4" Drive Deep and Shallow Sockets [ES#2823235](#)
- 1/4" Drive Extensions [ES#2823235](#)
- Plier and Cutter Set..... [ES#2804496](#)
- Flat and Phillips Screwdrivers [ES#2225921](#)
- **Jack Stands** [ES#2763355](#)
- Ball Pein Hammers
- Pry Bar Set..... [ES#1899378](#)
- Electric/Cordless Drill
- Wire Strippers/Crimpers
- Drill Bits
- Punch and Chisel Set
- Hex Bit (Allen) Wrenches and Sockets [ES#11420](#)
- Thread Repair Tools [ES#1306824](#)
- Open/Boxed End Wrench Set [ES#2765907](#)

Available On Our Website

Specialty Tools

- **Exhaust Hanger Removal Pliers** [ES#2784927](#)
- **Exhaust Pipe Cutter** [ES#3106581](#)
- **Die Grinder - OR - Metal File**

INSTALLATION NOTES

- **RH** refers to the *passenger side* of the vehicle.
- **LH** refers to the *driver side* of the vehicle.
- Always use the proper torque specifications.
- If applicable to this installation, torque specifications will be listed throughout the document and at the end as well.
- Please read all of these instructions and familiarize yourself with the complete process **BEFORE** you begin.

GENERAL PREPARATION AND SAFETY INFORMATION

ECS Tuning cares about your health and safety, please read the following safety information. This information pertains to automotive service in general, and while it may not pertain to every job you do, please remember and share these important safety tips.

- Park your car in a safe, well lit, level area.
- Shut the engine off and remove the key from the ignition switch.
- Make sure any remote start devices are properly disabled.
- **ALWAYS** wear safety glasses.
- Make sure the parking brake is applied until the vehicle is safely lifted and supported.
- Whether lifting a vehicle using an automotive lift or a hydraulic jack, be sure and utilize the factory specified lift points.
- Lifting a vehicle in an incorrect location can cause damage to the suspension/running gear.
- **ALWAYS** support the vehicle with jack stands.
- **ALWAYS** read and follow all safety information and warnings for the equipment you are using.

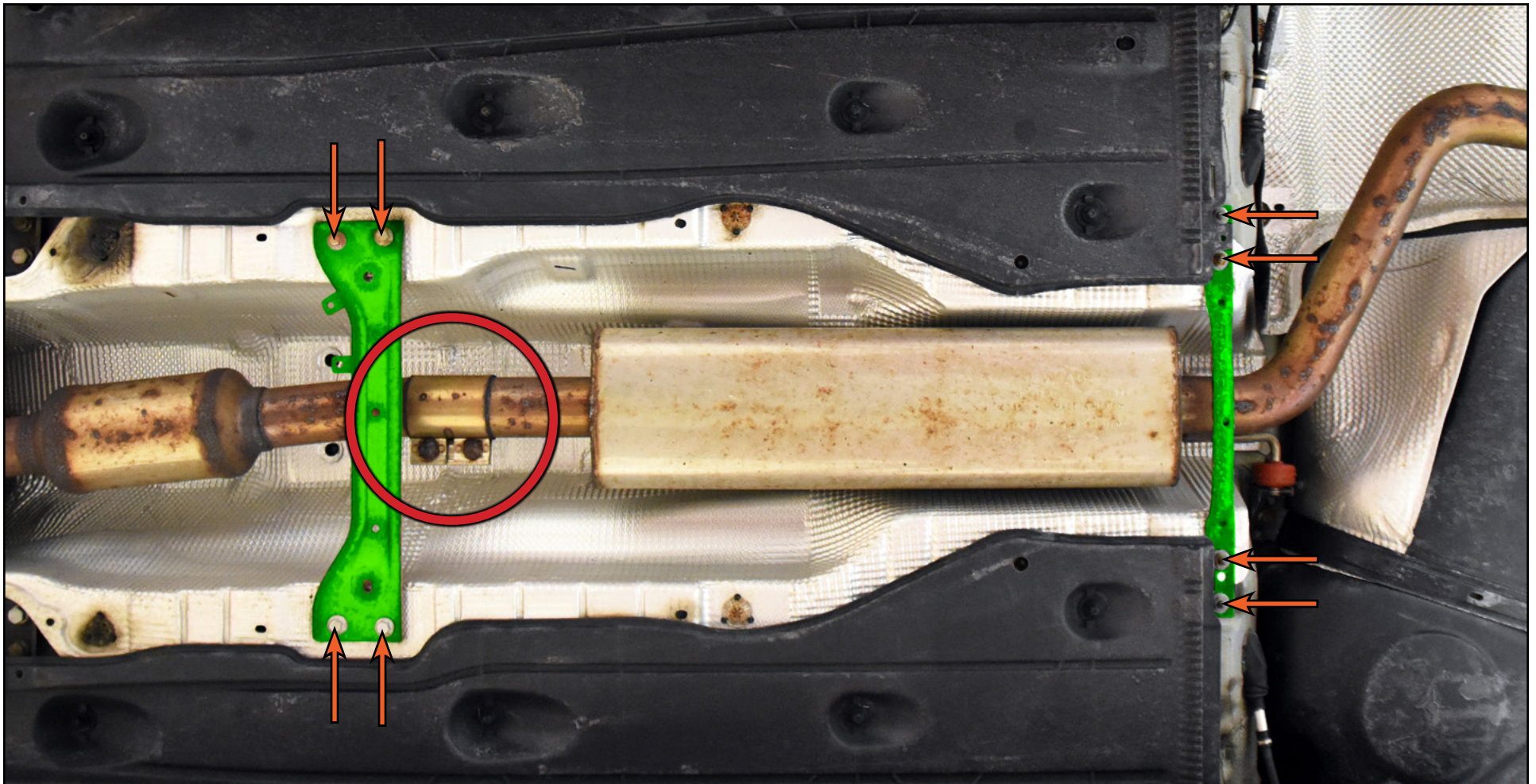


NEVER get underneath a vehicle that is supported only by a jack, and **ALWAYS** make sure that the vehicle is securely supported on jack stands.

REMOVING THE STOCK RESONATOR

Step 1: 13mm Socket & Ratchet

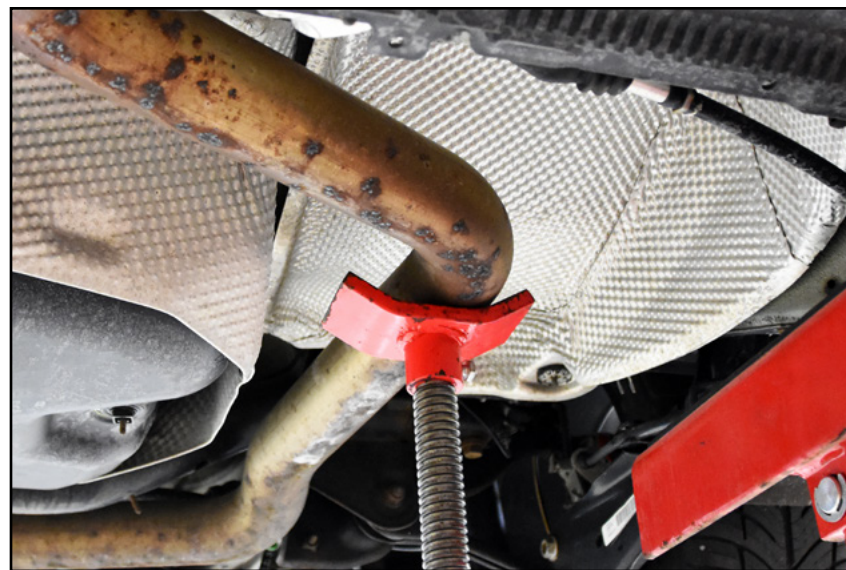
Remove the eight fasteners (arrows) which secure the two tunnel braces (highlighted in **GREEN**) to the vehicle, then remove the braces. Loosen the clamp (circled in **RED**) and slide it forward, onto the downpipe.



REMOVING THE STOCK RESONATOR

Step 2:

Before removing the stock resonator, properly support both ends of the exhaust so that it does not drop and cause damage.



Step 3: Mechanic's Wire -or- Masking Tape

Lift the new resonator delete pipe up against the stock exhaust. It's best to secure the pipes together with something such as masking tape or mechanic's wire while performing this step to free up your hands, and give you all the time you need to make sure that the pipes are properly lined up.



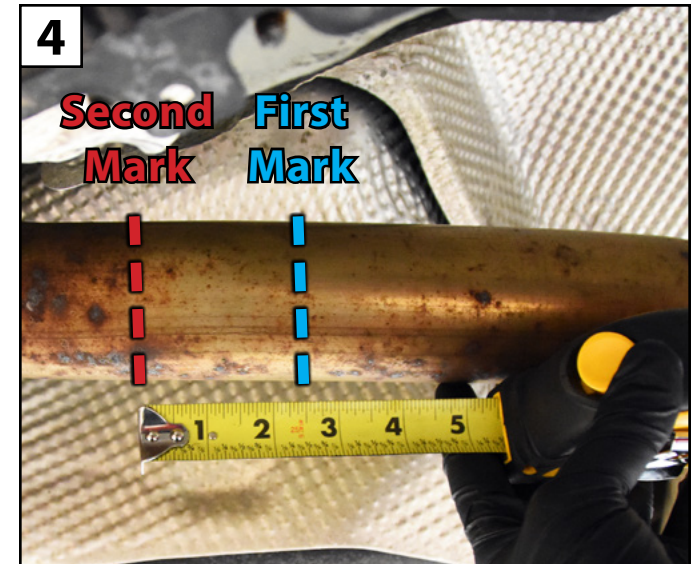
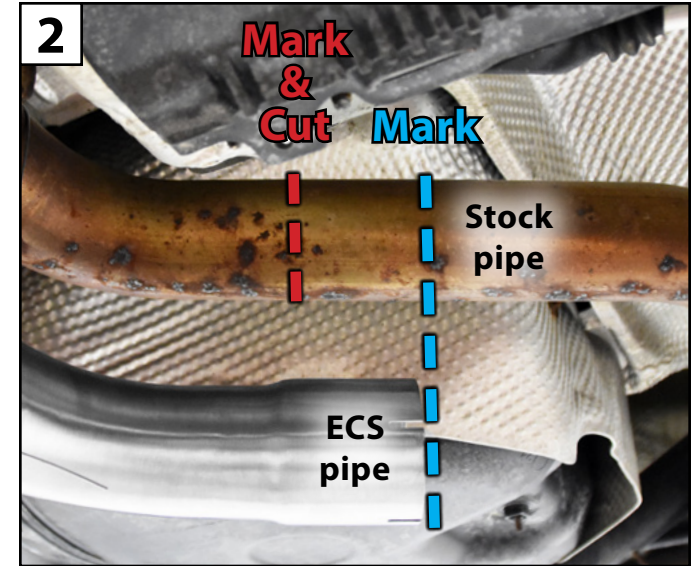
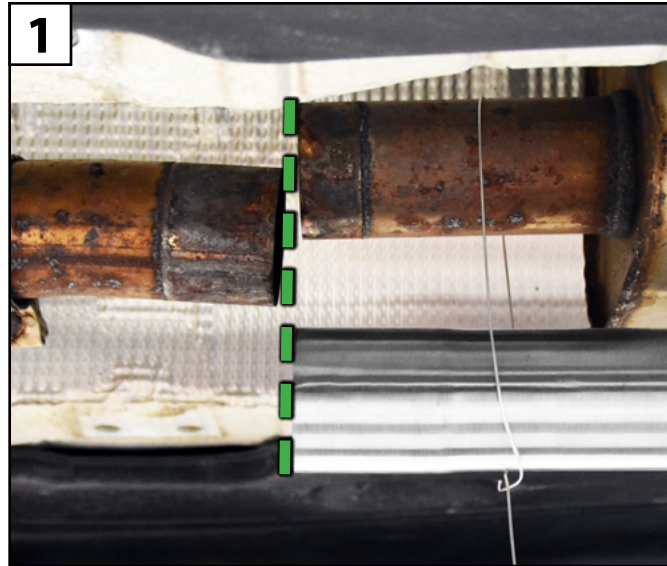
It is absolutely imperative that you take your time here and double check that the pipes are properly aligned. All of your cuts are going to be based off of this alignment, so it's worth taking your time to ensure that it's done right.



REMOVING THE STOCK RESONATOR

Step 4: Marker

- 1) Ensure that the ends of the pipes are properly aligned to one another (**GREEN** line).
- 2) Once the two pipes have been lined up you can draw an imaginary line from the end of the resonator delete pipe up to the stock exhaust (**BLUE** line). Since this pipe has a slip joint, our cut will actually be 2.5" further upstream (**RED** line).
- 3) Using a marker or masking tape, make a line on the stock exhaust where the end of the resonator delete pipe lined up.
- 4) Now we can measure 2.25" upstream from the mark we just made and make a second line all the way around the pipe. **THIS** is where we will be making our cut.



REMOVING THE STOCK RESONATOR

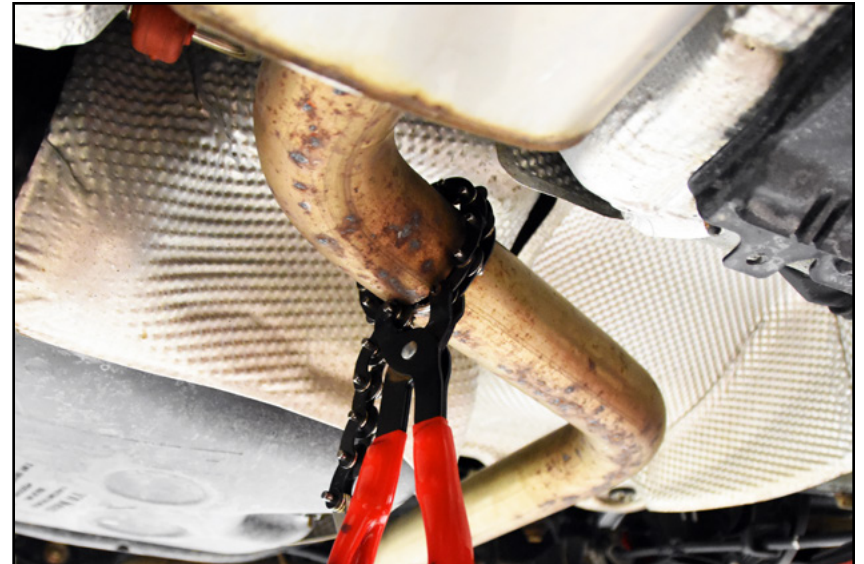
Step 5: Exhaust Hanger Removal Pliers

Support the resonator to prevent it from falling, then remove the resonator hanger rod from the rubber isolator.



Step 6: Exhaust Pipe Cutter -OR- Reciprocating Saw

Cut along the line we made on the previous page, being sure to cut as straight as possible until you cut all the way through the pipe, then remove the resonator from the vehicle.



REMOVING THE STOCK RESONATOR

Step 7: Metal File -or- Die Grinder

Use a metal file or die grinder to remove any burrs from the exhaust pipe that we cut, this will ensure a proper fit and seal once the new pipe is installed.



Step 8:

Compare the stock resonator with the new ECS resonator delete pipe to ensure that the mounting hangers line up, but keep in mind that the resonator delete pipe will be slightly longer overall due to the slip joint.



INSTALLING THE RESONATOR DELETE KIT

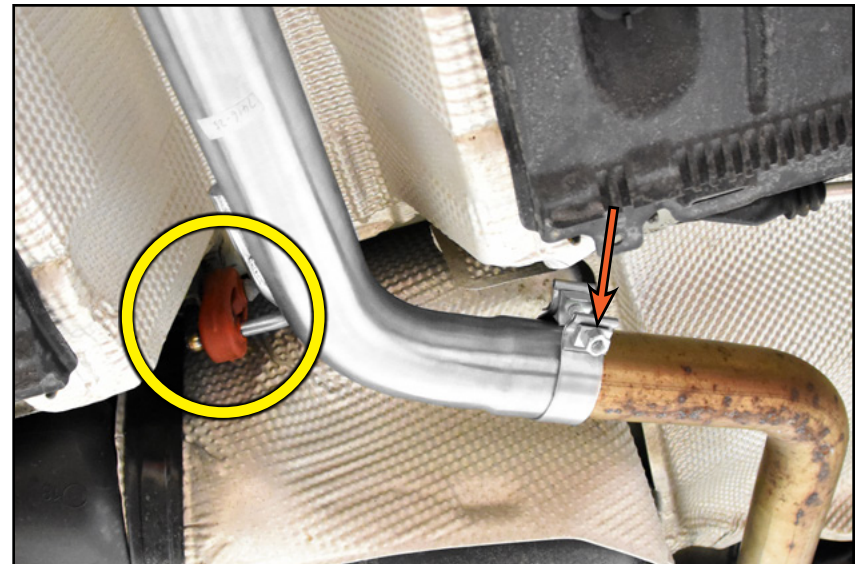
Step 1:

Slide the provided sleeve clamp onto the end of the downpipe as far as it will go.



Step 2:

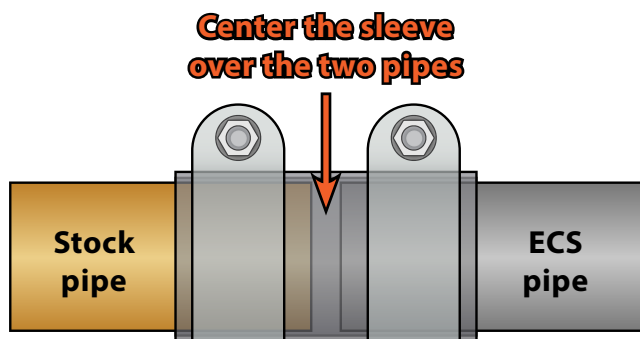
Slide the provided 65mm clamp (arrow) over the end of the new pipe and slide it over the stock exhaust as shown, then rotate the pipe upward and slide the hanger rod into the rubber isolator (circled in YELLOW) as shown.



INSTALLING THE RESONATOR DELETE KIT

Step 3: 15mm Socket, 16mm Socket & Ratchet

Center the sleeve clamp between the resonator delete pipe and the downpipe (shown below), then push system upward and tighten down the sleeve clamp and 65mm clamp. After tightening, the system will settle to a natural rest state.



Step 4: 13mm Socket & Ratchet

Reinstall the two tunnel braces and tighten the fasteners to 20 Nm (15 Ft-lbs).

Congratulations, your installation is complete!



SCHWABEN - BUILD THE ULTIMATE TOOL COLLECTION

At ECS Tuning, we carry a line of high quality Schwaben Tools and Equipment to help you build your ultimate tool collection. Never before has affordability and quality been so closely related. Our entire Schwaben line is subjected to strict in house testing for strength and durability. See what we have to offer and equip your garage without breaking the bank.

Your Resonator Delete Kit installation is complete!



These instructions are provided as a courtesy by ECS Tuning

Proper service and repair procedures are vital to the safe, reliable operation of all motor vehicles as well as the personal safety of those performing the repairs. Standard safety procedures and precautions (including use of safety goggles and proper tools and equipment) should be followed at all times to eliminate the possibility of personal injury or improper service which could damage the vehicle or compromise its safety.

Although this material has been prepared with the intent to provide reliable information, no warranty (express or implied) is made as to its accuracy or completeness. Neither is any liability assumed for loss or damage resulting from reliance on this material. SPECIFICALLY, NO WARRANTY OF MERCHANTABILITY, FITNESS FOR A PARTICULAR PURPOSE OR ANY OTHER WARRANTY IS MADE OR TO BE IMPLIED WITH RESPECT TO THIS MATERIAL. In no event will ECS Tuning, Incorporated or its affiliates be liable for any damages, direct or indirect, consequential or compensatory, arising out of the use of this material.