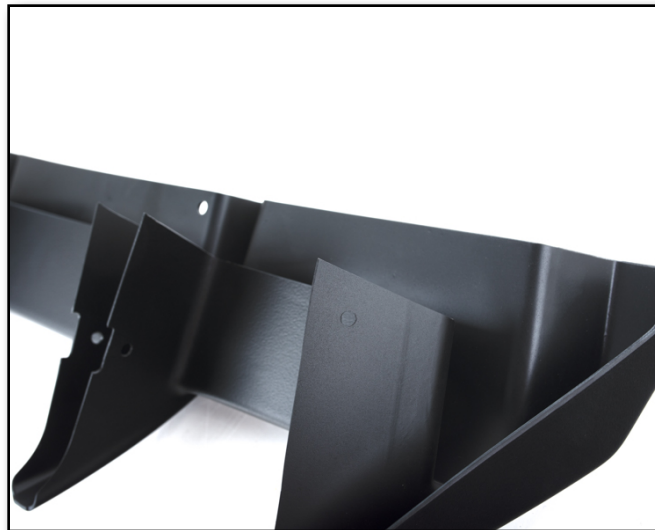




VW MK7.5 GTI Rear Diffuser Add-On Installation Instructions - [ES4034810](#)

Skill Level 1 - Easy



Proper service and repair procedures are vital to the safe, reliable operation of all motor vehicles as well as the personal safety of those performing the repairs. Standard safety procedures and precautions (including use of safety goggles and proper tools and equipment) should be followed at all times to eliminate the possibility of personal injury or improper service which could damage the vehicle or compromise its safety.

INSTALLATION NOTES

- **RH** refers to the *passenger side* of the vehicle.
- **LH** refers to the *driver side* of the vehicle.
- Always use the proper torque specifications.
- If applicable to this installation, torque specifications will be listed throughout the document and at the end as well.
- Please read all of these instructions and familiarize yourself with the complete process **BEFORE** you begin.

GENERAL PREPARATION AND SAFETY INFORMATION

ECS Tuning cares about your health and safety, please read the following safety information. This information pertains to automotive service in general, and while it may not pertain to every job you do, please remember and share these important safety tips.

- Park your car in a safe, well lit, level area.
- Shut the engine off and remove the key from the ignition switch.
- Make sure any remote start devices are properly disabled.
- **ALWAYS** wear safety glasses.
- Make sure the parking brake is applied until the vehicle is safely lifted and supported.
- Whether lifting a vehicle using an automotive lift or a hydraulic jack, be sure and utilize the factory specified lift points.
- Lifting a vehicle in an incorrect location can cause damage to the suspension/running gear.
- **ALWAYS** support the vehicle with jack stands.
- **ALWAYS** read and follow all safety information and warnings for the equipment you are using.



NEVER get underneath a vehicle that is supported only by a jack, and **ALWAYS** make sure that the vehicle is securely supported on jack stands.

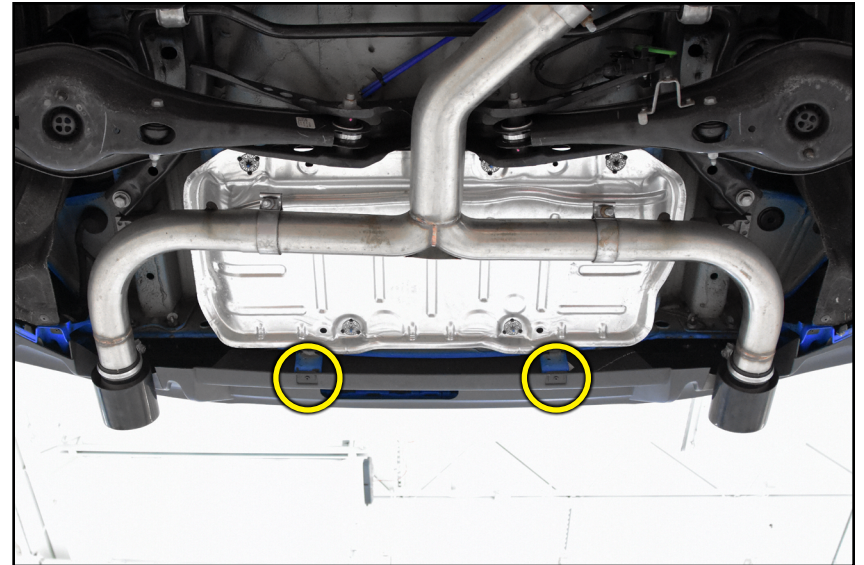
INSTALLING THE REAR DIFFUSER ADD-ON

Step 1: T15 Torx

First, remove the two small T15 Torx plastic screws from the rectangle-shaped clips (circled in **YELLOW**) on the underside of the stock rear valance, then pull down to pop the clips free from the valance.

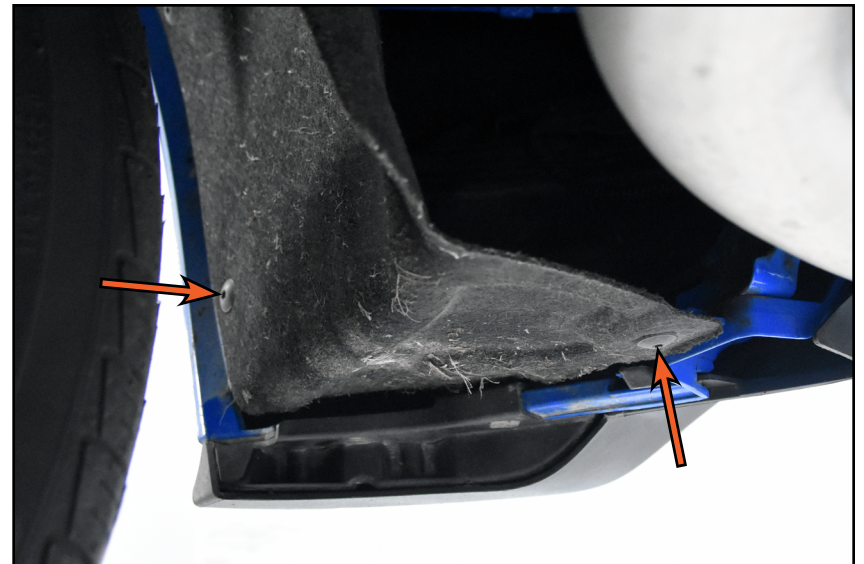


While it is completely possible to install this diffuser add-on with the valance left installed, we have opted to remove the valance to make installation easier and to provide better clarity for photos.



Step 2: T25 Torx

Remove the two screws (arrows) which secures the end of each fender liner to the bumper.



INSTALLING THE REAR DIFFUSER ADD-ON

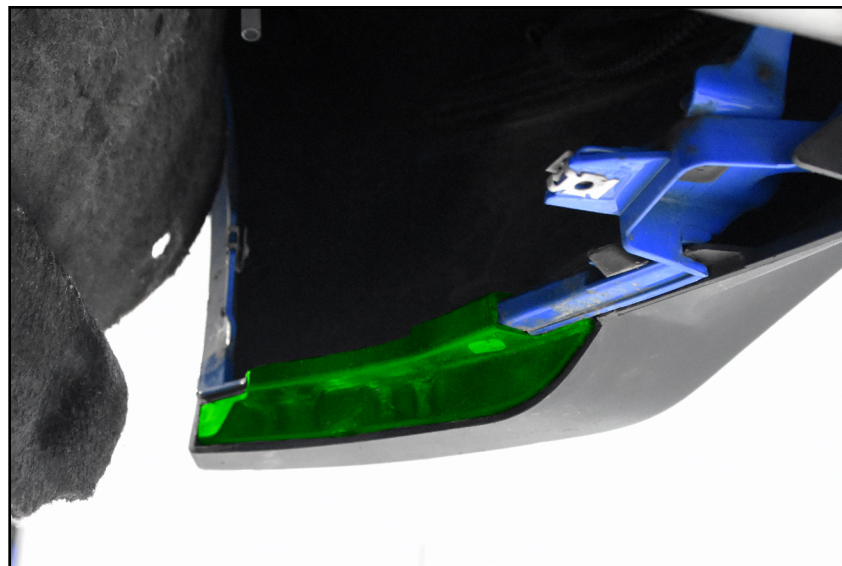
Step 3: T25 Torx

Gently pull the fender liner back to expose the two screws (arrows) which secure the valance to the bumper on either side. Remove the screws.



Step 4:

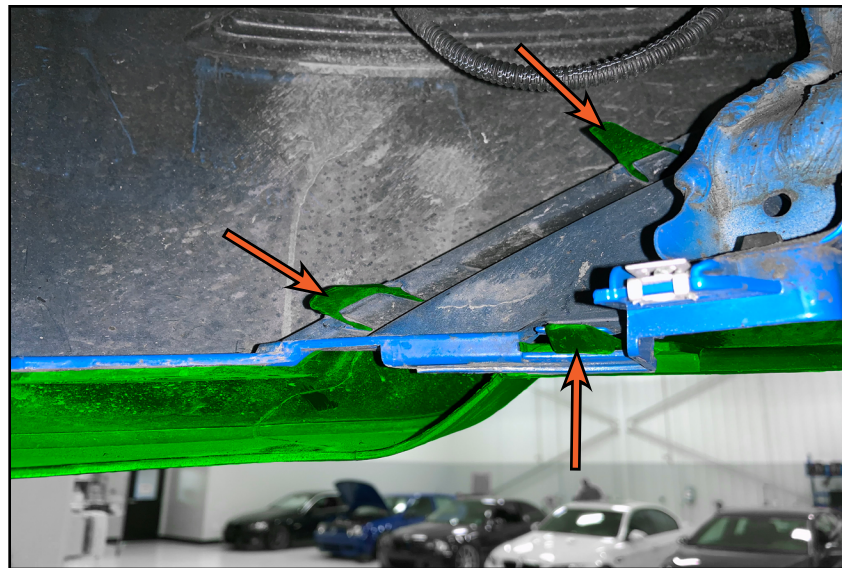
Pull the valance retainer (highlighted in **GREEN**) free from the vehicle on either side.



INSTALLING THE REAR DIFFUSER ADD-ON

Step 5:

Pop the three mounting tabs (arrows) on the valance (highlighted in **GREEN**) free from the bumper on either side.



Step 6:

Firmly pull the rear valance away from the bumper, starting on the sides and slowly working your way towards the center until it pops free.



Removing the stock rear valance will take a good bit of force. Place one hand on the rear bumper to brace it, then grip the valance at the first clip and firmly pull back until the clip pops free from the bumper. Repeat this process with each clip until the valance comes free.



INSTALLING THE REAR DIFFUSER ADD-ON

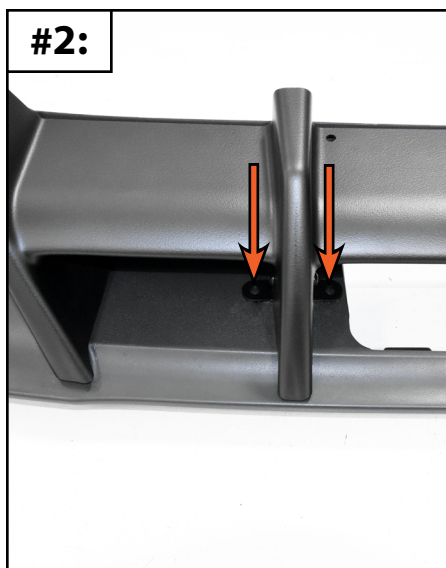
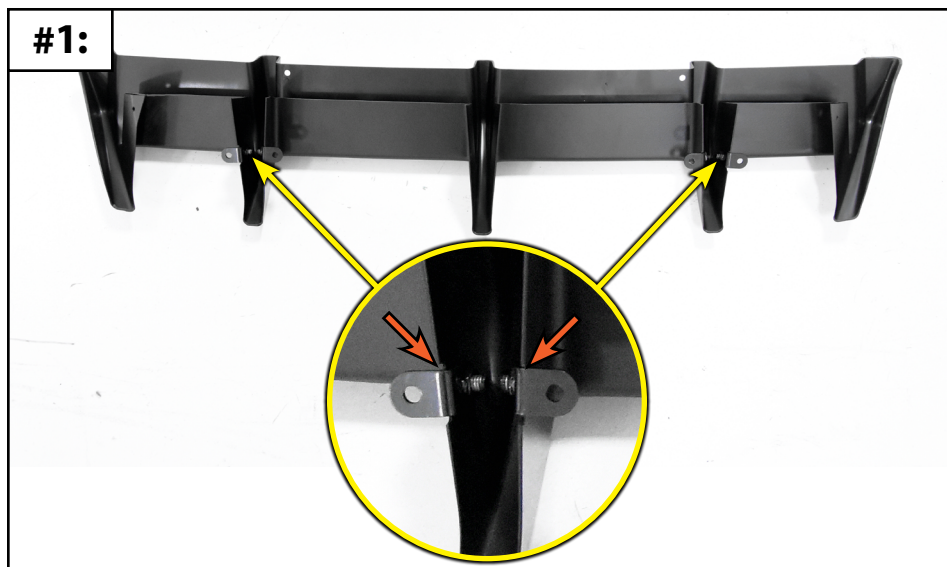
Step 7:

Loosely install the four mounting brackets into the diffuser add-on using the provided M6 x 10mm screws (arrows in **Photo #1**).

Slide the diffuser onto the stock valance as shown and adjust until you are satisfied with the fitment, then mark the valance through each of the mounting bracket holes (arrows in **Photo #2**).

Remove the diffuser from the rear valance. Drill a 1/2" hole in the stock valance for each of the four mounting brackets (**Photo #3**).

Slide the provided rubber riv-nuts into each of the four 1/2" holes as shown (arrows in **Photo #4**).



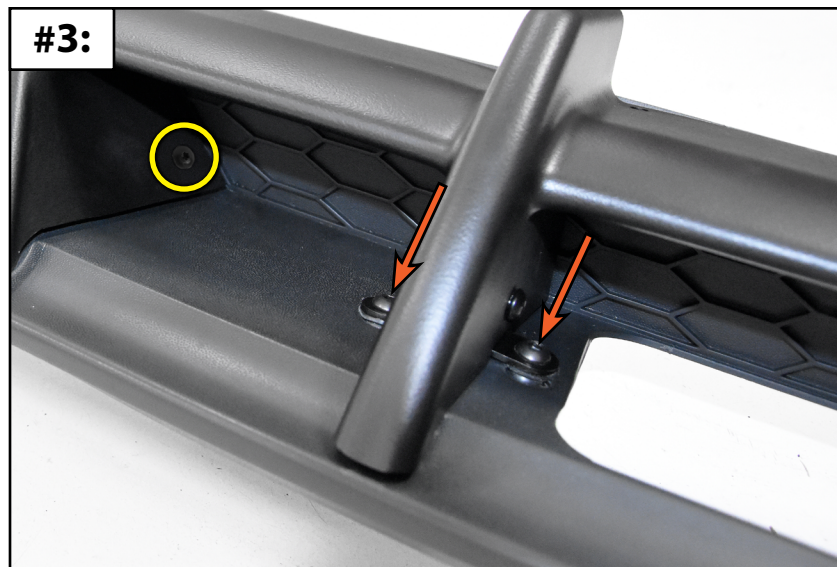
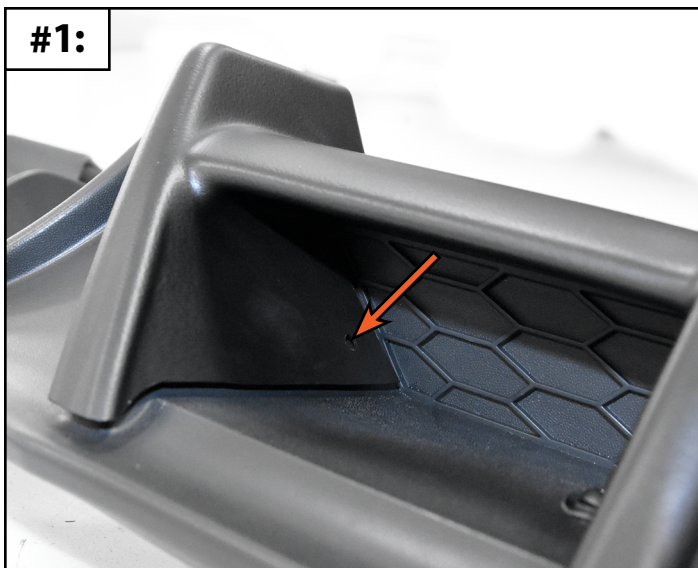
INSTALLING THE REAR DIFFUSER ADD-ON

Step 8:

Slide the diffuser onto the stock valance again. Mark the valance through each of the two outer mounting holes (arrow in **Photo #1**).

Remove the diffuser from the rear valance. Drill a $\frac{1}{8}$ " hole in the stock valance for each of the two outer mounting screws (**Photo #2**).

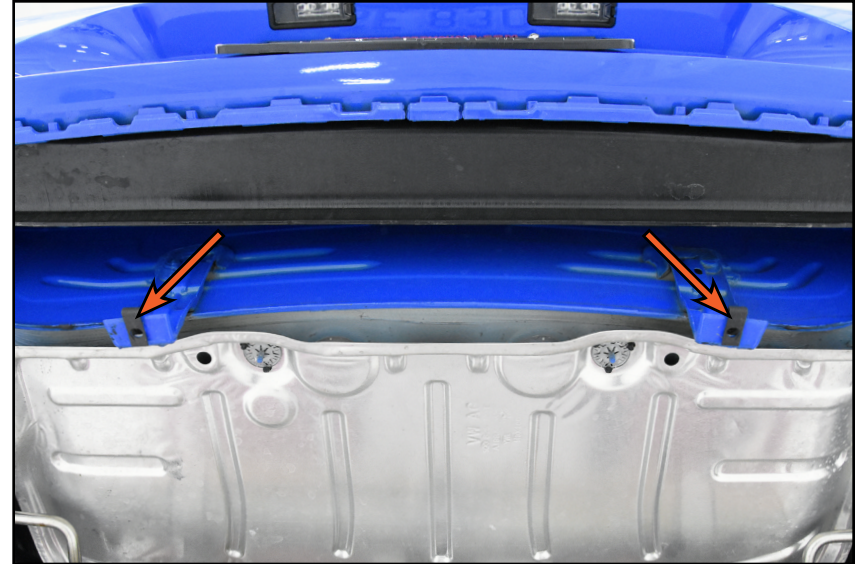
Slide the diffuser onto the stock valance one final time, then install the provided M6 x 20mm screws into the rubber riv-nuts (arrows in **Photo #3**). As you tighten the screws the riv-nuts will expand and draw the diffuser in flush. Using a $\frac{1}{4}$ " ratchet, install the two provided self-tapping screws (circled in **YELLOW** in **Photo #3**) into the two outer mounting holes. Tighten the screws until they contact the diffuser, then give them an additional $\frac{1}{4}$ turn.



INSTALLING THE REAR DIFFUSER ADD-ON

Step 9:

Install the provided clip nuts (arrows) into the two factory mounting brackets.



Step 10: T25 Torx

Carefully lift the valance back into place and firmly push inward to pop the mounting tabs back into the bumper. Reinstall the valance retainers, valance screws, and fender liners.



INSTALLING THE REAR DIFFUSER ADD-ON

Step 11: 4mm Hex (Allen)

With the valance fully installed you can push the diffuser inward until flush, causing the mounting brackets to rotate slightly, before fully tightening the mounting bracket screws (arrow).



Step 12: 4mm Hex (Allen)

Slide the last two M6 x 20mm screws (arrows) through the diffuser and into the clip nuts. Tighten the screws until they contact the diffuser, then give them an additional ¼ turn.



Congratulations, your installation is complete!

Your Rear Diffuser Add-On installation is complete!



These instructions are provided as a courtesy by ECS Tuning

Proper service and repair procedures are vital to the safe, reliable operation of all motor vehicles as well as the personal safety of those performing the repairs. Standard safety procedures and precautions (including use of safety goggles and proper tools and equipment) should be followed at all times to eliminate the possibility of personal injury or improper service which could damage the vehicle or compromise its safety.

Although this material has been prepared with the intent to provide reliable information, no warranty (express or implied) is made as to its accuracy or completeness. Neither is any liability assumed for loss or damage resulting from reliance on this material. SPECIFICALLY, NO WARRANTY OF MERCHANTABILITY, FITNESS FOR A PARTICULAR PURPOSE OR ANY OTHER WARRANTY IS MADE OR TO BE IMPLIED WITH RESPECT TO THIS MATERIAL. In no event will ECS Tuning, Incorporated or its affiliates be liable for any damages, direct or indirect, consequential or compensatory, arising out of the use of this material.