



## BMW E39 540i M62TU Intake System Installation



Proper service and repair procedures are vital to the safe, reliable operation of all motor vehicles as well as the personal safety of those performing the repairs. Standard safety procedures and precautions (including use of safety goggles and proper tools and equipment) should be followed at all times to eliminate the possibility of personal injury or improper service which could damage the vehicle or compromise its safety.

## INTRODUCTION

### Turner Motorsport BMW E39 540i M62TU Intake System

Installing our BMW E39 540i M62TU intake system is an enjoyable project that an experienced technician could perform in an hour or less, plan accordingly based on your own experience level. is available in two variants:

**#1:** For use w/the stock 3.0" MAF sensor housing.

**#2:** For use w/the new 4.0" MAF sensor housing.

Before you begin, read and familiarize yourself with these instructions and make sure you have all the required tools on hand. Thank you for purchasing our intake system, we appreciate your business!

**#1:**



M62TU Intake System w/3.0" MAF

**#2:**

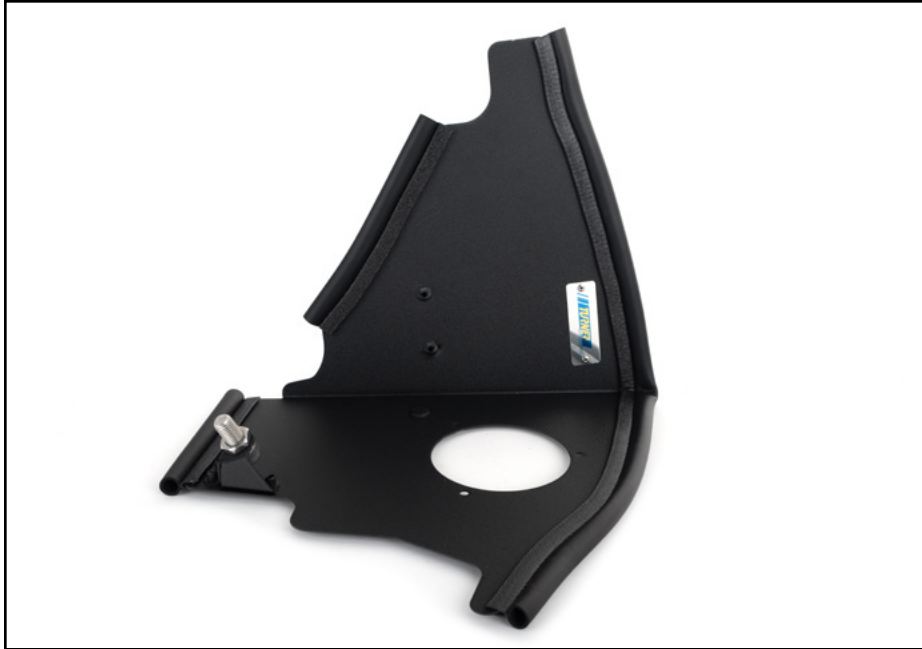


M62TU Intake System w/4.0" MAF

## TABLE OF CONTENTS

Kit Contents (w/3.0" MAF) .....	<a href="#">pg.3</a>
Kit Contents (w/4.0" MAF) .....	<a href="#">pg.4</a>
Installation and Safety Information .....	<a href="#">pg.5</a>
Removing the Stock Intake System .....	<a href="#">pg.6</a>
Installing the New Intake System .....	<a href="#">pg.7</a>

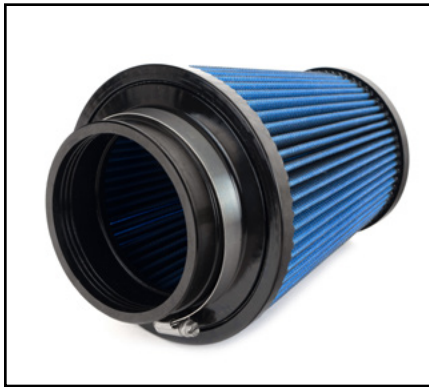
## KIT CONTENTS (WITH 3.0" MAF)



Heat shield assembly



3.0" silicone intake hose



4.0" air filter w/clamp



4.0" air filter to 3.0" MAF sensor housing adapter



3.0" silicone coupler w/clamps

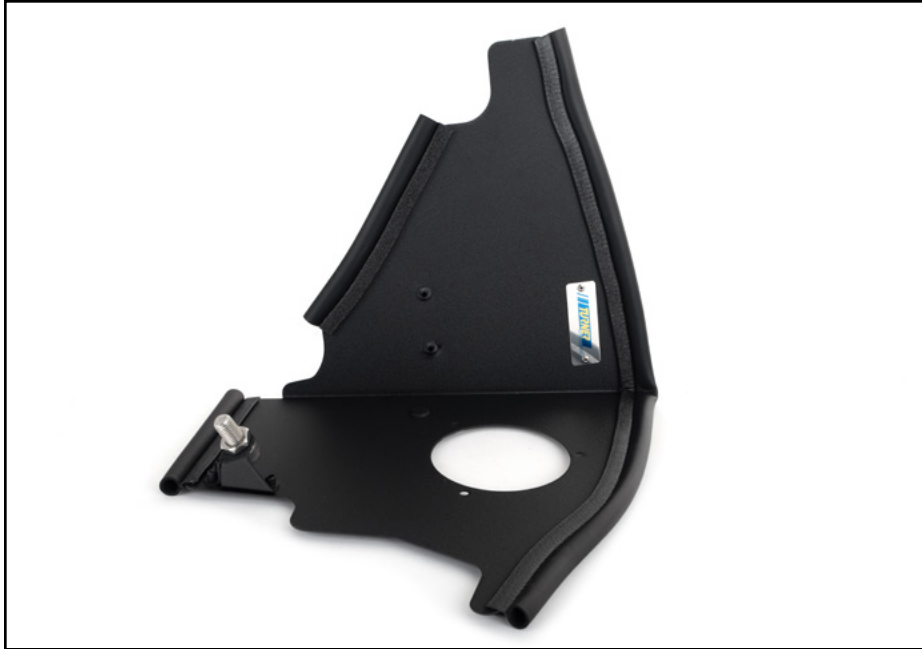


Air filter adapter screws

Installation hardware and vent line adapters



## KIT CONTENTS (WITH 4.0" MAF)



Heat shield assembly



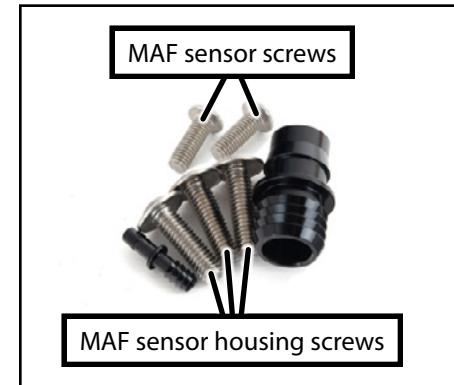
4.0" silicone intake hose



4.0" air filter w/clamp



4.0" MAF sensor housing/adaptor


Installation hardware and  
vent line adapters

## INSTALLATION NOTES

- **RH** refers to the *passenger side* of the vehicle.
- **LH** refers to the *driver side* of the vehicle.
- Always use the proper torque specifications.
- If applicable to this installation, torque specifications will be listed throughout the document and at the end as well.
- Please read all of these instructions and familiarize yourself with the complete process **BEFORE** you begin.

## GENERAL PREPARATION AND SAFETY INFORMATION

Turner Motorsport cares about your health and safety, please read the following safety information. This information pertains to automotive service in general, and while it may not pertain to every job you do, please remember and share these important safety tips.

- Park your car in a safe, well lit, level area.
- Shut the engine off and remove the key from the ignition switch.
- Make sure any remote start devices are properly disabled.
- **ALWAYS** wear safety glasses.
- Make sure the parking brake is applied until the vehicle is safely lifted and supported.
- Whether lifting a vehicle using an automotive lift or a hydraulic jack, be sure and utilize the factory specified lift points.
- Lifting a vehicle in an incorrect location can cause damage to the suspension/running gear.
- **ALWAYS** support the vehicle with jack stands.
- **ALWAYS** read and follow all safety information and warnings for the equipment you are using.



**NEVER** get underneath a vehicle that is supported only by a jack, and **ALWAYS** make sure that the vehicle is securely supported on jack stands.

## REMOVING THE STOCK INTAKE SYSTEM

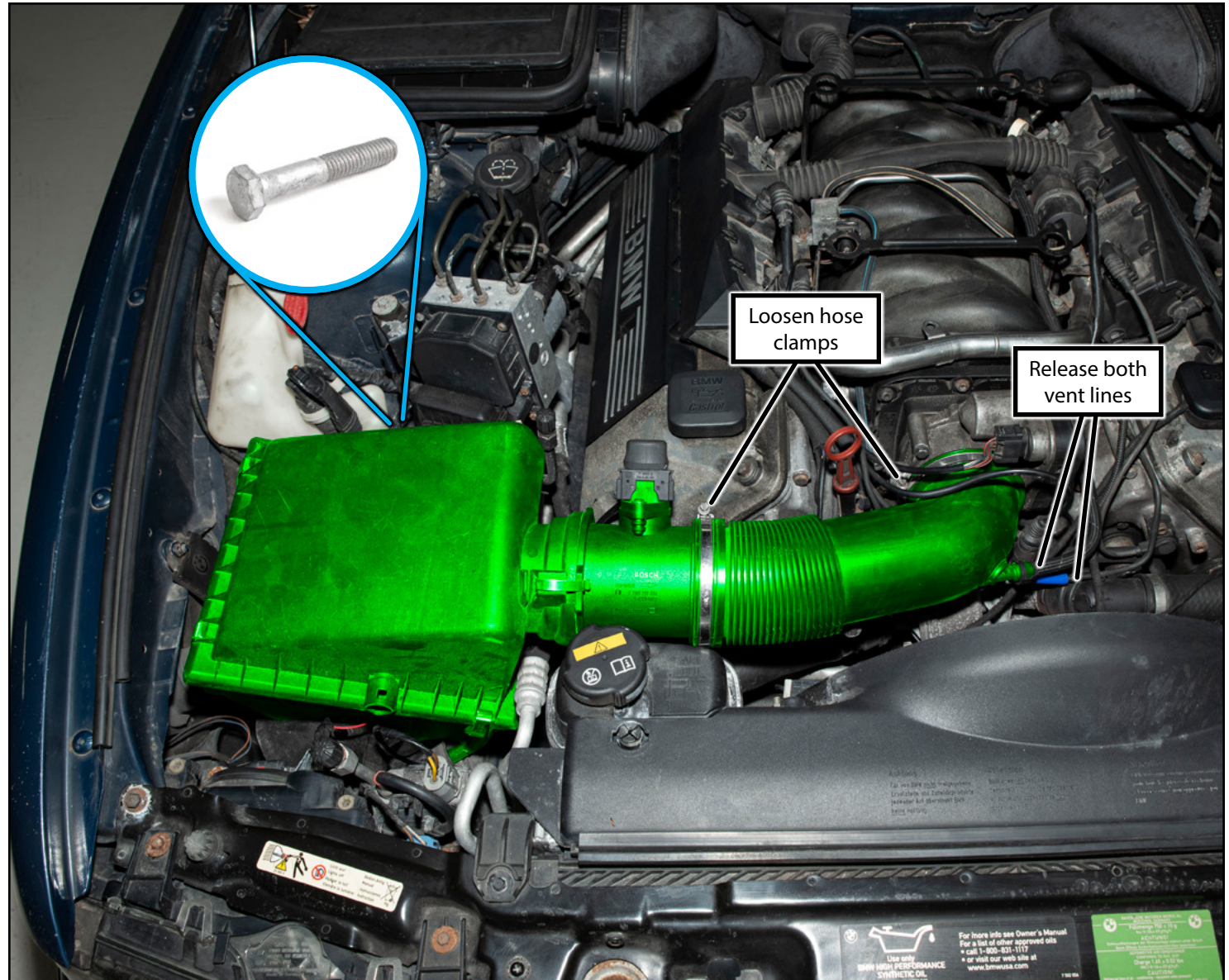
### Step 1:

In order to remove the stock intake system you'll need to disconnect the two breather pipes from the intake tube, located near the throttle body (arrows in the photo on the right).

Loosen the two hose clamps on the intake tube. Disconnect the vent lines from the intake tube near the throttle body.

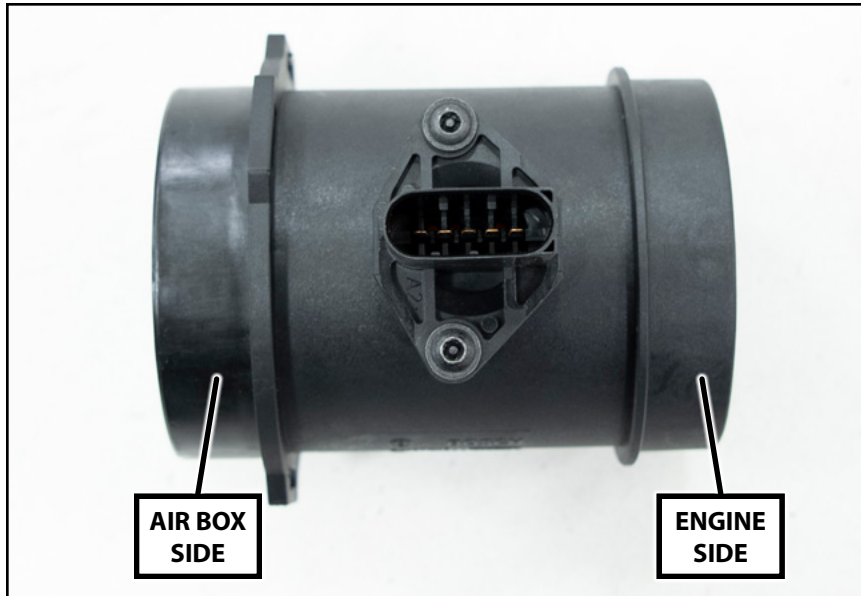
Remove the 10mm bolt which secures the air box in place, located between the air box and the ABS pump (**BLUE** inset photo).

Remove the air box and intake tube (highlighted in **GREEN** in the photo on the right) from the engine bay. You'll need to lift up on the air box to pop it free from its mounting grommet.



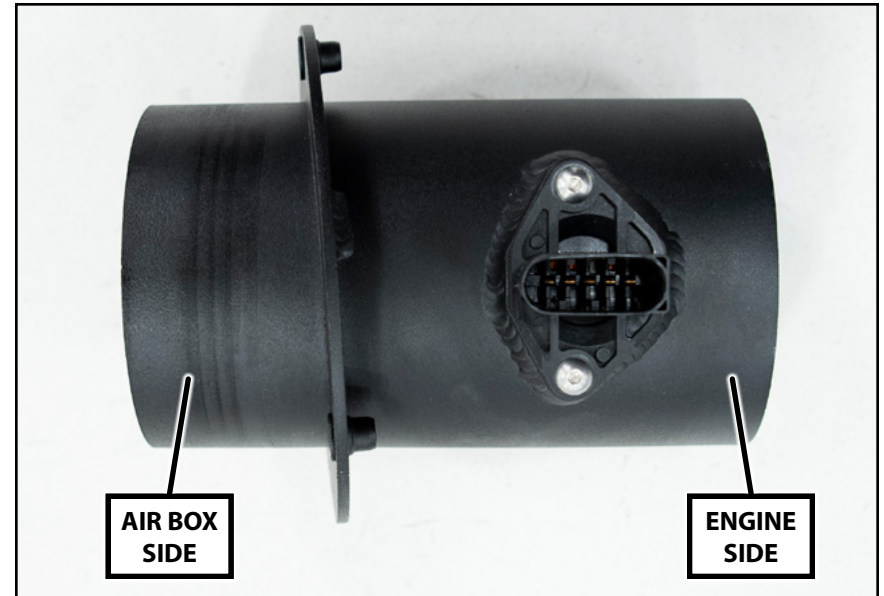


## REMOVING THE STOCK INTAKE SYSTEM



### Intake systems with a 3.0" MAF sensor

- You will need to:
  1. Remove the MAF sensor housing from the stock air box.
  2. This sensor will be transferred over to the new intake system.
  3. Please proceed to [Page 8](#).



### Intake systems with a 4.0" MAF sensor

- You will need to:
  1. Remove the MAF sensor from the housing
    - *This requires specialized 5-point tamper resistant star bits. You could also use pliers or vice grips to grab the heads of the screws and remove them.*
  2. Install the MAF sensor into the new 4.0" MAF sensor housing/adaptor using the two supplied screws.
  3. Please proceed to [Page 8](#).

## INSTALLING THE NEW INTAKE SYSTEM

### Step 1:

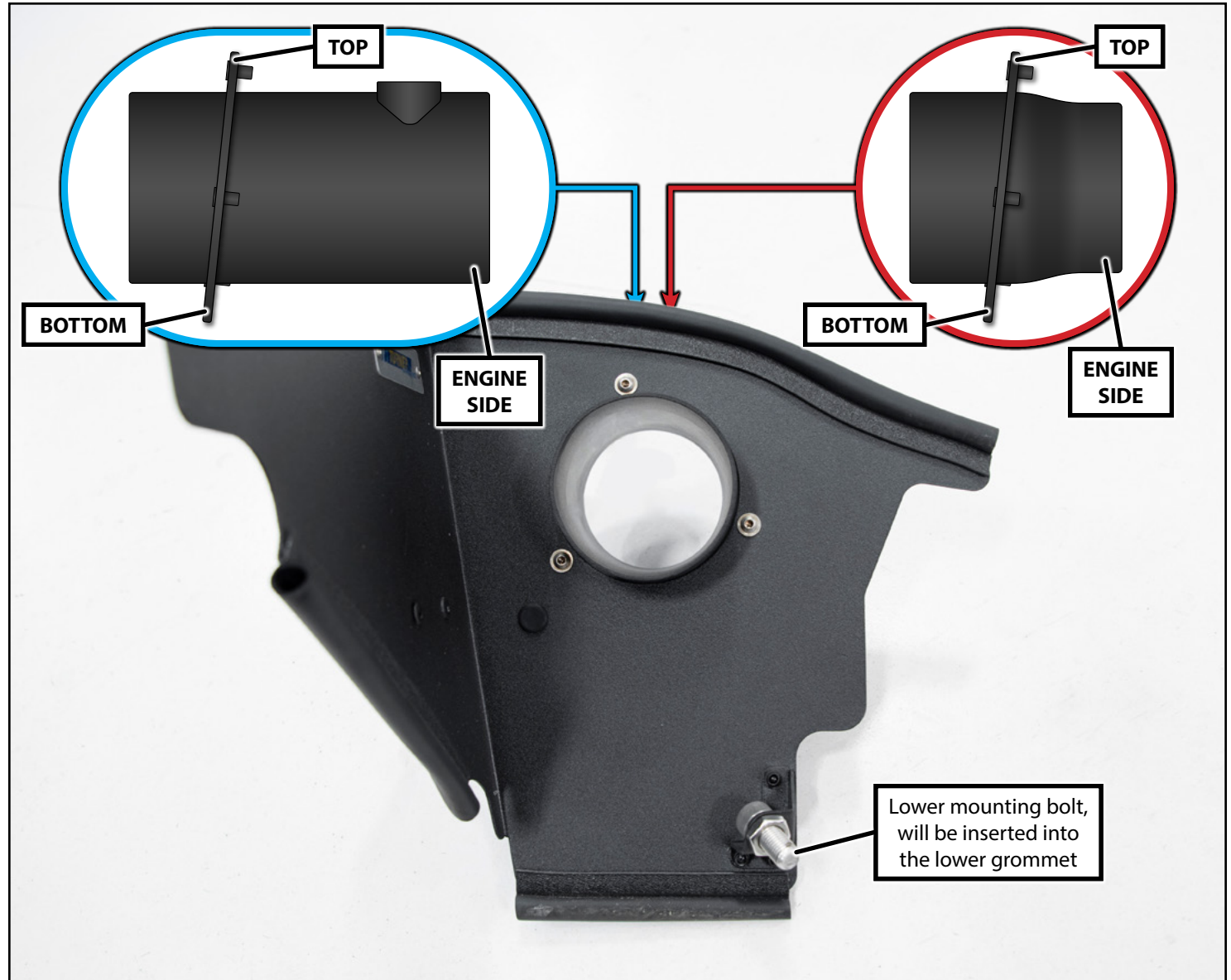
#### FOR 4.0" MAF ONLY:

Transfer the MAF sensor into the new 4.0" MAF sensor housing/adapter as outlined on [Page 7](#).

#### FOR 3.0" or 4.0" MAF:

Install the air filter adapter into the heat shield using the supplied hardware. Be sure to orient the adapter as outlined in the photos on the right (3.0" MAF shown in the **RED** inset photo, 4.0" MAF shown in the **BLUE** inset photo).

Please note the mounting grommet location near the bottom of the heat shield. This grommet will need to be transferred from the stock air box over to the new heat shield before installing it into the engine bay.

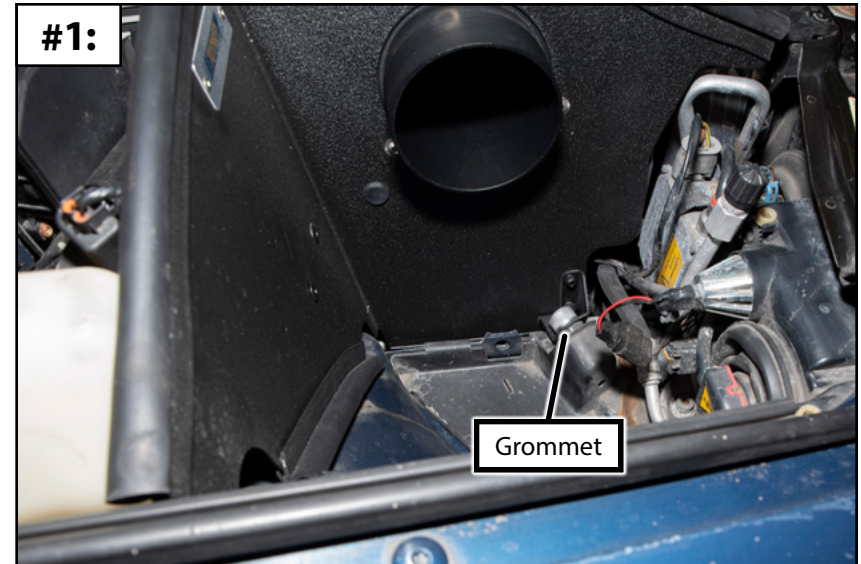




## INSTALLING THE NEW INTAKE SYSTEM

### Step 2: 4mm Hex (Allen)

Using the **Photo #1** and **Photo #2** for reference, install the heat shield into the engine bay. Be sure to line up the rubber grommet with the cavity located just behind the RH headlight. Use the two supplied screws to secure the heat shield to the RH strut tower (arrows in **Photo #2**).



## INSTALLING THE NEW INTAKE SYSTEM

### Step 3:

Using the photos on the right for reference, install the two supplied vent line adapters into the silicone intake hose. These are a tight fit inside the silicone, so no clamps are required.

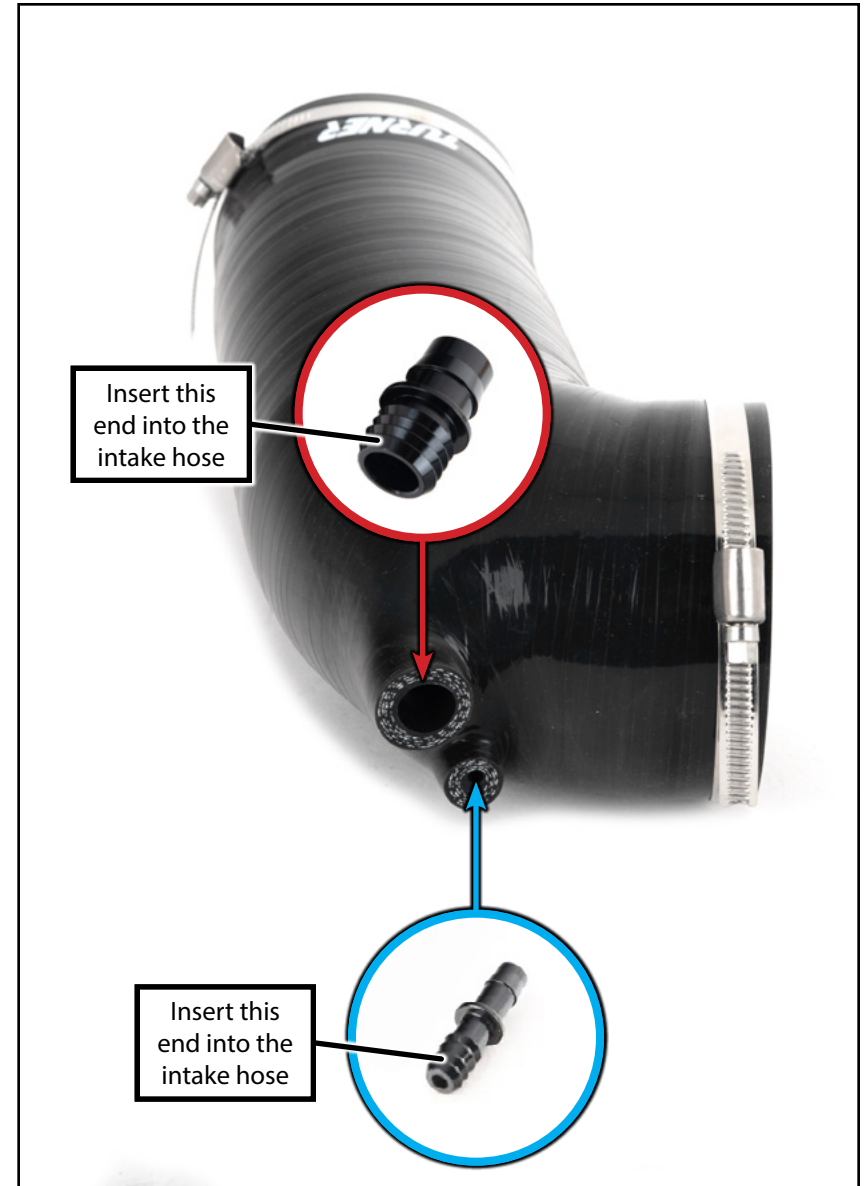


#### Intake systems with a 3.0" MAF sensor

- Proceed to [Page 11](#).

#### Intake systems with a 4.0" MAF sensor

- Skip ahead to [Page 12](#).





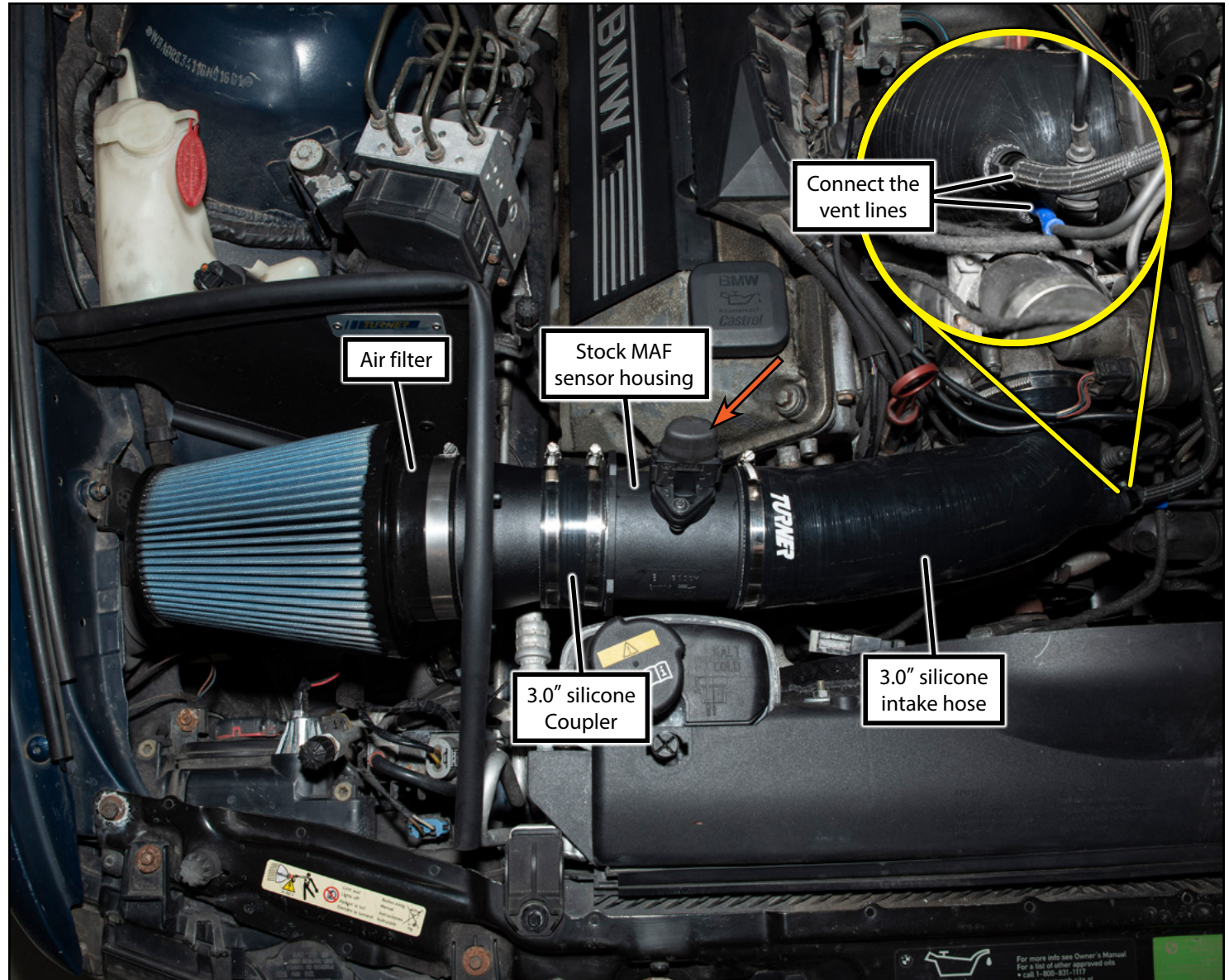
## INSTALLING THE NEW INTAKE SYSTEM (w/3.0" MAF)

### Step 4:

Assemble the remaining intake system components as outlined in the photo on the right. Be sure to reconnect the MAF sensor wiring harness (**ORANGE** arrow in the photo on the right) and connect the two vent lines to the adapters we installed on the previous page (**YELLOW** inset photo).

Adjust the system as needed for desired fitment, then tighten down all of the hose clamps until snug.

***Your intake system installation is complete!***





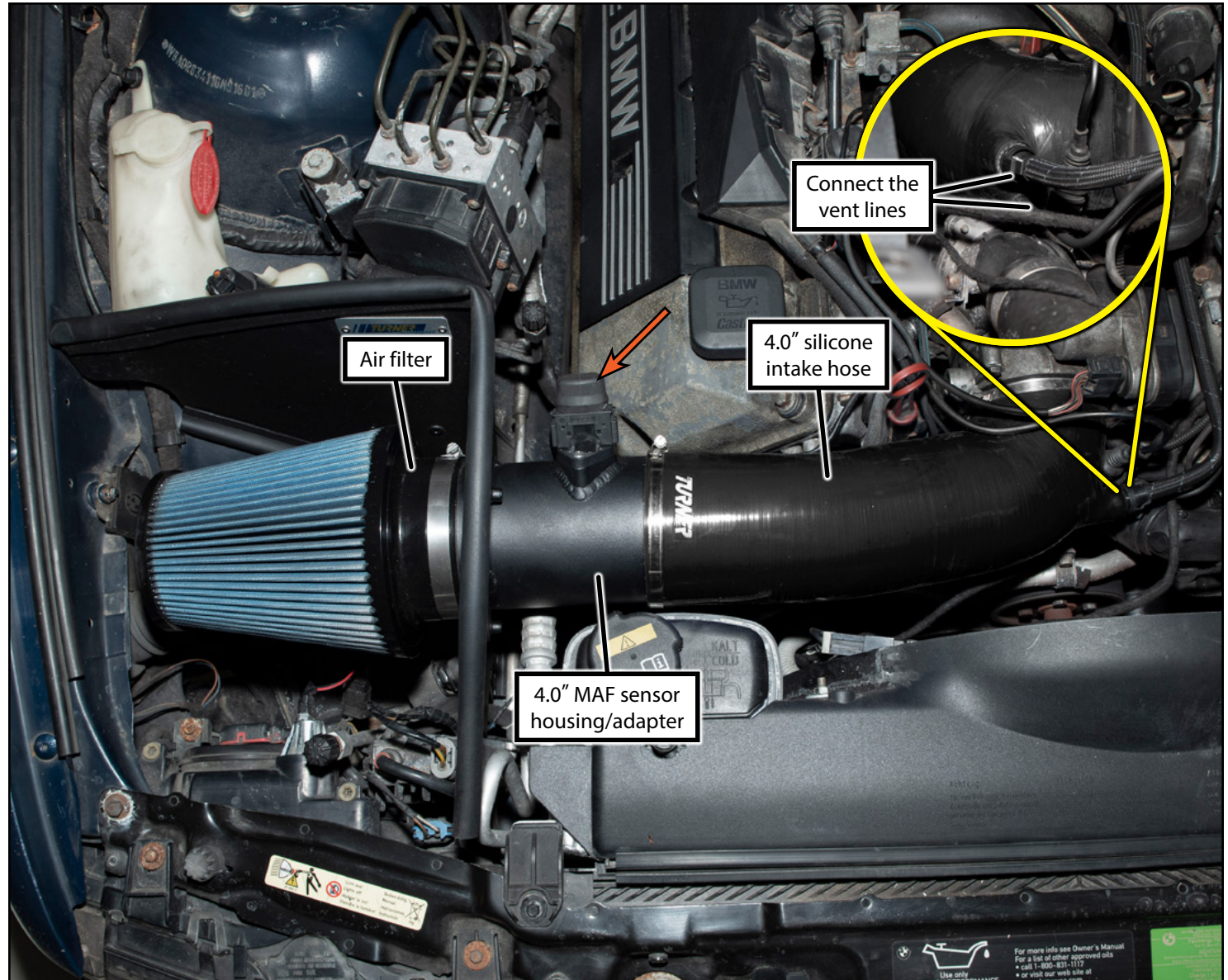
## INSTALLING THE NEW INTAKE SYSTEM (w/4.0" MAF)

### Step 4:

Assemble the remaining intake system components as outlined in the photo on the right. Be sure to reconnect the MAF sensor wiring harness (**ORANGE** arrow in the photo on the right) and connect the two vent lines to the adapters we installed on the previous page (**YELLOW** inset photo).

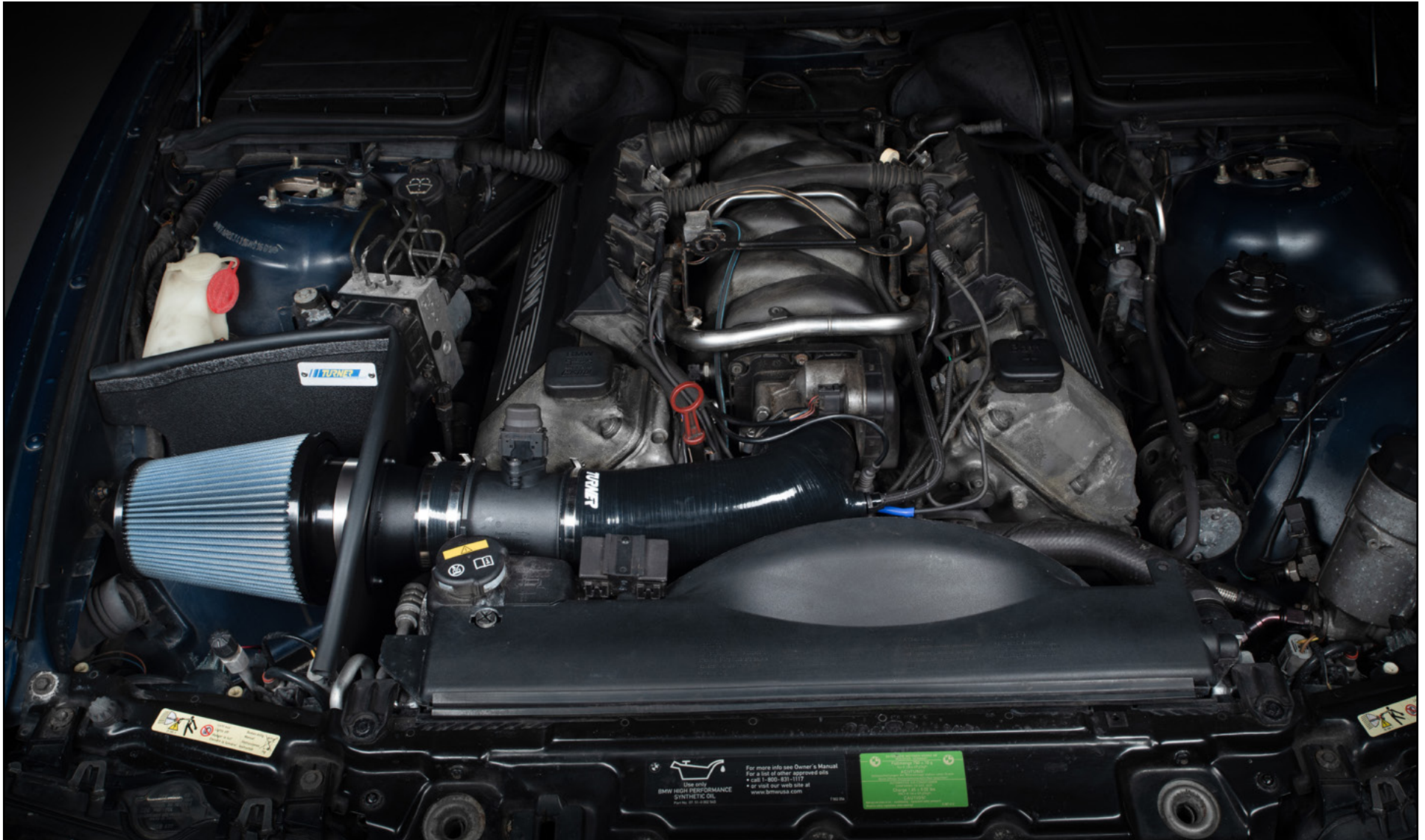
Adjust the system as needed for desired fitment, then tighten down all of the hose clamps until snug.

***Your intake system installation is complete!***





## Your Intake System installation is complete!



### These instructions are provided as a courtesy by Turner Motorsport

Proper service and repair procedures are vital to the safe, reliable operation of all motor vehicles as well as the personal safety of those performing the repairs. Standard safety procedures and precautions (including use of safety goggles and proper tools and equipment) should be followed at all times to eliminate the possibility of personal injury or improper service which could damage the vehicle or compromise its safety.

Although this material has been prepared with the intent to provide reliable information, no warranty (express or implied) is made as to its accuracy or completeness. Neither is any liability assumed for loss or damage resulting from reliance on this material. SPECIFICALLY, NO WARRANTY OF MERCHANTABILITY, FITNESS FOR A PARTICULAR PURPOSE OR ANY OTHER WARRANTY IS MADE OR TO BE IMPLIED WITH RESPECT TO THIS MATERIAL. In no event will Turner Motorsport, Incorporated or its affiliates be liable for any damages, direct or indirect, consequential or compensatory, arising out of the use of this material.