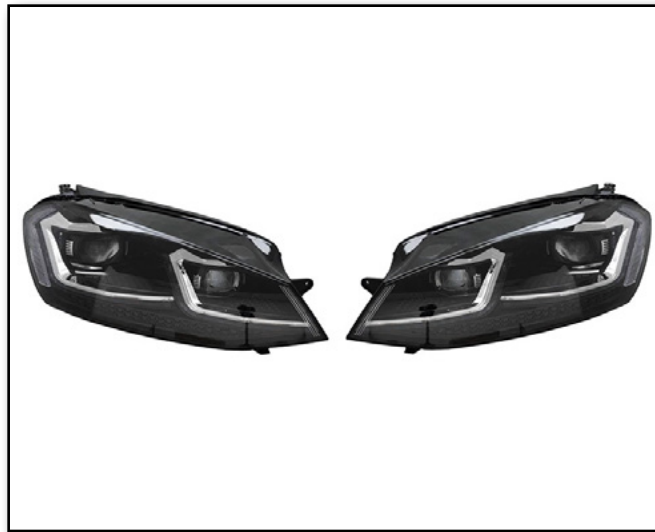




## VW MK7 Golf Helix MK7.5 Style Headlights Installation Instructions - [Click HERE to shop](#)



## TABLE OF CONTENTS

Required Tools and Equipment.....	<a href="#">pg.3</a>
Shop Supplies and Materials.....	<a href="#">pg.4</a>
Installation and Safety Information.....	<a href="#">pg.5</a>
Project Overview.....	<a href="#">pg.6</a>
Removing the Original Headlights.....	<a href="#">pg.7</a>
Installing the New Headlights.....	<a href="#">pg.16</a>
Schwaben Tools.....	<a href="#">pg.22</a>

## AVAILABLE KITS



Black Trim



Chrome Trim



Red Trim

## REQUIRED TOOLS

Note: The tools required for each step will be listed by the step number throughout these instructions.

### Standard Automotive Tools

- Protecta-Sockets (for lug nuts)..... [ES#2221243](#)
- **3/8" Drive Ratchet**..... [ES#2765902](#)
- 3/8" Drive Torque Wrench..... [ES#2221245](#)
- 3/8" Drive Deep and Shallow Sockets..... [ES#2763772](#)
- **3/8" Drive Extensions** ..... [ES#2804822](#)
- **Hydraulic Floor Jack** ..... [ES#240941](#)
- **Torx Drivers and Sockets** ..... [ES#11417/8](#)
- 1/2" Drive Deep and Shallow Sockets..... [ES#2839106](#)
- 1/2" Drive Ratchet
- 1/2" Drive Extensions
- 1/2" Drive Torque Wrench..... [ES#2221244](#)
- 1/2" Drive Breaker Bar ..... [ES#2776653](#)
- Bench Mounted Vise
- Crows Foot Wrenches
- Hook and Pick Tool Set ..... [ES#2778980](#)

### Required For This Install

- **1/4" Drive Ratchet**..... [ES#2823235](#)
- 1/4" Drive Deep and Shallow Sockets ..... [ES#2823235](#)
- **1/4" Drive Extensions**..... [ES#2823235](#)
- Plier and Cutter Set..... [ES#2804496](#)
- **Flat and Phillips Screwdrivers** ..... [ES#2225921](#)
- **Jack Stands** ..... [ES#2763355](#)
- Ball Pein Hammers
- Pry Bar Set..... [ES#1899378](#)
- Electric/Cordless Drill
- Wire Strippers/Crimpers
- Drill Bits
- Punch and Chisel Set
- Hex Bit (Allen) Wrenches and Sockets ..... [ES#11420](#)
- Thread Repair Tools ..... [ES#1306824](#)
- Open/Boxed End Wrench Set ..... [ES#2765907](#)

### Available On Our Website

### Specialty Tools

- **Protecta-Sockets (for lug nuts)** ..... [ES#2221243](#)

## SHOP SUPPLIES AND MATERIALS

**Standard Shop Supply Recommendations:** We recommend that you have a standard inventory of automotive shop supplies before beginning this or any automotive repair procedure. The following list outlines the basic shop supplies that we like to keep on hand. Shop supplies with a hyperlink are available on our website.

- Hand Cleaner/Degreaser - [Click Here](#)
- Pig Mats - for protecting your garage floor and work area from spills and stains - [Click Here](#)
- Spray detailer - for rapid cleaning of anything that comes into contact with your paint such as brake fluid - [Click Here](#)
- Micro Fiber Towels - for cleaning the paint on your car - [Click Here](#)
- Latex Gloves - for the extra oily and dirty jobs - [Click Here](#)
- Medium and High Strength Loctite Thread lock compound - to prevent bolts from backing out - [Click Here](#)
- Anti-Seize Compound - to prevent seizing, galling, and corrosion of fasteners - [Click Here](#)
- Aerosol Brake/Parts Cleaner - for cleaning and degreasing parts
- Shop Rags - used for wiping hands, tools, and parts
- Penetrating oil - for helping to free rusted or stuck bolts and nuts
- Mechanics wire - for securing components out of the way
- Silicone spray lube - for rubber components such as exhaust hangers
- Paint Marker - for marking installation positions or bolts during a torquing sequence
- Plastic Wire Ties/Zip Ties - for routing and securing wiring harnesses or vacuum hoses
- Electrical tape - for wrapping wiring harnesses or temporary securing of small components

## INSTALLATION NOTES

- **RH** refers to the *passenger side* of the vehicle.
- **LH** refers to the *driver side* of the vehicle.
- Always use the proper torque specifications.
- If applicable to this installation, torque specifications will be listed throughout the document and at the end as well.
- Please read all of these instructions and familiarize yourself with the complete process **BEFORE** you begin.

## GENERAL PREPARATION AND SAFETY INFORMATION

ECS Tuning cares about your health and safety, please read the following safety information. This information pertains to automotive service in general, and while it may not pertain to every job you do, please remember and share these important safety tips.

- Park your car in a safe, well lit, level area.
- Shut the engine off and remove the key from the ignition switch.
- Make sure any remote start devices are properly disabled.
- **ALWAYS** wear safety glasses.
- Make sure the parking brake is applied until the vehicle is safely lifted and supported.
- Whether lifting a vehicle using an automotive lift or a hydraulic jack, be sure and utilize the factory specified lift points.
- Lifting a vehicle in an incorrect location can cause damage to the suspension/running gear.
- **ALWAYS** support the vehicle with jack stands.
- **ALWAYS** read and follow all safety information and warnings for the equipment you are using.



**NEVER** get underneath a vehicle that is supported only by a jack, and **ALWAYS** make sure that the vehicle is securely supported on jack stands.

## PROJECT OVERVIEW

In order to install the HID headlight bulbs ([ES3568851](#)) you will need to find a suitable mounting location for the ballasts within the engine bay, and some slight modification to the headlight access panel may be required to allow the connector to pass through.

Installation of these headlights will require removal of the front bumper cover. Once the bumper cover is removed, installation is just a matter of removing the stock headlights and installing the new headlights in their place.

***Now let's get to it!***



## REMOVING THE ORIGINAL HEADLIGHTS

### Step 1: T25 Torx

Remove the two screws (arrows) which secure the grille to the core support.



### Step 2:

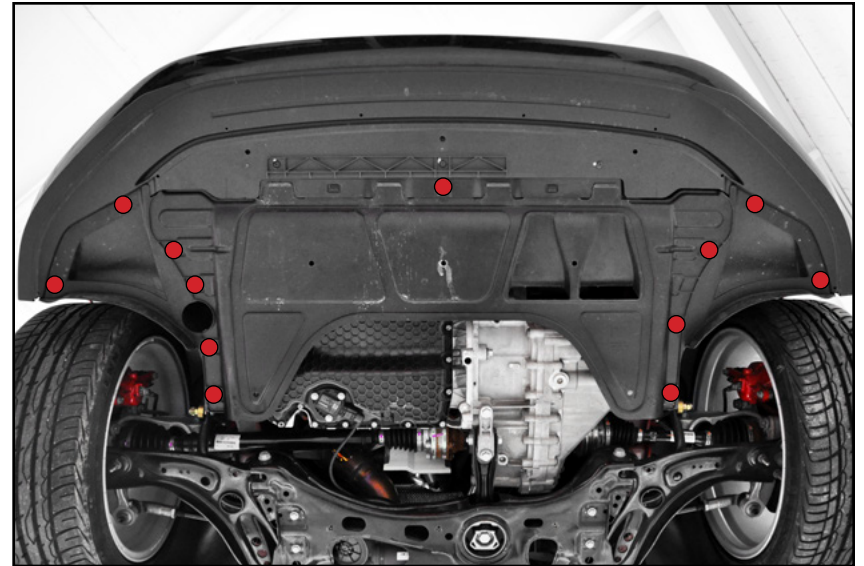
Remove the grille by pulling it towards the front of the vehicle and then lifting up to pop it free from the bumper.



## REMOVING THE ORIGINAL HEADLIGHTS

### Step 3: T25 Torx

Remove the screws (RED) which secure the bumper, belly pan and lower fender liners to the underside of the vehicle.



### Step 4: 17mm Protecta Socket & Breaker Bar

Remove the front wheels to gain access to the fender liners.

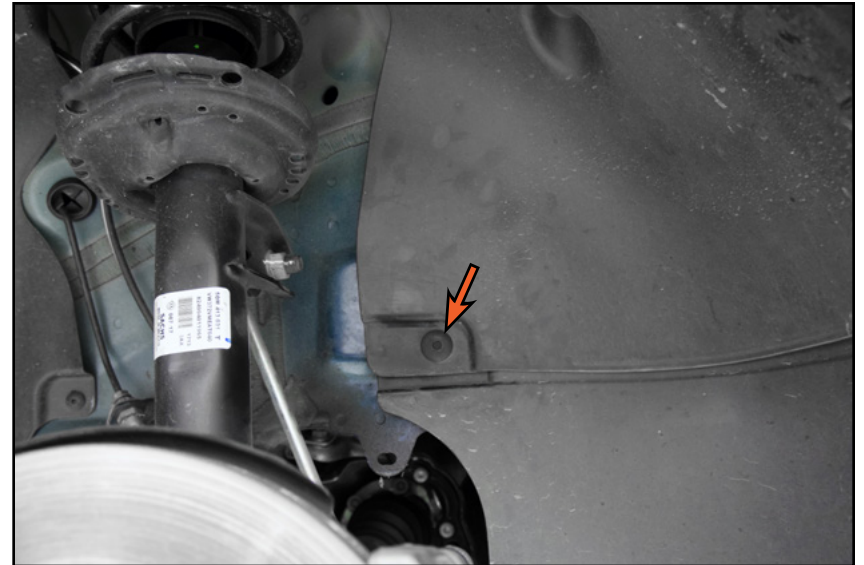




## REMOVING THE ORIGINAL HEADLIGHTS

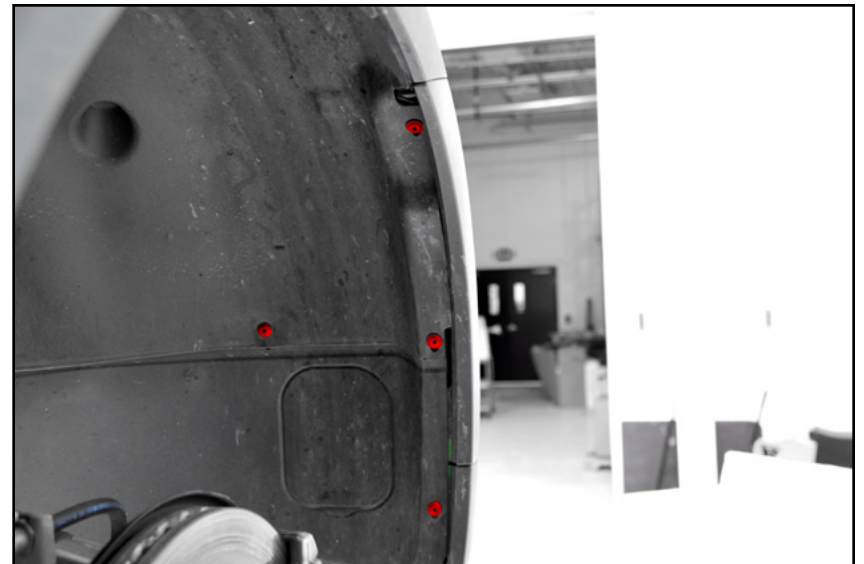
### Step 5: Pick

Locate and remove the push-rievet which secures the lower fender liner to the vehicle on either side.



### Step 6: T25 Torx

Remove the four screws (highlighted in **RED**) which secure each fender liner to the bumper.



## REMOVING THE ORIGINAL HEADLIGHTS

### Step 7: T25 Torx

Remove the vertical screw (highlighted in **RED**) which secures the bumper to the fender on either side.



### Step 8:

Remove the lower fender liners from the vehicle.



## REMOVING THE ORIGINAL HEADLIGHTS

### Step 9:

Disconnect the fog light connectors (if equipped).



### Step 10:

Certain vehicles have two additional screws which secure the bumper to the core support. If equipped, remove these screws (highlighted in **RED**) before moving forward.



## REMOVING THE ORIGINAL HEADLIGHTS

### Step 11:

Pull each side of the bumper away from the vehicle to pop it free.



### Step 12:

The bumper is secured to the core support by several tabs. It may be necessary to gently pry up on these tabs to free the bumper.



## REMOVING THE ORIGINAL HEADLIGHTS

### Step 13:

Pull the bumper cover off of the vehicle a few inches to ensure that there are no electrical connections or hoses still attached, then remove the bumper cover and set it aside.



### Step 14: T30 Torx

Remove the screw (highlighted in **RED**) which secures the headlight to the fender.



## REMOVING THE ORIGINAL HEADLIGHTS

### Step 15: T30 Torx

Remove the screw (highlighted in **RED**) which secures the front side of the headlight to the vehicle.



### Step 16: T30 Torx

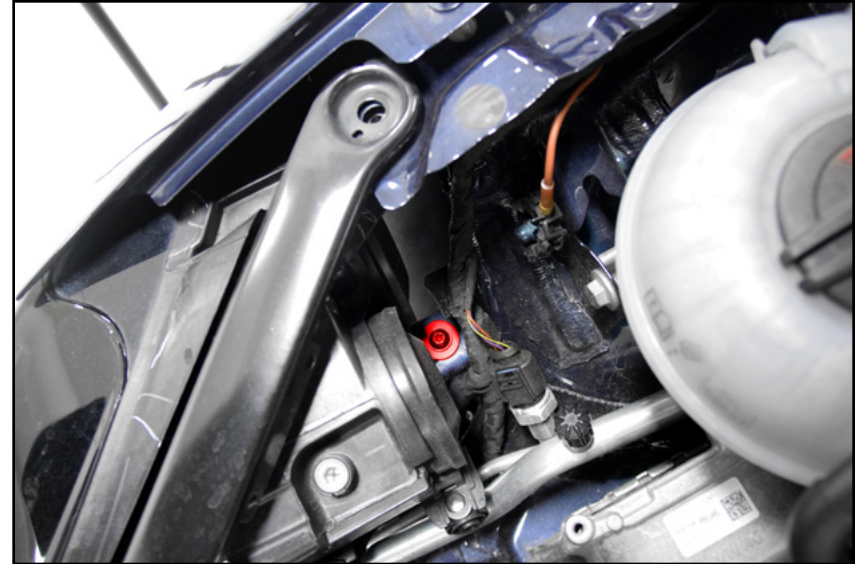
Remove the screw (highlighted in **RED**) which secures the back side of the headlight to the vehicle.



## REMOVING THE ORIGINAL HEADLIGHTS

### Step 17:

Remove the last screw (highlighted in **RED**) which secures the lower end of the headlight to the vehicle.



### Step 18:

Disconnect the headlight connector from the back of the stock headlight and pull the stock headlight free from the vehicle.

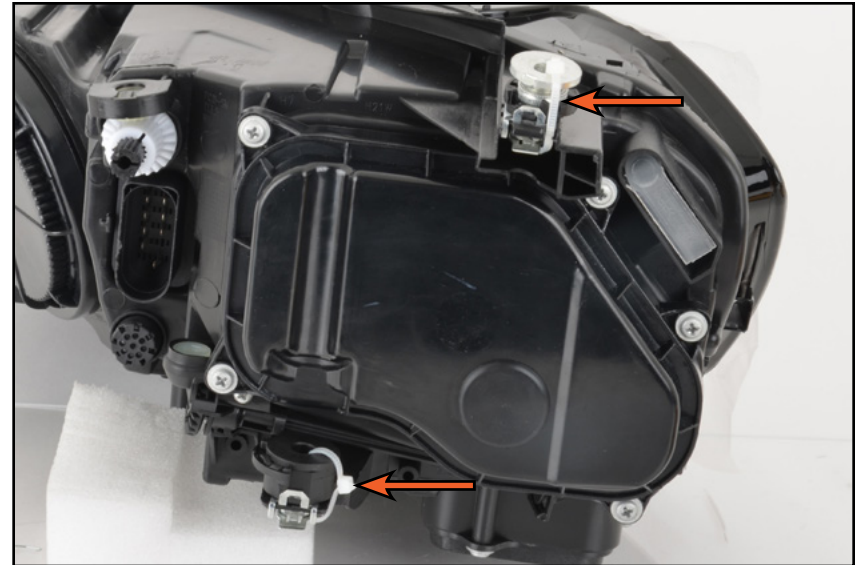
Repeat steps 14-18 to remove the other headlight assembly.



## INSTALLING THE NEW HEADLIGHTS

### Step 1:

Cut the two zip ties, then thread the two adjustment spacers up or down until they match the height of the spacers on the stock headlights.



### Step 2:

Slide the new headlight assembly into the vehicle and test to ensure that the headlight is flush with the fender as shown in the photo on the right.





## INSTALLING THE NEW HEADLIGHTS

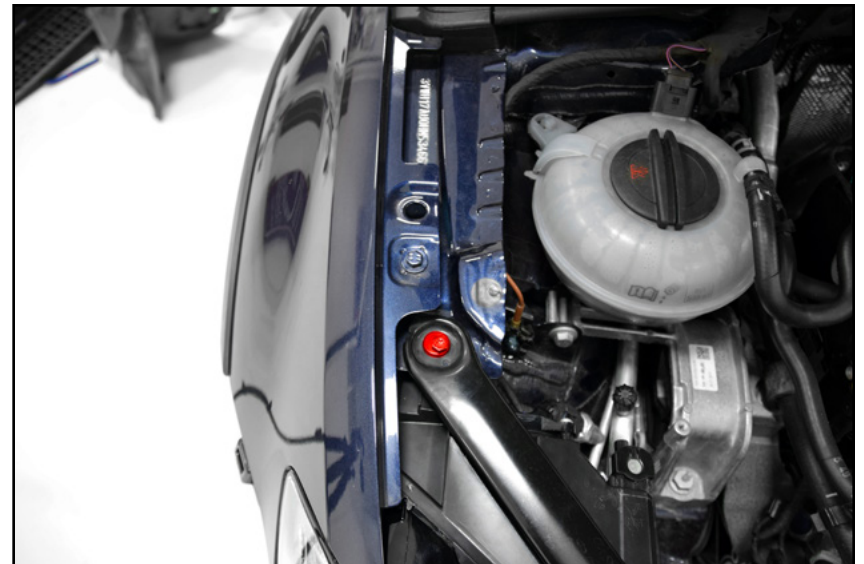
### Step 3: T30 Torx

Install the screw (highlighted in **RED**) which secures the headlight to the fender.



### Step 4: T30 Torx

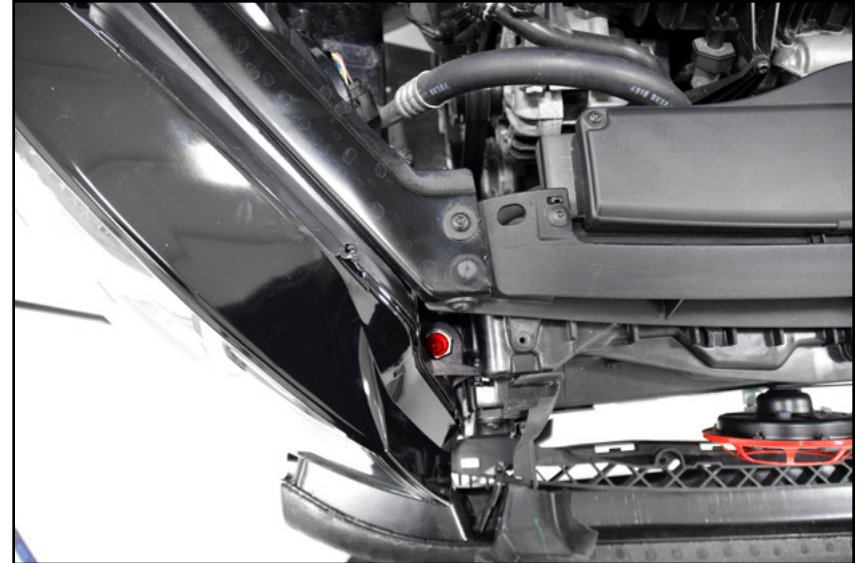
Install the bolt (highlighted in **RED**) which secures the back of the headlight to the vehicle.



## INSTALLING THE NEW HEADLIGHTS

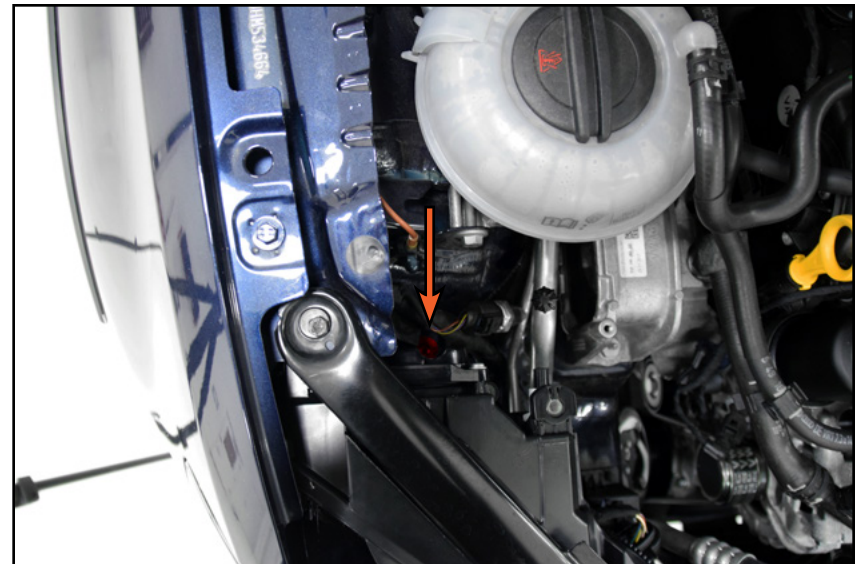
### Step 5: T30 Torx

Install the bolt (highlighted in **RED**) which secures the front of the headlight to the vehicle.



### Step 6: T30 Torx

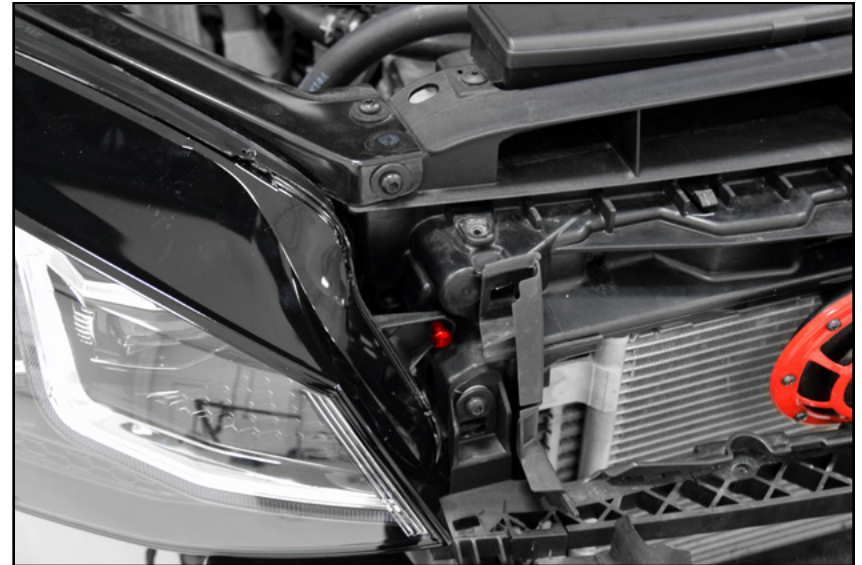
Install the last screw (highlighted in **RED**) which secures the lower part of the headlight to the vehicle.



## INSTALLING THE NEW HEADLIGHTS

### Step 7:

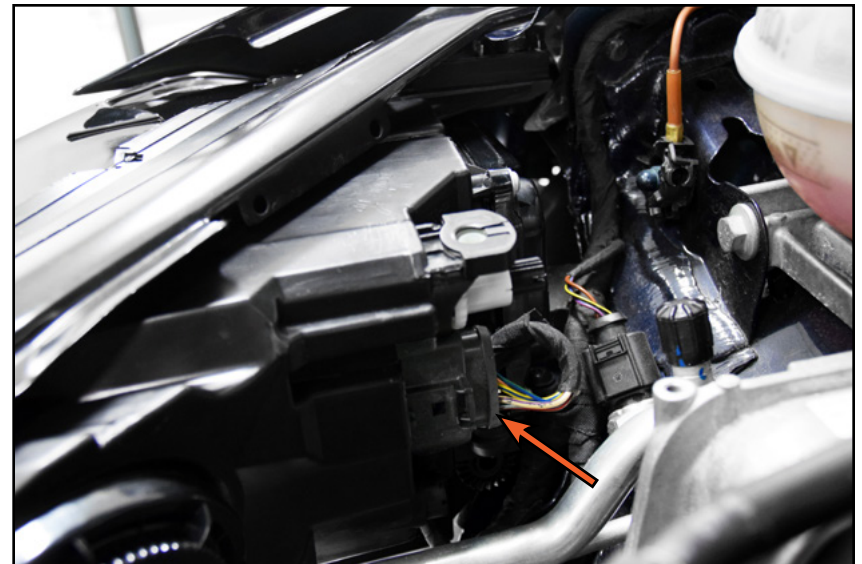
Transfer the final alignment screw (highlighted in **RED**) from the stock headlight to the new headlight. This screw doesn't thread into anything, it is designed to butt up against the core support for minor angle adjustment and vibration resistance.



### Step 8:

Install the headlight connector into the new headlight.

Repeat steps 1-8 to install the other headlight assembly.



## INSTALLING THE NEW HEADLIGHTS

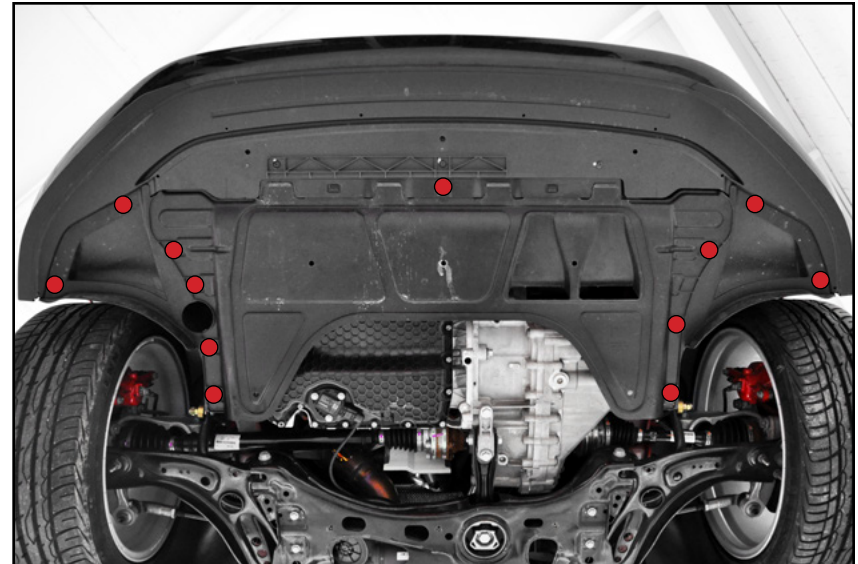
### Step 9:

Reinstall the bumper and the lower fender liners and secure it with the hardware we removed previously.



### Step 10:

Install the screws (**RED**) which secure the bumper, belly pan and lower fender liners to the underside of the vehicle.



## INSTALLING THE NEW HEADLIGHTS

### Step 11:

Reinstall the wheels and torque the wheel bolts to 120Nm (89 Ft-lbs).



### Step 12:

Reinstall the grille and install the two screws (arrows) which secure it to the core support.



## SCHWABEN - BUILD THE ULTIMATE TOOL COLLECTION

At ECS Tuning, we carry a line of high quality Schwaben Tools and Equipment to help you build your ultimate tool collection. Never before has affordability and quality been so closely related. Our entire Schwaben line is subjected to strict in house testing for strength and durability. See what we have to offer and equip your garage without breaking the bank.

**Your Helix MK7.5 Style Headlights installation is complete!**



**These instructions are provided as a courtesy by ECS Tuning**

Proper service and repair procedures are vital to the safe, reliable operation of all motor vehicles as well as the personal safety of those performing the repairs. Standard safety procedures and precautions (including use of safety goggles and proper tools and equipment) should be followed at all times to eliminate the possibility of personal injury or improper service which could damage the vehicle or compromise its safety.

Although this material has been prepared with the intent to provide reliable information, no warranty (express or implied) is made as to its accuracy or completeness. Neither is any liability assumed for loss or damage resulting from reliance on this material. SPECIFICALLY, NO WARRANTY OF MERCHANTABILITY, FITNESS FOR A PARTICULAR PURPOSE OR ANY OTHER WARRANTY IS MADE OR TO BE IMPLIED WITH RESPECT TO THIS MATERIAL. In no event will ECS Tuning, Incorporated or its affiliates be liable for any damages, direct or indirect, consequential or compensatory, arising out of the use of this material.