



9a Puzzle Lane Newton, NH 03858
1-978-378-2520 - Wholesale Sales & Distribution
1-978-388-7769 - International
978-388-7769 - Sales & CS



Program Installation

Computer Requirements:

Windows XP/Vista/7
Windows 8/8.1 and 10
Mac OS X with Windows emulator

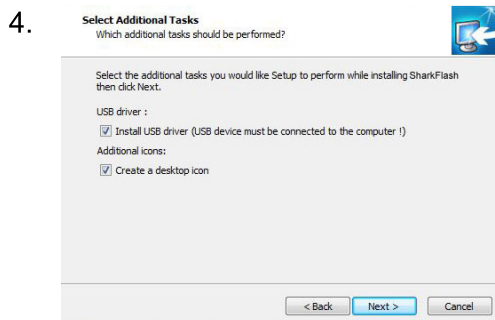
Processor Speed: >400Mhz
RAM: >200MB
Hard Drive Space: >400MB
Battery Life: >60 minutes or plugged into a wall outlet
Power Options: set to "Never" (hard drive and screen will not turn off)

This setup guide will assist in installing the Turner-ECU-Flash-Installation.exe program onto your Windows computer. The actual flash software installation to your car is covered by the separate Turner Shark User Manual.

You will need the Turner OBD tool and USB cable to complete the program setup.

Install:

1. Connect the Turner Shark tool and cable to your computer.
 - a. If you're prompted to install drivers right away you can click [Cancel]. You will install the drivers during Step 4.
2. Open the Turner Shark installer program.
3. Follow the standard directions to install it on your hard drive. You should not have to change any of the default installation settings.



On the Additional Tasks screen, make sure the box is checked to Install USB Driver. Remember to have your cable and tool plugged into your computer.

If a warning appears about un-signed drivers, Windows Logo testing, or publishing, select the option to "Continue Anyway" or "Install the driver anyway".

The Windows 8 installation will take a few extra minutes to complete. Allow the installation to finish – do not force close the install window.

You're done! You can refer to the separate Turner Flash User Manual to begin flashing your car.