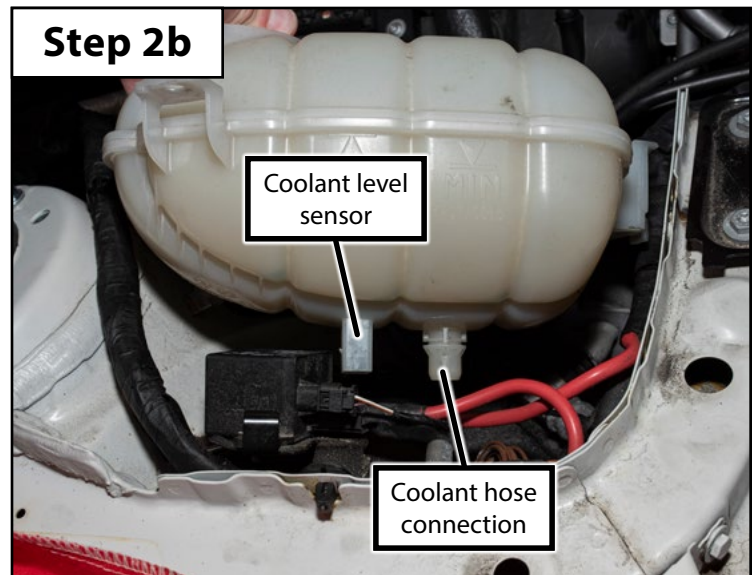
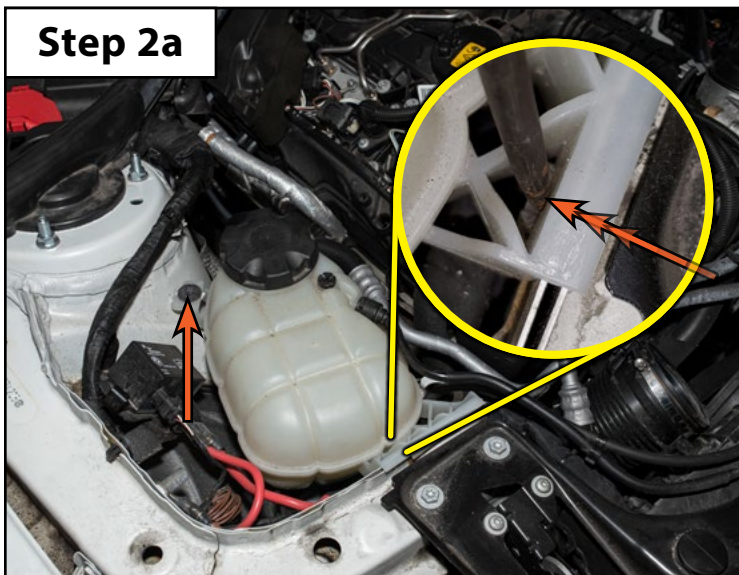
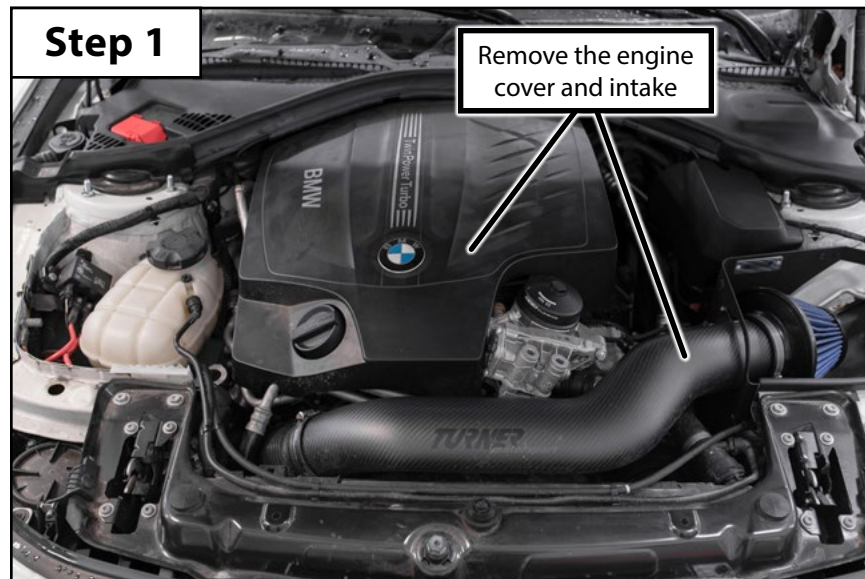


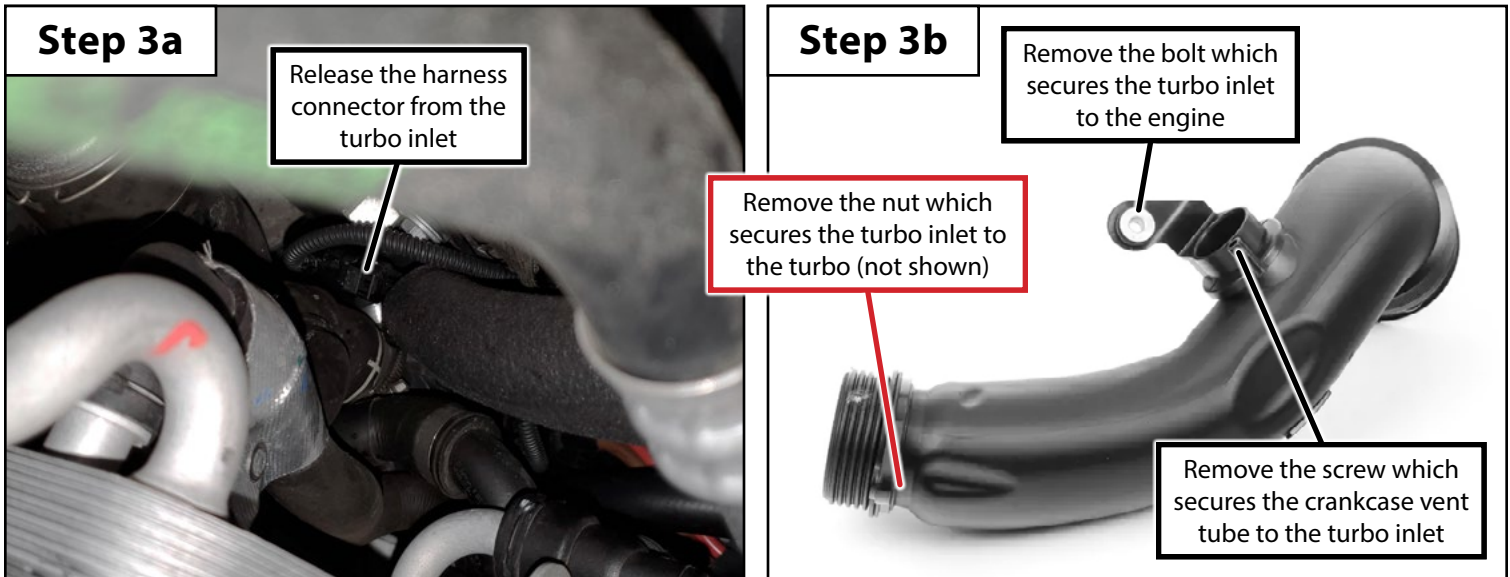
## Section 1: Removing the Stock Turbo Inlet

- Step 1**
- Remove the engine cover and intake (**Step 1 Photo**).
- Step 2a**
- This step is optional, but **HUGELY** beneficial.
  - Removing the coolant expansion tank does a lot to open up space to work around the turbo inlet.
  - To remove the expansion tank you'll need to:
    - Remove the 8mm screw from the RH strut tower (arrow in the **Step 2a Photo**).
    - Release the two tabs which secure the expansion tank to the core support (**YELLOW** inset photo).
    - Lift the expansion tank upward slightly to access the connections underneath.
- Step 2b**
- Locate and disconnect the coolant level sensor underneath the expansion tank (**Step 2b Photo**).
  - Release the coolant hose underneath the expansion tank (**Step 2b Photo**).
    - Be sure to put a drain pan underneath the vehicle for this step to help contain the mess.



## Section 1: Removing the Stock Turbo Inlet

- Step 3a** • Locate and disconnect the harness connector from the turbo inlet (**Step 3a Photo**).
- Step 3b** • Remove the screw which secures the crankcase vent tube to the turbo inlet (**Step 3b photo**).
- Space is especially tight around the turbo inlet and this screw can be tough to reach.
  - A swivel joint and socket can come in handy here.
- Remove the bolt which secures the turbo inlet to the engine (**Step 3b photo**).
- Remove the nut which secures the turbo inlet to the turbo (**RED** text box in the **Step 3b photo**).
- Step 4** • Carefully remove the turbo inlet from the engine bay (**Step 4 photo**).
- You'll need to twist and manipulate the turbo inlet while pulling it out to clear the hoses and lines around it.



## Section 2: Installing the New Upgraded Turbo Inlet

- Step 1**
- Assemble the new upgraded turbo inlet (**Step 1 Photo**).
    - Install the supplied o-rings into the grooves in the new turbo inlet.
    - Install the mounting bracket w/the supplied hardware.
    - Transfer the mounting grommet to the new mounting bracket.
- Step 2**
- Carefully guide the new turbo inlet into place (**Step 2 Photo**).
- Step 3**
- Install the bolt which secures the turbo inlet to the engine (**Step 3 Photo** and **YELLOW** inset photo).
  - Reinstall the nut which secures the turbo inlet to the turbo (**RED** text box in the **Step 1 photo**).
- Step 4**
- Connect the crankcase vent tube to the new turbo inlet using the supplied hardware (not shown).
  - Reinstall the coolant expansion tank (if removed) and bleed the cooling system.
  - Reinstall the engine cover and intake (**Step 4 Photo**).

### Step 1

Reinstall the nut which secures the turbo inlet to the turbo (not shown)

Install the mounting bracket w/the supplied hardware

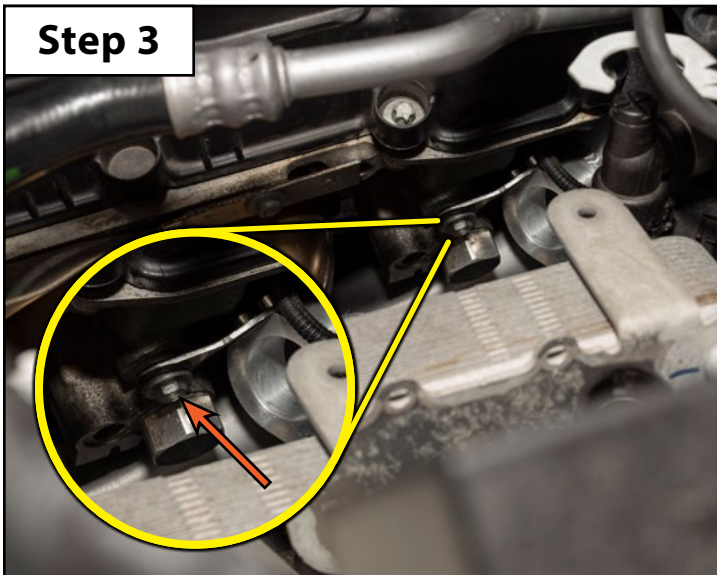
Install the supplied o-rings

Transfer the mounting grommet to the new bracket

### Step 2



### Step 3



### Step 4

