



## BMW E39 M5 Skid Plate kit Installation Instructions



Proper service and repair procedures are vital to the safe, reliable operation of all motor vehicles as well as the personal safety of those performing the repairs. Standard safety procedures and precautions (including use of safety goggles and proper tools and equipment) should be followed at all times to eliminate the possibility of personal injury or improper service which could damage the vehicle or compromise its safety.

## INSTALLATION NOTES

- **RH** refers to the *passenger side* of the vehicle.
- **LH** refers to the *driver side* of the vehicle.
- Always use the proper torque specifications.
- If applicable to this installation, torque specifications will be listed throughout the document and at the end as well.
- Please read all of these instructions and familiarize yourself with the complete process **BEFORE** you begin.

## GENERAL PREPARATION AND SAFETY INFORMATION

Turner Motorsport cares about your health and safety, please read the following safety information. This information pertains to automotive service in general, and while it may not pertain to every job you do, please remember and share these important safety tips.

- Park your car in a safe, well lit, level area.
- Shut the engine off and remove the key from the ignition switch.
- Make sure any remote start devices are properly disabled.
- **ALWAYS** wear safety glasses.
- Make sure the parking brake is applied until the vehicle is safely lifted and supported.
- Whether lifting a vehicle using an automotive lift or a hydraulic jack, be sure and utilize the factory specified lift points.
- Lifting a vehicle in an incorrect location can cause damage to the suspension/running gear.
- **ALWAYS** support the vehicle with jack stands.
- **ALWAYS** read and follow all safety information and warnings for the equipment you are using.



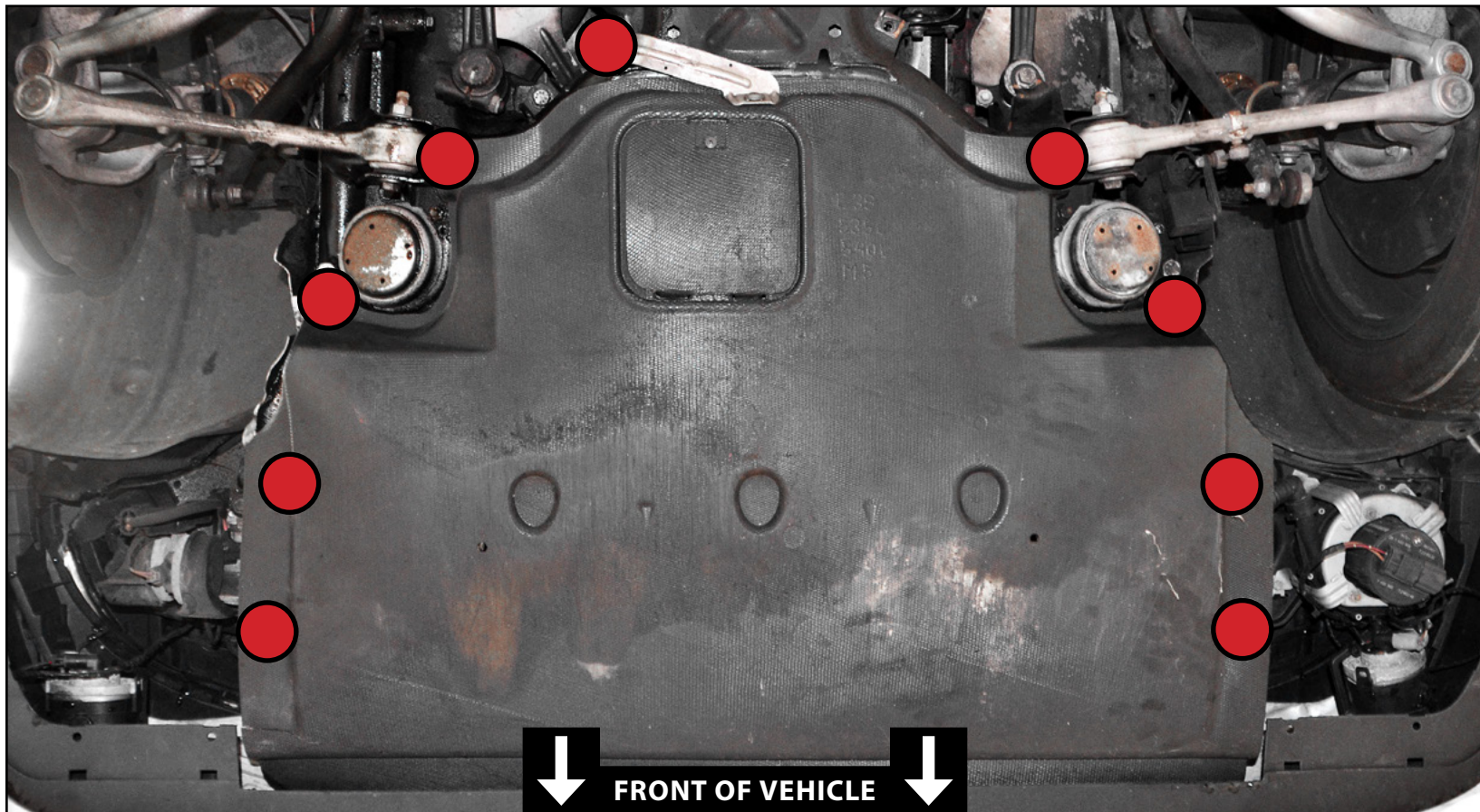
**NEVER** get underneath a vehicle that is supported only by a jack, and **ALWAYS** make sure that the vehicle is securely supported on jack stands.



## INSTALLING THE SKID PLATE KIT

### Step 1: Phillips Screwdriver

First, safely lift and support the vehicle and remove the front wheels, then remove the nine fasteners (circled in **RED**) and remove the factory plastic belly pan from the vehicle.



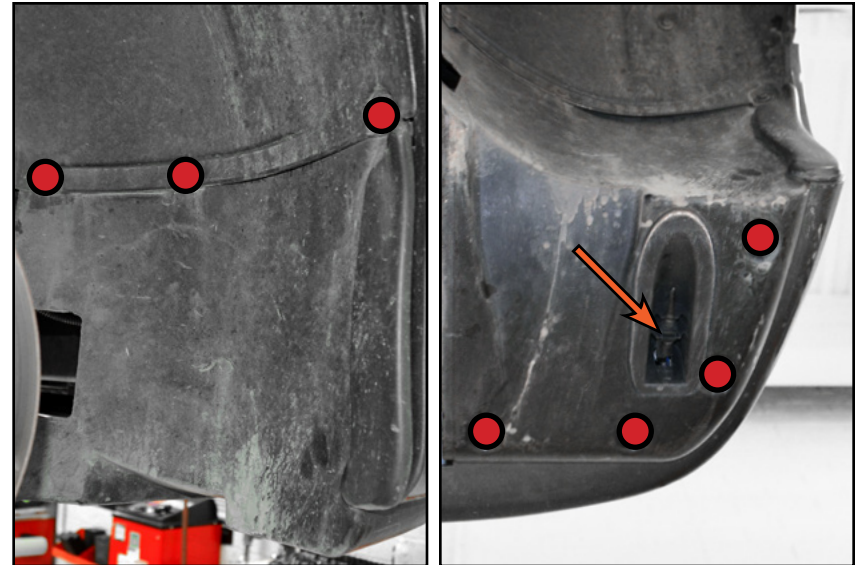
## INSTALLING THE SKID PLATE KIT

### Step 2: 8mm Socket & Ratchet

Remove the seven screws (highlighted in **RED**) which secure each lower fender liner to the vehicle. Carefully remove the lower fender liners.

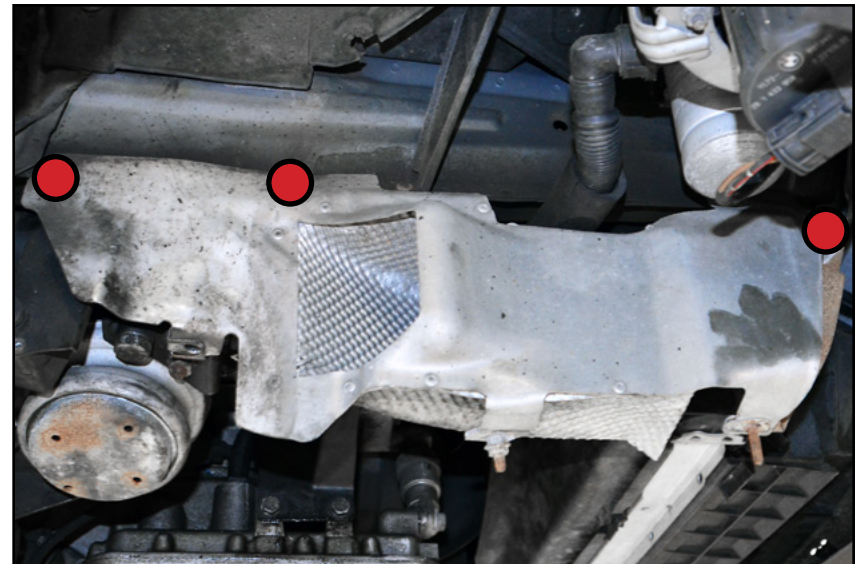


Be sure to disconnect the ambient air temperature sensor (arrow) before attempting to remove the fender liner.



### Step 3: 8mm Socket & Ratchet

Remove the three screws (highlighted in **RED**) which secure each stock brake duct to the vehicle. Remove the stock brake ducts.

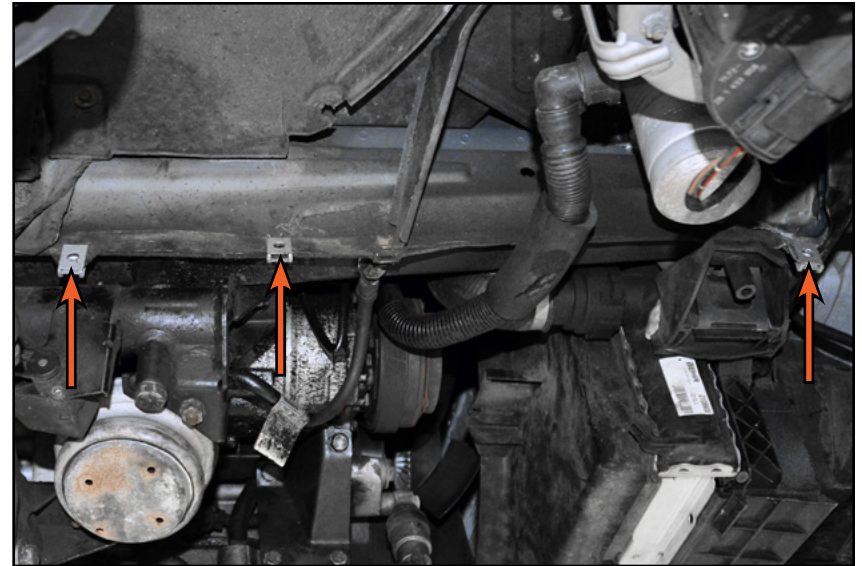




## INSTALLING THE SKID PLATE KIT

### Step 4:

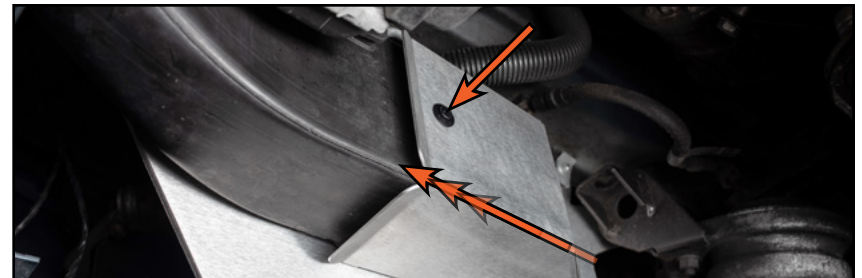
Pry the three plastic expanding nuts out of the body, and install the provided clip nuts (arrows) in their place.



### Step 5: 4mm Hex (Allen)

Install the plastic push rivet (arrow) into each aluminum brake duct as shown, and slide the new brake duct into the plastic ducts as shown.

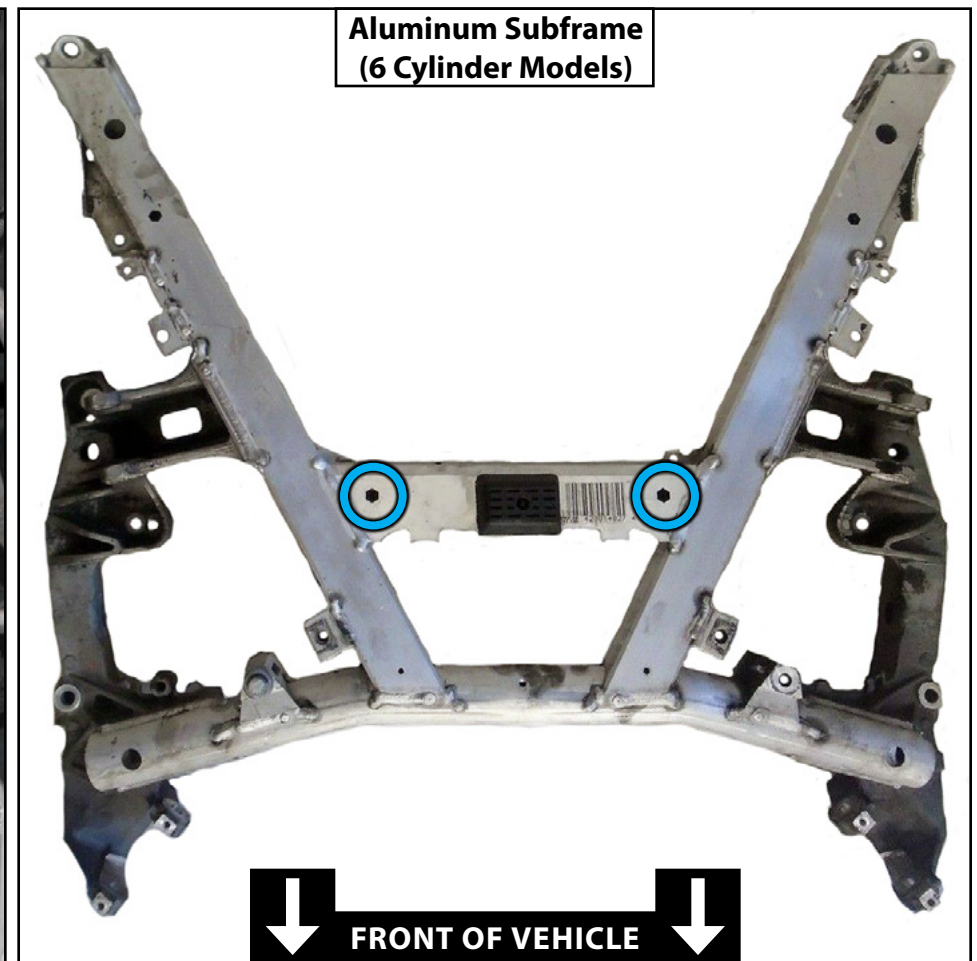
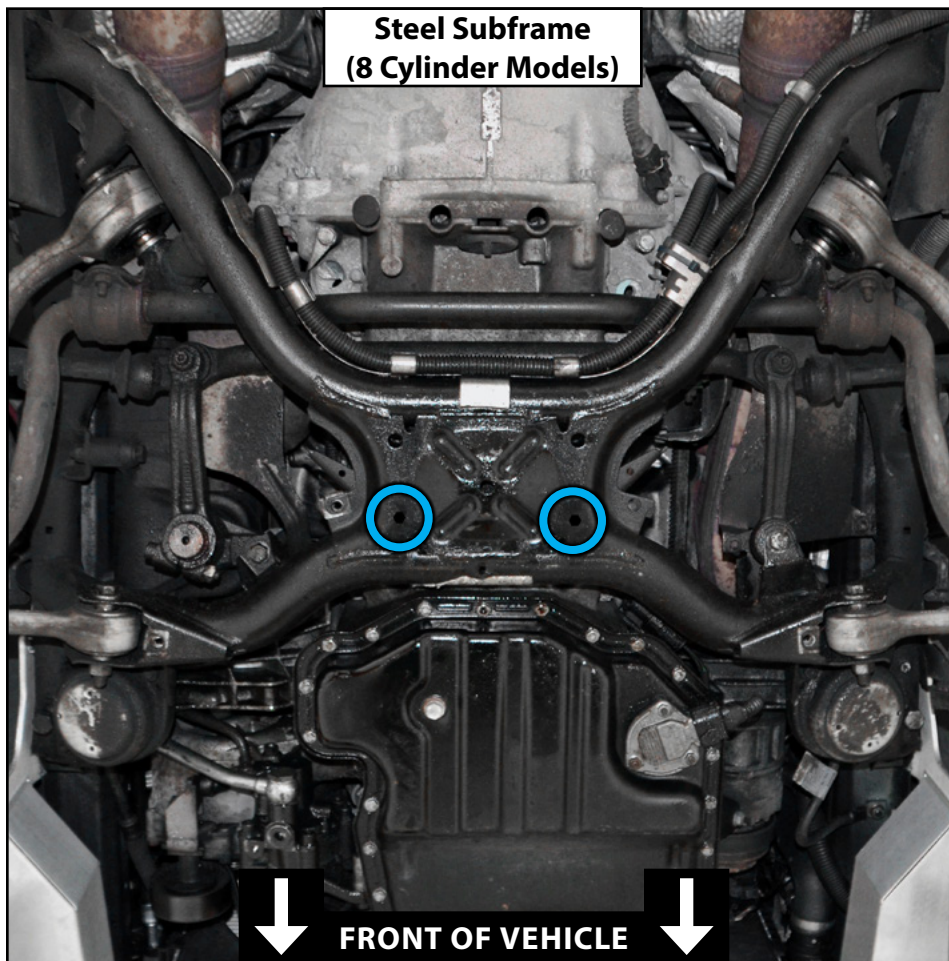
Install three of the provided 4mm allen screws (arrows) through the holes in the ducts and into the clip nuts to secure them into place.



## INSTALLING THE SKID PLATE KIT

### Step 6:

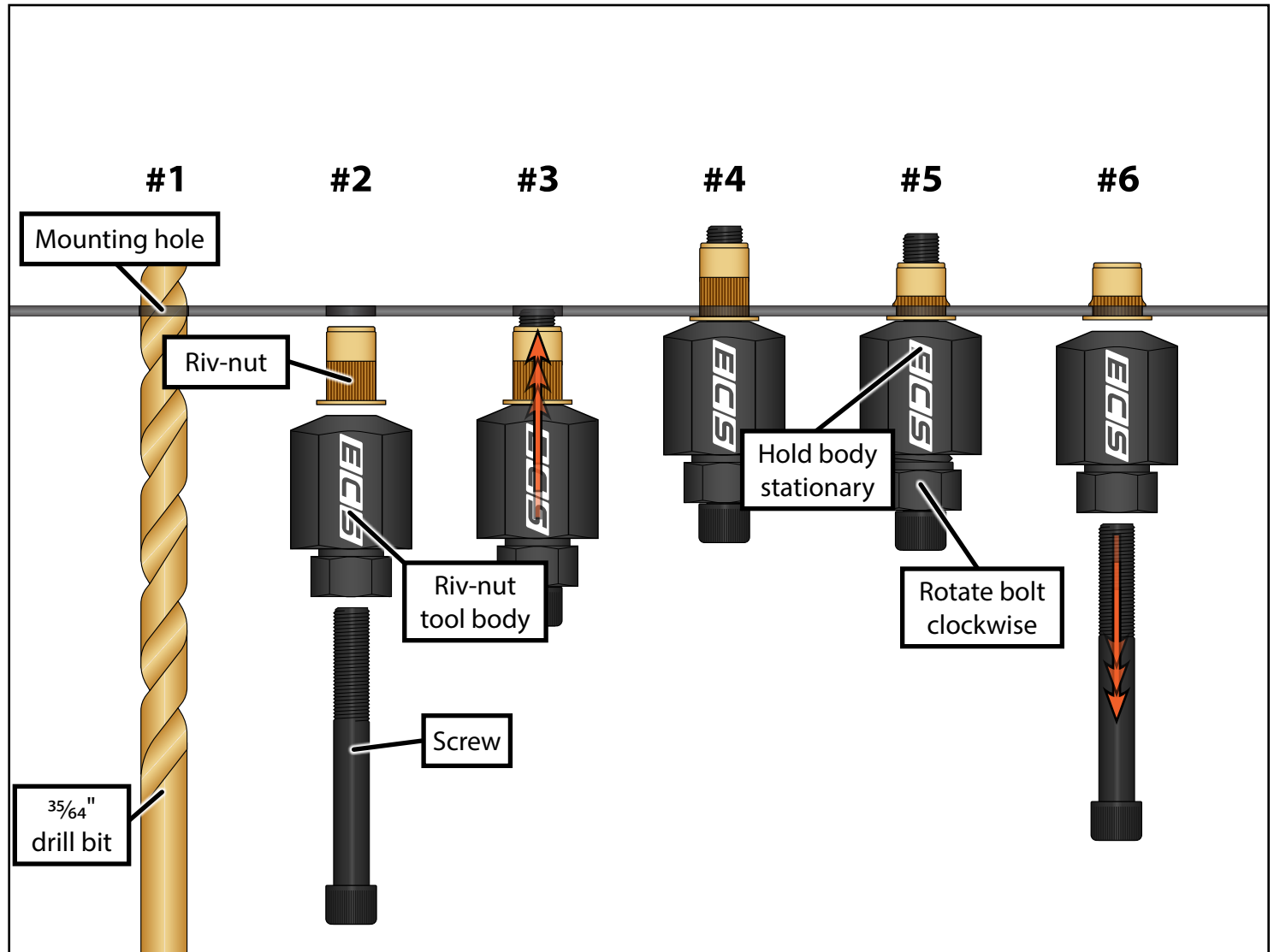
Next, take note of the locations which are circled in **BLUE** in the photo, these are the locations where we will be installing the riv-nuts in the next step. If your vehicle is equipped with a steel subframe (8 cylinder models) this will be the hexagon shaped holes in the front of the subframe. If your vehicle is equipped with an aluminum subframe (6 cylinder models) this will be the hexagon shaped holes on the cross beam.



## INSTALLING THE SKID PLATE KIT

### Step 7: Drill & $\frac{35}{64}$ " Drill Bit, 24mm Wrench, 18mm Socket & Torque Wrench

Prepare the mounting hole by drilling it out using a  $\frac{35}{64}$ " drill bit (#1). Be sure to apply paint to the hole after drilling to prevent corrosion. Align the riv-nut tool body with the flanged side of the riv-nut (#2), then thread the screw through the tool body and into the riv-nut by hand until it is fully seated (#3). Insert the riv-nut into the mounting hole, making sure that it is fully seated (#4). Next, while holding the tool body stationary with a wrench, rotate the tool pressing bolt clockwise to expand the riv-nut (#5). Torque the bolt to 15 Nm (11 Ft-lbs), then remove it and repeat this procedure to install the other riv-nut (#6).



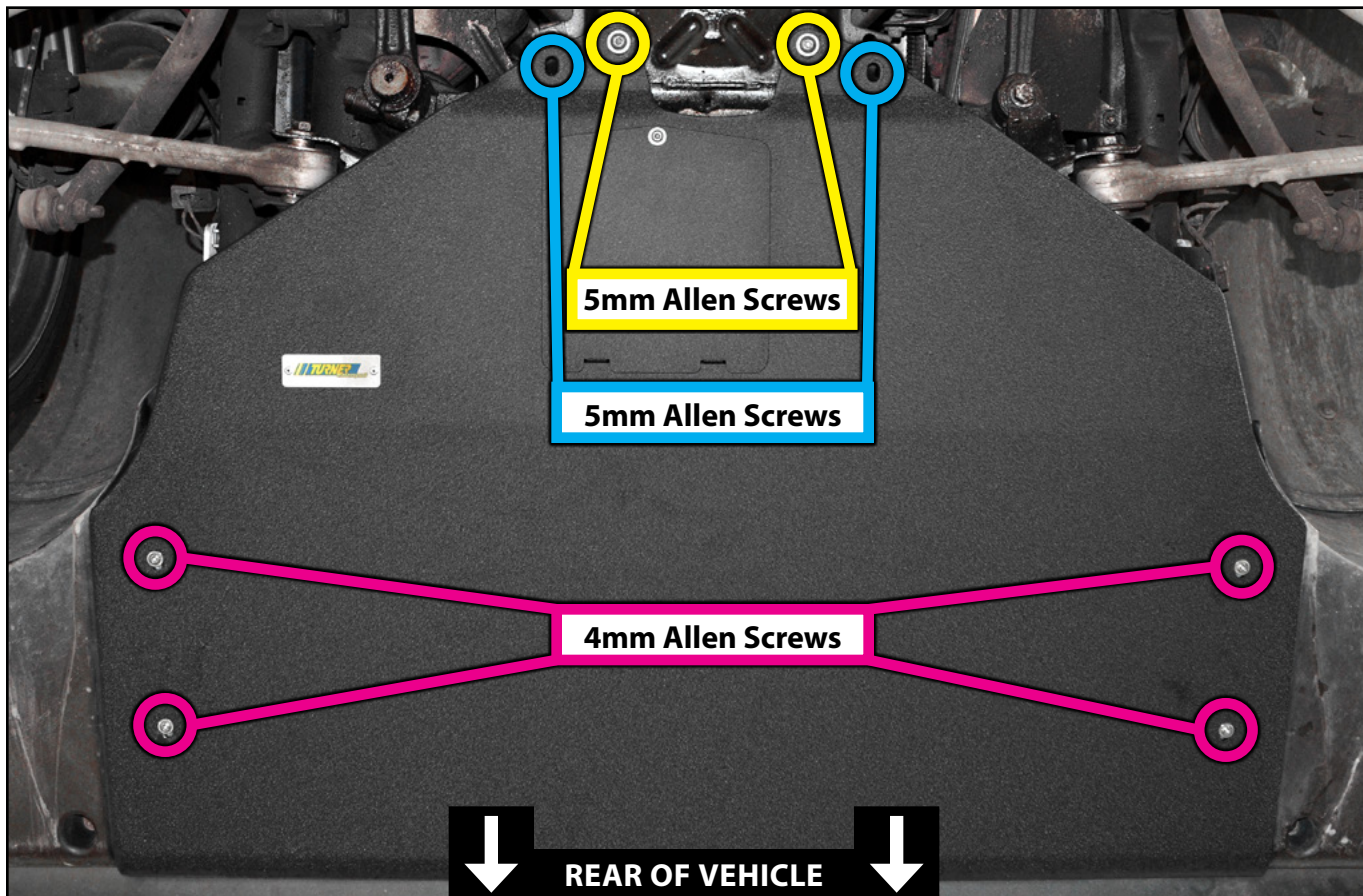


## INSTALLING THE SKID PLATE KIT

### Step 8: 4mm Hex (Allen), 5mm Hex (Allen)

Lift the new skid plate into position while you install all of the fasteners using the photo below and the color guide on the right it as a reference, then hand tighten the allen screws. Note that there are two different sets of holes in the rear of the skid plate, depending on whether your vehicle is equipped with a steel subframe (8 cylinder models) or with an aluminum subframe (6 cylinder models).

***Congratulations, your installation is complete!***



5mm Allen Screws (QTY 2)  
**-Steel Subframe-**



5mm Allen Screws (QTY 2)  
**-Aluminum Subframe-**



4mm Allen Screws (QTY 3)



## Your Transmission Street Shield installation is complete!



### **These instructions are provided as a courtesy by Turner Motorsport**

Proper service and repair procedures are vital to the safe, reliable operation of all motor vehicles as well as the personal safety of those performing the repairs. Standard safety procedures and precautions (including use of safety goggles and proper tools and equipment) should be followed at all times to eliminate the possibility of personal injury or improper service which could damage the vehicle or compromise its safety.

Although this material has been prepared with the intent to provide reliable information, no warranty (express or implied) is made as to its accuracy or completeness. Neither is any liability assumed for loss or damage resulting from reliance on this material. SPECIFICALLY, NO WARRANTY OF MERCHANTABILITY, FITNESS FOR A PARTICULAR PURPOSE OR ANY OTHER WARRANTY IS MADE OR TO BE IMPLIED WITH RESPECT TO THIS MATERIAL. In no event will Turner Motorsport, Incorporated or its affiliates be liable for any damages, direct or indirect, consequential or compensatory, arising out of the use of this material.