



BMW E9x 3 Series Non-M Skid Plate Installation Instructions

Introducing the new Turner E9x 3 Series Non-M Skid Plate! The Turner engineering team set out to design a no-compromise belly pan replacement which requires no major modification to the vehicle, and offers some serious protection for the bottom of your E9x 3 Series! The finished product was this; the **ultimate** upgrade for your belly pan replacement woes.

The skid plates are available in wrinkle black powder-coat or raw aluminum finishes, and they feature a support bracket for extra strength and rigidity. We provide all of the hardware you'll need for a quick and easy installation.

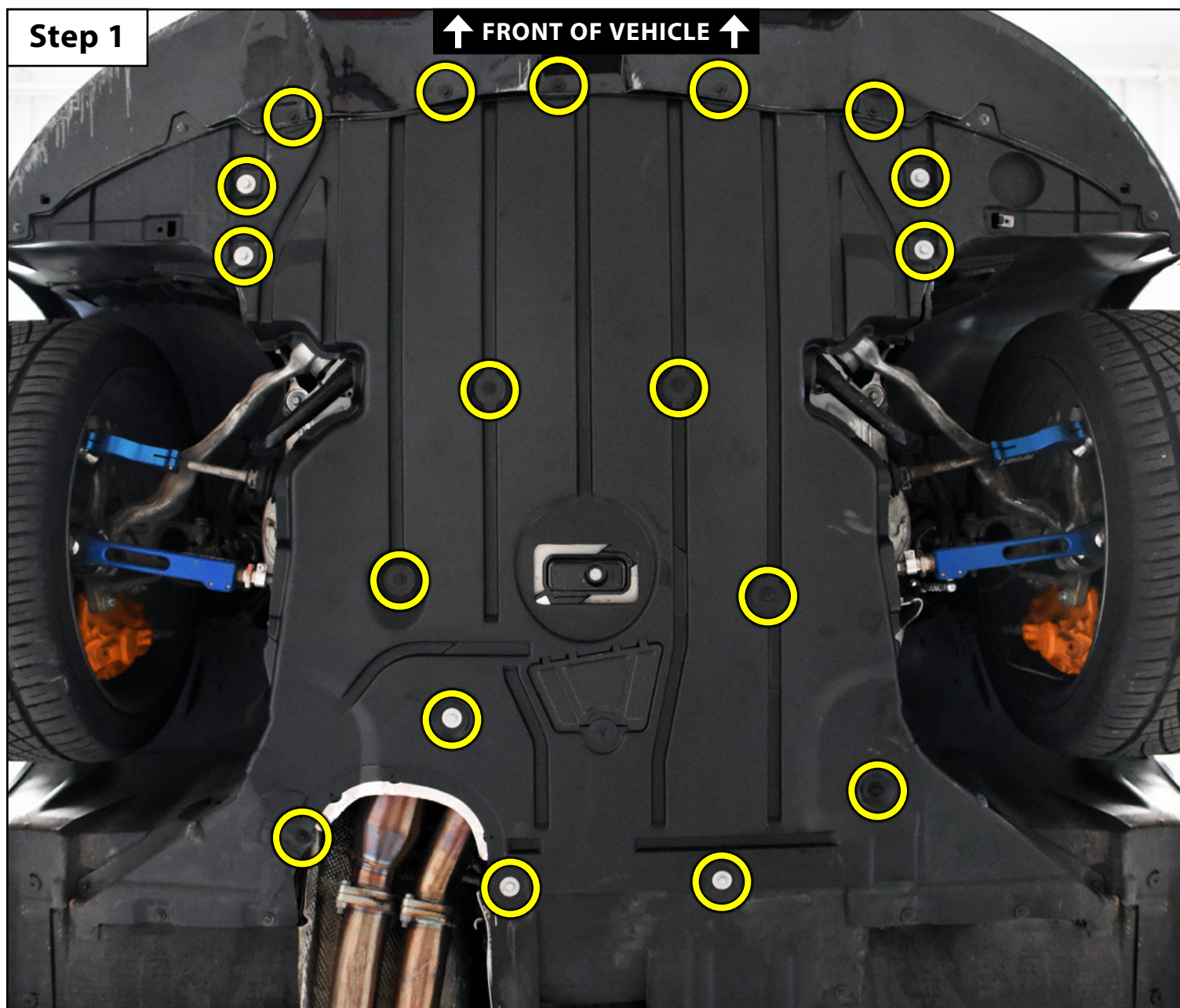
Installation time: 1 hour



Proper service and repair procedures are vital to the safe, reliable operation of all motor vehicles as well as the personal safety of those performing the repairs. Standard safety procedures and precautions (including use of safety goggles and proper tools and equipment) should be followed at all times to eliminate the possibility of personal injury or improper service which could damage the vehicle or compromise its safety.

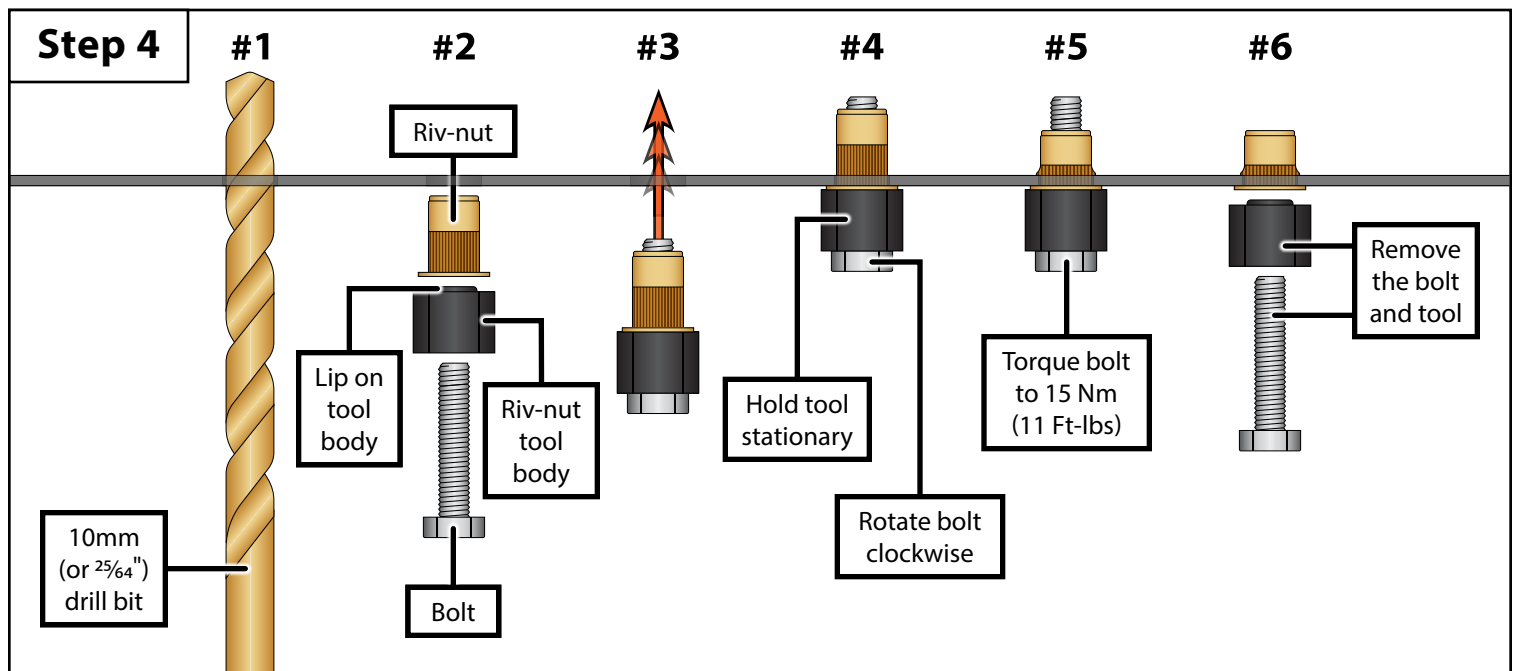
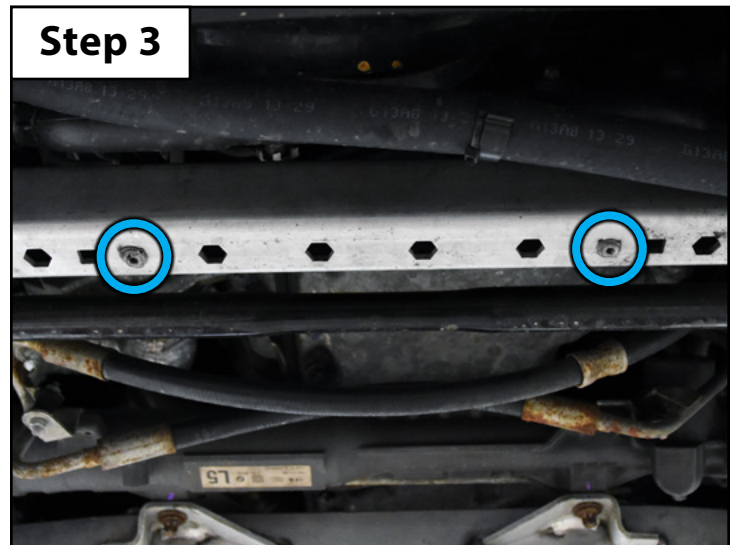
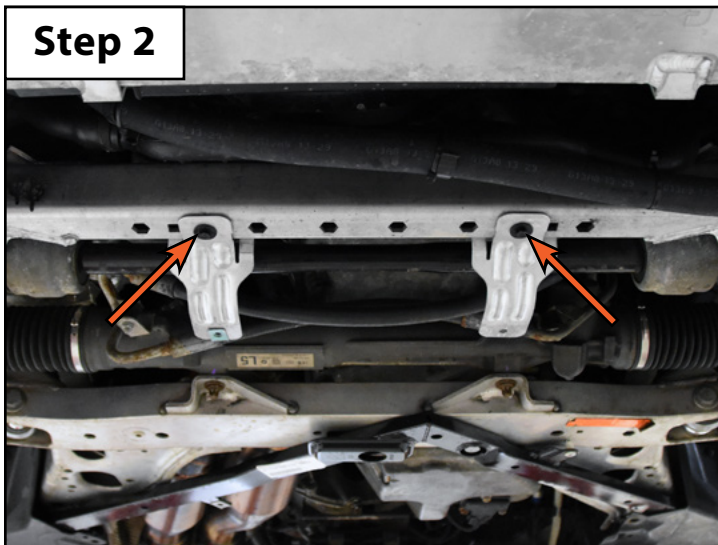
Installing the New Skid Plate Kit

- Step 1**
- Safely lift and support the vehicle.
 - Remove all of the fasteners from the center insulation panel (circled in **YELLOW** in the **Step 1 Photo** below).
 - Bolt locations and quantities may vary slightly depending on your vehicle.
 - Remove the center insulation panel from the vehicle.



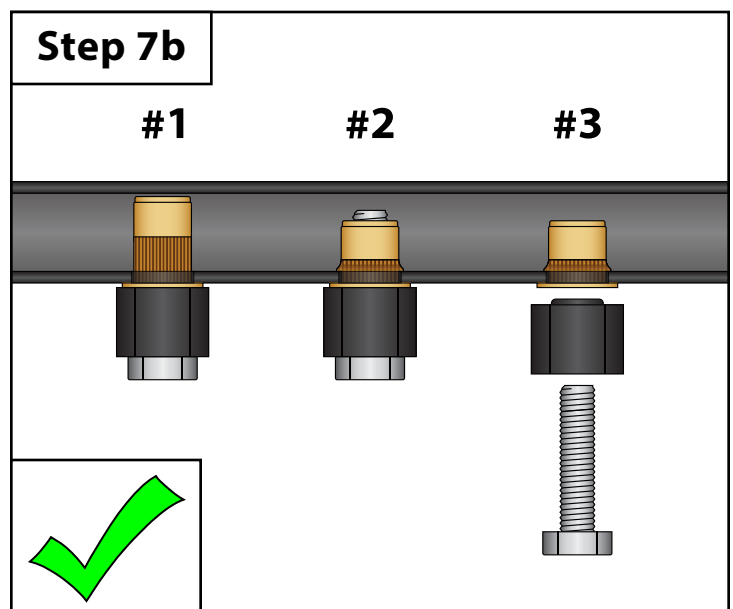
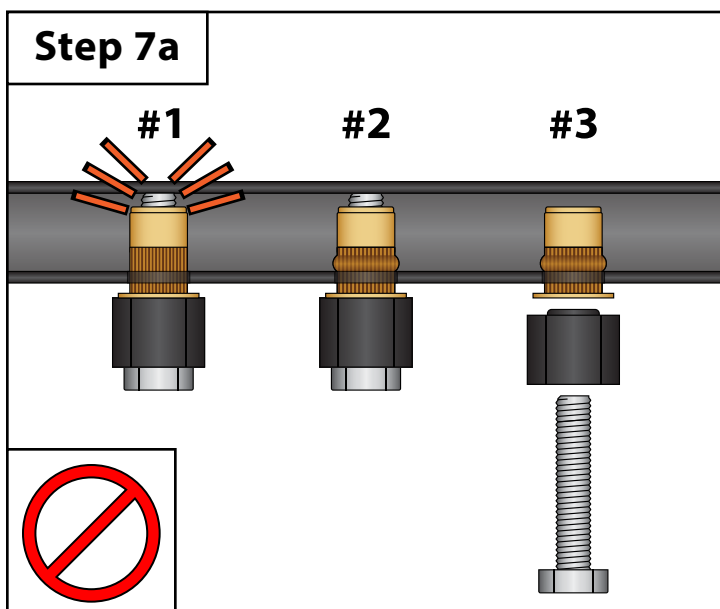
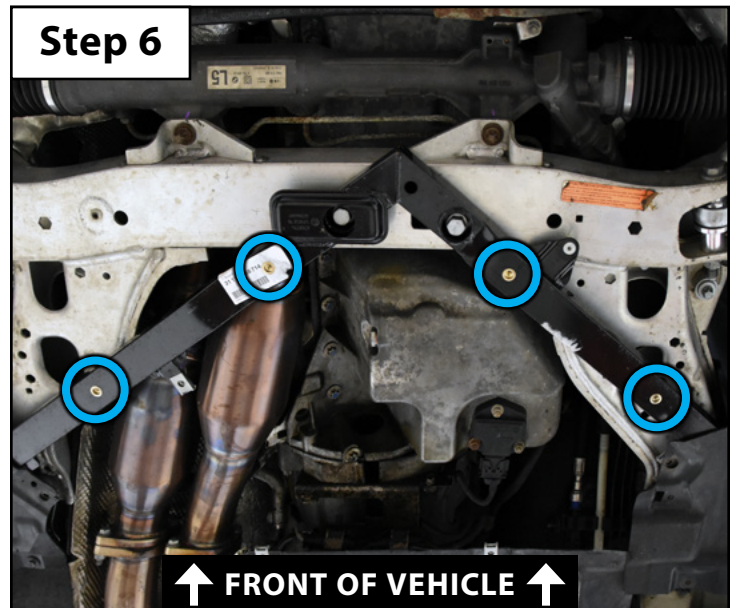
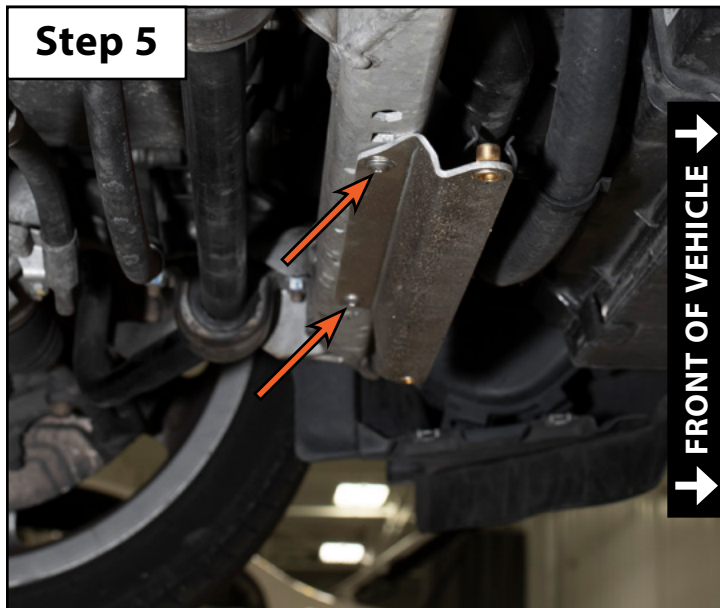
Installing the New Skid Plate Kit

- Step 2**
- Remove the two screws (arrows in the **Step 2 Photo**) from each belly pan bracket.
 - Remove the brackets from the vehicle.
- Step 3**
- Note the locations of the plastic expanding nuts (circled in **BLUE** in the **Step 3 Photo**).
 - We will be working on these locations in the next step.
- Step 4**
- Drill out the mounting holes using a 10mm (or $\frac{25}{64}$ ") drill bit (**#1 in Step 3 photo below**).
 - You can find a 10mm drill bit on our site by clicking [HERE](#).
 - Be sure to apply paint to the hole after drilling to prevent corrosion.
 - Align the lip on the riv-nut tool body with the flanged side of the riv-nut (**#2**).
 - Thread the bolt through the tool body and into the riv-nut by hand until it is fully seated (**#3**).
 - Insert the riv-nut into the mounting hole, making sure that it is fully seated (**#4**).
 - While holding the tool body stationary with a wrench, rotate the bolt clockwise to expand the riv-nut (**#5**).
 - Torque the bolt to 15 Nm (11 Ft-lbs), then remove the bolt and tool from the riv-nut (**#6**).
 - Repeat this procedure to install the remaining riv-nuts.



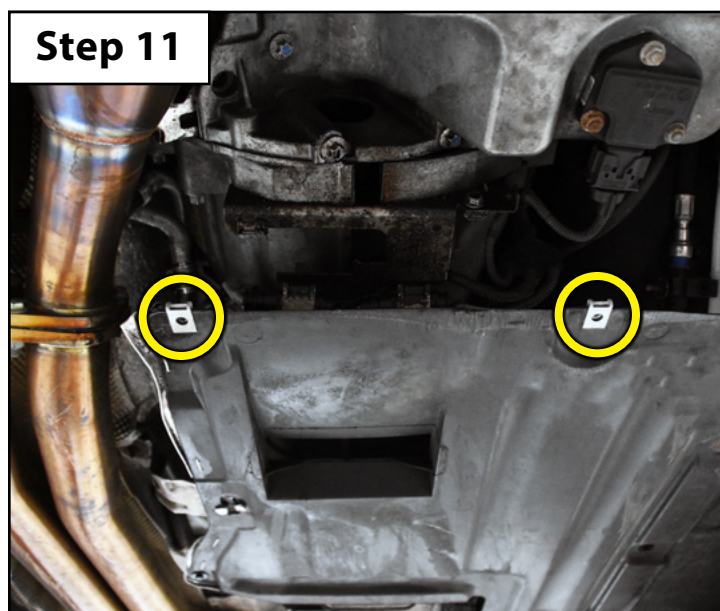
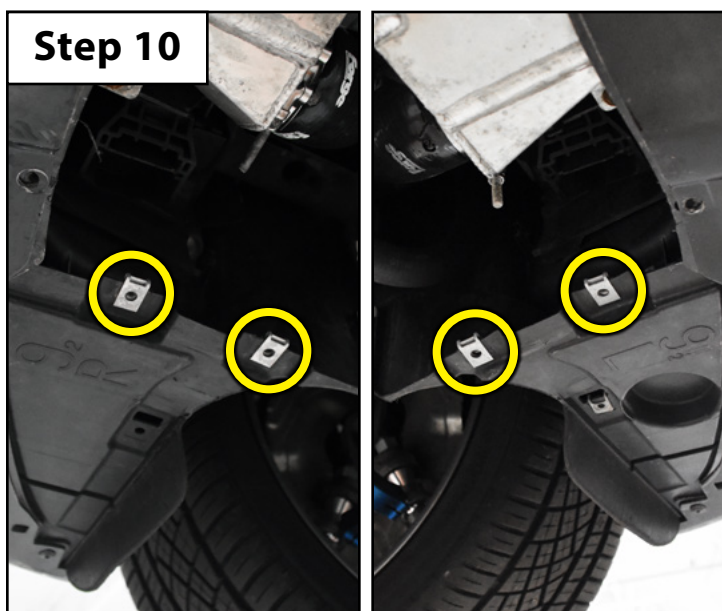
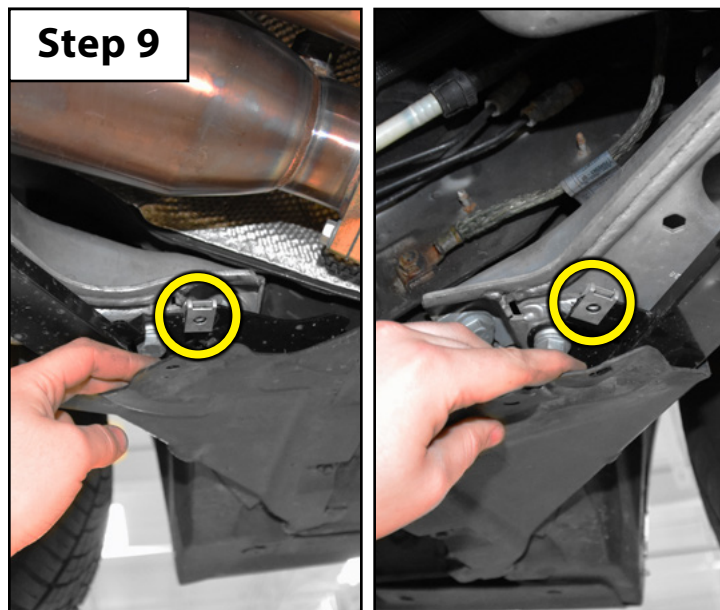
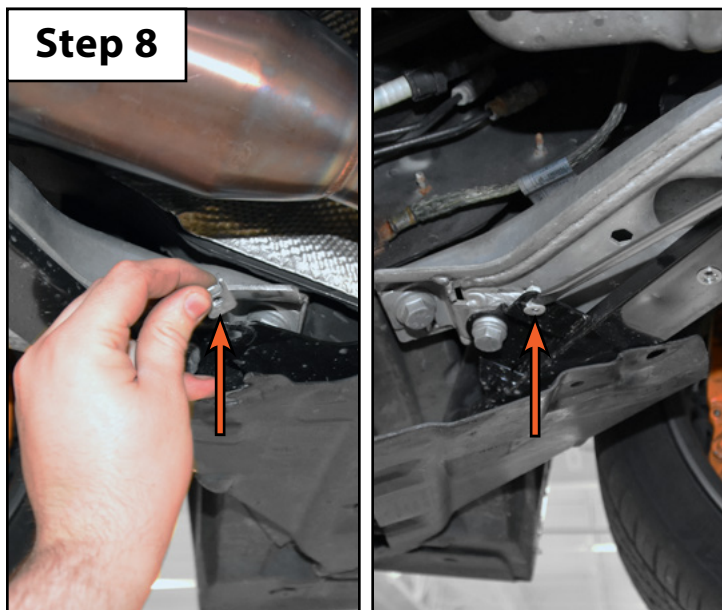
Installing the New Skid Plate Kit

- Step 5**
- Install the new skid plate bracket into the riv-nuts we installed in Step 4 using two of the provided M6x20mm screws (arrows in the **Step 5 Photo**).
- Step 6**
- Note the locations of the holes in the subframe brace (circled in **BLUE** in the **Step 6 Photo**).
 - These are the locations where we will be installing the remaining riv-nuts in the next step.
- Step 7**
- Follow the same process outlined in Step 3 to install the remaining riv-nuts.
 - Due to limited clearance inside the subframe brace, the end of the bolt comes into contact with the inside of the tubing, preventing the riv-nut from being fully seated into the hole.
 - Doing so will create a gap between the riv-nut and the mounting hole (shown in the **Step 7a Photo** below). This gap will allow the riv-nut to spin if you attempt to mount a bolt in the hole.
 - We have included a shorter riv-nut tool bolt in your hardware kit which creates enough space to allow the riv-nut to be fully inserted without any contact (shown in the **Step 7b Photo** below). **Be sure to use the shorter bolt for this step.** You can then expand the riv-nut as we did before, just be sure that the lip on the riv-nut remains fully flush while expanding.



Installing the New Skid Plate Kit

- Step 8**
 - Pry the plastic expanding nut and speed clip out of the ends of the subframe brace (arrows in the **Step 8 Photos**).
- Step 9**
 - Install two of the provided clip nuts in the place of the fasteners we just removed (circled in **YELLOW** in the **Step 9 Photos**).
- Step 10**
 - Pry the four clip nuts off of the lower fender liners and install four of the provided clip nuts in their place (circled in **YELLOW** in the **Step 10 Photos**).
- Step 11**
 - Pry the two speed nuts off of the transmission belly pan and install two of the provided clip nuts in their place (circled in **YELLOW** in the **Step 11 Photo**).



Installing the New Skid Plate Kit

- Step 12**
- Lift the skid plate into position.
 - Loosely install the four M6x16mm bolts into place. ●
 - Loosely install the fifteen M6x20mm bolts into place. ●
 - We've included one spare M6x20mm bolt with the kit which will not be used.
 - Adjust the skid plate as needed for proper fitment, then hand tighten all of the fasteners until snug.
 - Recheck all fasteners after the vehicle has been driven 500 miles.

