

INTRODUCTION

Turner Motorsport BMW F2x/F3x B58 Carbon Fiber Intake System

Installing our carbon fiber intake system is an enjoyable project that an experienced technician could perform in an hour or less, plan accordingly based on your own experience level. This system is more than just "eye candy", there is no easier way to boost engine performance than by removing the restrictive stock intake system. Optional extras include a gloss carbon fiber air box lid and heat reflective tape for the heat shield!

Before you begin, read and familiarize yourself with these instructions and make sure you have all the required tools on hand. Thank you for purchasing our BMW B58 carbon fiber intake system, we appreciate your business!



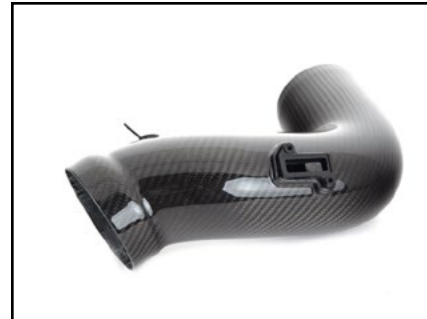
TABLE OF CONTENTS

Kit Contents.....	pg.3
Installation and Safety Information.....	pg.5
Installing the New Intake System.....	pg.6

KIT CONTENTS - OPEN SYSTEMS



F2x/F3x B58 heat shield - **QTY 1**



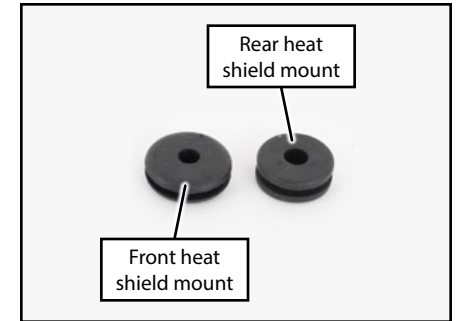
Carbon fiber intake tube - **QTY 1**



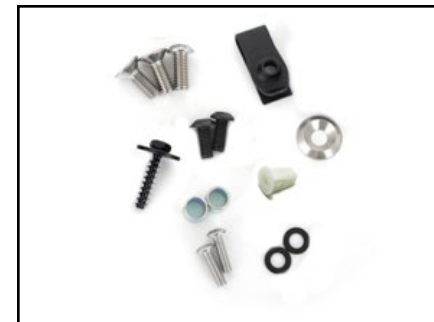
Silicone hose coupler w/clamps



Air filter w/clamp - **QTY 1**

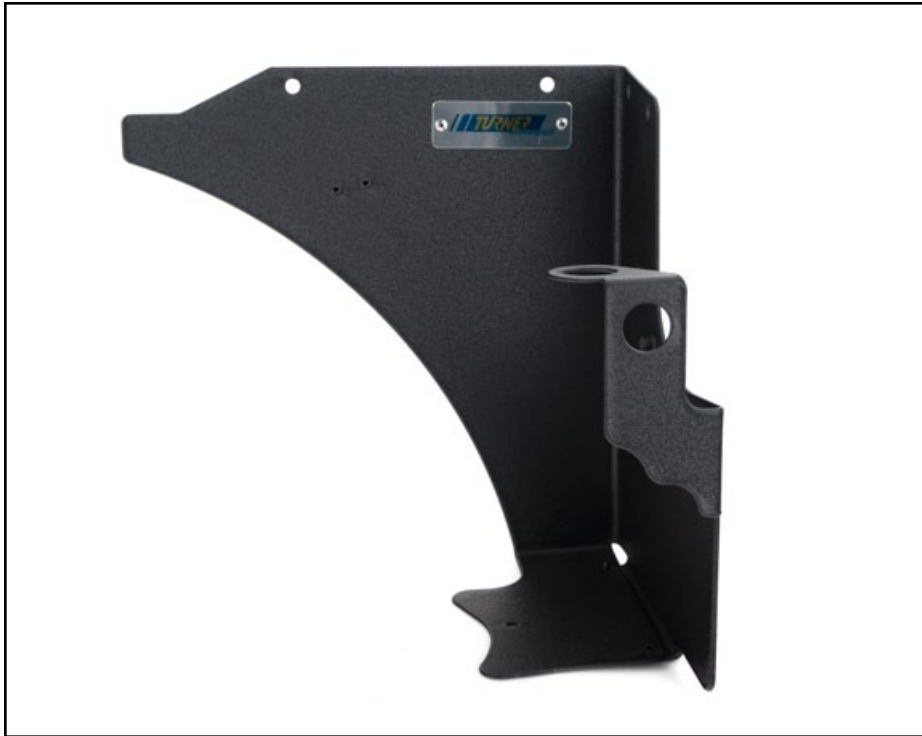


Mounting grommets - **QTY 1ea**

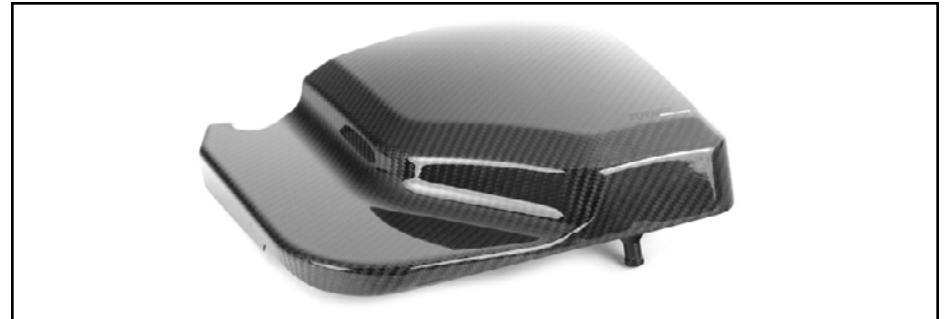


Installation hardware

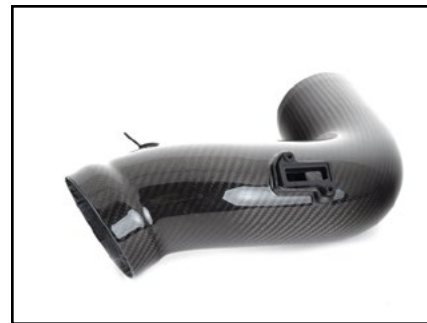
KIT CONTENTS - ENCLOSED SYSTEMS



F2x/F3x B58 heat shield - **QTY 1**



F2x/F3x B58 carbon fiber air box lid - **QTY 1**



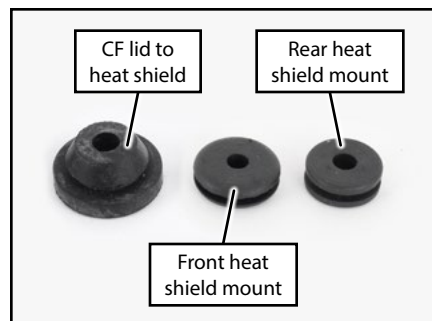
Carbon fiber intake tube - **QTY 1**



Silicone hose coupler w/clamps



Air filter w/clamp - **QTY 1**



Mounting grommets - **QTY 1ea**



Installation hardware



Rubber edge trim - **24" length**

INSTALLATION NOTES

- **RH** refers to the *passenger side* of the vehicle.
- **LH** refers to the *driver side* of the vehicle.
- Always use the proper torque specifications.
- If applicable to this installation, torque specifications will be listed throughout the document and at the end as well.
- Please read all of these instructions and familiarize yourself with the complete process **BEFORE** you begin.

GENERAL PREPARATION AND SAFETY INFORMATION

Turner Motorsport cares about your health and safety, please read the following safety information. This information pertains to automotive service in general, and while it may not pertain to every job you do, please remember and share these important safety tips.

- Park your car in a safe, well lit, level area.
- Shut the engine off and remove the key from the ignition switch.
- Make sure any remote start devices are properly disabled.
- **ALWAYS** wear safety glasses.
- Make sure the parking brake is applied until the vehicle is safely lifted and supported.
- Whether lifting a vehicle using an automotive lift or a hydraulic jack, be sure and utilize the factory specified lift points.
- Lifting a vehicle in an incorrect location can cause damage to the suspension/running gear.
- **ALWAYS** support the vehicle with jack stands.
- **ALWAYS** read and follow all safety information and warnings for the equipment you are using.



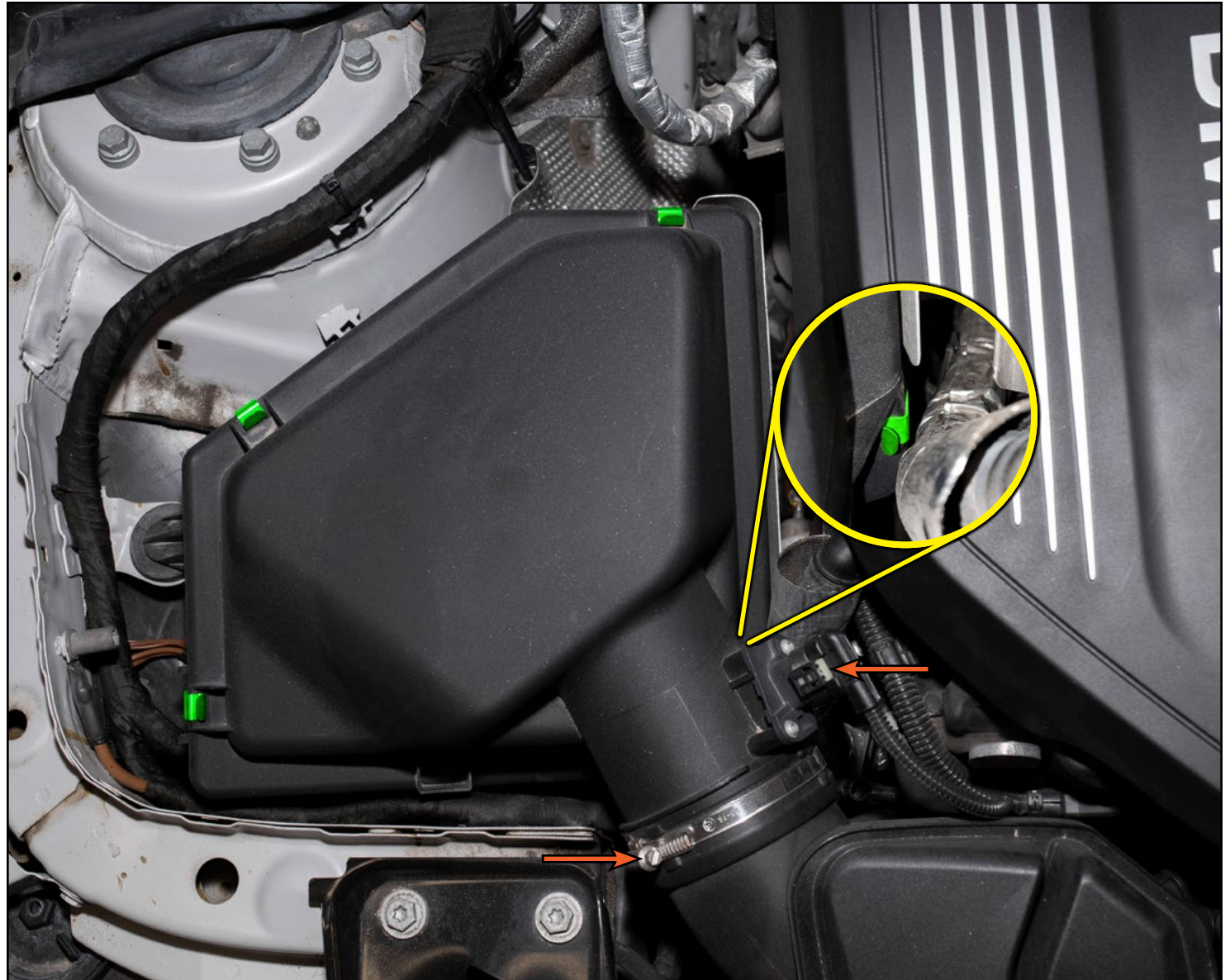
NEVER get underneath a vehicle that is supported only by a jack, and **ALWAYS** make sure that the vehicle is securely supported on jack stands.

INSTALLING THE NEW INTAKE SYSTEM

Step 1:

Release the clips which secure the stock air box lid (highlighted in **GREEN** in the photo on the right). The clip which is located underneath the intake tube will be a bit more difficult to reach (highlighted in **GREEN** in the **YELLOW** inset photo).

Release the MAF sensor connector and loosen the intake tube hose clamp (arrows in the photo on the right).



INSTALLING THE NEW INTAKE SYSTEM

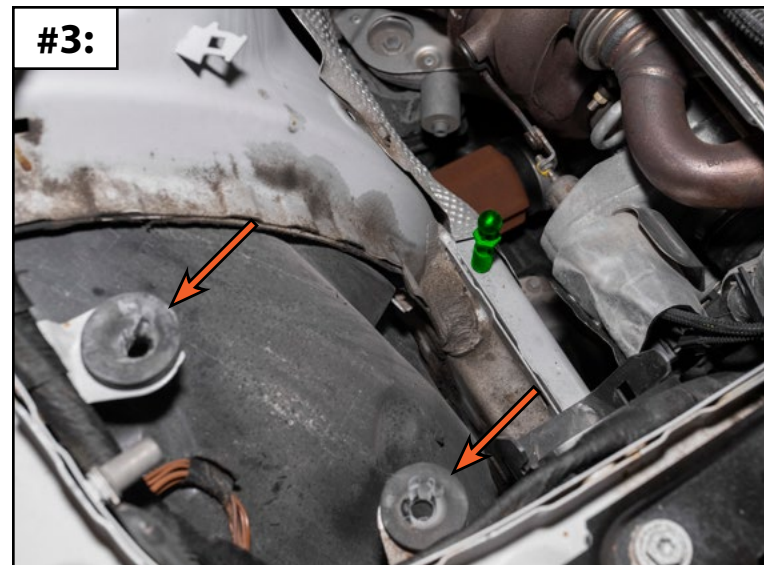
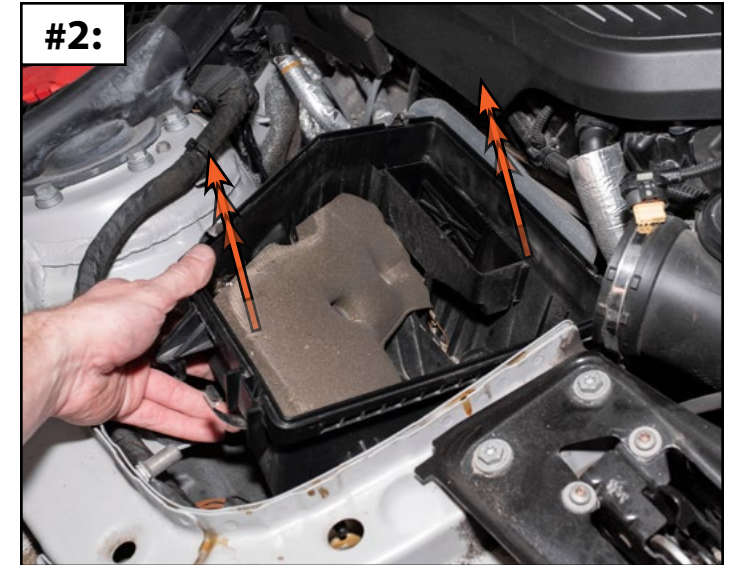
Step 2:

Pull the intake tube off of the air box lid, then remove the lid from the engine bay (**Photo #1**).

Remove the air box from the engine bay by pulling upward firmly to release it from the mounting grommets (**Photo #2**).

Locate and remove the 16mm standoff post from the chassis (highlighted in **GREEN** in **Photo #3**).

The other two mounting grommets will not be used by the new intake system, but they can remain in place (arrows in **Photo #3**).



INSTALLING THE NEW INTAKE SYSTEM

Step 3:

Loosen the lower hose clamp on the intake tube (highlighted in **GREEN** in **Photo #1**).

Remove the intake tube from the engine bay as shown (**Photo #2**).

Loosely install the new silicone coupler in place of the stock intake tube (**Photo #3**). Tighten the lower clamp until snug, but leave the upper clamp loose for now.



INSTALLING THE NEW INTAKE SYSTEM

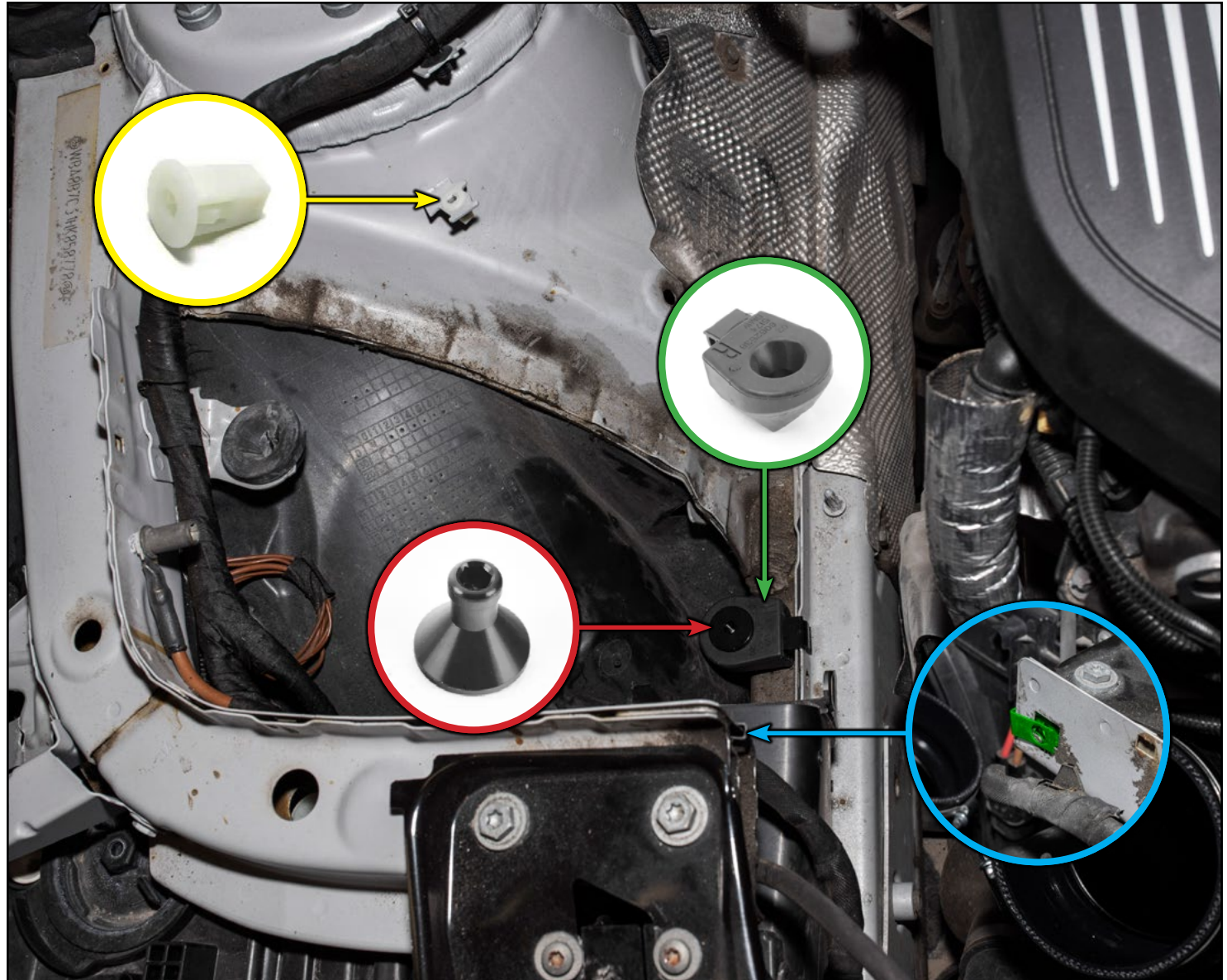
Step 4:

Install the new expanding nut (**YELLOW** inset photo) into the bracket on the RH strut tower.

Clip the bottom support (**GREEN** inset photo) onto the chassis just behind the headlight.

Push the billet standoff (**RED** inset photo) into the bottom support.

Install the M6 clip nut (highlighted in **GREEN** in the **BLUE** inset photo) into place in the location shown.

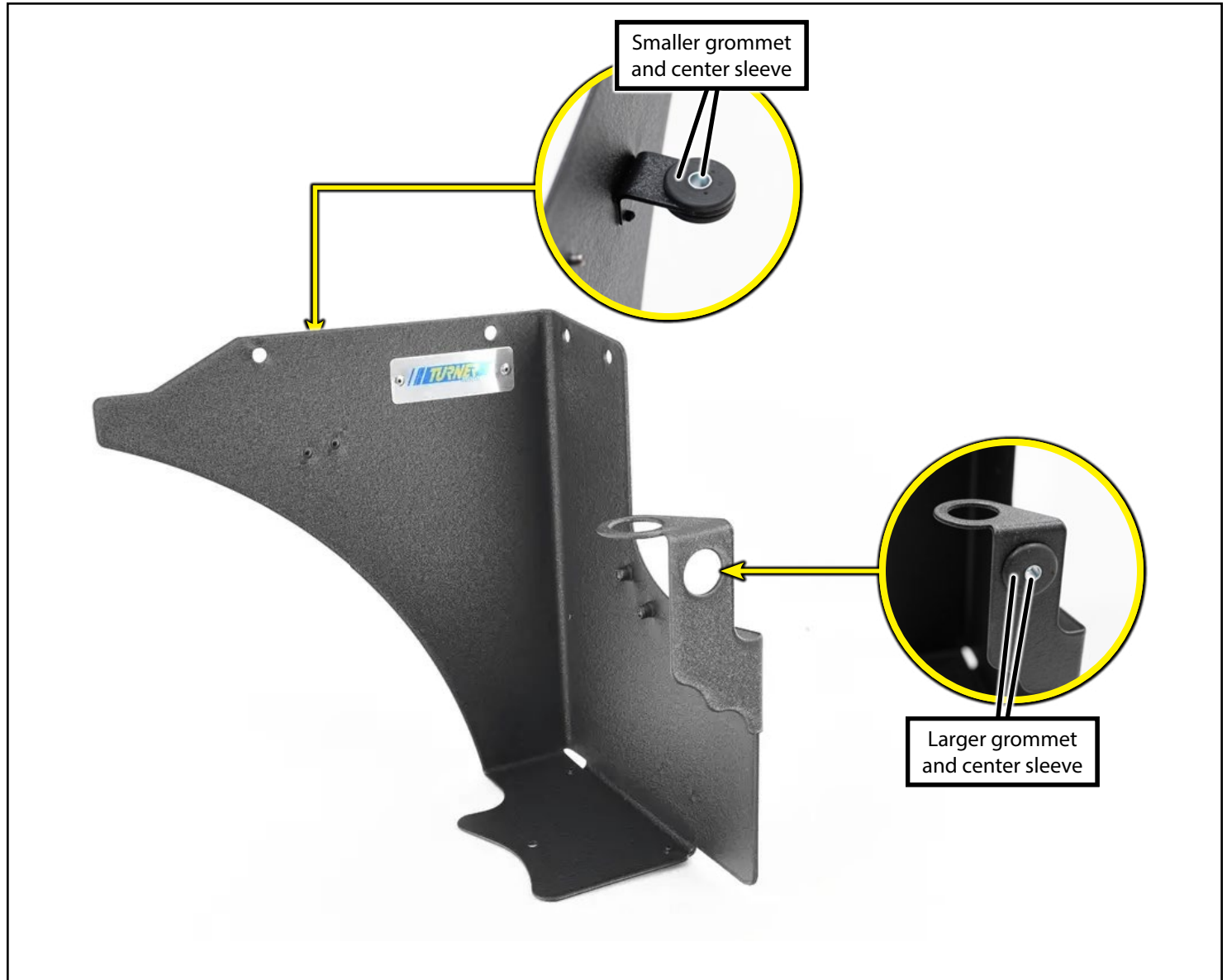


INSTALLING THE NEW INTAKE SYSTEM

Step 5:

Install both of the provided rubber grommets into the heat shield (shown in the photos on the right). Please note that the grommets are different sizes and need to be installed into the correct locations.

Push the provided center sleeves into each grommet.



INSTALLING THE NEW INTAKE SYSTEM

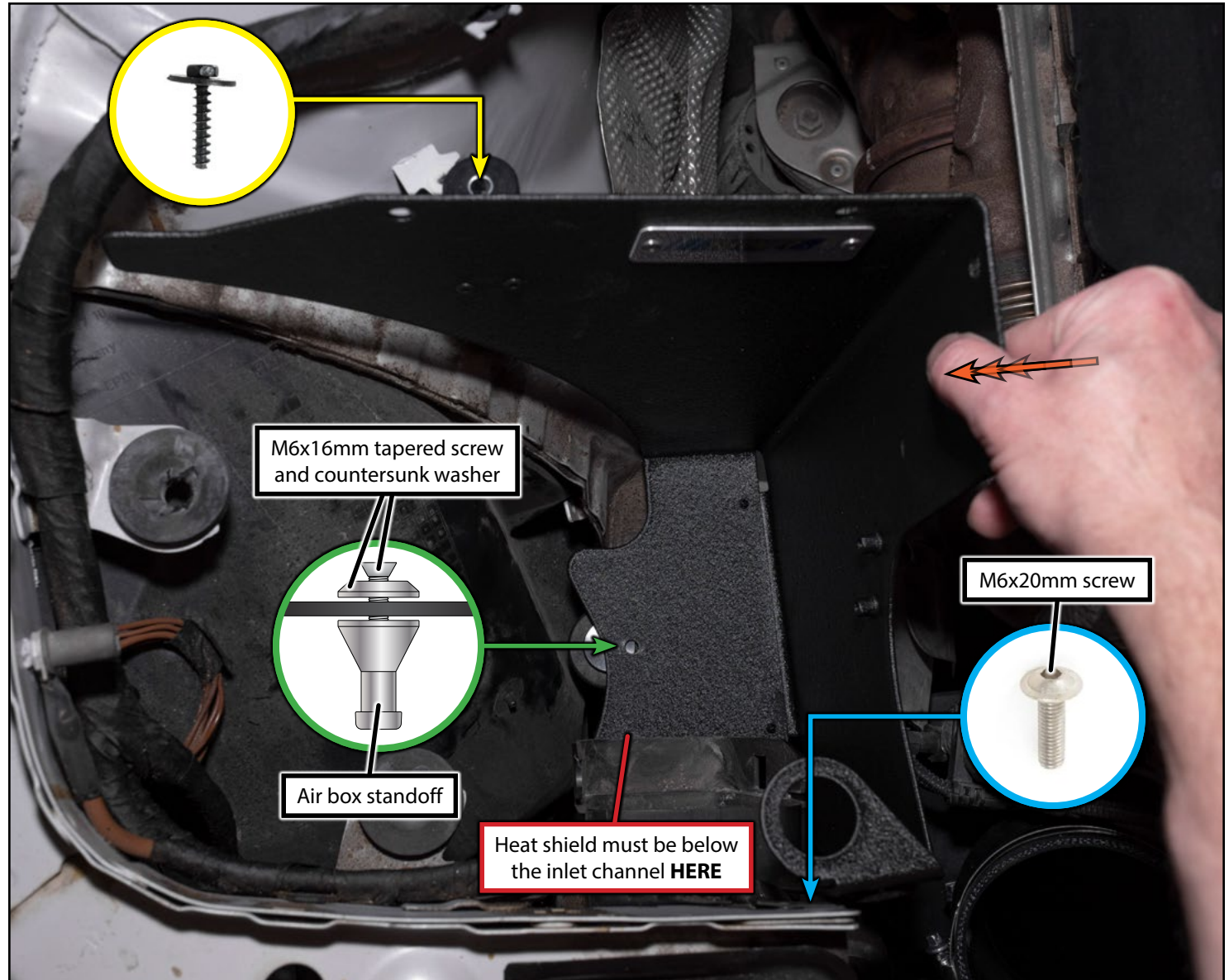
Step 6:

Install the heat shield into position. Be sure to get the heat shield underneath the plastic inlet channel (**RED** text box in the photo on the right).

Install the BMW self tapping screw w/large washer into the rear mounting grommet (**YELLOW** inset photo).

Install the M6x16mm tapered screw and countersunk washer through the lower mount hole and into the air box standoff (**GREEN** inset photo).

Install the M6x20mm screw through the front mounting grommet and into the clip nut we installed in the chassis back on [Page 8](#).

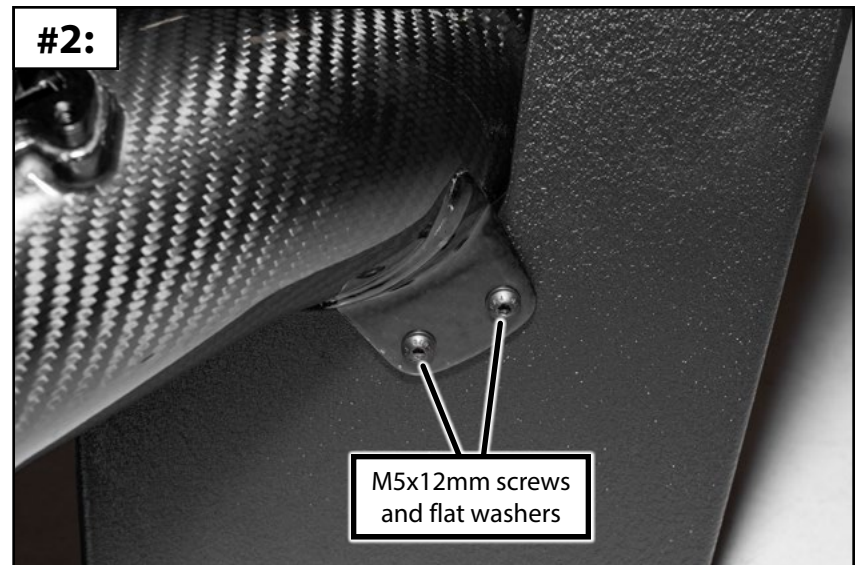


INSTALLING THE NEW INTAKE SYSTEM

Step 7: 3mm Hex (Allen)

Slide the carbon fiber intake tube into the silicone coupler (**Photo #1**). Tighten the clamps on the silicone coupler until snug (not shown).

Secure the carbon fiber intake tube to the heat shield using two of the provided M5x12mm screws and M5 flat washers (**Photo #2**).



INSTALLING THE NEW INTAKE SYSTEM



If you purchased an **OPEN** intake system:

- Slide the air filter onto the carbon fiber intake tube and tighten the clamp until snug.
- Transfer the MAF sensor from the stock air box to the new carbon fiber intake tube.
- ***Your installation is now complete!***



If you purchased an **ENCLOSED** intake system:

- Please skip ahead to [Page 14](#) for the installation of your new carbon fiber air box lid.

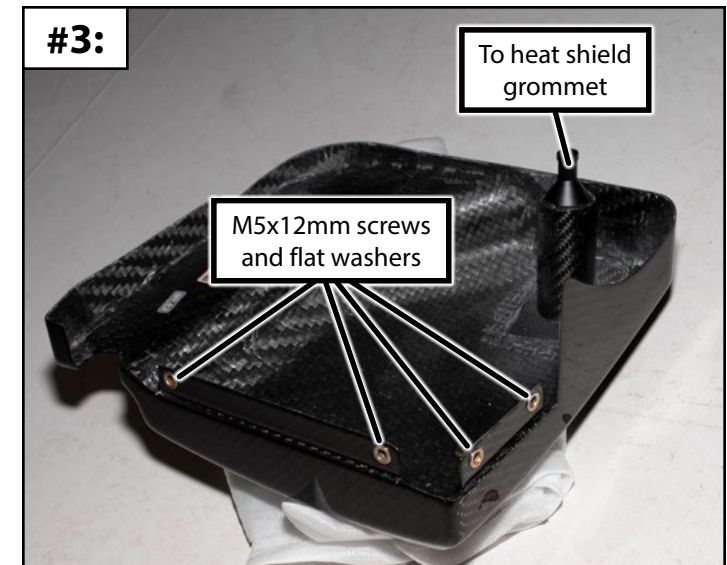
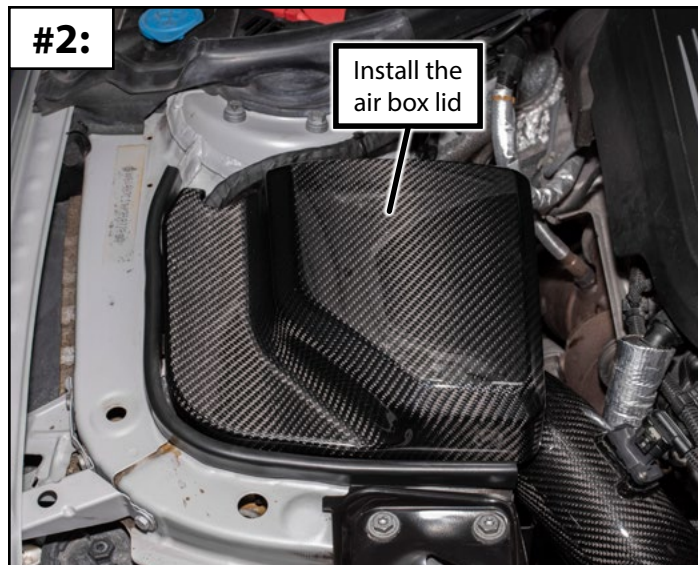
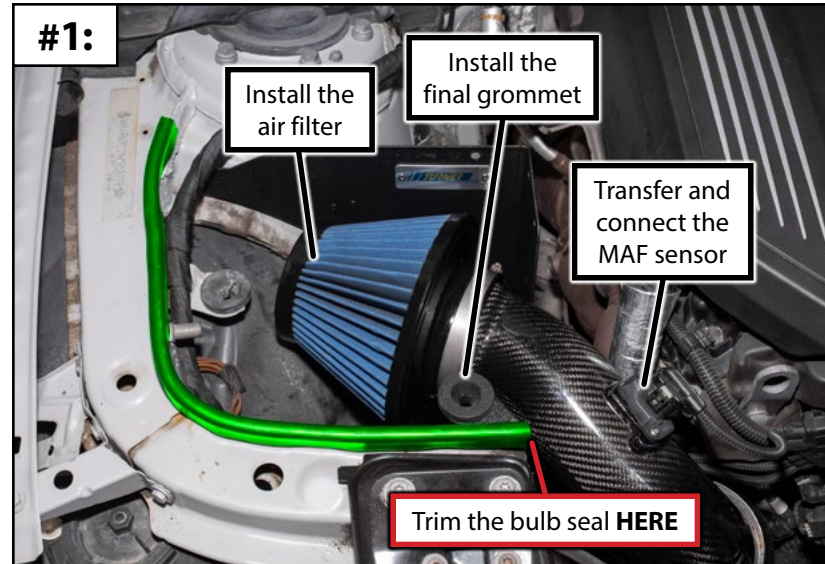
INSTALLING THE NEW INTAKE SYSTEM - ENCLOSED SYSTEMS ONLY

Step 8:

Slide the air filter onto the carbon fiber intake tube and tighten the clamp until snug. Transfer the MAF sensor from the stock air box to the new carbon fiber intake tube. Install the final grommet into the heat shield (**Photo #1**).

Apply the rubber edge trim to the area highlighted in **GREEN** in **Photo #1**. Trim the edge trim as indicated by the **RED** text box.

Now it's finally time to install the air box lid (**Photo #2**). Line up the stud on the bottom side of the lid (**Photo #3**) with the grommet we installed into the heat shield in **Photo #1**. Push the lid downward to seat the stud into the grommet. Install the four remaining M5x12mm screws through the heat shield and into the lid (**Photo #3**).



Your Intake System installation is complete!



These instructions are provided as a courtesy by Turner Motorsport

Proper service and repair procedures are vital to the safe, reliable operation of all motor vehicles as well as the personal safety of those performing the repairs. Standard safety procedures and precautions (including use of safety goggles and proper tools and equipment) should be followed at all times to eliminate the possibility of personal injury or improper service which could damage the vehicle or compromise its safety.

Although this material has been prepared with the intent to provide reliable information, no warranty (express or implied) is made as to its accuracy or completeness. Neither is any liability assumed for loss or damage resulting from reliance on this material. SPECIFICALLY, NO WARRANTY OF MERCHANTABILITY, FITNESS FOR A PARTICULAR PURPOSE OR ANY OTHER WARRANTY IS MADE OR TO BE IMPLIED WITH RESPECT TO THIS MATERIAL. In no event will Turner Motorsport, Incorporated or its affiliates be liable for any damages, direct or indirect, consequential or compensatory, arising out of the use of this material.