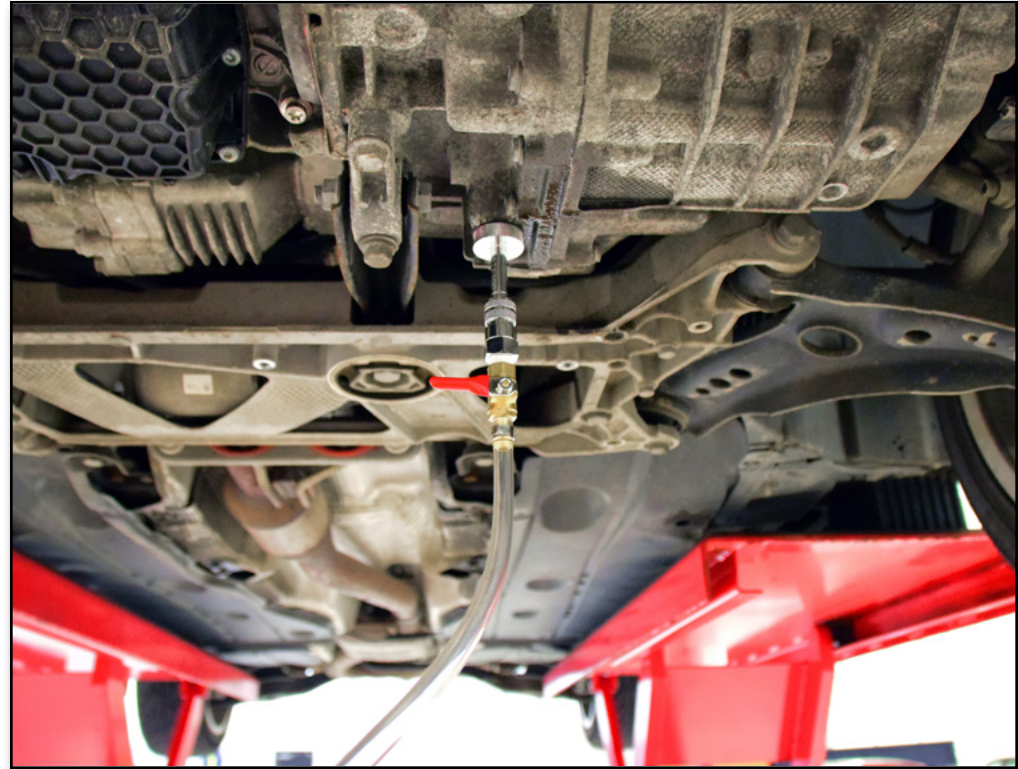




schwaben®

Manual Extract and Discharge Pump User Instructions



The Schwaben Manual Extract and Discharge Pump has a large 10.5 liter capacity, large enough to fill most transmissions without needing to refill the unit. Simply flip the lever to “**IN**” and use the sturdy and ergonomic handle to pump the unit full of fresh fluid. This pump comes complete with all of the fittings and adapters you will need, and it comes in a custom molded case for easy storage. Select the appropriate adapter using the included guide and with the lever flipped to the “**OUT**” position, pump the handle to quickly and effectively fill the transmission through the fill port.

NOTE: This tool is designed to refill the transmission **AFTER** it has been drained.

SCHWABEN MANUAL EXTRACT AND DISCHARGE PUMP

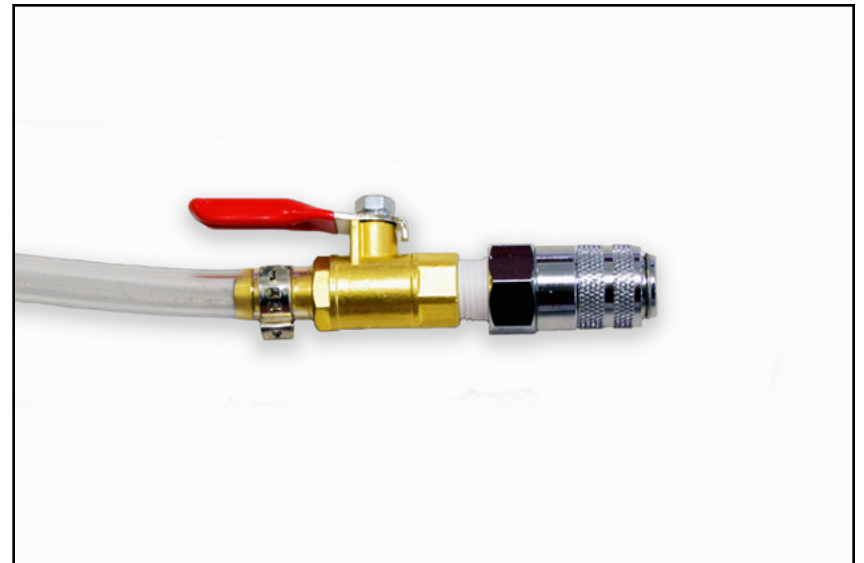
Step 1:

Wrap the threads of the quick-connect fitting with Teflon thread tape to prevent leaks.



Step 2:

Screw the quick-connect fitting into valve on the main hose as shown.



SCHWABEN MANUAL EXTRACT AND DISCHARGE PUMP

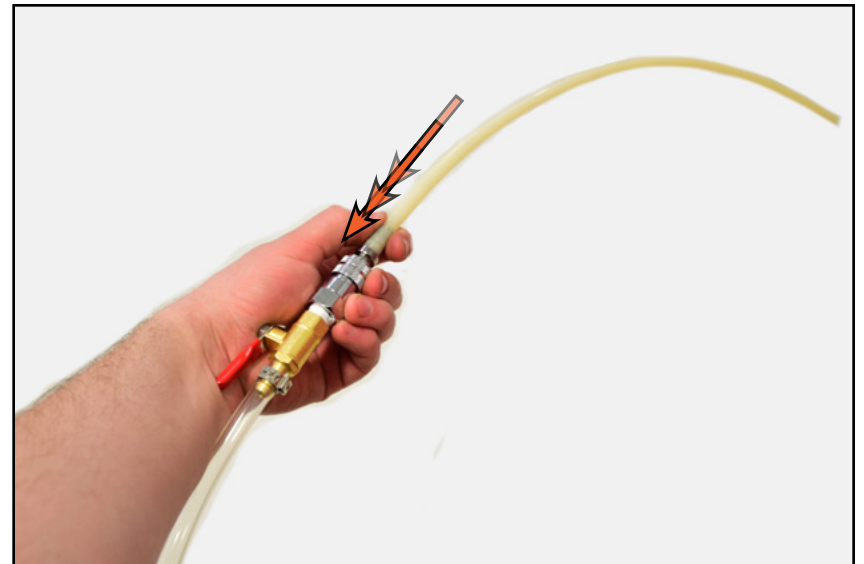
Step 3:

Connect the other end of the main hose into the quick-connect fitting on the pump as shown.



Step 4:

Connect the rigid plastic fill tube to the quick-connect fitting as shown.



SCHWABEN MANUAL EXTRACT AND DISCHARGE PUMP

Step 5:

Switch the lever (arrow) to the **"IN"** position.



Step 6:

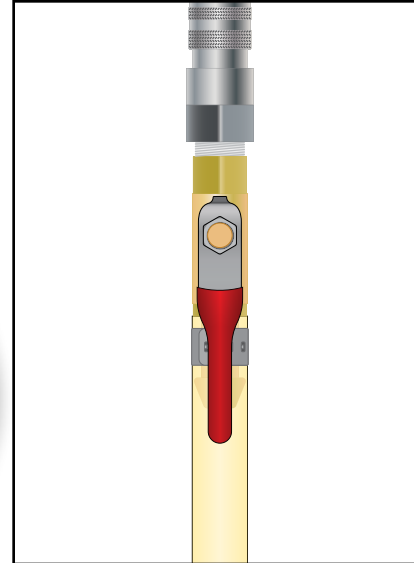
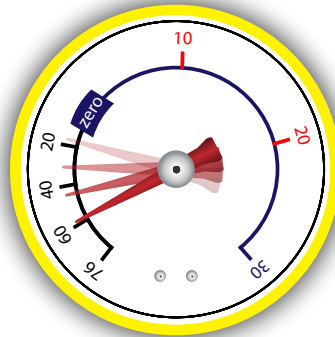
Place the plastic fill tube down into the fluid bottle or tank as shown.



SCHWABEN MANUAL EXTRACT AND DISCHARGE PUMP

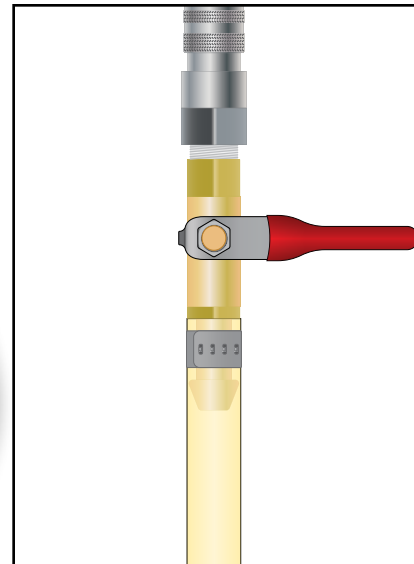
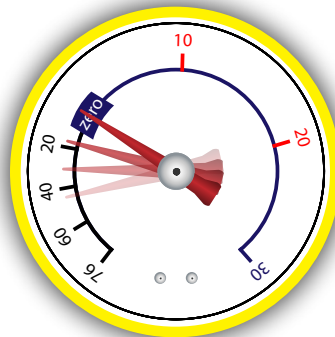
Step 7:

With the valve on the main hose open (as shown in the illustration on the left), pump the handle up and down to fill the unit with fluid. The needle on the gauge should move counter-clockwise as shown below as a vacuum is drawn.



Step 8:

Once the unit is full, shut the valve and press the button labeled "PUSH" to release any built up pressure. The needle on the gauge should move back to "zero" as shown below.



SCHWABEN MANUAL EXTRACT AND DISCHARGE PUMP

Step 9:

Safely lift and support the car and drain the old fluid from below as shown.



Step 10:

Using the provided guide, select the appropriate adapter for your vehicle.



SCHWABEN MANUAL EXTRACT AND DISCHARGE PUMP

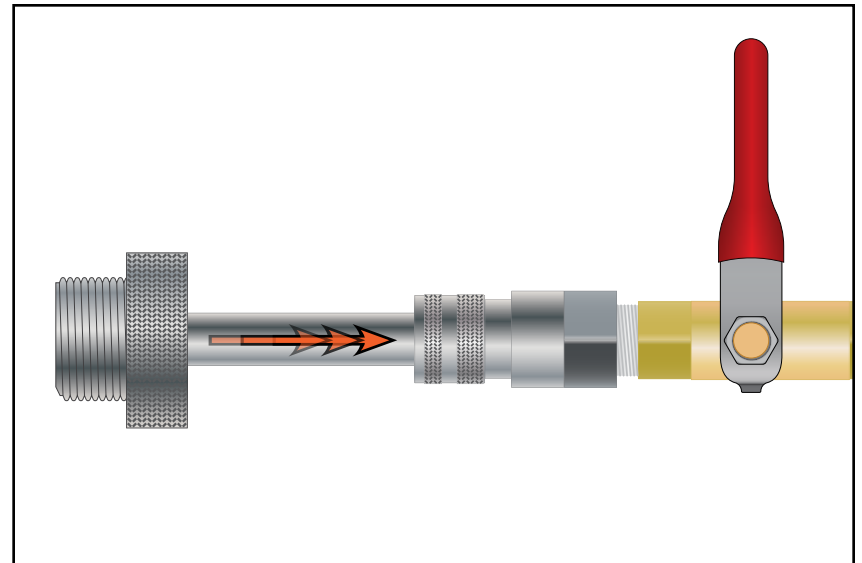
Step 11:

Optionally, you can slide the adapter through the slot in the provided funnel as shown. This will ensure that any excess fluid that drains from the transmission will be caught by the funnel and collected in the bottle.



Step 12:

Slide the adapter into the quick connect fitting on the main valve as shown.



SCHWABEN MANUAL EXTRACT AND DISCHARGE PUMP

Step 13:

Install the adapter into the manufacturer specified fill point in the transmission.



Step 14:

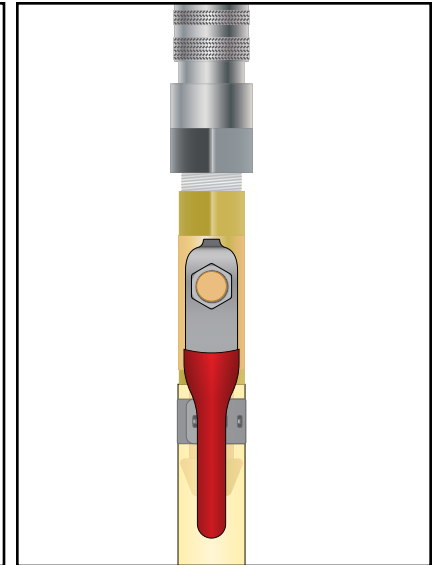
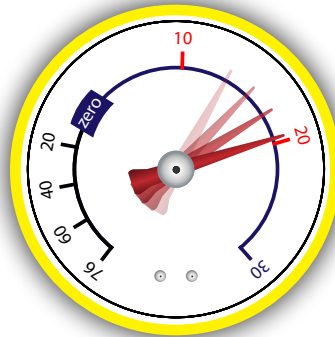
Switch the lever (arrow) to the "OUT" position.



SCHWABEN MANUAL EXTRACT AND DISCHARGE PUMP

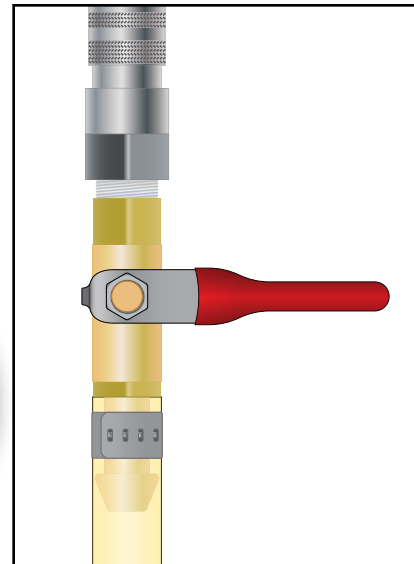
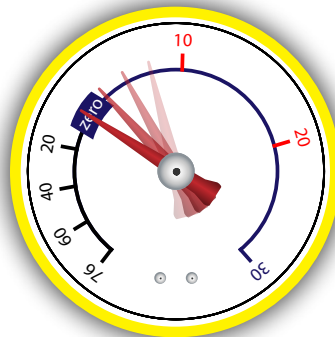
Step 15:

Pump the handle up and down until the needle reaches 20 PSI, then open the valve to allow the fluid to flow through the hose and into the transmission.



Step 16:

Once the transmission is filled, shut the valve and press the button labeled "PUSH" to release any built up pressure. The needle on the gauge should move back to "zero".



SCHWABEN MANUAL EXTRACT AND DISCHARGE PUMP

Step 17:

Remove the adapter from the vehicle and replace the transmission fill plug if equipped. Refer to your vehicle's service manual to ensure the fluid is filled to the proper level.



Step 18:

Rotate the "push" button on the pump counter-clockwise and pull it out to reveal the pour spout. Pour any leftover fluid back into a sealed container to save it for later.

