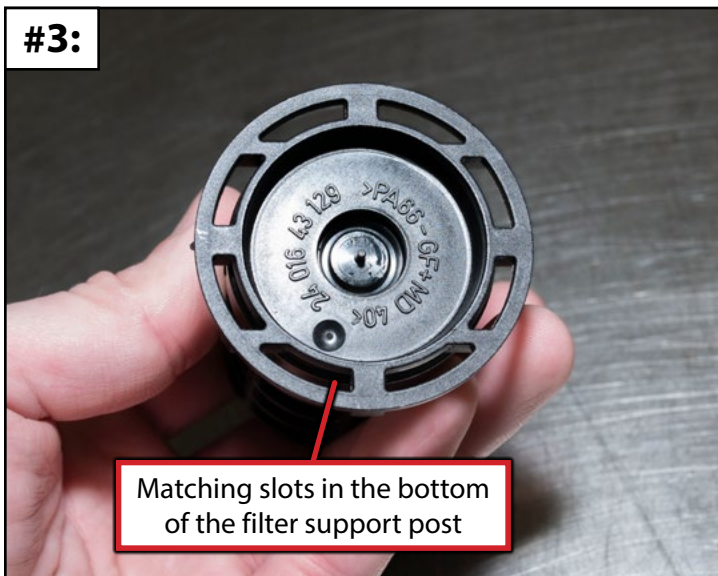


## Section 1: Installation

- Step 1**
- Remove the stock oil filter housing from the engine.
  - The original oil filter housing utilizes a filter support post with an integrated spring-loaded bypass valve, which needs to be transferred to the new billet oil filter housing. To remove this assembly, pull it firmly to one side (shown in **Photo #1**) until it releases from the securing tabs on the bottom of the housing.
- Step 2**
- Note the locations of the securing tabs along the base of the new billet oil filter housing (**Photo #2**).
- Step 3**
- Note the matching slots in the base of the filter support post (**Photo #3**).
- Step 4**
- Align the grooves in the base of the filter support post with the tabs along the base of the billet oil filter housing. Press the filter support post firmly into the housing until it is fully seated (**Photo #4**).
    - This is a press fit and you should feel it “click” into place.
  - Install the new oil filter and o-ring onto the oil filter housing.
  - Thread the oil filter housing into the engine by hand, then torque it to 25 Nm.



Proper service and repair procedures are vital to the safe, reliable operation of all motor vehicles as well as the personal safety of those performing the repairs. Standard safety procedures and precautions (including use of safety goggles and proper tools and equipment) should be followed at all times to eliminate the possibility of personal injury or improper service which could damage the vehicle or compromise its safety.