



Audi B7 RS4 Mesh Style Grille

(for standard
and DTM Edition
bumpers only)

ES2992748

Black/Black Trim

ES2972749

Black/Silver Trim



best viewed in Acrobat® Reader®

This tutorial is provided as a courtesy by ECS Tuning.

Proper service and repair procedures are vital to the safe, reliable operation of all motor vehicles as well as the personal safety of those performing the repairs. Standard safety procedures and precautions (including use of safety goggles and proper tools and equipment) should be followed at all times to eliminate the possibility of personal injury or improper service which could damage the vehicle or compromise its safety.

Although this material has been prepared with the intent to provide reliable information, no warranty (express or implied) is made as to its accuracy or completeness. Neither is any liability assumed for loss or damage resulting from reliance on this material. SPECIFICALLY, NO WARRANTY OF MERCHANTABILITY, FITNESS FOR A PARTICULAR PURPOSE OR ANY OTHER WARRANTY IS MADE OR TO BE IMPLIED WITH RESPECT TO THIS MATERIAL. In no event will ECS Tuning, Incorporated or its affiliates be liable for any damages, direct or indirect, consequential or compensatory, arising out of the use of this material.

ECS Tuning RS4 mesh style grilles come in an all matte black finish or matte black with satin silver trim. Both are exact fit parts that require no modification of the front bumper cover. The entire installation can be performed with simple hand tools, including several Torx® screwdrivers.

Kit Contents:

- Grille
- Audi Rings Badge Holder with attachment straps and screws
- Concealment plates for cars with or without parking sensors

Let's do it.

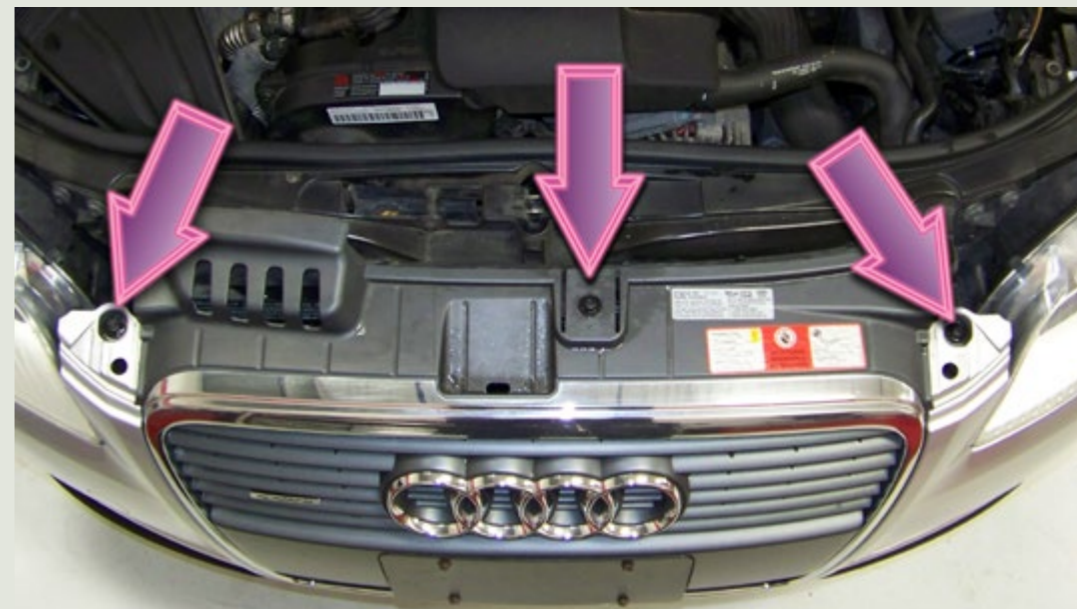
ES2992749



ES2992748

Step 1

- Open the hood.
- Using a T30 Torx® driver, remove the three screws from the top of the grille (arrows).



Step 2

The Schwaben Torx screwdriver set ([ES11417](#)) contains all the Torx sizes you will need for this job.

The complete set includes T10, T15, T20, T25, T27, and T30 drivers with cushion grip handles, packaged in a portable, blow-molded case.



Step 3

Raise the car and remove the front wheels. A wheel hanger stud makes this job a lot easier, especially on a car like this one that has wheel spacers installed.

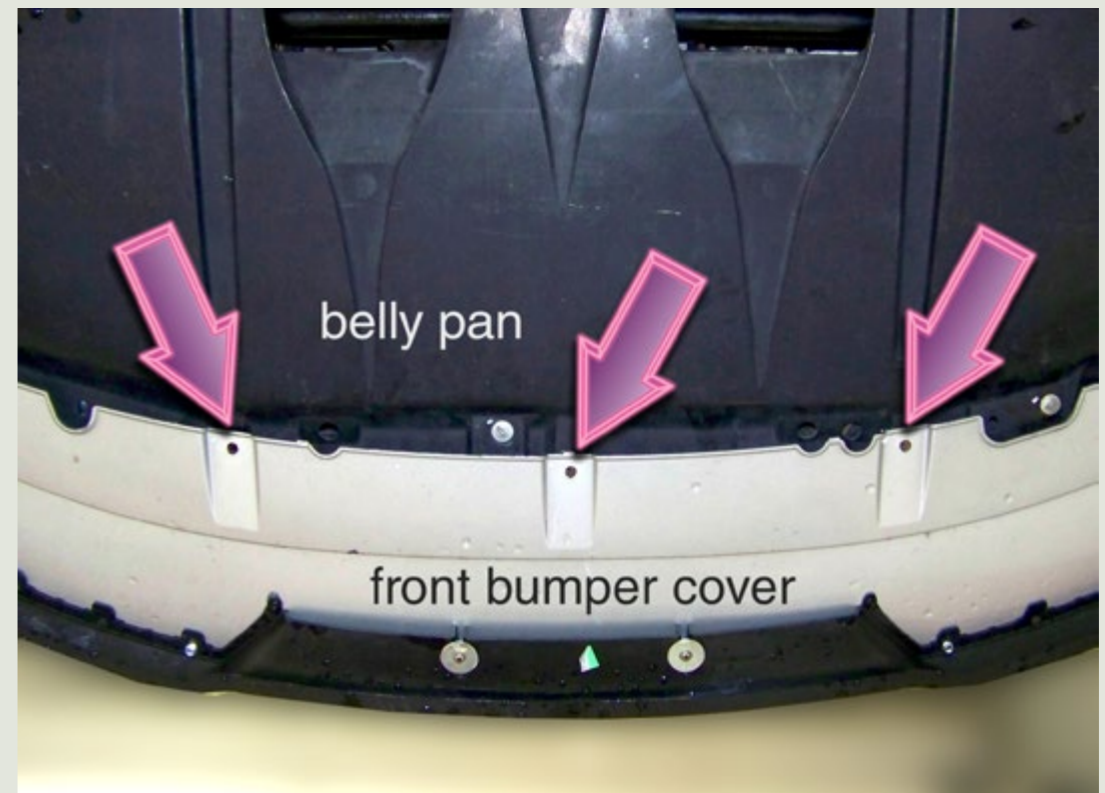
ECS Tuning Wheel Hanger [ES4135](#)

Schwaben® Protecta Sockets [ES2221243](#)



Step 4

Raise the car and remove the three anchor pins from the lower bumper cover (arrows). You don't have to remove the belly pan.



Step 5

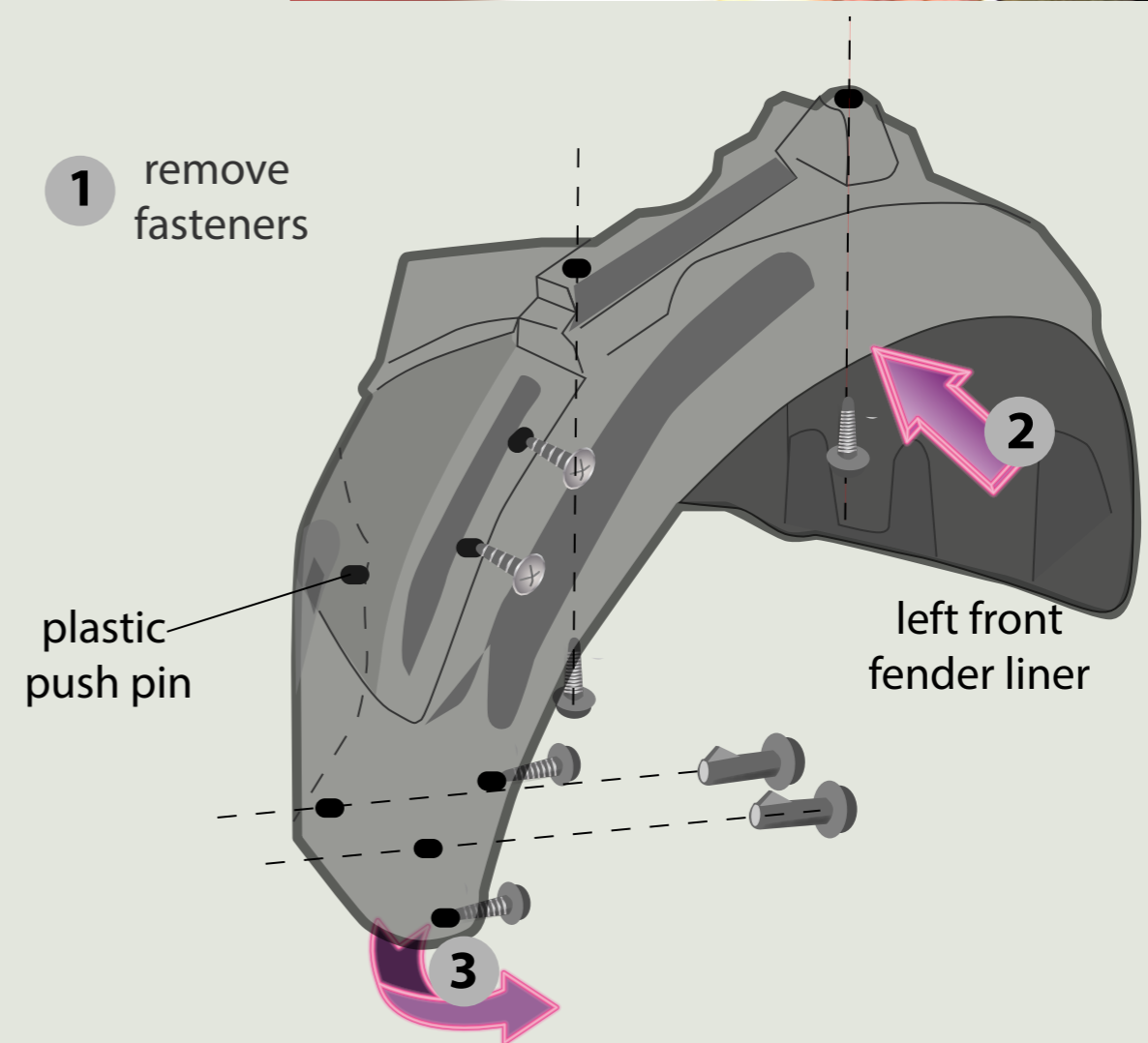
Working inside the fender well, remove the Torx head screws and plastic anchor pins from the fender liners.



Step 6

This image shows the fasteners that must be removed.

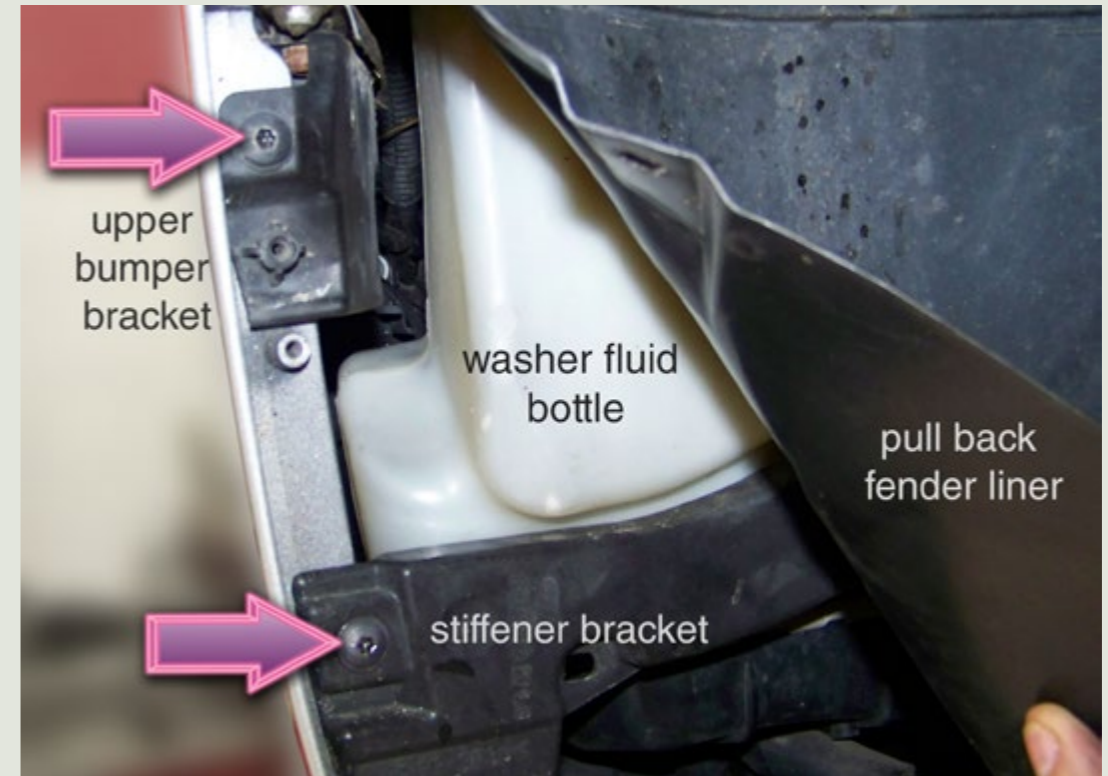
1. Remove the metal screws and plastic anchor pins. Note their location so you reinstall them in their correct locations later.
2. Push the fender liner inward until it clears the fender lip.
3. Pull back on the lower front edge of the fender liner to expose the interior of the bumper cover and the plastic bumper support brackets.



Step 7

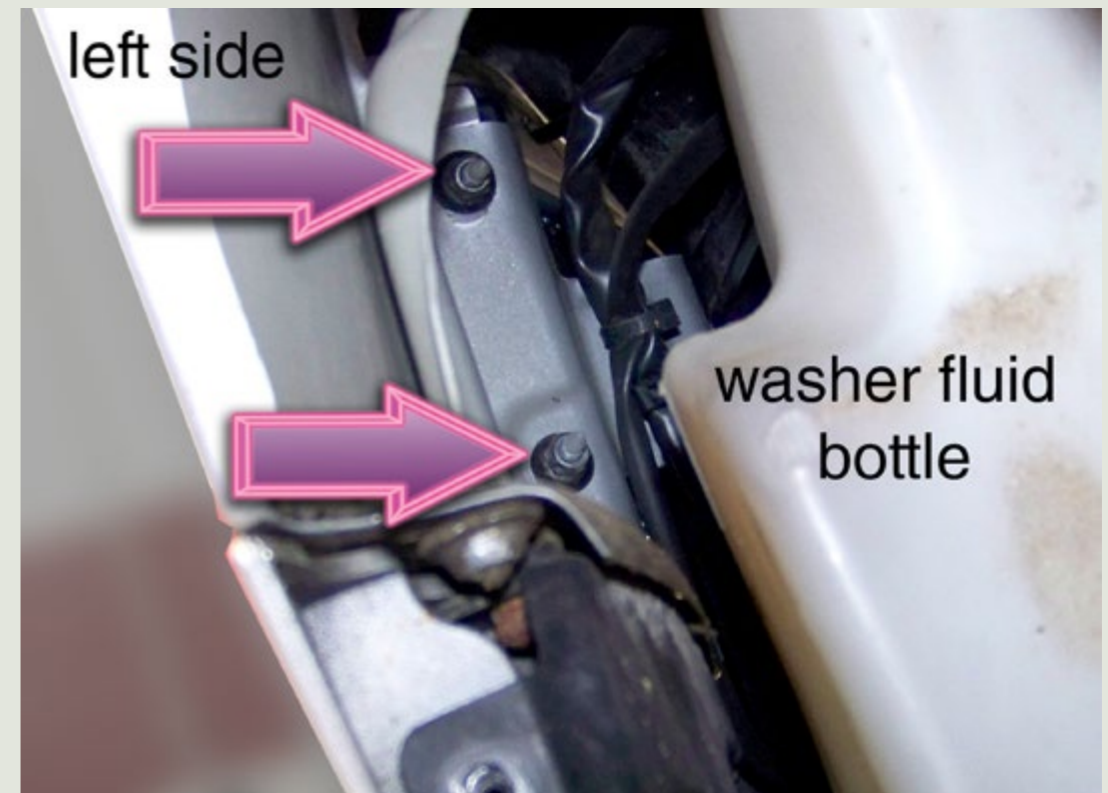
When you pull back the plastic fender liners, you will expose the bumper support brackets beneath. There are two on each side: an upper bumper bracket and a stiffener bracket.

Remove the two T25 threaded screws (arrows).



Step 8

Reach in with a long extension and a 10mm socket and remove the two nuts from the threaded studs that hold the bumper cover tight to the fender. You'll have to reach in past the washer bottle.



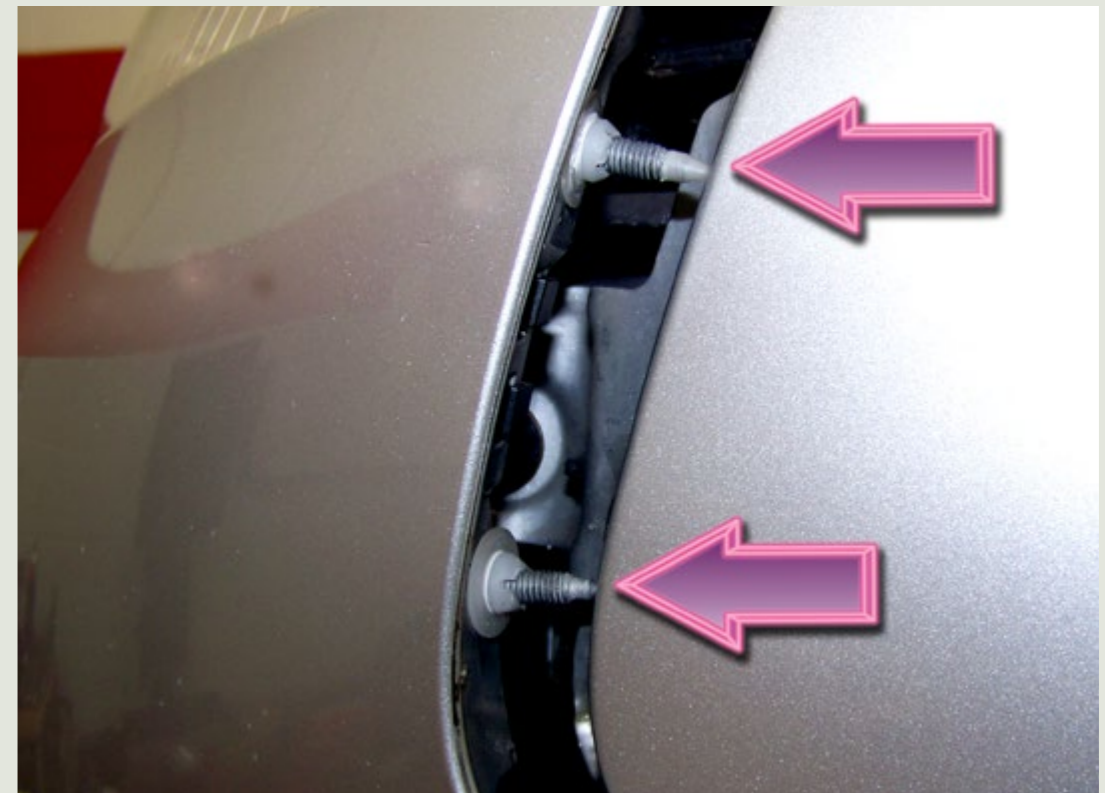
Step 9

Grab the rear edge of the bumper cover and pull straight out to pop the upper edge of the cover out of the top bumper bracket.



Step 10

Grab the bumper cover at the rear and pull it straight forward until the threaded studs in the bumper cover (arrows) clear the edge of the fender.



Step 11

Service Tip: To protect the fender from scratches, place a clean cloth over the top edge of the lower bumper cover.

We also suggest that you slide two short lengths of rubber or silicone tubing over the exposed studs so they can't scratch the paint on the fender.



Step 12

Repeat all these steps on the opposite side of bumper.

Then have an assistant help you as you pull the bumper forward, off the front of the car.

Caution: Pull the bumper forward slowly and stop as soon as the two electrical connector on the left side can be disconnected. Unplug them. Note: The connectors are located at the top left side of the bumper, below the left headlight.



Step 13

Remove the bumper from the car and lay it face down on a clean, soft surface to prevent paint scratching.



Step 14

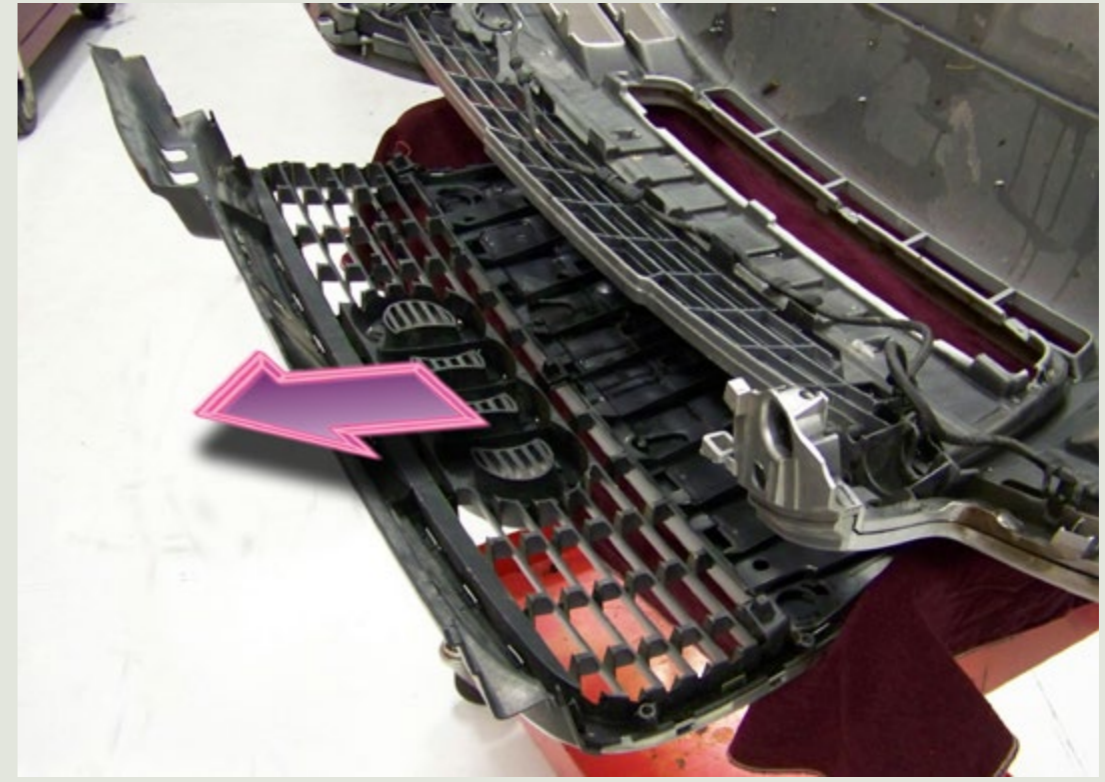
The grille is attached to the front bumper cover with T20 screws.

Remove all perimeter screws, noting their locations.



Step 15

Remove the old grille from the bumper cover when all the screws are removed.



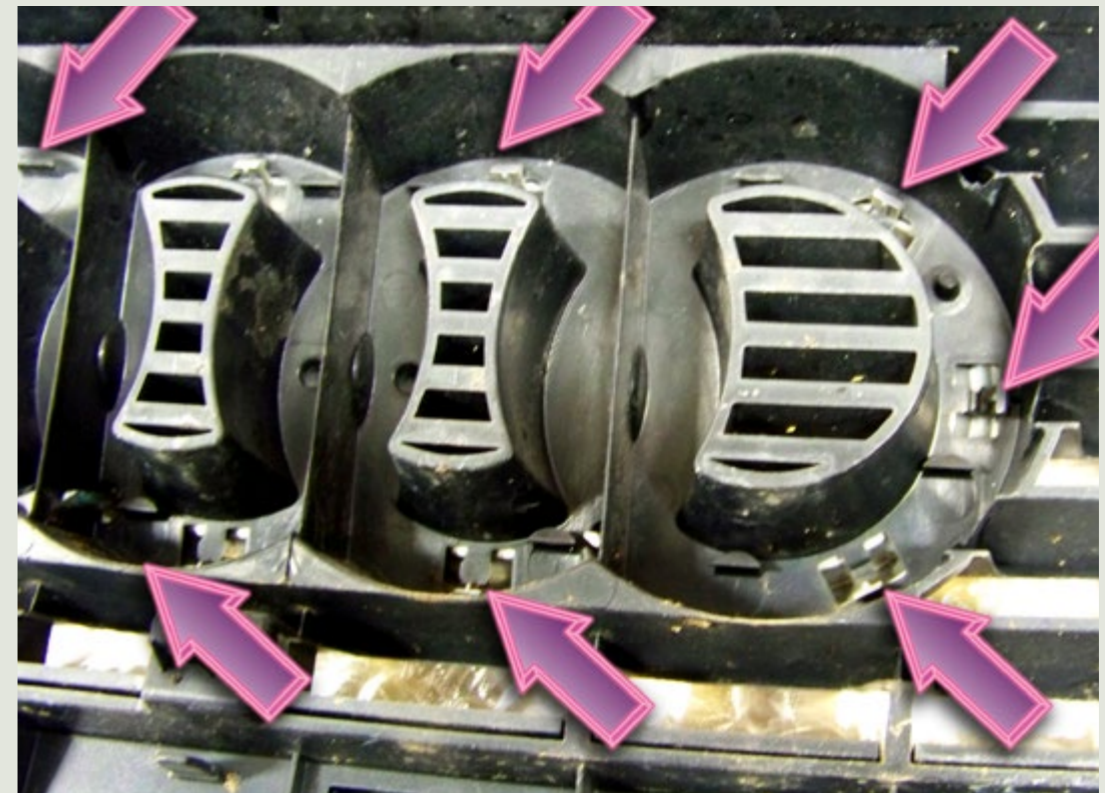
Step 16

Optional: If you want your Audi chrome rings to the new grille, transfer them from the old grille.

Working from the back of the original grille, pry gently on the snap-lock tabs that secure the rings. Pry only far enough to release them.

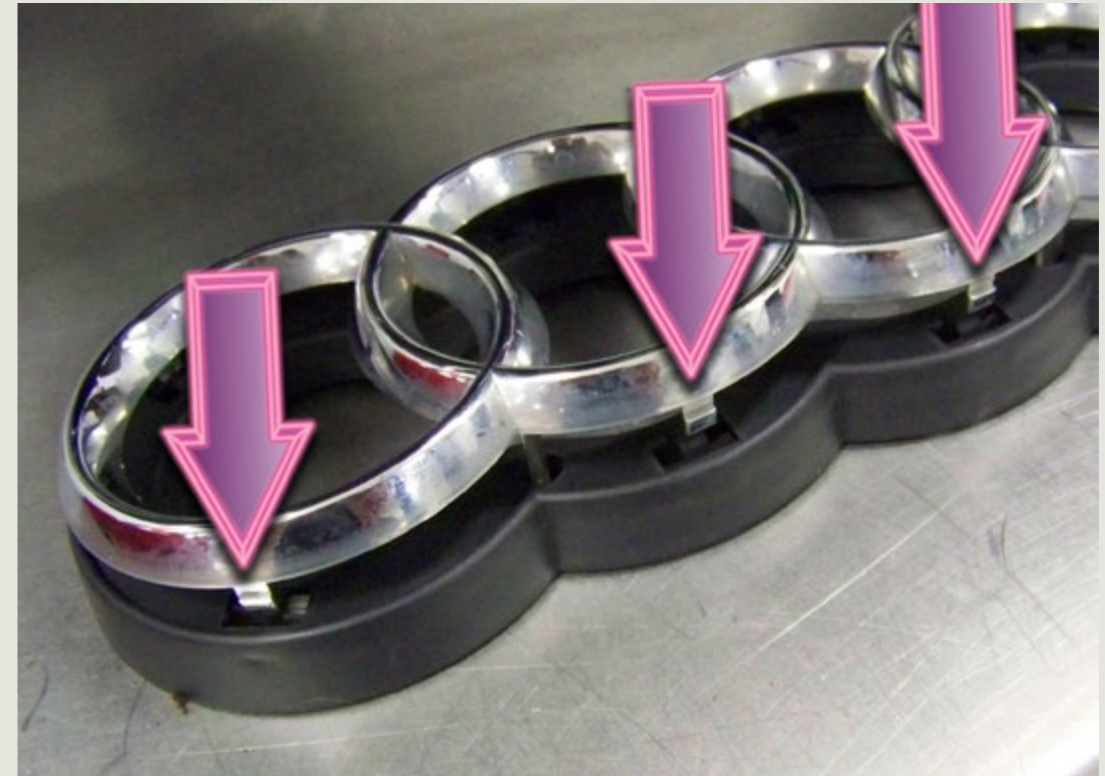
CAUTION: The plastic tabs are brittle and will break easily. Pry only as far as you need to to release the tabs. Push against the rear of the rings at the same time with a thin screwdriver to pop them free as the tabs release.

Service Tip: If you need a new set of rings, order [ES451517](#).



Step 17

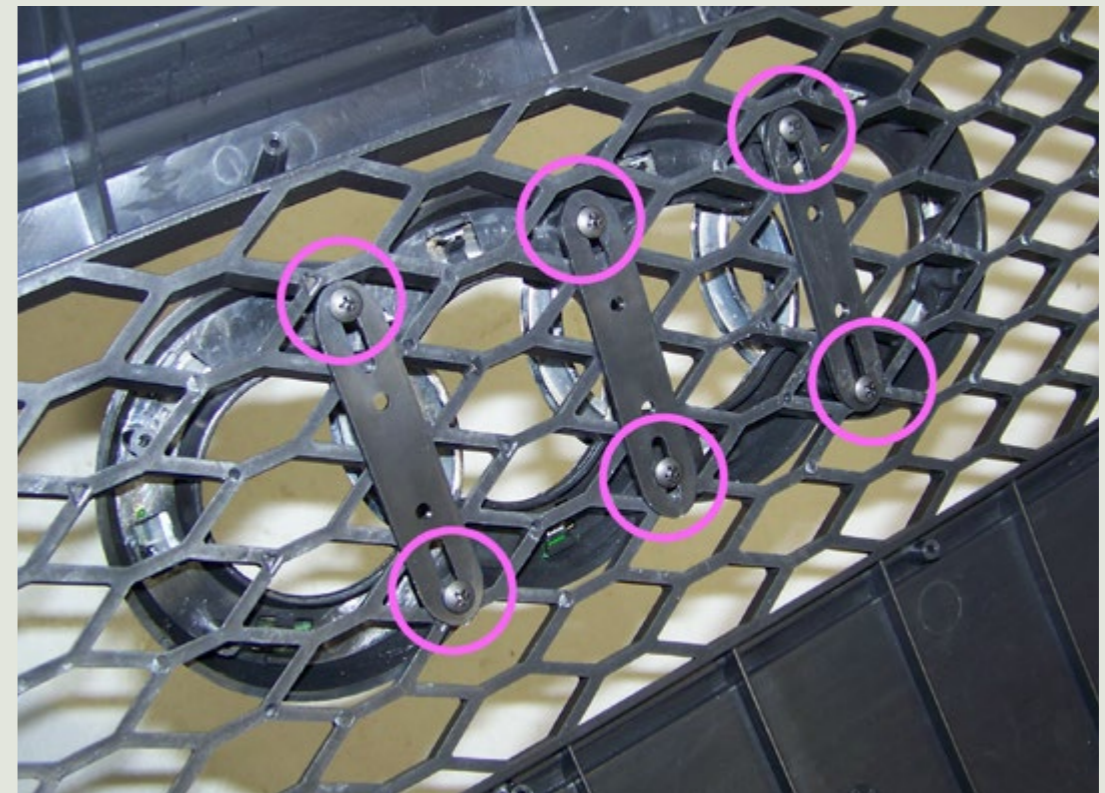
Align the tabs and notches (arrows). Push the rings into the black mounting bracket until the tabs snap in place.



Step 18

Working from the back of the grille, use the straps and screws in the kit to attach the ring holder, as shown here.

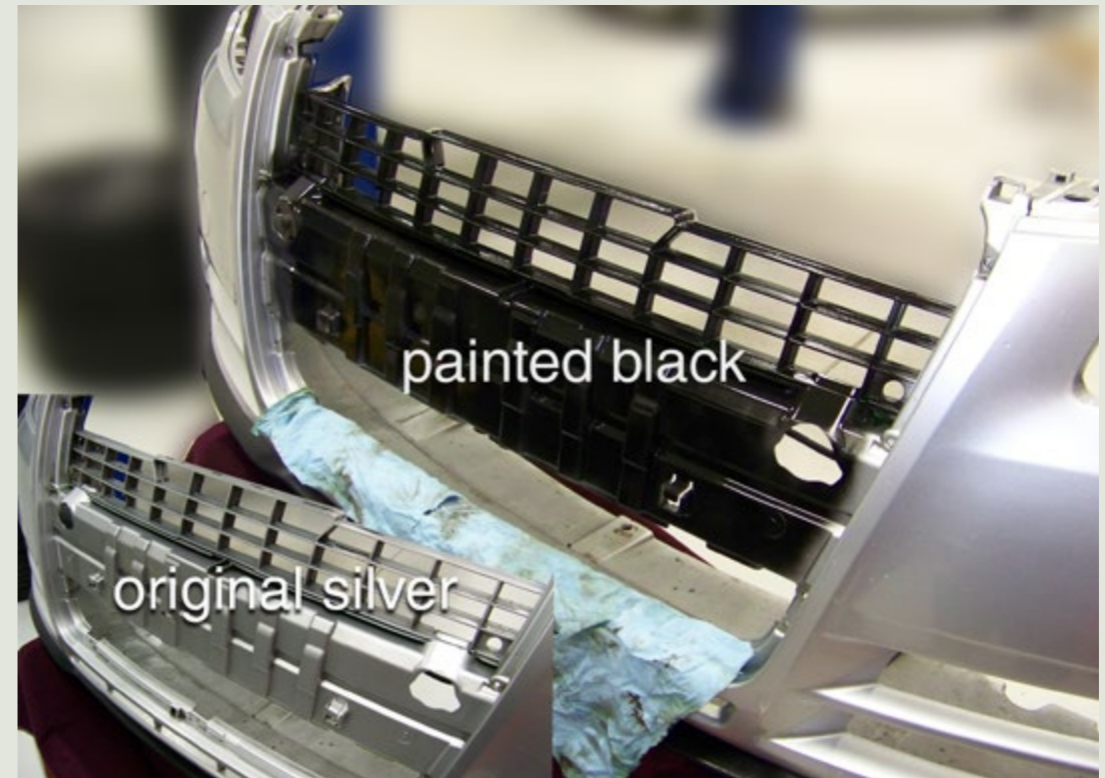
Snug the screws until the holder is tight on the grille, but don't overtighten them.



Step 19

Service Tip: The original bumper cover support grid is painted silver, and will show through the new grille, detracting from the blackout look.

To keep the look of our new grille clean, we scrub away dirt and oil film and spray that section of the bumper support grid with a matte black, plasticized coating.



Step 20

When the paint dries, install your new grille into the bumper opening and replace all of the perimeter screws removed back in Step 14.

Tighten, but don't overtighten the screws.



Step 21

The grille kit comes with two pairs of concealment panels: one set with a hole for cars that have parking sensors, and flat-faced block-offs like this one for those that do not.

Snap the panels for your application in place.



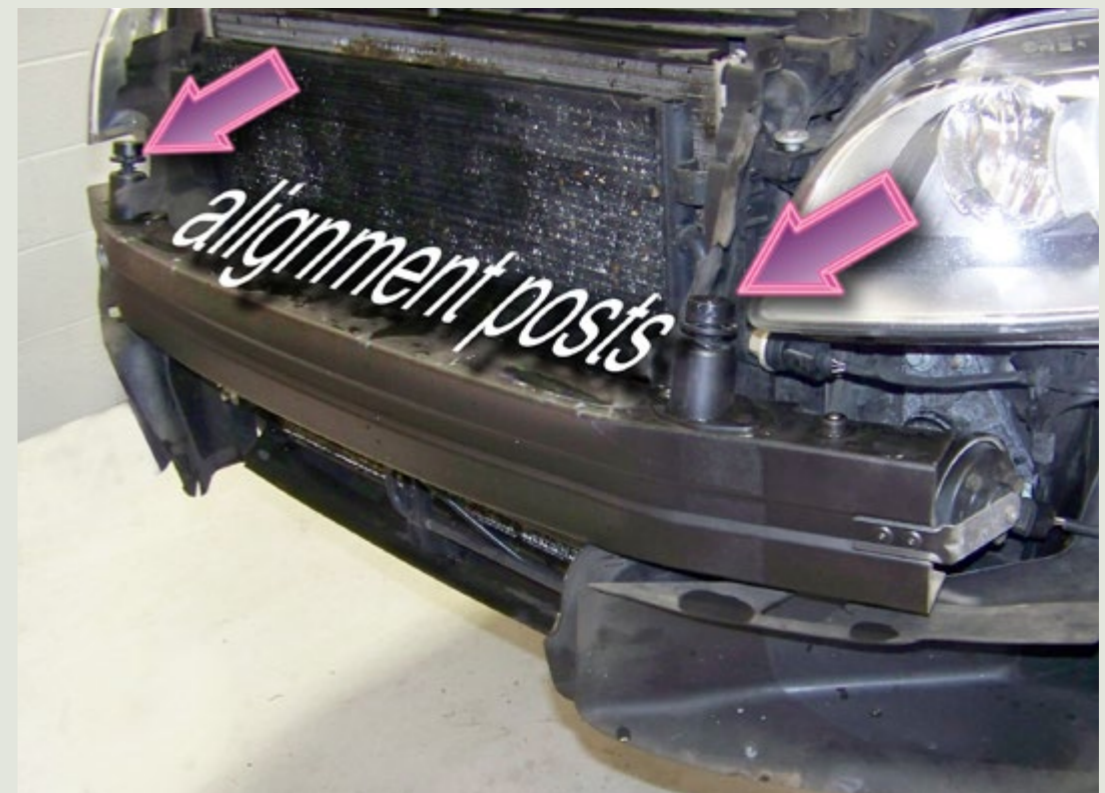
Step 22

Reinstall the front bumper. Have a friend grab one side and help you slide it back onto the car. (It isn't heavy, but two sets of eyes guiding it in place makes it easier to get things aligned.)

Note the two vertical alignment posts (arrows). Locate the two matching u-shaped notches at the rear of the bumper cover and make sure they slide onto these posts in the correct position.

Service Tip: The vertical posts have built-in screw jacks. They allow you to fine tune bumper height, if needed.

Service Tip: This is a great time to clean away dead insects and debris from the condenser to improve engine cooling and air conditioner performance.



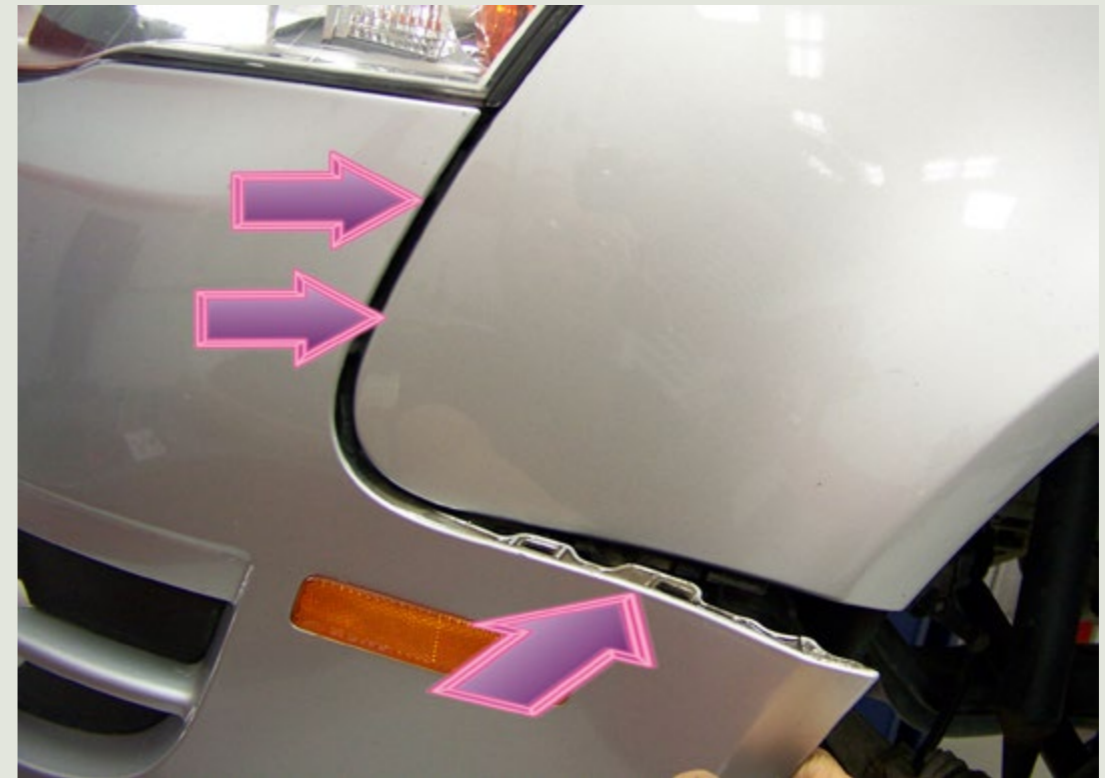
Step 23

Start sliding the bumper onto the car.

Important: Reconnect the electrical connectors unplugged earlier (see Step 12).

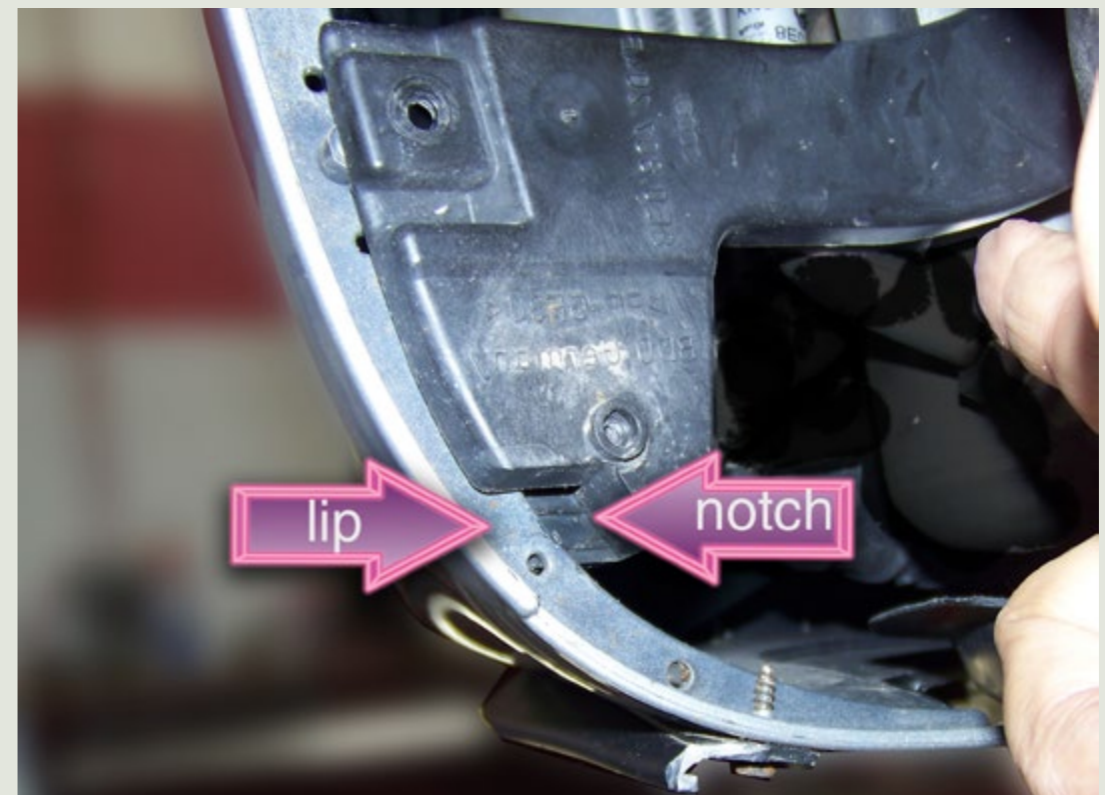
When the bumper is pushed in against the fender (top arrows), push the top lip of the bumper into the gap between the bottom of the fender and the top bumper bracket (bottom arrow).

Service Tip: See next step!



Step 24

As you push the upper bumper lip inward from the side, make sure the lip of the bumper cover slides into the notch in the lower bracket. If it doesn't, the bumper will not fit correctly.



Step 25

Reach in with a 10mm socket and long extension; tighten the nuts on the fender studs. This photo shows the screw locations and wrench superimposed for reference.

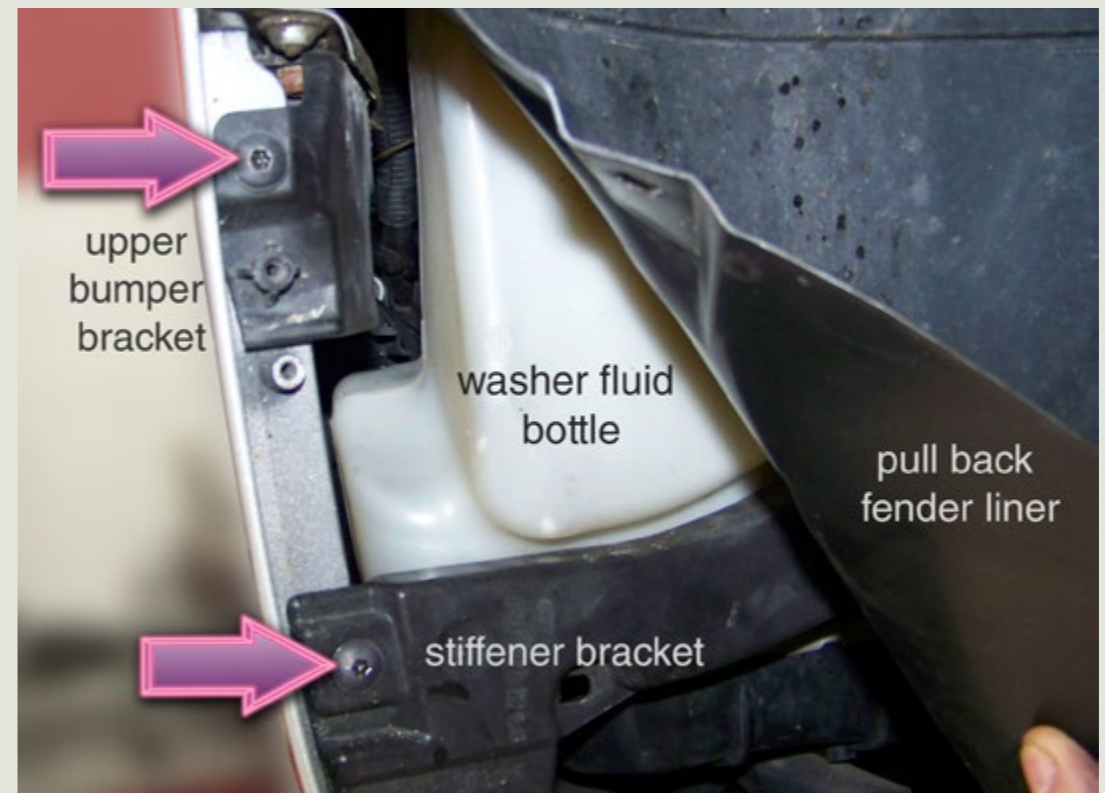
Service Tip: Access to the studs is more limited on the left side due to the placement of the washer bottle. An extra long extension with a wobble head makes starting and tightening the nuts easier.

Service Tip: Hold the bumper cover even with the mating edge of the fender as you final-tighten the nuts for a flush fit.



Step 26

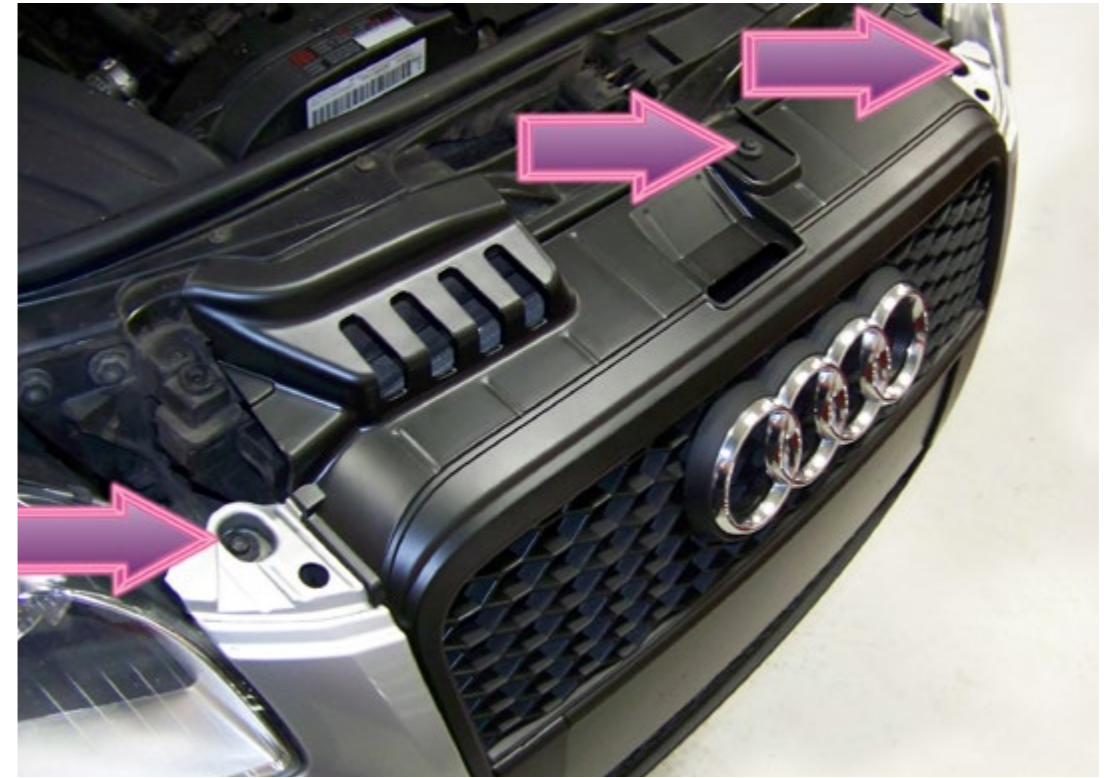
- Replace the screws that secure the bumper cover to the fender brackets (arrows).
- Reinstall all fasteners removed from the fender liner earlier.



Step 27

Reinstall and tighten the top grille screws. The top of the bumper can be slid in and out slightly before the screws are tightened to ensure a good fit between the bumper, headlights, and hood front edge.

This completes the installation of your new RS4 mesh-style grille.



Thanks !

Thank you for purchasing an ECS Tuning
B7 RS4 Mesh Style Grille

ES2992748

ES2992749

We appreciate your business, and
hope this tutorial has been helpful.

