



Skill Level 1 - Easy

# BMW F10 M5/F12 M6 Skid Plate Installation Instructions



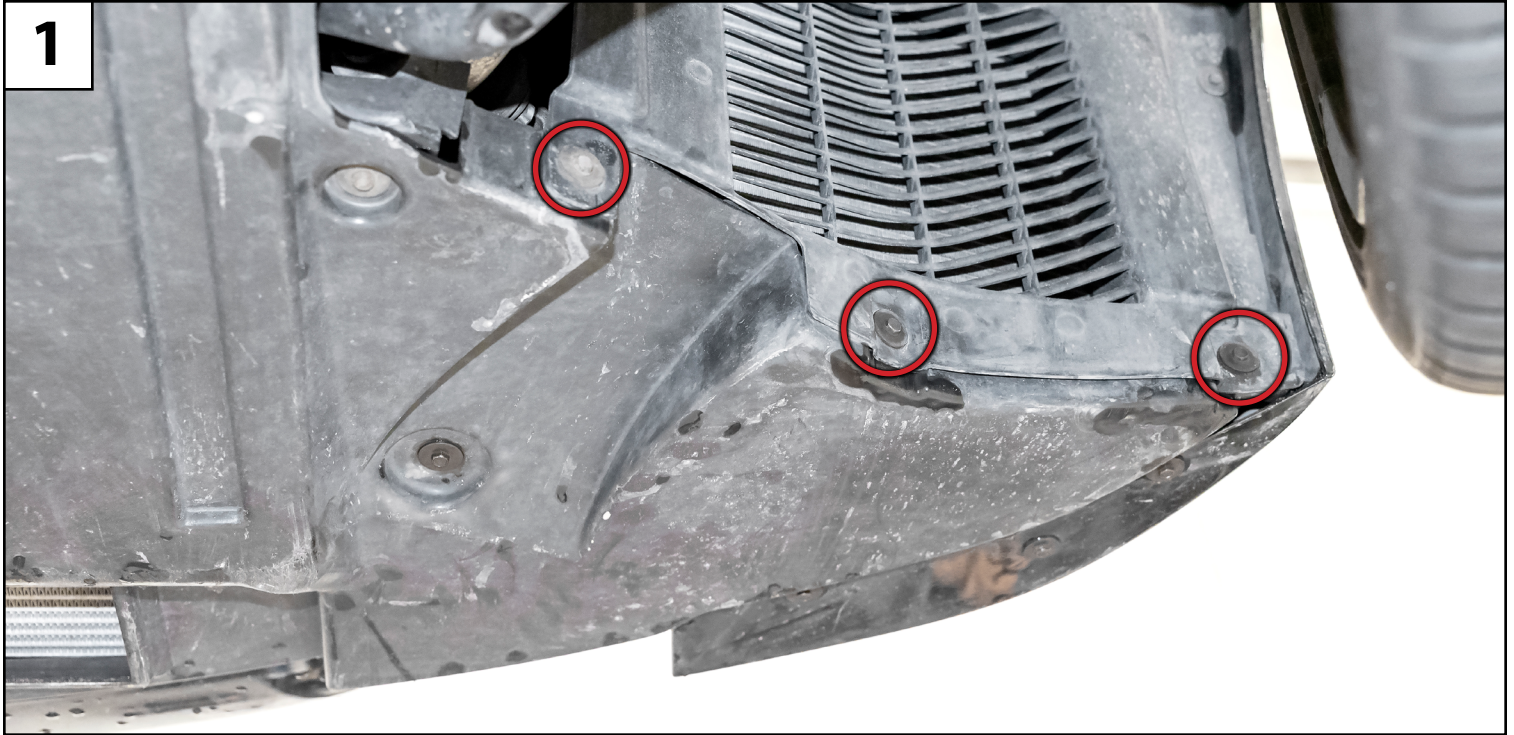
**Thank you for purchasing your new Turner Motorsport  
Skid Plate, we appreciate your business!**



Proper service and repair procedures are vital to the safe, reliable operation of all motor vehicles as well as the personal safety of those performing the repairs. Standard safety procedures and precautions (including use of safety goggles and proper tools and equipment) should be followed at all times to eliminate the possibility of personal injury or improper service which could damage the vehicle or compromise its safety.

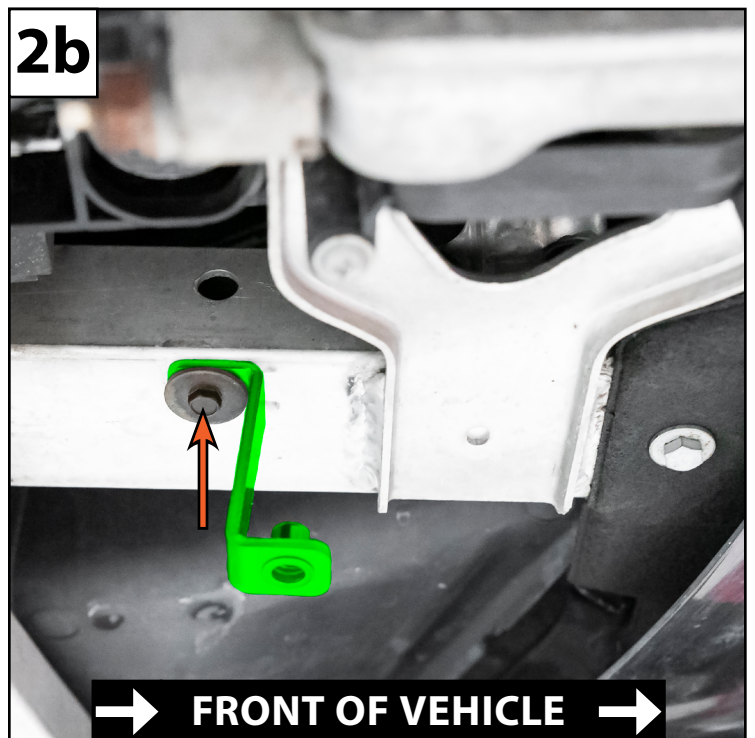
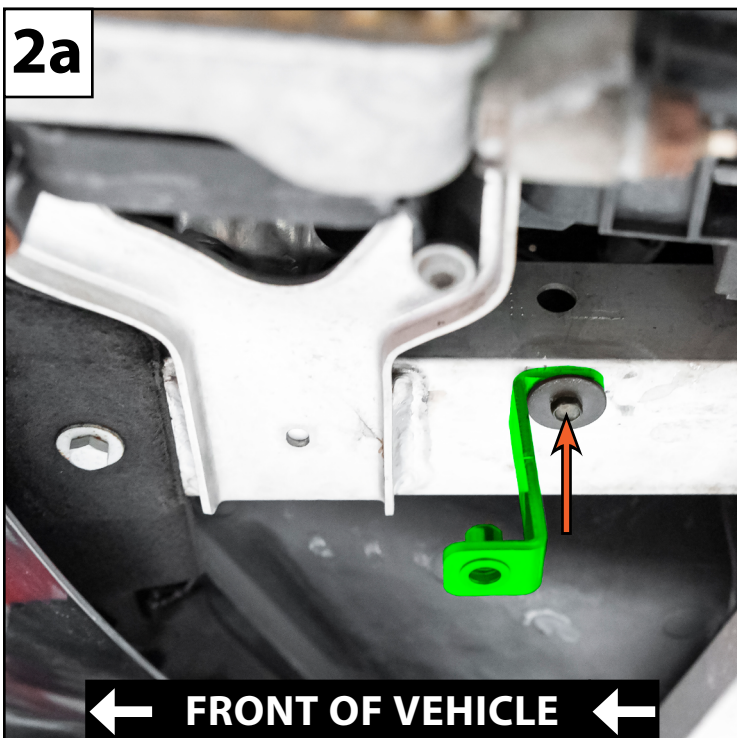
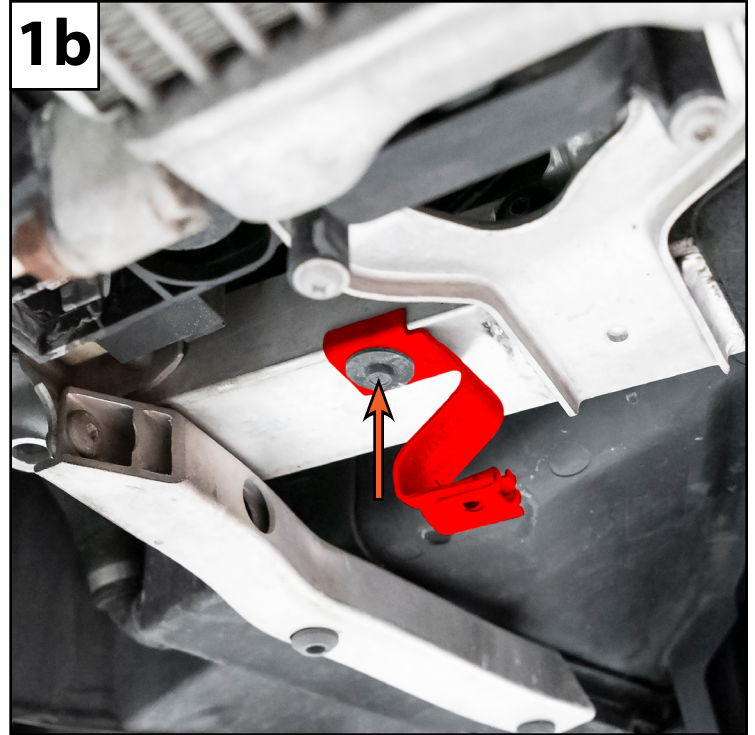
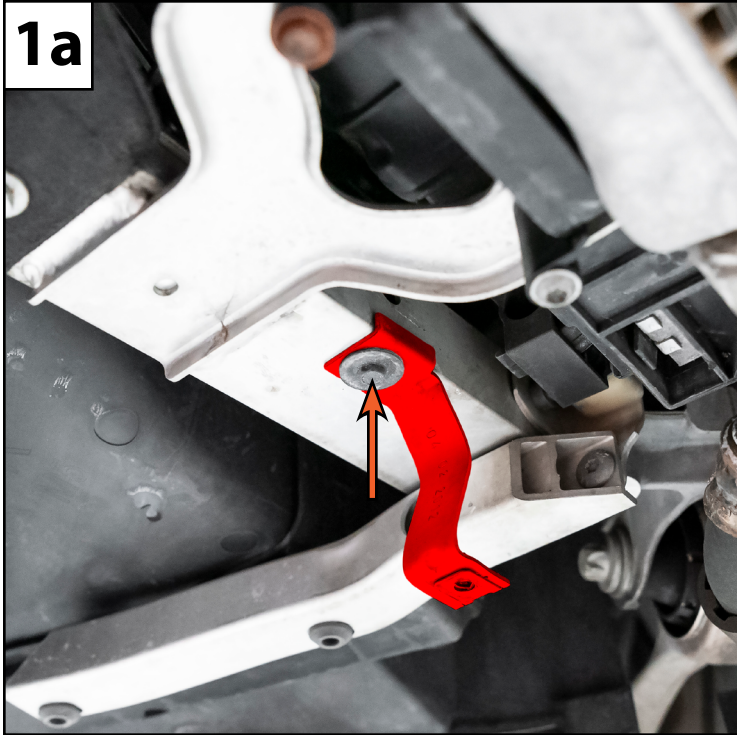
## Section 1: Removing the Stock Belly Pan

- Step #1** • Remove the three screws (circled in **RED**) which secures the fender liner to the belly pan on either side.
- Step #2** • Remove the remaining screws (circled in **RED**) and remove the stock belly pan from the underside of the vehicle.



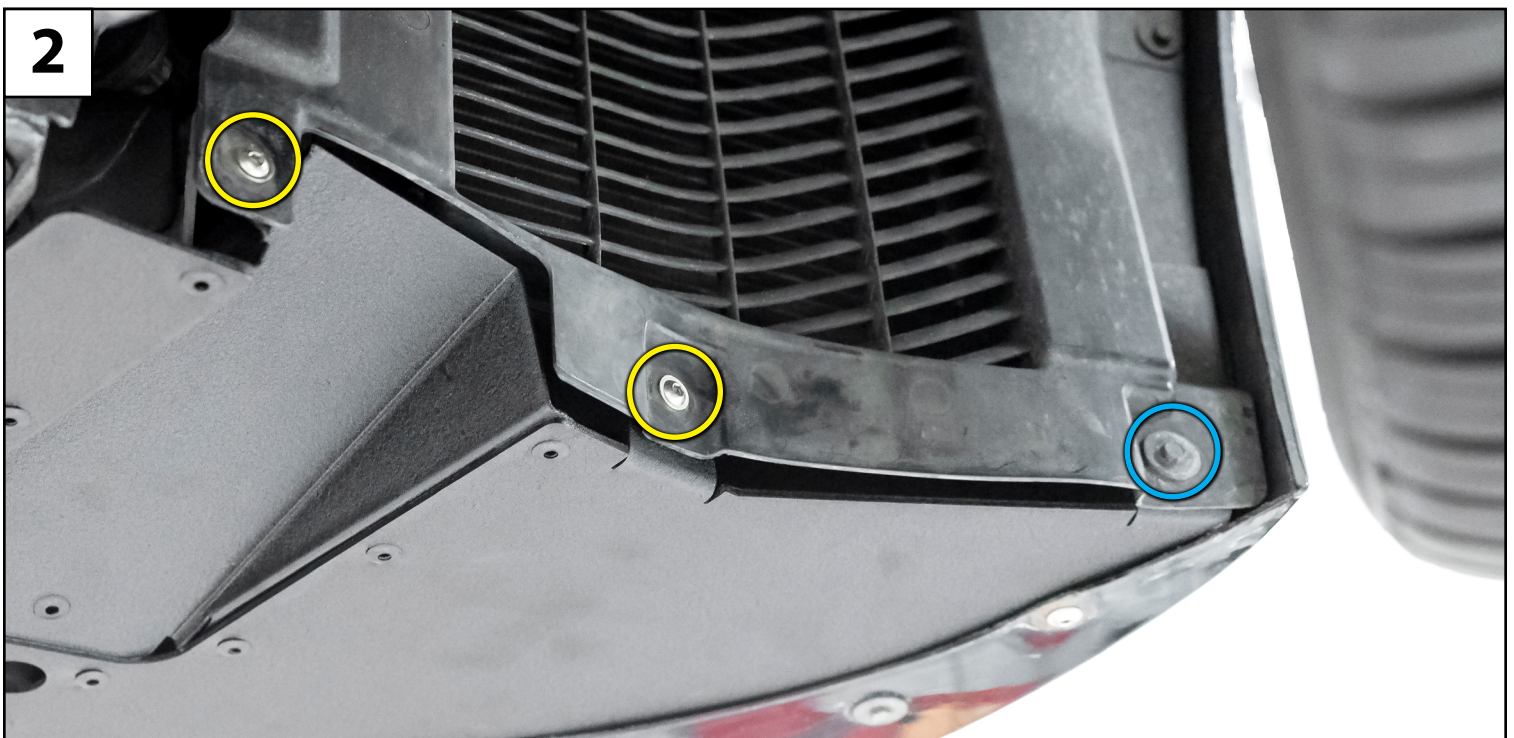
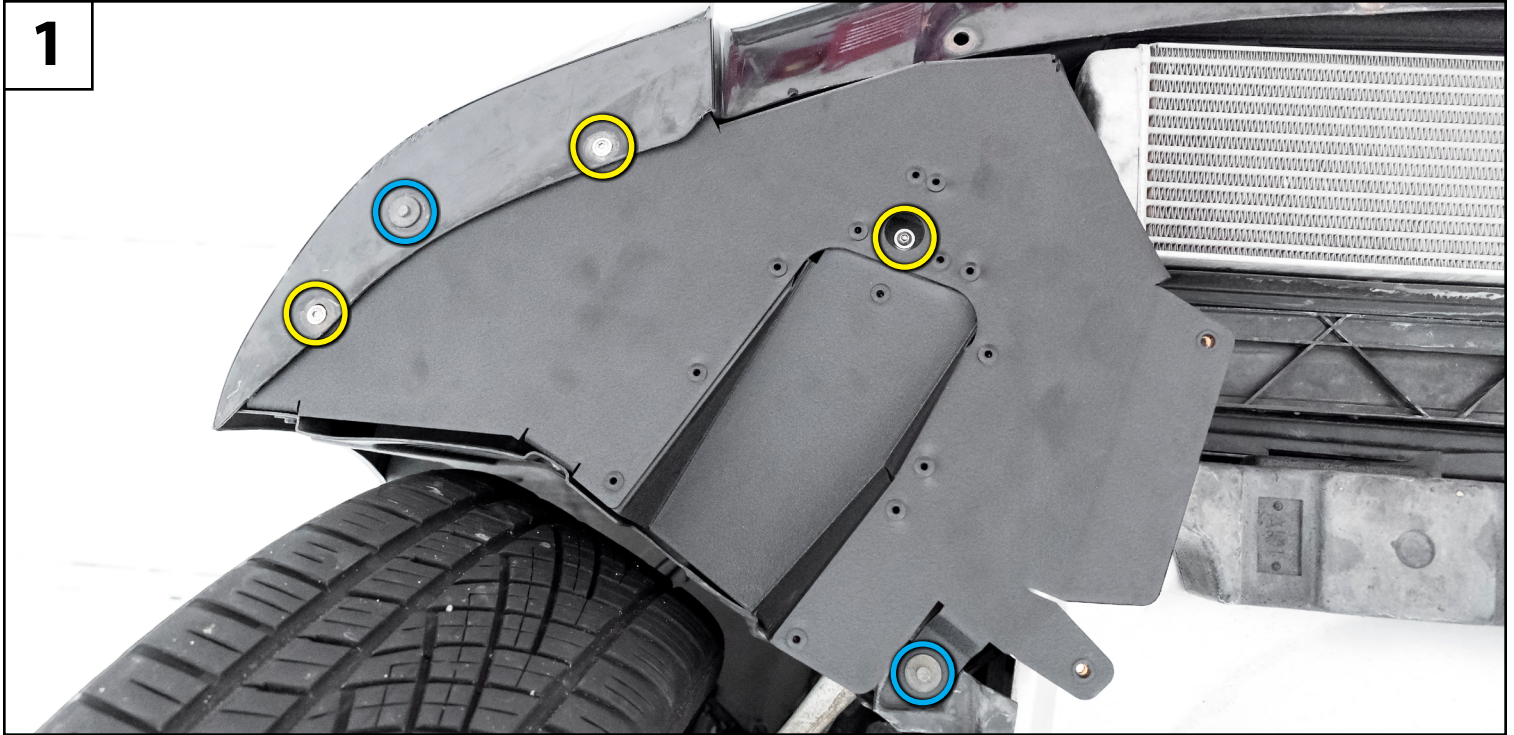
## Section 2: Replacing the Support Brackets

- Step #1** • Remove the screw (arrow) which secures each OE support bracket (highlighted in **RED**) to the underside of each frame rail.
- Step #2** • Install each provided support bracket (highlighted in **GREEN**) so that the riv-nut faces towards the front of the vehicle as shown. Secure each bracket using the OE screw (arrow).



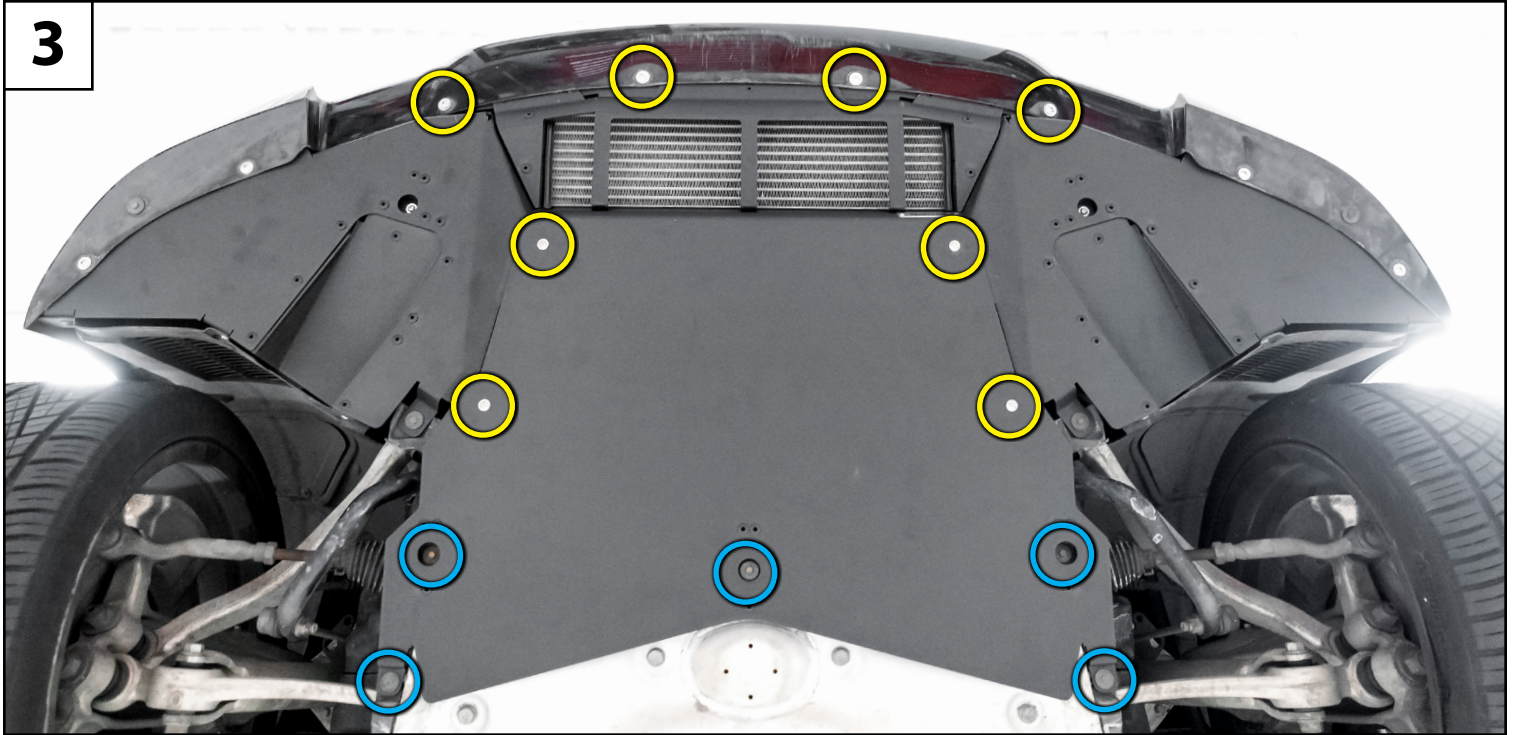
## Section 3: Installing the New Skid Plate

- Step #1**
- Lift each of the new side plates up into place, install three of the provided M6 screws (circled in **YELLOW**), then reinstall two of the OE screws (circled in **BLUE**) as shown.
  - Use the provided washers on the two M6 screws which secure the bumper to each side plate.
- Step #2**
- Install two of the provided M6 screws (circled in **YELLOW**) to secure the fender liner to the side plate, then reinstall one of the OE screws (circled in **BLUE**) as shown.



## Section 3: Installing the New Skid Plate

- Step #3**
- Lift the new skid plate into place, then install the remaining M6 screws (circled in **YELLOW**) to secure it up into place, then reinstall five of the OE screws (circled in **BLUE**) as shown.
  - Use the remaining washers on the four M6 screws which secure the bumper to the skid plate.



***Congratulations, your installation is complete!***