



BMW F10 5 Series Non-M Skid Plate Kit Installation Instructions

Introducing the new Turner F10 5 Series Non-M Skid Plate! The Turner engineering team set out to design a no-compromise belly pan replacement which requires no major modification to the vehicle, and offers some serious protection for the bottom of your F10 5 Series! The finished product was this; the *ultimate* upgrade for your belly pan replacement woes.

Our heavy duty aluminum skid plate features a support bracket for extra strength and rigidity, and we provide all of the hardware you'll need for a quick and easy installation. **The main skid plate can be made to fit M Sport and Non-M Sport bumpers thanks to interchangeable front plates** (details on [Page 4](#)).

Installation time: 1 hour



These installation instructions have been broken up into several sections:

1) Removing the Stock Center Insulation Panel

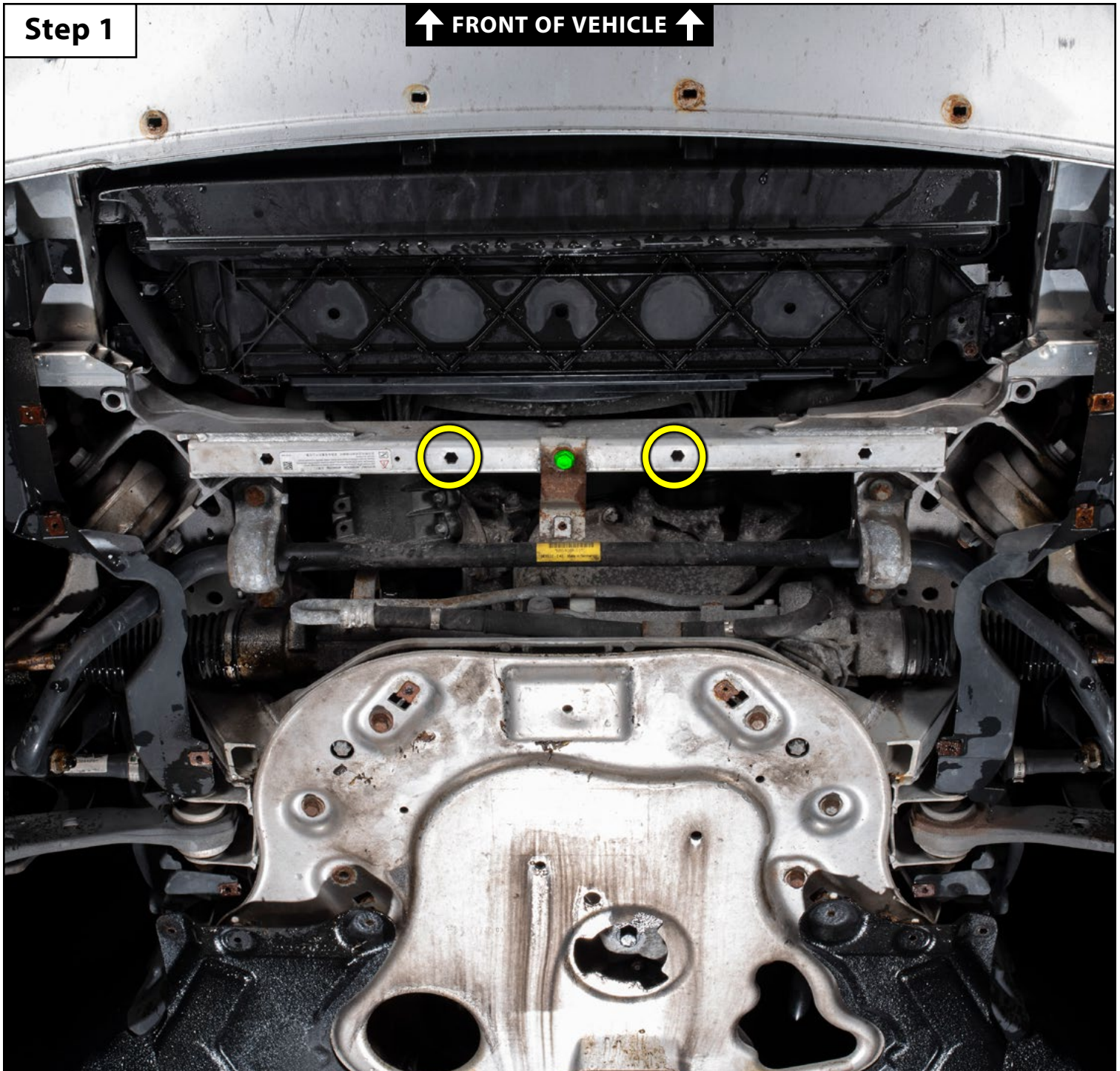
[\(Page 2\)](#)

2) Installing the New Skid Plate Kit

[\(Page 3\)](#)

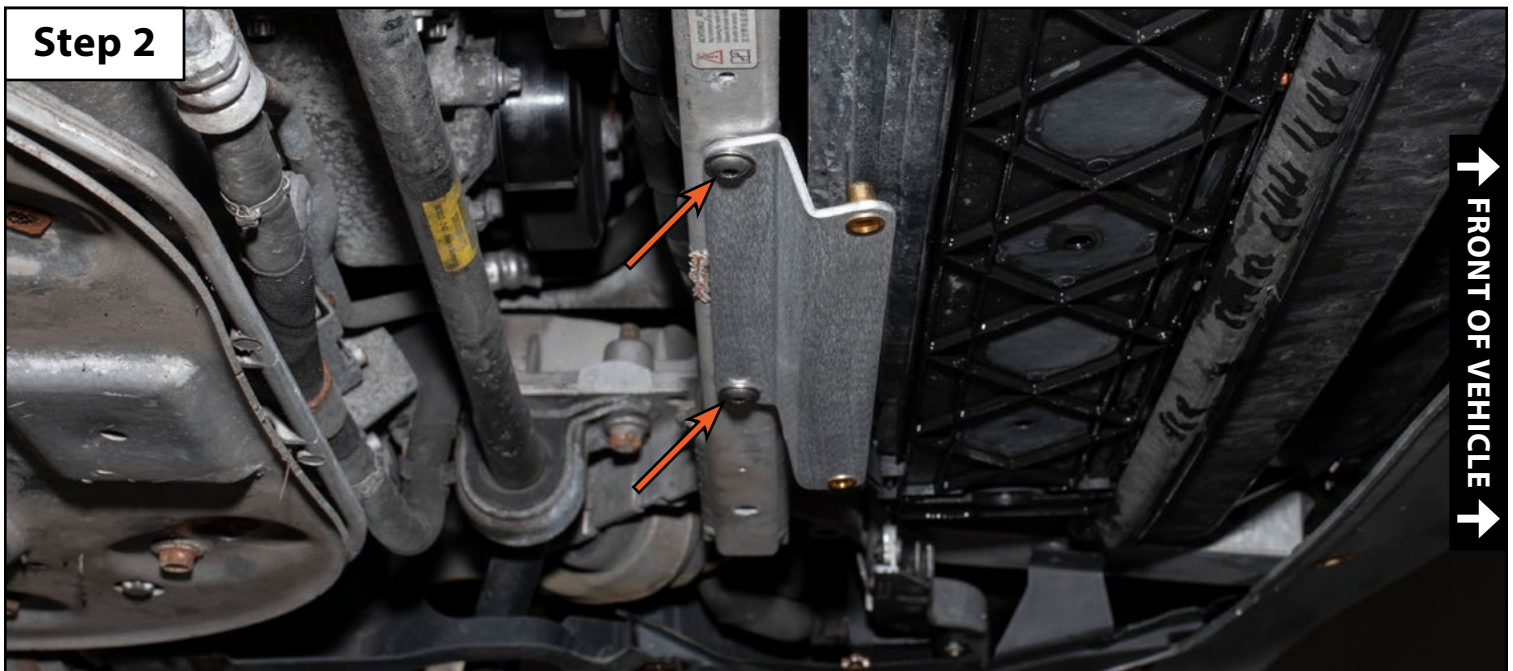
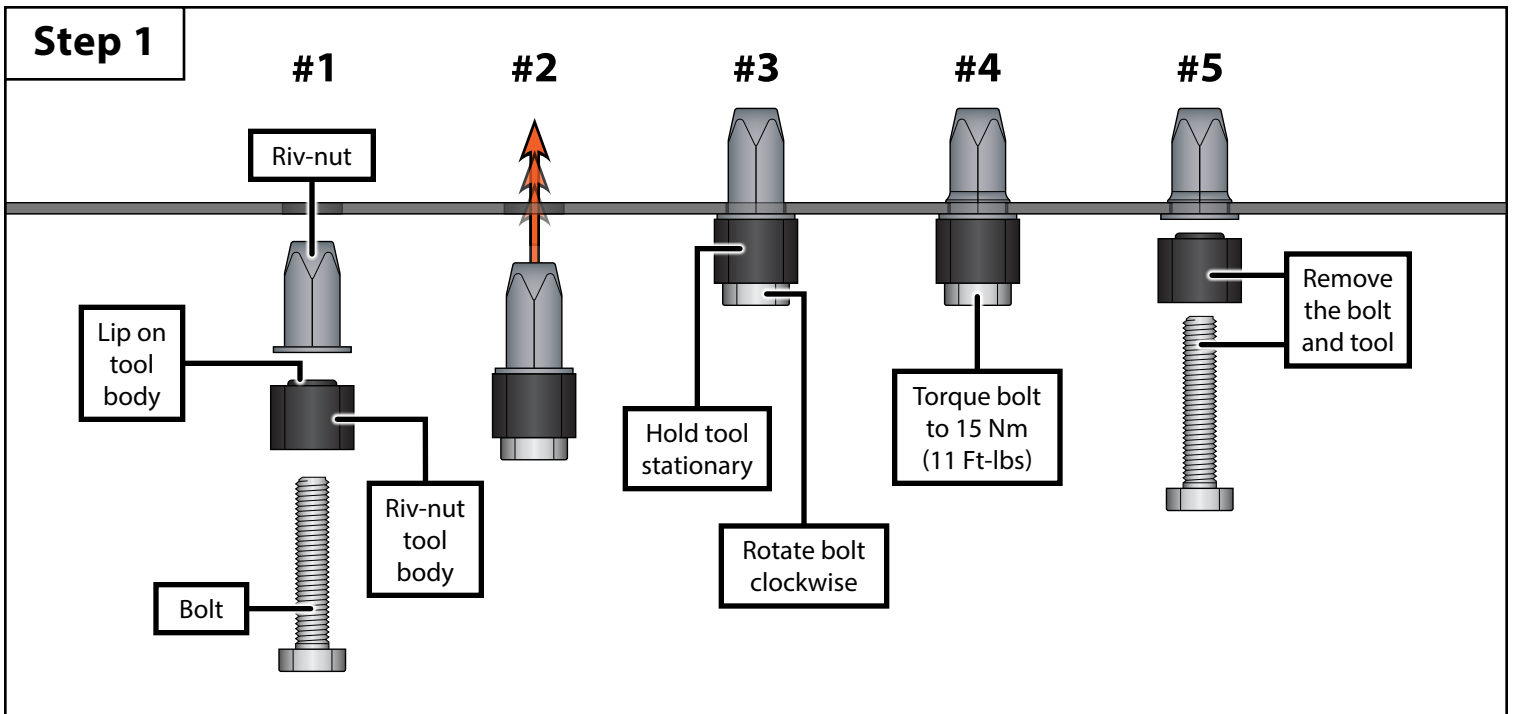
Section 1: Removing the Stock Center Insulation Panel

- Step 1**
- Safely lift and support the vehicle, remove the center insulation panel (not shown).
 - Remove the factory support bracket from the subframe (highlighted in **GREEN** in the **Step 1 photo**).
 - Locate the two hex holes in the subframe (circled in **YELLOW** in the **Step 1 photo**).
 - This is where we will be installing the rivnuts which will secure the new skid plate support bracket.
 - Proceed to step 2 on the next page for detailed riv-nut installation instructions.


[Table of Contents](#)



Section 2: Installing the New Skid Plate Kit

- Step 1**
- Align the lip on the riv-nut tool body with the flanged side of the riv-nut (#1).
 - Thread the bolt through the tool body and into the riv-nut by hand until it is fully seated. Insert the riv-nut into the mounting hole, making sure that it is fully seated (#2).
 - While holding the tool body stationary with a wrench, rotate the bolt clockwise to expand the riv-nut (#3).
 - Torque the bolt to 15 Nm (11 Ft-lbs) (#4).
 - Remove the bolt and tool from the riv-nut and repeat this procedure to install the other riv-nut (#5).
- Step 2**
- Install the skid plate support bracket with the two supplied M8 bolts (arrows in the **Step 2 photo** below).



Section 2: Installing the New Skid Plate Kit

Step 3

- Lift the skid plates into position.
- Loosely install the nine supplied M6 bolts into place. 
- Loosely install the fourteen original belly pan screws through the remaining holes in the skid plate. 
- Adjust the skid plates as needed for proper fitment, then hand tighten all of the fasteners until snug.
 - The **Step 3a photo** below shows the M Sport front skid plate.
 - The **Step 3b photo** below shows the Non-M Sport front skid plate installed. As you can see the front plate looks slightly different, but it installs exactly the same as the one we show in the **Step 3a photo**.

