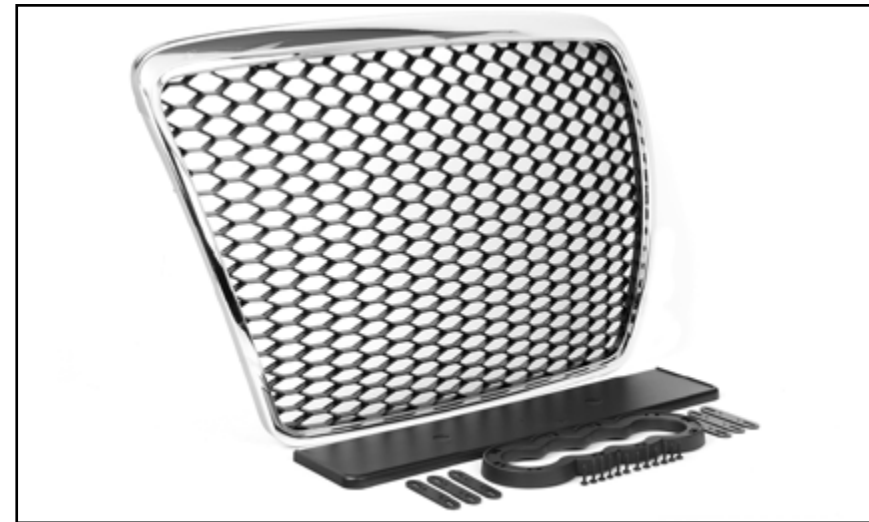




Audi C6 A6 (pre-facelift)
ECS Tuning RS-Style Grille
Installation Instructions



Proper service and repair procedures are vital to the safe, reliable operation of all motor vehicles as well as the personal safety of those performing the repairs. Standard safety procedures and precautions (including use of safety goggles and proper tools and equipment) should be followed at all times to eliminate the possibility of personal injury or improper service which could damage the vehicle or compromise its safety.

INTRODUCTION

The Project:

Today we'll be installing our ECS Tuning RS-Style Grille into our pre-facelift Audi C6 A6. This mesh grille will add a sleek new look to the front end of your vehicle without breaking the bank.

This install is rated as a "1: Easy" on our ECS Difficulty Gauge, which means that only basic skills and experience are required for this job. If you have any doubts at all, rest assured that we're going to lay it out for you step by step, so even if you don't have much "wrench" time under your belt, these instructions will make this install a breeze! A basic set of tools is required, but don't forget to check out the tool list on [Page 5](#), and make sure you have everything you need on hand before you begin. If you have any previous experience with a similar repair or install, you could probably knock this out in an hour or two, but if you have less experience, you should plan an entire afternoon or evening for the project just in case.

A couple of final points - you have to lift the car off of the wheels for this install, the belly pan has to be removed and removing the front wheels will make removing the bumper cover significantly easier for you. Reading these instructions completely before you begin will help you plan out the job and manage your time better. Thanks for looking to ECS Tuning for all of your performance and repair needs, we appreciate your business!

ECS Difficulty Gauge:



1: Easy

Basic Skills Required

TABLE OF CONTENTS

Kit Contents.....	pg.4
Required Tools and Equipment.....	pg.5
Shop Supplies and Materials.....	pg.6
Installation and Safety Information.....	pg.7
Removing the Original Grille Assembly.....	pg.8
Installing the New RS-Style Grille Assembly.....	pg.21
Schwaben Tools.....	pg.25

KIT CONTENTS



Grille (Available w/Black or Chrome Frame)



Euro Plate Holder



Plate Holder Screws



Audi Ring Holder



Euro Plate Holder & Audi Ring Holder Brackets



Audi Ring Holder Screws

REQUIRED TOOLS

Note: The tools required for each step will be listed by the step number throughout these instructions.

Standard Automotive Tools

Required For This Install

Available On Our Website

- **Protecta-Sockets (for lug nuts)** [ES#2221243](#)
- **3/8" Drive Ratchet** [ES#2765902](#)
- **3/8" Drive Torque Wrench** [ES#2221245](#)
- **3/8" Drive Deep and Shallow Sockets** [ES#2763772](#)
- **3/8" Drive Extensions** [ES#2804822](#)
- **Hydraulic Floor Jack** [ES#240941](#)
- **Torx Drivers and Sockets** [ES#11417/8](#)
- **1/2" Drive Deep and Shallow Sockets** [ES#2839106](#)
- **1/2" Drive Ratchet**
- **1/2" Drive Extensions**
- **1/2" Drive Torque Wrench** [ES#2221244](#)
- **1/2" Drive Breaker Bar** [ES#2776653](#)
- **Hook and Pick Tool Set** [ES#2778980](#)

- **1/4" Drive Ratchet** [ES#2823235](#)
- **1/4" Drive Deep and Shallow Sockets** [ES#2823235](#)
- **1/4" Drive Extensions** [ES#2823235](#)
- **Plier and Cutter Set** [ES#2804496](#)
- **Flat and Phillips Screwdrivers** [ES#2225921](#)
- **Jack Stands** [ES#2763355](#)
- **VAG Connector Tool** [ES#2628676](#)
- **Pry Bar Set** [ES#1899378](#)
- **Punch and Chisel Set**
- **Hex Bit (Allen) Wrenches and Sockets** [ES#11420](#)
- **Thread Repair Tools** [ES#1306824](#)
- **Trim Removal Tool Set** [ES#517779](#)
- **Open/Boxed End Wrench Set** [ES#2765907](#)

SHOP SUPPLIES AND MATERIALS

Standard Shop Supply Recommendations: We recommend that you have a standard inventory of automotive shop supplies before beginning this or any automotive repair procedure. The following list outlines the basic shop supplies that we like to keep on hand. Shop supplies with a hyperlink are available on our website.

- Hand Cleaner/Degreaser - [Click Here](#)
- Pig Mats - for protecting your garage floor and work area from spills and stains - [Click Here](#)
- Spray detailer - for rapid cleaning of anything that comes into contact with your paint such as brake fluid - [Click Here](#)
- Micro Fiber Towels - for cleaning the paint on your car - [Click Here](#)
- Latex Gloves - for the extra oily and dirty jobs - [Click Here](#)
- Medium and High Strength Loctite Thread lock compound - to prevent bolts from backing out - [Click Here](#)
- Anti-Seize Compound - to prevent seizing, galling, and corrosion of fasteners - [Click Here](#)
- Aerosol Brake/Parts Cleaner - for cleaning and degreasing parts
- Shop Rags - used for wiping hands, tools, and parts
- Penetrating oil - for helping to free rusted or stuck bolts and nuts
- Mechanics wire - for securing components out of the way
- Silicone spray lube - for rubber components such as exhaust hangers
- Paint Marker - for marking installation positions or bolts during a torquing sequence
- Plastic Wire Ties/Zip Ties - for routing and securing wiring harnesses or vacuum hoses
- Electrical tape - for wrapping wiring harnesses or temporary securing of small components

INSTALLATION NOTES

- **RH** refers to the *passenger side* of the vehicle.
- **LH** refers to the *driver side* of the vehicle.
- Always use the proper torque specifications.
- If applicable to this installation, torque specifications will be listed throughout the document and at the end as well.
- Please read all of these instructions and familiarize yourself with the complete process **BEFORE** you begin.

GENERAL PREPARATION AND SAFETY INFORMATION

ECS Tuning cares about your health and safety. Please read the following safety information. This information pertains to automotive service in general, and while it may not pertain to every job you do, please remember and share these important safety tips.

- Park your car in a safe, well lit, level area.
- Shut the engine off and remove the key from the ignition switch.
- Make sure any remote start devices are properly disabled.
- **ALWAYS** wear safety glasses.
- Make sure the parking brake is applied until the vehicle is safely lifted and supported.
- If using an automotive lift, be sure and utilize the factory specified lift points. Lifting a vehicle in an incorrect location can cause damage to the suspension/running gear.
- When lifting a vehicle using a jack, always utilize the factory specified lift points. Lifting a vehicle in an incorrect location can cause damage to the suspension/running gear. **ALWAYS** support the vehicle with jack stands.
- Always read and follow all safety information and warnings for the equipment you are using.

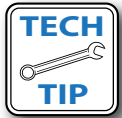


NEVER get underneath a vehicle that is supported only by a jack, and ALWAYS make sure that the vehicle is securely supported on jack stands.

REMOVING THE ORIGINAL GRILLE ASSEMBLY

Step 1: Trim Removal Tool

Begin by gently prying upwards on the black plastic cover as shown in the photo, you'll need to release the clips which are located on the left and right sides, as well as in the middle of the panel.



A flat blade screwdriver will also work here, but use caution to prevent damage to the bumper cover.



Step 2:

To remove the cover, pull it out towards your body as shown in the photo and slide it out from underneath the engine compartment seal.



REMOVING THE ORIGINAL GRILLE ASSEMBLY

Step 3: T30 Torx

Remove the three bolts which secure the top of the bumper cover to the vehicle.



Step 4: T30 Torx

Remember that the two side bolts are longer than the center bolt, they need to be reinstalled in the correct locations during reassembly.



REMOVING THE ORIGINAL GRILLE ASSEMBLY

Step 5: Protecta-Socket and Impact Wrench (or 1/2" Breaker Bar)

Safely lift and support the vehicle. Removing the front wheels from the vehicle at this point will greatly facilitate the rest of the install, allowing significantly better access to the fender liner and the bumper cover guide and retaining bolts.



Step 6: Flat Blade Screwdriver

Moving to the underside of the vehicle, the front belly pan must be removed. There are six "quarter-turn" screws which secure the belly pan to the vehicle, begin by removing the center screw.



REMOVING THE ORIGINAL GRILLE ASSEMBLY

Step 7: Flat Blade Screwdriver

Next, remove the screw located on the passenger side of the belly pan.



Step 8: Flat Blade Screwdriver

Next, remove the screw located on the driver side of the belly pan.



REMOVING THE ORIGINAL GRILLE ASSEMBLY

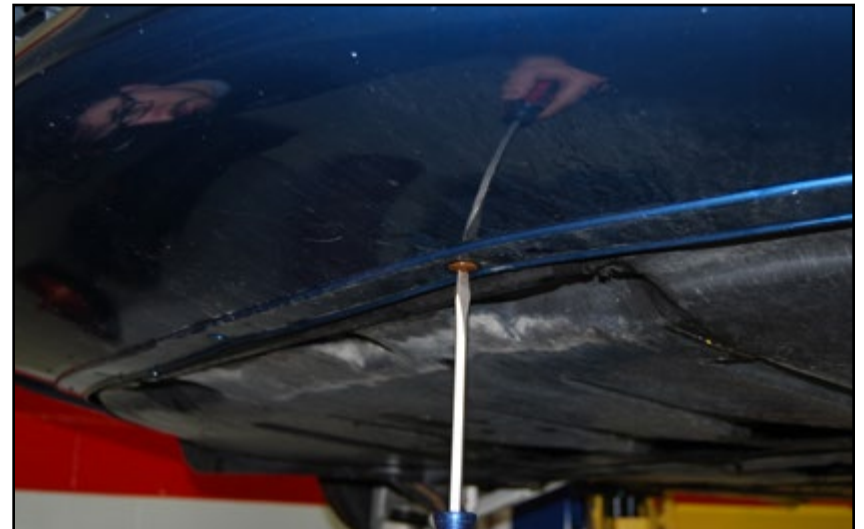
Step 9: Flat Blade Screwdriver

Now, remove the three front screws from the belly pan.



Step 10: Flat Blade Screwdriver

Once all of the screws have been removed from the belly pan it can be removed from the vehicle and set aside.



REMOVING THE ORIGINAL GRILLE ASSEMBLY

Step 11: Trim Removal Tool

Remove the two outside retainer clips from the lower wheel well trim.



Step 12: Trim Removal Tool

Remove the final retainer clip from the lower wheel well trim and remove the trim from the vehicle. Repeat this process on the other wheel well trim.



REMOVING THE ORIGINAL GRILLE ASSEMBLY

To be disconnected during bumper cover removal:



- Turn signal electrical connector
- Right fog light electrical connector
- Left fog light electrical connector
- Headlamp washer connection

REMOVING THE ORIGINAL GRILLE ASSEMBLY

Step 13: VAG Connector Tool

Locate the driver and passenger side fog lights from underneath the vehicle. Disconnect the electrical connector from each fog light and let the wire hang out of the way where it will not bind when removing the bumper cover.



Step 14:

On the driver side of the vehicle you may find headlamp washer fluid lines near the side marker light assembly. If your vehicle is equipped with this option, simply unclip the hose from the "T" connector that is attached to the bumper cover.



Some washer fluid may drain from the lines during this step, if this happens don't forget to top off the washer fluid reservoir after the install is complete.



REMOVING THE ORIGINAL GRILLE ASSEMBLY

Step 15: VAG Connector Tool

Locate the wiring harness for the side marker lights on the driver side of the bumper cover, then disconnect the electrical connector and let the wire hang out of the way where it will not bind when removing the bumper cover.



Step 16: T25 Torx

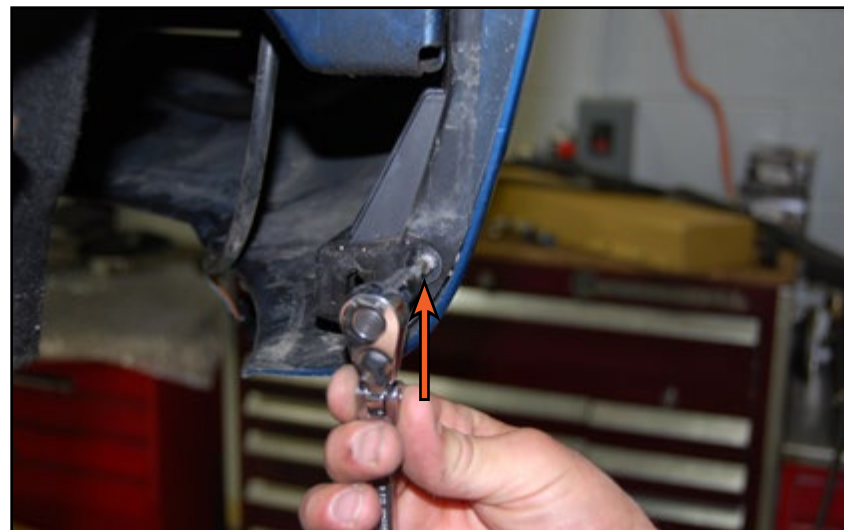
Now we need to partially remove the wheel well liners in order to access the bumper cover guides and the bumper cover retainer plates.



REMOVING THE ORIGINAL GRILLE ASSEMBLY

Step 17: T25 Torx

Gently pull the passenger wheel well liner away from the bumper cover in order to access the bumper cover guide. Remove the lower screw which secures the bumper cover to the bumper cover guide.



Step 18: T25 Torx

Remove the two upper screws which secure the bumper cover to the bumper cover guide, then repeat this process on the driver side of the vehicle.



REMOVING THE ORIGINAL GRILLE ASSEMBLY

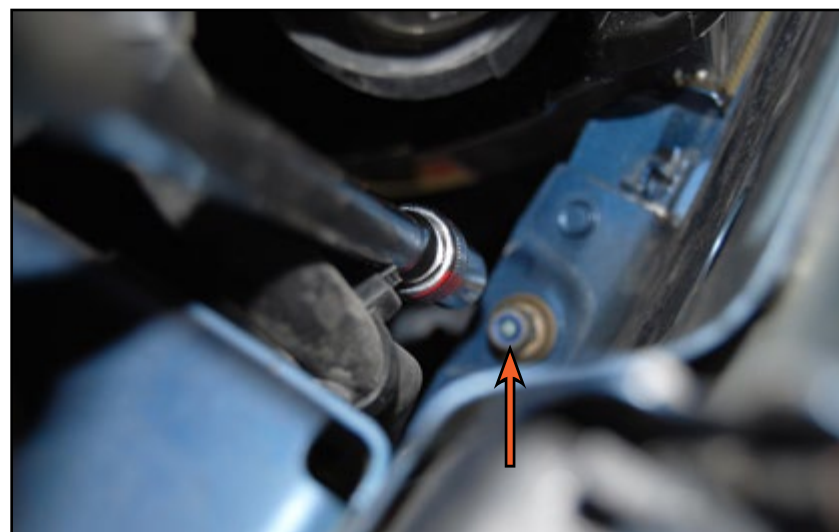
Step 19: 10mm Socket, Long Extension & Ratchet

The bumper cover is now secured to the vehicle by only two 10mm nuts (one on each side) which are located several inches past the edge of the wheel well, so they must be accessed using a ratchet and a long extension as shown in the photo.



Step 20: 10mm Socket, Long Extension & Ratchet

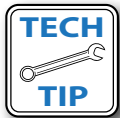
Guide the socket through the opening in the wheel well and onto the nuts, then remove the nuts from each side of the vehicle.



REMOVING THE ORIGINAL GRILLE ASSEMBLY

Step 21:

It is now time to enlist the help of a friend, it is time to remove the bumper cover from the vehicle. To unclip the bumper cover from the bumper cover guide, gently pull the bumper cover outwards away from the vehicle as shown in the photo, starting from the edge of the wheel well and working your way forward.



This would be a good time to lay out a sheet or a blanket on the floor so you have a safe place to put the bumper cover once it is removed.



Step 22:

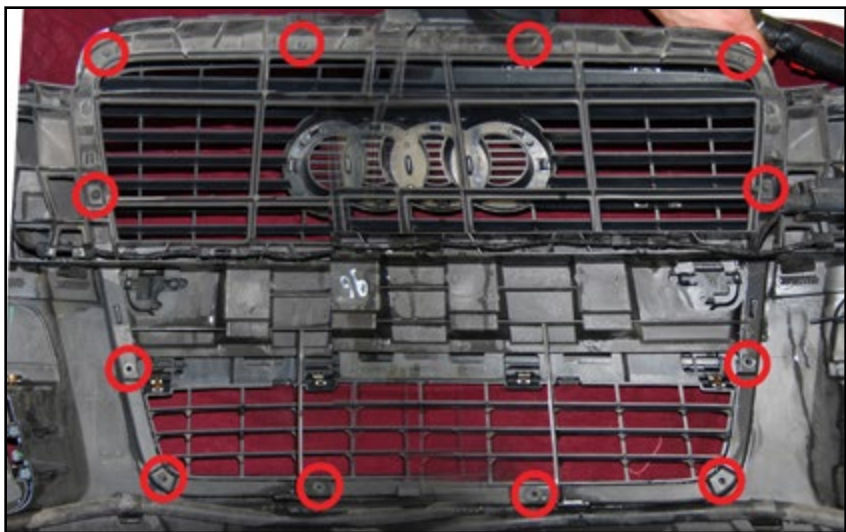
Repeat this process on the other side of the vehicle, then pull the bumper cover towards the front of the vehicle, ensuring that there are no electrical connections or hoses still attached to the bumper cover, then remove the bumper cover from the vehicle and set it aside.



REMOVING THE ORIGINAL GRILLE ASSEMBLY

Step 23: T25 Torx

Once the bumper cover is on a soft work surface, the factory grille must be removed. There are 12 torx screws which secure the grille to the bumper cover (circled in the photo).



Step 24: T25 Torx

Remove the 12 screws which secure the grille to the bumper cover.



INSTALLING THE NEW RS-STYLE GRILLE ASSEMBLY

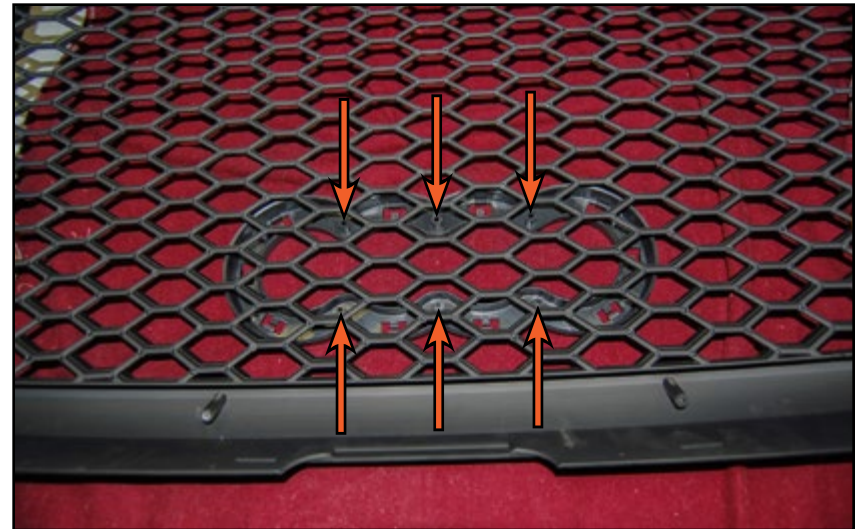
Step 1:

Lay the new RS-style grille upside-down on a soft work surface, it is time to choose which grille accessories you wish to install.

To use the Audi ring holder, place it underneath the grille at the desired location, note the locations of the six screw holes in the back of the ring holder (arrows in the photo).



Once the grille installation process is complete, only by again removing the bumper cover can any changes be made to the grille accessories.



Step 2:

Install the three plastic securing brackets with the provided hardware as shown in the photo.



INSTALLING THE NEW RS-STYLE GRILLE ASSEMBLY

Step 3: Trim Removal Tool - OR - Flat Blade Screwdriver

Your factory Audi rings must be reused for your new grille, carefully unclip the rings from the original ring holder by gently pushing out the retaining clips.



Step 4:

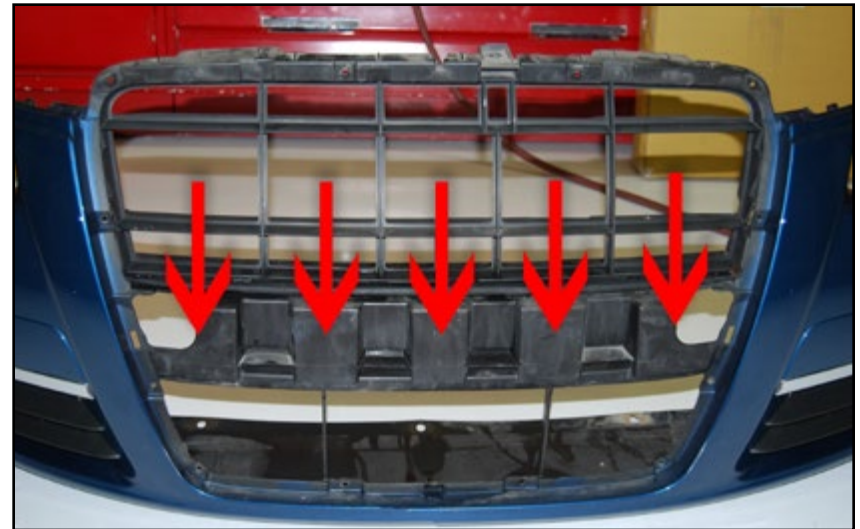
If you are using the provided Euro plate holder, the installation is the same as the Audi ring holder bracket. Use the provided brackets and hardware to secure the plate holder in the desired location.



INSTALLING THE NEW RS-STYLE GRILLE ASSEMBLY

Step 5:

Before installing the new RS-style grille into your bumper cover, some modification may be required for a more precise fit. The portion of the bumper cover located directly behind the Euro plate holder contains five protruding rectangle-shaped supports. These supports may not allow the RS-style grille to completely seat into place, and may cause the center of the grille to bulge slightly once installed.



Step 6:

Mock up the new grille into place in the bumper cover, noting the exact locations where the bumper cover interferes with the RS-style grille. Carefully remove material from these areas with an electric or air grinder in order to allow the grille to sit more flush inside the bumper cover.



Only a **SMALL** amount of material needs to be removed. **DO NOT** grind through the bumper cover, or the steel bumper will become visible from behind the grille.



FINAL INSTALLATION STEPS

Slide the bumper cover onto the vehicle, snap each side of the bumper cover into the bumper cover guide.

Reinstall the top three T30 torx bolts to hold the bumper cover in place.

Reconnect all of the electrical and washer fluid connections inside the bumper cover.

Ensure that all electrical and washer fluid connections are clear of the chassis and the bumper cover, and are not being pinched.

Reinstall and snug the two 10mm nuts which secure the bumper cover to the vehicle.

Reinstall the wheel well liners, the lower wheel well trim pieces, and the front wheels (if applicable).

Reinstall the belly pan using the six “quarter turn” screws.

Slide the black plastic cover under the engine compartment seal and clip it back into place.

SCHWABEN - BUILD THE ULTIMATE TOOL COLLECTION

At ECS Tuning, we carry a line of high quality Schwaben Tools and Equipment to help you build your ultimate tool collection. Never before has affordability and quality been so closely related. Our entire Schwaben line is subjected to strict in house testing for strength and durability. See what we have to offer and equip your garage without breaking the bank.



Your C6 A6 RS-Style Grille installation is complete!



These instructions are provided as a courtesy by ECS Tuning

Proper service and repair procedures are vital to the safe, reliable operation of all motor vehicles as well as the personal safety of those performing the repairs. Standard safety procedures and precautions (including use of safety goggles and proper tools and equipment) should be followed at all times to eliminate the possibility of personal injury or improper service which could damage the vehicle or compromise its safety.

Although this material has been prepared with the intent to provide reliable information, no warranty (express or implied) is made as to its accuracy or completeness. Neither is any liability assumed for loss or damage resulting from reliance on this material. SPECIFICALLY, NO WARRANTY OF MERCHANTABILITY, FITNESS FOR A PARTICULAR PURPOSE OR ANY OTHER WARRANTY IS MADE OR TO BE IMPLIED WITH RESPECT TO THIS MATERIAL. In no event will ECS Tuning, Incorporated or its affiliates be liable for any damages, direct or indirect, consequential or compensatory, arising out of the use of this material.